

# AHVE\* (115V)

*MULTI-POSITION, VARIABLE-SPEED,  
ECM-BASED AIR HANDLER WITH IN-  
TERNAL EEV, COMMUNICATING FOR  
S-SERIES MATCHUPS  
1½ TO 5 TONS*



### Contents

Nomenclature .....	2
Product Specifications .....	3
Dimensions .....	4
Wiring Diagram .....	5
Accessories .....	6

**R32**



### Product Features

- Electronic Expansion Valve (EEV) for cooling and heat pump applications.
- 7mm evaporator coil tube size
- Variable-speed ECM blower motor
- Compatible with Goodman brand smart thermostat
- Provides constant CFM over a wide range of static pressure conditions independent of duct system
- CFM indicator
- Thermostat provides adjustable low-CFM for efficient fan-only operation
- All-aluminum evaporator coil
- Fault recall of six most recent faults
- Improved humidity and comfort control
- Coil mounting track for quick repositioning
- Rigid SmartFrame™ cabinet
- UL 60335 2-40 Compliant
- Factory installed R-32 sensor designed for the lifespan of the coil
- Optimized for use with R-32 refrigerant
- AHRI certified; ETL listed

### Cabinet Features

- Cabinet air leakage less than 2.0% at 1.0 inch H<sub>2</sub>O when tested in accordance with ASHRAE standard 193
- Cabinet air leakage less than 1.4% at 0.5 inch H<sub>2</sub>O when tested in accordance with ASHRAE standard 193
- Horizontal or vertical configuration capabilities
- 21" depth for easier attic access
- DecaBDE-free thermoplastic drain pan with secondary drain connections
- Screw-less sides and back helps to reduce condensation when installed in humid locations
- Foil-faced insulation covers the internal casing to reduce cabinet condensation
- Galvanized, leather grain-embossed finish
- Glue-less cabinet insulation retention
- Tool-less filter access

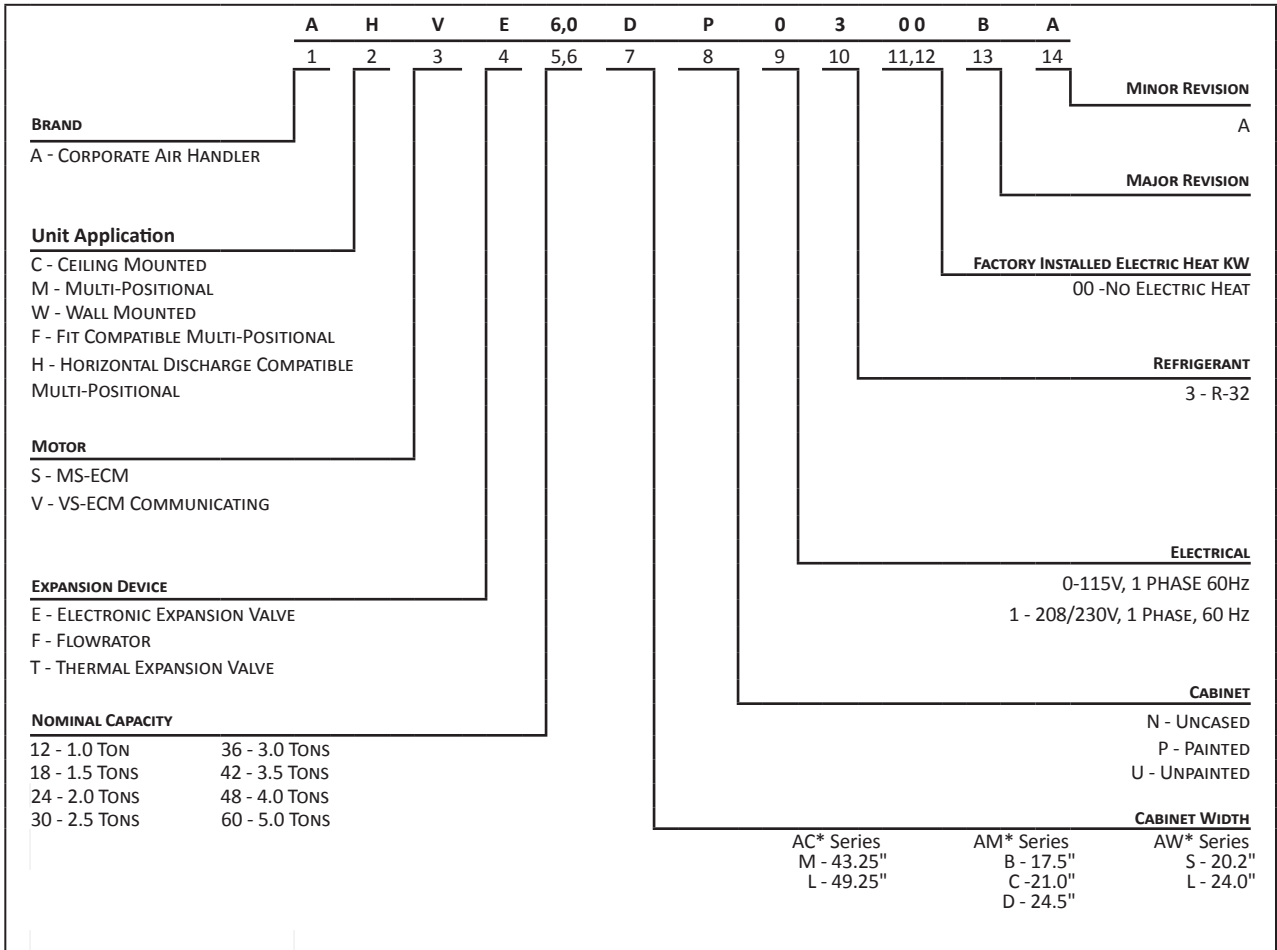


COMPANY WITH  
QUALITY SYSTEM  
CERTIFIED BY DNV GL  
= ISO 9001 =

COMPANY WITH  
ENVIRONMENTAL SYSTEM  
CERTIFIED BY DNV GL  
= ISO 14001 =

\* Complete warranty details available from your local dealer or at [www.amana-hac.com](http://www.amana-hac.com). To receive the 10-Year Parts Limited Warranty, online registration must be completed within 60 days of installation. Online registration is not required in California or Québec. The duration of warranty coverage in Texas and Florida differs in some cases.

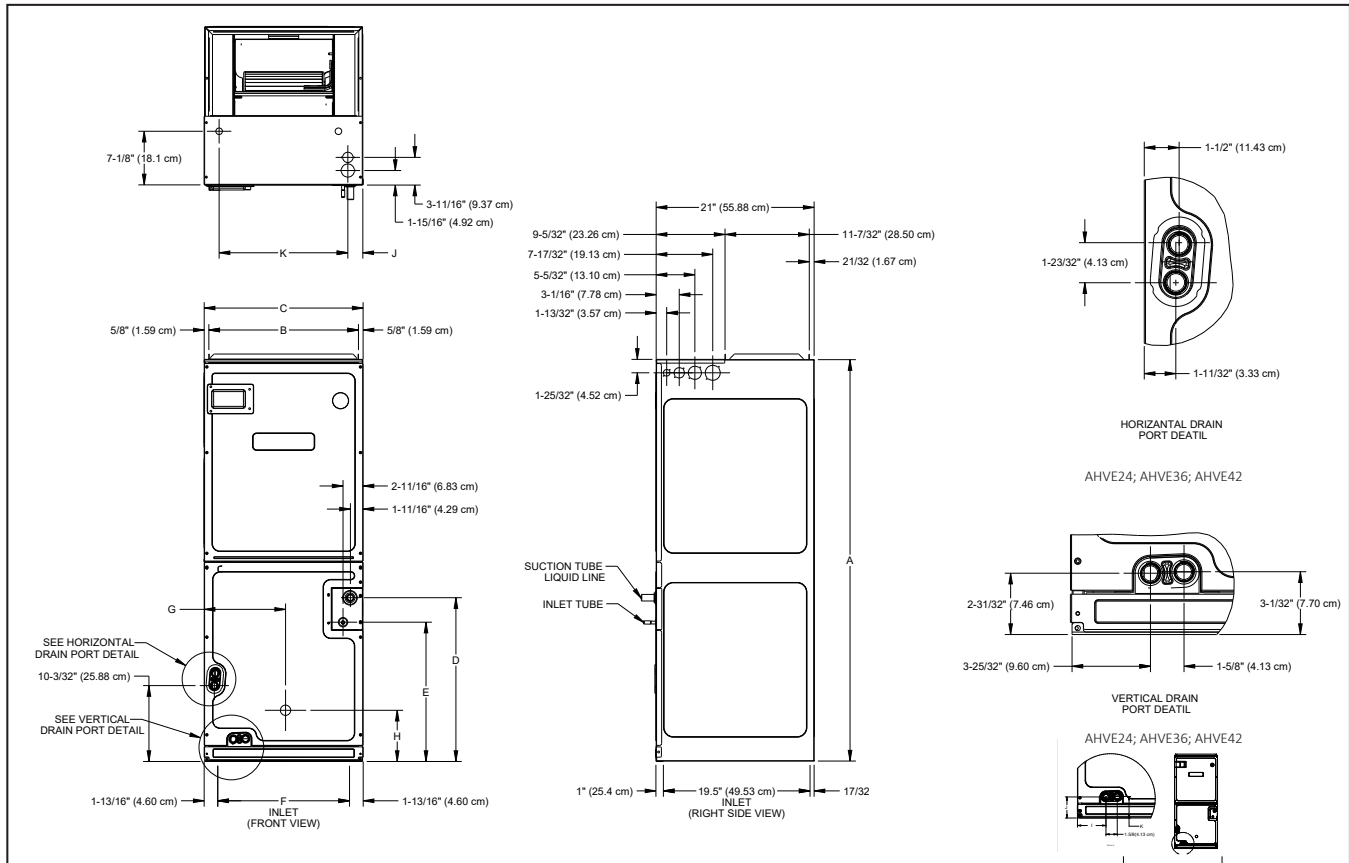
NOMENCLATURE



\*Refer S&R Plate

	AHVE24 BP0300	AHVE36 CP0300	AHVE42 CP0300	AHVE48 CP0300	AHVE48 DP0300	AHVE60 DP0300
<b>NOMINAL TONS</b>	2.0Ton	3.0Ton	3.5Ton	4.0Ton	4.0Ton	5.0Ton
Blower						
Diameter	9½"	10⅝"	10⅝"	12"	12"	12"
Width	6"	10⅝"	10⅝"	10⅝"	10⅝"	10⅝"
<b>TUBING CONNECTION</b>						
Liquid - Refrigerant	⅜"	⅜"	⅜"	⅜"	⅜"	⅜"
Suction - Refrigerant	¾"	⅞"	⅞"	⅞"	⅞"	⅞"
Coil Drain Connection (NPT)	¾"	¾"	¾"	¾"	¾"	¾"
<b>ELECTRICAL DATA</b>						
Voltage - Phase	115-1	115-1	115-1	115-1	115-1	115-1
Min Circuit Ampacity	7.1	10.4	10.4	10.4	10.4	13.4
Max. Overcurrent Device (amps)	15	15	15	15	15	20
Minimum VAC	103	103	103	103	103	103
Maximum VAC	126	126	126	126	126	126
<b>BLOWER MOTOR</b>						
FLA	5.7	8.3	8.3	8.3	8.3	10.7
HP	½	¾	¾	¾	¾	1
<b>SHIP WEIGHT (LBS)</b>	115	140	140	148	150	167

**DIMENSIONS**



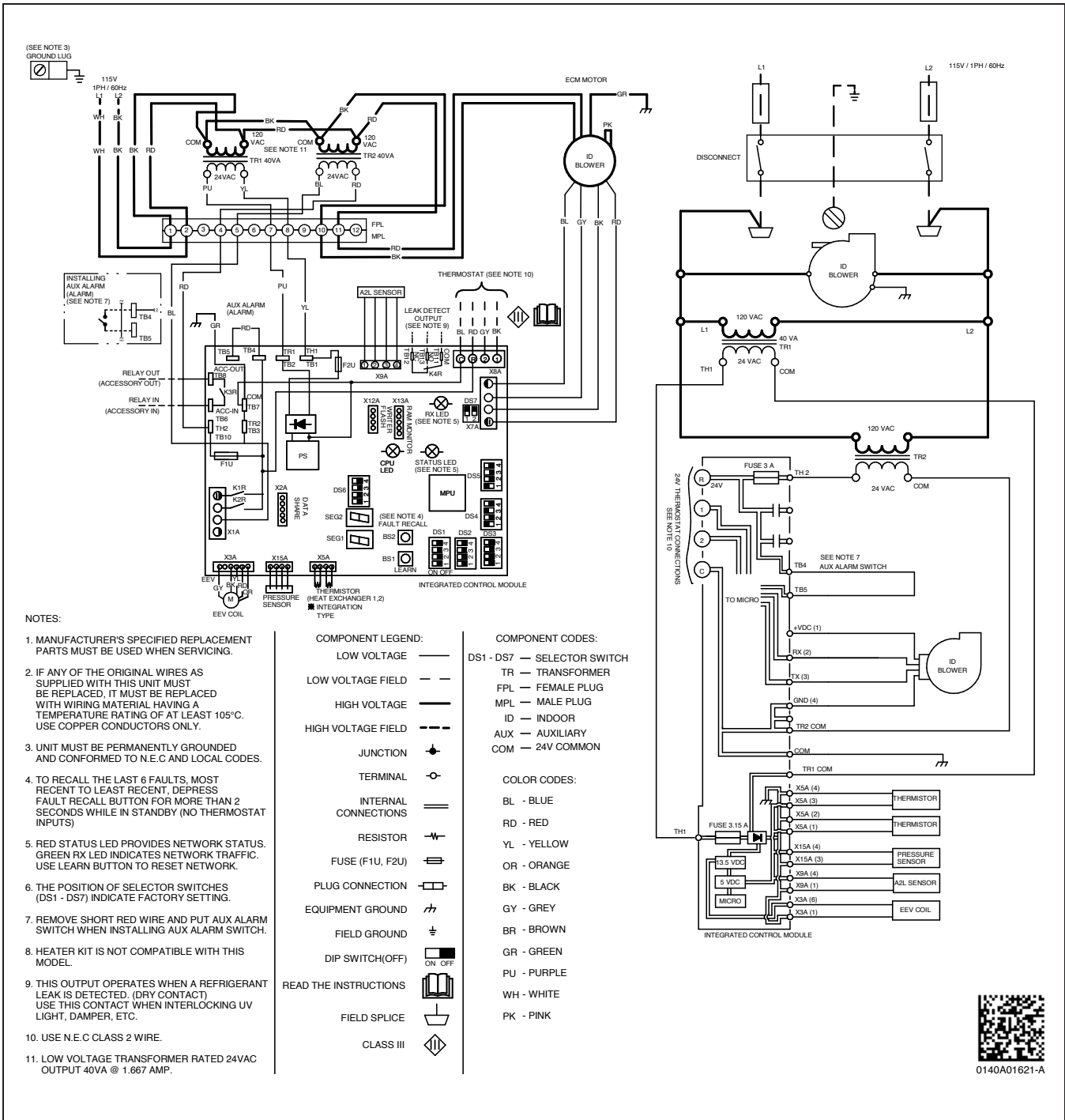
MODEL	A	B	C	D	E	F	G	H	I	J	K
AHVE24BP0300	45	16 <sup>3</sup> / <sub>8</sub>	17 <sup>1</sup> / <sub>2</sub>	15 <sup>5</sup> / <sub>8</sub>	12	14 <sup>1</sup> / <sub>8</sub>	9	12 <sup>3</sup> / <sub>4</sub>	3 <sup>13</sup> / <sub>16</sub>	2 <sup>7</sup> / <sub>8</sub>	2 <sup>15</sup> / <sub>16</sub>
AHVE36CP0300	53 <sup>7</sup> / <sub>16</sub>	19 <sup>7</sup> / <sub>8</sub>	21	21 <sup>13</sup> / <sub>16</sub>	18 <sup>5</sup> / <sub>8</sub>	17 <sup>11</sup> / <sub>16</sub>	10 <sup>13</sup> / <sub>16</sub>	6 <sup>13</sup> / <sub>16</sub>	3 <sup>13</sup> / <sub>16</sub>	2 <sup>7</sup> / <sub>8</sub>	2 <sup>15</sup> / <sub>16</sub>
AHVE42CP0300	53 <sup>7</sup> / <sub>16</sub>	19 <sup>7</sup> / <sub>8</sub>	21	21 <sup>13</sup> / <sub>16</sub>	18 <sup>5</sup> / <sub>8</sub>	17 <sup>11</sup> / <sub>16</sub>	10 <sup>13</sup> / <sub>16</sub>	6 <sup>13</sup> / <sub>16</sub>	3 <sup>13</sup> / <sub>16</sub>	2 <sup>7</sup> / <sub>8</sub>	2 <sup>15</sup> / <sub>16</sub>
AHVE48CP0300	58	19 <sup>13</sup> / <sub>16</sub>	21	26 <sup>3</sup> / <sub>16</sub>	22 <sup>15</sup> / <sub>16</sub>	14 <sup>10</sup> / <sub>16</sub>	10 <sup>13</sup> / <sub>16</sub>	6 <sup>13</sup> / <sub>16</sub>	3 <sup>13</sup> / <sub>16</sub>	2	17 <sup>7</sup> / <sub>8</sub>
AHVE48DP0300	53 <sup>7</sup> / <sub>16</sub>	23 <sup>5</sup> / <sub>16</sub>	24 <sup>1</sup> / <sub>2</sub>	21 <sup>1</sup> / <sub>2</sub>	18 <sup>5</sup> / <sub>16</sub>	21 <sup>3</sup> / <sub>16</sub>	12 <sup>5</sup> / <sub>8</sub>	6 <sup>7</sup> / <sub>8</sub>	4	3	3 <sup>3</sup> / <sub>32</sub>
AHVE60DP0300	58	23 <sup>5</sup> / <sub>16</sub>	24 <sup>1</sup> / <sub>2</sub>	26 <sup>7</sup> / <sub>8</sub>	22 <sup>7</sup> / <sub>8</sub>	21 <sup>3</sup> / <sub>16</sub>	12 <sup>5</sup> / <sub>8</sub>	13 <sup>1</sup> / <sub>4</sub>	4	3	3 <sup>3</sup> / <sub>32</sub>

**RATED INDOOR AIRFLOW RATE [SCFM]**

ID UNIT	OD UNIT	STATIC PRESSURE [WC]									
		0.1	0.2	0.3	0.4	0.5	0.6	0.7	0.8	0.9	
AHVE24BP0300	AZV6SA1810A*/GZV6SA1810A*	610	610	610	610	610	610	610	610	610	610
	AZV6SA2410A*/GZV6SA2410A*	800	800	800	800	800	800	800	800	800	800
AHVE36CP0300	AZV7SA2410A*/GZV7SA2410A*	800	800	800	800	800	800	800	800	800	800
	AZV6SA3010A*/GZV6SA3010A*	1010	1010	1010	1010	1010	1010	1010	1010	1010	1010
AHVE42CP0300	AZV6SA3610A*/GZV6SA3610A*	1260	1260	1260	1260	1260	1260	1260	1260	1260	1260
	AZV7SA3610A*/GZV7SA3610A*	1260	1260	1260	1260	1260	1260	1260	1260	1260	1260
	AZV6SA4210A*/GZV6SA4210A*	1320	1320	1320	1320	1320	1320	1320	1320	1320	1320
AHVE48CP0300	AZV7SA3610A*/GZV7SA3610A*	1260	1260	1260	1260	1260	1260	1260	1260	1260	1260
	AZV6SA4210A*/GZV6SA4210A*	1320	1320	1320	1320	1320	1320	1320	1320	1320	1320
AHVE48DP0300	AZV6SA4810A*/GZV6SA4810A*	1380	1380	1380	1380	1380	1380	1380	1380	1380	1380
	AZV7SA3610A*/GZV7SA3610A*	1260	1260	1260	1260	1260	1260	1260	1260	1260	1260
	AZV6SA4210A*/GZV6SA4210A*	1320	1320	1320	1320	1320	1320	1320	1320	1320	1320
AHVE60DP0300	AZV6SA4810A*/GZV6SA4810A*	1380	1380	1380	1380	1380	1380	1380	1380	1380	1380
	AZV7SA3610A*/GZV7SA3610A*	1260	1260	1260	1260	1260	1260	1260	1260	1260	1260
	AZV6SA4210A*/GZV6SA4210A*	1320	1320	1320	1320	1320	1320	1320	1320	1320	1320
	AZV7SA4210A*/GZV7SA4210A*	1380	1380	1380	1380	1380	1380	1380	1380	1380	1380
	AZV6SA6010A*/GZV6SA6010A*	1640	1640	1640	1640	1640	1640	1640	1640	1640	1640

\*The chart is for information only. For satisfactory operation, external static pressure must not exceed 0.5 wc.  
 \*Unit may provide different SCFM during electrical heater operation. See IO manual for the airflow rate.

# WIRING DIAGRAM



Wiring is subject to change. Always refer to the wiring diagram on the unit for the most up-to-date wiring.

**WARNING**

**High Voltage:** Disconnect all power before servicing or installing this unit. Multiple power sources may be present. Failure to do so may cause property damage, personal injury, or death.



**DOWNFLOW KITS**

DFKE-02
AHVE24BP0300
AHVE36CP0300
AHVE42CP0300
AHVE48CP0300
AHVE48DP0300
AHVE60DP0300

**CONDENSATE MANAGEMENT KITS\***

CMK0015	CMK0016	CMK0017
AHVE24BP0300	AHVE36CP0300	AHVE48DP0300
	AHVE42CP0300	AHVE60DP0300
	AHVE48CP0300	

\*For Horizontal application only.

**PERMANENT 1" FILTERS**

CHASSIS	PART#	SIZE
B	ALFH16201E	16.0" x 20.0"
C	ALFH1912201E	19.5" x 20.0"
D	ALFH20231E	23.0" x 20.0"

**HIGH HUMIDITY KITS**

HHK0001	HHK0002	HHK0003	HHK0011
AHVE24BP0300	AHVE36CP0300	AHVE60DP0300	AHVE48CP0300
	AHVE42CP0300	AHVE48DP0300	

**MERV 15 AIR CLEANERS**

CHASSIS	DAIKIN PREMIUM AIR CLEANER	FILTER SIZE	REPLACEMENT FILTER PART #
B	DV15-2117-AB	21"x17"	0160M00013
C	DV15-2121-AC	21"x21"	0160M00014
D	DV15-2124-AD	21"x24"	0160M00015

**15" SINGLE LAMP UV COIL PURIFIER**

MODEL	LAMP	POWER MOD	REM CORD
UC18S15-24	UCP-16013	UCP-16015	UCP-16016
UC18S15-24B	UCP-16012	UCP-16014	UCP-16016



