

AWSF SERIES

WALL-MOUNT AIR HANDLER 1½ TO 3 TONS



Contents

| | |
|------------------------------|---|
| Nomenclature | 2 |
| Accessories | 2 |
| Product Specifications | 3 |
| Dimensions | 5 |
| Airflow Data | 7 |
| Wiring Diagram | 8 |

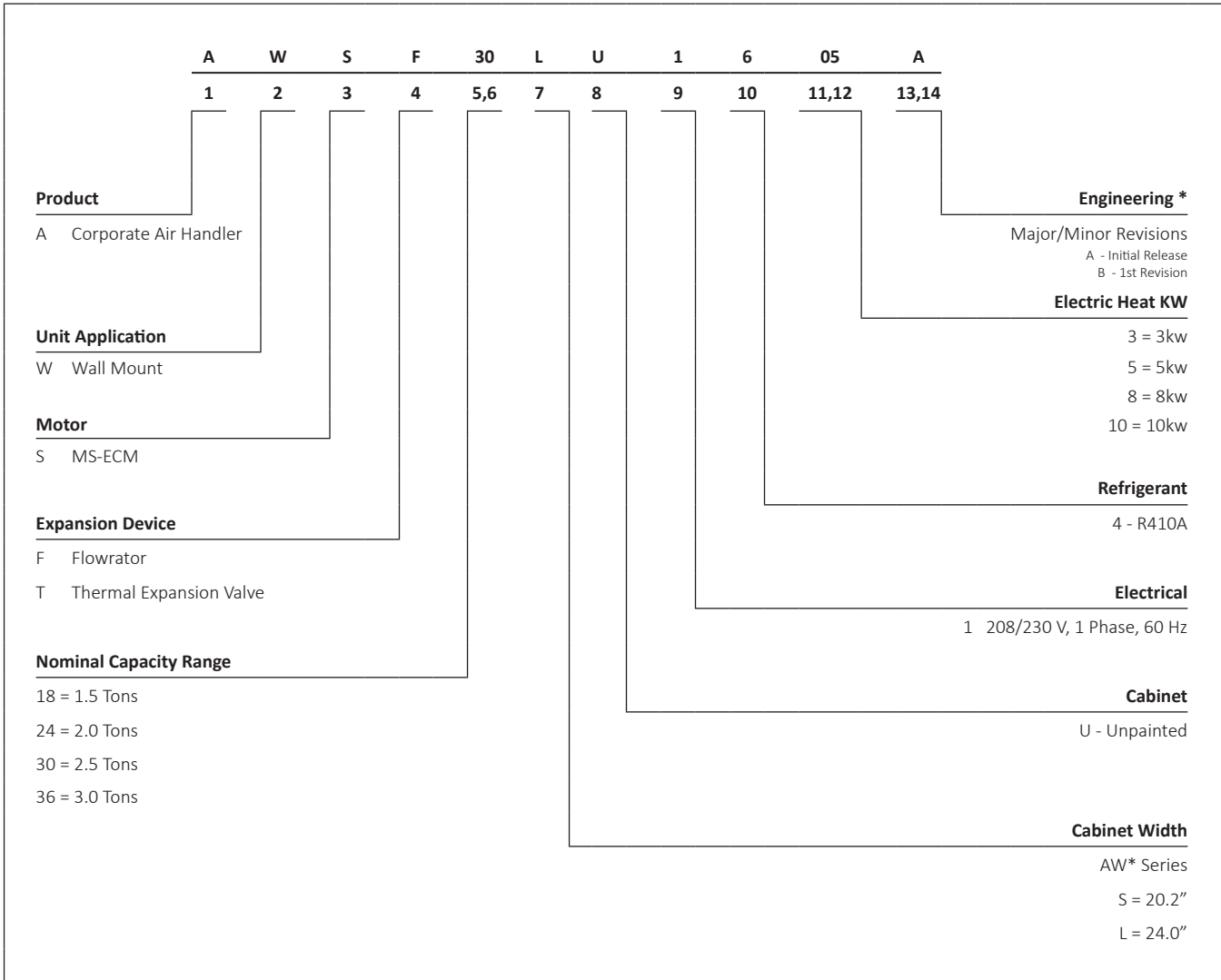
Product Features

- AWSF Models: Equipped with a Check Flowrator
- Direct-drive, multi-speed motors allows air volume variation for heating/cooling
- Sequence-controlled, rust-resistant nickel chromium heating elements of 5, 8, and 10 kW
- Aluminum tubing coils on all models
- Cabinet air leakage less than 2.0% at 1.0 inch H₂O when tested in accordance with ASHRAE standard 193
- Cabinet air leakage less than 1.4% at 0.5 inch H₂O when tested in accordance with ASHRAE standard 193
- Factory-installed pull-type disconnect
- Thermoplastic drain pan with bottom primary and secondary drain connections
- Built-in filter rack (filter included)
- Large chassis (2½- and 3-ton units) – front return only
- Small chassis (1½- and 2-ton units) – front or bottom return
- Wall-hanging bracket provided
- AHRI Certified; ETL Listed



* Complete warranty details available from your local dealer or at www.goodmanmfg.com. To receive the 10-Year Parts Limited Warranty, online registration must be completed within 60 days of installation. Online registration is not required in California or Quebec. The duration of warranty coverages in Texas differs in some cases.

NOMENCLATURE



ACCESSORIES

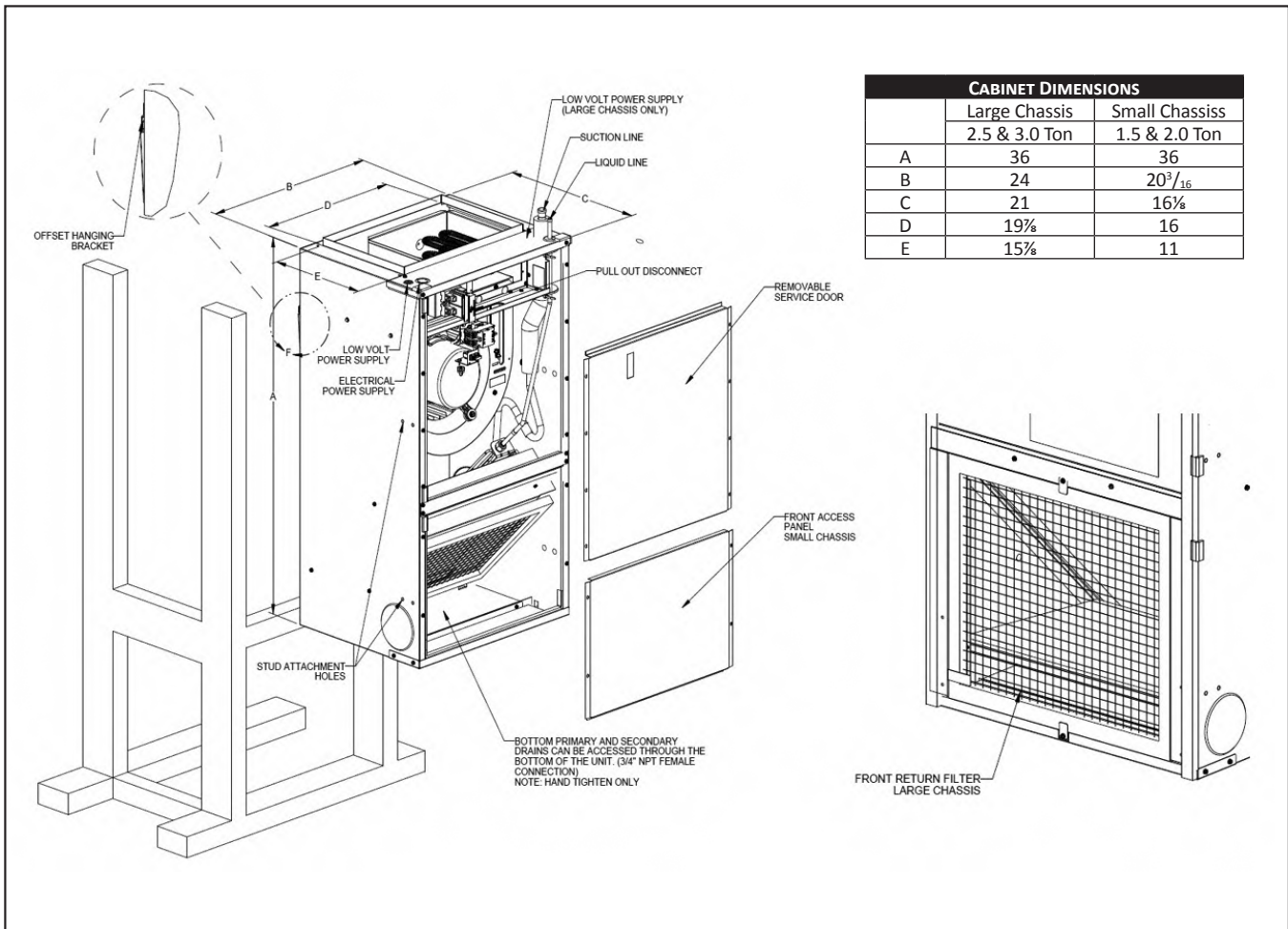
| MODEL | ITEM # | DESCRIPTION |
|---------------|--------|------------------|
| AWSF18-AWSF24 | Wad-1 | Wall access door |
| AWSF30-AWSF36 | Wad-2 | Wall access door |

| | AWSF18 SU1605 AA | AWSF18 SU1608 AA | AWSF24 SU1605 AA | AWSF24 SU1608 AA | AWSF24 SU1610 AA | AWSF30 LU1605 AA |
|--------------------------------|---------------------|---------------------|---------------------|---------------------|---------------------|---------------------|
| NOMINAL RATINGS | | | | | | |
| Cooling (BTU/h) | 18000 | 18000 | 24000 | 24000 | 24000 | 30000 |
| Electric Heat (kW) | 5 | 8 | 5 | 8 | 10 | 5 |
| BLOWER | | | | | | |
| Diameter | 10 | 10 | 10 | 10 | 10 | 10 |
| Width | 6 | 6 | 6 | 6 | 6 | 8 |
| COIL CONNECTIONS | | | | | | |
| Liquid | 3/8" | 3/8" | 3/8" | 3/8" | 3/8" | 3/8" |
| Suction | 5/8" | 5/8" | 5/8" | 5/8" | 5/8" | 3/4" |
| Coil Drain Connection (FPT) | 3/4" | 3/4" | 3/4" | 3/4" | 3/4" | 3/4" |
| ELECTRICAL DATA | | | | | | |
| Voltage | 208/230 | 208/230 | 208/230 | 208/230 | 208/230 | 208/230 |
| Minimum Circuit Ampacity | 24.9/28 | 36/41.3 | 24.9/28 | 36/41.3 | 46.6/53 | 26/29.8 |
| Max. Overcurrent Device (Amps) | 25/30 | 40/45 | 25/30 | 40/45 | 50/60 | 30/30 |
| Minimum VAC | 197 | 197 | 197 | 197 | 197 | 197 |
| Maximum VAC | 253 | 253 | 253 | 253 | 253 | 253 |
| BLOWER MOTOR | | | | | | |
| Full Load Amps (FLA) | 2.6 | 2.6 | 2.6 | 2.6 | 2.6 | 3.8 |
| Horsepower (HP) | 1/3 | 1/3 | 1/3 | 1/3 | 1/3 | 1/2 |
| SHIP WEIGHT (LBS) | 84 | 84 | 84 | 84 | 84 | 109 |

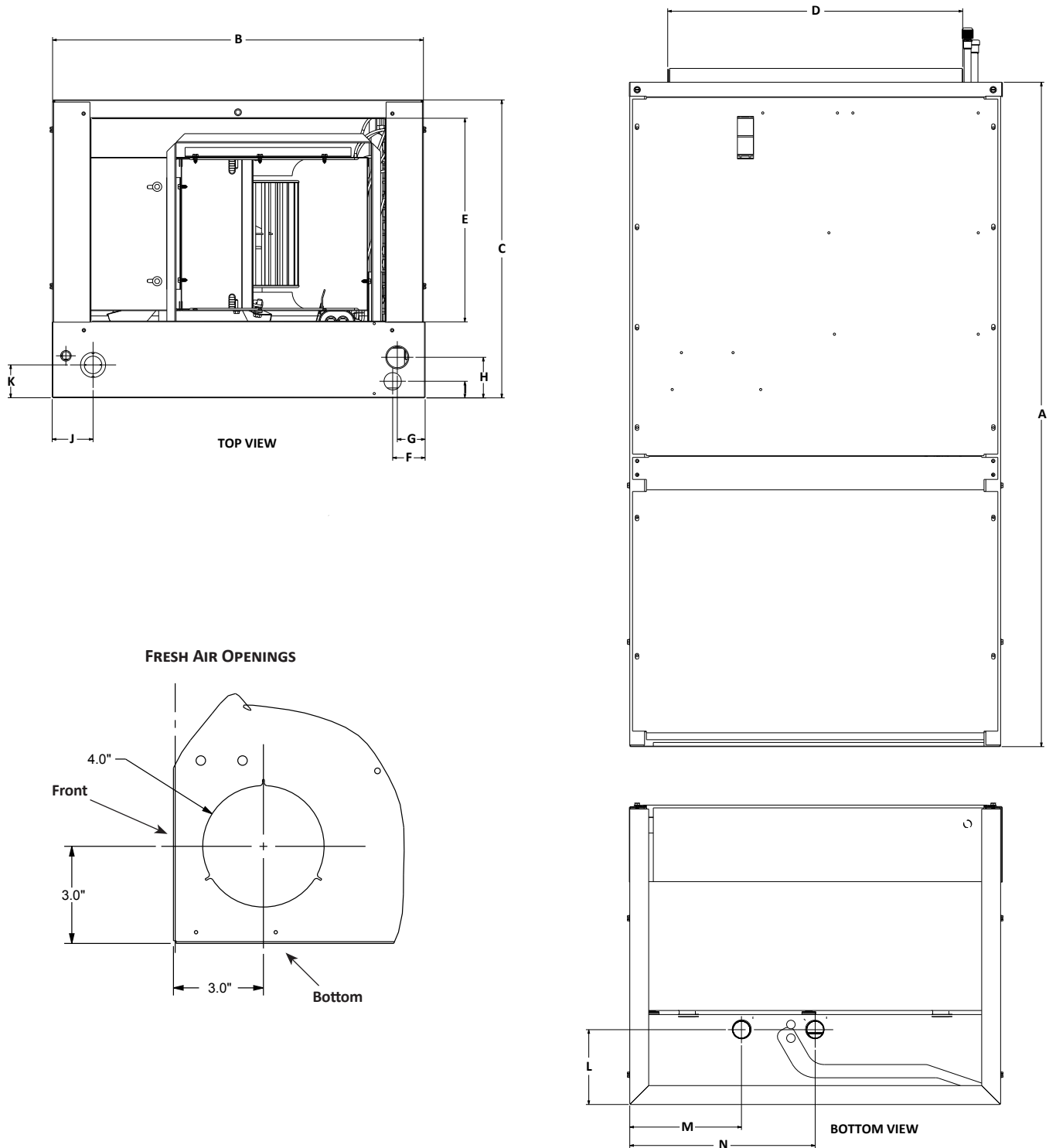
PRODUCT SPECIFICATIONS (CONTD.)

| | AWSF30 LU1608 AA | AWSF30 LU1610 AA | AWSF36 LU1605 AA | AWSF36 LU1608 AA | AWSF36 LU1610 AA |
|--------------------------------|---------------------|---------------------|---------------------|---------------------|---------------------|
| NOMINAL RATINGS | | | | | |
| Cooling (BTU/h) | 30000 | 30000 | 36000 | 36000 | 36000 |
| Electric Heat (kW) | 8 | 10 | 5 | 8 | 10 |
| BLOWER | | | | | |
| Diameter | 10 | 10 | 10 | 10 | 10 |
| Width | 8 | 8 | 8 | 8 | 8 |
| COIL CONNECTIONS | | | | | |
| Liquid | 3/8" | 3/8" | 3/8" | 3/8" | 3/8" |
| Suction | 3/4" | 3/4" | 3/4" | 3/4" | 3/4" |
| Coil Drain Connection (FPT) | 3/4" | 3/4" | 3/4" | 3/4" | 3/4" |
| ELECTRICAL DATA | | | | | |
| Voltage | 208/230 | 208/230 | 208/230 | 208/230 | 208/230 |
| Minimum Circuit Ampacity | 37.7/43 | 48/54.8 | 26/29.8 | 37.7/43 | 48/54.8 |
| Max. Overcurrent Device (Amps) | 40/45 | 50/60 | 30/30 | 40/45 | 50/60 |
| Minimum VAC | 197 | 197 | 197 | 197 | 197 |
| Maximum VAC | 253 | 253 | 253 | 253 | 253 |
| BLOWER MOTOR | | | | | |
| Full Load Amps (FLA) | 3.8 | 3.8 | 3.8 | 3.8 | 3.8 |
| Horsepower (HP) | 1/2 | 1/2 | 1/2 | 1/2 | 1/2 |
| SHIP WEIGHT (LBS) | | | | | |
| | 109 | 109 | 109 | 109 | 109 |

Note - Once installed, top of unit must be level or slightly tilted back to ensure proper condensate drainage.



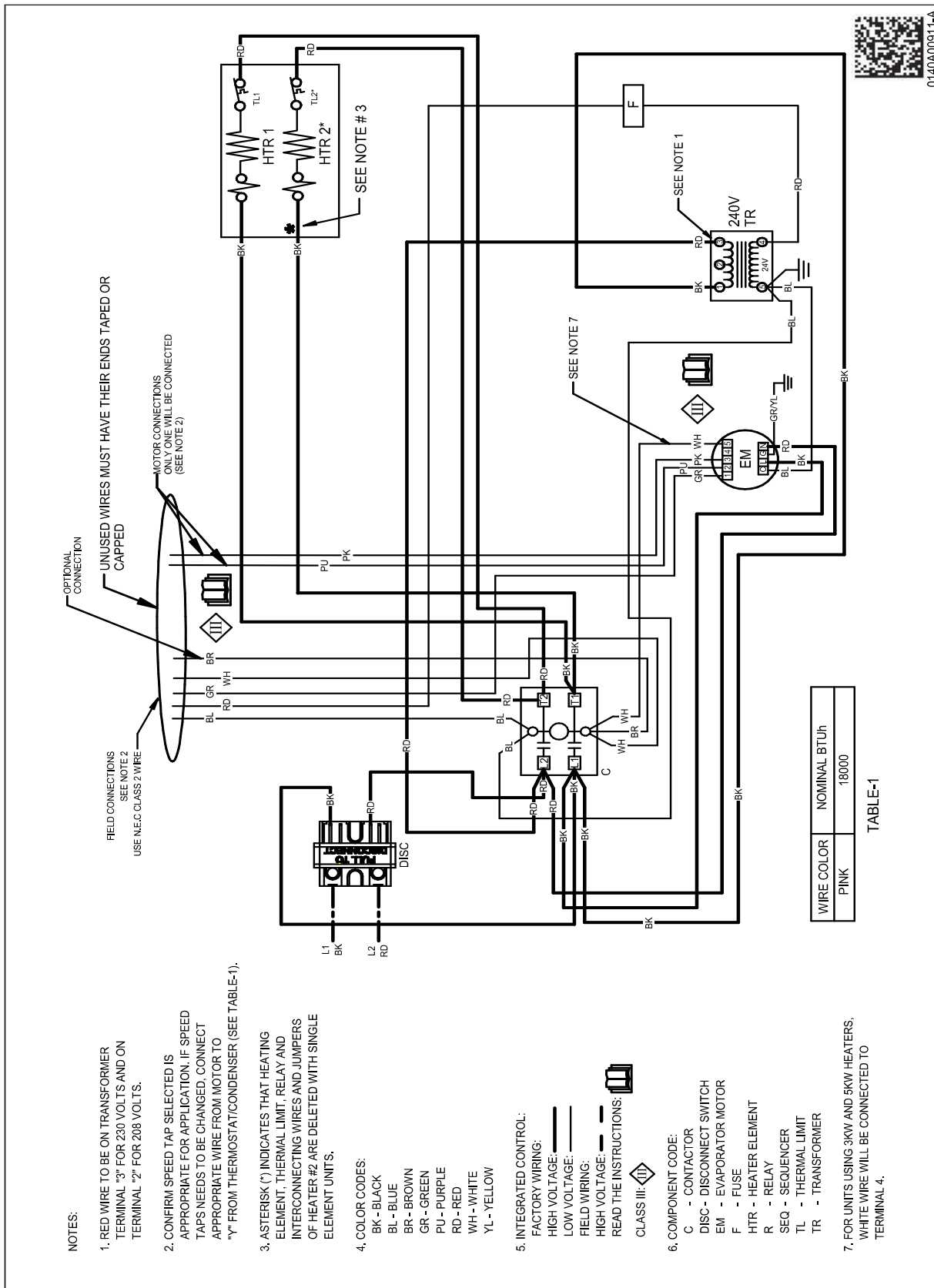
DIMENSIONS (CONTD.)



| | A | B | C | D | E | F | G | H | I | J | K | L | M | N |
|------------|-----|--------------------|--------------------|--------------------|-----|-------------------|-------------------|-------------------|-----------------|-------------------|-------------------|----|----|-----|
| AWSF 18-24 | 36" | 20 $\frac{1}{4}$ " | 16 $\frac{5}{8}$ " | 16" | 11" | 1 $\frac{3}{4}$ " | 1 $\frac{1}{2}$ " | 2 $\frac{1}{4}$ " | $\frac{7}{8}$ " | 1 $\frac{1}{8}$ " | 1 $\frac{3}{4}$ " | 4" | 6" | 10" |
| AWSF 30-36 | 36" | 24" | 21" | 19 $\frac{5}{8}$ " | 16" | 4 $\frac{1}{8}$ " | 1 $\frac{1}{2}$ " | 1 $\frac{3}{4}$ " | 2" | 1 $\frac{1}{4}$ " | 2 $\frac{3}{8}$ " | 4" | 8" | 12" |

| MODEL | SPEED TAP | CFM DELIVERED AGAINST EXTERNAL STATIC PRESSURE | | | | |
|-----------------|-----------|--|------|------|------|------|
| | | 0.1" | 0.2" | 0.3" | 0.4" | 0.5" |
| AWSF18SU16** AA | T1 | 630 | 602 | 576 | 550 | 521 |
| | T2 | 630 | 602 | 576 | 550 | 521 |
| | T3 | 637 | 609 | 586 | 557 | 531 |
| | T4 | 630 | 602 | 576 | 550 | 521 |
| | T5 | 846 | 824 | 800 | 777 | 756 |
| AWSF24SU16** AA | T1 | 630 | 602 | 576 | 550 | 521 |
| | T2 | 630 | 602 | 576 | 550 | 521 |
| | T3 | 784 | 763 | 742 | 728 | 705 |
| | T4 | 630 | 602 | 576 | 550 | 521 |
| | T5 | 846 | 823 | 800 | 777 | 756 |
| AWSF30LU16** AA | T1 | 683 | 604 | 525 | 460 | 369 |
| | T2 | 900 | 856 | 803 | 734 | 681 |
| | T3 | 1079 | 1025 | 989 | 949 | 889 |
| | T4 | 944 | 897 | 848 | 783 | 733 |
| | T5 | 1168 | 1127 | 1083 | 1050 | 1005 |
| AWSF36LU16** AA | T1 | 1114 | 1072 | 1031 | 982 | 924 |
| | T2 | 1114 | 1072 | 1031 | 982 | 924 |
| | T3 | 1225 | 1191 | 1152 | 1112 | 1071 |
| | | 1287 | 1255 | 1219 | 1183 | 1146 |
| | T5 | 1360 | 1329 | 1299 | 1264 | 1230 |

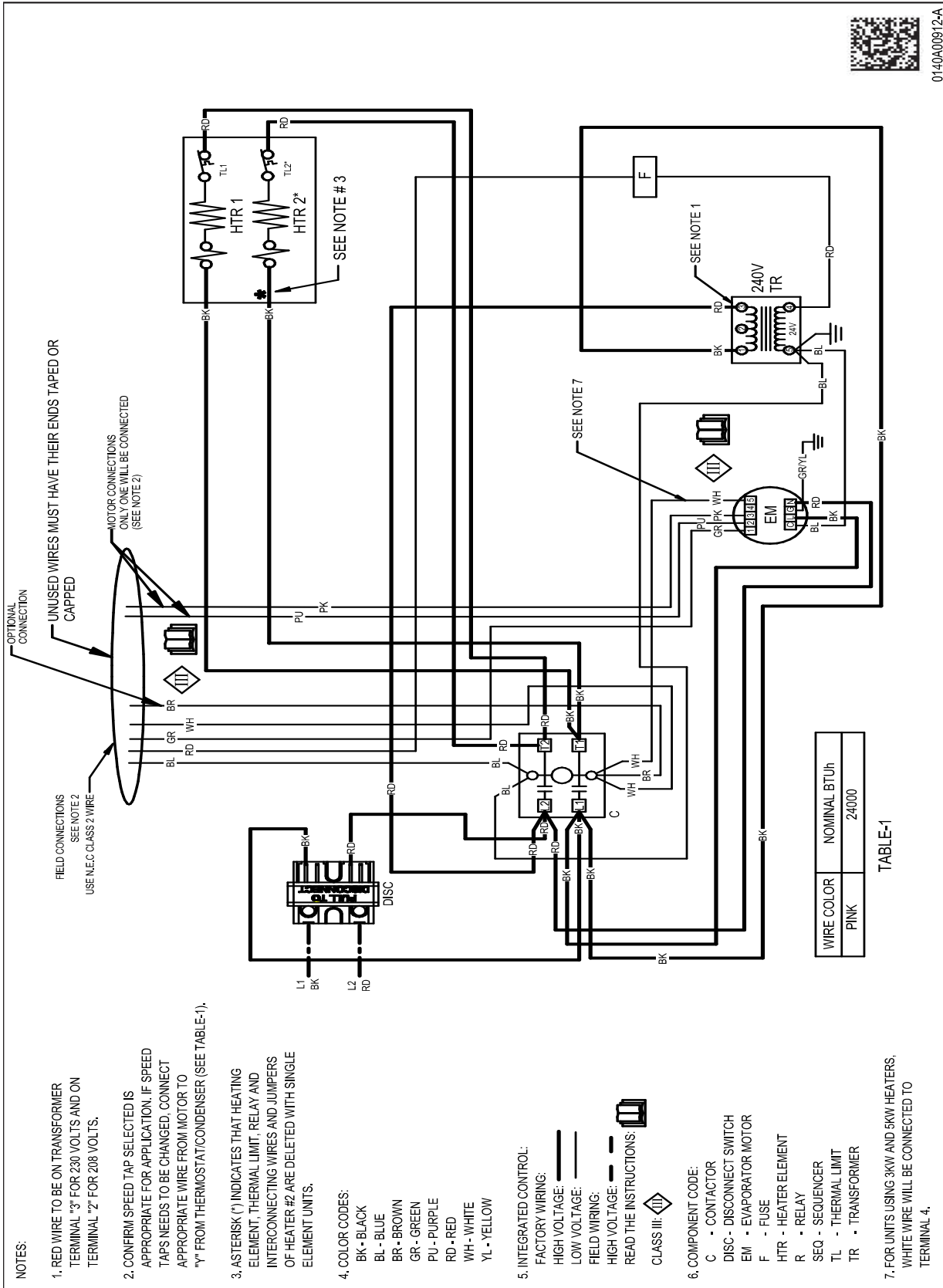
Note: Airflow data indicated is at 230 V with no filter in place.



WARNING

High Voltage: Disconnect all power before servicing or installing this unit. Multiple power sources may be present. Failure to do so may cause property damage, personal injury, or death.

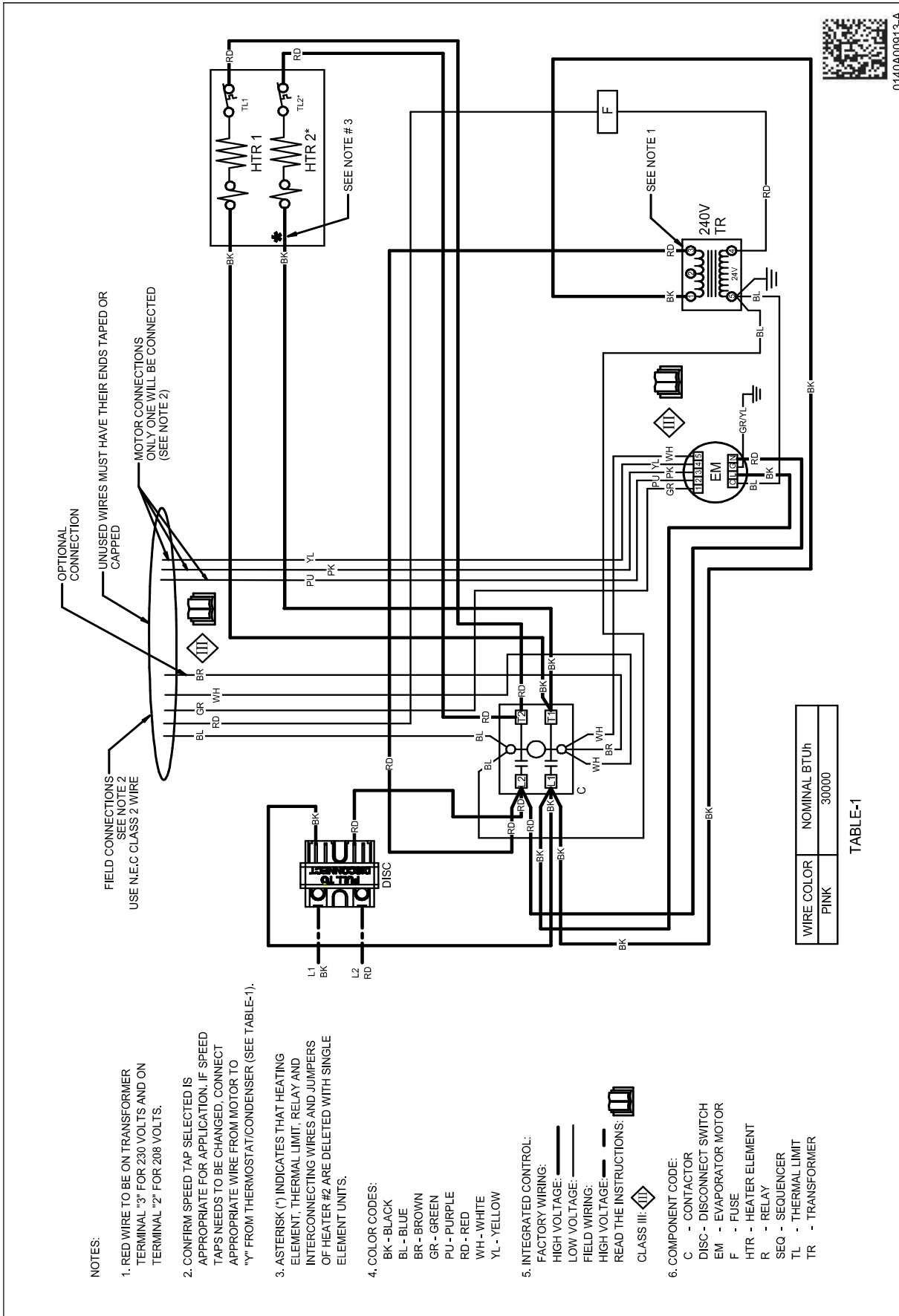
Wiring is subject to change. Always refer to the wiring diagram on the unit for the most up-to-date wiring.



⚠ **WARNING**

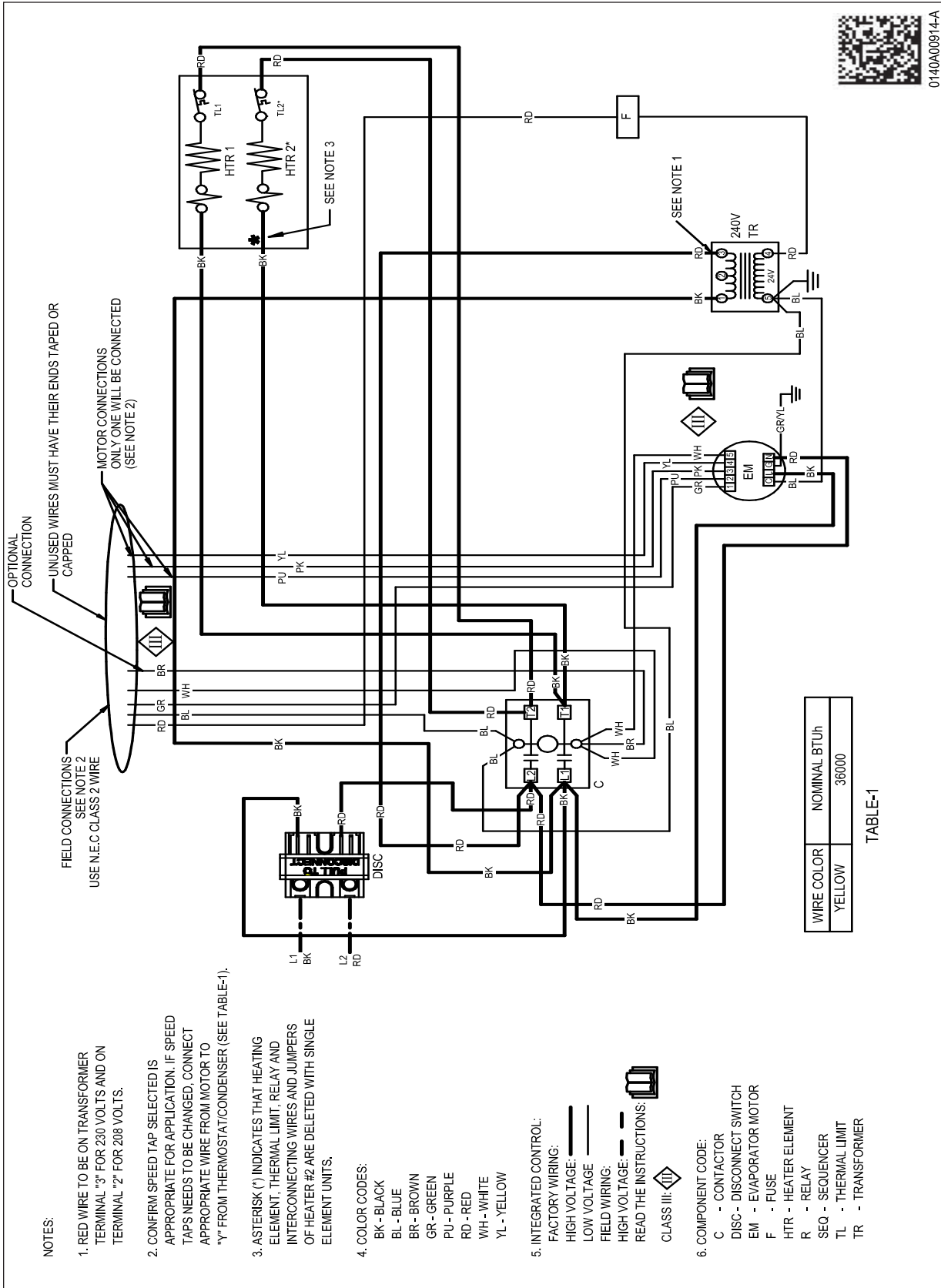
High Voltage: Disconnect all power before servicing or installing this unit. Multiple power sources may be present. Failure to do so may cause property damage, personal injury, or death.

Wiring is subject to change. Always refer to the wiring diagram on the unit for the most up-to-date wiring.



⚠ **WARNING** High Voltage: Disconnect all power before servicing or installing this unit. Multiple power sources may be present. Failure to do so may cause property damage, personal injury, or death.

Wiring is subject to change. Always refer to the wiring diagram on the unit for the most up-to-date wiring.










NOTES:

1. RED WIRE TO BE ON TRANSFORMER TERMINAL "3" FOR 230 VOLTS AND ON TERMINAL "2" FOR 208 VOLTS.
2. CONFIRM SPEED TAP SELECTED IS APPROPRIATE FOR APPLICATION. IF SPEED TAPS NEEDS TO BE CHANGED, CONNECT APPROPRIATE WIRE FROM MOTOR TO "Y" FROM THERMOSTAT/CONDENSER (SEE TABLE-1).
3. ASTERISK (*) INDICATES THAT HEATING ELEMENT, THERMAL LIMIT, RELAY AND INTERCONNECTING WIRES AND JUMPERS OF HEATER #2 ARE DELETED WITH SINGLE ELEMENT UNITS.

4. COLOR CODES:

- BK - BLACK
- BL - BLUE
- BR - BROWN
- GR - GREEN
- PU - PURPLE
- RD - RED
- WH - WHITE
- YL - YELLOW

5. INTEGRATED CONTROL:

- FACTORY WIRING:  HIGH VOLTAGE: 
 LOW VOLTAGE: 
 FIELD WIRING: 
 HIGH VOLTAGE: 
 READ THE INSTRUCTIONS: 
 CLASS III: 

6. COMPONENT CODE:

- C - CONTACTOR
- DISC - DISCONNECT SWITCH
- EM - EVAPORATOR MOTOR
- F - FUSE
- HTR - HEATER ELEMENT
- R - RELAY
- SEQ - SEQUENCER
- TL - THERMAL LIMIT
- TR - TRANSFORMER



0140A00914-A

Wiring is subject to change. Always refer to the wiring diagram on the unit for the most up-to-date wiring.



WARNING

High Voltage: Disconnect all power before servicing or installing this unit. Multiple power sources may be present. Failure to do so may cause property damage, personal injury, or death.



