

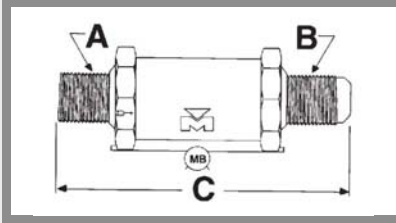
## Straight Thru


**Features:**

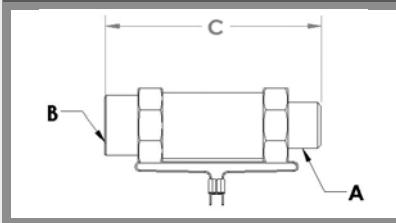
- Working temperature range (TS): -40°F/300°F, -40°C/149°C
- Designed primarily for use on liquid receiver applications above the liquid refrigerant level (it is recommended that the factory be consulted before the valves are used on their applications)
- Satisfy ASHRAE Standard 15 code requirements for a refrigerant vessel safety device (Application information can also be found in ASHRAE Guide and Data Book)
- Comply with ASME code for unfired pressure vessels
- Discharge rates are certified by National Board of Boiler & Pressure Vessel Inspectors
- Designed for maximum discharge capacities
- CE Certified, CRN, Compatible with all CFC, HCFC and HFC refrigerants and oils

**References:**

- \* PTFE Seat
- \*\* Certification does not include CE or CRN
- \*\*\*\* Prefixed for standard pressure settings

**NPTFE Inlet to Flare Outlet**


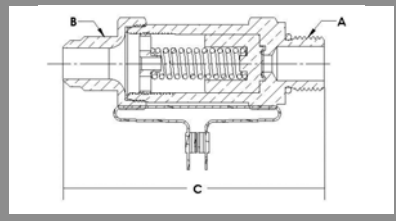
Part Number ****	NPTFE A (in)	Flare B (in)	C (in)	C (mm)	Wt (lb)	Wt (kg)	Discharge Table	Working Pressure
A 15501	1/4	3/8	2.65	67	0.20	0.09	A	150 - 450 psi
A 15502	3/8	3/8	2.81	71	0.34	0.15	B	150 - 700 psi
A 15503	3/8	1/2	3.00	76	0.35	0.16	B	150 - 700 psi
B 33752	1/4	3/8	2.81	71	0.00	0.00	B	150 - 700 psi
B 33753	1/4	1/2	3.00	76	0.41	0.18	B	150 - 700 psi
A 15504	1/2	5/8	4.20	107	0.84	0.38	C	150 - 700 psi
A 18737	**	3/8	5/8	107	0.96	0.44	C	150 - 700 psi
A 18783	**	3/8	1/2	107	0.96	0.44	C	150 - 700 psi

**NPTFE Inlet to NPTFI Outlet**


Part Number ****	NPTFE A (in)	NPTFI B (in)	C (in)	C (mm)	Wt (lb)	Wt (kg)	Discharge Table	Working Pressure
A 18736	**	3/4	3/4	4.20	0.97	0.44	C	150 - 700 psi
A 18762	**	1/2	3/4	4.20	0.97	0.44	C	150 - 700 psi
A 15506		3/4	3/4	4.95	1.53	0.69	D	150 - 450 psi
A 17840		1	1	4.60			E	150 - 450 psi
A 18735	**	3/4	1	4.60	1.49	0.68	E	150 - 450 psi
A 17834		1 1/4	1 1/4	4.94	2.00	0.91	F	150 - 450 psi
A 18387		1	1	4.94	1.81	0.82	F	150 - 450 psi
A 18356		1/2	1/2	3.99	0.96	0.43	G	150 - 450 psi
A 18357		1/2	3/4	3.99	0.89	0.40	G	150 - 450 psi
A 18358		3/4	3/4	3.99	0.93	0.42	G	150 - 450 psi
AW18422	*	3/4	3/4	4.95	1.60	0.73	H	600 - 700 psi
A 18424	*	1	1	4.77	1.58	0.72	J	150 - 350 psi
A 18425	*	1 1/4	1 1/4	5.24	2.17	0.99	K	150 - 450 psi
A 18444	*	1	1 1/4	5.24			K	150 - 450 psi

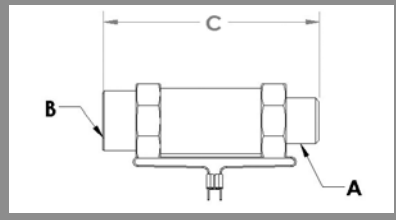
## Straight Thru

### Straight Thread Inlet to Flare Outlet



Part Number ****	Inlet A (in)	Outlet B (in)	C (in)	C (mm)	Wt (lb)	Wt (kg)	Discharge Table	Working Pressure
B 35413	7/8 - 14UNF - 2A	5/8	4.19	106	0.92	0.42	C	150 - 700 psi

### Straight Thread Inlet to NPTFI Outlet



Part Number ****	Inlet A (in)	Outlet B (in)	C (in)	C (mm)	Wt (lb)	Wt (kg)	Discharge Table	Working Pressure
B 34444	7/8 - 14UNF - 2A	3/4	5.00	127	1.52	0.69	D	150 - 450 psi
B 34519	1 5/16 - 12UNF - 2S	1	4.38	111	1.37	0.62	E	150 - 450 psi
B 34580	1 5/8 - 12UNF - 2A	1 1/4	5.00	127	2.00	0.91	F	150 - 450 psi

Prefix	PSIG	BAR	Discharge Capacity (air/min)																							
			A		B		C		D		E		F		G		H		I		J		K			
			lb	Kg	lb	Kg	lb	Kg	lb	Kg	lb	Kg	lb	Kg	lb	Kg	lb	Kg	lb	Kg	lb	Kg	lb	Kg		
AD/BD	235	16	4.3	2.0	9.1	4.1	20.1	9.1	33.7	15.3	55.9	25.4	91.8	41.6	39.0	17.7			29.0	13.2	60.6	27.5	90.3	41.0		
AE/BE	300	21	5.4	2.4	11.5	5.2	25.4	11.5	42.5	19.3	70.5	32.0	115.8	52.5	49.2	22.3			36.6	16.6	76.5	34.7	113.9	51.7		
AG/BG	350	24	6.3	2.9	13.3	6.0	29.5	13.4	49.3	22.4	81.8	37.1	134.3	60.9	57.1	25.9			42.4	19.2	88.7	40.2	132.1	59.9		
AH/BH	400	28	7.1	3.2	15.2	6.9	33.5	15.2	56.1	25.4	93.0	42.2	152.7	69.3	64.9	29.4			48.2	21.9			150.3	68.2		
AJ/BI	425	29	7.6	3.4	16.1	7.3	35.6	16.1	59.5	27.0	98.6	44.7	162.0	73.5	68.8	31.2			51.2	23.2			159.4	72.3		
AJ/BJ	450	31	8.0	3.6	17.0	7.7	37.6	17.1	62.9	28.5	104.3	47.3	171.2	77.7	72.8	33.0			54.1	24.5			168.5	76.4		
AX/BX	451 - 550				20.7	9.4																				
AW/BW	551 - 575				21.6	9.8	47.7	21.6																		
AW/BW	576 - 600				22.5	10.2	49.7	22.5									88.9	40.3								
AW/BW	601 - 625				23.4	10.6	51.7	23.5									92.6	42.0								
AW/BW	626 - 650				24.3	11.0	53.7	24.4									96.2	43.6								
AW/BW	651 - 675				25.3	11.5	55.8	25.3									99.8	45.3								
AW/BW	676 - 680				25.4	11.5	56.2	25.5									100.5	45.6								
AW/BW	681 - 700				26.2	11.9	57.8	26.2									103.4	46.9								