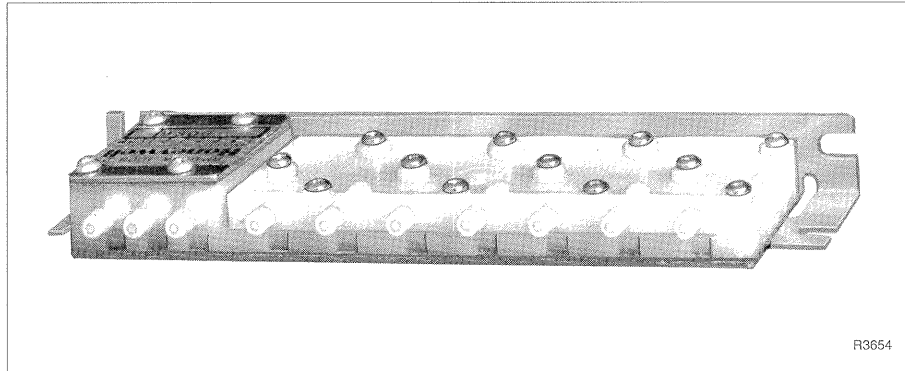


## RP913A Load Analyzer



### *General*

The RP913A is a diaphragm logic pressure selector used in pneumatic control applications to select the highest and/or lowest branch pressure input from zone thermostats. It will select the highest pressure demand (cooling) and/or lowest pressure demand (heating) to operate final control elements.

### *Features*

- Seven input manifold containing logic diaphragm, air filter, and restrictions
- Ten sharp barb connectors for all piping requirements
- Large integral filter assures clean air to the manifold
- Requires no field adjustment, and plastic construction results in minimum maintenance
- Two analyzers can be connected together to increase inputs to twelve

## Description

The RP913A is a diaphragm logic pressure selector used in pneumatic control applications to select the highest and/or lowest branch pressure input from zone thermostats. It will select the highest pressure demand (cooling) and/or lowest pressure demand (heating) to operate final control elements.

## Specifications

**Model:**

RP913A

**Operating Temperature Range:**

40 to 140F (4 to 60C)

**Air Consumption:**

0.04 scfm (0.019 L/s)

**Supply Air Pressure**

18 psi (124 kPa)

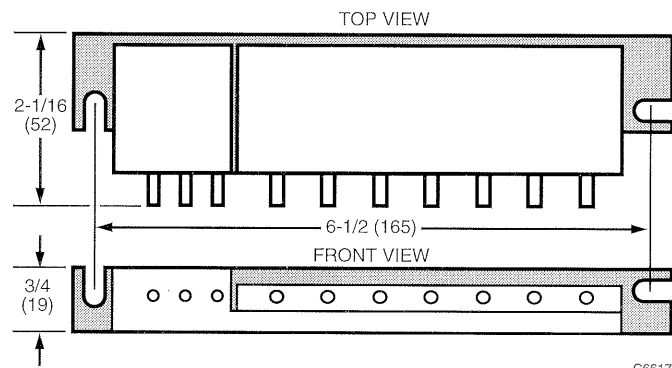
**Maximum Air Pressure**

25 psi (172 kPa)

**Air Connections:**

Ten sharp barb type of 1/4-in. OD plastic tubing ("M", "H", "L", "1-7" inputs). Plug unused output (H or L port)

**Dimensions In Inches (Millimeters):**



**Honeywell**

*Helping You Control Your World*

**Home and Building Control**

Honeywell Inc.  
Honeywell Plaza  
P.O. Box 524  
Minneapolis, MN 55408-0524

**Home and Building Control**

Honeywell Limited-Honeywell Limitée  
740 Ellesmere Road  
Scarborough, Ontario  
M1P 2V9