



**UL**  
UL RECOGNIZED



## THERMOSTATS, GENERAL PURPOSE L & LD SERIES

"L" and "LD" Series Thermostats are used in most home laundry dryers, and also for fan and limit applications. Thermostats open on rise and close when the temperature differential is reached. All thermostats are both U.L. Recognized and C.S.A. Certified. 1/4" quick disconnect terminals are provided.

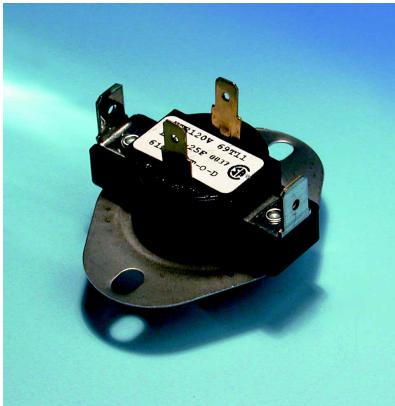
### "L" SERIES THERMOSTATS, SINGLE POLE - SINGLE THROW

PART NO.	°DIFF.	OPEN°F	CLOSE°F
L120	10	120	110
L125	10	125	115
L130	15	130	115
L135	15	135	120
L140	20	140	120
L145	20	145	125
L150	20	150	130
L155	20	155	135
L160	20	160	140
L165	20	165	145
L170	20	170	150
L175	20	175	155
L180-20	20	180	160
L180-40	40	180	140
L190	40	190	150
L200	40	200	160
L205	40	205	165
L225	40	225	185
L240	40	240	200
L250	40	250	210
L260	40	260	220
L270	40	270	230
L290	40	290	250
L300	40	300	260
L320	40	320	280
L340	40	340	300

### "LD" SERIES THERMOSTATS, SINGLE POLE - DOUBLE THROW

PART NO.	DIFF.	OPEN°F	CLOSE°F	REPLACES
LD135	15	135	120	
LD140	20	140	120	
LD145	20	145	125	
LD14520W	20	145	125	WHP3398128
LD155	20	155	135	
LD155W	25	155	130	WHP3387134
LD15510W	10	155	145	WHP3387138
LD170	20	170	150	
LD190	20	190	170	
LD200	40	200	160	
LD225	40	225	185	
LD240	40	240	200	
LD270	40	270	230	
LD290	40	290	250	
LD290W	40	290	250	WHP342763 WHP279054

Resistive Heater Load: 25 Amps @ 120/240 VAC



**NEW!**

**NEW!**

**NEW!**

## T45 UNIVERSAL TRANSFORMER

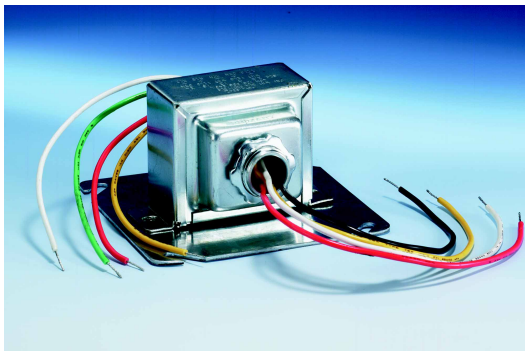
A versatile transformer that can be used for many different applications. Accepts input voltages of 120, 208, and 240 VAC and provides a choice of secondary voltages of 2.5, 8, 12, 16 and 24 VAC.

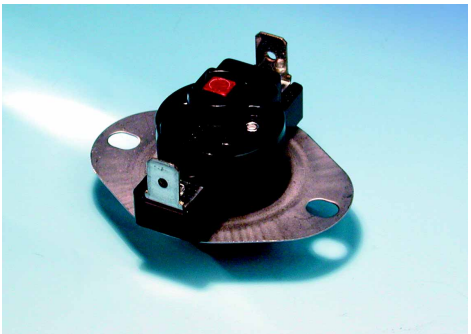
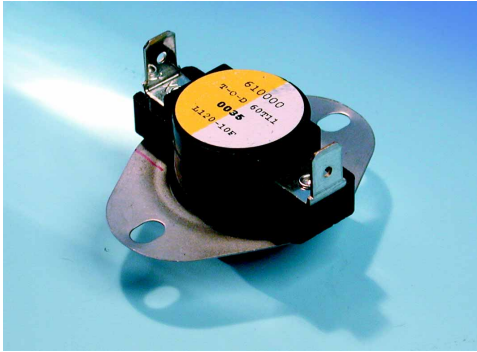
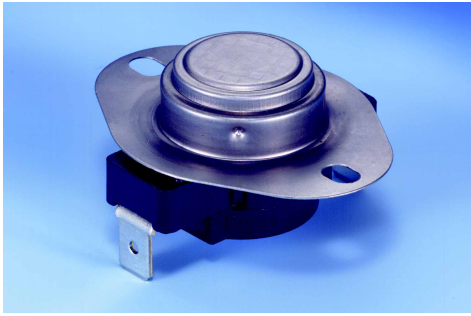
### T-45 UNIVERSAL TRANSFORMER 50/60 Hz CLASS 2

#### ENCLOSED FRAME - PLATE, FOOT OR KNOCK-OUT MOUNT

PART NO.	PRIMARY VAC	SECONDARY VAC	VA	H	W	D	MW
T45	120/208/240	2.5, 8, 12, 16 and 24	48	2 1/16"	3 1/4"	2 3/4"	2 13/16"

**NOTE:** Transformer is furnished with a 4" x 4" mounting plate, wire nuts, 1/2" conduit and 8" leads.





## FAN & LIMIT CONTROLS - FIXED SETTINGS

This series is engineered for use in air stream or surface mounting applications. A complete series designed for on-the-job use.

FAN CONTROL - CLOSE ON RISE		
PART NO.	CUT-IN	CUT-OUT
SHF90	90	80
SHF110	110	90
SHF120	120	110
SHF130	130	115
SHF140	140	120
SHF150	150	130
SHF160	160	140
SHF170	170	150
SHF200	200	180
SHF250	250	220

LIMIT CONTROL - OPEN ON RISE		
PART NO.	CUT-IN	CUT-OUT
SHL120	110	120
SHL140	100	140
SHL150	110	150
SHL160	120	160
SHL170	130	170
SHL180	140	180
SHL190	150	190
SHL200	160	200
SHL210	170	210
SHL230	190	230
SHL250	210	250
SHL300	250	300
SHL325	275	325

LIMIT CONTROL - MANUAL RESET		
PART NO.	CUT-IN	CUT-OUT
SHM160		160
SHM170	Manual	170
SHM180	Reset	180
SHM190	Manual	190
SHM200	Reset	200



## THERMOSTATS, ADJUSTABLE AT SERIES

The six listed "AT" Series Adjustable Fan or Limit Thermostats cover almost 95% of all heater and dryer applications. The dial knob allows for any temperature setting within a 40° adjustable range. All thermostats are both U.L. Recognized and C.S.A. Certified. 1/4" quick-connect terminals are provided.

### "AT" SERIES ADJUSTABLE THERMOSTATS

PART NO.	RANGE °F	DIFF. °F	FUNCTION
AT012	135° to 175°	40	LIMIT
AT013	175° to 215°	40	CONTROLS
AT014	210° to 250°	40	SPST OPEN
AT015	250° to 290°	40	ON RISE
AT021	90° to 130°	40	FAN
AT022	140° to 180°	40	CONTROL
			SPST CLOSE
			ON RISE

### TYPICAL ELECTRICAL RATINGS

VAC	(Non-Inductive)		MOTOR RATING (Inductive)		PILOT DUTY
	RESISTIVE	FULL LOAD	LOCKED ROTOR	LOCKED ROTOR	
120	25.OA	14.OA	72.OA	72.OA	125 VA
240	25.OA	10.OA	60.OA	60.OA	125 VA

350°F Max Ambient Temperature





## THERMOSTATS, DEFROST/ICE MAKER ML & SL SERIES

An intermediately priced metal jacketed thermostat. The "ML" Series Thermostats are similar in design and construction as the "SL" Series except they are furnished with 24" long leads. They also meet all O.E.M. tolerance specifications. The all metal jacketed "SL" Series Thermostats are constructed of the highest quality components and meet or exceed all O.E.M. tolerance specifications. Furnished complete with 42" long leads.

### "ML" AND "SL" SERIES DEFROST/ICEMAKER THERMOSTATS

ML SERIES PART NO.	SL SERIES PART NO.	°DIFF.	OPEN°F	CLOSE°F
ML37		10	37	47
ML45	SL45	20	45	25
ML50	SL50	20	50	30
ML55	SL55	20	55	35
ML60	SL60	20	60	40
ML70	SL70	20	70	50
ML80	SL80	50	80	30
ML90	SL90	55	90	35

# 52959 - Surface Mount Bracket  
# 54477 - Tube Mount Bracket

**Electrical Specs**  
10 Amps @ 120VAC  
5 Amps @ 250VAC

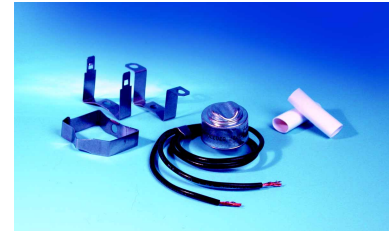
## SL SERIES THERMOSTATS, DEFROST ICEMAKER EXACT REPLACEMENT TYPE



**SL2205**  
OPEN 50°F, CLOSE 10°F  
FRANKLIN - F112205



**SL2690**  
OPEN 47°F, CLOSE 22°F  
GIBSON - G162690-1  
FRIGIDAIRE - 8000073, 8000085



**SL2691**  
FRIGIDAIRE - 5303917954



**SL2697**  
OPEN 70°F, CLOSE 12°F  
WHIRLPOOL - 482290



**SL3084**  
**SL6792**



**SL5022**  
OPEN 26°F, CLOSE 16°F  
G.E. - WR50X22 ICEMAKER

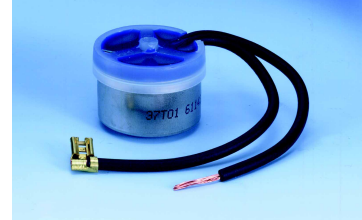




**SL5708**  
OPEN 75°F, CLOSE 40°F  
BOHN - 5708L



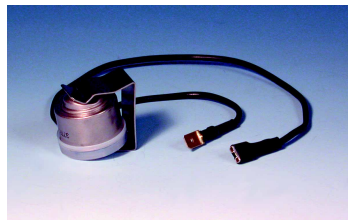
**SL5709**  
OPEN 55°F, CLOSE 35°F  
BOHN - 5709L



**SL5844**  
OPEN 48°F, CLOSE 18°F  
WHIRLPOOL, COLDSPOT  
265844 ICEMAKER



**SL8517**  
OPEN 80°F, CLOSE 15°F  
ADMIRAL - 52085-17



**SL8519**  
OPEN 80°F, CLOSE 31°F  
ADMIRAL - 52085-19



**SL8528**  
OPEN 47°F, CLOSE 15°F  
ADMIRAL - 52085-28  
- 69408966



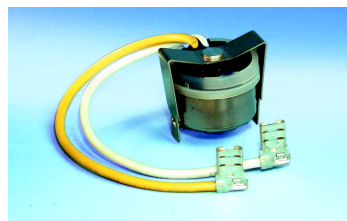
**SL8366**  
OPEN 60°F, CLOSE 20°F



**SL8509**  
OPEN 40°F, CLOSE 15°F



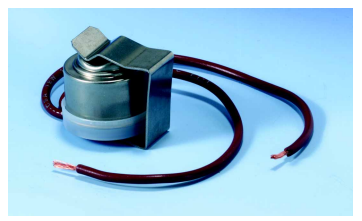
**SL8510**  
OPEN 40°F, CLOSE 10°F



**SL8513**  
OPEN 45°F, CLOSE 25°F



**SL8515**  
OPEN 55°F, CLOSE 15°F



Part No.	Open	Closed
SLT45	45°F	22°F
SLT50	50°F	10°F
SLT55	55°F	25°F
SLT60	60°F	30°F
SLT70	70°F	40°F
SLT80	80°F	15°F

**UL**  
UL RECOGNIZED

