

2014 SUPPLEMENT



Supco[®]

THE RIGHT CHOICE



Table of Contents

HVAC	Page
AC Hard Starts	4
Air Pressure Switch Kits	18
CAMSTAT® Controls	21
Capillary Tubing	10
Chart Recorders	12
Chemicals/ Refrigerants	28,29
Commercial Controls	5
Compressor Terminal Repair Kit	26
Condensate Pumps/Tablets/Heaters/Drains	8
Contactors	34
Data Loggers/ LOGiT Series	11
Drain Heaters	8
Driers	35
ECAP321	26
Fan Centers, Ducts & Heaters	26
Flashlights	27
Igniters	17,18
Instruments	14,15
LI'L Popper® (Circuit Breaker)	26
Moisture Indicator	35
Motor Protectors	4,5
Motor Run Capacitors	30,31
Motor Start Capacitors	32
Motors, Watt, Brackets	32,33,34
Pocket & Appliance Thermometers	16
Pressure Switches	10
Refrigeration Condensate Pans	6,7
Refrigeration Hard Starts	7
Relays	6
Sail Switch	25
Sequencers & Thermostats	22,23,24
SICCOM® Condensate Pumps	8
Sight Glass	35
Surge Protectors	4
Temperature Alarms	12
Thermometers	16
Thermostat Guards	20
Timers	5
Tools	26,27
Transformers	25
Troubleshooter	20
Tubing	18
Vacuum Sentry	13
Valves & Access Fittings	9
Vibration Absorbers	25
Wall Thermostats	19,20

APPLIANCE	Page
Appliance Book Store	37
Belts	44
Cold Controls	42
Compressors	40
Defrost Heaters	43
Defrost Timers	41, 42
Dishwasher Repair Parts	46
Dryer Repair Parts	46,47
Icemaker Replacement Kits	37
Icemaker Replacement Parts	38
Icemaker/Humidifier Installation Kits	38
Motors	36
Oven Range Igniters	44
Range Products	45
Refrigerator Door Gaskets	41
Refrigerator Relay & Overloads	36
Repair for LG® Parts	46
Surface Elements	45
Surge Arrestor	37
Thermostats	43
Washer Repair Parts	44
Water Filters	39,40

AC Hard Starts

Your Source For All Hard Starts



ULTRA Series

2-wire mechanical potential relay hard start

PART		
NO.	APPLICATION	REPLACES
MPR5	1 to 3 hp	Kickstart® TO-5
MPR1	3.5 to 5 hp	Kickstart® KS-1



SPPE 'E Class' SERIES

Electronic Potential Relay Technology

PART		APPLICATION
NO.		(hp)
SPP6E		1/2 – 3
SPP7E		1 – 4
SPP8E		1 and up



3 Series

3-wire mechanical potential relay hard start

PART		
NO.	APPLICATION	REPLACES
3W1	1 – 3 hp	CSRU1
3W2	3.5 – 4.5 hp	CSRU2
3W3	4 – 5 hp	CSRU3



SPP SUPER BOOST SERIES

PTC Technology

PART		INCREASE
NO.		IN TORQUE (%)
SPP5		300%
SPP6		500%
SPP7S		600%



Surge Protectors

SCM60 & SCM150 Surge Arrestors



PART NO.	MAXIMUM SURGE CURRENT
SCM60	60,000 Amps
SCM150	100,000 Amps



UL File #E175789
UL1449 3rd Edition
Listed Type 2 SPD

SYC2P27B

Low Voltage Circuit Surge Arrestors

Protection for low voltage control circuit



Motor Protectors

TPMPU

Universal 3-Phase Motor Protector

Economic motor protection w/full voltage range & adjustable imbalance

Protects Against:

- Phase Loss
- Improper Phase Sequence
- Phase Imbalance (4%-20% Adjustable)



TPMP2

Three Phase Motor Protector

Protects Against:

- Phase Loss
- Phase Imbalance (7% Fixed)



Motor Protectors



LINEBACKER® EAC8002- 3 Phase Motor Protector

- Short Cycle Protection
- Phase Loss / Reversal Protection
- Auto / Manual Reset
- Phase Unbalance Protection
- Under / Over Voltage Protection
- Adjustable Delay Make/Break Timers

PART NO.	CONTROL VOLTAGE	CONTROL RELAY RATINGS	WEIGHT (Lbs.)	A-1 PART NO.
EAC8002	18-288VAC	10A/230VAC	.91	F6872



LINEBACKER® EAC400- Single Phase Motor Protector

- Short Cycle Protection
- High/Low Voltage Protection
- Hard Wired into System
- Indicator Light
- Adjustable Delay

PART NO.	MONITORED VOLTAGE	CONTROL VOLTAGE	CIRCUIT LOAD CAPACITY N.O.	WEIGHT (Lbs.)	A-1 PART NO.
EAC400	95 to 270VAC	Universal	1A run 20A inrush	.469	F7744

Commercial Controls



ST100 Series General Purpose Timer Switches

PART NO.	VOLTS	SWITCH	CROSS REFERENCE
ST101	120	SPST	Paragon® 4001-00, Intermatic® T101
ST102	240	SPST	Paragon® 4002-71, Intermatic® T102
ST103	120	DPST	Paragon® 4003-00, Intermatic® T103
ST104	240	DPST	Paragon® 4004-71, Intermatic® T104

S8000 Series Commercial Defrost Controls



PART NO.	PARAGON® MODEL NO.
S804100	8041-00
S804120	8041-20
S804500	8045-00
S804520	8045-20
S814100	8141-00
S814120	8141-20
S814500	8145-00
S814520	8145-20
S814521	8145-21



M814520 EXACT FIT Commercial Defrost Mechanism

Direct replacement for
Paragon® 8145-20

Sold in convenient
6-pack counter display!



Timers

EDT Series - Universal Electronic Adjustable Defrost Timers



EDT10

PART NO.	HP	AMP	CONTACTS
EDT10	1/3	10	1
EDT11	3/4	20	1

Time Delays - Delay on Make or Delay on Break



TD69



PART NO.	DESCRIPTION
TD69	DOM, w/anticipator wire
TD73	DOB, w/anticipator wire

Relays



APR5
Adjustable
Potential Relay



SUPR
Universal
Potential Relay



SEPR60
Universal 2 - Wire
Potential Relay



90XX Series
Potential Relays

PART NO.	CONTINUOUS		PICK-UP		DROP MAX.
	COIL VOLTAGE		MIN.	MAX.	
9063	170		139	153	55
9064	395		260	275	120
9065	332		168	182	90
9066	395		215	225	120
9067	420		295	315	125

PART NO.	CONTINUOUS		PICK-UP		DROP MAX.
	COIL VOLTAGE		MIN.	MAX.	
9068	502		325	345	135
9069	336		180	195	105
9070	332		285	305	85
9071	420		212	232	121



903X Series
General Purpose Switching Relays

- Double pole – double throw (DPDT)

PART NO.	COIL VOLTAGE
90340	24
90341	120
90342	208/240



90290

Fan Relays

PART NO.	DESCRIPTION	AMPS	COIL VOLTAGE
90290	SPST	4	24V
90291	SPST	4	120V
90292	SPST	4	240V
90293	SPDT	1	24V
90294	SPDT	1	120V
90295	SPDT	1	240V

PART NO.	DESCRIPTION	AMPS	COIL VOLTAGE
90370	SPDT	12	24V
90372	SPDT	12	120V
90374	SPDT	12	240V
90380	NO/NC	13	24V
90382	NO/NC	13	120V
90384	NO/NC	13	240V

Refrigeration Condensate Pans

Designed for durability and long life, these high value pans are unmatched in quality.



PART NO.	CAPACITY	DISSIPATION RATE
CP801	1 3/4 QT	3 Gallon
CP802	2 1/2 QT	6 Gallon
CP802-240	2 1/2 QT	6 Gallon
CP804	4 1/2 QT	6 Gallon
CP804-240	4 1/2 QT	6 Gallon
CP804HD	7 1/2 QT	6 Gallon
CP804HD-240	7 1/2 QT	6 Gallon
CP807	7 1/2 QT	10 Gallon
CP807-240	7 1/2 QT	10 Gallon

PART NO.	CAPACITY	DISSIPATION RATE PER DAY
CP808	15 QT	8 Gallon
CP815	15 QT	12 Gallon
CP815-240	15 QT	12 Gallon
CP816	7 QT	4.5 Gallon
CP817	7 QT	8 Gallon
CP818	7 QT	8 Gallon
CP819	7 QT	12 Gallon
CP820	7 QT	12 Gallon
CP821	15 QT	12 Gallon

Refrigeration Condensate Pans

Cast Aluminum Condensate Drains complete with long life heating element and mounting legs.



70

PART NO.	CAPACITY	VOLTS	WATTS	EVAPORATOR	
				RATE	SIZE
70*	50 oz	117	300	4-5 oz/hr	12 1/4" x 4 3/4" x 3"
75	75 oz	120	320	14 oz/hr	10" x 9" x 2 3/4"
30-OS	38 oz	120	160	8 oz/hr	10" x 4" x 2 7/8"

* Indicates NSF® Approved



LD10
Line Drive
Blow Out Valve



WA100
Condensate Water Alarm w/
Remote Sensor



WG1 Water Guard
Economical Water Alarm

Refrigeration Hard Starts

URCO 3'N 1 Series is pre-wired to work in systems with or without a Run Capacitor

Our NEW 4'N 1 URCO Series offers the most complete solution!



PART NO.	HP Rating
URCO810	1/12 - 1/5 hp
URCO410	1/4 - 1/3 hp
URCO210	1/3 - 1/2 hp
URO81	1/12 - 1/5 hp
URO41	1/4 - 1/3 hp



PART NO.	CAPACITOR	HP RATING
URCO810RC	12.5 µF Run Capacitor	1/12 - 1/5 hp
URCO410RC	15 µF Run Capacitor	1/4 - 1/3 hp
URCO210RC	20 µF Run Capacitor	1/3 - 1/2 hp

RCO 3'N 1 Series Refrigeration Hard Starts...For Refrigeration Systems without a Run Capacitor

RO & PRO Series Relay & Overload Combinations



PART NO.	HP RATING
RCO810	1/12 - 1/5 hp
RCO410	1/4 - 1/3 hp
RCO210	1/3 - 1/2 hp
SS410	1/4 - 1/3 hp



PART NO.	MOUNTING	HP RATING
R041	Quick Connect	1/4-1/3
R081	Quick Connect	1/12-1/5
PRO41	Push-On	1/4-1/3
PRO81	Push-On	1/12-1/5



MINI-SPLIT CONDENSATE PUMPS



DE05LUA720



GC1KFX2010



Flowatch Design

Features / Benefits

- Removes condensate for systems up to 42,000 BTUs
- 4 GPH
- 24 foot maximum lift
- Vertical Suction: 6 foot maximum
- Noise Level: <21dB @ 3.3' distance
- Optional Mounting Kit: # GC1KFX2010
- 2-year warranty

FLOWATCH® Design

Mini-Split Condensate Pump with plastic duct & installation kit

- Includes mini FLOWATCH® 2 Pump
- Includes over 2 ½ feet of plastic duct
- Includes all mounting hardware
- Pre-mounted and wired in plastic duct
- 2 year warranty

SICCOM® Condensate Pump Line Up

PART NO.	115V	230V	N.O. SAFETY SWITCH	N.O. / N.C. SAFETY SWITCH	PUMP ONLY	PUMP W/ PLASTIC DUCT
2 Wire						
DE05LUA520	X		X		X	
DE05LUA720		X	X		X	
DE05LUA660	X		X			X
3-Wire						
DE05LUB100	X			X	X	
DE05LUB110		X		X	X	
DE05LUB120	X			X		X
DE05LUB130		X		X		

Condensate Pump/ Tablets/ Heater/ Drain



CP1A Series

This condensate pump is suitable for use with condensate from high efficiency condensing furnaces and boilers which produce acidic condensate. Shut-down and optional alarm as needed.



PART NO.	VOLTS	LIFT IN FEET	GPH
CP1A	115	22	10
CP1A-230V	230	22	10

SO100 / ST200

Condensate Pan Conditioning Tablets

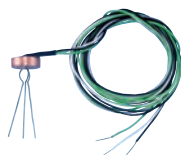


Slimeout®

PART NO.	SO100	ST200
Description	Slime Out	Slime Tab
Tablets/Jar	100	200
Tablet Size	35 grams	20 grams
Initial Application	2 tabs/3 tons	3 tabs/3 tons
Maintenance	2 per month	3 per month

SH250

Universal Drain Heater



- 120 Volts
- 3 Watts

DP34 Drain Plus Condensate Drain



- Eliminates "dry-trap" syndrome
- Fits 3/4" drain lines

Valves and Access Fittings



SUPCO® BULLET® Valves



SUPCO® BULLET® Caps



PART NO.	DESCRIPTIONS
BPV21	Bullet Piercing Valve
BPV31	Bullet Piercing Valve
BPV31D	Bullet Piercing Valve
STV2	Self Tapping Valve

- 1/4" refrigerant cap
- Crush-proof steel construction
- Unlock with standard valve tool

PART NO.	DESCRIPTION
SF9920	Bullet Caps (2 Pack)
SF2290K	Bullet Caps (10 Pack) with Tool
SF2290BX	Bullet Caps (50 in Box)
SF2290T	Bullet Cap Tool



AP SERIES Clamp on Line Tap Valves



- T Handle for secure grip
- Two different sizes
- Easily controls refrigerant flow

A-1		
PART NO.	PART NO.	TUBE SIZE OD
AP1	F6102	3/16", 1/4", 5/16", 3/8"
AP2	F6103	3/8", 1/2", 5/8"



Adjustable Line Tap Valves

OLD PART NO.	NEW PART NO.	TUBE SIZE OD
SA1	A1	1/4", 5/16" 3/8"
SA2	A2	1/2", 5/8"



ACCESS CONTROL VALVE CA-1

- Purging port for air removal & safety
- Steel construction
- For use with charging hose

A-1		
PART NO.	PART NO.	DESCRIPTION
CA-1	F6156	For A-1, A-2, A-3 & all access valves

LINE & SERVICE VALVES

PART NO.	SPECIFICATIONS
SF8403	Service Valve; 3/16" Tube, 1/4" Step
SF8404	Service Valve, 1/4" Tube
SF8405	Service Valve, 5/16" Tube
SF8406	Service Valve, 3/8" Tube
SF8408	Service Valve; 1/8" Tube, 3/16", 1/4", 5/16" Step
SF8414	Line Valve, Flared, 1/4" ID, 5/16" OD
SF8438	Line Valve, Flared, 3/8" ID, 7/16" OD
SF8458	Line Valve, Flared, 5/8" ID, 11/16" OD

VALVE TOOLS

PART NO.	SPECIFICATIONS
SF3813	Core Removal Tool w/ Container
SF3900	Core Removal Tool
SF3910	Core Removal Tool w/ Side Port
SF4311	"Fast Tap" Tube Piercing Pliers

VALVE REPLACEMENT

PART NO.	SPECIFICATIONS
SF2235	Hex brass cap w/ seal
SF2245	Round brass cap w/ seal
SF2250	Round brass cap, seal and wrench
SF4450	Valve core w/ seal



SF3813

Pressure Switches



Low Pressure Open On Pressure Drop

PART	OPEN PSI	CLOSE PSI
SLP0520	5	20
SLP0530	5	30
SLP1025	10	25
SLP1032	10	32
SLP1535	15	35
SLP2045	20	45
SLP2550	25	50
SLP2565	25	65

Low Pressure Open On Pressure Drop

PART NO.	OPEN PSI (CUT-OUT)	CLOSE PSI (CUT-IN)
SLP2580	25	80
SLP3560	35	60
SLP4560	45	60
SLP4080	40	80
SLP5090	50	90
SLP75100	75	100
SLP90120	90	120

High Pressure Open On Pressure Rise

PART	OPEN PSI	CLOSE PSI
SHP200150	200	150
SHP250150	250	150
SHP250180	250	180
SHP275195	275	195
SHP300200	300	200
SHP325225	325	225
SHP325230	325	230
SHP350250	350	250
SHP375265	375	265
SHP400200	400	200

High Pressure Open On Pressure Rise

PART NO.	OPEN PSI (CUT-OUT)	CLOSE PSI (CUT-IN)
SHP400280	400	280
SHP400300	400	300
SHP425300	425	300
SHP425325	425	325
SHP450250	450	250
SHP480380	480	380
SHP550450	550	450
SHP600475	600	475
SHP610420	610	420
SHP665565	665	565

Manual High Pressure Open On Pressure Rise

PART NO.	OPEN PSI (CUT-OUT)	CLOSE PSI (CUT-IN)
SMR375	375	Manual
SMR410	410	Manual
SMR440	440	Manual
SMR575	575	Manual
SMR610	610	Manual
SMR630	630	Manual

Fan Controls

PART NO.	OPEN PSI (CUT-OUT)	CLOSE PSI (CUT-IN)
SFC75120	75	120
SFC110170	110	170
SFC125265	125	265
SFC210275	210	275
SFC150225	150	225

Fan Controls

PART NO.	OPEN PSI (CUT-OUT)	CLOSE PSI (CUT-IN)
SFC170250	170	250
SFC200240	200	240
SFC200365	200	365
SFC300400	300	400

Capillary Tubing

Send email to info@supco.com to request new Capillary Chart.



Standard Service Packs

OLD NO.*	NEW PART NO.	LENGTH	DESCRIPTION
	BC26X16	16 feet	.026 ID X .071 OD
BC5	BC28X10	10 feet	.028 ID X .071 OD
BC1	BC31X10	10 feet	.031 ID X .081 OD
	BC36X12	12 feet	.036 ID X .086 OD
BC2	BC40X12	12 feet	.040 ID X .093 OD
	BC42X12	12 feet	.042 ID X .093 OD
	BC44X12	12 feet	.044 ID X .093 OD
	BC46X12	12 feet	.046 ID X .093 OD
	BC49X11	11 feet	.049 ID X .093 OD
	BC50X11	11 feet	.050 ID X .093 OD
BC3	BC52X12	12 feet	.052 ID X .093 OD
	BC54X11	11 feet	.054 ID X .106 OD
	BC55X11	11 feet	.055 ID X .112 OD
	BC59X10	10 feet	.059 ID X .112 OD
BC4	BC64X12	12 feet	.064 ID X .125 OD
	BC70X12	12 feet	.070 ID X .125 OD
	BC75X9	9 feet	.075 ID X .125 OD
	BC80X10	10 feet	.080 ID X .145 OD
	BC85X9	9 feet	.085 ID X .145 OD
	BC90X7	7 feet	.090 ID X .145 OD

100 Foot Bulk Packs

OLD PART NO.	NEW PART NO.	LENGTH	DESCRIPTION
	BC26X100	100 feet	.026 ID X .071 OD
BC5-100	BC28X100	100 feet	.028 ID X .071 OD
BC1-100	BC31X100	100 feet	.031 ID X .081 OD
	BC36X100	100 feet	.036 ID X .086 OD
BC2-100	BC40X100	100 feet	.040 ID X .093 OD
	BC42X100	100 feet	.042 ID X .093 OD
	BC44X100	100 feet	.044 ID X .093 OD
	BC46X100	100 feet	.046 ID X .093 OD
	BC49X100	100 feet	.049 ID X .093 OD
	BC50X100	100 feet	.050 ID X .093 OD
BC3-100	BC52X100	100 feet	.052 ID X .093 OD
	BC54X100	100 feet	.054 ID X .106 OD
	BC55X100	100 feet	.055 ID X .112 OD
	BC59X100	100 feet	.059 ID X .112 OD
BC4-100	BC64X100	100 feet	.064 ID X .125 OD
	BC70X100	100 feet	.070 ID X .125 OD
	BC75X100	100 feet	.075 ID X .125 OD
	BC80X100	100 feet	.080 ID X .145 OD
	BC85X100	100 feet	.085 ID X .145 OD
	BC90X100	100 feet	.090 ID X .145 OD

* BC1 through BC5 are all still available.

Data Loggers

SL Series Miniature Data Loggers - Monitor Temperature & Humidity Trends

- Up to 43,000 Data Points
- Software and USB Cable Included
- Hi / Low Limit Alarms
- Interval 1 sec to 18 hrs.

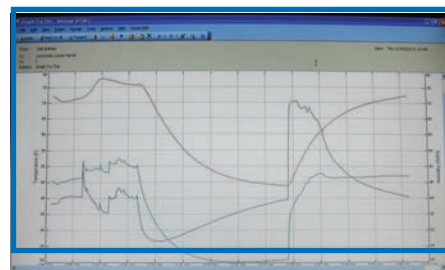


SL300TH

- Temperature and Humidity

SL300T

- Temperature Only



SL500T

SL500 Series



Models

- LCD Real Time Graphical & Text Display
- Visual Alarms
- Software & USB Included
- Software is not compatible with any other SUPCO® data logger software

PART NO.	DESCRIPTION
SL500T	View Temperature Data Logger with Display
SL500TH	View Temperature & Humidity Data Logger with Display
SL500XT	View External Temperature Data Logger with Display
SL500TC	View Thermocouple Temperature Data Logger with Display

DV Series Data View Data Loggers



DVTH

Data View Data Logger

- Graphical & Text Display
- Audible & Visual Alarms
- Software & USB Cable Included
- Temperature Range: 15°F to 150°F
- Humidity Range: 0% RH to 90% RH (non-condensing)



DVT4

4 Temperature Channels

- Graphical & Text Display
- Audible & Visual Alarms
- Software & USB Cable included
- 1 internal, 3 external probes
- Internal Probe: 15°F to 150°F
- External Probe: -40°F to 160°F



DVCV Current & Voltage

- Graphical & Text Display
- Audible & Visual Alarms
- Software & USB Cable Included
- Voltage Range: 600VAC
- Current Range: 300Amps

LOGIT Series



LTH



LPT

PART NO.	SPECIFICATIONS
LTH	Temperature & Humidity Logger
LTT	Dual Temperature Logger
LPT1000	Pressure & Temperature Logger (0-1000 PSI)
LCV	Current & Voltage Logger
LT2	Temperature Logger (Internal & External)
LTC	Thermocouple Temperature Logger
LPT	Pressure & Temperature Logger
LLSU	Interface Kit for USB Connection



LCV



LLSU



Chart Recorders



CR87B Temperature Recorder

- Range -40°F to 120°F
- 3 Temperature Ranges
- 4 Chart Speed Selections
- 12 Speed + Temp. Ranges combined
- Bright LED Display



CRTH2 Temperature/ Humidity Recorder

- Temp. Range -40°F to 130°F
- Humidity Range 0% to 90%
- 3 Temperature Ranges
- Chart Speeds from 1.5 hrs. to 31 days
- 24 Speed & Temp. Ranges combined
- 2 line LCD Display



VLT4115 4 Channel Recorder, Temperature Logger, Printer & Alarm

- Large LED Display
- Internal/External Alarm
- One Year Data Logging Capability
- Data Transfers to Computer

Temperature Alarms



TA33 Digital Display Temperature Alarm with Battery Back Up

- Temperature Range; -40°F to 160°F
- Audible and Visual Alarm
- Remote Alarm Contacts
- AC Adapter included



TA22 Digital Display Temperature Alarm

- Temperature Range; -40°F to 160°F
- Audible and Visual Alarm
- Remote Alarm Contacts
- AC Adapter included



THA2 Temperature & Humidity Alarm

- Temp. Range -40°F to 140°F
- Humidity Range 0% to 90%
- Displays Temp, Humidity & Dew Point
- Alarm Limits
- Relay Contacts
- Logs up to 170 Days
- Software Included



ADTA Auto Dialer For Temperature Alarms

- Calls up to 4 telephone numbers
- 16 second message
- LCD display
- For use with THA2, TA6, TA2, TA22, TA44



TA6 Dual Set Point, Single Zone Temperature Alarm

- Temp. Range -10°F to 80°F
- Alarm Limits for Rise & Fall
- Audible & Visual Alarms
- Relay Contacts



TA7 Battery Operated, Single Zone Temperature Alarm

- Temp. Range -10°F to 80°F
- Alarm Limits for Rise Only
- Audible & Visual Alarms
- No Delay or 1 Hour Delay



TA2 Single Zone Temperature Alarm

- Temp. Range -10°F to 80°F
- Alarm Limits for Rise OR Fall
- Audible & Visual Alarms
- No Delay or 1 Hour Delay
- Relay Contacts



TA44 Single Set Point Temperature Alarm With Digital Display & Remote Wireless Alarm

- Temperature Range; -40°F to 160°F
- Audible and Visual Alarm
- Remote Alarm Contacts
- AC Adapter included



TA44 INCLUDES	
TA44T	Transmitter
R10	Receiver

TA44T

R10

Vacuum Sentry

SUPCO is your VACUUM GAUGE SOURCE since 1990



1990
VG60



1995
VG62



2000
VG64



2009
VG64S



2013
VG640D

— VACUUM SENTRY— NOW Choose Single Port or NEW DUAL Port —

VG640/ VG640D Features / Benefits

- Multi-point sensor technology
- Unmatched resolution (0.5 Micron)
- Never replace, easy-to-clean LIFETIME sensor
- Large, backlit display
- High & low, audible and visual threshold alarms
- Built-in hanger
- Includes 1/4" male adapter (VG640)
- 2 year warranty



VG640



VG640D

PART NO.	DESCRIPTION
VG640	Vacuum Sentry with Local Alarms
VG640D	Dual Port Vacuum Sentry with Local Alarms



VG60

Electronic Vacuum Gauge



VG64

Digital Vacuum Gauge



VG64S

Single Port Vacuum Gauge

Accessories



R100

Remote Receiver

For use with VG640 gauges

- Audible, visible and vibrating alarm
- Distance up to 400 ft.
- Integrated belt clip

Kits



VG640T

Vacuum Sentry Kit

- User selectable low and high vacuum alarms with remote wireless receiver (R100 included)
- 1/2 second response time



EM Series

Enviro Meters measure critical HVAC/R parameters to maximize productivity and performance

EM5 Measures 5 Environmental Parameters

Environmental Meter

- Air Velocity / Air Volume
- Temperature
- Humidity
- Sound
- Light
- Min / Max / Avg / Diff
- Data Hold
- Backlit LCD
- Auto Power Off
- Carrying Case & Tripod included



EM10

Temperature & Humidity Meter

- Measures Temperature, Humidity & Dew Point
- Temperature Range: 14°F to 122°F
- Humidity Range: 0% to 99.9% RH



EM20

Thermo-Anemometer

- Measures fpm, m/s, mph, km/h, kts, Beaufort Scale
- Measures °F / °C
- Velocity Range: 80 fpm to 4000 fpm
- Temperature Range: 14°F to 122°F



EM30

Tachometer

- Measures rpm & rps
- Range: 100 rpm to 30,000 rpm



EM60

Dual Differential Thermometer

- Dual Thermocouple (J, K) inputs
- Temperature Range (K): -328°F to 2372°F
- Measures T1, T2 & T1-T2
- Includes two (2) K-type thermocouples



EM80

Sound Level Meters

- Range: 30 dB to 120 dB



EM90

Dual Thermometer

- IR Range: -58°F to 518°F
- Thermocouple Range (K): -328°F to 2372°F
- Includes one (1) K-type thermocouple



DDM55

Dual Digital Manometer

- Dual Input
- Range: +/-55" H₂O
- Resolution to 0.01"
- Hoses, fitting and case included
- Backlit LCD



CO1000

Carbon Monoxide Meter

- Up to 1000 ppm
- 1 ppm Resolution
- Audible Alarm
- Max and Data Hold
- Backlit LCD
- Boot and carrying case included



VDL1000

- Detects 90 -1000 VAC
- Beeps & flashes RED when voltage detected
- Integrated LED light
- 2 AAA batteries included



DAVM+

Digital Airflow / Volume Meter

- Measures Feet per Minute (FPM) and Cubic Feet per Minute (CFM)
- Measures Temperature and Humidity
- Measures Light Levels (LUX)
- Multi-Channel Display
- Data Hold
- Carrying Case Included



DSP1000

Digital Psychrometer

- Temperature / Humidity
- Wet Bulb / Dew Point
- Dual Display
- Max and Data Hold



DHS55

Digital Hand Held Scale

- 55 lbs. Maximum
- Auto Shut Off

Instruments



Clamps on 3/8" to 1 - 1/8" tube

TPC8000

Temperature Pressure Clamp

- 3 Tools in 1
- Pipe Temperature
- Temperature & Relative Pressure
- PT Chart - 65 Refrigerants
- Auto shut-off
- Backlit display

IAQ50

Wall Mounted IAQ Monitor ...for continuous monitoring



IAQ50 / 55 Ranges:

CO₂: 0 to 9999 ppm
Temperature:
14°F to 140°F
Humidity:
0 to 99%
(non-condensing)

IAQ55

Handheld IAQ Monitor...for pinpointing problem areas



MFD10

Capacitor Tester

- New, rugged case
- Rubber grips for easy handling
- Range: 0.001 μ F to 9999 μ F
- Auto-ranging
- Now with magnetic leads
- Includes alligator clips
- Longer leads - now 12"
- Sliding door to easily store test leads & clips
- Includes carrying case



M500

Electronic Insulation Resistance Tester

- Check compressor windings before they fail
- Range: 20 - 1,000 Megohms



PCS220

Programmable Refrigerant Charging Scale

- Solenoid activated for real-time charging
- Range: 0 - 220 lbs
- Best Resolution: 0.005 lbs / 0.1 oz
- User Programmable Alarms
- Built-in memory



RCS220

Refrigerant Charging Scale

- Fast accurate measurements
- Range: 0-220 lbs.
- Best Resolution: 0.01 lbs.
- Large LCD display
- Built-in memory



HLD200

Refrigerant Leak Detector

- Pump driven for fast reaction (<1 sec)
- Sensitivity: 0.1 oz / yr
- Audible tick and LED indicators
- 5 sensitivity levels



ST1236-31

Sure Temp Thermometer

- Assures accurate reading
- Inexpensive solution
- NSF approved
- Range: -40°F to 180°F
- Includes mounting hardware
- Dimensions: 1-5/12" X 6-7/8"



Thermometers

Remote Dial Vapor Tension Thermometers



S6020HL

Features

- Stainless steel housing
- Analog dual scale dial °F or °C
- 48" capillary

PART NO.	MOUNTING	TEMPERATURE RANGE	DIAL SIZE
S6020BB	Surface back flange/ Back connection	-40°F to 60°F (-40°C to 16°C)	2"
S6020FB	Surface front flange/ Back connection	-40°F to 60°F (-40°C to 16°C)	2"
S6025FB	Surface front flange/ Bottom connection	-40°F to 60°F (-40°C to 16°C)	2.5"
S6020HL	Surface front flange/ Bottom connection	-40°F to 60°F (-40°C to 16°C)	2"
S6025HL	Surface front flange/ Back connection	-40°F to 60°F (-40°C to 16°C)	2.5"



SSDF20



Solar Powered LCD Thermometer

Features

- Stainless steel housing
- Mounting: Surface front flange/ back connection
- Easy to read LCD display
- Range: -60°F to 160°F (-51°C to 71°C)

THP2

Temperature/Humidity Pen

- -4°F to 122°F
- Humidity Range
10% to 90%



PIT6L

Dual Hand Held Thermometer

- 6:1 Optical Ratio
- IR Range: -4°F to 518°F
- Ambient Range: 32°F to 122°F



LIT6P

Dual Thermometer

- 6:1 Optical Ratio
- IR Range: -4°F to 518°F
- Probe Sensor Range:
-58°F to 518°F



LIT11TC

Laser Infrared Thermometer

- 11:1 Optical Ratio
- -76°F to 932°F

Pocket & Appliance Thermometers



ST09



ST06



ST10

PART NO.	DESCRIPTION	TEMPERATURE RANGE
ST01	Dial Pocket Thermometer, 1" Dial	40° to 160°F
ST02	Dial Pocket Thermometer, 1" Dial	0° to 220°F
ST03	Refrigerator Thermometer	-20° to 80°F
ST04	Oven Thermometer	100° to 600°F
ST06	Refrigerator Thermometer	-40° to 80°F
ST08	Dial Pocket Thermometer, 1 5/8" Dial	-40° to 160°F
ST09	Digital Pocket Thermometer	-40° to 392°F
ST10	Digital Pocket Thermometer	-50 to 392°F

Direct Replacement Igniters

SKIT03033

Replaces Trane® KIT03033



SPLT3400

Replaces Lochinvar® PLT3400



S0230K00000S

Replaces Goodman® 0230K00000S



Flat Silicon Carbide Igniters

IG4000 Super Kit

5 Brackets & Hardware

Replaces:

41-402, 41-403, 41-404,
41-405, 41-407, 41-408,
41-409, 41-410,
41-412, 41-414, 41-1090,
41-238, 41-242



IG402K Kit

Replaces:

41-402, 41-408,
41-410, 41-411



IG403K Kit

Replaces:

41-403, 41-404,
41-407, 41-409



PART NO.	REPLACES
IG401	41-401
IG404	41-404
IG405	41-405
IG406	41-406
IG407	41-407
IG408	41-408

PART NO.	REPLACES
IG409	41-409
IG410	41-410
IG411	41-411
IG412	41-412
IG414	41-414
IG418	Goodman® B14010-18S

Silicon Nitride Igniters

Choose from three Universal Igniter Kits

SSN2000

- Economic Design
- Replaces over 100 OEM igniters
- >50,000 cycles
- 1 year warranty



SSN3000

- Robust Design
- Replaces over 150 OEM igniters
- >50,000 cycles
- 2 year warranty



SSN4000

- Miniature Design
- Replaces over 150 OEM igniters
- >200,000 cycles
- Replaces Honeywell® Glowfly® #Q3200U1004
- 3 year warranty

Or satisfy your direct needs

SSN24

- Replaces Honeywell® Q3400A1024
- Compatible with Honeywell® 1st and 2nd Generation Smart Valve
- Includes Igniter and Flame Rod



Round Silicon Carbide Igniters

SIG100 Series Exact Replacement Round Igniters

- Replaces Exact OEM Round Igniters



PART NO.
SIG100
SIG101
SIG102
SIG104
SIG106

PART NO.
SIG107
SIG108
SIG109



SIG1100 Universal Igniter Kit

- Replaces more than 170 Igniters

Air Pressure Switch Kits



Adjustable Air Pressure Sensing Switch Kits

Ideal for residential and light commercial furnace, electronic air cleaner and humidifier applications

- Adjustable Set Points
- Operating Temperature Range: -40°F to 190°F



PART NO.	PRESSURE RANGE (" W.C.)	REPLACES
RSS495011	0.25" to 1.0"	RSS-495-11
RSS498013	1.0" to 4.0"	RSS-498-13



AFS222121 Adjustable Air Pressure Sensing Switch

General purpose proving switch designed for HVAC and Energy Management applications.

- Senses positive, negative or differential air pressure
- Set Point Range: 0.05" to 12.0" W.C.
- SPDT Switch
- Replaces White Rodgers® 770-1



NS2000031 Universal Small Footprint Air Pressure Sensing Switch

Replaces hundreds of small footprint air switches!

- Includes springs and orifice restrictors
- Hardware kit included
- Set Point Range: 0.10" to 10" W.C.

Tubing



Silicone Rubber Tubing (RED)

- NSF 51 soft, red
- Temperature Range: -100°F to 500°F (-73°C to 260°C)
- 5 foot rolls

PART NO.	DIMENSIONS	WORKING PRESSURE	BURST PRESSURE
SSRT185	1/8" I.D. (5/16" O.D.)	25 psi	75 psi
SSRT3165	3/16" I.D. (5/16 O.D.)	20 psi	60 psi
SSRT145	1/4" I.D. (3/8" O.D.)	5 psi	15 psi



Neoprene Air Tubing (Black)

- Use with air pressure switches
- Temperature Range: 0°F to 160°F (-17°C to 71°C)
- Pressure Range: -20 to 20 in. W.C.

PART NO.	DIMENSIONS	LENGTH
SNAT3165	3/16" I.D.	5 ft.
SNAT316100	3/16" I.D.	100 ft.
SNAT185	3/16" I.D.	5 ft.

Wall Thermostats



WALL THERMOSTATS – High Quality...High Value

New Line of Thermostats.
Completes our offering and cements our position as a
FULL LINE THERMOSTAT COMPANY
Available in Three Different Series:

- Professional Series**
- Performance Series**
- Ultimate Series**



61100N

Non-Programmable Thermostat



- 1.5 Square Inch Display
- 1 Heat / 1 Cool Systems
- 24 VAC Gas, Oil or Electric Systems
- F° / C° switch
- Single Stage Heat Pump
- Hardwire or Battery Powered

61152P

5/2 Day Programmable Thermostat



- 1.5 Square Inch Display
- 1 Heat / 1 Cool Systems
- 24 VAC Gas, Oil or Electric Systems
- F° / C° switch
- Single Stage Heat Pump
- Hardwire or Battery Powered

62100N

Non-Programmable Thermostat



- 1.5 Square Inch Display
- Up to 2 Heat / 1 Cool
- 24 VAC Gas, Oil or Electric Systems
- F° / C° switch
- Single Stage Heat Pump
- Hardwire or Battery Powered

62152P

5/2 Day Programmable Thermostat



- 1.5 Square Inch Display
- Up to 2 Heat / 1 Cool
- 24 VAC Gas, Oil or Electric Systems
- F° / C° switch
- Hardwire or Battery Powered

71100N

Non-Programmable Thermostat



- 3 Square Inch Display
- 1 Heat / 1 Cool Systems
- 24 VAC Gas, Oil or Electric Systems
- Single Stage Heat Pump
- Hardwire or Battery Powered

71157P

5/2, 7 Day or Non-Programmable Thermostat



- 4 Square Inch Display
- 1 Heat / 1 Cool Systems
- 24 VAC Gas, Oil or Electric Systems
- Single Stage Heat Pump
- Hardwire or Battery Powered

73200N

Non-Programmable Thermostat



- 3 Square Inch Display
- Up to 3 Heat / 2 Cool Heat Pump Systems
- Up to 2 Heat / 2 Cool Conventional Systems
- 24 VAC Gas, Oil or Electric Systems
- Hardwire or Battery Powered

73257P

5/2, 7 Day or Non-Programmable Thermostat



- 4 Square Inch Display
- Up to 3 Heat / 2 Cool Heat Pump Systems
- Up to 2 Heat / 2 Cool Conventional Systems
- 24 VAC Gas, Oil or Electric Systems
- Hardwire or Battery Powered

84210T

5/2, 7 Day or Non-Programmable Thermostat



- 10 Square Inch Touchscreen Display
- Up to 4 Heat / 2 Cool Heat Pump Systems
- Up to 3 Heat / 2 Cool Conventional Systems
- 24 VAC Gas, Oil or Electric Systems
- Hardwire or Battery Powered

Wall Thermostat Accessories

6390

Indoor Remote Sensor



- Simple 2-Wire Installation
- Indoor Use Only
- Mounting Hardware Included
- Accuracy +/- 1°F (+/- .5°C)
- Compatible with CTC Thermostats: 71100N, 73200N, 71157P, 73257P, 84210T



6490

Outdoor Remote Sensor



- Simple 2-Wire Installation
- Outdoor Use Only
- Mounting Hardware Included
- Accuracy +/- 1°F (+/- .5°C)
- Compatible with CTC Thermostats: 71100N, 73200N, 71157P, 73257P, 84210T



Wall Thermostats



E3 Series Universal Thermostats



53100

Non-Programmable Thermostat



- 2 Heat / 2 Cool Heat Pump Systems
- System Powered with Battery Backup or Battery Powered

53200

5/1/1 Day Programmable Thermostat



- 2 Heat / 2 Cool Heat Pump Systems
- System Powered with Battery Backup or Battery Powered

53300

7 Day Thermostat



- 2 Heat / 2 Cool Heat Pump Systems
- System Powered with Battery Backup or Battery Powered



43054

Digital Thermostat

- Non-Programmable
- Filter Change Indicator
- Indiglo Backlight



43154

5/2 or 5/1/1 Day Programmable Thermostat

- Pre-Programmed
- 4 Periods Per Day
- Indiglo Backlight



43004A



43005A

43004A / 43005A

Digital Thermostat

- Heat / Cool
- Snap Action Switching
- Mercury Free

Thermostat Guards



BTG-UN



PART NO.	DESCRIPTION
BTG-K	Clear Plastic
BTG-EK	Clear Plastic
BTG-RK	Clear Plastic
BTG-UK2	Clear Plastic
BTG-UN	Clear Plastic
BTG-UM	Metal
BTG-UWM	Metal
BTG-54VL	Metal
BTG-54VLW	Metal

Troubleshooter



MAGJUMPER: Now in FIVE Colors!

- Powerful Magnets
- 20" Wire Length
- Max Voltage: 3 VAC/VDC
- Max Current: 5 Amps

MAG1YL

Yellow Magjumper



MAG1GR

Green Magjumper



MAG1RD

Red Magjumper



MAG1BL

Blue Magjumper



MAG1BK

Black Magjumper





S106 Series Time Delay Relays

- SPST or SPDT
- Delay on/ off timing

PART NO.	A-1®		TIME DELAY ON	TIME DELAY OFF
	PART NO.	SWITCH ACTION	(seconds)	(seconds)
S1061A4575C	FF582	SPST	30 to 50	60 to 90
S1061A5040C	FF583	SPST	45 to 55	30 to 50
S1061A40100C	FF584	SPST	35 to 45	80 to 110
S1061A5560C	FF585	SPST	50 to 60	45 to 75
S1061B6545C	FF586	SPDT	60 to 70	45 to 75



F47 & F214 Series Fan Controls

- Adjustable Temperature Dial

PART NO.	A-1®		WIDTH (inches)	LENGTH (inches)	FAN OFF TEMP.	FAN DIFFERENTIAL
	PART NO.	SWITCH ACTION			(°F)	(°F)
F473TD12025C	FF564	SPST	7/16"	3"	90 to 120	25 to 50
F477TD12025C	FF565	SPST	7/16"	7"	90 to 120	25 to 50
F21412A14025C	FF562	SPST	1-1/16"	3"	60 to 140	25 to 50
F21413A14025C	FF563	SPST	1-1/16"	7"	60 to 140	25 to 50



L59 Series Limit Controls

- SPDT Switch
- User Temperature Adjustment

PART NO.	A-1®		FAN OFF TEMP.	FIXED DIFFERENTIAL
	PART NO.	LENGTH (inches)		(°F)
L593BA	FF568	3"	120 to 250	30
L597BA	FF569	7"	120 to 250	30



FA47TS Series Fan Controls w/ Time Start Fan Control

- Built in "Heat Assist" Time Delay
- Adjustable Fan OFF Temperature

PART NO.	A-1®		FAN OFF TEMP. (°F)	FAN DIFFERENTIAL (°F)	TIME DELAY @
	PART NO.	LENGTH (inches)			24 VAC (sec.)
FA47TS3110	FF566	3"	80 to 110	60 (Fixed)	25 to 60
FA47TS7110	FF567	7"	80 to 110	60 (Fixed)	25 to 60



FAL Series Universal Fan and Limit Controls

- Adjustable fan "OFF" setting
- Adjustable fan differential setting
- Adjustable Limit Temperature

PART NO.	A-1®		FAN OFF TEMP. (°F)	FAN DIFFERENTIAL (°F)	LIMIT TEMP.	LIMIT DIFFERENTIAL
	PART NO.	LENGTH (inches)			(°F)	(°F)
FAL3C05TD120A	FF558	3"	90 to 120	25 to 50	150 to 250	30
FAL7C05TD120A	FF559	7"	90 to 120	25 to 50	150 to 250	30
FAL7C20BT120AB	FF594	7"	90 to 120	25 to 50	150 to 250	30



FALTS Series Fan and Limit Controls w/ Time Delay

- SPST Switch
- Adjustable Limit Temperature
- Pilot Duty: 40 VA @ 30 VAC & 120 VAC

PART NO.	A-1®		FAN OFF TEMP. (°F)	LIMIT TEMP.	LIMIT DIFFERENTIAL
	PART NO.	LENGTH (inches)		(°F)	(°F)
FALTS57C05T120A	FF560	7"	90 to 120	150 to 250	30
FALTS57C65T120A	FF561	7" w/ shield	90 to 120	150 to 250	30
FALTS57C13BT120A	FF591	7" SPDT	90 to 120	150 to 250	30



PR Series Pilot Re igniters

- Prevents Pilot Flames From Extinguishing

PART NO	A1 PART NO	DESCRIPTION
PR24120	FF541	24/120 VAC Hardware Kit , Spark cable
PR2436W	FF543	24 VAC Hardware Kit, Spark Cable, & PR-24 Module
PR2412036W	FF536	24/120 VAC Hardware Kit, Spark Cable & Module



BC7070 (F7070) Blower Control

- Increase Heating Efficiency



CIVA5 (FF534) Brown Out Delay Timer

- Short Cycle & Brown Out Protection



AFC01T110204 (FF535) Attic Fan Control

- Temperature: 60°F to 110°F

Sequencers & Thermostats

THERMODISC®



All Sequencers and Thermostats are:

- OEM Approved for Safety and Reliability



Get a Free Performance Pullover!

(A \$45 Value) w/ your min. order of 100 pcs of TOD items (excluding STC's). While supplies last. Limit 1 per order. Must specify shirt recipient name, address & shirt size: M,L,XL,XXL

SUPCO®	OEM
Q101	Goodman® B1290906 Lennox® 12F20 & 58C9701
Q102	York® 525-37322-000 Carrier® 40CF680020
Q103	ICP® / Carrier® HN67QC005 ICP® / Carrier® HQ1056789
Q104	Goodman® BT1256504 York® 525-37325-000 ICP® / Carrier® HN67QC006
Q105	York® 525-37327-000
Q106	Coleman® 3120A357 ICP® / Carrier® HN67QC008 ICP® / Carrier® P284-1313

SUPCO®	OEM
Q107	York® 525-37328-000
Q108	Goodman® B13707-38 ICP® / Carrier® HN67GJ002
Q109	Janitrol® BT1256500
Q110	Weatherking® 4223115608
Q111	Weatherking® 4223115606
Q112	Weatherking® 4223115607
Q113*	
Q114	Coleman® 7670-307, 7670-308 7670-130, 7670-913, 7670-101
Q115	Coleman® 3120A3771
Q116	Coleman® 3110-354

* 240V Heater



Gas Furnace Limits and Plenum Thermostats



THERMODISC®

PART NO	DESCRIPTION	OPEN (°F)	CLOSE (°F)	DIFFERENTIAL (°F)
SHL501	L170-40 SPST	170°	130°	40°
SHL502	L180-30 SPST	180°	150°	30°
SHL503	L190-40 SPST	190°	150°	40°
SHL504	L240-40 SPST	240°	200°	40°
SHL505	L140-40 SPST	140°	100°	40°
SHL506	L170-40 SPST	170°	130°	40°
SHL507	L140-30 SPST	140°	110°	30°
SHL508	L150-20 SPST	150°	130°	20°
SHL509	L240-30 SPST	240°	210°	30°
SHL510	L150-20 SPST	150°	130°	20°
* SHL511	L160-20 SPST	160°	140°	20°
SHL512	L170-20 SPST	170°	150°	20°
* SHL513	L170-40 SPST	170°	130°	40°

* Includes gasket

PART NO	DESCRIPTION	OPEN (°F)	CLOSE (°F)	DIFFERENTIAL (°F)
SHL514	L180-40 SPST	180°	140°	40°
SHL515	L200-40 SPST	200°	160°	40°
SHL516	L210-40 SPST	210°	170°	40°
* SHL517	L220-50 SPST	220°	170°	50°
SHL518	L250-40 SPST	250°	210°	40°
SHL519	L155-30 SPST	155°	125°	30°
SHL520	L100-20 SPST	100°	80°	20°
SHL521	L200-20 SPST	200°	180°	20°
SHL522	L160-20 SPST	160°	140°	20°
SHL523	L130-20 SPST	130°	110°	20°
SHL524	L170-20 SPST	170°	150°	20°
SHL525	L180-20 SPST	180°	160°	20°

* Includes gasket



Adjustable AT Series

- 40° adjustable range

Adjustable Thermostats

PART NO.	ADJUSTABLE RANGE	DIFF (°F)
AT012	135 - 175	20
AT013	175 - 215	40
AT014	210 - 250	40

Open on temperature rise. Standard mount.

Adjustable Airflow Thermostats

PART NO.	ADJUSTABLE RANGE	DIFF (°F)
AT021	90 - 130	20
AT022	140 - 180	20

Close on temperature rise. Standard mount.



SMRL130 Fire Stat

- Opens @ 130°F.



SFPC Freeze Protection Control

- Opens 35°F / Close 50°F.
- Fits 7/8" O.D. tubing

Thermostats

General Purpose L & LD Series



“L” Series , Single Pole - Single Throw



PART NO.	OPEN (°F)	CLOSE (°F)	DIFF (°F)
L120	120	110	10
L125	125	115	10
L130	130	115	15
L135	135	120	15
L140	140	120	20
L145	145	125	20
L150	150	130	20
L155	155	135	20
L160	160	140	20
L165	165	145	20
L170	170	150	20
L175	175	155	20
L180-20	180	160	20
L180-40	180	140	40
L190	190	150	40
L200	200	160	40
L205	205	165	40
L225	225	185	40
L240	240	200	40
L250	250	210	40
L260	260	220	40
L270	270	230	40
L290	290	250	40
L300	300	260	40
L320	320	280	40
L340	340	300	40

“LD” Series, Single Pole - Double Throw



PART NO.	OPEN (°F)	CLOSE (°F)	DIFF (°F)
LD120	120	105	15
LD130	130	115	15
LD135	135	120	15
LD140	140	120	20
LD145	145	125	20
LD155	155	135	20
LD170	170	150	20
LD200	200	160	40
LD225	225	185	40
LD240	240	200	40
LD270	270	230	40

Fan Control* - Close on Rise



PART NO.	CUT OUT (°F)	CUT IN (°F)	DIFF (°F)
SHF90	80	90	10
SHF110	90	110	20
SHF110DC	90	110	20
SHF120	110	120	10
SHF140	120	140	20
SHF250	220	250	30

*Adapter Flange Plate included with each thermostat.

Limit Control* - Open on Rise



PART NO.	CUT OUT (°F)	CUT IN (°F)	DIFF (°F)
SHL120	120	110	10
SHL140	140	100	40
SHL150	150	110	40
SHL160	160	120	40
SHL170	170	130	40
SHL180	180	140	40
SHL190	190	150	40
SHL200	200	160	40
SHL230	230	190	40
SHL250	250	210	40

*Adapter Flange Plate included with each thermostat.

Manual Rollouts - SPST Limit Thermostats



• 1/4" Vertical Terminals

PART NO.	CUT OUT (°F)	CUT IN
SRL130	130	Manual
SRL135	135	Manual
SRL220	220	Manual
SRL230	230	Manual
SRL240	240	Manual
SRL250	250	Manual
SRL260	260	Manual
SRL300	300	Manual
SRL350	350	Manual

Manual Reset Limit Control* - Open on Rise



PART NO.	OPEN (°F)	CLOSE
SHM125	125	Manual
SHM130	130	Manual
SHM160	160	Manual
SHM170	170	Manual
SHM180	180	Manual
SHM200	200	Manual
SHM290	290	Manual
SHM350	350	Manual

* Adapter Flange Plate included with each thermostat.

SRL Series X Ref

PART NO.	REPLACES OEM	OEM P/N
SRL130	Rheem®/Ruud®/Weatherking®	47-22453-01
SRL135	Rheem®/Ruud®/Weatherking®	47-22453-02
SRL220	Nordyne®	626354
SRL230	Nordyne®	626353
SRL240	Nordyne®	626355
SRL250	Nordyne®	626352
SRL260	Nordyne®	626350
SRL300	Nordyne®	626343
	Rheem®/Ruud®/Weatherking®	47-22861-02
SRL350	Goodman®	B13701-54

Thermostats



Small Flush Mount SPST Limit Thermostats (Flush Mount Automatic Rollout)

PART NO.	TERMINALS	CUT OUT (°F)	CUT IN (°F)
SLF130VA	Vertical 1/4"	130	115
SLF170VA	Vertical 1/4"	170	130
SLF194HB	Horizontal 3/16"	194	154
SLF210HA	Horizontal 1/4"	210	170
SLF230HA	Horizontal 1/4"	230	190
SLF250HA	Horizontal 1/4"	250	200
SLF330VA	Vertical 1/4"	330	280



Automatic Rollouts SPST Limit Thermostats

• 45°F Terminals 1/4"

PART NO.	CUT OUT (°F)	CUT IN (°F)
SLS120	120	105
SLS140	140	100
SLS150	150	110
SLS160	160	120
SLS170	170	130
SLS180	180	140
SLS200	200	160
SLS265	265	215
SLS275	275	225
SLS285	285	235
SLS295	295	245
SLS300	300	250



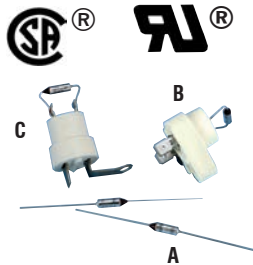
ML Series Defrost Thermostats

PART NO.	OPEN (°F)	CLOSE (°F)	MARS®	UNILINE®
ML45	45	20	33008	31-001 17001
ML50	50	20	33009	31-002 17003
ML55	55	20	33010	31-003 17005
ML60	60	20	33011	31-004 17007
ML70	70	20	33012	31-005 17009
ML80	80	50	33020	31-006 17011



HVAC Flush Mount Staging Thermostats

PART NO.	OPEN °F	CLOSE °F
FL50	50	35
FL60	60	45



Maximum Wattage
1800W @ 120V / 2400W
@ 240V

THERMODISC®

Thermal Cut Outs

PART NO.	OPEN TEMP. (°C)	OPEN TEMP. (°F)	STYLE
STC4228	109	228	A
STC4257	125	257	A
STC4283	139	283	A
STC4300	149	300	A
STC4333	167	333	A
STC4358	184	363	A
STC4438	226	438	A

Thermal Cut Outs

PART NO.	OPEN TEMP. (°C)	OPEN TEMP. (°F)	STYLE
STC4468	242	468	A
STC5257	125	257	B
STC5300	149	300	B
STC5333	167	333	B
STC5377	192	377	B
STC6257	125	257	C
STC6300	149	300	C
STC6333	167	333	C

Exact Replacement Commercial Refrigeration Defrost Thermostats



SL5708

- Surface Mount
- 2 wire heater limit 75°F - 40°F range
- SPST



SL5709

- Surface Mount
- 3 wire fan and defrost terminator 55°F - 35°F range
- SPDT



SL79002

- Tube Mount
- 3 wire defrost control 55°F - 30°F range
- SPDT



SL79005

- Surface Mount
- 3 wire defrost control 45°F - 30°F range

Vibration Absorbers



Features

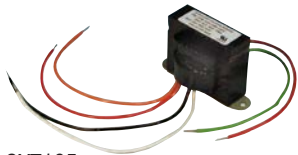
- Unique proven design for high pressure applications, rated for R410A
- Compatible with all refrigerants
- Working temperature: -40°F to 248°F (-40°C to 120°C)
- 100 % Helium and Hydrogen leak tested



PART NO.	ACTUAL OD OF COPPER TUBING (INCHES)	LENGTH (INCHES)	MAXIMUM WORKING PRESSURE (PSIG)	BURST PRESSURE (PSIG)	WEIGHT (LBS.)
VAS-014	1/4	7.95	650	3250	.26
VAS-038	3/8	8.46	650	3250	.26
VAS-012	1/2	8.86	650	3250	.31
VAS-058	5/8	9.72	650	3250	.44
VAS-034	3/4	10.47	650	3250	.63
VAS-078	7/8	11.85	650	3250	.67
VAS-118	1-1/8	12.95	650	3000	.95
VAS-138	1-3/8	15.43	550	2750	1.42
VAS-158	1-5/8	16.73	510	2550	1.97
VAS-218	2-1/8	20.47	400	2000	3.04

Transformers

Control Transformers



SXT105

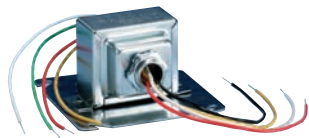
Foot Mount Transformers

PART NO.	PRIMARY V	SECONDARY V	OUTPUT VA	BREAKER/FUSE	MOUNT TYPE
SXT100R	120/208/240/480	24	100	Breaker	Foot
SXT101	120/208/240	2.5/12/24	40	Fuse	Foot
SXT105	120/208/240	24	40	No	Foot
SXT114	120/208/240	24	20	No	Foot
SXT115	120/208/240	24	40	No	Foot
SXT116	120	24	40	No	Foot
SXT79R	120/208/240/480	24	75	Breaker	Foot

* Includes Metal Shroud.



T45 Universal Transformer



- Primary 120/208/240V
- Secondary 25/8/12/16/24V
- 48 VA
- Plate, Foot or Knockout Mounting

PRICE \$ 8.50

Multi-Mount Transformers

PART NO.	PRIMARY V	SECONDARY V	OUTPUT VA	BREAKER/FUSE	MOUNT TYPE
SXT106	120/208/240	24	40	No	Multi
SXT111	120/208/240	2.5/12/24	40	Fuse	Multi
SXT113	208/240	24	40	No	Multi
SXT148	120/208/240	2.5/12/24	48	No	Multi
SXT150	120/208/240	24	50	Fuse	Multi

Sail Switch

ES1024C Sail Switch

PART NO.	CAN REPLACE
ES1024C	Magic Chef®, Magic-Pak® JMPO-102-4C & Comfort Pack® & 0336a-000



Fan Centers, Ducts & Heaters



FC4011 - 120 VAC Fan Center

- 24 VAC Secondary
- Rated for 40 VA
- Color coded wiring for easy installation



FC4031 - Universal Fan Center

- 120 / 208 / 240 VAC Primary
- 24 VAC Secondary
- Rated for 40 VA
- Color coded wiring for easy installation



DB6

DB Series - Duct Boosters

PART NO.	DESCRIPTION	VOLTS	CFM
DB6	6 inch Duct Booster	115V	240
DB8	8 inch Duct Booster	115V	420
DB10	10 inch Duct Booster	115V	850
DB12	12 inch Duct Booster	115V	1150

DH Series Duct Heater Coil Kits



PART NO.	C/W LENGTH	WATTAGE AT VOLTS	WATTAGE AT VOLTS
DH500	28"	5000@240	3750@208
DH500FC	12"	5000@240	3750@208

ECAP321

PVC Flue Pipe Cover



- Prevents Moisture, Dirt, Pests and Debris
- UV Resistant
- One Size Fits 1.5", 2" and 3" PVC Pipe
- OEM Approved Amana®, Bosch®, Goodman®



Tools

FSKEY Furnace Switch Key



Individual Key



Sold in jars of 200 keys



FP18 Filter Puller

Makes getting hard to reach filters EASY!

- 18" Extension
- Magnetic end
- Ergonomic handle



EL10 Easy Leveler Furnace Legs



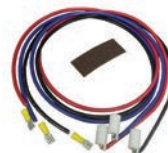
LIL POPPER®

Control Board Circuit Breaker



PART NO.	DESCRIPTION
POP3	3 Amp Breaker
POP5	5 Amp Breaker

Compressor Terminal Repair Kit



EC10 Easy Connect Compressor Terminal Repair Kit

Flashlights

FL6N1 - 6 In 1 Flashlight



PL6 - POCKETLIGHT



- 6 super bright LEDs
- Long life
- Pocket clip
- Sold in 6-pack display

UVL200 -

UV Leak Detection Light & Glasses

- 9 LED bulbs for high intensity
- Impact resistant glasses



FLT3M - Telescope LED Flashlight



Tools



PART NO.	A-1 PART NO.	FINS PER INCH	MIN/MULTI
FC0810	P-8	8 and 10	5
FC0915	P-9	9 and 15	5
FC1113	P-11	11 and 13	5
FC1214	P-12	12 and 14	5
FC1617	P-17	16 and 17	5
FC1820	P-18	18 and 20	5
FC2224	P-22	22 and 24	5



FCR6 Handy Ring Fin Comb Set



UFC1 Universal Fin Comb



SR6N1 6 In 1 Ratchet Screwdriver

(Sold in 12-pack display)



FBP100 Fan Blade Puller



PART NO.	KD® NO.	DESCRIPTION
445	KD445	KD® Internal Snap Ring Plier
446	KD446	KD® External Snap Ring Plier
145	KD145	KD® Hose Pinch Off Plier
3975	KD3975	KD® Corbin Style Hose Clamp Plier
447	KD447	Replacement Tips for KD445 & KD446



ESPR01

Anti-static wrist strap

Protects sensitive electronics during installation or repair

- Adjustable wrist band
- Dissipates static
- Electro- scattering time 0.1 sec.

Chemicals



**HS13001
THREADLOCKER®**

- Prevents fastener loosening
- Provides shock and vibration resistance
- Excellent performance with dissimilar metals



Leak Lock® & Leak Lock® GOLD with Teflon Joint Compound

- Brushable Paste
- Joins All Metal, Plastics & Other Material
- 12/Case

Regular

PART NO.	DESCRIPTION
HS10001	1-1/3 oz Tube
HS10004	4 oz Brush Top Plastic Jar
HS10016	16 oz Brush Top Plastic Jar

Teflon

PART NO.	DESCRIPTION
HS11001	1-1/3 oz Tube
HS11004	4 oz Brush Top Plastic Jar
HS11016	16 oz Brush Top Plastic Jar



**HS18004
Acid Neutralizer**

- Cures Acid Problems
- Compatible with ALL Lubricants
- 4 oz. Bottle
- 12/case



**Thawzone®
Liquid Dehydrant**

- Enhanced Moisture Control
- Compatible with all refrigerants
- Helps prevent the formation of acid
- Environmentally sound

PART NO.	SIZE	REG PKG
HS17001	1 oz	24/case
HS17004	4 oz	12/case



**HS16501
Oil Checker**

- Easy to use
- Each kit includes two complete tests.
- 12/case



**Trace® & Trace 2®
Leak Detector**

- Visible Red Color
- Fluorescent w / UV Light
- 12/Case

PART NO.	DESCRIPTION
HS20004	Trace For Mineral Oil Base
HS21004	Trace 2 For Polyester Base



HS50004- ICEMAX

- Inhibits formation of scale
- Prevents corrosion
- Environmentally Friendly



HS12001- Red Epoxy

- Tensile Strength: 6000 PSI
- Pressure Tested to 3000 PSI
- Simple, quick mixing & application
- Oil, gas, fuel & solvent resistant
- Use on all metals and rigid plastics



**HS22008
Low Temp Gas Leak Detector**

- Non-Toxic
- 8 oz. Bottle
- 12/case



**HS30004
Solderlene® Soldering Flux**

- Paste Type
- 4 oz. Jar
- 12/case



**HS16001
The Acid Test**

- Fast Accurate Results
- 4 Tests per Kit
- 12/case



**M098
Zoom Spout®
Oiler W/
Pullout Spout**

- 4 oz.
- 12/case



**M044
Rust Buster®
Cleaner Solvent W/
Pullout Spout**

- 4 oz.
- 12/case



**S8 SUPCO 88
Oil Additive**

- Prevents Excess Wear
- Compatible with all oils & refrigerants
- 8 oz.
- 12/Case

Chemicals

Highside Quick Service Kits NEW



HS18002 - Acid Neutralizer

- Cures acid problems
- 2 oz precharged injector
- 6/ case



HS17002 - Thawzone

- Moisture Control
- 2 oz precharged injector
- 6/ case



HS21002 - Trace2

- Visible Red
- Florescent UV
- 2 oz precharged injector



HS60002 - AC Leak Repair

- All-in-one
- Quick Sealing Small Leak Repair
- Lubricator
- Conditioner
- Seals multiple leaks
- UV dye to reveal larger leaks needing repair

Refills for Highside Quick Service Kits

- Includes 2 pre-charged injectors
- Hose is not included in the refill pack.



PART NO.	DESCRIPTION
HS18022	Acid Neutralizer
HS60022	AC Leak Repair
HS17022	Thawzone
HS21022	Trace2



HS31032 Heat Shield Gel NEW

- Protects heat-sensitive components
- Evaporates within 24-48 hours
- For use on all surfaces
- 12/case



HS32032- HVAC Instant Patch NEW

- Permanently seals breaks & holes in ALL HVAC materials
- Micro-bonding creates strong weld-like bond
- Less than 1 minute application, test & recharge in 20 minutes



HS32098 - HVAC Super Pro Solderless Bonding Kit NEW

- Lifetime bond
- Bonds copper, brass and aluminum
- Bonds dissimilar metals
- Fast, easy & strong
- Holds bond up to 1200 psi
- Includes sanding cloth

Refrigerants

New, compact canister refrigerants for fast and accurate charging of smaller systems.



Technology & Quality
at your service!



R410A18 R410A- 1.8 lbs

- For charging small to medium A/C systems
- Perfect for mini-splits
- 1/4" SAE connection
- Use R410AG adapter / gauge



R134A20 R134A- 20.3 oz

- For charging appliances
- Perfect for small to medium refrigeration systems
- Use R134AG adapter / gauge



UV12 Universal UV Dye

- Convenient aerosol can
- 12 applications
- Compatible with all refrigerants
- Use UVCONN adapter



R410AG R410A Adapter & Gauge

- Re-useable
- 5/16" connection to system



R134AG R134A Adapter & Gauge

- Re-useable
- 1/4" connection to system



UVCONN UV Dye Connector

- Standard 1/4" connection

Run Capacitors

SINGLE - OVAL

370 VOLT

PART NO.	μF
CR2X370	2
CR3X370	3
CR4X370	4
CR5X370	5
CR6X370	6
CR7.5X370	7.5
CR10X370	10
CR12.5X370	12.5
CR15X370	15
CR17.5X370	17.5
CR20X370	20
CR25X370	25
CR30X370	30
CR35X370	35
CR40X370	40
CR45X370	45
CR55X370	55
CR50X370	50
CR60X370	60
CR65X370	65
CR70X370	70
CR80X370	80
CR100X370	100

440 VOLT

PART NO.	μF
CR2X440	2
CR2.5X440	2.5
CR3X440	3
CR4X440	4
CR5X440	5
CR6X440	6
CR7.5X440	7.5
CR10X440	10
CR12.5X440	12.5
CR15X440	15
CR17.5X440	17.5
CR20X440	20
CR25X440	25
CR30X440	30
CR35X440	35
CR40X440	40
CR45X440	45
CR50X440	50
CR55X440	55
CR60X440	60
CR65X440	65
CR70X440	70
CR75X440	75
CR80X440	80

480 VOLT

PART NO.	μF
CR25X480	25



SINGLE - ROUND

370 VOLT

PART NO.	μF
CR2X370R	2
CR3X370R	3
CR4X370R	4
CR5X370R	5
CR6X370R	6
CR7.5X370R	7.5
CR10X370R	10
CR12.5X370R	12.5
CR15X370R	15
CR16X370R	16
CR17.5X370R	17.5
CR20X370R	20
CR25X370R	25
CR30X370R	30
CR35X370R	35
CR40X370R	40
CR45X370R	45
CR50X370R	50
CR55X370R	55
CR60X370R	60
CR65X370R	65
CR70X370R	70
CR80X370R	80
CR100X370R	100

440 VOLT

PART NO.	μF
CR2X440R	2
CR3X440R	3
CR4X440R	4
CR5X440R	5
CR6X440R	6
CR7.5X440R	7.5
CR10X440R	10
CR12.5X440R	12.5
CR15X440R	15
CR17.5X440R	17.5
CR20X440R	20
CR25X440R	25
CR30X440R	30
CR35X440R	35
CR40X440R	40
CR45X440R	45
CR50X440R	50
CR55X440R	55
CR60X440R	60
CR70X440R	70
CR80X440R	80
CR90X440R	90

DUAL - OVAL

370 VOLT

PART NO.	μF
CD15+3X370	15+3
CD15+4X370	15+4
CD15+5X370	15+5
CD15+10X370	15+10
CD17.5+4X370	17.5+4
CD17.5+5X370	17.5+5
CD20+3X370	20+3
CD20+4X370	20+4
CD20+5X370	20+5
CD20+10X370	20+10
CD20+15X370	20+15
CD25+3X370	25+3
CD25+4X370	25+4
CD25+5X370	25+5
CD25+7.5X370	25+7.5
CD25+8X370	25+8
CD25+10X370	25+10

370 VOLT

PART NO.	μF
CD25+15X370	25+15
CD27+5.5X370	27.5+5
CD30+3X370	30+3
CD30+4X370	30+4
CD30+5X370	30+5
CD30+7.5X370	30+7.5
CD30+10X370	30+10
CD35+3X370	35+3
CD35+4X370	35+4
CD35+5X370	35+5
CD35+7.5X370	35+7.5
CD35+10X370	35+10
CD40+3X370	40+3
CD40+4X370	40+4
CD40+5X370	40+5
CD40+7.5X370	40+7.5
CD40+10X370	40+10

370 VOLT

PART NO.	μF
CD45+3X370	40+3
CD45+5X370	45+5
CD45+7.5X370	45+7.5
CD45+10X370	45+10
CD45+15X370	45+15
CD50+5X370	50+5
CD50+7.5X370	50+7.5
CD55+5X370	55+5
CD55+7.5X370	55+7.5
CD60+5X370	60+5
CD60+7.5X370	60+7.5
CD60+10X370	60+10
CD65+5X370	65+5
CD80+5X370	80+5
CD80+7.5X370	80+7.5

Run Capacitors

440 VOLT

PART NO.	μF
CD10+5X440	10+5
CD15+4X440	15+4
CD15+5X440	15+5
CD15+10X440	15+10
CD20+5X440	20+5
CD20+15X440	20+15
CD25+5X440	25+5
CD25+7.5X440	25+7.5
CD25+10X440	25+10
CD25+15X440	25+15
CD30+4X440	30+4
CD30+5X440	30+5
CD30+7.5X440	30+7.5
CD30+10X440	30+10
CD35+3X440	35+3
CD35+4X440	35+4
CD35+5X440	35+5
CD35+7.5X440	35+7.5
CD35+8.5X440	35+8.5
CD35+10X440	35+10
CD40+3X440	40+3
CD40+5X440	40+5
CD40+7.5X440	40+7.5
CD40+10X440	40+10
CD45+5X440	45+5
CD45+7.5X440	45+7.5
CD50+5X440	50+5
CD50+7.5X440	50+7.5
CD55+5X440	55+5
CD55+10X440	55+10
CD60+5X440	60+5
CD60+7.5X440	60+7.5
CD65+7.5X440	65+7.5
CD65+10X440	65+10
CD80+5X440	80+5
CD80+7.5X440	80+7.5

DUAL - ROUND

440 VOLT

PART NO.	μF
CD10+10X370R	10+10
CD15+3X370R	15+3
CD15+4X370R	15+4
CD15+5X370R	15+5
CD15+10X370R	15+10
CD17.5+4X370R	17.5+4
CD17.5+5X370R	17.5+5
CD20+4X370R	20+4
CD20+5X370R	20+5
CD20+7.5X370R	20+7.5
CD20+10X370R	20+10
CD20+15X370R	20+15
CD25+3X370R	25+3
CD25+4X370R	25+4

370 VOLT

PART NO.	μF
CD25+5X370R	25+5
CD25+7.5X370R	25+7.5
CD25+10X370R	25+10
CD30+3X370R	30+3
CD30+4X370R	30+4
CD30+5X370R	30+5
CD30+7.5X370R	30+7.5
CD30+10X370R	30+10
CD30+15X370R	30+15
CD35+3X370R	35+3
CD35+4X370R	35+4
CD35+5X370R	35+5
CD35+7.5X370R	35+7.5
CD35+10X370R	35+10
CD40+3X370R	40+3
CD40+4X370R	40+4
CD40+5X370R	40+5
CD40+7.5X370R	40+7.5
CD40+10X370R	40+10
CD45+3X370R	45+3
CD45+4X370R	45+4
CD45+5X370R	45+5
CD45+7.5X370R	45+7.5
CD45+10X370R	45+10
CD50+3X370R	50+3
CD50+5X370R	50+5
CD50+7.5X370R	50+7.5
CD50+10X370R	50+10
CD55+5X370R	55+5
CD55+7.5X370R	55+7.5
CD55+10X370R	55+10
CD60+3X370R	60+3
CD60+5X370R	60+5
CD60+7.5X370R	60+7.5
CD60+10X370R	60+10
CD65+5X370R	65+5
CD70+5X370R	70+5
CD70+7.5X370R	70+7.5
CD70+10X370R	70+10
CD75+5X370R	75+5
CD75+7.5X370R	75+7.5
CD75+10X370R	75+10
CD80+5X370R	80+5
CD80+7.5X370R	80+7.5
CD80+10X370R	80+10
CD80+12.5X370R	80+12.5
CD85+5X370R	85+5
CD85+7.5X370R	85+7.5
CD85+10X370R	85+10

440 VOLT

PART NO.	μF
CD85+7.5X440R	80+7.5
CD85+10X440R	80+10

440 VOLT

PART NO.	μF
CD10+5X440R	10+5
CD15+5X440R	15+5
CD20+5X440R	20+5
CD20+15X440R	20+15
CD25+5X440R	25+5
CD25+7.5X440R	25+7.5
CD25+10X440R	25+10
CD25+15X440R	25+15
CD30+3X440R	30+3
CD30+4X440R	30+4
CD30+5X440R	30+5
CD30+7.5X440R	30+7.5
CD35+3X440R	35+3
CD35+4X440R	35+4
CD35+5X440R	35+5
CD35+7.5X440R	35+7.5
CD35+10X440R	35+10
CD35+15X440R	35+15
CD40+3X440R	40+3
CD40+4X440R	40+4
CD40+5X440R	40+5
CD40+6X440R	40+6
CD40+7.5X440R	40+7.5
CD40+10X440R	40+10
CD45+3X440R	45+3
CD45+4X440R	45+4
CD45+5X440R	45+5
CD45+6X440R	45+6
CD45+7.5X440R	45+7.5
CD45+10X440R	45+10
CD50+5X440R	50+5
CD50+7.5X440R	50+7.5
CD50+10X440R	50+10
CD50+12.5X440R	50+12.5
CD55+5X440R	55+5
CD55+7.5X440R	55+7.5
CD55+10X440R	55+10
CD60+3X440R	60+3
CD60+5X440R	60+5
CD60+7.5X440R	60+7.5
CD60+10X440R	60+10
CD60+12.5X440R	60+12.5
CD60+15X440R	60+15
CD65+5X440R	65+5
CD65+10X440R	65+10
CD70+5X440R	70+5
CD70+7.5X440R	70+7.5
CD70+10X440R	70+10
CD75+5X440R	75+5
CD75+7.5X440R	75+7.5
CD75+10X440R	75+10
CD80+5X440R	80+5
CD80+7.5X440R	80+7.5
CD80+10X440R	80+10
CD85+5X440R	80+5

Start Capacitors



PART NO.	μFD X Voltage	DIMENSIONS (DIA x H) (INCH)
CS1000-1200X110	1000-1200 MFD X 110-125V	1-13/16"x3-3/8"
CS108-130X110	108-130 MFD X 110-125V	1-7/16"x2-3/4"
CS108-130X220	108-130 MFD X 220-240V	1-13/16"x3-3/8"
CS108-130X330	108-130 MFD X 330V	2-1/16"x4-3/8"
CS124-156X110	124-156 MFD X 110-125V	1-7/16"x2-3/4"
CS124-156X165	124-156 MFD X 165V	1-7/16"x2-3/4"
CS124-156X220	124-156 MFD X 220-240V	1-13/16"x3-3/8"
CS124-156X330	124-156 MFD X 330V	2-1/16"x4-3/8"
CS130-156X110	130-156 MFD X 110V	1-7/16"x2-3/4"
CS130-156X220	130-156 MFD X 220V	1-13/16"x3-3/8"
CS130-156X330	130-156 MFD X 330V	1-13/16"x4-3/8"
CS145-175X110	145-175 MFD X 110-125V	1-7/16"x2-3/4"
CS145-175X165	145-175 MFD X 165V	1-7/16"x2-3/4"
CS145-175X220	145-175 MFD X 220-240V	1-13/16"x4-3/8"
CS145-175X330	145-175 MFD X 330V	2-9/16"x4-3/8"
CS161-193X110	161-193 MFD X 110-125V	1-7/16"x2-3/4"
CS161-193X165	161-193 MFD X 165V	1-7/16"x2-3/4"
CS161-193X220	161-193 MFD X 220-240V	1-13/16"x4-3/8"
CS161-193X330	161-193 MFD X 330V	2-9/16"x4-3/8"
CS189-227X110	189-227 MFD X 110-125V	1-7/16"x2-3/4"
CS189-227X220	189-227 MFD X 220-240V	2-1/16"x4-3/8"
CS189-227X330	189-227 MFD X 330V	2-9/16"x4-3/8"
CS200-240X110	200-240 MFD X 110-125V	1-7/16"x2-3/4"
CS21-25X110	21-25 MFD X 110-125V	1-7/16"x2-3/4"
CS21-25X220	21-25 MFD X 220-240V	1-7/16"x2-3/4"
CS21-25X330	21-25 MFD X 330V	1-7/16"x2-3/4"
CS216-227X220	216-227 MFD X 220-240V	2-1/16"x4-3/8"
CS216-259X110	216-259 MFD X 110-125V	1-7/16"x3-3/8"
CS216-259X220	216-259 MFD X 220-240V	2-1/16"x4-3/8"
CS216-259X330	216-259 MFD X 330V	2-9/16"x4-3/8"
CS233-280X110	233-288 MFD X 110V	1-7/16"x3-3/8"
CS233-280X220	233-288 MFD X 220V	2-1/16"x4-3/8"
CS233-292X110	233-292 MFD X 110-125V	1-7/16"x3-3/8"
CS233-292X165	233-292 X MFD 165V	1-13/16"x3-3/8"
CS233-292X220	233-292 MFD X 220-240V	2-1/16"x4-3/8"
CS25-30X110	25-30 MFD X 110-125V	1-7/16"x2-3/4"
CS25-30X220	25-30 MFD X 220-240V	1-7/16"x2-3/4"
CS25-30X330	25-30 MFD X 330V	1-7/16"x3-3/8"
CS270-324X110	270-324 MFD X 110-125V	1-7/16"x3-3/8"
CS270-324X165	270-324 X MFD 165V	1-13/16"x3-3/8"

PART NO.	μFD X Voltage	DIMENSIONS (DIA x H) (INCH)
CS270-324X220	270-324 MFD X 220-240V	2-1/16"x4-3/8"
CS270-324X330	270-330 MFD X 330V	2-9/16"x4-3/8"
CS280-336X220	280-336 MFD X 220V	2-1/16"x4-3/8"
CS300-360X110	300-360 MFD X 110-125V	1-13/16"x3-3/8"
CS300-360X330	300-360 MFD X 330V	2-9/16"x4-3/8"
CS30-36X110	30-36 MFD X 110-125V	1-7/16"x2-3/4"
CS30-36X220	30-36 MFD X 220-240V	1-7/16"x2-3/4"
CS30-36X330	30-36 MFD X 330V	1-13/16"x3-3/8"
CS320-384X220	320-480 MFD X 220V	2-1/16"x4-3/8"
CS324-388X110	324-388 MFD X 110-125V	1-13/16"x3-3/8"
CS324-388X330	324-388 MFD X 330V	2-9/16"x4-3/8"
CS340-408X110	340-408 MFD X 110-125V	1-13/16"x3-3/8"
CS36-43X110	36-43 MFD X 110-125V	1-7/16"x2-3/4"
CS36-43X220	36-43 MFD X 220-240V	1-7/16"x2-3/4"
CS36-43X330	36-43 MFD X 330V	1-7/16"x3-3/8"
CS378-440X110	378-440 MFD X 110-125V	1-13/16"x3-3/8"
CS400-480X110	400-480 MFD X 110-125V	1-13/16"x3-3/8"
CS400-480X220	400-480 MFD X 220V	2-1/16"x4-3/8"
CS430-516X110	430-516 MFD X 110V	1-13/16"x3-3/8"
CS43-56X110	43-56 MFD X 110-125V	1-7/16"x2-3/4"
CS43-56X220	43-56 MFD X 220-240V	1-7/16"x2-3/4"
CS43-56X330	43-56 MFD X 330V	1-13/16"x3-3/8"
CS460-552X110	460-552 MFD X 110-125V	1-13/16"x3-3/8"
CS53-70X330	53-70 MFD X 330V	1-13/16"x3-3/8"
CS540-648X110	540-648 MFD X 110-125V	1-13/16"x3-3/8"
CS56-72X110	56-72 MFD X 110-125V	1-7/16"x2-3/4"
CS56-72X220	56-72 MFD X 220-240V	1-7/16"x3-3/8"
CS56-72X330	56-72 MFD X 330V	1-13/16"x3-3/8"
CS590-708X110	590-708 MFD X 110-125V	1-13/16"x3-3/8"
CS64-77X110	64-77 MFD X 110-125V	1-7/16"x2-3/4"
CS64-77X220	64-77 MFD X 220-240V	1-7/16"x2-3/4"
CS64-77X330	64-77 MFD X 330V	1-13/16"x3-3/8"
CS708-850X110	708-850 MFD X 110-125V	1-13/16"x3-3/8"
CS72-88X110	72-88 MFD X 110-125V	1-7/16"x2-3/4"
CS72-88X220	72-88 MFD X 220-240V	1-7/16"x2-3/4"
CS72-88X330	72-88 MFD X 330V	2-1/16"x3-3/8"
CS829-995X110	829-995 MFD X 110-125V	1-13/16"x3-3/8"
CS88-108X110	88-108 MFD X 110-125V	1-7/16"x2-3/4"
CS88-108X220	88-108 MFD X 220-240V	1-13/16"x3-3/8"
CS88-108X330	88-108 MFD X 330V	2-1/16"x3-3/8"

Motors



SM1127

Universal 3.3" Commercial Refrigeration Motor

Replacement for over 100 OEM shaded pole evaporator fan motors

- 1550 rpm, reversible
- Thermal protection
- Open ventilation
- Sleeve bearing
- Ratings: 115VAC/ 1.1A; 230VAC/ 0.6A
- 7.5 μF, 370 V run cap included
- Mounting: Belly band or extended thru bolts



hp Rating	CW 115V	CW 230V	CCW 115V	CCW 230V
1/2	✓	✓	✓	✓
1/15	✓	✓	✓	✓
1/20	✓	✓	✓	✓

Watt Motors



- Cast aluminum housing up to 16 watts
- Cast iron housing for 35 to 50 watts
- Single speed, 1550 rpm
- Single rotation
- Rotation is determined by viewing opposite shaft end (OSE)
- 120 VAC or 230 VAC
- 50/60 Hz
- Totally enclosed
- Overload protected
- Permanent lubrication
- Sleeve bearings
- Universal mounting
- Threaded mounting holes
- Hardware included
- UL® approved

Cast Aluminum Unit Bearing Motors



PART NO.	WATTS	VOLTS	AMPS	ROTATION	SHAFT DIAM.	SHAFT LENGTH
SM5109	2	120	0.28	CWOSE	1/4" Threaded	1/2"
SM5211	4	120	0.36	CWOSE	1/4" Threaded	1/2"
SM5212	4	120	0.32	CCWOSE	1/4" Threaded	1/2"
SM5221	4	230	0.16	CWOSE	1/4" Threaded	1/2"
SM5222	4	230	0.16	CCWOSE	1/4" Threaded	1/2"
SM5311	6	120	0.52	CWOSE	1/4" Threaded	1/2"
SM5312	6	120	0.43	CCWOSE	1/4" Threaded	1/2"
SM5411	9	120	0.6	CWOSE	1/4" Threaded	1/2"
SM5412	9	120	0.64	CCWOSE	1/4" Threaded	1/2"
SM5421	9	230	0.32	CWOSE	1/4" Threaded	1/2"
SM5422	9	230	0.32	CCWOSE	1/4" Threaded	1/2"
SM5811	16	115	0.92	CWOSE	1/4" Threaded	1/2"
SM5812	16	115	0.92	CCWOSE	1/4" Threaded	1/2"
SM5821	16	230	0.48	CWOSE	1/4" Threaded	1/2"
SM5822	16	230	0.48	CCWOSE	1/4" Threaded	1/2"

Cast Iron Unit Bearing Motors



PART NO.	WATTS	VOLTS	AMPS	ROTATION	SHAFT DIAM.	SHAFT LENGTH
SM351	35	120	1.4	CWOSE	1/4" Threaded	1/2"
SM352	35	120	1.4	CCWOSE	1/4" Threaded	1/2"
SM353	35	230	0.7	CWOSE	1/4" Threaded	1/2"
SM354	35	230	0.7	CCWOSE	1/4" Threaded	1/2"
SM501	50	120	1.7	CWOSE	3/8" Smooth Flatted	1/2"
SM502	50	120	1.7	CCWOSE	3/8" Smooth Flatted	1/2"
SM503	50	230	0.85	CWOSE	3/8" Smooth Flatted	1/2"
SM504	50	230	0.85	CCWOSE	3/8" Smooth Flatted	1/2"

Motor Brackets



MB55
Motor Mount Bracket Kit-3 Legs

- Used with 5" and 5.5" motors
- Grommets and eyelets included



MB554
Motor Mount Bracket Kit-4 Legs

- Designed for applications with 9" or 10" bolt circle diameters
- Mounting legs are evenly spaced at 90° angles
- Grommets and eyelets included



Motors

SM670 / SM680 Series Utility Motor Kits

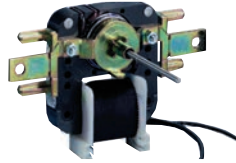


PART NO.	TYPE	VOLTS AC	RPM	CURRENT (AMPS)	SHAFT DIMENSIONS	STACK SIZE	ROTATION (REVERSIBLE)
SM670	Sleeve	120	3000	0.55	3/16" X 1-1/4"	5/8"	CW/CCW
SM671	Sleeve	120	3000	0.55	3/16" X 1-1/4"	5/8"	CW/CCW
SM672	Sleeve	240	3000	0.32	3/16" X 1-1/4"	5/8"	CW/CCW
SM673	Sleeve	120	3000/1550	.55/.34	3/16" X 1-1/4"	5/8"	CW/CCW
SM675	Sleeve	120/240	3000	1.0/.50	3/16" X 2-3/8"	1"	CW/CCW
SM685	Sleeve	120	3000/1550	.82/.21	3/16" X 1-3/4"	7/8"	CW
SM690C	Sleeve	120	3000	0.4	3/16" X 1-1/2"	5/8"	CW



SM6700B Motor Kit

- Replaces Acme Miami® 700
- 120V / 3000rpm
- 3/16" X 1-1/4" Shaft
- 5/8" Stack



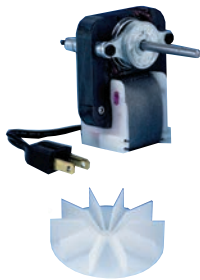
SM999 Universal Evaporator Fan Kit Motor

- 120 VAC
- 3000 RPM
- .31 Amp Reading



SM0740 Sub-Zero® Condenser Fan Motor

- Direct replacement for 4200740



SM550 Series- Ventilator Motors

- Exact Replacement for Nutone® Range Hood Ventilators



PART NO.	SPEED	RPM	SHAFT DIMENSIONS	ROTATION	STACK	LEAD	NUTONE® ROBERTSHAW®	
							NO.	NO.
SM550	1	3000	7/32" X 1 3/4"	CCW	1/2"	120 V Plug	C65878	33-100
SM551	2	High 3000 Low 1640	7/32" X 1 7/16"	CW	7/8"	2 Speed Plug	C52367	33-101
SM552	1	3000	7/32" X 1 1/4"	CCW	3/4"	120 V Plug	C63675	33-103
SM553	1	3000	7/32" X 1 3/4"	CCW	3/4"	Eyelet	C66582	33-104
SM554	2	High 3300 Low 3200	7/32" X 1 7/16"	CCW	7/8"	2 Speed Plug	C27987	33-105
SM555	1	3000	7/32" X 2 3/8"	CCW	5/8"	120 V Plug	C68627	33-106
SM556	1	3000	7/32" X 1 7/8"	CCW	5/8"	120 V Plug	C34484	N/A

Contactors



SMC11 - 2 Pole Magnetic Line Contactor

Features

- Non-positional
- Replaces MARS® 18001 (exact), Honeywell® R850B1146, and Packard® C18001
- Includes 4 terminals and 4 screws
- UL® File Number E328772



1.5 Pole



PART NO.	FULL LOAD AMPS	COIL VOLTAGE
DP25241	25	24
DP251201	25	120
DP252401	25	240
DP30241	30	24
DP301201	30	120
DP302401	30	240

2 Pole

PART NO.	FULL LOAD AMPS	COIL VOLTAGE
DP20242	20	24
DP201202	20	120
DP202402	20	240
DP25242	25	24
DP251202	25	120
DP252402	25	240
DP30242	30	24
DP301202	30	120
DP302402	30	240
DP40242	40	24
DP401202	40	120
DP402402	40	240

3 Pole

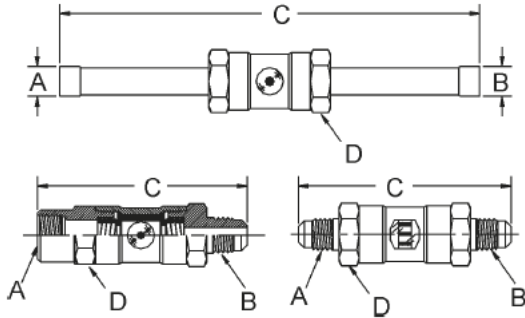
PART NO.	FULL LOAD AMPS	COIL VOLTAGE
DP25243	25	24
DP251203	25	120
DP252403	25	240
DP30243	30	24
DP301203	30	120
DP302403	30	240
DP40243	40	24
DP401203	40	120
DP402403	40	240
DP50243	50	24
DP501203	50	120
DP502403	50	240
DP60243	60	24
DP601203	60	120
DP602403	60	240
DP75243	75	24
DP751203	75	120
DP752403	75	240
DP90243	90	24
DP901203	90	120
DP902403	90	240

Sight Glass, Moisture Indicators & Filter Driers

Allin Liquid Eye™

Coming in 1st Quarter 2014, limited quantities

available now.



SUPCO	A-1	HEX DIMENSIONS					REPLACES
PART NO.	PART NO.	TYPE	SIZE	A	B	C	
SG114	F5904	Sight	3/4	1/4 MF	1/4 FF	3 1/16	
SG115	F5905	Sight	3/4	3/8 MF	3/8 FF	3 1/4	
SG206	F5916	Sight	1	1/2 MF	1/2 FF	3 11/16	
SG207	F5917	Sight	1 1/8	5/8 MF	5/8 FF	4	
SG110	F5900	Sight	3/4	1/4 MF	1/4 MF	3 1/8	
SG111	F5901	Sight	3/4	3/8 MF	3/8 MF	3 3/8	
SG204	F5914	Sight	1	1/2 MF	1/2 MF	3 15/16	
SG205	F5915	Sight	1 1/8	5/8 MF	5/8 MF	4 1/8	
SG118	F5908	Sight	3/4	1/4 S	1/4 S	7 1/4	
SG119	F5909	Sight	3/4	3/8 S	3/8 S	7 3/4	
SG208	F5918	Sight	1	1/2 S	1/2 S	7 3/4	
SG209	F5919	Sight	1 5/8	5/8 S	5/8 S	7 3/4	

SUPCO	A-1	HEX DIMENSIONS					REPLACES
PART NO.	PART NO.	TYPE	SIZE	A	B	C	
SG114R	F5924	Moisture	3/4	1/4 MF	1/4 FF	3 1/16	SSGFM2
SG115R	F5925	Moisture	3/4	3/8 MF	3/8 FF	3 1/4	SSGFM3
SG206R	F5936	Moisture	1	1/2 MF	1/2 FF	3 11/16	SSGFM4
SG207R	F5937	Moisture	1 1/8	5/8 MF	5/8 FF	4	
SG110R	F5920	Moisture	3/4	1/4 MF	1/4 MF	3 1/8	
SG111R	F5921	Moisture	3/4	3/8 MF	3/8 MF	3 3/8	
SG204R	F5934	Moisture	1	1/2 MF	1/2 MF	3 15/16	
SG205R	F5935	Moisture	1 1/8	5/8 MF	5/8 MF	4 1/8	
SG118R	F5928	Moisture	3/4	1/4 S	1/4 S	7 1/4	SSGSS2
SG119R	F5929	Moisture	3/4	3/8 S	3/8 S	7 3/4	SSGSS3
SG208R	F5938	Moisture	1	1/2 S	1/2 S	7 3/4	SSGSS4
SG209R	F5939	Moisture	1 5/8	5/8 S	5/8 S	7 3/4	SSGSS5

SUD Series Copper Driers

PART NO.
SUD103
SUD109
SUD110
SUD111
SUD112
SUD113
SUD114
SUD115
SUD116



LLD Series Liquid Line Filter Driers



PART NO.
LLD032
LLD032S
LLD052
LLD052S
LLD053
LLD053S
LLD082
LLD082S
LLD083
LLD083S
LLD084
LLD084S

PART NO.
LLD163
LLD163S
LLD164
LLD164S
LLD165
LLD165S
LLD304
LLD304S
LLD305S
LLD306S
LLD307S

SSLD Series Suction Line Driers

PART NO.
SSLD83S
SSLD84S
SSLD85
SSLD85S
SSLD165S
SSLD166S
SSLD167S
SSLD307S



CSLD Series Compact Suction Line Driers



PART NO.
CSLD14S4
CSLD14S6
CSLD14S7
CSLD14S9

HP Series Bi-Directional



PART NO.
HP083S
HP163S
HP165



SUD8358 - Standard beaded drier with UV dye and magnetic filter

- 100% XH-9 beaded desiccant, compatible with all refrigerants and oils
- 100 micron filter sieve
- Magnetic reduction filter – reduces microscopic steel, iron
- Adds U.V. dye to the system automatically.



SUD8288 - Solid core cleanout drier with UV dye and a magnetic filter

SUD8288 is a direct replacement for the Electrolux® 5303918288 and all other copper dryers.

APPLIANCE

Refrigerator Relays & Overloads



IC Series

IC100

- 120 volt PTC relay replaces current relays and solid state relays from 1/20 to 1/3 HP. Can be used in any position. Used on over 10,000 models.



IC102

- 120 volt PTC relay replaces current relays and solid state relays from 1/20 to 1/3 HP. Can be used in any position. Used on over 10,000 models. Can be used with or without a run capacitor.



OLK1786

- 1/4 to 1/3 HP relay and overload kit. Can replace 4387913 kit, 819099, 4387836, 4357207, 2154759 as a direct replacement on 2400 Whirlpool® models and as a universal replacement on over 10,000 models as a universal relay overload kit. Instructions included. Can be used with or without run capacitor. 120 volt applications.



OLK7913

- 1/4 to 1/3 HP relay and overload kit. Can replace 4387913 kit, 819099, 4387836, 4357207, 2154759 as a direct replacement on 2400 Whirlpool® models and as a universal replacement on over 10,000 models as a universal relay overload kit. Instructions included. Can be used with or without run capacitor. 120 volt applications.



OLK7535 - Relay & Overload Kit

- Can replace 4387535 kit, 819160, 4387767, 4357210, 2154760, 1421039 as a direct replacement on 2300 Whirlpool®, Roper®, Estate®, KitchenAid®, Maytag®, Magic Chef® models and as a universal replacement relay overload. Instruction included. Can be used with or without run capacitor. 120 volt applications.



SZ4387766 Sub-Zero® Relay and Overload Kit

- Replaces Sub-Zero® and Scotsman® 4387766 relay overload

Motors

SM9703

Evaporator Fan Motor

Can Replace: Whirlpool® W10189703
Used to replace 20 part numbers on 2000 models.

SM2744

Evaporator Fan Motor

Can Replace: Maytag® 12002744
Used on over 100 models.

SM10141

Evaporator Fan Motor

Can Replace: WR60X10141

SM0740

Sub-Zero® Condenser Fan Motor

- Direct replacement for 4200740

SM10185

Evaporator Fan Motor

Can Replace: GE® WR60X10185
Replaces 21 part numbers.
Used on over 100 models.

SM10074

Evaporator Fan Motor

Can Replace: GE® WR60X10074
Used on over 650 models.



Exact Replacement Evaporator Motors

PART NO.	REPLACES
SM329	Whirlpool® 4318001, Original Howard®
SM335	Maytag® 56488-2
SM336	Electrolux® 5300158289
SM338	GE® WR60X162

PART NO.	REPLACES
SM343	Whirlpool® 482731
SM344	GE® WR60X190
SM345	Whirlpool® 4389142
SM399	Whirlpool® 4389144
SM8549	Electrolux® 5303918549



SM9703

Appliance Book Store



PART NO.	DESCRIPTION
EBHR	Refrigeration Repair Manual
EBOC	Oven & Cooktop Repair Manual
EBDW	Dishwasher Repair Manual
EBGW	GE® Washer Repair Manual
EBMW	Maytag® Washer Repair Manual

PART NO.	DESCRIPTION
EBHD	Dryer Repair Manual
EBWD	Whirlpool® Dryer Repair Manual
EBWM	Washer Repair Manual
EBWW	Whirlpool® Washer Repair Manual

Surge Arrestors



Helps protect refrigerators, window air conditioners, dehumidifiers and other appliances from damage due to power interruptions. (Brown-outs)

Minimum Starting Volts	90 VAC single phase
Operating Volts	120 VAC single phase
Maximum Switching	1.0 HP @ 120 VAC (12,000 BTU)
Time Delay	4 minutes +/- 1 minute

PART NO
APP120
COOL
HOT
WASH

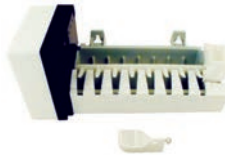
Icemaker Replacement Kits

SUPCO Icemaker Replacement Kits are designed to meet or exceed OEM specifications. Choose from Universal Kits or Direct Replacement Kits.



RIM961 Whirlpool® Icemaker

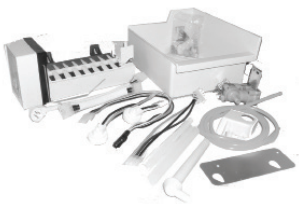
Replaces part number: W10190961



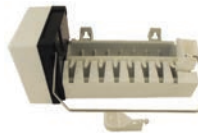
SZ4200520 Sub-Zero® Icemaker

Replace the Sub-Zero® 4200420

Universal Replacement



RIM2000 Universal Icemaker Service Kit for many Major Brands



RIM900 Universal Modular Icemaker

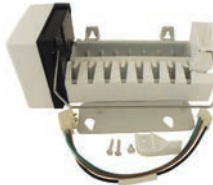
- Replaces D7824760Q

Direct Replacement



RIM277 Electrolux® Icemaker Service Kit

- Replaces 5303918277



RIM300 GE® Icemaker Service Kit

- Replaces IM-1 thru IM-3 Series and UKKIT Series



RIM313 Whirlpool® Icemaker Installation Kit

- Replaces 1129313 & ECKMF-64



RIM316 Whirlpool® Icemaker Installation Kit

- Replaces 1129316 & ECKMF-90

Icemaker Replacement Kits



RIM469
Whirlpool® Icemaker Installation Kit
 • Can Replace 2155469A & ECKMF-94



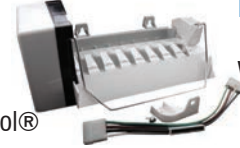
RIM501
Amana® / Maytag® Icemaker Service Kit
 • Can Replace 1110702A, D7824706Q



RIM500
Whirlpool® Icemaker Installation Kit
 • Can Replace 978556 & Mechanical & 4317943 Modular style



RIM943
Replacement Icemaker Kit:
 • Can Replace Whirlpool® 4317943



RIM597
 • Can Replace Whirlpool® 2198597

Icemaker Replacement Parts & Accessories



IMM8366
Icemaker Modular Head
 • Replaces Whirlpool® 628366, 628519



IMM1515
Icemaker Modular Head
 • Replacement Modular Head Kit for Whirlpool® 8201515

Icemaker & Humidifier Installation Kits



C15



STV2

PART NO.	DESCRIPTION	TUBING	VALVE	VALVE TYPE	CONNECTION AT TAP	CONNECTION AT APPLIANCE
STV2	Self Tapping Water Valve		STV2	Self Tapping		
PT25	Valve, 25 foot plastic tubing and all fittings	Plastic	STV2	Self Tapping	1/4" compression	1/4" compression
PT25E	Valve, 25 foot plastic tubing and 2 most popular fittings	Plastic	STV2	Self Tapping	1/4" compression	1/4" compression
C15	Valve, 15 foot 1/4" O.D. copper tubing and all fittings	Copper	STV2	Self Tapping	1/4" compression	1/4" compression
C25	Valve, 25 foot 1/4" O.D. copper tubing and all fittings	Copper	STV2	Self Tapping	1/4" compression	1/4" compression
C15F	Valve, 15 foot 1/4" O.D. copper tubing and all fittings	Copper	STV2	Self Tapping	1/4" compression	1/4" Flare



VI2404
3/4" Brass Valve Adapter Icemaker/ Humidifier
 • 3/4" MHT to 1/4" Compression



WV8046
Water Valve
 • Can Replace: WPL 4318046



WV8047
Water Valve
 • Can Replace: WPL 4318047



TH10025
Thermistor
 • Can Replace: WR55X10025



CB10942
Control Board
 • Can Replace: WR55X10942



Whirlpool® Control Boards

PART NO.	CAN REPLACE
ADC9102	4389102
ADC5988	61005988
ADC8931	4388931
ADC8932	4388932
ADC4099	2304099

Water Filters

Direct Replacement



WF283 for use with Whirlpool®

Can Replace Part Numbers:

Whirlpool®:
4378411



WF285 for use with Whirlpool®

Can Replace Part Numbers:

Whirlpool®
4396508, 4396510,



WF286 for use with Whirlpool®

Can Replace Part Numbers:

Whirlpool®
8171413



WF288 for use with Maytag®

Can Replace Part Numbers:

Maytag®
UKF7003



WF289 for use with Samsung®

Can Replace Part Numbers:

Samsung®
DA29-00003B



WF290 for use with LG®

Can Replace Part Numbers:

LG®/Zenith®
5231JA2002A



WF293 for use with Whirlpool®

Can Replace Part Numbers:

Whirlpool®
4396701



WF295 for use with Maytag®

Can Replace Part Numbers:

Maytag®
UKF8001



WF298 for use with GE®

Can Replace Part Numbers:

GE®
GSWF



WF296 for use with Fisher & Paykel®

Can Replace Part Numbers:

Fisher & Paykel®
836848



WF297 for use with Bosch®

Can Replace Part Numbers:

Bosch®
640565



WF299 for use with Bosch®

Can Replace Part Numbers:

Bosch®
644845



WF300 for use with LG®

Can Replace Part Numbers:

LG®
5231JA2006A



WF294 for use with Samsung®

Can Replace Part Numbers:

Universal and direct replacement
water filters
DA29-00020B



SUPCO's filters are not affiliated, endorsed or sponsored by the referenced OEMs.

Water Filters

Universal Inline

WF270 / WF271



WF270



WF271

Part No.	Filter Media	Filtration Dimensions	Capacity Gallons	Ice Capacity Pounds	Max. Flow Gals./Min.	Length	Diameter	Compression Fitting	Taste / Odor	Scale / Lime	Min PSI	Max PSI	Max Temp
WF270	Carbon	20 microns	1,000	8,000	1	6 3/8"	1 5/8"	1/4"	Yes	No	20	125	100°F
WF271	Carbon	20 microns	4,000	32,000	1	10"	2 1/4"	1/4"	Yes	No	20	125	100°F

Replacement Cartridge

WF284 for use with Electrolux®

Can Replace both blue & white end cap model Part Numbers:

Frigidaire®/Electrolux®
WF1CB



SUPCO's filters are not affiliated, endorsed or sponsored by the referenced OEMs.

Note: The filter cartridge sits inside of a white plastic "cup" and you will need to unscrew the cup before you can see the filter.



CS10398 Crisper Shelf

Replaces WR32X1094,
WR32X10398



KA12 Kleen Air® Odor Absorber

- 8 oz. Bottle
- 12 pack

Compressors

Refrigeration Compressors



- R134a, 110/120V, 60 Hz
- Dual Mounting Points:
2 3/4" X 6 1/2"
4" X 6 1/2"
- 7 1/2" Height
- Includes electricals, grommets, & sleeves



SPC660L

1/5 hp compressor
660BTU
RSCR Relay Start (PTC) Capacitor Run
1.2Amps
126 Watts

SPC236L

1/4 hp compressor
836BTU
RSIR Relay Start (PTC) Induction Run
2.5Amps
181 Watts

SPC990L

1/4 Plus hp compressor
990BTU
RSCR Relay Start (PTC) Capacitor Run
2.2Amps
196 Watts

Refrigeration Door Gaskets



PART NO.	SUB-ZERO® NO.	OLD SUB-ZERO® NO.	DIMENSION
SZ0573	7010573		67.5 X 27.5
SZ0574	7010574		67.25 X 17.625
SZ0575	7010575	3211100	47.75 X 33.75
SZ0578	7010578	3211140	58.5 X 33.75
SZ0583	7010583	3212100	59 X 34
SZ0584	7010584	3212110	67.75 X 27.75
SZ0592	7010592		33.75 X 18.25
SZ0609	7010609	3210180	29.625 X 23.25



PART NO.	REPLACEMENT FOR GE® NO.
SGE10236	WR24X10236 Fresh Food Door Gasket
SGE10229	WR24X10229 Freezer Door Gasket

Direct Replacement



PART NO.	REPLACES
SAD68	MAYTAG® 70048-1
SAD70	MAYTAG® 70048-2
SAD72	MAYTAG® 70048-3
SCS102	WHIRLPOOL® 2188456A
SCS112	WHIRLPOOL® 2188448A
SCS115	WHIRLPOOL® 2188445A
SGE127	GE® WR24X313

PART NO.	REPLACES
SGE286	GE® WR24X286
SGE287	GE® WR24X287
SGE312	GE® WR24X312
SGE318	GE® WR24X318
SGE319	GE® WR24X319
SGE450	GE® WR24X450
SGE485	GE® WR24X485
SGE486	GE® WR24X486

Universal

PART NO.	COLOR	MAXIMUM DOOR SIZE
Four Piece		
SU2001	White	20" X 30"
SU2002	White	32" X 42"
SU2003	White	32" X 55"
SU2004	White	36" X 84"
SU2301	White	20" X 30"
SU2302	White	32" X 42"
SU2303	White	32" X 55"
SU2304	White	36" X 84"

Door Switches



ES18806

PART NO.	SUB-ZERO® NO.
ES18810	7004257
ES18809	7004259
ES18806	

Defrost Timers



SZ3081180 Defrost Timer Sub-Zero®

Direct replacement defrost timer to replace the Sub-Zero® 3081180. Wiring instructions included.

SZ7014648 Defrost Timer Sub-Zero®

Direct replacement defrost timer to replace the Sub-Zero® 7014648. Wiring instructions included.

Energy Saving Exact Replacements

PART NO.	O.E.M. NO.	TIME HOURS	TIME MINUTES
SPA1401AD	Admiral® 66128-1 Electrolux® 215846604	6	21
SPB1401F	Frigidaire® 5300628518 Maytag® 68233-2	8	20
SPD1401AM	Amana® D70041-4 Maytag® R0131577 Frigidaire® 5303321915	8	32
SPG1401GE	GE® WR9X330 Maytag® R0168026	6	25
SPK1401GE	GE® WR9X387 Maytag® R0168027 Amana® D7004119 Amana® D7790403	10	30
SPM6823-3	Maytag® 68233-3 Amana® D7004112 GE® WR9X388	10	21

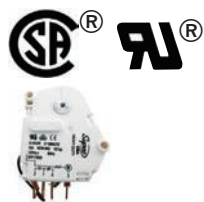


Energy Saving Exact Replacements

PART NO.	REPLACES O.E.M. NO.	INTERNAL	CYCLE TIME	DEFROST TIME	VOLTS
SC950	GE® WR9X481	Resistor	6	25	120V
SC952	GE® WR9X489 GE® WR9X10049 Electrolux® 5304406555	Capacitor	16	35	120V
SC953	GE® WR9X548	Resistor	6	25	120V
SC954	GE® WR9X483 GE® WR9X10041 GE® WR9X10075 GE® WR9X10101 GE® WR9X10111	Resistor	10	30	120V
SC955	GE® WR9X502 GE® WR9X387	Resistor	6	25	120V



Defrost Timers



Flying Lead Timers

PART NO. 12/BOX	PART NO. 200/BOX	REPLACES O.E.M. NO.	CYCLE TIME	DEFROST TIME	MALLORY® NO.	PARAGON® NO.	UNI-LINE® NO.
SPA1403FL	SPA1403XX	Whirlpool® 482493 Electrolux® 5303917634 Maytag® 68233-2 Haier® 60938312 Sub-Zero® 3081180	8	21	34885	E769-00 B931-00	3002-904 UX-2001-00



Classic Style Defrost Timers (Metal Top)

PART NO. 12/BOX	PART NO. 75/BOX	REPLACES O.E.M. NO.	CYCLE TIME	DEFROST TIME	MALLORY® NO.	PARAGON® NO.	PARAGON® NO.	UNI-LINE® NO.
SPB931WP	SP3931XX	Whirlpool® 876369 Whirlpool® 482493; Sub-Zero® 3081180	8	21	34885	E769-00	E931-00	3002-904 UX-2001-00
SPG1111GE	SPG1111XX	GE® WR9X330	6	25	34887	B769-00	D1111-00	3002-902
SPJ1111AM		Amana® D700414 Frigidaire® 5303321915 GE® WR9X396	8	32	34982	D769-00	K1111-00	3002-905
SPL1111W	SPL1111XX	Westinghouse® 5300900072	6	25	34891	G769-00	B1111-00	3002-903
SPN1111AD	SPN1111XX	Whirlpool® 4391974 Admiral® 66128-1	6	21	34886	A769-00	E1111-00	3002-901

UET Series Universal Adjustable Electronic Defrost Timers



PART NO.	VOLTAGE	FREQUENCY	MIN/MULTI
UET120	120	50/60 Hz	6
UET240	208/240	50/60 Hz	6

A MUST FOR EVERY TRUCK



Enlarged view of Adjustable Defrost Time options

Cold Controls

GC Series Direct Replacement Cold Controls

PART NO.	REPLACES
GC116	GE® WR9X208
GC177	GE® WR9X411
GC188	GE® WR9X491
GC192	GE® WR9X499
GC193	ELECTROLUX® 5304404821

GC600 Series Kits

PART NO.
GC601
GC602
GC604
GC607
GC609

Thermostats rated 125 VAC, 1/2 HP, 20 Amps F.L - 80 Amps L.R., SPST switch action.

GC500 Series Kits

PART NO.
GC501
GC503
GC505
GC506

Thermostats rated 125 VAC, 1/2 HP, 20 Amps F.L - 80 Amps L.R., SPST switch action.

GC700 Series Kits

PART NO.
GC701
GC707

Thermostats rated 125 VAC, 1/2 HP, 20 Amps F.L - 80 Amps L.R., SPST switch action.

Thermostats

See pages 22-24 for full TOD thermostat offering.

SL Series Exact Replacement Thermostats

SL2690

Tube Mount Clip
Around Tube
Open 47°F
Close 22°F
Replaces Gibson® G162690-1,
Frigidaire® 08000073,
08000805,
5303917625



SL2691

Mount Kit (includes
Tube & Push-in)
Open 47°F
Close 22°F
Replaces Frigidaire® 5303917954,
GE® WR50X55



SL2697

Mount Side
Push-On
Open 70°F
Close 12°F
Replaces Whirlpool® 4387489,
482290



SL7490

Tube Mount 5/16"
Push -On
Open 48°F
Close 18°F
Replaces Whirlpool® 4387490,
2183073, 2176941
9791823



SL8509

Mount Snap-On
Open 40°F
Close 15°F
Replaces Admiral® 52085-9
52085-5,
52085-20



SL8528

Mount Snap-On
Open 47°F
Close 15°F
Replaces Admiral® 52085-28
69408966



SL10068

Tube Mount 3/8"
Open 140°F
Close 110°F
Replaces GE® WR50X10068



Defrost Heaters

Universal Replacement Glass Defrost Heaters

PART NO.	ELECTRICAL DESCRIPTION	SPECIFICATIONS	OVERALL LENGTH	GLASS LENGTH
SH264	Two Series Tubes	550 W, 115 V	9 1/4"	8 1/2 "
SH267	Single Tube	500 W, 115 V	23 13/16 "	22 13/16 "
SH271	Two Series Tubes	600 W, 115 V	8 3/4"	8"

Exact Replacement Defrost Heaters

PART NO.	DESCRIPTION
SH307	GE® WR51X411
SH308	GE® WR51X413
SH309	GE® WR51X442: 2 Tube Brackets incld.
SH310	GE® WR51X443: 2 Tube Brackets incld.
SH319	Maytag® 60106-34
SH320	Maytag® 60106-35
SH323	GE®WR51X10055

Exact Replacement Defrost Heaters

PART NO.	DESCRIPTION
SH324	GE®WR51X10053
SH325	GE®WR51X10101
SH413	Whirlpool® 978331
SH414	Whirlpool® 978945
SH419	Electrolux® 5303001362
SH442	WP® 851363



SH324

Washer Repair Parts

Whirlpool® Repair Parts

PART NO.	DESCRIPTION	REPLACES
ES247	Lid Switch	3949247
ES671	Lid Switch	285671
ES8084	Lid Switch	8318084
ES9238	Lid Switch	3949238
LP210	Lid Switch	279347
LP115	Washer Pump	285317
LP116	Washer Pump	3363394

Whirlpool® Repair Parts

PART NO.	DESCRIPTION	REPLACES
LP121	Washer Pump	3363892
LP753	Motor Coupler	285753A
LP338	Agitator Dogs (4 pcs)	285770
LP338D	Agitator Dogs (12 pcs)	285770D
LP285	Cam Kit	285811
LP785	Washer Clutch	285785
LP397	Drain Pump	W10276397

GE® Repair Parts

PART NO.	DESCRIPTION	REPLACES
LA189	Tab Strap	WH1X2727
LP112	Washer Pump	WH23X42
LP510	Tab Boot	WH8X246



Miscellaneous Washer Repair Parts



SSD6

PART NO.	DESCRIPTION	MIN/MULTI
GVW151	Universal Replacement Valve	
SSD6	Universal Drain Hose - 6 feet	25 pcs
SSD8	Universal Drain Hose - 8 feet	20 pcs
SSD6GE	GE® Drain Hose - 6 feet	25 pcs
SSD8GE	GE® Drain Hose - 6 feet	20 pcs
TB123A	Universal Spanner Wrench	
WV1	Universal Washer Water Valve	-

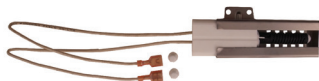


LP123

Maytag® Repair Parts

PART NO.	DESCRIPTION	REPLACES
ES682	Lid Switch	22001682
ES7166	Lid Switch	207166
LP123	Washer Pump	21001906
LP128	Washer Pump	21002240

Oven Range Igniters



SGR4001

Direct Replacement Viking® PB040001

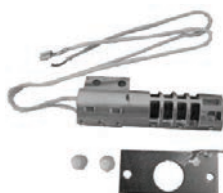
- This range igniter is used on all Viking Glow Bar Ignition Systems® both bake and broil



SGR414

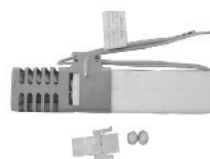
Direct Replacement Maytag® 12400035

- Replaces hundreds of OEM #'s
- Hardware included
- Replaces SGR407– SGR412



SGR Series Round Igniters

PART NO.	LENGTH
SGR403*	5 1/2"



SGR Series Flat Igniters

PART NO.	LENGTH
SGR407	7 1/2"
SGR409	5 1/2"
SGR410	6 1/4"
SGR412	4 1/2"

Belts



PART NO.	DESCRIPTION
LB276	341241
LB216	WE12X82P
LB279	349533
LB234	312959

PART NO.	DESCRIPTION
LB788	12001788
LB1655	6602001655
LB6384	W10006384
LB0101	8540101
LB0024	WH08X10024
LB029	WE12M29



Range Products

Range Knobs



PART NO.	DESCRIPTION
RK100	BLACK, ELECTRIC BURNER KNOBS (4)
RK101	BLACK, ELECTRIC BURNER & OVEN KNOB (1)
RK103	BLACK, ELECTRIC BURNER & OVEN KNOB KIT (5)
RK200	BLACK, GAS BURNER KNOBS (4)
RK201	BLACK, GAS BURNER & OVEN KNOB (1)
RK203	BLACK, GAS BURNER & OVEN KNOB KIT (5)
RK362	WHIRLPOOL® REPLACEMENT KNOB KIT 814362 (9)
RK458	WHIRLPOOL® REPLACEMENT KNOB 307458
RK699	GE® REPLACEMENT TIMER KNOB KIT WB3X5699 (3)

Surface Receptacles



PART NO.	MIN/REPLACE	MULTI
RR105	GE® WB17X210	-
RR122	GE® SURFACE WB17X5051	-
RR109	ELECTROLUX® 5303912666	10 pcs
RR110	WHIRLPOOL® 330031	20 pcs
RR117	ELECTROLUX® 5303935058	10 pcs
RRUPR	UNIVERSAL RECEPTACLE REPLACES UPR	-
RRUPS	UNIVERSAL RECEPTACLE REPLACES UPS	-
RR123	CERAMIC BLOCK MAYTAG® 12001676	-

Range Wire - Triplex, High Temperature



PART NO.	DESCRIPTION
RP0512G	5' 12GA 200°C TRIPLEX HIGH TEMP WIRE
RP0514G	5' 14GA 200°C TRIPLEX HIGH TEMP WIRE
RP2514G	25' 14GA 200°C TRIPLEX HIGH TEMP WIRE
RP0514GB	5' 14GA 200°C TRIPLEX (GL BRD) HIGH TEMP WIRE
RP2514GB	25' 14GA 200°C TRIPLEX GL BRD HIGH TEMP WIRE

Most Popular Plug In Surface Elements



PART NO.	SIZE
SU201	3 turn 6" 1250 watts 240 Volts
SU202	4 turn 8" 2100 watts 240 Volts

Surface Elements



Emerson® Surface Elements

PART NO.	DESCRIPTION
CH30M1	Replaces WB30M1
CH30M2	Replaces WB30M2
CH30T10074	Replaces WB30T10074
CH30T10078	Replaces WB30T10078
CH30X341	Replaces WB30X341
CH30X342	Replaces WB30X342
CH30X354	Replaces WB30X354
CH30X356	Replaces WB30X356
MP15MA	4D6 1500W Surface Element
MP15YA	4T6 1500W Surface Element
MP21YA	5T8 2100W Surface Element
MP26YA	5T8 2600W Surface Element
MP21MA	5D8 2100W Surface Element
MP26MA	5D8 2600W Surface Element
SP12MA	3D6 1250W Surface Element
SP21MA	4D8 2100 Surface Element

Emerson® Bake & Broil

PART NO.	REPLACES
CH1011	RP743
CH2851	RP799
CH2858	RP777
CH2859	RP789
CH2860	RP841
CH2864	RP716
CH2866	RP2866
CH2867	RP2867
CH2891	RP774
CH4107	74004107
CH44K10002	WB44K10002
CH44K10005	WB44K10005
CH44K5009	WB44K5009
CH44K5012	WB44K5012
CH44T10009	WB44T10009
CH44T10010	WB44T10010
CH44T10011	WB44T10011
CH44T10014	WB44K10014
CH44T10018	WB44K10018
CH44X10009	WB44X10009
CH44X10016	WB44X10016
CH44X126	RP44X126
CH44X134	RP44X134
CH44X185	RP44X173
CH44X200	RP44X200
CH44X5019	RP980
CH44X5043	RP44X5043
CH44X5074	RP44X5074
CH44X5082	RP44X5082
CH44X5083	RP44X5083
CH44X5099	RP44X5099
CH4825	RP828
CH4836	RP790
CH4854	RP838
CH4874	RP829
CH4879	RP837
CH4896	RP832
CH5002	318255002
CH5104	316075104
CH528	RP528
CH550	RP550

Emerson® Bake & Broil

PART NO.	REPLACES
CH556	RP556
CH5818	RP842
CH5828	RP795
CH5829	RP856
CH5830	RP798
CH5837	RP796
CH584	RP584
CH5841	RP5841
CH5853	RP5853
CH5855	RP5855
CH5862	RP5862/RP7019
CH587	RP587
CH613	RP613
CH620	RP620
CH624	RP624
CH625	RP625
CH628	RP628
CH629	RP629
CH641	RP641
CH643	RP643
CH653	RP653
CH664	RP664
CH671	RP671
CH672	RP672
CH673	RP673
CH679	RP679
CH687	RP687/RP778
CH691	RP691
CH700	RP700
CH7340	9757340
CH775	RP775
CH776	RP776
CH779	RP779
CH781	RP781
CH809	RP809
CH825	RP825
CH8541	9758541
CH978	RP978
CH979	RP979
CH987	RP987

* Broil

Dishwasher Repair Parts



DW10013 Dishwasher Pump Assembly

- Ready to install
- Hardware included
- Replaces: GE® WD26X10013,
- WD26X10011, WD2610007,
- WD26X10003, WD26X77 and many more



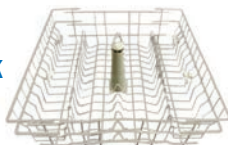
DW105 Pump Rebuild Kit

- Used for WD26X10013
- Replaces: GE® WD19X10032, WD19X62



DW10230 Dishwasher Lower Rack

Replaces: WD28X10369



DW10001 Dishwasher Lower Rack

Replaces: WD28X10284



DW804 Connector

- GDK1 / GDK2



DW156 Door Corner Gasket - Right

- Replaces: GE® WD8X227



DW157 Door Corner Gasket - Left

- Replaces: GE® WD8X228



SSDW7 Universal Drain Hose

- 5/8" X 7 feet
- 5/8", 3/4", 1 1/8" Cutoffs



DW3681 Dishwasher Element

Replaces: W10273414



DW995 Pump

Replaces: W10348269



DW309 Door Cable

Replaces: GE®WD7X14



PART NO.	DESCRIPTION
DW10018	Piston & Nut Assy
DW10277	Stud Roller Lower
DW10136	Roller Lower Rack
DW10304	Rack Slide End Cap
DW271	Roller Rack
DW10074	Roller Lower Rack
DW10267	Stud & Roller Asm

Dryer Repair Parts



DE6105 Dryer Door Switches

PART NO.	CAN REPLACE
DE6105	Whirlpool® 3406105
DE6107	Whirlpool® 3406107
ES16806	GE® WE4M415



DE2002A

Drum Roller

Replaces: 4851EL2002A



DE0019A

Samsung® Dryer Element

Replaces: DC47-00019A



DE7523

Samsung® Dryer Roller

Replaces: DC97-16782A

Dryer Repair Parts

Dryer Restraining Kits



PART NO.	DESCRIPTION	REPLACES
DE315	Restraining Kit	WE11X60
DE333	Restraining Kit	WE11X203
DE334	Restraining Kit	WE11M21C
DE1746C	Restraining Kit	31001946C
DE019AC	Restraining Kit	For DE0019A

Dryer Igniters



PART NO.	DESCRIPTION	REPLACES
SDE364	Dryer Igniter	304970 / 4391996
SDE365	Dryer Igniter	5318EL3W1A
SDE358	Dryer Igniter	WE4X739
SDE366	Dryer Igniter	31001556

PART NO.	CAN REPLACE	DESCRIPTION
DE724	5303281153	Bearing Kit
DE355	WE4X448	Flame Sensor
DE776	WE3X87	Glide



RLE202 12 Ft Dryer Vent Cleaning Kit



RJR601 3 Ft Dryer Vent Cleaning Kit

R3203612 12 Ft Extension Kit

Whirlpool® Repair Parts

PART NO.	DESCRIPTION	REPLACES
DE148	Dryer Element	LA1044
DE353	Dryer Flame Sensor	303377
DE602	Blower Wheel	303836
DE698	Dryer Element	4391960
DE702	Drum Roller	349241
DE702T	Drum Roller Kit	349241T
DE7747	Dryer Element	3387747
DE838	Dryer Element	279838
DE4771	Dryer Element	8544771
DE6107	Door Switch	3406107
L15525W	Dryer Thermostat	3387134
SET176	Dryer Thermostat	53-0771
SET403	Dryer Thermal Fuse	53-1182
SET404	Dryer Thermostat	53-1096
SET405	Dryer Thermostat Kit	LA1053
SET407	Thermal Cutout	33001762
SET408	Thermal Cutout	306604
SET184	Thermal Cutoff Kit	279769
SET185	Dryer Thermostat	3977767
SET194	Dryer Thermostat	279816
SET197	Dryer Thermostat Kit	3977767
SET198	Dryer Thermostat	3390291
SET401	Thermal Cutout	3392519
SET402	Thermal Cutout	3390719
SET409	Thermal Cutout	3399849



DE382AWR Booster Coil

- 3 Terminals
- Replaces GE® WE4X692



DE382BWR Secondary Coil

- 2 Terminals
- Replaces GE® WE4X691



DE382WR Includes both Booster and Secondary Coil

- Replaces 279834, 12001349, 66-6615, WE04X10020, 5303931775



Lint Screens

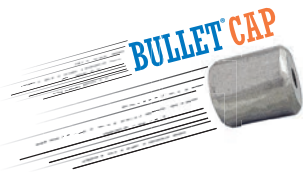
PART NO.	REPLACES
DE520	WE18X26
DE522	339392
DE524	348855
DE525	349639
DE526	8557882
DE534	33001808
DE0998	W10120998
DE964	8531964



SEALED UNIT PARTS CO., INC.
PO Box 21, 2230 Landmark Place,
Allenwood, NJ 08720 USA
Phone: 732-223-6644 Fax: 732-223-1617
www.supco.com • info@supco.com



BRANDS



BULLET®
PIERCING
VALVE



AUTHORIZED MASTER DISTRIBUTOR



Technology & Quality
at your service!

