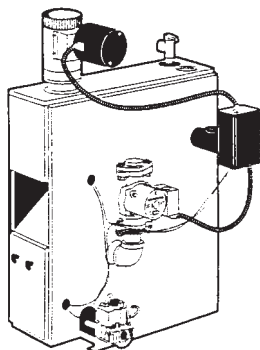


**Natural Draft
Water Boiler**

Hydronics



Features

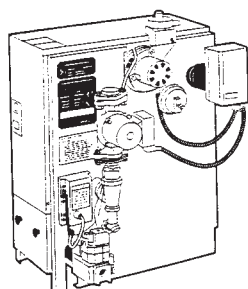
- Fully assembled and pre-wired
- Integral draft hood
- Heavy-duty cast iron sections and push nipples
- Pressure-relief valve
- Stainless/Titanium Alloy Burners
- Propane convertible with accessory kit
- Continuous-pilot or electronic intermittent-pilot ignition
- Draft-safety switch
- Left or right pipe tapings
- Combination pressure/temperature gauge
- Transformer and limit controls with relay
- Drain valve
- Circulator pump shipped unassembled
- Flame-rollout switch

Warranty

- 20-year on heat exchanger section
- 10-year parts warranty for timely registration original purchaser otherwise 5 years

Model No.	Max Input	Capacity	Heating Output	AFUE	Vent Size	Dimensions			WT
						Width	Height	Depth	
BW2AAN000037	37,500	30,000	26,000	81.4	4"	8"	31-3/8"	26-1/2"	220
BW2AAN000070	70,000	57,000	50,000	81.6	5"	11-1/4"	31-3/8"	26-1/2"	268
BW2AAN000105	105,000	85,000	74,000	81.5	6"	14-1/2"	31-3/8"	26-1/2"	320
BW2AAN000140	140,000	113,000	98,000	81.3	6"	17-3/4"	31-3/8"	26-1/2"	376
BW2AAN000175	175,000	142,000	124,000	81.1	7"	21"	31-3/8"	26-1/2"	436
BW2AAN000210	210,000	170,000	148,000	81.0	7"	24-1/4"	31-3/8"	26-1/2"	498
BW2AAN000245	245,000	198,000	172,000	80.8	7"	27-1/2"	31-3/8"	26-1/2"	552
BW2AAN000280	280,000	226,000	197,000	80.7	7"	30-3/4"	31-3/8"	26-1/2"	616

**Induced Draft
Water Boiler**



Features

- Fully assembled and pre-wired
- Electronic ignition
- Fully-insulated jacket
- Transformer and limit control
- Combination pressure/temperature gauge
- Titanium composite burners
- Propane gas convertible with accessory kit
- Circulation pump shipped unassembled
- Left- or right-side pipe tapings
- Flame-rollout switch

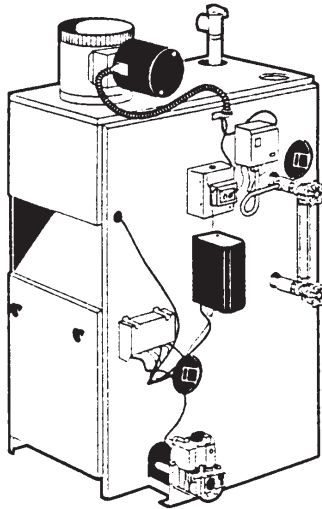
Warranty

- 10-year parts warranty to original purchaser upon timely registration, otherwise 5 years
- 20-year on heat exchanger section

Model No.	Max Input	Capacity	Heating Output	AFUE	Vent Size	Dimensions			WT
						Width	Height	Depth	
BW3AAN000042	42,500	36,000	31,000	84.4	4"	11-1/4"	29"	23-1/4"	215
BW3AAN000075	75,000	63,000	55,000	83.4	4"	14-1/2"	29"	23-1/4"	265
BW3AAN000112	112,500	94,000	82,000	83.0	4"	17-1/2"	29"	23-1/4"	322
BW3AAN000150	150,000	125,000	109,000	82.7	4"	20-3/4"	29"	23-1/4"	370
BW3AAN000187	187,500	155,000	135,000	82.3	4"	24"	29"	23-1/4"	431
BW3AAN000225	225,000	186,000	162,000	82.0	4"	37-1/4"	29"	23-1/4"	480



Steam Boiler



Features

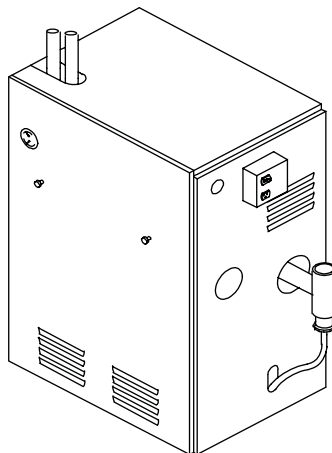
- Fully assembled and pre-wired
- Integral draft hood
- Heavy-duty cast iron sections and push nipples
- Pressure limit control
- Low water cutoff control
- Steam-pressure gauge
- Continuous pilot or electronic intermittent-pilot ignition
- Titanium composite burners
- Propane gas convertible with accessory kit
- Flame-rollout switch
- Draft-safety switch
- Left- or right-side pipe tapings

Warranty

- 10 year parts limited to original purchaser upon timely registration otherwise 5 years
- 12 year limited on heat exchanger section

Model No.	Max Input	Heating Capacity	I=B=R Heating Output	AFUE	Damper Vent Size	Dimensions			WT
						Width	Height	Depth	
BS2AAN000075	75,000	62,000	47,000	82.7	5"	11-1/4"	36-3/8"	26-1/2"	297
BS2AAN000112	112,500	91,000	68,000	80.4	6"	14-1/2"	36-3/8"	26-1/2"	368
BS2AAN000150	150,000	122,000	92,000	80.6	6"	17-3/4"	36-3/8"	26-1/2"	440
BS2AAN000187	187,500	153,000	115,000	80.9	7"	21"	36-3/8"	26-1/2"	512
BS2AAN000225	225,000	183,000	137,000	81.1	7"	24-1/4"	36-3/8"	26-1/2"	584
BS2AAN000262	262,500	214,000	161,000	81.3	7"	27-1/2"	36-3/8"	26-1/2"	659
BS2AAN000299	299,000	245,000	184,000	81.5	7"	30-3/4"	36-3/8"	26-1/2"	736

Condensing Water Boiler



Features

Rated at 90% AFUE

Completely Packaged—Each boiler is completely assembled, including all controls (except room thermostat). All necessary wiring is factory installed. The boiler is ready for gas piping, room thermostat, and electrical power connections as shipped.

Venting—This boiler is direct vented with PVC and factory supplied CPVC pipe. See the Installation Instructions for common venting requirements.

Controls—Integrated Boiler Control provides safe, dependable operation of burners. Factory-installed safety components provide maximum safety against overheating, pressure buildup, and low-water operation.

Warranty

- 10-year parts warranty for timely registration original purchaser, otherwise 5 years
- 15-year on heat exchanger section

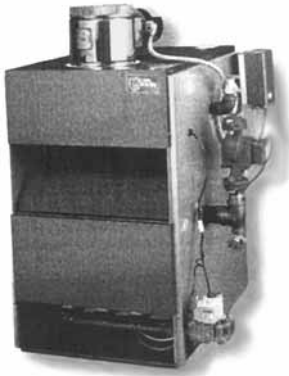
Model No.	Max Input	Heating Capacity	I=B=R Heating Output	AFUE	Vent Size	Dimensions			WT
						Width	Height	Depth	
BW9AAN000050	50,000	45,000	39,000	90%	2"	19-3/4"	39-1/2"	28"	256
BW9AAN000075	75,000	68,000	59,000	90%	2"	19-3/4"	39-1/2"	28"	256
BW9AAN000100	100,000	90,000	78,000	90%	2"	19-3/4"	39-1/2"	28"	256
BW9AAN000125	125,000	113,000	98,000	90%	2"	20-1/8"	40-1/4"	32-5/16"	284
BW9AAN000150	150,000	134,000	117,000	90%	2"	20.125	40-1/4"	32-5/16"	284
BW9AAN000175	175,000	158,000	137,000	90%	2"	20.125	40-1/4"	32-5/16"	284
BW9AAN000200	200,000	180,000	157,000	90%	2"	20.125	40-1/4"	32-5/16"	284

NATURAL DRAFT BOILERS



Utica Series MGB Natural Draft

Hydronics



The MGB Series offers a selection of nine cast iron boilers designed for chimney-vent applications. MGB boilers incorporate an advanced combustion design using atmospheric burners. Choose an optional electronic ignition with standard vent damper and the MGB delivers fuel efficiencies up to 84.1%. Design and packaging features make the MGB easy to install and maintain. An integral draft diverter allows installation of the MGB in areas with only 4 feet of ceiling height.

Features:

- 84.1% AFUE efficiency rating
- Automatic stack damper
- Water tight cast iron push nipples
- Long life cast iron heat exchanger
- Corrosion resistant stainless steel burners
- Natural draft conventional chimney vented
- Natural gas or Propane

Warranty:

- 1 Year Parts
- Limited Lifetime on Heat Exchanger

**Standing Pilot, Natural Draft, Vent Damper with Grundfos Circulator
Certified for Non-Combustible floors**

Model No.	A.G.A. Input BTU	Heating Capacity	I=B=R Net Output	AFUE%	Flue Size	Supply & Return Pipe Size	Casing Dimensions			Approx. Weight
							Width	Height	Depth	
UTMGB50JDG1	50,000	42,000	37,000	80	4"	1-1/4"	11-1/8"	30-3/4"	27"	255
UTMGB75JDG1	75,000	63,000	55,000	80	5"	1-1/4"	15"	30-3/4"	27"	305
UTMGB100JDG1	100,000	83,000	72,000	80	6"	1-1/4"	15"	30-3/4"	27"	310
UTMGB125JDG1	125,000	104,000	90,000	80	6"	1-1/4"	18-7/8"	30-3/4"	27"	355
UTMGB150JDG1	150,000	124,000	108,000	80	7"	1-1/4"	18-7/8"	30-3/4"	27"	360
UTMGB175JDG1	175,000	143,000	124,000	80	7"	1-1/4"	22-3/4"	30-3/4"	27"	420
UTMGB200JDG1	200,000	165,000	143,000	80	8"	1-1/4"	22-3/4"	30-3/4"	27"	425
UTMGB250JDG1	250,000	205,000	178,000	80	8"	1-1/4"	26-5/8"	30-3/4"	27"	495
UTMGB300JDG1	300,000	243,000	214,000	80	9"	1-1/4"	30-1/2"	30-3/4"	27"	555

**Electronic Ignition, Natural Draft, Vent Damper with Grundfos Circulator
Certified for Non-Combustible floors**

Model No.	A.G.A. Input BTU	Heating Capacity	I=B=R Net Output	AFUE%	Flue Size	Supply & Return Pipe Size	Casing Dimensions			Approx. Weight
							Width	Height	Depth	
UTMGB50JIDG1	50,000	42,000	37,000	84.1	4"	1-1/4"	11-1/8"	30-3/4"	27"	255
UTMGB75JIDG1	75,000	63,000	55,000	83.1	5"	1-1/4"	15"	30-3/4"	27"	305
UTMGB100JIDG1	100,000	83,000	72,000	83	6"	1-1/4"	15"	30-3/4"	27"	310
UTMGB125JIDG1	125,000	104,000	90,000	82	6"	1-1/4"	18-7/8"	30-3/4"	27"	355
UTMGB150JIDG1	150,000	124,000	108,000	83	7"	1-1/4"	18-7/8"	30-3/4"	27"	360
UTMGB175JIDG1	175,000	143,000	124,000	81	7"	1-1/4"	22-3/4"	30-3/4"	27"	420
UTMGB200JIDG1	200,000	165,000	143,000	81.9	8"	1-1/4"	22-3/4"	30-3/4"	27"	425
UTMGB250JIDG1	250,000	205,000	178,000	80.5	8"	1-1/4"	26-5/8"	30-3/4"	27"	495
UTMGB300JIDG1	300,000	243,000	214,000	80.5	9"	1-1/4"	30-1/2"	30-3/4"	27"	555

LP Conversion Kits for MGB Series

No.	Models Used On
UTLPKITM50	MGB50
UTLPKITM75	MGB75
UTLPKITM100	MGB100
UTLPKITM125	MGB125
UTLPKITM150	MGB150
UTLPKITM175	MGB175
UTLPKITM200	MGB200
UTLPKITM250	MGB250
UTLPKITM300	MGB300



Utica Series UB90-100
Condensing / Natural Gas



The UB90-100 offers a remarkable 90% AFUE efficiency rating, dramatically reducing fuel consumption and paying for itself in substantial fuel savings. The UB90-100 features integrated boiler control with high limit for operation, safety and diagnostics. Ignition is provided by a hot surface igniter and single stage gas valve. The UB90-100 has sealed combustion, direct-vent forced draft design to draw fresh air from outdoors for combustion, instead of from inside the home.

Warranty:

- 1 Year on Parts
- 15 Years on Heat Exchanger

Features:

- 90% AFUE efficiency rating
- Sealed combustion
- Direct-vent
- Cast-aluminum heat exchanger
- Integrated boiler control w/high limit
- Hot surface igniter/single stage gas valve
- Air flow proving switch
- Easily accessible components
- Safe, economical CPVC and PVC vent pipe
- Natural gas or propane

Condensing, Electronic Ignition , HSI, Aluminum Heat Ex, Microprocessor Control, with Grundfos Circulator

Model No.	A.G.A. Input BTU	Heating Capacity	I=B=R Net Output	AFUE%	Supply & Return Pipe Size	Casing Dimensions			Approx. Weight
						Width	Height	Depth	
UTUB9050G1	50,000	45,000	39,000	90	1-1/4"	28"	39-1/2"	19-3/4"	254
UTUB9075G1	75,000	68,000	90,000	90	1-1/4"	28"	39-1/2"	19-3/4"	254
UTUB90100G1	100,000	59,000	78,000	90	1-1/4"	28"	39-1/2"	19-3/4"	254

Accessories for UB90-100 Series

- UT43331200 Conversion Kit NAT to LP UB90-50
- UT43331201 Conversion Kit NAT to LP UB90-75
- UT43331202 Conversion Kit NAT to LP UB90-100

Utica Series UB90-200
Condensing / Natural Gas



The UB90-200 offers a remarkable 90% AFUE efficiency rating, dramatically reducing fuel consumption and paying for itself in substantial fuel savings. The units feature integrated boiler control with high limit for operation, safety and diagnostics. Ignition is provided by a hot surface igniter and single stage gas valve. Air flow proving switches ensure air intake and exhaust vents are clear. All components are easily accessible for ease of installation and maintenance. Unlike conventional atmospheric boilers, the UB90-200 has sealed combustion, direct-vent forced draft design to draw fresh air from outdoors for combustion, instead of from inside the home.

Warranty:

- 1 Year on Parts
- 15 Years on Heat Exchanger

Features:

- 90% AFUE efficiency rating
- Sealed combustion
- Direct-vent
- Cast-aluminum heat exchanger
- Integrated boiler control w/high limit
- Hot surface igniter/single stage gas valve
- Air flow proving switch
- Easily accessible components
- Safe, economical CPVC and PVC vent pipe
- Natural gas or propane

Condensing, 90% AFUE , HSI, Aluminum Heat Ex, Microprocessor Control, with Grundfos Circulator
Electronic Ignition

Model No.	A.G.A. Input BTU	Heating Capacity	I=B=R Net Output	AFUE%	Supply & Return Pipe Size	Casing Dimensions			Approx. Weight
						Width	Height	Depth	
UTUB90125G1	125,000	112,500	98,000	90	1-1/4"	40-1/4"	20-1/8"	32-5/16"	278
UTUB90150G1	150,000	135,000	117,000	90	1-1/4"	40-1/4"	20-1/8"	32-5/16"	278
UTUB90175G1	175,000	157,500	137,000	90	1-1/4"	40-1/4"	20-1/8"	32-5/16"	278
UTUB90200G1	200,000	180,000	157,000	90	1-1/4"	40-1/4"	20-1/8"	32-5/16"	278

Accessories for UB90-100 Series

- UT14624002 Fill Trol #110 for water boilers 150 MBH or less
- UT14631702 2" CPVC 45 Elbow
- UT14631701 2" CPVC 90 Elbow
- UT14631305 2" CPVC Tee
- UT14631304 2" CPVC Pipe 29 1/2"
- UT14631321 2" CPVC Coupling
- UT1272033 Conversion Kit NAT to LP UB90-125
- UT1272034 Conversion Kit NAT to LP UB90-150
- UT1272035 Conversion Kit NAT to LP UB90-175
- UT1272036 Conversion Kit NAT to LP UB90-200

STEAM | MODULATING BOILERS



Utica Series PEG Steam / Natural Gas

Hydronics



The PEG-C Steam boilers, in six sizes, are the ideal selection for steam system replacement or upgrade. Features such as cast iron heat exchangers and push nipples, corrosion resistant stainless steel burners, and an automatic stackdamper offer dependability and reliability and efficiencies up to 82%. Available with either standing pilot or electronic ignition, for either natural gas or propane, the PEG-C boilers are compactly designed with an integral draft hood. An integral draft diverter allows installation of the PEG-C in areas with low ceilings. The PEG-C is covered by a ten year warranty for residential installations.

Features:

- Up to 82% AFUE efficiency rating
- Long life cast iron heat exchanger
- Corrosion resistant stainless steel burners
- Water tight cast iron push nipples
- Tested for 15 PSI steam ASME working pressure
- Standing pilot or electric ignition
- Natural gas or propane

Warranty:

- 1 Year on Parts
- 10 Years on Heat Exchanger

Standing Pilot, Steam w/LWCO, Natural Draft, Vent Damper, with Grundfos Circulator

Model No.	A.G.A. Input BTU	Heating Capacity	I=B=R Net Output**			Flue Size	Casing Dimensions			Approx. Weight
			BTUH	Sq. Ft.	AFUE%		Width	Height	Depth	
UTPEG112CDE	112,500	90,000	67,500	281	78	5"	14-1/4"	38-3/4"	19-3/4"	375
UTPEG150CDE	150,000	120,000	90,000	375	78	6"	17-1/8"	38-3/4"	19-3/4"	435
UTPEG187CDE	187,000	151,000	13,300	472	78	7"	20"	38-3/4"	19-3/4"	515
UTPEG225CDE	225,000	181,000	135,800	556	78	8"	22-13/16"	38-3/4"	19-3/4"	580
UTPEG262CDE	262,500	212,000	159,000	663	78	8"	25-5/8"	38-3/4"	19-3/4"	635
UTPEG300CDE	299,000	243,000	182,300	760	78	9"	28-1/8"	38-3/4"	19-3/4"	725

** For equivalent square feet of radiation, divide I=B=R output by 240.

Electronic Ignition, Steam w/LWCO, Natural Draft, Vent Damper, with Grundfos Circulator

Model No.	A.G.A. Input BTU	Heating Capacity	I=B=R Net Output**			Flue Size	Casing Dimensions			Approx. Weight
			BTUH	Sq. Ft.	AFUE%		Width	Height	Depth	
UTPEG112CIDE	112,500	90,000	67,500	281	80	5"	14-1/4"	38-3/4"	19-3/4"	375
UTPEG150CIDE	150,000	120,000	90,000	375	80	6"	17-1/8"	38-3/4"	19-3/4"	435
UTPEG187CIDE	187,000	151,000	13,300	472	80	7"	20"	38-3/4"	19-3/4"	515
UTPEG225CIDE	225,000	181,000	135,800	556	80	8"	22-13/16"	38-3/4"	19-3/4"	580
UTPEG262CIDE	262,500	212,000	159,000	663	80	8"	25-5/8"	38-3/4"	19-3/4"	635
UTPEG300CIDE	299,000	243,000	182,300	760	80	9"	28-1/8"	38-3/4"	19-3/4"	725

** For equivalent square feet of radiation, divide I=B=R output by 240.

Accessories for PEG-C Series

- UT5613001 Manual Reset LWCO and Pressure Switch (All Models)
- UT1630001 Water Feeder WF-2-U-24

Utica Series UB95M Modulating / Natural Gas



Utica's new UB95M-200 gas-fired modulating condensing boiler is the only 95% AFUE boiler available today. Ideal for high efficiency replacement jobs, new homes, radiant heating, and domestic hot water applications, UB95M cost saving features include infinitely modulating capacity from 80 to 200 MBH, outdoor temperature reset, and domestic hot water priority. One circulator can service the boiler and all zones. The unit features a standard 115v convenience outlet as well.

Features:

- 95% AFUE efficiency rating
- Sealed combustion
- Direct-vent
- Cast-aluminum mono block heat exchanger
- Integrated modulating boiler control with high limit and probe type low water cut-off
- Direct spark igniter
- Modulating burner, automatic gas valve and blower
- Natural gas or propane

Warranty:

- 1 Year on Parts
- 15 Years on Heat Exchanger

Model No.	A.G.A. Input BTU	Heating Capacity	I=B=R Net Output	Flue Diameter	AFUE%	Casing Dimensions			Approx. Weight
						Width	Height	Depth	
UTUB95MC200DN30	80 / 200	76 / 190	66 / 165	2" CPVC or 3" PVC	95	18"	39-3/8"	30-7/8"	284



Utica Series SSC
Modulating Condensing Hot Water Boiler
Wall Mounted



The Utica SSC “Stainless Steel Condensing” boiler continues that proud tradition. The SSC features our own original stainless steel condensing heat exchanger design. This revolutionary 316L/444 stainless steel fin tube design is the perfect example of the American ingenuity and resourcefulness that define Utica Boilers.

Features

- Mounting Wall: Wall Bracket included.
- Boiler Control Module: Automatic Low Voltage/Intermittent Power Reset. Controls up to 16 boilers for multiple boiler applications.
- User Display interface: Easy programming with text display. Remote mount option utilizes standard thermostat conductor wiring. Outdoor Temperature Sensor included.
- Heat Exchanger: High grade 316L/444 Stainless Steel Fin Coil with Flame Sight Glass.
- Factory installed probe-type Low Water Cut Off with test feature, 30 PSI Safety Relief Valve,
- Boiler Drain Valve and Condensate Drain with built in trap.

Warranty

- 1 Year on Parts
- 15 Years on Heat Exchanger

Model No.	Boiler Input Rate		Heating Capacity	I=B=R Net Output	Supply & Return Pipe Size	Casing Dimensions			Approx. Weight
	Max.	Min.				Width	Height	Depth	
UTUBSSCA050NA0AAA	50,000	10,000	46,000	40,000	1-1/4"	30"	31"	14"	91
UTUBSSCA075NA0AAA	75,000	15,000	69,000	60,000	1-1/4"	30"	31"	14"	91
UTUBSSCA100NA0AAA	100,000	20,000	91,000	79,000	1-1/4"	30"	31"	14"	91
UTUBSSCA150NA0AAA	150,000	30,000	139,000	121,000	1-1/4"	23"	42"	16"	157
UTUBSSCA200NA0AAA	200,000	40,000	185,000	161,000	1-1/4"	23"	42"	16"	157

Contender Boiler
Wall Mounted



The MC Series Heater™ from HTP sets the standard for economy, ease of operation, and energy conservation. Modulating condensing technology and a compact, wall-hung design ensure that the gas-fired MC Series Heater is not only highly efficient, but is easy to install and will provide years of low cost operation.

Features

- Modulating Burner: 3 to 1 turndown
- Two Stage Operation for Central Heating and DHW
- Direct Vent Sealed Combustion 2" PVC Venting
- High Grade Stainless Steel Woven Fiber Mesh Burner
- Terminal Strip for Ease of Field Wiring
- Natural to LP Gas Conversion
- Inlet and Outlet Temperature Sensors
- Central Heating Pump Relay w/Freeze Protection
- Wall Mounts Save Floor Space
- LED Display System Operation
- 120 Volt Convenience Outlet for Condensation Pump
- Outside Termination Fittings - Tee 2" and Coupling 2"
- On/Off Switch
- 12 Year Limited Warranty
- Alarm Contact

- Energy Star Rated
- 30 PSI Relief Valve
- Direct Spark Ignition System
- Ultra Low NOx Operation
- Low Gas Pressure Operation
- Zero Clearance to Combustibles
- Digital Operating Control

Warranty

- 1 Year on parts
- 3 Years on motor
- 12 Years on heat exchanger

Model No.	BTU Input Range	Supply & Return Pipe Size	Air Input / Exhaust Vent Size	Casing Dimensions			Approx. Weight
				Width	Height	Depth	
MUMC50	18,000 - 50,000	1-1/4"	2"	17-1/4"	27-1/2"	12-1/2"	71
MUMC80	19,000 - 80,000	1-1/4"	2"	17-1/4"	27-1/2"	12-1/2"	74
MUMC99	44,000 - 99,000	1-1/4"	2"	17-1/4"	27-1/2"	12-1/2"	84
MUMC120	44,000 - 120,000	1-1/4"	2"	17-1/4"	27-1/2"	12-1/2"	84

MODULATING BOILERS



Elite Boiler Residential

Hydronics



The Elite Heating Boiler from HTP represents the latest advancements in low-mass modulating condensing boiler technology. With best-in-class features throughout the design, the Elite Heating Boiler is the most efficient product in the market at a competitive price. Its aesthetic appeal, versatility, and serviceability make it the right choice for residential and light commercial hydronic space heating.

Features

- * Modulating burner with 5 to 1 turndown
- * Up to 98% Thermal Efficiency
- * High Grade Inconel Burner Design
- * Models Available for Natural or LP Gas
- * Dual Flame monitoring (Spark and Flame probe)
- * Digital operating control with LED display with LED indicators for System Pump - Boiler Pump - DHW Pump - System Fault - System operation
- * Outdoor reset with Indirect Priority
- * Multiple 120 volt pump outputs - Boiler Pump - System Pump - DHW Pump
- * 0-10 VDC input for Building Management System
- * Spark Ignition
- * Password Protected
- * 24 Volt monitoring
- * Boiler Output regulation (Adjustment of boiler output down to 50 percent of rated capacity)
- * Cascade up to 8 boilers

Warranty

- 1 Year on parts
- 3 Years on motor
- 12 Years on heat exchanger

Model No.	BTU Input Range	Supply & Retrun Pipe Size	Air Input / Exhaust Vent Size	Gas Conn.	Casing Dimensions			Approx. Weight
					Width	Height	Depth	
MUEL80	16,000 - 80,000	1"	3"	3/4"	14-1/2"	27-1/4"	17"	104
MUEL110	22,000 - 110,000	1"	3"	3/4"	14-1/2"	27-1/4"	17"	109
MUEL150	30,000 - 150,000	1"	3"	3/4"	14-1/2"	27-1/4"	19-1/2"	122
MUEL220	44,000 - 220,000	1"	3"	1"	14-1/2"	27-1/4"	26-1/2"	164
MUEL299	60,000 - 299,000	1-1/4"	4"	1"	14-1/2"	36-1/2"	23-3/4"	200
MUEL399	80,000 - 399,000	1-1/4"	4"	1"	14-1/2"	36-1/2"	30-3/4"	240

MODCON Boiler Commerical

The Mod Con Commercial Boiler from HTP features an intelligent design that delivers hydronic heating at 94% Thermal Efficiency. The high-grade modulating gas burner operates at a 5 to 1 turndown ratio to meet variable heating needs. Quality construction, a small footprint, and convenient features make the Mod Con Boiler ideal for most commercial heating applications.



Features

- 94% Thermal Efficiency
- Modulating Burner with 5 to 1 turn down
- Built-in sequencer for up to 8 boilers
- Digital display with LED status indicators
- Integrated Control allows only the amount of heated energy required.
- Outdoor sensing with Indirect priority, allows for greater energy savings and comfort
- Multiple Pump outputs - Boiler Pump - System Pump - Indirect Pump
- PC monitoring for history - system operation (optional)
- Self diagnostic electronic control with digital readout to monitor system parameters.
- 24 volt monitor for system safeties
- Adjustable Legs
- Direct Vent Sealed Combustion
- Zero clearance to combustibles
- Low water cutoff standard equipment
- Whisper Quiet Operation
- High Grade Inconel Burner
- Reliable Spark Ignition

Warranty

- 1 Year on parts
- 3 Years on motor
- 10 Years on heat exchanger

Model No.	BTU Input Range	Gross Output BTU / hr	Supply & Retrun Pipe Size	Vent Size	Casing Dimensions			Approx. Weight
					Width	Height	Depth	
MUMODCON300	60,000 - 301,000	283,000	1-1/2"	4"	10-1/4"	36"	35-3/4"	410
MUMODCON500	100,000 - 500,000	470,000	2"	4"	13-1/4"	36"	41-3/4"	505
MUMODCON850	170,000 - 850,000	799,000	2"	6"	16-1/4"	36"	66-3/4"	580



Defender Safety System Atmospheric Vent



Features

- Bradford White ICON System
- Protective Magnesium Anode Rod
- T&P Relief Valve
- Low Restriction Brass Drain Valve
- Advanced ScreenLok® Technology Flame Arrestor Design
- Factory Installed Hydrojet® Total Performance System
- Water Connections—3/4" NPT factory installed true dielectric fittings.

- Resettable Thermal Switch
- Maintenance Free
- Vitraglas® Lining
- 1" Non-CFC Foam Insulation

Warranty

- 6 or 10-Year Limited Tank Warranties
- 6 or 10-Year Limited Warranty on Component Parts

Model No.	Capacity in U.S. Gallons	Input BTUH	Vent Size	Water Conn. (NPT)	Dimensions		Wt
					Height	Width	
BRWMI403S6FBN	40	40,000	3" or 4"	3/4"	50"	20"	131
BRWMI403S6FSX*	40	38,000	3" or 4"	3/4"	50"	20"	131
BRWMI40T6FBN	40	40,000	3" or 4"	3/4"	59-3/8"	18"	120
BRWMI5036FBN	50	40,000	3" or 4"	3/4"	58-5/8"	20"	131
BRWMI504S6FBN	50	50,000	4"	3/4"	58-1/2"	20"	150
BRWMI75S6BN**	75	76,000	4"	1"	63-3/4"	24-1/2"	294

* LP Gas model

** Side Connections - 3/4" NPT tapings that allow easy connections for space heating applications (potable water only).

Defender Safety System High Efficiency Atmospheric Vent



Features

- Bradford White ICON System
- Advanced ScreenLok® Technology Flame Arrestor Design
- Factory Installed Hydrojet® Total Performance System
- Water Connections— true dielectric fittings.
- Factory Installed Heat Traps.
- Protective Magnesium Anode Rod.
- T&P Relief Valve
- Low Restriction Brass Drain Valve

- Resettable Thermal Switch
- Maintenance Free.
- Sight Window
- Vitraglas® Lining
- 2" Non-CFC Foam Insulation.
- Pedestal Base.

Warranty

- 6 or 10-Year Limited Tank Warranties
- 6 or 10-Year Limited Warranty on Component Parts

Model No.	Capacity in U.S. Gallons	Input BTUH	Vent Size	Water Conn. (NPT)	Dimensions		Wt
					Height	Width	
BRWM4403S6FBN	40	40,000	3" or 4"	3/4"	50"	22"	133
BRWM45036FBN	50	40,000	3" or 4"	3/4"	59-5/8"	22"	151

Defender Safety System High Efficiency Atmospheric Vent with Flue Damper



Features

- ENERGY STAR® Qualified
- Automatic Flue Damper
- Honeywell Self Diagnostic Electronic Gas Controls
- Advanced ScreenLok® Technology Flame Arrestor Design
- Factory Installed Hydrojet® Total Performance System
- Water Connections - true dielectric fittings.
- Protective Magnesium Anode Rod.
- T&P Relief Valve—Installed.
- Low Restriction Brass Drain Valve

- Factory Installed Heat Traps.
- Flammable Vapor Sensor
- Resettable Thermal Switch
- Maintenance Free
- Sight Window
- Vitraglas® Lining
- 2" Non-CFC Foam Insulation
- Pedestal Base.

Warranty

- 6 or 10-Year Limited Tank Warranties
- 6 or 10-Year Limited Warranty on Component Parts

Model No.	Capacity in U.S. Gallons	Input BTUH	Vent Size	Water Conn. (NPT)	Dimensions		Wt
					Height	Width	
BRWD4403S6FBN	40	38,000	3" or 4"	3/4"	55-3/4"	22"	151
BRWD45036FBN	50	40,000	3" or 4"	3/4"	64-1/2"	22"	170

High Performance Atmospheric Vent



Features

- High Input Combustion System
- High Recovery and First Hour Delivery
- Helical Fin Flue
- Factory Installed Hydrojet 2™ Total Performance System
- Vitraglas® Lining
- Fully Automatic Controls
- Non-CFC Foam Insulation
- Water Connections - true dielectric fittings
- Two Protective Magnesium Anode Rods
- T&P Relief Valve—Installed.
- Brass Drain Valve—Durable tamper proof design.

Warranty

- 6 Year Limited Tank Warranties
- 6 Year Limited Warranty on Component Parts

Model No.	Capacity in U.S. Gallons	Input BTUH	Vent Size	Water Conn. (NPT)	Dimensions		Wt
					Height	Width	
BRWGX225S6BN	25	78,000	4"	3/4"	58-1/2"	18"	150
BRWGX155S6BN	50	80,000	4"	3/4"	59-5/8"	22"	200

**Defender Safety System
TTW Power Vented**



Features

- Power Vented Water Heater
- Advanced ScreenLok® Technology Flame Arrestor Design
- Flammable Vapor Sensor
- Maintenance Free
- Sight Window
- Factory installed Hydrojet® Total Performance System
- Vitraglas® Lining
- Powerful Blower Motor
- Honeywell Self Diagnostic Electronic Gas Control
- Horizontal & Vertical Venting With 2" or 3" PVC, ABS or CPVC

- 1" Non-CFC Foam Insulation
- Water Connections - true dielectric fittings.
- Factory installed Heat Traps
- Protective Magnesium Rod.
- Pedestal Base.
- T&P Relief Valve—Included.
- Low Restriction Brass Drain Valve

Warranty

- 6 or 10-Year Limited Tank Warranties
- 6 or 10-Year Limited Warranty on Component Parts

Model No.	Capacity in U.S. Gallons	Input BTUH	Vent Size*	Water Conn. (NPT)	Dimensions		Wt
					Height	Width	
BRWM1TW40S6FBN	40	40,000	2" or 3"	3/4"	56-1/2"	20"	135
BRWM1TW50S6FBN	50	50,000	2" or 3"	3/4"	57-3/8"	22"	160

**Refer to product data for maximum equivalent length of PVC*

**Defender Safety System
TTW Power Vented**



Features

- Power Vented Water Heater
- Advanced ScreenLok® Technology Flame Arrestor Design
- Flammable Vapor Sensor
- Maintenance Free
- Sight Window
- Factory installed Hydrojet® Total Performance System
- Vitraglas® Lining
- Powerful Blower Motor
- Honeywell Self Diagnostic Electronic Gas Control
- Horizontal & Vertical Venting With 2" or 3" PVC, ABS or CPVC

- 2" Non-CFC Foam Insulation
- Water Connections - true dielectric fittings.
- Factory installed Heat Traps
- Protective Magnesium Rod.
- Pedestal Base.
- T&P Relief Valve—Included.
- Low Restriction Brass Drain Valve

Warranty

- 6 or 10-Year Limited Tank Warranties
- 6 or 10-Year Limited Warranty on Component Parts

Model No.	Capacity in U.S. Gallons	Input BTUH	Vent Size*	Water Conn. (NPT)	Dimensions		Wt
					Height	Width	
BRWM2TW75T6FBN	75	76,000	3" or 4"	3/4"	68-3/8"	26"	257

**Refer to product data for maximum equivalent length of PVC*

**Defender Safety System
TTW Power Vented High Efficiency**



Features

- ENERGY STAR® Qualified
- Power Vented Water Heater
- Advanced ScreenLok® Technology Flame Arrestor Design
- Flammable Vapor Sensor
- Maintenance Free
- Sight Window
- Factory installed Hydrojet® Total Performance System
- Vitraglas® Lining
- Powerful Blower Motor
- Honeywell Self Diagnostic Electronic Gas Control
- Horizontal & Vertical Venting With 2" or 3" PVC, ABS or CPVC

- 2" Non-CFC Foam Insulation
- Water Connections - true dielectric fittings.
- Factory installed Heat Traps
- Protective Magnesium Rod.
- Pedestal Base.
- T&P Relief Valve—Included.
- Low Restriction Brass Drain Valve

Warranty

- 6 or 10-Year Limited Tank Warranties
- 6 or 10-Year Limited Warranty on Component Parts

Model No.	Capacity in U.S. Gallons	Input BTUH	Vent Size*	Water Conn. (NPT)	Dimensions		Wt
					Height	Width	
BRWM4TW40T6FBN	40	40,000	2" or 3"	3/4"	67	20"	152
BRWM4TW50T6FBN	50	50,000	2" or 3"	3/4"	67	22"	175

**Refer to product data for maximum equivalent length of PVC*

**High Performance
TTW Power Vented**



Features

- High Input Combustion System
- High Recovery and First Hour Delivery
- Integrated Mixing Device
- Helical Fin Flue
- Honeywell Self Diagnostic Electronic Gas Control
- Factory Installed Hydrojet 2™ Total Performance System
- Vitraglas® Lining
- Powerful Blower Motor
- Flammable Vapor Sensor
- Horizontal and Vertical Venting—With 3" or 4" PVC, ABS or CPVC

- Non-CFC Foam Insulation
- 3/4" NPT Side Connections.
- Water Connections - true dielectric fittings.
- Two Protective Magnesium Anode Rods.
- Pedestal Base.
- T&P Relief Valve—Installed.
- Brass Drain Valve

Warranty

- 6 Year Limited Tank Warranties
- 6 Year Limited Warranty on Component Parts

Model No.	Capacity in U.S. Gallons	Input BTUH	Vent Size*	Water Conn. (NPT)	Dimensions		Wt
					Height	Width	
BRWGX2TW25S6BN	25	76,000	3" or 4"	3/4"	62-5/8"	18"	170
BRW1TW55S6BN	55	78,000	3" or 4"	3/4"	63-3/4"	22"	215

**Refer to product data for maximum equivalent length of PVC*



**Electric Lowboy
Water Heaters**



Features

- Applications - Lowboy models are ideal for installations where space is at a premium and are perfect for tight installations such as a closet or under a counter.
- Fully Automatic Controls
- Direct Heat Transfer With Immersed Elements
- Factory Installed Hydrojet® Total Performance Systemld up in tank.
- Vitraglas® Lining
- 2" Non-CFC Foam Insulation
- Water Connections - true dielectric fittings extend
- Factory Installed Heat Traps

- Protective Magnesium Anode Rod
- Simultaneous and Non-Simultaneous Operation Available
- Single Phase or Three Phase Operation Available—277V may only be wired for single phase operation.
- T&P Relief Valve Included—Side T&P is standard
- Low Restriction Brass Drain Valve

Warranty

- 6 or 10-Year Limited Tank Warranties
- 6 or 10-Year Limited Warranty on Component Parts

Based on 240 Volts 4500 Watt / 4500 Watt Elements - Non-Simultaneous operation

Model No.	Capacity in U.S. Gallons	US GPH* Recovery 90°F Rise	Water Conn. (NPT)	Dimensions		Wt
				Height	Width	
BRWM250L6DS	47	21	3/4"	33-1/8"	26"	144

**Based on 4500W / 4500W, Non-Simultaneous operation*

**Utility Electric
Water Heater**



Features

- Fully Automatic Controls
- Direct Heat Transfer With a Single Immersed Element
- Vitraglas® Lining
- 1" Non-CFC Foam Insulation
- Water Connections - true dielectric fittings
- Alternate Top Water Connections—The 6 and 12 gallon models have alternate 3/4" water connection tappings on top.
- Protective Magnesium Anode Rod
- Single Phase Operation Only.
- T&P Relief Valve Included
- Design evaluated by UL in accordance with Part 280.707(d) of HUD Mobile Home Construction and Safety Standards for Energy Efficiency

Warranty

- 6 or 10-Year Limited Tank Warranties
- 6 or 10-Year Limited Warranty on Component Parts

Based on 120 Volts 1500 Watt Element - Non-Simultaneous operation

Model No.	Capacity in U.S. Gallons	US GPH* Recovery 90°F Rise	Water Conn. (NPT)	Dimensions		Wt
				Height	Width	
BRWM16U6SS	6	7	3/4"	16-1/2"	14"	33
BRWM112UT6SS	12	7	3/4"	27-3/4"	14"	48
BRWM120U6SS	9	7	3/4" 4	24-3/4"	18"	59

**Based on 1500 Watt, Non-Simultaneous operation*

**Electric Upright
Water Heaters**



Features

- Applications - Lowboy models are ideal for installations where space is at a premium and are perfect for tight installations such as a closet or under a counter.
- Fully Automatic Controls
- Direct Heat Transfer With Immersed Elements
- Factory Installed Hydrojet® Total Performance Systemld up in tank.
- Vitraglas® Lining
- 2" Non-CFC Foam Insulation
- Water Connections - true dielectric fittings extend

- Protective Magnesium Anode Rod
- Simultaneous and Non-Simultaneous Operation Available
- Single Phase or Three Phase Operation Available—277V may only be wired for single phase operation.
- T&P Relief Valve Included—Side T&P is standard
- Low Restriction Brass Drain Valve

Warranty

- 6 or 10-Year Limited Tank Warranties
- 6 or 10-Year Limited Warranty on Component Parts

Based on 240 Volts 4500 Watt / 4500 Watt Elements - Non-Simultaneous operation

Model No.	Capacity in U.S. Gallons	US GPH* Recovery 90°F Rise	Water Conn. (NPT)	Dimensions		Wt
				Height	Width	
BRWM240S6DS	40	21	3/4"	46-7/8"	20"	103
BRWM250S6DS	50	21	3/4"	46-1/2"	22"	130
BRWM280S6DS	80	21	3/4"	59-1/4"	24"	183

**Based on 4500W / 4500W, Non-Simultaneous operation*

Hydronics

**Light Duty High Input
Atmospheric Vent**



Features

- Bradford White ICON System™
- Factory Installed Hydrojet 2™
- Vitraglas® Lining
- Side Connections—3/4" NPT tapings that allow easy connections for space heating applications (potable water only).
- 2" Non-CFC Foam Insulation
- Pedestal Base.
- Water Connections - true dielectric fittings
- Hand Hole Cleanout
- Protective Magnesium Anode Rod.

- T&P Relief Valve—Installed.
- Low Restriction Brass Drain Valve

Warranty

- 3 or 5 Year Limited Tank Warranties
- 1-Year Limited Warranty on Component Parts

Model No.	Capacity in U.S. Gallons	Input BTUH	Vent Size	Water Conn. (NPT)	Dimensions		WW
					Height	Width W	
BRW75T80B3N	75	76,000	4"	1"	62-3/8"	26"	247
BRW100T88B3N	100	85,000	4"	1-1/4"	68-11/16"	28-1/4"	420

**Electronic Ignition
Atmospheric Vent with Flue Damper**



Features

- Electronic Ignition
- Automatic Flue Damper
- Factory Installed Hydrojet® Sediment Reduction System
- Vitraglas® Lining
- Non-CFC Foam Insulation
- Water Connections - true dielectric
- Hand Hole Cleanout
- E.C.O.—An automatic re-set Energy Cut Off (E.C.O)
- Magnesium Anode Rods
- Sanitizing Capability—Temperature setting up to 180°F (82°C).
- ASME Code Available on all Models Above 200,000 BTU/Hr.

- NSF Construction Available.
- T&P Relief Valve—Installed.
- Brass Drain Valve—Tamper proof.

Warranty

- 3 Year Limited Tank Warranties
- 1-Year Limited Warranty on Component Parts

Model No.	Capacity in U.S. Gallons	Input BTUH	Vent Size	Water Conn. (NPT)	Dimensions		Wt
					Height	Width	
BRWD75T1253N	75	125,000	5"	1-1/2"	72-1/4"	28-1/4"	520
BRWD80T1993N	80	199,000	6"	1-1/2"	71-7/8"	28-1/4"	540
BRW100T1993N	988	199,000	6"	1-1/2"	83-3/8"	28-1/4"	610

**eF Series
Ultra High Efficiency**



Features

- Thermal Efficiency up to 99.1%
- Honeywell Integrated Control
- Direct Spark Ignition
- Premix Power Burner
- Flexible Venting—The eF Series® can vent vertically or horizontally with either 2", 3" or 4" PVC, CPVC or ABS vent pipe.
- 1" NPT Side Connections for Space Heating.
- Sanitizing Capability—Temperature setting up to 180°F (82°C).
- Low NOx Construction Standard.
- ASME Code Available on All Models.

- NSF Construction Available.
- T&P Relief Valve—Installed.
- Low Restrictive Brass Drain Valve

Warranty

- 3 or 5-Year Limited Tank Warranties
- 1-Year Limited Warranty on Component Parts

Model No.	Capacity in U.S. Gallons	Input BTUH	Vent Size*	Water Conn. (NPT)	Dimensions		Wt
					Height	Width	
BRWEF60T125E3N	60	125,000	2", 3", 4"	1-1/2"	57"	28-1/4"	570
BRWEF60T199E3N	60	199,000	2", 3", 4"	1-1/2"	57"	28-1/4"	570
BRWEF100T199E3N	100	199,000	2", 3", 4"	1-1/2"	77-5/8"	28-1/4"	900

*Refer to product data for maximum equivalent length of PVC

Storage Tank



Features

- Applications—Designed for use with boilers, hot water circulation systems and large dump volume applications.
- Vitraglas® Lining
- 2" Non-CFC Foam Insulation
- Water Connections - true dielectric fittings
- Hand Hole Cleanout
- Two Protective Magnesium Anode Rods.
- Steel Tank

- T&P Relief Valve Opening 1" (T&P Not Supplied)
- 3/4" NPT Aquastat Fitting.
- Brass Drain Valve.

Warranty

- 5 Year Limited Tank Warranties
- 1-Year Limited Warranty on Component Parts

Model No.	Capacity in U.S. Gallons	Water Conn. (NPT)*	Dimensions		Wt
			Height	Width	
BRWM3ST120R5	119	2" F, 2" R	62-1/2"	28"	312

*F=Front Connection, R=Rear Connection



**Medium Duty - 3 Elements
Electric Water Heater**



Features

- Fully Automatic Controls
- Direct Heat Transfer With Three Immersed Incoloy Elements
- Factory Installed Hydrojet® Total Performance System
- Vitraglas® Lining
- 2" Non-CFC Foam
- Water Connections - true dielectric fittings
- Protective Magnesium Anode Rod

- Steel Tank
- T&P Relief Valve
- Brass Drain Valve

Warranty

- 3 or 5-Year Limited Tank Warranties
- 1-Year Limited Warranty on Component Parts

All models are wired 240V, 3-phase, 18kW

Model No.	Capacity in U.S. Gallons	US GPH* Recovery 90°F Rise	Water Conn. (NPT)	Dimensions		Wt
				Height	Width	
BRWE3250S33C18	50	74	1-1/4"	46-1/2"	22"	137
BRWE3280R33C18	80	74	1-1/4"	59"	24"	190
BRWE32120R33C18	119	74	1-1/4"	63"	28-1/2"	312

*Based on 18kW operation

**Modulating Water Boiler
High Efficiency**



The Pioneer is unique, made to easily replace old mid to low-efficiency boilers. With its built in storage tank and low pressure drop, the Pioneer is designed to incorporate the pipes and pumps of the old heating systems.

The Pioneer is built with best in class stainless steel materials providing superior resistance against corrosion. It's built to last with minimal maintenance.

Features

- Up to 95% efficient
- Modulating burner
- Space Heating Appliance and Buffer Tank In One
- No Boiler Loop Required
- Direct Connection to the Primary Heating Loop
- PVC Venting Material
- Easier Installation
- Reduced Cost
- Simplified Retro Fitting for Cast Iron Boiler Replacements
- Venting Options: Room air intake, concentric, flexible vent pipe
 - Up to 200 combined feet

Warranty

- 12 Year limited warranty

No	BTU Range	Air Intake / Exhaust Vent		Supply / Return Size	Gas Connection	Dimensions		Weight
		Size	Size			Height	Diameter	
MUPHR10055	35,000 - 100,000	2"	1-1/4" NPT	3/4"	23"	53"	175	
MUPHR13055	35,000 - 130,000	2"	1-1/4" NPT	3/4"	23"	53"	175	
MUPHR16055	40,000 - 160,000	3"	1-1/4" NPT	3/4"	23"	53"	182	
MUPHR19955	40,000 - 199,000	3"	1-1/4" NPT	3/4"	23"	53"	182	

Harry Alter Company offers Quick Ship delivery
within 2 hours from pickup starting at \$28.00.
Orders must be over \$50.00 and less then 100 pounds

Call your local Harry Alter at 800-373-4226

Super Stor Ultra
Indirect Fired Water Heater

Hydronics



The Super Stor Ultra is true advancement in hot water generation. By tying the Ultra into your existing or new boiler as a separate zone with a circulator or zone valve, it will start the boiler only when the Ultra requires hot water and transfers heated energy through the high output heat exchanger to produce larger amounts of hot water.

The Super Stor Ultra's 2" to 3" thick insulation quality, connected to a modern boiler system will reduce your operating cost to produce hot water. Super Stor Ultra does not need expensive maintenance check-ups. Its simple design requires virtually no maintenance, saving money on costly service calls.

Warranty:

The Super Stor Ultra is Covered by a Lifetime Warranty Against Leaks.

Model No.	Capacity	180° F BTU / Size	Working Pressure	Test Pressure	Height	Diameter	Domestic Connection	Approx. Shipping Weight
MUSSU20	20 gallons	84,000	150 PSI	300 PSI	27"	19-1/4"	3/4" NPT Male	57
MUSSU30	30 gallons	102,000	150 PSI	300 PSI	39-1/2"	19-1/4"	3/4" NPT Male	71
MUSSU30LB	30 gallons	114,000	150 PSI	300 PSI	28-1/2"	23-1/4"	3/4" NPT Male	79
MUSSU45	45 gallons	141,000	150 PSI	300 PSI	52-1/2"	19-1/4"	3/4" NPT Male	84
MUSSU60	60 gallons	174,000	150 PSI	300 PSI	52-1/2"	23-1/4"	1" NPT Male	106
MUSSU80	80 gallons	212,000	150 PSI	300 PSI	72"	23-1/4"	1-1/2" NPT Male	141
MUSSU119	119 gallons	269,000	150 PSI	300 PSI	73-1/2"	27"	1-1/2" NPT Male	210

Basement and Garage Radiant Heat Packages

Package #1 0 - 600 sq. ft.
12" on center

Part No.	Qty.	Description
RH136031300	2	1/2" Raupex 300' Coil
RH240021N	1	2 Loop Manifold*
RH261007	2	1/2" R20 Connectors**
RH266170	4	1/2" Bend Supports
RH724448	1	Nylon Ties 1000 per pkg

Package #3 901 - 1,200 sq. ft.
12" on center

Part No.	Qty.	Description
RH136031300	4	1/2" Raupex 300' Coil
RH240041N	1	4 Loop Manifold*
RH261007	4	1/2" R20 Connectors**
RH266170	8	1/2" Bend Supports
RH724448	1	Nylon Ties 1000 per pkg

Package #4 1,201 - 1,800 sq. ft.
12" on center

Part No.	Qty.	Description
RH136031300	5	1/2" Raupex 300' Coil
RH240051N	1	5 Loop Manifold*
RH261007	5	1/2" R20 Connectors**
RH266170	10	1/2" Bend Supports
RH724448	1	Nylon Ties 1000 per pkg

Package #2 601 - 900 sq. ft.
12" on center

Part No.	Qty.	Description
RH136031300	3	1/2" Raupex 300' Coil
RH240031N	1	3 Loop Manifold*
RH261007	3	1/2" R20 Connectors**
RH266170	6	1/2" Bend Supports
RH724448	1	Nylon Ties 1000 per pkg

Package #5 1,501 - 1,800 sq. ft.
12" on center

Part No.	Qty.	Description
RH136031300	6	1/2" Raupex 300' Coil
RH240061N	1	6 Loop Manifold*
RH261007	6	1/2" R20 Connectors**
RH266170	12	1/2" Bend Supports
RH724448	1	Nylon Ties 1000 per pkg

* Each REHAU brass manifold is delivered pre-assembled and ready to install and also comes complete with 1" NPT supply and return manifold isolation valves, mounting brackets, and vent elbows

** 1/2" R20 Connectors come 2 per package

Disclaimer: Heat Load calculation recommended prior to purchase.



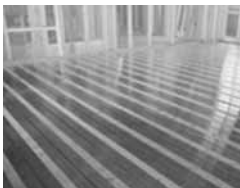
Raupex O2 Barrier Pipe



Raupex O2 Barrier pipe is manufactured using REHAU's high pressured peroxide method for crosslinked polyethylene.

Part No.	Size	Coil	Description
RH136008000	3/8"	1000 ft	Raupex O2 Barrier Pipe
RH136008500	3/8"	500 ft	Raupex O2 Barrier Pipe
RH136031000	1/2"	1000 ft	Raupex O2 Barrier Pipe
RH136031500	1/2"	500 ft	Raupex O2 Barrier Pipe
RH136031300	1/2"	300 ft	Raupex O2 Barrier Pipe
RH136880000	5/8"	1000 ft	Raupex O2 Barrier Pipe
RH136880400	5/8"	400 ft	Raupex O2 Barrier Pipe
RH136051000	3/4"	1000 ft	Raupex O2 Barrier Pipe
RH136051500	3/4"	500 ft	Raupex O2 Barrier Pipe
RH136051100	3/4"	100 ft	Raupex O2 Barrier Pipe
RH136011100	1"	100 ft	Raupex O2 Barrier Pipe
RH136011500	1"	500 ft	Raupex O2 Barrier Pipe
RH136283100	1-1/4"	100 ft	Raupex O2 Barrier Pipe
RH136293100	1-1/2"	100 ft	Raupex O2 Barrier Pipe
RH136303100	2"	100 ft	Raupex O2 Barrier Pipe

Raupanel



Raupanel is a alternative to poured concrete and joist installations. This lightweighted, low-profile system is well suited for both new and retrofit applications.

Part No.	Description
RH235307	6 ft Raupanel plates
RH235337PLY	8" Raupanel return bends
RH235377PLY	2" Plywood furring strip

Support Bends



Creates 90 deg bends without elbows, quickly snapping over Raupex Pipe.

Sizes:
3/8", 1/2", 5/8", 3/4", 1"

PVC Bend Guides

Part No.	Size	Description
RH266170	3/8" & 1/2"	90 deg Bend Guides
RH266175	5/8" & 3/4"	90 deg Bend Guides
RH266180	1"	90 deg Bend Guides

Steel Bend Guides

Part No.	Size	Description
RH258408	3/8" & 1/2"	90 deg Bend Guides

Rautack Foam Staple



For use with Raupex pipe to install rigid foam board insulation. Staples are strong enough so that typically only one staple is required every three feet on straight runs of pipe, with one staple in the middle of bends.

Part No.	Description
RH266187	Rautack Foam Staple

RailFix



For most installation of Raupex pipe in a thermal mass or in a sand bed. Reduces installation time for more economical pipe installation. Pre-drilled for fastening with plastic holding pins.

Part No.	Size	Coil
RH2592382M	1/2"	6-1/2 ft

Plastic Holding Pins



Plastic holding pins used to secure RailFix to rigid insulation.

Part No.	Description
RH259268	Plastic Holding Pins

Locking Clips



Clips allow for rapid installation of Raupex pipe. Locking clips attach to surface with a screw or nail. Raupex pipe or manifold snaps in place when pushed into clip, and can be removed with damaging the clip.

Part No.	Size	Qty	Description
RH261556	1/2'	100	Locking Clips

Nylon Ties



Part No.	Quantity	Description
RH724448	1000 per package	Nylon Pipe Ties

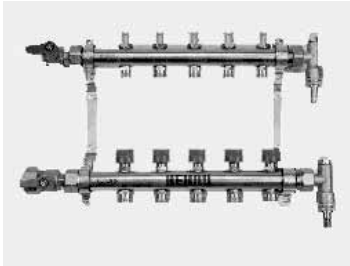
Pressure Tester



Air pressure tester threads into the 1" isolation valve on a Pro-Balance or HLV manifold, and connects to an air hose.

Part No.	PSI Range	Description
RH257334	0 to 200 PSI	Air Pressure Test Kit

Pro-Balanced Manifold with Gauges



- Each manifold comes complete with:
- 1" NPT supply and return isolation valves
 - Air vent / fill ports
 - Visual flow gauge
 - Circuit balancing / isolation valves on return side
 - Mounting Brackets

Part No.	Stations	Manifold Length
RH240021N	2	11.8"
RH240031N	3	14"
RH240041N	4	16.2"
RH240051N	5	19.3"
RH240061N	6	20"
RH240071N	7	23.7"
RH240081N	8	24.8"
RH240091N	9	27"
RH240101N	10	29.2"

Manifold Cabinet



REHAU manifold cabinets are made from galvanized steel with welded seams for strength and durability.

Integral brackets allow for easy mounting of any Pro-Balanced or HLV Brass Manifold. Copper manifolds can be mounted in cabinet using REHAU steel manifold brackets.

Cabinets come with adjustable legs to mount the cabinet on the floor; legs can be removed to flush-mount the cabinet inside the cabinet wall cavity. Cabinets include a steel door and have pipe knockouts on both sides for pipe connections to the manifold.

Part No.	Stations	Width	Height	Depth
RH24441001	1 to 3	15.7"	27.6"	4.3" - 6.3"
RH24442001	2 to 6	21.7"	27.6"	4.3" - 6.3"
RH24443001	3 to 9	29.5"	27.6"	4.3" - 6.3"
RH24444001	4 to 12	37.4"	27.6"	4.3" - 6.3"
RH24445001	5 to 12	45.3"	27.6"	4.3" - 6.3"

Brass Circuit Outlet Cap



Brass circuit outlet cap is used to cap off extra outlets on any Pro-Balance or HLV manifold.

Includes: gasket

Part No.	Description
RH250209C	R-20 Brass Cap with Gasket

BSPP Angle Piece



For Pro-Balance or HLV manifolds. Can be used to install 1" manifold station isolation valves at a right angle to manifold.

Includes: union nut and gasket

Part No.	Size	Description
RH250214	1"	90 deg Angle Piece

Manifold Header Stock



Manifolds are L type copper with open ends. Copper outlets are high temperature brazed into the headers. Each manifold is 72" long with 24 outlets at 3" on center. Do not exceed maximum flow rates listed below.

Part No.	Max GPM	HeaderSize	OutletSize
RH250810	20	1"	1/2"
RH250820	32	1-1/4"	1/2"
RH250827	32	1-1/4"	3/4"
RH250830	44	1-1/2"	3/4"

End Cap Vent Drain



End cap vent drains are for use with copper manifolds for RFH and SIM applications. They allow easy connection of an automatic air vent (1/4" NPT) and a drain valve (1/2" NPT) to the end of the copper manifold.

Part No.	Size	Description
RH250810ECVD	1"	End Cap Vent Drain
RH250820ECVD	1-1/4"	End Cap Vent Drain
RH250830ECVD	1-1/2"	End Cap Vent Drain

Everloc Manual Tool Kit



The Everloc standard tool kit is specifically designed for assembling 1/2" and 3/4" Everloc fittings.

Part No.	Description
RH261216	EVERLOC Manual Tool Kit

Expander Heads



Part No.	Size	Description
RH261866	1/2"	Expander Head
RH261876	5/8"	Expander Head
RH261896	1"	Expander Head

Versaloc Compression Jaws



4-in-1 Versaloc compression jaws are used with the Versaloc compression tool to compress Everloc fittings. The 4-in-1 reduces switching of jaws for common fitting sizes.

Part No.	Description
RH243787	1" VERSALOC Jaws

Pipe Expander

Part No.	Description
RH139592	Pipe Expander



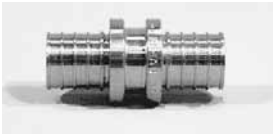
EVERLOC fittings are ideal for all heating and snow and ice melting applications, as well as hydronic radiator connections. EVERLOC fittings and sleeves create reliable connections that can be embedded directly in a thermal mass or walled in. Installation is easy with EVERLOC tools.

Everloc Sleeves



Part No.	Size	Description
RH243507	3/8"	Everloc Sleeve
RH260077	1/2"	Everloc Sleeve
RH243607	5/8"	Everloc Sleeve
RH260577	3/4"	Everloc Sleeve
RH260877	1"	Everloc Sleeve
RH235507	1-1/4"	Everloc Sleeve
RH235707	1-1/2"	Everloc Sleeve
RH235907	2"	Everloc Sleeve

Everloc Couplings



Part No.	Size	Description
RH243517	3/8"	Everloc Coupling
RH260227	1/2"	Everloc Coupling
RH243627	5/8"	Everloc Coupling
RH260317	3/4"	Everloc Coupling
RH260427	1"	Everloc Coupling
RH235527	1-1/4"	Everloc Coupling
RH235727	1-1/2"	Everloc Coupling
RH235927	2"	Everloc Coupling

Everloc Copper Adapters



Part No.	Size
RH260047	1/2" Everloc x 1/2" Female Sweat
RH243637	5/8" Everloc x 1" Male Street or 3/4" Female Sweat
RH260827	3/4" Everloc x 3/4" Male Street or 1/2" Female Sweat
RH260837	3/4" Everloc x 1" Male Street or 3/4" Female Sweat
RH260807	3/4" Everloc x 1" Female Sweat
RH260417	1" Everloc x 1" Male Street or 3/4" Female Sweat
RH260947	1" Everloc x 1-1/4" Male Street or 1" Female Sweat
RH235567	1-1/4" Everloc x 1-1/4" Male Street or 1" Female Sweat

Everloc Dual MPT / Copper Adapters



Part No.	Size
RH243537	3/8" Everloc x 1/2" MPT or 1/2" Female Sweat
RH260237	1/2" Everloc x 1/2" MPT or 1/2" Female Sweat
RH243647	5/8" Everloc x 1/2" MPT or 1/2" Female Sweat
RH260597	3/4" Everloc x 1" MPT or 3/4" Female Sweat
RH260437	1" Everloc x 1" MPT or 3/4" Female Sweat
RH235557	1-1/4" Everloc x 1-1/4" MPT or 1" Female Sweat
RH235757	1-1/2" Everloc x 1-1/2" MPT or 1-1/4" Female Sweat
RH235957	2" Everloc x 2" MPT or 1-1/2" Female Sweat
RH235977	2" Everloc x 2-1/2" MPT

Raupex Connections for Brass Manifolds



For use with Pro-Balance manifolds.

Part No.	Size	Pkg Qty	Description
RH267507	3/8" x R-20	2	R-20 Connector
RH261007	1/2" x R-20	2	R-20 Connector
RH267557	5/8" x R-20	2	R-20 Connector
RH267007	3/4" x R-20	2	R-20 Connector

Raupex Connections for Copper Manifolds



REHAU split-ring compression nut fittings are machined from solid brass stock. Integral fitting / insert design provides positive clamping and sealing action with split compression ring.

Part No.	Size	Pkg Qty
RH260997	1/2" Raupex x 1/2" Sweat	5
RH267567	5/8" Raupex x 1/2" Sweat	5
RH260347	3/4" Raupex x 3/4" Sweat	5
RH260467	1" Raupex x 1" Sweat	5

Straight Ball Valve

Everloc to Copper

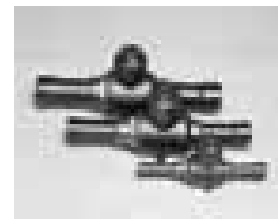


REHAU's Everloc valves provide the same reliable connections as our other fittings. These ball valves complete your heating installation. Easy installation with Everloc tools.

Part No.	Size	Cv
RH261946	1/2" Everloc x 1/2" Sweat	3.0
RH243667	5/8" Everloc x 3/4" Sweat	6.2
RH261376	3/4" Everloc x 3/4" Sweat	6.2

Balancing Ball Valve

Everloc to Copper



Balancing ball valves combine a balancing screw with a ball valve in one unit. To balance flow, use a 1/8" hex key to adjust from 0% to 100%. 10 turns to 100% flow, 5 turns to 50% flow and 1 turn open is 10% flow. Integral ball valve allows quick, positive shut off.

Part No.	Size	Cv
RH260847	1/2" Everloc x 1/2" Sweat	0 - 3.0
RH267597	5/8" Everloc x 1/2" Sweat	0 - 3.0
RH261376	3/4" Everloc x 3/4" Sweat	0 - 3.0

Ultra Poly Barrier r-Foil



Features:

- Alternative to CBF
- Under Concrete
- Radiant Floor Heating
- Snow Melts

Benefits:

- Keeps basement floors dry
- An alternative to foam board
- Cost effective
- Can be installed over uneven ground
- Radiates heat upward

Part No.	Size	Description
CV462048125	4 ft x 125 ft	Foil Double Bubble Poly
CV432048125	4 ft x 125 ft	Foil Double Bubble Poly

Ultra Concrete Barrier r-Foil



Features:

- Under Concrete
- Radiant Floor Heating
- Snow Melts

Benefits:

- Concrete Insulation
- Creates an ideal under concrete insulation
- Is an excellent Vapor and Radon Barrier
- Reflects radiant energy in the desired direction
- Not affected by moisture or humidity

Part No.	Size	Description
CV162048125	4 ft x 125 ft	Bubble Foil Bubble

R-Foil Insulation Usage Guide

CV462048125, CV432048125: Used on top of the gravel base under concrete slabs for radiant floor heat applications. Used under concrete slabs for snowmelt systems. Not to be used under snowmelt systems for paver stone applications. **The white side must be up.**

CV162048125: Used on top of the gravel base under concrete slabs for radiant floor heat applications. Used under concrete slabs for snowmelt systems. Used between 2 concrete slabs for radiant applications

Foam Sealer



Benefits:

- Forms a flexible Seal
- Freeze/Thaw Stable
- Reduces Energy Consumption
- Seals gaps air tight
- Eliminates Rodent and Insect Passage ways
- Multi-Directional

Part No.	Size	Description
TVM36000340	10 oz	Ultra Seal Straw Foam

Fire Stop Silicone



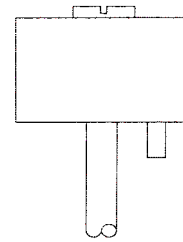
Part No.	Size	Description
TVM36081430	10 oz	Intumescent Firestop Red

Snow Sensor

The LCD-1H Snow Switch saves energy by providing snow melting only while required. That is, during snow fall and for a time thereafter to ensure complete melting.

Features:

- Snow melt only when necessary
- Sense both temperature and precipitation
- Performance optimized for hydronic applications
- Simple installation



Part No.	Model No. D	Description
ET16793	LCD1H	Snow Sensor

Pro-Cool P

Propylene Glycol Based Antifreeze

Intercool NFP 40%, 5 gallons
 - Solid freeze protection to -13° F
 - Burst Temperature -25° F

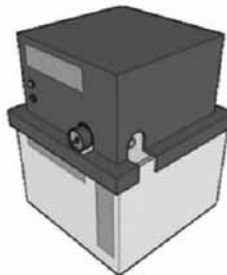
Uses:

- Radiant floor heating
- HVAC systems
- Snowmelt systems
- Chillers

Part No.	Description
64499	5 Gallon Propylene Glycol Based

Glycol Feed Stations

This compact Glycol Feed Package is design for home radiant heat systems and small boilers. Coupled with a optional mounting bracket, this price effective, durable glycol feed system is perfect for use in the home.



Standard Features:

- 7.5 & 15 Gallon Sizes
- Industrial Poly Tank and Cover
- 0.25GPM Gear Pump
- Adjustable Pressure Switch
- Backflow Check Valve
- Isolation Valve
- Two Year Warranty
- Customer Defined Settings

Part No.	Gallons	Description
GTGRE07E64	7.5	Glycol Feed Station
GTGRE15E64	15	Glycol Feed Station

Accessories

Part No.	Description
GTGRE07E64MNT	Wall mount bracket
GTGRE15E64MNT	Wall mount bracket

Silicone Caulk

General Purpose



Part No.	Color	Temperature
CAULKCLEAR	Clear	-50 F to 450 F
CAULKALUM	Aluminum	-50 F to 450 F
CAULKRED	Red	-65 F to 650 F



AM-1 Series Mixing and Diverting



The Honeywell SparcoMix AM series accurately adjust, maintains, and limits the hot water temperature to a desired setting selected by the user.

- Dual purpose mixing or diverting valves.
- Reliable performance at minimum flow of 0.5 gpm
- Maximum Pressure: 150 PSI • Maximum Temperature 212 F

Part No.	Size	Style	Conn. Type	Operating Temp. (F)
HWAM1011	3/4"	A	NPT	100 - 145 deg
HWAM101C1	3/4"	A	NPT	80 - 120 deg
HWAM102C1	1"	A	NPT	80 - 120 deg
HWAM101CUS1	3/4"	B	Union	80 - 120 deg
HWAM101RUS1	3/4"	B	Union	80 - 180 deg
HWAM102CUS1	1"	B	Union	80 - 120 deg
HWAM102RUS1	1"	B	Union	80-180 deg

MX Series Mixing and Diverting Valve

The SparcoMatic is a state-of-the-art mixing valve with Teflon wear surfaces to prevent calcium buildup. Valve controls hot and cold supply based on control setting. Accurate control of temperature provides energy savings, increased comfort and safety for the user.



- Dual purpose mixing or diverting valve.
- Constant water temperature under different operating conditions.
- Flow reduction in seconds if cold water supply is interrupted.
- Maintains temperature with extremely low minimum flows.
- Allen wrench for temperature adjustment included.

Part No.	Size	Conn. Type	Maximum Pressure (PSI)
HWMX127	1"	NPT	150 PSI
HWMX128	1 1/4"	NPT	150 PSI
HWMX129	1 1/2"	NPT	150 PSI
HWMX130	2"	NPT	150 PSI

Honeywell Motorized Zone Valve



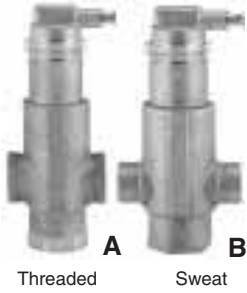
Straight through motorized zone valves normally closed to control water or steam for baseboard radiation, convectors, or close. For 2 wire 24V control circuit with integral switch for auxiliary equipment control. For water pressure to 125 PSI.

Part No.	Honeywell	Size	Each
73550	V8043F1036	7/8" OD	\$226.04
73551	V8043F1051	1-1/8" OD	\$197.06

PowerVent Air Eliminator

The Honeywell SuperVent purges air through a no clog vent assembly that controls dirt and debris to minimize air vent fouling.

- No clog vent
- Dirt and Debris resistant
- 360 degree adjustable collar ring for installation flexibility
- Stainless steel concentrator which eliminates gurgling noise



Part No.	Size	Style	Conn. Type	Max. Pressure (PSI)
HWPV075	3/4"	A	NPT	125 PSI
HWPV075S	3/4"	B	Sweat	125 PSI
HWPV100	1"	A	NPT	125 PSI
HWPV100S	1"	B	Sweat	125 PSI
HWPV125	1 1/4"	A	NPT	125 PSI
HWPV125S	2 1/4"	B	Sweat	125 PSI
HWPV150	1 1/2"	A	NPT	125 PSI
HWPV200	2"	A	NPT	125 PSI

SparcoZone Multiple Zone Valve

SparcoZone2 is the only multiple zone valve that is preassembled, pre-wired and ready to connect. It simplifies the repair of possible leaks and greatly reduces wiring mix-ups.

- Three or four zone multiple zone valves.
- Four SparcoZones, up to sixteen zones, can be assembled.
- Manual opener for each zone.
- Maximum Temperature: 220° F
- Flow Rate: 10 gpm



Part No.	Zones	Conn. Type	Maximum Pressure (PSI)
HWS2Z4S3	4	3/4" Sweat	Header and Controls
HWSH4S	4	3/4" Sweat	Header Only

Tridicator Gauge

Pressure and temperature gauge with relief set point indicator for boilers and shut off valve

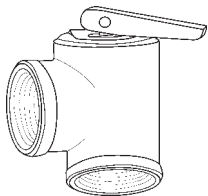


- Temperature Range: 60° F - 320° F

Part No.	Conn. Size	Probe Length	Maximum Pressure (PSI)
HWTD090	1/4" NPT	29/32"	75 PSI

Pressure Relief Valve

Water Pressure Safety Relief Valve
Size: 3/4"
Set 30 PSIG



Part No.	Size	Description
22383	3/4"	30 lb. Pressure Relief Valve

HYDRONIC PARTS



Boiler Fast Fill Valve

FM451: Fast fill pressure regulating boiler feed valve with check valve.



Part No.	Conn.	Regulating Pressure Range	Maxium Pressure (PSI)
HWFM451	Union Sweat	4 PSI to 60 PSI	150 PSI

FM911: Pressure reducing valve 12 psi preset and back-flow preventer. (FM451 and BP900 assembly)



Part No.	Conn.	Regulating Pressure Range	Maxium Pressure (PSI)
HWFM911	Union Threaded	4 PSI to 60 PSI	150 PSI

Backflow Preventer

Double check intermediate vacuum breaker.
Maximum Pressure: 175 PSI
Maximum Temperature: 250 F



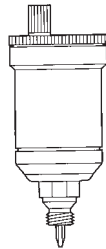
Part No.	Size	Conn. Type	Maxium Pressure (PSI)
HWBP900	1/2"	NPT	175 PSI

Air Vent

EA122A1002: Automatic Air Vent for Non-Heating System Applications.
• Not for use in steam systems.

Purges air trapped in closed hot or cold water systems.

- Maintains quiet and efficient operation.
- Application: Water Treatment



FV180: Honeywell's revolutionary patented fulcrum design offers a venting rate of 3-4 times that of other products.

- Material: Brass
- Maximum Temperature: 240 F

Part No.	Size	Conn. Type	Maxium Pressure (PSI)
HWEA122A1002	1/8"	NPT	90 PSI
HWFV180	1/8"	NPT	150 PSI

Transformer



Part No.	Primary	Sec.	Va Rating
HWAT140A1034	120V	27V	40

Diaphragm Expansion Tank

Honeywell Expansion Tanks are designed to absorb hot water expansion in closed heating systems. They are equipped with butyl diaphragms to separate the air from the system water (glycol).



Honeywell tanks resist waterlogging, loss of pressure through relief valve spills, loss of BTUs and reduce circulator running time. Use the super efficient Honeywell PowerVent or air vents to remove air and micro-bubbles from the system for maximum performance.

- Precharge (psi): 12 PSI
- Maximum Operating Pressure: 100 PSI
- Maximum Operating Temperature: 240 F

Part No.	Conn. Size	Volume	Volume Acceptance
HWTK30015	1/2" NPT	2 gal	1 gal
HWTK30030	1/2" NPT	4.4 gal	2.5 gal
HWTK30060	1/2" NPT	7.6 gal	2.5 gal
HWTK30090	1/2" NPT	14 gal	11.5 gal

XPS Expansion Tank

XPS Series (commercial) Expansion Tanks are designed to absorb hot water expansion in closed heating systems in larger installations. They are equipped with butyl diaphragms to separate clamped design. Pre-pressurized at 12 psi, the tank keeps fluids circulating and maintains minimum system pressure.



Part No.	Conn Size	Volume	Volume Acceptance
HWXPS040V	1" NPT	20 gal	11.3 gal

Thermometer with Thermowells



Part No.	Size	Conn. Type	Temperature Range (F)
HWGS250	1/2"	Sweat	32 to 250 deg



Grundfos Pumps

UPS2699FC

- 3 Speeds with check valve
- Motors: 2 Pole, Single Phase
- Flow Range: 0 - 33 gpm
- Head Range: 0 - 30 ft
- Maximum Fluid Temperature: 230 F
- Minimum Fluid Temperature: 36 F
- Maximum Working Pressure: 145 PSI



Part No.	Speed	Volts	HP	Amps	Watts
	1	115	1/6	1.3	150
GFUP2699FC	2	115	1/6	1.5	179
	3	115	1/6	1.8	197

UPS4344FC

- 3 Speeds with check valve
- Motors: 2 Pole, Single Phase
- Flow Range: 0 - 63 gpm
- Head Range: 0 - 14 ft
- Maximum Fluid Temperature: 230 F
- Minimum Fluid Temperature: 36 F
- Maximum Working Pressure: 145 PSI



Part No.	Speed	Volts	HP	Amps	Watts
	1	115	1/6	1.4	157
GFUP2699FC	2	115	1/6	1.7	189
	3	115	1/6	1.8	203

UPS1558FC

- 3 Speeds with check valve
- Motors: 2 Pole, Single Phase
- Flow Range: 0 - 17.5 gpm
- Head Range: 0 - 19 ft
- Maximum Fluid Temperature: 230 F
- Minimum Fluid Temperature: 36 F
- Maximum Working Pressure: 145 PSI



Part No.	Speed	Volts	HP	Amps	Watts
	1	115	1/25	.55	60
GFUPS1558FC	2	115	1/25	.66	80
	3	115	1/25	.75	87

ALPHA1555FC / LC

- Most Efficient Circulator Built
- Motors: Variable Speed; Permanent Magnet
- Flow Range: 0 - 22 gpm
- Head Range: 0 - 19 ft
- Maximum Fluid Temperature: 230 F
- Minimum Fluid Temperature: 36 F
- Maximum Working Pressure: 150 PSI



Part No.	Volts	Amps	Watts
GFAPLHA1555FLC	115	.65	5 - 45

Flange Set



Part No.	Size	Description
GF519601	3/4"	Flange Set Thread Cast Iron
GF519602	1"	Flange Set Thread Cast Iron
GF519603	1 1/4"	Flange Set Thread Cast Iron
GF519604	1 1/2"	Flange Set Thread Cast Iron

HYDRONIC PARTS

Hydronics

Nix Relays



The state-of-the-art Nix Speed pump series of circulating switching relays simplifies wiring for hydronics heating systems like no other product. With the leading edge features and superior product design, Speed pump makes installations quick and easy.

SP-81D

- 1 Zone Switch Relay
- LED on front cover
- Screwless Terminal Block feature

Part No.	Zones	Description
NXSP81D	1	Single Zone Pump Controller

SP-83P

- 2 and 3 Zone Switch Relay
- LED on front cover
- Screwless Terminal Block feature
- Field configurable Priority function
- 24 VAC (R&C) transformer terminals
- Fuse Protection
- Designed for Cold-Start or Tankless Coil Boiler applications

Part No.	Zones	Description
NXSP83P	3	Three Zone Pump Controller

SP-84M and SP-86M

- 4 and 6 Zone Switching Relay
- LED on front cover
- Screwless Terminal Block feature
- Field configurable Priority function
- Expandable up to 10 zones with SP-M2
- Designed for Cold-Start or Tankless Coil Boiler applications

Part No.	Zones	Description
NXSP84M	4	Four Zone Pump Controller
NXSP86M	6	Six Zone Pump Controller

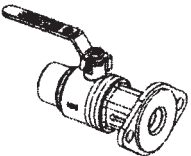
SP-M2

- LED on front cover
- Screwless Terminal Block feature
- Keep the same features of the master control
- Includes 24" plug-in cable

Part No.	Description
NXSPM2	Two Zone Expansion Module

Part No.	Description
NXDS60P	Digital Temp Gauge
NXRLY3N	24VAC Ice Cube Relay
NXRLY4N	120VAC Ice Cube Relay
NXSZV6	6 Zone Valve Control w/ Priority & 75VA Transformer

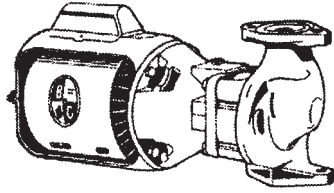
Isolation Valve Kit Sweat



Part No.	Size	Description
GF96806134	1/2"	Isolation Valve Kit
GF96806135	3/4"	Isolation Valve Kit
GF96806136	1"	Isolation Valve Kit
GF96806137	1 1/4"	Isolation Valve Kit
GF96806138	1 1/2"	Isolation Valve Kit

Booster Pumps

Hydronics



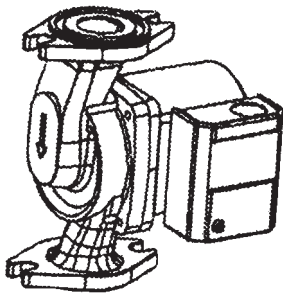
Bell & Gossett in-line 3-piece booster pumps are designed for hydronic systems.

Maximum Working Pressure: 125 PSI
Maximum Operating Temperature: 225 F
Voltage: 115

No.	Model No.	HP	RPM	FLA	Each
BAG102214	2	1/6	1725	1.9	\$1,150.00
BAG102210	HV	1/2	1725	1.9	\$975.00
BAG106189	Series 100	1/12	1725	1.75	\$428.58
BAG106197	Series 100 Bronze	1/12	1725	1.75	\$783.80

No.	Flange Size Inches NPT
BAG102214	2"
BAG102210	1", 1-1/4", 1-1/2"
BAG106189	3/4", 1", 1-1/4", 1-1/2"
BAG106197	3/4", 1", 1-1/4", 1-1/2"

Red Fox Pumps



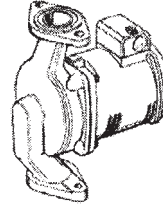
A flanged in-line system lubricated circulating pump designed specifically for quiet operation in a closed hydronic heating system.

Maximum Working Pressure: 125PSI
Maximum Operating Temperature:
NRF-22 240 F
NRF-33 225 F
Voltage: 115

No.	Model No.	Watts	RPM	Each
BAG103350	NRF-33	125	2950	\$250.00
BAG103400	NRF-35	3-Speed Pump		\$421.06
BAG103404	NRF-45	3-Speed Pump		\$473.70
BAG103251	NRF-22	92	2940	\$126.94
BAG103252	NBF-22 Bronze	92	2940	\$391.90

No.	Flange Size Inches NPT
BAG103350	3/4", 1", 1-1/4", 1-1/2"
BAG103400	
BAG103404	
BAG103251	3/4", 1", 1-1/4", 1-1/2"
BAG103252	3/4", 1", 1-1/4", 1-1/2"

**Permanently Lubricated
Booster Pumps**



The Series PL™ close coupled booster pumps are specifically designed for quiet operation in hydronic, radiant and geothermal heating and cooling systems. These inline permanently lubricated pumps are available in cast iron or bronze body construction.

Maximum Working Pressure: 150 PSI
Maximum Operating Temperature: 225 F
Voltage: 115

No.	Model No.	HP	RPM	FLA	Each
BAG1BL012	PL-30	1/12	2650	1.4	\$407.90
BAG1BL002	PL-45	1/6	3300	2.1	\$486.50
BAG1BL004	PL-45B Bronze	1/6	3300	2.1	\$672.98

No.	Flange Size Inches NPT
BAG1BL012	3/4", 1", 1-1/4", 1-1/2"
BAG1BL002	1", 1-1/4", 1-1/2"
BAG1BL004	1", 1-1/4", 1-1/2"

**Power Packs
Motors**



No.	Voltage	HP	Motor Dia.	RPM	Each
BAG111034	115	1/12	----	1725	\$380.84
BAG111031	115	1/6	5"	1725	\$531.52
BAG111061	115	1/6	5"	1725	\$605.48
BAG111040	115	1/4	----	1725	\$1,035.62
BAG111042	115	1/3	----	1725	\$1,324.12

No.	Used on Pump Model No.
BAG111034	Series 100
BAG111031	1", 1-1/4", 1-1/2", 2"HV, PR
BAG111061	1", 1-1/4", 1-1/2", 2"HV, PR
BAG111040	2-1/2", LD
BAG111042	HD-3

Motor Mount



No.	Description	Each
BAG118223	B&G Motor Mount Set	\$29.18



Coupler



No.	Used on Model No.	Each
BAG118705*	Series 100, 1", 1-1/4", 1-1/2", 2", HV, PR	\$20.96
BAG118473	PD-35, PD-37	\$59.04
BAG118723	2-1/2", LD-3, HD-3	\$38.20

* This Coupler is Cast Iron

Impeller



No.	Used on Model No.	Each
BAG118431	Series 100	\$64.60
BAG189132	Series 100	\$28.14
BAG189128	2", HV	\$124.50

Motor Seal Kit



Seal Kit is used in following Pump Models: Series 100 (#75, #100, #125, #150), 1", 1-1/4", 1-1/2", 2", HV, PR, 2-1/2", LD-3, HD-3, PD-35, PD-37, Series 60 "AA" & Series 1522

No.	Description	Each
BAG118681	B&G Seal Kit No. 7	\$40.28

#97 Air Vent

No.	Description	Each
BAG113222	#97 Auto Air Vent	\$12.10

Bearing Assembly



No.	Used on Model No.	Each
BAG118844	Series 100	\$134.74
BAG189034	Series 100 Bronze PR, 2-1/2", LD-3, HD-3	\$134.74
BAG189105		\$355.28
BAG189162	1", 1-1/4", 1-1/2"	\$127.03
BAG189163	1-1/2" Bronze, 2", HV	\$250.00
BAG189165	1-1/2", 2", HV	\$390.56
BAG186863	PD-35, PD-37, Series 60 "AA" Series 1522	\$510.54

Flanges



Iron

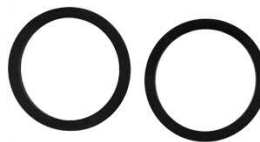
No.	Description	Each
BAG101001	3/4" Flange	\$11.24
BAG101002	1" Flange	\$11.24
BAG101003	1-1/4" Flange	\$11.24
BAG101004	1-1/2" Flange	\$11.40
BAG101005	1" Flange	\$11.90
BAG101006	1-1/4" Flange	\$11.90
BAG101007	1-1/2" Flange	\$11.90

Bronze

No.	Description	Each
BAG101011	3/4" Flange	\$25.14
BAG101012	1" Flange	\$24.48
BAG101013	1-1/4" Flange	\$24.48
BAG101014	1-1/2" Flange	\$25.14
BAG101015	1" Flange	\$34.26
BAG101016	1-1/4" Flange	\$33.36
BAG101017	1-1/2" Flange	\$34.26

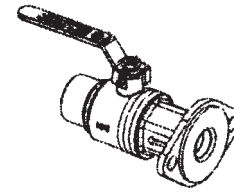
Flange Gasket Set

Used on Series 100, 1-1/4", PR, 60-1AA, 60-1-1/4AA



No.	Description	Each
BAG118368	Gasket Set	\$8.92

Isolation Flange



The Check-Trol flange is a combination of isolation valve, flow control valve, and companion flange for circulators. The ball valve allows the circulator to be removed from the system without draining the system.

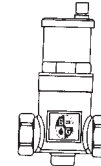
The internal spring check prevents gravity circulation. Free floating companion flange makes pump installation a snap.

Maximum working pressure: 150 psig
Maximum operating temperature: 200° F

No.	Description	Each
BAG101224*	1" NPT HV x Flange	\$71.86
BAG101225*	1-1/4" NPT HV x Flange	\$84.46
BAG101242*	1-1/2" NPT HV x Flange	\$100.00
BAG101221**	3/4" NPT x Flange	\$79.18
BAG101222**	1" NPT x Flange	\$79.18
BAG101241**	1-1/2" NPT x Flange	\$158.34

*Used on Model Nos.: PL-45, PL-50, and SERIES HV
**Used on Model Nos.: NRF, NBF, PL-30, PL-36, PL-55, SSF, SERIES 100, PR, and LR.

Air Separator EASB-JR



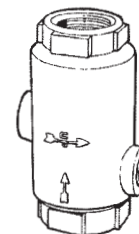
The Bell & Gossett Model EASB-JR Enhanced Air Separator automatically removes entrained

air bubbles in hydronic systems. As fluid enters the EASB-JR, the velocity is slowed down creating a low pressure area.

Maximum Operating Temp: 250° F
Working Pressure: 150 PSI

No.	Description	Each
BAG112114	3/4" Sweat	\$167.60
BAG112115	1" Sweat	\$180.78
BAG112116	1-1/4" Sweat	\$265.24
BAG112111	3/4" NPT	\$163.06
BAG112112	1" NPT	\$175.90
BAG112113	1-1/4" NPT	\$258.06
BAG112117	1-1/2" NPT	\$305.84

Inline Air Separator IAS



B&G In-Line Air Separator Fittings are designed to effectively separate free air in hydronic heating/cooling systems.

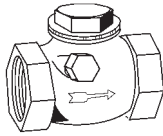
No.	Description	Each
BAG112118	1" NPT	\$32.12
BAG112119	1-1/4" NPT	\$32.12
BAG112097	1-1/2" NPT	\$71.60

HYDRONIC PARTS



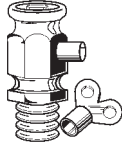
Hydronics

Swing Check Valve



No.	Description	Each
BLP0201243	1/2" Swing Check Valve	\$6.60

Hot Water Air Vent



No.	Description	Each
BLP5094410	Hot Water Air Vent with Key	\$4.32
BLP6094420	Hot Water Vent Kit	\$0.60

White Rodgers Air Switch

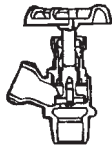


This air switch comes in SPDT configuration that can be actuated by negative or positive pressure or by pressure differential.

This enables the switch to be used to prve air flow in duct heater, power humidifiers, refrigeration and air conditioning coils, gas fired units, and natural draft boilers, etc. the range is adjustable on pressure rise 7" to 12" W.C. Switch SPDT, 300 VA Pilot Duty or 10A non-inductive 115-277 Volt, AC Sample line connection will take 1/4" OD tubing threaded 7/16" 24 with nut and ferrule. Operating temperature range is -40 F to 180 F. Diaphragm must be mounted in vertical position.

No.	Model	Each
21317	WR770-1	\$106.76

Boiler Drain Valve



No.	Nominal Size	Each
06424	1/2" Male IPT	\$7.54
06425	3/4" Male IPT	\$7.74

Switching Relay

The R8845U Universal Switching Relay with 24 V transformer provides intermediate switching of line-and low-voltage devices from a line-or low-voltage controller and is typically applied in Hydronic heating systems.

Features

- Replaceable socketed relays.
- Two troubleshooting LED.
- Push-to-test button.
- Replaceable transformer fuse.
- Low-voltage contact rating for Powerpile applications.
- Long-life DC relay drive control technology.
- Relay for use with external 24 Vac or 24 Vdc supply. With line-voltage control, or with internal 24 V transformer supply.



No.	Description	Each
HONR8845U1003	Switching Relay	\$105.26

Low Water-Cutoff Steam Boilers

- For residential and commercial applications
- For boilers of any steaming capacity
- Dual precision switches for dependable operation of the low water cut-off and alarm or electric water feeder
- Maximum steam pressure 20 PSI



Electrical Ratings

Voltage	Motor Switch Rating (Amps)		Pilot Duty
	Full Load	Locked Roto	
120 VAC	7.4	44.4	125 VA
240 VAC	3.7	22.2	125 VA

No.	Description	Each
MCM67	Low Water Cut-Off	\$454.06

Water Feeder

- For steam and hot water boilers
- Maximum water supply pressure 150 PSI
- Maximum inlet water temperature 120 F
- Maximum boiler pressure 25 PSI



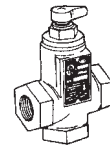
Electrical Ratings

Voltage	Motor Switch Rating (Amps)		Pilot Duty
	Full Load	Locked Roto	
120 VAC	10.2	61.2	125 VA
240 VAC	5.1	30.6	125 VA

No.	Description	Each
MCM472	Combination Feeder	\$1,159.46

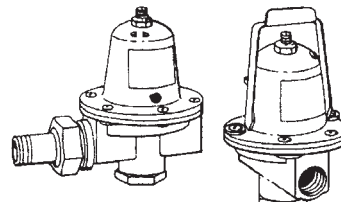
Flo Control

B&G Flo-Control Valves are used for preventing gravity flow in forced water systems and to permit summer-winter operation of indirect water heaters.



No.	Size	Each
BAG107034	3/4"	\$83.30
BAG107018	1"	\$87.84
BAG107019	1-1/4"	\$114.54
BAG107020	1-1/2"	\$177.00

Pressure Reducing Valve

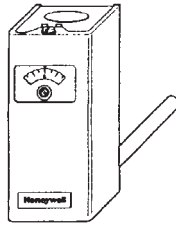


No.	Size	Each
BAG110192	1/2" NPT 12 PSIG	\$61.96
BAG110196	3/4" NPT 12 PSIG	\$106.28



Surface Aquastat Single Pole Double Throw L6006

For either vertical or horizontal surface mounting using a 8-1/2" clamp. Range is 100 f to 240 F with a 5 F to 30 f adjustable differential. The SPDT Micro Switch has many uses. As a limit switch, one side opens on temperature rise. Used to stop a fan from blowing cold air, the other side opens on temperature drop. Switch has 8 Amp, 120V or 5.1 Amp 240V rating.

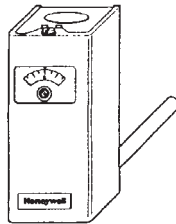


L6006 replaces: L410-1-A, L438-A-B, LA409-C, LA109-A-B, L109-1-3-4-A--B-C-D, L138-A-B, L409-1-3-4-A-B-C-D

No.	Model No.	Each
73784	L6006C1018	\$166.24

High or Low limit Aquastat Controller L4006

Aquastat Controllers are immersion type devices for limiting or regulating the temperature of liquids in boilers, storage tanks, and other applications where temperature control is required. Totally enclosed Micro Switch™ snap-acting switches operate on temperature rise to setpoint. Visible control point scale and external adjustment screw permit easy setting. Horizontal or vertical insertion of the sensing element. Direct or well immersion of the sensing element. Adjustable Setpoint of 100 F to 240 F Adjustable differential 5 F to 30 F.



L4006A breaks the circuit on a temperature rise to the control setting. It is used for high limit or low limit control. When used as a controller or as a low limit, a separate high limit must be used.

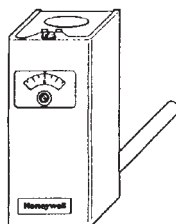
No.	Model No.	Each
HONL4006A1678	L6006C1018	\$147.30

Honeywell Fast Acting Aquastats Tradeline Replacements

Immersion Aquastat L6006A

ave liquid filled elements that react quickly to small temperature changes of the boiler water.

Best for the small modern boilers. Range 100° F to 240° F. Adj. differential 5 deg to 30 deg. Rated 8 Amp, 120 Volt. Has SPDT switch for low and high limit control. Supplied without well but with adapter to fill most wells.



No. 70411 Tradeline L6006A1145 replaces Old model L11601; -4, -5, -A, -B, L144-A; -B, L165-A, -B; L170-A, -B, L244A; L265A; L270; L416-1, -3, -4, -5, -A, -B; L444-A, -B; L844-A, -B; L4006-A, -B and L4006-A, -B, -C, -D.

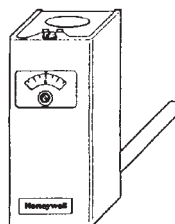
Model No. L6006A1145

No.	Description	Each
70411	SPDT Switch	\$155.68

High Limit; Manual Reset Aquastat Controller

For limiting or regulating temperature of liquids in boilers or tanks. Can also sense duct or outside air temperature.

High Limit; Manual Reset Aquastat Controller with 130 F to 270 F operating temperature and 66 in. capillary.

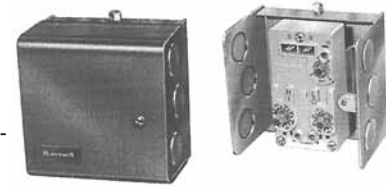


SPST, contacts break on temperature rise.

No.	Description	Each
HONL4008E1156	L4008E1156	\$203.92

High Limit Aquastat Relay L8148

Immersion-type controllers that combine high limit protection with switching relay control of burner and circulator motors. Adjustable Setpoint of 180 F to 250 F. Element length suitable for 1-1/2" or 3" Wells



Features:

- High limit opens burner circuit only.
- Include transformer and accessory terminals for adding a remote low limit controller.
- Case available for horizontal or vertical mounting.
- Requires a 24 Vac thermostat with heat anticipator set at 0.2A.
- TRADELINE models include well adapter, tube of heat conductive compound and range stops.

L8148E Replaces: L8148E1158, L8148E1182, L8148E1216, L8148E1065

No.	Model No.	Each
HONL8148E1265	L8148E1265	\$315.02

Pressuretrol PA404A

The PA404 is a series 40 (2-wire, SPST) pressuretrol controller for use in 24, 120, 240 or 277 volt control circuits or in self powered (millivoltage) applications.

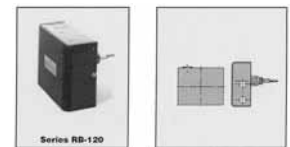


- The PA404A is a pressure actuated high limit, safety control for steam heating boilers; it breaks an electrical circuit to shut down the burner if steam pressure rises above a safe level.
- Each model contains an SPST Micro Switch
- Sensitive pressure-actuated diaphragm expands or contracts with pressure variations, moving a lever mechanism which operates the snap switch.
- A screw on top of the case allows set point adjustment without removing the cover.

No.	Model No.	Each
HONPA404A1033	PA404A1033	\$194.06

Low Water Cut-Off 120 Volt

- For residential and commercial applications
- Electro-mechanical operation
- Automatic reset feature resumes operation after a power outage when water is on probe
- Maximum Ambient Temperature: 125 F
- Maximum Water Pressure: 160 PSI



- Maximum Water Temperature: 250 F

Electrical Ratings	Power Consumption	Load Switching
120 VAC	15 VA	5.8 A at 120 VAC
No.	Description	Each
MMRB120	Low Water Cut-Off	\$285.36

Low Water Cut-Off 24 Volt

- For residential applications
- Easy to install wire
- Automatic reset feature resumes operation after a power outage when water is on probe
- Maximum Ambient Temperature: 120 F
- Maximum Water Temperature: 250 F
- Maximum Water Pressure: 50 PSI
- Compact size
- Electro-mechanical operation
- Green LED for Power operation after a power outage
- Red LED for Low Water



Electrical Ratings	Power Consumption	Load Switching
24 VAC	2.5 VA	2 A at 24 VAC
No.	Description	Each
MMRB24	Low Water Cut-Off	\$196.54