



Formerly A. O. Smith Electrical Products Company

Refrigeration® Motors 6600A



A Regal Brand

REGAL



Green Choice® Energy Efficient Motors for Refrigeration Applications



3-in-1™

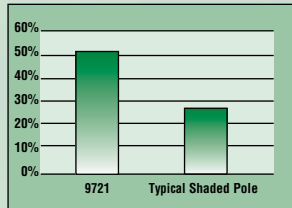
Replaces 1/12, 1/15, 1/20
PSC and Low Efficient
Shaded Pole Designs



ENERGY SAVING PSC DESIGN



50% More Efficient than Shaded Pole Motors



Direct Drop-in
Replacement for
Walk-In Cooler
Evaporator Fans

Less efficient shaded pole motors are often used in original equipment to cut costs. While they do allow some small savings in purchase price, the savings are quickly eaten up in electric bills at today's high power costs.

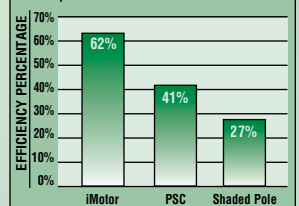
For More Details see page 9



Breakthrough Motor Design

Energy Savings ECM Design

Comparison of 9-Watt Motors @ 1550 RPM



Direct Drop-in
Replacement for
Supermarket Case
Evaporator Fans

The iMotor refrigeration motor uses less wattage to achieve the same airflow as a shaded pole motor, so it produces less heat. Fewer BTU's in the system means less work and wear for the compressor for even greater savings.

For More Details see pages 6-7

JuggerNaut®

When you need a
motor that can
handle the severe
demands that inverters
create, look no further
than JuggerNaut®



- UL and CSA recognized Class F insulation for 70°C (158°F) max ambient conditions provides longer motor life.
- Inverter Duty Rated to be Corona Free with conductive bearing grease for reliable use with today's inverters.
- Voltage Change Module (VCM)™ – Our own quick connect voltage change device makes voltage changes quick and easy.
- Easy to remove 56H rigid base provides maximum mounting versatility and reduces inventory.

For More Information see page 11

C Frame Motors

Direct Replacement Motors

Features:

- CSA Certified
- Fan Blades
- Mounting Hardware
- Single & Two-Speed
- Shaded Pole
- UL Recognize



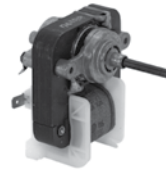
C-Frame motor fans sold separately.
See page 20.



Type A



Type B



Type C



Type D

Designed to replace many 3.3" diameter & "C" Frame Motors, used on commercial & domestic refrigeration applications, as well as exhaust fans, range hoods, heaters, ventilators, evaporators and many other air moving applications.

Stack Size	RPM/Speeds	Volts	Amps	Stock Number	Shaft Dia. and Length	Rotation	Motor Type	Gem	Industry Reference	Robertshaw	Acme	Notes
1/2"	3000/1	120	0.42	C01678	.187" X 1.50"	REV.	B	EM678	14015			
1/2"	3000/1550/2	120	0.65/.21	C01681	.187" X 1.36"	REV.	B	EM681	14021			52
5/8"	3000/1	120	0.30	C01677	.187" X 1.28"	REV.	B	EM677	14013			
5/8"	3000/1	120	0.40	C01670	.187" X 1.42"	REV.	A	EM670	14001		600/700/710	
5/8"	3000/1	120	0.40	C01671	.187" X 1.42"	REV.	B	EM671	14003			
5/8"	3000	120	0.45	C01700	.187" x 1.63"	CWSE	D				700	321,322,323
5/8"	3000/1	120	0.48	C01679	.217" X 1.38"	REV.	A	EM679	14017			
5/8"	3000/1550/2	120	0.71/0.34	C01673	.187" X 1.33"	REV.	A	EM673	14007			52
5/8"	3000/1	240	0.25	C01672	.187" X 1.48"	REV.	A	EM672	14005		602/702	6
7/8"	3000/1550/2	120	1.41/0.21	C01685	.187" X 1.58"	CWSE	B	EM685				52,224
1"	3000/1550/2	120	0.73/0.36	C01682	.187" X 1.29"	REV.	B	EM682	14023			52
1"	3000/1550/2	120	1.28/0.21	C01684	.217" X 2.00"	REV.	B	EM684				52,225
1"	3000/1	120/240	1.0/0.50	C01675	.187" X 2.07"	REV.	A	EM675			7502	219
1"	3000/1	240	0.30	C01683	.187" X 1.15"	REV.	B	EM683	14025			
1-1/8"	3000/1	120	0.70	C01680	.187" X 1.46"	REV.	B	EM680	14019		750	



Type D



Type E



Type F



Type G

120 VOLT, EVAPORATIVE FAN MOTORS

Stack Size	RPM/Speeds	Volts	Amps	Stock Number	Shaft Dia. and Length	Rotation	Motor Type	Gem	Industry Reference	Notes
1/2"	3000	120	.20	C01336	.125" x 1.30"	CWSE	F	EM336	For Gibson/Frigidaire	77
1/2"	3000	120	.30	C01334	.187" x 1.66"	CWSE	E	EM334	For Admiral	64
1/2"	3000	120	.31	C01332	.187" x 1.87"	CWSE	C	EM332	For Frigidaire	64
1/2"	3000	120	.39	C01333	.187" x 1.42"	CCWSE	C	EM333	For Frigidaire	64
1/2"	3000	120	.45	CRAN590	.181" x 1.0"	CWSE	E	3590	For Randall	1,64,176
5/8"	3000	115	.40	C01335	.187" x 1.67"	CWSE	D	EM335	For Admiral	64
3/4"	3000	120	.86	C01337	.187" x 2.00"	CCWSE	G	EM337	For Amana/Westinghouse	64

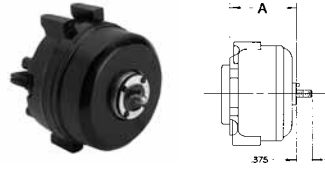
Notes:

- Item to be discontinued when stock is depleted
- 60/50 HZ
- Two-speed connection: white-common, red-low, black-high.
- Spade Connector 219. Dual voltage connection: black-common, white-120 volt, red-240 volt.
- Molex Plug
- Moisture Proof Stator
- Direct replacement for GE WB26X24, WB26X40 and WB26X45.
- Direct replacement for Gaffers & Sattler and Dyna Vent.
- Bohn/Heatcraft mounting hardware and OEM fan blade included.
- Mechanically reversible
- Kit includes three fans: 4 blade, 5.50 dia. CCW rot., 5 blade, 5.50 dia. CCW rot., 5 blade, 4.00 dia. CW rot.

Unit Bearing Fan Motors

Features:

- Aluminum & Cast Iron
- All Models Include Vibration Dampening Hub Washer, Speed Nut and 4 Mounting Screw
- Continuous Duty, Air Over
- Horizontal & Shaft Up Mounting Only
- 60/50 Hz
- Shaded Pole
- 115 & 230 Volt
- Totally Enclosed
- UL & CSA Recognized



CAST IRON - TWO MOUNTING FEET

Watts Output	RPM	Volts	Amps	Stock Number	Rotation	Rear Mounting Holes	"A" Dim.	Emerson No.	Notes
2	1550	115	0.22	UB02CWL2F	CWLE	3	2.52		
4	1550	115	0.29	UB04CWL2F	CWLE	3	2.52	2115	
4	1550	115	0.29	UB04CCL2F	CCWLE	3	2.52	2103	
4	1550	230	0.15	UB04CWH2F	CWLE	3	2.52	2123	
4	1550	230	0.15	UB04CCH2F	CCWLE	3	2.52	2122	
5	1550	115	0.34	UB05CWL2F	CWLE	3	2.52	2119	
6	1550	115	0.40	UB06CWL2F	CWLE	3	2.74	2117	
6	1550	115	0.36	UB06CCL2F	CCWLE	3	2.74	2116	
9	1550	115	0.55	UB09CWL2F	CWLE	3	2.74	2108	
9	1550	115	0.55	UB09CCL2F	CCWLE	3	2.74	2118	
9	1550	230	0.27	UB09CWH2F	CWLE	3	2.74	2110	
9	1550	230	0.27	UB09CCH2F	CCWLE	3	2.74	2109	
16	1550	115	1.0	UB16CWL12F	CWLE	3	3.11	2112	
16	1550	115	1.0	UB16CCL12F	CCWLE	3	3.11	2111	
16	1550	230	0.50	UB16CWH12F	CWLE	3	3.11	2114	
16	1550	230	0.50	UB16CCH12F	CCWLE	3	3.11	2113	

ALUMINUM - TWO MOUNTING FEET

Watts Output	RPM	Volts	Amps	Stock Number	Rotation	Rear Mounting Holes	"A" Dim.	Emerson No.	Notes
4	1550	115	0.29	UB04CWLA2F	CWLE	5	2.25	D554	
4	1550	115	0.29	UB04CCLA2F	CCWLE	5	2.25	D555	
5	1550	115	0.34	UB05CWLA2F	CWLE	5	2.25	D582	
5	1550	115	0.34	UB05CCLA2F	CCWLE	5	2.25	D583	
6	1550	115	0.40	UB06CWLA2F	CWLE	5	2.50	D558	
6	1550	115	0.40	UB06CCLA2F	CCWLE	5	2.50	D559	
9	1550	115	0.50	UB09CWLA2F	CWLE	5	2.50	D562	
9	1550	115	0.50	UB09CCLA2F	CCWLE	5	2.50	D563	
9	1550	230	0.25	UB09CWA2F	CWLE	5	2.50	D564	
9	1550	230	0.25	UB09CCHA2F	CCWLE	5	2.50	D565	

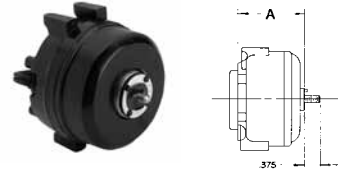
Notes:

See parts & accessories on page 20

Unit Bearing Fan Motors

Features:

- Aluminum & Cast Iron
- All Models Include Vibration Dampening Hub Washer, Speed Nut and 4 Mounting Screw
- Continuous Duty, Air Over
- Horizontal & Shaft Up Mounting Only
- 60/50 Hz
- Shaded Pole
- 115 & 230 Volt
- Totally Enclosed
- UL & CSA Recognized



CAST IRON - ONE MOUNTING FOOT

Watts Output	RPM	Volts	Amps	Stock Number	Rotation	Rear Mounting Holes	"A" Dim.	GE No.	Notes
2	1550	115	0.22	UB02CWL	CWLE	3	2.39		
2.5	1550	115	0.26	UB025CWL	CWLE	3	2.39	5111	
4	1550	115	0.29	UB04CWL	CWLE	3	2.39	5211	
4	1550	115	0.29	UB04CCL	CCWLE	3	2.39	5212	
4	1550	230	0.15	UB04CWH	CWLE	3	2.39	5221	
4	1550	230	0.15	UB04CCH	CCWLE	3	2.39	5222	
6	1550	115	0.40	UB06CWL	CWLE	3	2.93	5311	
6	1550	115	0.40	UB06CCL	CCWLE	3	2.93	5312	
9	1550	115	0.55	UB09CWL	CWLE	3	2.93	5411	
9	1550	115	0.55	UB09CCL	CCWLE	3	2.93	5412	
9	1550	230	0.27	UB09CWH	CWLE	3	2.93	5421	
9	1550	230	0.27	UB09CCH	CCWLE	3	2.93	5422	
16	1550	115	1.0	UB16CWL1	CWLE	3	3.19	5811	
16	1550	115	1.0	UB16CCL1	CCWLE	3	3.19	5812	
16	1550	230	0.50	UB16CWH1	CWLE	3	3.19	5821	
16	1550	230	0.50	UB16CCH1	CCWLE	3	3.19	5822	

ALUMINUM - ONE MOUNTING FOOT

Watts Output	RPM	Volts	Amps	Stock Number	Rotation	Rear Mounting Holes	"A" Dim.	GE No.	Notes
2	1550	115	0.22	UB02CWLA	CWLE	3	2.47	5109	161
2.3	1550	115	0.25	UB023CWLA	CWLE	3	2.47		161
4	1550	115	0.29	UB04CWLA	CWLE	3	2.47	5213	
4	1550	115	0.29	UB04CCLA	CCWLE	3	2.47	5214	
4	1550	230	0.15	UB04CWH1	CWLE	3	2.47	5223	
4	1550	230	0.15	UB04CCHA	CCWLE	3	2.47	5224	
6	1550	115	0.40	UB06CWLA	CWLE	3	2.91	5313	
6	1550	115	0.40	UB06CCLA	CCWLE	3	2.91	5314	
9	1550	115	0.50	UB09CWLA	CWLE	3	2.91	5413	
9	1550	115	0.50	UB09CCLA	CCWLE	3	2.91	5414	
9	1550	230	0.25	UB09CWH1	CWLE	3	2.91	5423	
9	1550	230	0.25	UB09CCHA	CCWLE	3	2.91	5424	
16	1550	115	1.0	UB16CWLA	CWLE	3	3.19	5813	
16	1550	115	1.0	UB16CCLA	CCWLE	3	3.19	5814	
16	1550	230	0.50	UB16CWH1	CWLE	3	3.19	5823	

Notes:

161. No side bosses
See parts & accessories on page 20

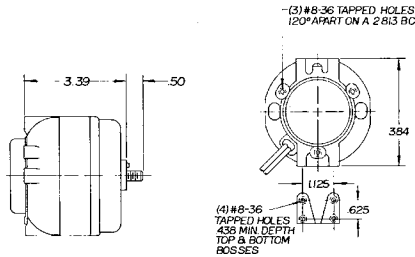
Unit Bearing Motors

Manufactured by Electric Motors & Specialties 

16-25-35 WATT (1/50 to 1/20 HP)

Features:

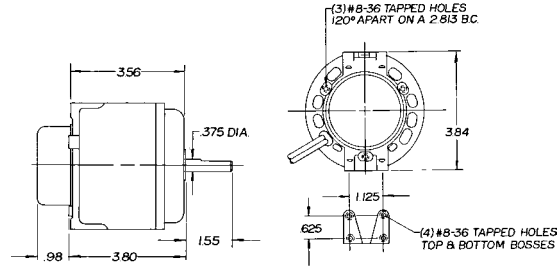
- High Efficiency
- Cast Iron
- Fan Motors
- Horizontal and Shaft Up mounting only



50-75 WATT (1/15 HP)

Features:

- High Efficiency
- Cast Iron
- Fan Motors



Watt Output	RPM	Volts	Amps	Stock Number	Shaft Diameter & Length	Rotation	EMS Number	OEM Part Number	Notes
15	1500	115	.60	277	5/16 x 7	CCWLE	ESPOL15EMJR11	24-0366	3
15	1500	115	.60	292	5/16 x 5	CCWLE	ESP-L15EMJR1B2		
15	1500	115	.60	293	5/16 x 7THD	CCWLE	ESP-L15EMJR1B1		6
15	1500	115	.60	295	5/16 x 7	CCWLE	ESP-L15EMJR1B3		
15	1500	115	.60	296	5/16 x 9	CCWLE	ESP-L15EMJR17		69
16	1500	115	.80	246	1/4 x 20THD	CWLE	ESPL16EM1		
16	1500	115	.80	247	1/4 x 20THD	CCWLE	ESPL16EMR1		
16	1500	230	.40	248	1/4 x 20THD	CWLE	ESPL16EM2		
16	1500	230	.40	249	1/4 x 20THD	CCWLE	ESPL16EMR2		
25	1500	115	1.1	297	5/16 x 7	CCWLE	ESPL25MJR1B1		69
25	1500	115	1.1	299	8-1/8 x 5/16 x 1/2	CCWLE	ESPOL25MVRD12		1
25	1500	115	1.1	250	1/4 x 20THD	CWLE	ESPL25EM1		
25	1500	115	1.1	251	1/4 x 20THD	CCWLE	ESPL25EMR1		
25	1500	230	.60	252	1/4 x 20THD	CWLE	ESPL25EM2		
25	1500	230	.60	253	1/4 x 20THD	CCWLE	ESPL25EMR2		
35	1500	115	1.4	254	1/4 x 20THD	CWLE	ESPL35EM1	810M035A29	
35	1500	115	1.4	255	1/4 x 20THD	CCWLE	ESPL35EMR1		
35	1500	230	.70	256	1/4 x 20THD	CWLE	ESPL35EM2	810M035A21 & A28	
35	1500	230	.70	257	1/4 x 20THD	CCWLE	ESPL35EMR2		
50	1500	115	1.7	258	3/8 x 1-1/2	CWLE	ESPOL50EM1	050-0244-01	
50	1500	115	1.7	291	5/16 x 3	CWLE	ESPOL50EM1B1	134350000	
50	1500	115	1.7	259	3/8 x 1-1/2	CCWLE	ESPOL50EMR1		6
50	1500	115	1.7	289	3/8 x 1-1/2	CWLE	ESPOL50EM13	998-1008-00	3,187
50	1500	230	.85	260	3/8 x 1-1/2	CWLE	ESPOL50EM2	050-0244-00	6
50	1500	208-230	1.2	9200	3/8 x 1-1/4	CWLE	ESPOL60EM2		
50	1500	230	.85	261	3/8 x 1-1/2	CCWLE	ESPOL50EMR2		6
50	1500	230	.85	276	5/16 x 2-1/2	CCWLE	ESPOL50EMJR21	810M050A62	3
50	1500	230	.85	285	5/16 x 1-1/2	CWLE	ESPOL50EM2B		3
50	1500	230	.85	288	3/8 x 1-1/2	CWLE	ESPOL50EM26	998-1007-00	3,187
50	1500	460	.44	290	3/8 x 1-1/2	CWLE	ESPOL50EM461	050-0244-02	
75	1500	230	1.5	298	3/8 x 1-1/2	CWLE	ESPOL75EM2		

Notes:

- Item to be discontinued when stock is depleted
 - Special OEM Replacement Motor (See Page 12-19)
 - 60/50 HZ
 69. Pin Hole
 187. Includes Mounting Bracket and Shaft Bushing
- See parts & accessories on page 20

Manufactured by Electric Motors & Specialties 

Direct Drive Fan Motors 4 Lug

Features:

- Ball Bearing
- Continuous Air Over
- Capacitor Included
- Shaded Pole & PSC
- 4 Lug
- 5-1/4" Diameter
- 6-Pole — 1050 RPM
- 60 Hz

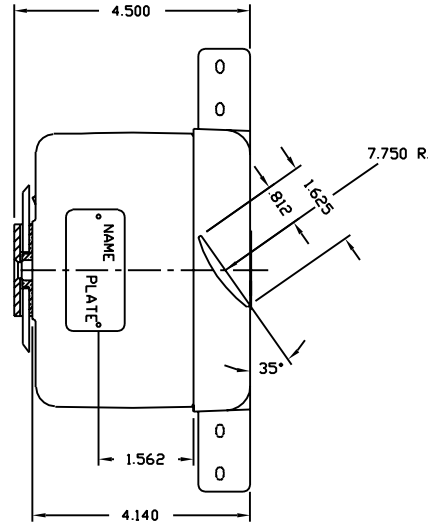
Replacement:

- Stk 264 - Replaces Janitrol JD65F30
- Stk 270 - Replaces Janitrol J65F30 & B65F30
- Stk 265 - Replaces Janitrol J93F41
- Stk 286 - Replaces Janitrol B13400227
- Stk 267 - Replaces Manitowoc 002412313
- Stk 268 - Replaces S60HUB2, Janitrol JA65F30 and Luxaire 20-0189



HP	RPM	Volts	Amps	Stock No.	Rotation*	Capacitor	EMS No.	Notes
1/15	1050	115	2.0	262	CCW	Shaded Pole	ESP60BCU4K7-C1	
1/10	1050	115	2.4	263	CCW	Shaded Pole	ESP60BCU4K8-C1	
1/8	1050	230	1.5	264	CCW	Shaded Pole	ESP60BHU4K3-C1	
1/8	1050	230	1.5	265	CW	Shaded Pole	ESP60BHG4K3R-C1	
1/6	1050	230	1.3	267	CCW	2MFD-440V	S60BHU4L6-C2	
1/5	1050	115	3.5	269	CCW	10MFD-370V	S60BCU4L1-C1	
1/5	1050	230	1.4	268	CCW	2.5MFD-440V	S60BHU4L9-C1	
1/5	1050	230	1.8	270	CCW	3MFD-440V	S60BHU4L3-C1	
1/5	1050	230	1.4	286	CW	2.5MFD-440V	S60BHG4L9R-C1	

Notes:



ECM Unit Bearing Motor

Manufactured by Electric Motors & Specialties 

New Design!
For Evaporator &
Condenser Application

**“Breakthrough Motor Design Offers Huge Energy Savings
For The Refrigeration Market”**

Stock No. 9207F2

iMotor®

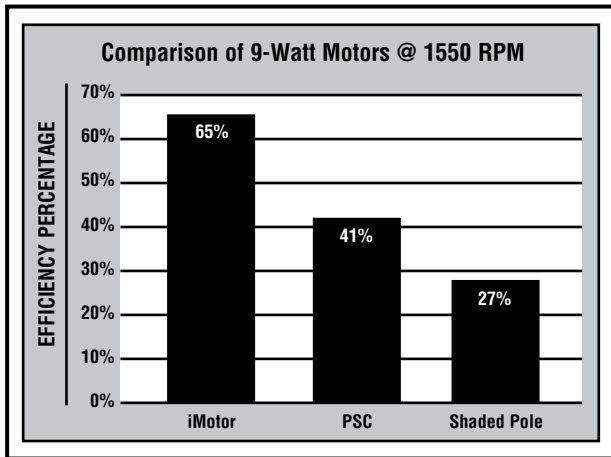


Direct Drop-in
Replacement for
supermarket case
evaporator fans
and condenser units.



9 WATT
Replaces 6, 9
& 12 watt
PSC & low efficiency
shaded pole motors

(Energy Savings ECM Design)



Features:

- ✓ Advanced ECM Design
- ✓ Rain Shield
- ✓ Cast Iron
- ✓ 15" Leads
- ✓ Lyall Plug
- ✓ UL/CUL Approved E128044
- ✓ Up to 65% Efficiency
- ✓ Wide temperature range oil for use in evaporators and condensers
- ✓ Tapped & Drilled Mounting Holes
 - Evaporator Mount
 - Standard 3-hole
 - Hussmann 4-hole style
 - Condenser Mount-Double Boss



Stock No.	Watts	Volts	Amps	ROT OSE	RPM
9207F2	6, 9, 12	115	.20 - .30	CW	1550

See parts & accessories on page 20

Manufactured by Electric Motors & Specialties 

New Design!
For Evaporator &
Condenser Application

**“Breakthrough Motor Design Offers Huge Energy Savings
For The Refrigeration Market”**

Stock No. 9208F2

iMotor®



Direct Drop-in
Replacement for
supermarket case
evaporator fans
and condenser units.



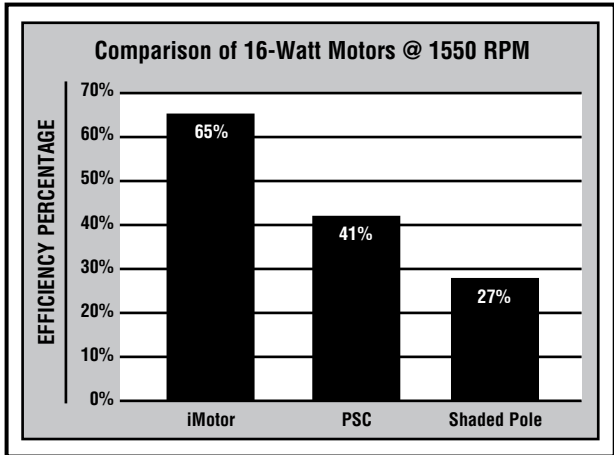
16 WATT
Replaces 14,
15 & 16 watt
PSC & low efficiency
shaded pole motors

Features:

- ✓ Advanced ECM Design
- ✓ Rain Shield
- ✓ Cast Iron
- ✓ 15” Leads
- ✓ Lyall Plug
- ✓ UL/CUL Approved E128044
- ✓ Up to 65% Efficiency
- ✓ Wide temperature range oil for use in evaporators and condensers
- ✓ Tapped & Drilled Mounting Holes
 - Evaporator Mount
Standard 3-hole
Hussmann 4-hole style
 - Condenser Mount-Double Boss



(Energy Savings ECM Design)



Stock No.	Watts	Volts	Amps	ROT OSE	RPM
9208F2	14, 15, 16	115	.47 - .58	CW	1550

See parts & accessories on page 20

GE 11 Frame Replacements

3-3/8" Diameter Motors

Features:

- All Angle Sleeve Bearing
- Insulation Class B
- Open Fan Cooled
- Shaded Pole
- Single Speed
- Thermally Protected
- UL, CSA Approved
- 1-3/4" Resilient Rings (except 981 9336, and 9439)
- 2.84 B.C. 8-32 Tapped Holes for Shaft End Mounting
- 40°C Ambient



671B, 672B, 9653,
9654, 9655, 9656,
9657, 9658, 9659,
9660, 9661, 9662,
9664, 9665



9663



981
(Tecumseh)



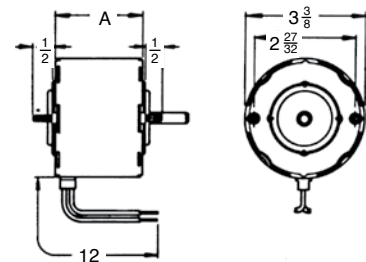
9336

HP	RPM	Volts	Amps	Stock Number	Shaft Diameter & Length	Rotation Opposite Shaft End	Ring to Ring Dimension	Industry Number	Notes
1/40	1550	115	1.2	9656	5/16 x 1-1/4	CW	4-1/2	1531	184
1/40	1550	115	1.2	9657	5/16 x 1-1/4	CCW	4-1/2	1541	184
1/40	1550	208-230	0.6	9658	5/16 x 1-1/4	CW	4-1/2	1532	184
1/40	1550	208-230	0.6	9659	5/16 x 1-1/4	CCW	4-1/2	1542	184
1/30	1550	115	1.6	9653	5/16 x 1-1/4	CW	4-5/8	1431	184
1/30	1550	208-230	0.8	9654	5/16 x 1/14	CW	4-5/8	1432	184
1/30	1550	208-230	0.8	9655	5/16 x 1-1/4	CCW	4-5/8	1442	184
1/20	1550	115	2.0	9660	5/16 x 2	CW	4-3/4	1331	184
1/20	1550	115	2.0	9661	5/16 x 2	CCW	4-3/4	1341	184
1/20	1550	208-230	1.0	9662	5/16 x 2	CCW	4-3/4	1342	184
1/20	1550	208-230	1.0	9663	5/16 x 1-1/4	CW	4-1/2	1016	75,184
1/20	1550	208-230	1.0	9664	5/16 x 2	CW	4-3/4	1332	184
1/20	1550	230	1.1	9336	5/16 x 2-5/8	CW	4-7/8		2,75,150,184,331
1/15	1550	208-230	1.1/1.0	9665	5/16 x 1-1/4	CW	4-3/4	1232	150,184
1/15	1550	115/208-230	2.1/1.1	671B	5/16 x 2	CW	4-7/8	1231	2,184
1/15	1550	115/208-230	2.1/1.1	672B	5/16 x 2	CCW	4-7/8	1441	2,184
1/15	1550	460	0.6	981	5/16 x 2-1/2	CW	4-1/4		3,184,331

Notes:

- 2. Ball bearing
- 3. Special OEM replacement motor (see page 18)
- 75. Mounting Rings not included
- 150. Rated 60/50 Hz
- 184. Lead exit is on shaft end
- 331. Cannot be mounted with rings – ring to ring dimension is body length

Stock No. 2064A
8-32 x 3/4"
(8 screws per pack)
Sold Separately



3-3/8" Diameter Motor

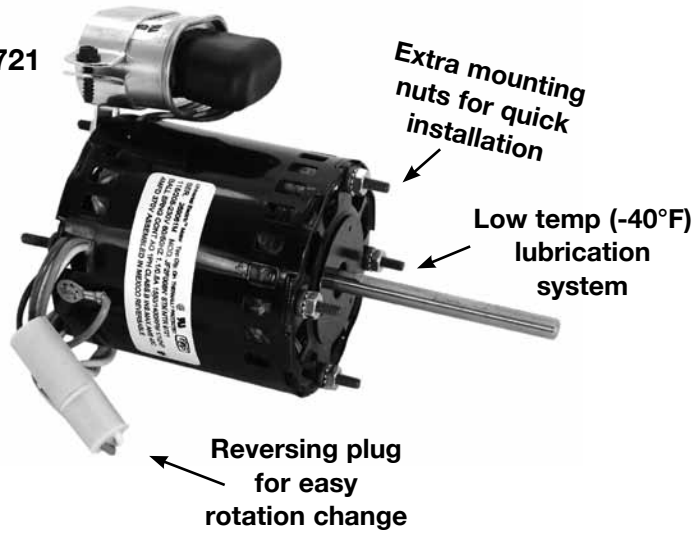
**HEATCRAFT REPLACEMENT MOTORS
BOHN, CHANDLER, CLIMATE CONTROL AND LARKIN**



Stock No. 9721



3-in-1™
Replaces 1/12, 1/15, 1/20
PSC and Low Efficient
Shaded Pole Designs

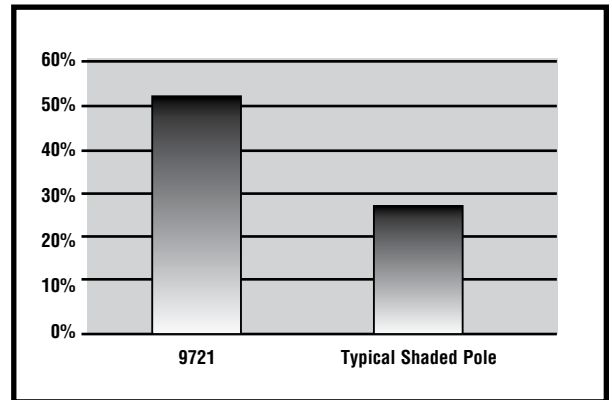


**ENERGY
SAVINGS
PSC
DESIGN**

*Direct Drop-In Replacement for Walk-In Cooler Evaporator Fans

Use of a permanent split capacitor design allows the motor to deliver more power with a lower amp draw. Cooler operation results in fewer failures. Ball bearings provide smooth, quiet operation and extended motor life.

50% More Efficient than Shaded Pole Motors



Features:

- ✓ Easy-to-Read Connection Diagram Attached to White Lead Wire
- ✓ Now! Four Studs on Each End
- ✓ 40°C Ambient
- ✓ Class B Insulation
- ✓ UL and CSA Recognized

\$ Less efficient shaded pole motors are often used in original equipment to cut costs. While they do allow some small savings in purchase price, the savings are quickly eaten up in electric bills at today's high power costs.

Stock No.	HP	Volts	Amps	RPM	Speeds	Frame	SF	HZ	Rotation	Wt.
9721•\$	1/12, 1/15, 1/20	115/208-230	1.1/0.5	1550	1	3.3"	1.0	60/50	Rev.	4.75

Notes:
• Ball Bearing
\$ Energy Efficient

21/29 Frame Replacements

Refrigeration – Unit Heaters – Space Heaters 5” Diameter Motors – Mechanically Reversible

Features:

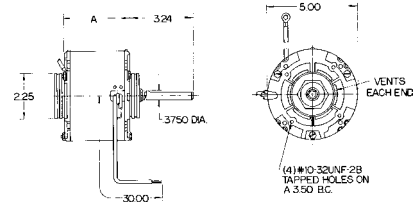
- Air Conditioners
- Base Mounting Available
- Commercial Condenser Units
- Continuous Duty, Air Over
- Designed for Easy Mechanical Reversing
- Drain Holes
- Extra Long 30” Leads
- Fits G.E. Base
- Mounting Rings Included
- Lead Exit on Shaft End
- For 1/2” Shaft Applications use Stock No. 1306 Shaft Bushing
- Holes Provided for Conduit Connector
- Refrigeration Cabinets
- Replaces Most GE 21/29 Frame Motors
- Replaces Universal Stock 401-406
- Shaded Pole
- Sleeve Bearing



**STOCK NO. 2087A
MOUNTING STUDS**
10-32 X 1”
4 per set
(available separately)



- Thermally Protected
- Unit Cooler Fans & Blowers
- Unit Heaters
- 2-1/4” Mounting Rings Included
- 4 Tapped 10-32 Holes for Shaft End Mounting
- 60 Hz

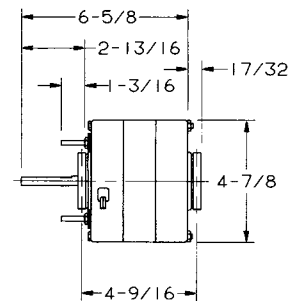


HP	RPM	Speeds	Volts	Amps	Stock Number	Shaft Dia. & Length	Rotation	“A” Dim.	Cross Reference	Base Number	Notes
1/20	1050	1	115/230	2.8/1.4	604	3/8 x 3-1/4	CWSE	4-1/4	2321 & 2322	1207	103
1/20	1550	1	115/230	2.4/1.2	610	3/8 x 3-1/4	CWSE	4-1/4	2341 & 2342	1207	103
1/20	1550	1	115/230	2.4/1.2	611	3/8 x 3-1/4	CCWSE	4-1/4	2331 & 2332	1207	103
1/15	1550	1	115/230	3.8/1.9	606	3/8 x 3-1/4	CWSE	4-1/2	2223		103
1/15	1550	1	115/208-230	2.8/1.4	612A	3/8 x 3-1/4	CWSE	4-1/2	2223		103
1/15	1550	1	115/208-230	2.8/1.4	613A	3/8 x 3-1/4	CCWSE	4-1/2	2231 & 2232		103
1/12	1050	1	115	1.8	9667	3/8 x 2	REV.	5-3/4	2928		6,70,118
1/12	1050	1	208-230	0.61	9669	3/8 x 2	REV.	5-3/4	2954		6,70,118
1/12	1550	1	115	1.6	9666	3/8 x 2	REV.	5-3/4	2927		6,70,118
1/12	1550	1	208-230	0.65	9668	3/8 x 2	REV.	5-3/4	2953		6,70,118
1/10	1050	1	115/230	4.6/2.3	608	3/8 x 3-1/4	CWSE	4-3/4	2121 & 2122	2089	103
1/10	1050	1	115/230	4.6/2.3	609	3/8 x 3-1/4	CCWSE	4-3/4	2113	2089	103
1/10	1550	1	115/230	4.4/2.2	614	3/8 x 3-1/4	CWSE	4-3/4	2141 & 2142	2089	103
1/10	1550	1	115/230	4.4/2.2	615	3/8 x 3-1/4	CCWSE	4-3/4	2131 & 2132	2089	103

Used on many popular commercial condensing units (Copeland, Tecumseh, Hussmann, Tyler, etc.) as well as unit cooler fans and blowers, refrigeration cabinets; also used on unit heaters, space heaters, remote air conditioners, blower units and other air moving applications. 4 ratings replace 21 of G.E.’s 21/29 frame designs.

Features:

- All angle sleeve bearings
- Auto protector
- Base and mounting clamps included
- Grommeted lead exit
- Mounting rings included
- Mechanically reversible in the field
- Open enclosure
- Shaded pole
- UL and C.S.A. approved
- Lead exit on shaft end
- 3/8” shaft diameter, 1/2” adapter
- 2-1/4” rubber rings; base mounting
- 30” color coded leads
- 42 Frame (5.0” Dia.)
- 60 HZ



4 mounting bolts 3-1/2 dia. B.C.
(Mounting Washers and Nuts Included)

HP	RPM	Voltage	Amps	Frame	Stock Number	Rotation	Notes
1/10	1050	115/208-230	4.0/2.0	42Y	RF6402	CWSE	6,154
1/10	1050	115/208-230	4.0/2.0	42Y	RF6403	CCWSE	6,154
1/10	1550	115/208-230	4.0/2.0	42Y	RF4400	CWSE	6,154
1/10	1550	115/208-230	4.0/2.0	42Y	RF4401	CCWSE	6,154

Notes:

- 6. 60/50 HZ
 - 70. Permanent Split Capacitor
 - 103. When using U.E. Base, add (2) 1221A Adapter Rings to EACH Mounting Ring
 - 118. TEAO
 - 154. Previous stock numbers with “X” suffix are the same as current models
- Also see page 8 for G.E. 11 Frame Replacements

6-1/2" Diameter Motors – Vertical Condenser Fan

JuggerNaut®



Features:

- Inverter Duty
- Removable 56H Rigid Base
- VCM™ – Voltage Change Module
- Class F Moisture Resistant Insulation
- Automatic Overload Protector
- Large Water Slinger
- Double Sealed Ball Bearings
- Positioning Lugs for Easy Belly-Band Mounting
- Shaft Up Mounting
- Quick Connect Design
- Extra Mounting Nuts
- Energy-Efficient Three Phase Design
- Conductive Bearing Grease for Inverter Applications
- 60/50 Hertz
- Three Phase
- Continuous Duty, Air Over

When you need a motor that can handle the severe demands that inverters create, look no further than JuggerNaut®

- UL and CSA recognized Class F insulation for 70°C (158°F) max ambient conditions provides longer motor life.
- Inverter Duty Rated to be Corona Free with conductive bearing grease for reliable use with today's inverters.
- Voltage Change Module (VCM)™ – Our own quick connect voltage change device makes voltage changes quick and easy.
- Easy to remove 56H rigid base provides maximum mounting versatility and reduces inventory.
- JuggerNaut condenser fan motors are available in 1 HP, 1.5 HP and 2 HP at 1140 RPM and 1 HP at 850 RPM. All are three phase and 208-230/460 volt.



H1050

Many retailers are now retrofitting inverters to their existing A/C and refrigeration equipment to save energy, only to discover that the OEM motors do not hold up to the strain that inverters place on them.
–JuggerNaut Inverter Duty motors are the solution!

Class F Insulation - 70°C (158°F) Max Ambient

Stock No.	HP	Volts	Amps	RPM	Speeds	Frame Size	Rotation	Type	Bearings	"C" Dim.	Shaft	Wt. (lbs)
H1050	1.0	460/208-230	2.2/4.0-4.4	1140	1	56H	Reversible	Three Phase	Ball	16.63	5/8" x 6.0"	29
H1051	1.5	460/208-230	2.9/5.8-5.8	1140	1	56H	Reversible	Three Phase	Ball	17.63	5/8" x 6.0"	38
H1052	2.0	460/208-230	3.7/7.0-7.4	1140	1	56H	Reversible	Three Phase	Ball	18.63	5/8" x 6.0"	45
H1053	1.0	460/208-230	2.6/5.0-5.2	850	1	56H	Reversible	Three Phase	Ball	18.63	5/8" x 6.0"	45
H1054	1.5	460/208-230	3.6/6.7-7.2	850	1	56H	Reversible	Three Phase	Ball	19.13	5/8" x 6.0"	50

Note: It is the responsibility of the installer to properly adjust the drive to the motor for the specific application. The correct volts/Hz settings are application specific and unique to each motor. Failure to perform proper set up can lead to substandard performance and /or premature failure of the system components.

O.E.M. - Direct Replacement

Bally



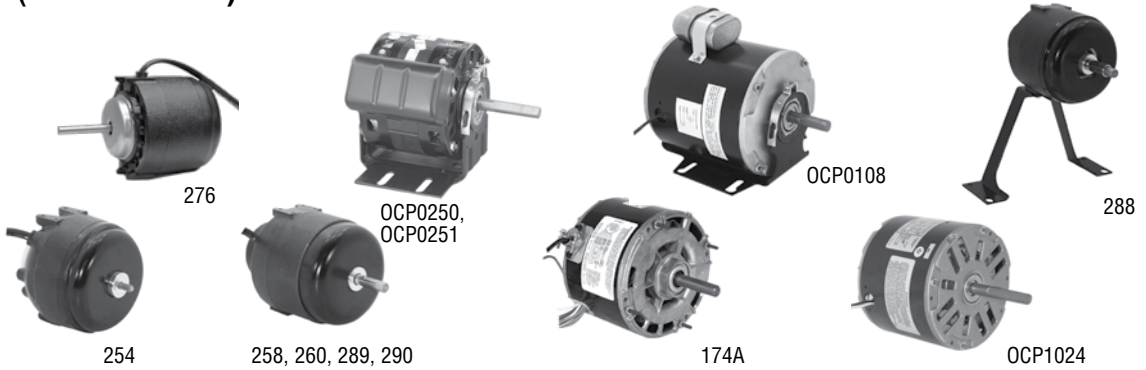
285

Watt Output	RPM	Speeds	Volts	Amps	Stock Number	Rotation	Capacitor	Shaft Dia. & Length	Motor Dia.	"A" Dim.	Cross Reference	Notes
50	1500	1	230	.85	285	CWLE	Shaded Pole	5/16 x 1-1/2	3-7/8"	3.77	ESPOL50EM2B	

Bohn (see Heatcraft)

Chandler (see Heatcraft)

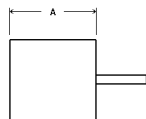
Climate Control (see Heatcraft)



Copeland

HP	RPM	Speeds	Volts	Amps	Stock Number	Rotation	Capacitor	Shaft Dia. & Length	Motor Dia.	"A" Dim.	Cross Reference	Notes
35W	1500	1	115	1.4	254	CWLE	Shaded Pole	1/4"-20 THD.	3-7/8"	3.39	050-0267-0	
50W	1500	1	115	1.7	258	CWLE	Shaded Pole	3/8 x 1-1/2	3-7/8"	3.78	050-0244-01	
50W	1500	1	230	.85	260	CWLE	Shaded Pole	3/8 x 1-1/2	3-7/8"	3.78	050-0244-00	
50W	1500	1	115	1.7	289	CWLE	Shaded Pole	3/8 x 1-1/2	3-7/8"	3.78	998-1008-00	
50W	1500	1	230	.85	288	CWLE	Shaded Pole	3/8 x 1-1/2	3-7/8"	3.78	050-0244-00	
50W	1500	1	230	.85	276	CCWLE	Shaded Pole	5/16 x 2-1/2	3-7/8"	3.75	050-0264-0	
50W	1500	1	460	.44	290	CWLE	Shaded Pole	3/8 x 1-1/2	3-7/8"	3.63	050-0244-02	
1/6	1625	1	208-230	1.0	174A	REV	5MFD-370V	1/2" x 2-1/2"	5-5/8"	4"	S3051	
1/6	1400/1625	1	230	1.5	OCP0251	CWLE	INCLUDED	1/2" x 2-1/2"	5"	3-7/8"	322P913 050-0251-00 6128	6
1/4	1625	1	208-230	1.5	OCP1024	CWLE	5MFD/370V	1/2" x 3"	5-5/8"	4-9/16"	3047 D783 K6124	
1/4	1400/1625	1	230	1.5	OCP0250	CWLE	INCLUDED	1/2" x 2-1/2"	5"	3-7/8"	322P914 050-0250-00 6129	6
1/3	1625	1	208-230	2.6	OCP0108	CWLE	INCLUDED	1/2" x 2-1/4"	5-5/8"	5-3/4"	050-0108-00 050-0018-00 3124, 6127	2

Notes:
2. Ball Bearing
6. 60/50 HZ



Crystal Tips



246

HP	RPM	Speeds	Volts	Amps	Stock Number	Rotation	Capacitor	Shaft Diameter & Length	Motor Dia.	"A" Dim.	Cross Reference	Notes
1/16W	1550	1	115	.80	246	CWLE	Shaded Pole	1/4"-20 THD.	3-7/8"	3.39	879-386857	

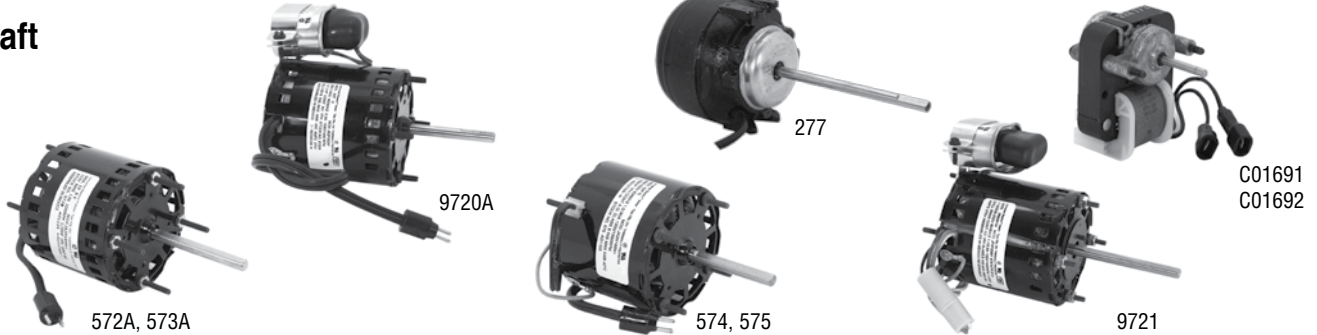
Foster, Vulcan-Hart



683

HP	RPM	Speeds	Volts	Amps	Stock Number	Rotation	Capacitor	Shaft Diameter & Length	Motor Dia.	"A" Dim.	Cross Reference	Notes
1/75	1650	1	115	.50	683	CCWLE	Shaded Pole	1/4"-20 THD	3-3/8"	2"	R10CW68M, ME	

Heatcraft



Stack Size	RPM	Volts	Amps	Stock Number	Rotation	Stand-Offs	Shaft Dia. & Length	Bohn	Industry Reference Gem	Uppco
5/8"	3000	120	0.80	C01691	CWSE	5036F & 5018S	.18 x 1.8	5007S	EM691	85
5/8"	3000	240	0.32	C01692	CWSE	5036G & 5018T	.18 x 1.8	5007T	EM692	86

HP	RPM	Speeds	Volts	Amps	Stock Number	Rotation	Capacitor	Shaft Diameter & Length	Motor Dia.	"A" Dim.	Cross Reference	Notes
1/15W	1500	1	115	.60	277	CCWLE	Shaded Pole	5/16" x 7"	3-7/8"	3.32"	24-0366	
1/20	1550	1	115	1.9	572A	CCWLE	Shaded Pole	5/16" x 3"	3-3/8"	3"	5034LS, 5008SS	4
1/20	1550	1	115	1.6	574	CWLE	Shaded Pole	5/16" x 2-5/8"	3-3/8"	2-3/4"	253-1194	4,6
1/20	1550	1	208-230	.90	575	CWLE	Shaded Pole	5/16" x 2-5/8"	3-3/8"	2-3/4"	253-1195	4,6
1/15	1550	1	208-230	1.3	573A	CCWLE	Shaded Pole	5/16" x 3"	3-3/8"	3-5/8"	5034MS, 5008TS	4
1/12	1550	1	208-230	0.5	9720A	CWLE	INCLUDED	5/16" x 2-5/8"	3-3/8"	3-5/8"	D1125, 7190-0442, 7190-2084, 9656, 7071061, 25309101	4,6
1/12	1550	1	115/208-230	1.1/0.5	9721	REV	INCLUDED	5/16" x 2-5/8"	3-3/8"	3-5/8"	25308601, 25309101, 2531194, 2531195, 7071061	2,6,9

Notes:

- 2. Ball bearing
- 4. Supplied with Lead and Plug Assembly
- 6. 60/50 HZ
- 9. Reversing plug



Continued on next page

O.E.M. - Direct Replacement

Heatcraft (Continued)



HP	RPM	Speeds	Volts	Amps	Stock Number	Rotation	Capacitor	Shaft Diameter & Length	Motor Dia.	"A" Dim.	Cross Reference	Notes
1/2	1075	1	208-230	4.2	992A	REV	7.5MFD-370V	1/2" x 2-3/4"	5-5/8"	7"	GE5KCP39PGH728T JOHNSTONE S88-667 SCS05001H-CPM120-3 FASCO D863	2

Hill Refrigeration



HP	RPM	Speeds	Volts	Amps	Stock Number	Rot.	Capacitor	Shaft Diameter & Length	Motor Dia.	"A" Dim.	Cross Reference	Notes
5W	1550	1	115	.34	UB05CWL2F	CWLE	Shaded Pole	1/4"-20 THD.	3-1/2"	2.50"	PP7577M	
1/3	1625	1	208-230	3.0	160A	REV	INCLUDED	1/2" x 4"	5-5/8"	4-5/8"		
1	1075	1	208-230	7.1/6.4	OHR1106	REV	15MFD/370V	1/2" x 3-3/4"	5-5/8"	5-1/2"		2,9,242

Hussmann



HP	RPM	Speeds	Volts	Amps	Stock Number	Rot.	Capacitor	Shaft Diameter & Length	Motor Dia.	"A" Dim.	Cross Reference	Notes
1/8	1550	1	230	1.0	OHS1004	CWLE	5MFD-370V	1/2" x 2"	5-5/8"	3-3/4"	3011 5KSP39DG2221S 5KSP39DG4220AS	
1/6	1625	1	208-230	1.0	174A	REV	5MFD-370V	1/2" x 2-1/2"	5-5/8"	4"	S3057	
1/5	1075	1	230	1.6	OHS1016	CWLE	INCLUDED	1/2" x 3"	5-5/8"	4-1/4"	3009 5KCP39GG3611AS D805	
1/5	1075	1	208-230	1.3	OHS10206	CWLE	INCLUDED	1/2" x 3"	5-5/8"	4-1/8"	1648 K55CLN1782 K55HXKWA8573 3008, 3012 5KCP39GG5606S 5KCP39GG765S 5KCP39GGC052T 5KCP39GN765 5KSP39GGA967T P011-96203	2
1/2	1725	1	208-230	2.7	OHS9983	CWLE	INCLUDED	1/2" x 3-1/2"	5-5/8"	5-1/8"	0644 644, K644 K055SME164467 K55HXCTP9963 K55XSME-1644 D890, 259983	2,6

Notes: 2. Ball Bearing 6. 60/50 HZ 9. Reversing Plug 242. BX Connector

ICE-O-MATIC



246, 254, 256



260

Watt Output	RPM	Speeds	Volts	Amps	Stock Number	Rotation	Capacitor	Shaft Diameter & Length	Motor Dia.	"A" Dim.	Cross Reference	Notes
16W	1500	1	115	.80	246	CWLE	Shaded Pole	1/4"-20 THD.	3-7/8"	3.39	9161045-04	
35W	1500	1	115	1.4	254	CWLE	Shaded Pole	1/4"-20 THD.	3-7/8"	3.39	9161078-01	
35W	1500	1	230	.70	256	CWLE	Shaded Pole	1/4"-20 THD.	3-7/8"	3.39	9161078-03 309316-000	
50W	1500	1	230	.85	260	CWLE	Shaded Pole	3/8 x 1-1/2	3-7/8"	3.78	319357-000	

IMI Cornelius



293



297



256



260, 291

Watt Output	RPM	Speeds	Volts	Amps	Stock Number	Rotation	Capacitor	Shaft Diameter & Length	Motor Dia.	"A" Dim.	Cross Reference	Notes
15W	1500	1	115	.60	293	CCWLE	Shaded Pole	5/16"-7" THD.	3-7/8"	3.17	31-0472 30-9369	
25W	1500	1	115	1.1	297	CCWLE	Shaded Pole	5/16" x 7	3-7/8"	3.17	31-0154	69
35W	1500	1	230	.70	256	CWLE	Shaded Pole	1/4"-20 THD.	3-7/8"	3.39	30-9316	
50W	1500	1	115	1.7	291	CWLE	Shaded Pole	5/16" x 3	3-7/8"	3.80	13435-0000	
50W	1500	1	230	.85	260	CWLE	Shaded Pole	3/8" x 1-1/2	3-7/8"	3.78	319352-000	

Kelvinator



277

Watt Output	RPM	Speeds	Volts	Amps	Stock Number	Rotation	Capacitor	Shaft Diameter & Length	Motor Dia.	"A" Dim.	Cross Reference	Notes
15W	1500	1	115	.60	277	CCWLE	Shaded Pole	5/16 x 7	3-7/8"	3.32	5.024-0366	

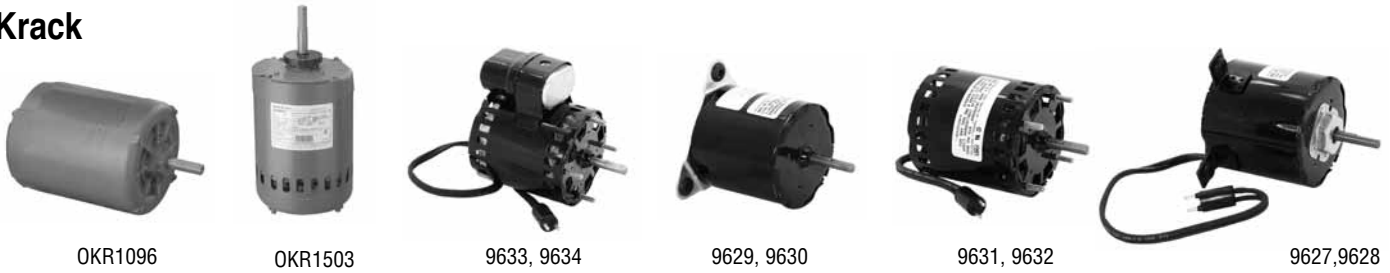
Notes:

69. Pin hole in shaft



O.E.M. - Direct Replacement

Krack



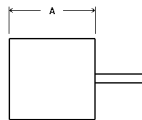
HP	RPM	Speeds	Volts	Amps	Stock Number	Rotation	Capacitor	Shaft Diameter & Length	Motor Dia.	"A" Dim.	Cross Reference	Notes
1/25	1550	1	115	1.3	9627	CCWLE	Shaded Pole	5/16" x 1-3/4"	3-3/8"	3-1/4"	11528 JAP216	4,6
1/25	1550	1	115	1.3	9629	CCWLE	Shaded Pole	5/16" x 1-3/4"	3-3/8"	3-1/4"	11510 8254110680 JA2P228	6
1/25	1550	1	208-230	0.7	9630	CCWLE	Shaded Pole	5/16" x 1-3/4"	3-3/8"	3-1/4"	11511 8254160150 JA2P229	6
1/20	1550	1	200-230	0.9	9628	CCWLE	Shaded Pole	5/16" x 1-1/2"	3-3/8"	3-1/2"	11529 JA2P217 JA2S149	4
1/15	1630	1	115	2.1	9631	CCWLE	Shaded Pole	5/16" x 1-1/2"	3-3/8"	3-5/8"	E206444 JA2Y031	4,6
1/15	1550	1	208-230	1.2	9632	CCWLE	Shaded Pole	5/16" x 1-1/2"	3-3/8"	3-5/8"	E206445 JA2Y030	4,6
1/15	1640	1	115	0.7	9633	CCWLE	INCLUDED	5/16" x 1-1/2"	3-3/8"	3-5/8"	JE2F029 E206447	4,6
1/15	1640	1	208-230	0.3	9634	CCWLE	INCLUDED	5/16" x 1-1/2"	3-3/8"	3-5/8"	JE2F030 E206448	4,6
1/2	1140	1	460/208-230	.95/2.0-1.9	OKR1096	REV	3 Phase	5/8" x 2"	6-1/2"	9-1/4"	150372 11096	118
1	850	1	460/200-230	2.0/4.4-4.0	OKR1503	REV	3 Phase	5/8" x 3-1/4"	6-1/2"	10-1/4"	151437 11503	368

Kramer Trenton



HP	RPM	Speeds	Volts	Amps	Stock Number	Rotation	Capacitor	Shaft Diameter & Length	Motor Dia.	"A" Dim.	Cross Reference	Notes
1/20	1450	1	208/230	1.1	396	CCWLE	Shaded Pole	5/16" x 2-1/2"	3-3/8"	3-1.4"		4
1/12	1050	1	115/230	2.7/1.3	469	CCWLE	Shaded Pole	1/2" x 3-3/8"	5"	3-1/2"	DA3G096 & 097	
1/4	1075	1	115/208	3.0/1.5	OKT1026	CCWLE	INCLUDED	1/2" x 2-1/2"	5-5/8"	4-7/8"	3128 5KCP35KG144S 5KCP35KG554S 5KCP39KGC100T	2,6

- Notes:
- 2. Ball Bearing
 - 4. Supplied with lead and plug assembly
 - 6. 60/50 HZ
 - 118. TEAO
 - 368. Inverter Duty



Continued on next page

**Kramer Trenton
(Continued)**



C662



OKT3035



OKT3041

HP	RPM	Speeds	Volts	Amps	Stock Number	Rotation	Capacitor	Shaft Diameter & Length	Motor Dia.	"A" Dim.	Cross Reference	Notes
1/3	1075	1	115/208-230	6.3/2.8-3.15	OKT3035	CCWOSE	INCLUDED	1/2" x 3-1/2"	5-5/8"	6-9/16"	03035	2
1/2	1075	1	208-230	4.3	OKT3041	CCWOSE	INCLUDED	1/2" x 3-1/2"	5-5/8"	7-1/4"	03041	2, 184, 201
3/4	1075	1	460/208-230	2.1/4.3-4.2	C662	REV	INCLUDED	5/8" x 2-1/2"	6-1/2"	10-1/4"	047-104,047-099, 048-004	2

Larkin Coil (see Heatcraft)

Manitowoc



250, 254



260

Watt Output	RPM	Speeds	Volts	Amps	Stock Number	Rotation	Capacitor	Shaft Diameter & Length	Motor Dia.	"A" Dim.	Cross Reference	Notes
25W	1500	1	115	1.1	250	CWLE	Shaded Pole	1/4" x 20 THD	3-7/8"	3.39	002412283	
35W	1500	1	115	1.4	254	CWLE	Shaded Pole	1/4" x 20 THD	3-7/8"	3.39	002401591 002412373	
50W	1500	1	230	.85	260	CWLE	Shaded Pole	3/8" x 1-1/2"	3-7/8"	3.78	002412353	

McQuay



342 (3.15" Bolt Circle)

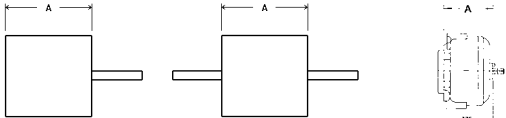


9400

HP	RPM	Speeds	Volts	Amps	Stock Number	Rotation	Capacitor	Shaft Diameter & Length	Motor Dia.	"A" Dim.	Cross Reference	Notes
1/15	1550	1	115/230	1.9/9	342	CCWLE	Shaded Pole	5/16" x 2-1/2"	3-3/8"	3-3/4"	BA2H015	
1/15 1/25-1/35	1000	3	115	1.5-1.0-.8	9400	CCWLE	4MFD/370V	5-5/8" x 38" x 5-5/8"	3-3/8"	4-5/8"	FASCO D1141 879-382563B-00 879-382563B-00	

Notes:

- 2. Ball Bearing
- 184. Leads exit is on shaft end
- 201. Four studs on a 5.15" diameter bolt circle



O.E.M. - Direct Replacement

Scotsman



250



258, 260

Watt Output	RPM	Speeds	Volts	Amps	Stock Number	Rotation	Capacitor	Shaft Diameter & Length	Motor Dia.	"A" Dim.	Cross Reference	Notes
25W	1500	1	115	1.1	250	CWLE	Shaded Pole	1/4" x 20 THD	3-7/8"	3.39	18-7200-01	
50W	1500	1	115	1.7	258	CWLE	Shaded Pole	3/8" x 1-1/2"	3-7/8"	3.78	18-5105-11	
50W	1500	1	230	.85	260	CWLE	Shaded Pole	3/8" x 1-1/2"	3-7/8"	3.78	18-5105-02	

Singer



993



9523

HP	RPM	Speeds	Volts	Amps	Stock Number	Rotation	Capacitor	Shaft Diameter & Length	Motor Dia.	"A" Dim.	Cross Reference	Notes
1/25	1550	1	115/230	1.6/0.8	9523	CCWLE	Shaded Pole	5/16" x 2-1/2"	3-3/8"	3-1/8"	Fasco D1164	
1/10	1550	1	230	1.0	993	REV	INCLUDED	5/16" x 3-3/4"	3-3/8"	4-7/8"	7071059	

Tecumseh



254, 256



276



98



9487
9488



OTC6001
OTC6004

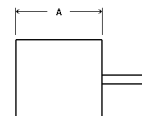
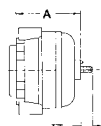


OTC1862
OTC1864

HP	RPM	Speeds	Volts	Amps	Stock Number	Rotation	Capacitor	Shaft Diameter & Length	Motor Dia.	"A" Dim.	Cross Reference	Notes
35W	1500	1	115	1.4	254	CWLE	Shaded Pole	1/4" x 20 THD	3-7/8"	3.39	810M035A29 TFM-351 ESPL35EM11-C1	
35W	1500	1	230	.70	256	CWLE	Shaded Pole	1/4" x 20 THD	3-7/8"	3.39	810M035A28 TFM-352 ESPL35EM21-C1	
50W	1500	1	230	.85	276	CCWLE	Shaded Pole	5/16" x 2-1/2"	3-7/8"	3.75	810M050A62	
1/20	1500	1	115	1.7	9488	CCWSE	Shaded Pole	5/16" x 2-1/8"	3-3/8"	4-7/8"	TFM191 810E019A080 EM F33HXGFG-2876	6
1/20	1500	1	230	1.1	OTC6004	CCWSE	Shaded Pole	5/16" x 2-1/2"	5"	3-1/16"	810S037B01 326P137	6
1/15	1550	1	460	.6	981	CCWSE	Shaded Pole	5/16" x 2-1/2"	3-3/8"	4-1/4"	810G037A47 Fasco D475 GE 5KSP11FG1197CS	184
1/15	1500	1	230	1.3	OTC6001	CCWLE	Shaded Pole	5/16" x 2-3/4"	5"	3-1/16"	810S050A99 326P136	6
1/12	1500	1	230	1.3	9487	CCWSE	Shaded Pole	5/16" x 2-1/8"	3-3/8"	4-7/8"	TFM262 810E026A81 EM F33HXDJ-3668	6
1/4	1625	1	230	1.9	OTC1862	CWLE	INCLUDED	1/2" x 2-3/4"	5-5/8"	4-3/8"	TFM1862 8330 KA55HXKGD8330	2,6
1/4	1625	1	460	.95	OTC1864	CWLE	INCLUDED	1/2" x 2-3/4"	5-5/8"	4-3/8"	TFM1864 8331 KA55HGE8331	2,6

Notes:

- 2. Ball Bearing
 - 6. 60/50 HZ
 - 184. Leads exit is on shaft end
- See parts & accessories on page 20



Tyler

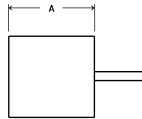


OTY1024

HP	RPM	Speeds	Volts	Amps	Stock Number	Rotation	Capacitor	Shaft Diameter & Length	Motor Dia.	"A" Dim.	Cross Reference	Notes
1/4	1625	1	230	1.9	OTY1024	CCWLE	INCLUDED	1/2" x 3"	5-5/8"	4-5/8"	760 D870 03042 5KCP39EGC053T 5KCP39EG755S 5KCP39EN81S X270	2,7,193,350

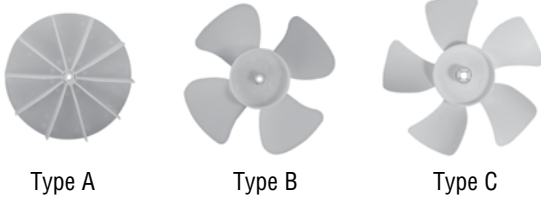
Notes:

- 2. Ball bearing
- 7. Resilient mounting rings included
- 193. Includes former GE brand equipment
- 350. Conduit connector included



Parts & Accessories for Unit Bearing & C-Frame Motors

Plastic Fan Blades Used with C-Frame Motors



Stock No.	Diameter	For Hub I.D.	No. of Shaft Size	Blades	Rotation*	Fan Type
626137	4.00"	Round	.187" or 3/16"	5	CW	C
700027	4.19"	Round	.181"	5	CW	C
700047	5.50"	Round	.187" or 3/16"	4	CCW	B
700048	5.50"	Round	.218" or 7/32"	4	CCW	B
700046	5.56"	Round	.187" or 3/16"	5	CCW	C
700049	5.56"	Round	.218" or 7/32"	5	CCW	C
1010784-001	4.62"	"D" Shaped	.181"	Impeller	CW/CCW	A

* Rotation determined by viewing air discharge side of fan blade.

Unit Bearing Fan Blades



Stock No.	Dia.	Pitch	CW Motor Airflow
2211	7"	20°	Suction
2212	7"	20°	Pusher
2217	8"	20°	Suction
2218	8"	20°	Pusher

Stock No.	Dia.	Pitch	CW Motor Airflow
2256	7 3/4"	32°	Suction

Stock No.	Dia.	Pitch	CW Motor Airflow
2235	8 3/4"	20°	Suction

Stock No.	Dia.	Pitch	CW Motor Airflow
2267	10"	22°	Suction
2268	10"	29°	Pusher

NOTE: Rotation determined by viewing air discharge side of fan. Fan should be guarded before operating. Tighten set screws securely before operating. Pusher = air over motor and through fan. Suction = air through fan and over motor.

Rubber Cushion

Stock No.1254A
12 Per Pack



Unit Bearing Mounting Brackets

Stock No.	Height To Motor Shaft	Bracket Height
2271	4 1/8"	2 1/32"
2272	4 9/16"	2 41/64"
2273	5 3/8"	3 29/64"
2274	6 1/4"	4 5/16"



Threaded Shaft Adapter

Stock No.1488A
Adapts 1/4" x 20 threaded shaft to 1/4" round shaft
2 Per Pack



Mounting Studs

Stock No.2064A
8-32 x 3/4"
8 screws per pack



Unit Bearing Speed Nut

Stock No.1264A
6 Per Pack



Note: Item to be discontinued when stock is depleted

Mounting Studs

Stock No.2087A
10-32 x 1"
4 screws per pack



Cross Reference

Mfg. Part No.	Stock No.	Page No.	Mfg. Part No.	Stock No.	Page No.
002401591	254	4, 12, 15, 17, 18	14003	C01671	1
002412283	250	4, 17, 18	14005	C01672	1
002412313	267	5	14007	C01673	1
002412353	260	4, 12, 15, 17, 18	14013	C01677	1
002412373	254	4, 12, 15, 17, 18	14015	C01678	1
015184-12	250	4, 17, 18	14017	C01679	1
015184-27	252	4	14019	C01680	1
027817-12	254	4, 12, 15, 17, 18	14021	C01681	1
029770-12	258	"4, 12, 18"	14023	C01682	1
029770-27	260	4, 12, 15, 17, 18	14025	C01683	1
03035	OKT3035	17	1431	9653	8
03041	OKT3041	17	1432	9654	8
03042	OTY1024	18	1442	9655	8
047-099	C662	17	1482	H1053	11
047-104	C662	17	150372	OKR1096	16
048-004	C662	17	151072	260	4, 12, 15, 17, 18
050-0018-00	OCP0108	12	151077-01	260	4, 12, 15, 17, 18
050-0108-00	OCP0108	12	151080-01	UB09CCHA2F	2
050-0244-00	260	4, 12, 15, 17, 18	151080-02	UB09CCHA2F	2
050-0244-01	258	4, 12, 18	151437	OKR1503	16
050-0244-02	290	4, 12	1531	9656	8
050-0250-00	OCP0250	12	1532	9658	8
050-0251-00	OCP0251	12	1541	9657	8
050-0264-0	276	4, 12, 18	1542	9659	8
050-0267-0	254	4, 12, 15, 17, 18	1648	OHS10206	14
0644	OHS9983	14	18-0559-00	UB09CCHA2F	2
090219-12	254	4, 12, 15, 17, 18	18-0559-01	246	4, 13, 15
1016	9663	8	18-0595-01	258	4, 12, 18
11096	OKR1096	16	18-0595-02	260	4, 12, 15, 17, 18
111147	H1050	11	18-0788-01	258	4, 12, 18
111148	H1051	11	18-0788-02	260	4, 12, 15, 17, 18
11503	OKR1503	16	1818	H1050	11
11510	9629	16	1819	H1051	11
11511	9630	16	1820	H1050	11
11528	9627	16	1821	H1051	11
11529	9628	16	1822	H1052	11
115778	H1050	11	1828	H1053	11
115779	H1051	11	18-3704-02	260	4, 12, 15, 17, 18
12-1576-02	UB09CWLA2F	2	18-5105-02	260	4, 12, 15, 17, 18
12-1661-01	258	4, 12, 18	18-5105-11	258	4, 12, 18
12-1661-02	260	4, 12, 15, 17, 18	18-5505-01	258	4, 12, 18
12-1681-01	246	4, 13, 15	18-5505-11	260	4, 12, 15, 17, 18
12-1681-02	UB09CCHA2F	2	18-7200-01	250	4, 17, 18
1232	9665	8	18-8736-01	254	4, 12, 15, 17, 18
13-00311	246	4, 13, 15	18-8736-02	254	4, 12, 15, 17, 18
13-01283	UB09CCHA2F	2	18-8736-05	254	4, 12, 15, 17, 18
1331	9660	8	18-8899-01	256	4, 15, 18
1332	9664	8	18-8926-01	259	4
1336	9336	8	20-0189	268	5
1341	9661	8	2103	UB04CCL2F	2
1342	9662	8	2108	UB09CWL2F	2
134350000	291	4, 15	2109	UB09CCH2F	2
14001	C01670	1	2110	UB09CWH2F	2

Cross Reference

Mfg. Part No.	Stock No.	Page No.	Mfg. Part No.	Stock No.	Page No.
2111	UB16CCLV12F	2	30-9369	293	4, 15
2112	UB16CWL12F	2	309316-000	256	4, 15, 18
2113 (unit bearing)	UB16CCHV12F	2	31-0154	297	4, 15
2113 (21/29 frame)	609	10	31-0472	293	4, 15
2114	UB16CWHV12F	2	3124	OCP0108	12
2115	UB04CWL2F	2	3128	OKT1026	17
2116	UB06CCL2F	2	3189	H1050	11
2117	UB06CWL2F	2	3190	H1051	11
2118	UB09CCL2F	2	319352-000	260	4, 12, 15, 17, 18
2119	UB05CWL2F	2	319357-000	260	4, 12, 15, 17, 18
2122	UB04CCH2F	2	322P913	OCP0251	12
2123	UB04CWH2F	2	322P914	OCP0250	12
2162513	254	4, 12, 15, 17, 18	326P136	OTC6001	18
2162722	254	4, 12, 15, 17, 18	326P137	OTC6004	18
2121	608	10	332417-011	UB09CWLA2F	2
2122	608	10	332418-011	UB06CWLA2F	2
2131	615	10	3590	CRAN590	1
2132	615	10	35961	256	4, 15, 18
2141	614	10	37153	260	4, 12, 15, 17, 18
2142	614	10	3M612	160A	14
2223	606, 612A	10	5007S	C01691	13
2231	613A	10	5007T	C01692	13
2232	613A	10	5008SS	572A	13
2321	604	10	5008TS	573A	13
2322	604	10	501-058B	252	4
2331	611	10	501-070B	246	4, 13, 15
2332	611	10	501-086B	254	4, 12, 15, 17, 18
23346	259	4	501-114B	258	4, 12, 18
2341	610	10	5018S	C01691	13
2342	610	10	5018T	C01692	13
23526	246	4, 13, 15	5.024-0366	277	4, 13, 15
24-03448	256	4, 15, 18	5034LS	572A	13
24-0366	277	4, 13, 15	5034MS	573A	13
25242	254	4, 12, 15, 17, 18	5036F	C01691	13
25308601	9721	9, 13	5036G	C01692	13
25309101	9720A / 9721	13 / 9, 13	5109	UB02CWLA	3
253-1194	574	13	5111	UB025CWL	3
253-1195	575	13	5211	UB04CWL	3
2531194	9721	9, 13	5212	UB04CCL	3
2531195	9721	9, 13	5213	UB04CWLA	3
259983	OHS9983	14	5214	UB04CCLA	3
2927	9666	10	5221	UB04CWH	3
2928	9667	10	5222	UB04CCH	3
2953	9668	10	5223	UB04CWHA	3
2954	9669	10	5224	UB04CCHA	3
3001	160A	14	5311	UB06CWL	3
3008	OHS10206	14	5312	UB06CCL	3
3009	OHS1016	14	5313	UB06CWLA	3
3011	OHS1004	14	5314	UB06CCLA	3
3012	OHS10206	14	5411	UB09CWL	3
3047	OCP1024	12	5412	UB09CCL	3
3067	OHR1106	14	5413	UB09CWLA	3
30-9316	256	4, 15, 18	5414	UB09CCLA	3

Cross Reference

Mfg. Part No.	Stock No.	Page No.		Mfg. Part No.	Stock No.	Page No.
5421	UB09CWH	3		5KSP11BG1097	9657	8
5422	UB09CCH	3		5KSP11BG1119	9656	8
5423	UB09CWHHA	3		5KSP11BG1137	9659	8
5424	UB09CCHA	3		5KSP11BG1154	9659	8
5811	UB16CWL1V1	3		5KSP11BG1163	9657	8
5812	UB16CCLV1	3		5KSP11BG1183	9657	8
5813	UB16CWLA	3		5KSP11BG1184	9657	8
5814	UB16CCLA	3		5KSP11BG1185	9659	8
5821	UB16CWHV1	3		5KSP11BG1186	9659	8
5822	UB16CCHV1	3		5KSP11BG1272	9653	8
5823	UB16CWHA	3		5KSP11BG1273	9654	8
5KCP32KG175S	OCP0108	12		5KSP11BG1311	9657	8
5KCP32KG259S	OCP0108	12		5KSP11BG1378	9657	8
5KCP35KG144S	OKT1026	17		5KSP11BG734	9657	8
5KCP35KG554S	OKT1026	17		5KSP11BG735	9656	8
5KCP35MN34S	OKT3035	17		5KSP11BG736	9659	8
5KCP36MG138S	OKT3035	17		5KSP11BG737	9658	8
5KCP37PG244S	OKT3041	17		5KSP11BG742	9657	8
5KCP37PN244S	OKT3041	17		5KSP11BG743	9656	8
5KCP39CGD151CS	OTC1862	18		5KSP11BG744	9657	8
5KCP39CGN208AS	OTC1862	18		5KSP11BG745	9658	8
5KCP39DGN206AS	OTC1864	18		5KSP11BG774	9656	8
5KCP39DGN207AS	OTC1862	18		5KSP11BG776	9656	8
5KCP39ED755S	OTY1024	18		5KSP11BG784	9657	8
5KCP39EGC053T	OTY1024	18		5KSP11BG801	9656	8
5KCP39EGD150BS	OTC1862	18		5KSP11BG829	9657	8
5KCP39EN81S	OTY1024	18		5KSP11BG830	9657	8
5KCP39GG3537S	OCP1024	12		5KSP11BG834	9657	8
5KCP39GG3611AS	OHS1016	14		5KSP11BG924	9657	8
5KCP39GG5606S	OHS10206	14		5KSP11DB131	9657	8
5KCP39GG765S	OHS10206	14		5KSP11DG101	9657	8
5KCP39GGC052T	OHS10206	14		5KSP11DG1017	9657	8
5KCP39GGD320T	OCP1024	12		5KSP11DG1062	9657	8
5KCP39GN765	OHS10206	14		5KSP11DG1132	9654	8
5KCP39KG1369BS	160A	14		5KSP11DG116	9657	8
5KCP39KGB906AS	OCP0108	12		5KSP11DG117	9656	8
5KCP39KGB906AT	OCP0108	12		5KSP11DG1175	9656	8
5KCP39KGC100T	OKT1026	17		5KSP11DG1176	9658	8
5KCP39MGC055T	OKT3035	17		5KSP11DG1177	9655	8
5KCP39MGD118AS	OTC1864	18		5KSP11DG118	9659	8
5KCP39PGC030S	OHR1106	14		5KSP11DG12	9656	8
5KCP39PGC054T	OKT3041	17		5KSP11DG120	9657	8
5KCP39PGC910S	OHR1106	14		5KSP11DG123	9657	8
5KCP39PGH728T	992A	14		5KSP11DG124	9659	8
5KCP39PP19162G	OHR1106	14		5KSP11DG1250	9657	8
5KS021HG1423	609*	10		5KSP11DG132	9659	8
5KSM59ES2001	9721	9, 13		5KSP11DG134	9658	8
5KSM59JS5036S	9721	9, 13		5KSP11DG145	9658	8
5KSM59JSK143S	9721	9, 13		5KSP11DG154	9661, 672B	8
5KSM59LS2262AS	9721	9, 13		5KSP11DG155	9657	8
5KSP11BG1001	9659	8		5KSP11DG158	9657	8
5KSP11BG1022	9657	8		5KSP11DG171	9658	8
5KSP11BG1064	9656	8		5KSP11DG177	9659	8

Cross Reference

Mfg. Part No.	Stock No.	Page No.		Mfg. Part No.	Stock No.	Page No.
5KSP11DG182	9658	8		5KSP11DG492	9656	8
5KSP11DG184	9656	8		5KSP11DG494	9657	8
5KSP11DG199	9657	8		5KSP11DG495	9659	8
5KSP11DG200	9659	8		5KSP11DG496	9656	8
5KSP11DG216	9657	8		5KSP11DG497	9658	8
5KSP11DG227	9656	8		5KSP11DG501	9662, 672B	8
5KSP11DG234	9657	8		5KSP11DG506	9658	8
5KSP11DG235	9659	8		5KSP11DG507	9658	8
5KSP11DG237	9659	8		5KSP11DG509	9658	8
5KSP11DG244	9657	8		5KSP11DG510	9657	8
5KSP11DG254	9657	8		5KSP11DG514	9656	8
5KSP11DG257	9656	8		5KSP11DG532	9658	8
5KSP11DG259	9659	8		5KSP11DG560	9657	8
5KSP11DG26	9659	8		5KSP11DG571	9657	8
5KSP11DG267	9657	8		5KSP11DG581	9657	8
5KSP11DG27	9657	8		5KSP11DG6	9656	8
5KSP11DG273	9658	8		5KSP11DG634	9661, 672B	8
5KSP11DG274	9658	8		5KSP11DG644	9656	8
5KSP11DG277	9657	8		5KSP11DG662	9657	8
5KSP11DG278	9659	8		5KSP11DG699	9656	8
5KSP11DG28	9657	8		5KSP11DG716	9659	8
5KSP11DG288	9657	8		5KSP11DG728	9657	8
5KSP11DG291	9657	8		5KSP11DG732	9656	8
5KSP11DG297	9657	8		5KSP11DG739	9656	8
5KSP11DG3	9657	8		5KSP11DG747	9656	8
5KSP11DG33	9657	8		5KSP11DG749	9658	8
5KSP11DG351	9657	8		5KSP11DG755	9653, 671B	8
5KSP11DG352	9657	8		5KSP11DG756	9655, 672B	8
5KSP11DG353	9659	8		5KSP11DG757	9654, 671B	8
5KSP11DG354	9656	8		5KSP11DG766	9656	8
5KSP11DG355	9658	8		5KSP11DG814	9653, 671B	8
5KSP11DG36	9657	8		5KSP11DG816	9654, 671B	8
5KSP11DG360	9657	8		5KSP11DG9	9657	8
5KSP11DG367	9659	8		5KSP11DG901	9656	8
5KSP11DG392	9657	8		5KSP11DG902	9658	8
5KSP11DG400	9656	8		5KSP11DG903	9657	8
5KSP11DG403	9657	8		5KSP11DG904	9659	8
5KSP11DG406	9659	8		5KSP11FG10	672B	8
5KSP11DG407	9659	8		5KSP11FG1046	9663, 671B	8
5KSP11DG41	9658	8		5KSP11FG1094	9663, 671B	8
5KSP11DG413	9657	8		5KSP11FG1102	9661, 672B	8
5KSP11DG430	9657	8		5KSP11FG1120	672B	8
5KSP11DG431	9659	8		5KSP11FG1121	9662	8
5KSP11DG447	9656	8		5KSP11FG1121	672B	8
5KSP11DG455	9657	8		5KSP11FG1124	672B	8
5KSP11DG458	9657	8		5KSP11FG1126	672B	8
5KSP11DG468	9659	8		5KSP11FG1129	672B	8
5KSP11DG469	9656	8		5KSP11FG114	672B	8
5KSP11DG47	9656	8		5KSP11FG1179	9662, 672B	8
5KSP11DG477	9658	8		5KSP11FG119	672B	8
5KSP11DG479	9657	8		5KSP11FG1197CS	981	8, 18
5KSP11DG48	9656	8		5KSP11FG1214	9660, 671B	8
5KSP11DG484	9656	8		5KSP11FG1214S	9660, 671B	8

Cross Reference

Mfg. Part No.	Stock No.	Page No.	Mfg. Part No.	Stock No.	Page No.
5KSP11FG1215	9664, 671B	8	5KSP11FG38	9655, 672B	8
5KSP11FG1216	9661, 672B	8	5KSP11FG398	9653, 671B	8
5KSP11FG1217	9662	8	5KSP11FG4	672B	8
5KSP11FG1217S	9662	8	5KSP11FG401	9654, 671B	8
5KSP11FG1222	9664, 671B	8	5KSP11FG402	9654, 671B	8
5KSP11FG127	672B	8	5KSP11FG411	9655, 672B	8
5KSP11FG13	9653, 671B	8	5KSP11FG418	9654, 671B	8
5KSP11FG130	672B	8	5KSP11FG419	672B	8
5KSP11FG1330	9661	8	5KSP11FG420	9655, 672B	8
5KSP11FG135	9655, 672B	8	5KSP11FG423	9655, 672B	8
5KSP11FG1377	9664, 671B	8	5KSP11FG425	672B	8
5KSP11FG140	9655, 672B	8	5KSP11FG426	9655, 672B	8
5KSP11FG1541	9664	8	5KSP11FG427	9655, 672B	8
5KSP11FG160	672B	8	5KSP11FG428	9655, 672B	8
5KSP11FG164	672B	8	5KSP11FG429	672B	8
5KSP11FG165	672B	8	5KSP11FG432	9655, 672B	8
5KSP11FG166	9654, 671B	8	5KSP11FG441	672B	8
5KSP11FG173	9655, 672B	8	5KSP11FG443	9661, 672B	8
5KSP11FG191	672B	8	5KSP11FG444	672B	8
5KSP11FG193	9655, 672B	8	5KSP11FG457	9655, 672B	8
5KSP11FG195	9655, 672B	8	5KSP11FG463	9661, 672B	8
5KSP11FG196	672B	8	5KSP11FG476	672B	8
5KSP11FG201	9655, 672B	8	5KSP11FG485	9661, 672B	8
5KSP11FG205	9653, 671B	8	5KSP11FG491	672B	8
5KSP11FG206	672B	8	5KSP11FG498	9655, 672B	8
5KSP11FG209	9654, 671B	8	5KSP11FG499	9653, 671B	8
5KSP11FG210	9654, 671B	8	5KSP11FG500	9654, 671B	8
5KSP11FG217	672B	8	5KSP11FG502	672B	8
5KSP11FG22	9661, 672B	8	5KSP11FG518	672B	8
5KSP11FG222	672B	8	5KSP11FG519	9655, 672B	8
5KSP11FG226	672B	8	5KSP11FG522	672B	8
5KSP11FG228	9653, 671B	8	5KSP11FG527	672B	8
5KSP11FG229	9655, 672B	8	5KSP11FG528	9653, 671B	8
5KSP11FG239	9655, 672B	8	5KSP11FG544	9655, 672B	8
5KSP11FG241	9655, 672B	8	5KSP11FG547	9655, 672B	8
5KSP11FG248	672B	8	5KSP11FG548	9654, 671B	8
5KSP11FG255	672B	8	5KSP11FG550	9655, 672B	8
5KSP11FG268	672B	8	5KSP11FG552	672B	8
5KSP11FG270	9654, 671B	8	5KSP11FG568	9655, 672B	8
5KSP11FG275	672B	8	5KSP11FG621	672B	8
5KSP11FG281	9655, 672B	8	5KSP11FG622	9655, 672B	8
5KSP11FG285	9653, 671B	8	5KSP11FG627	672B	8
5KSP11FG286	9654, 671B	8	5KSP11FG651	672B	8
5KSP11FG287	9654	8	5KSP11FG656	9654, 671B	8
5KSP11FG289	672B	8	5KSP11FG671	672B	8
5KSP11FG298	672B	8	5KSP11FG692	9654, 671B	8
5KSP11FG310	672B	8	5KSP11FG698	672B	8
5KSP11FG356	672B	8	5KSP11FG7	9653, 671B	8
5KSP11FG357	9655, 672B	8	5KSP11FG703	9653, 671B	8
5KSP11FG358	9653, 671B	8	5KSP11FG718	672B	8
5KSP11FG359	9654, 671B	8	5KSP11FG788	672B	8
5KSP11FG37	9655, 672B	8	5KSP11FG789	9660, 671B	8
5KSP11FG373	9654, 671B	8	5KSP11FG790	9662, 672B	8

Cross Reference

Mfg. Part No.	Stock No.	Page No.		Mfg. Part No.	Stock No.	Page No.
5KSP11FG791	9663, 671B	8		5KSP21DG1501	612A	10
5KSP11FG792	9661, 672B	8		5KSP21DG1513	612A	10
5KSP11FG793	9660, 671B	8		5KSP21DG1514	612A	10
5KSP11FG794	9662, 672B	8		5KSP21DG1515	613A	10
5KSP11FG795	9664, 671B	8		5KSP21DG1516	613A	10
5KSP11FG796	9661, 672B	8		5KSP21DG1550	612A*	10
5KSP11FG797	9660, 671B	8		5KSP21DG1583	612A*	10
5KSP11FG798	9662, 672B	8		5KSP21DG164	613A	10
5KSP11FG799	9664, 671B	8		5KSP21DG1667	613A*	10
5KSP11FG817	9661, 672B	8		5KSP21DG1672	613A	10
5KSP11FG818	9660, 671B	8		5KSP21DG1699	613A	10
5KSP11FG820	9664, 671B	8		5KSP21DG1701	612A	10
5KSP11FG951	9653, 671B	8		5KSP21DG1734	613A	10
5KSP11FG952	9654, 671B	8		5KSP21DG1752	613A	10
5KSP11FG953	672B	8		5KSP21DG1786	613A	10
5KSP11FG954	9655, 672B	8		5KSP21DG1834	613A	10
5KSP11FG954S	9655	8		5KSP21DG1864	613A	10
5KSP11FG957	672B	8		5KSP21DG1885	613A	10
5KSP11FG958	9655, 672B	8		5KSP21DG1890	613A*	10
5KSP11FG962	9663, 671B	8		5KSP21DG1915	613A	10
5KSP11FG963	672B	8		5KSP21DG1943	613A*	10
5KSP11FG967	672B	8		5KSP21DG198	613A	10
5KSP11HG1230	671B	8		5KSP21DG2023	613A*	10
5KSP11HG1231	671B	8		5KSP21DG205	613A	10
5KSP11HG1245	9665, 671B	8		5KSP21DG2065	613A*	10
5KSP11HG1246	671B	8		5KSP21DG2116	613A*	10
5KSP21DB1021	612A	10		5KSP21DG2123	613A*	10
5KSP21DB107	612A	10		5KSP21DG2124	612A*	10
5KSP21DB1164	612A	10		5KSP21DG2129	613A*	10
5KSP21DB1200	612A	10		5KSP21DG2139	613A*	10
5KSP21DB1201	613A*	10		5KSP21DG2140	613A*	10
5KSP21DB1236	613A*	10		5KSP21DG2162	612A	10
5KSP21DB128	613A	10		5KSP21DG2181	612A	10
5KSP21DB1283	613A*	10		5KSP21DG2213	612A*	10
5KSP21DG1	612A	10		5KSP21DG2214	612A*	10
5KSP21DG101	613A	10		5KSP21DG2268	612A*	10
5KSP21DG1106	613A	10		5KSP21DG2307	612A*	10
5KSP21DG1129	612A*	10		5KSP21DG2309	612A*	10
5KSP21DG116	612A	10		5KSP21DG2326	613A*	10
5KSP21DG118	613A	10		5KSP21DG249	612A	10
5KSP21DG1227	613A*	10		5KSP21DG250	612A	10
5KSP21DG1235	612A*	10		5KSP21DG29	613A	10
5KSP21DG1255	613A*	10		5KSP21DG3001	613A	10
5KSP21DG1271	612A*	10		5KSP21DG3002	613A	10
5KSP21DG1328	613A	10		5KSP21DG3003	612A	10
5KSP21DG1334	613A*	10		5KSP21DG3004	612A	10
5KSP21DG1337	613A	10		5KSP21DG3021	613A*	10
5KSP21DG134	612A	10		5KSP21DG3024	612A*	10
5KSP21DG14	612A	10		5KSP21DG3027	613A	10
5KSP21DG1437	612A*	10		5KSP21DG379	613A	10
5KSP21DG144	612A	10		5KSP21DG42	613A	10
5KSP21DG1453	613A*	10		5KSP21DG425	612A	10
5KSP21DG1463	612A*	10		5KSP21DG432	613A	10

* Shaft Bushing Required

Cross Reference

Mfg. Part No.	Stock No.	Page No.		Mfg. Part No.	Stock No.	Page No.
5KSP21DG466	613A	10		5KSP21FG1522	615	10
5KSP21DG472	612A	10		5KSP21FG1542	615*	10
5KSP21DG480	613A	10		5KSP21FG1559	615*	10
5KSP21DG501	612A	10		5KSP21FG16	614	10
5KSP21DG532	613A	10		5KSP21FG1612	608*	10
5KSP21DG548	613A	10		5KSP21FG1669	615	10
5KSP21DG589	612A	10		5KSP21FG1682	614*	10
5KSP21DG6	612A	10		5KSP21FG1686	614*	10
5KSP21DG68	612A	10		5KSP21FG1687	615*	10
5KSP21DG684	613A	10		5KSP21FG1688	614*	10
5KSP21DG729	613A	10		5KSP21FG1698	614*	10
5KSP21DG731	613A	10		5KSP21FG1789	614*	10
5KSP21DG739	613A	10		5KSP21FG1792	614*	10
5KSP21DG741	612A	10		5KSP21FG199	615	10
5KSP21DG780	612A	10		5KSP21FG2	614	10
5KSP21DG786	613A	10		5KSP21FG2039	614*	10
5KSP21DG810	612A*	10		5KSP21FG2182	614*	10
5KSP21DG820	613A	10		5KSP21FG2187	615*	10
5KSP21DG828	612A*	10		5KSP21FG2279	614*	10
5KSP21DG836	613A*	10		5KSP21FG240	615	10
5KSP21DG837	613A	10		5KSP21FG269	614	10
5KSP21DG839	612A	10		5KSP21FG3027	615	10
5KSP21DG86	613A	10		5KSP21FG3031	615	10
5KSP21DG906	612A*	10		5KSP21FG3101	615	10
5KSP21DG907	612A*	10		5KSP21FG3103	614	10
5KSP21DG908	613A*	10		5KSP21FG3104	615	10
5KSP21DG909	613A*	10		5KSP21FG3121	615*	10
5KSP21DG941	612A*	10		5KSP21FG3122	615*	10
5KSP21DG942	612A*	10		5KSP21FG3123	614*	10
5KSP21DG943	613A*	10		5KSP21FG3124	615*	10
5KSP21DG944	613A*	10		5KSP21FG3156	608	10
5KSP21DG957	612A	10		5KSP21FG3196	608	10
5KSP21DG976	613A	10		5KSP21FG485	613A	10
5KSP21FG1024	614*	10		5KSP21FG604	613A	10
5KSP21FG112	615	10		5KSP21FG76	613A	10
5KSP21FG1136	614*	10		5KSP21FG81	615	10
5KSP21FG1159	614	10		5KSP21FG831	614	10
5KSP21FG1160	614	10		5KSP21FG832	615*	10
5KSP21FG1231	614*	10		5KSP21FG833	614*	10
5KSP21FG1239	614*	10		5KSP21FG876	614*	10
5KSP21FG124	615	10		5KSP21FG914	614*	10
5KSP21FG1240	615*	10		5KSP21FG915	614*	10
5KSP21FG1243	614*	10		5KSP21FG916	615*	10
5KSP21FG125	614	10		5KSP21FG917	615*	10
5KSP21FG1253	614*	10		5KSP21FG92	615	10
5KSP21FG1332	615	10		5KSP21FG947	614*	10
5KSP21FG1361	614*	10		5KSP21FG948	614*	10
5KSP21FG1407	614*	10		5KSP21FG949	615*	10
5KSP21FG1415	614*	10		5KSP21HG1002	608*	10
5KSP21FG1416	614*	10		5KSP21HG1003	608*	10
5KSP21FG1474	614	10		5KSP21HG1132	613A*	10
5KSP21FG1475	614	10		5KSP21HG1134	614	10
5KSP21FG1521	615	10		5KSP21HG1135	614	10

* Shaft Bushing Required

Cross Reference

Mfg. Part No.	Stock No.	Page No.	Mfg. Part No.	Stock No.	Page No.
5KSP21HG1172	614*	10	5KSP21HG2188	614*	10
5KSP21HG121	613A	10	5KSP21HG2216	608*	10
5KSP21HG1219	614*	10	5KSP21HG274	608	10
5KSP21HG1233	614*	10	5KSP21HG3	614	10
5KSP21HG1244	614*	10	5KSP21HG314	609	10
5KSP21HG1245	615	10	5KSP21HG3203	614	10
5KSP21HG1246	608*	10	5KSP21HG3204	614	10
5KSP21HG1247	609	10	5KSP21HG3221	615*	10
5KSP21HG1248	614*	10	5KSP21HG3222	615*	10
5KSP21HG1249	614*	10	5KSP21HG3223	614	10
5KSP21HG1273	609	10	5KSP21HG3224	614*	10
5KSP21HG1291	615*	10	5KSP21HG3253	608	10
5KSP21HG1299	613A*	10	5KSP21HG3255	609	10
5KSP21HG1305	614*	10	5KSP21HG3265	609	10
5KSP21HG1306	614*	10	5KSP21HG394	609	10
5KSP21HG1317	608*	10	5KSP21HG405	614	10
5KSP21HG1336	615	10	5KSP21HG43	609	10
5KSP21HG1363	614*	10	5KSP21HG437	608	10
5KSP21HG1376	614*	10	5KSP21HG455	609	10
5KSP21HG1387	615*	10	5KSP21HG459	608	10
5KSP21HG1419	615*	10	5KSP21HG47	609	10
5KSP21HG1421	614*	10	5KSP21HG5	608	10
5KSP21HG1459	614	10	5KSP21HG528	614	10
5KSP21HG1527	614	10	5KSP21HG532	609	10
5KSP21HG1528	614	10	5KSP21HG561	614	10
5KSP21HG1530	615	10	5KSP21HG65	615	10
5KSP21HG1532	609	10	5KSP21HG66	609	10
5KSP21HG1536	608	10	5KSP21HG690	608	10
5KSP21HG1537	609	10	5KSP21HG77	614	10
5KSP21HG1599	614	10	5KSP21HG779	608*	10
5KSP21HG1600	614	10	5KSP21HG815	608*	10
5KSP21HG1605	614	10	5KSP21HG822	614*	10
5KSP21HG1651	614*	10	5KSP21HG856	608*	10
5KSP21HG1670	615	10	5KSP21HG858	608*	10
5KSP21HG1676	608	10	5KSP21HG877	608*	10
5KSP21HG1694	614	10	5KSP21HG921	614*	10
5KSP21HG1695	614	10	5KSP21HG922	614*	10
5KSP21HG1710	608	10	5KSP21HG924	615*	10
5KSP21HG18	614	10	5KSP21HG925	608*	10
5KSP21HG1807	609*	10	5KSP21HG926	609*	10
5KSP21HG1808	614*	10	5KSP21HG928	609*	10
5KSP21HG1832	614*	10	5KSP21HG930	614*	10
5KSP21HG1833	614*	10	5KSP21HG932	608*	10
5KSP21HG1852	615	10	5KSP21HG953	614*	10
5KSP21HG1853	615	10	5KSP21HG954	614*	10
5KSP21HG19	608	10	5KSP21HG956	608*	10
5KSP21HG1928	614*	10	5KSP21HG958	609*	10
5KSP21HG1967	614	10	5KSP21HG959	614*	10
5KSP21HG1968	614	10	5KSP21HG960	615	10
5KSP21HG1970	615	10	5KSP21HG961	608*	10
5KSP21HG1980	608*	10	5KSP21HG962	609*	10
5KSP21HG2157	608*	10	5KSP21HG977	615*	10
5KSP21HG2183	614*	10	5KSP29BG3001	613A	10

* Shaft Bushing Required

Cross Reference

Mfg. Part No.	Stock No.	Page No.	Mfg. Part No.	Stock No.	Page No.
5KSP29BG3002	611	10	800469	246	4, 13, 15
5KSP29BG3004	611	10	810E019A080	9488	18
5KSP29BG3053	604	10	810E026A81	9487	18
5KSP29BG3054	604	10	810E124A51	OTC1862	18
5KSP29BK900	610	10	810E124B34	OTC1862	18
5KSP29BK9013	610	10	810E186A52	OTC1864	18
5KSP29DG3013	612A	10	810E186A53	OTC1862	18
5KSP29DG3101	613A	10	810E186A82	OTC1862	18
5KSP29DG3102	613A	10	810E186A83	OTC1864	18
5KSP29DG3104	613A	10	810E186B35	OTC1864	18
5KSP29DG5125	613A	10	810E186B36	OTC1862	18
5KSP29DK1330	612A	10	810G037A47	981	8, 18
5KSP29DK1519	608*	10	810G124A45	OTC1862	18
5KSP29FG3201	613A	10	810G124B30	OTC1862	18
5KSP29FG3202	615	10	810G186A44	OTC1864	18
5KSP29FG3203	614	10	810G186B31	OTC1864	18
5KSP29FG3204	615	10	810G186B32	OTC1862	18
5KSP29FG3253	608	10	810M035A21	256	4, 15, 18
5KSP29FG3254	608	10	810M035A28	256	4, 15, 18
5KSP29FG3255	609	10	810M035A29	254	4, 12, 15, 17, 18
5KSP29FK1596	614	10	810M050A62	276	4, 12, 18
5KSP29FK1764	613A	10	810R124B17	OTC1862	18
5KSP29HK1150	614*	10	810R186B15	OTC1862	18
5KSP29HK894	614	10	810S037B01	OTC6004	18
5KSP39DB4220AS	OHS1004	14	810S050A99	OTC6001	18
5KSP39DG2221S	OHS1004	14	810S124B38	OTC1862	18
5KSP39GGA967T	OHS10206	14	810S186B39	OTC1864	18
600	C01670	1	810S186B40	OTC1862	18
602	C01672	1	82001	160A	14
644	OHS9983	14	8254110680	9629	16
6127	OCP0108	12	8254160150	9630	16
6128	OCP0251	12	8330	OTC1862	18
6129	OCP0250	12	8331	OTC1864	18
700	C01700	1	85	C01691	13
702	C01672	1	86	C01692	13
7071059	993	18	879-382563B-00	9400	17
7071061	9720A / 9721	13 / 9, 13	879-386857	246	4, 13, 15
710	C01670	1	8987	H1052	11
7163-2113	9721	9, 13	9161045-04	246	4, 13, 15
7163-3371	9721	9, 13	9161078-01	254	4, 12, 15, 17, 18
7190-0442	9720A / 9721	13 / 9, 13	9161078-03	256	4, 15, 18
7190-2084	9720A / 9721	13 / 9, 13	9650	9721	9, 13
7190-2255	9721	9, 13	9651	9721	9, 13
7190-2285	9721	9, 13	9652	9721	9, 13
7190-2969	9721	9, 13	9653	9721	9, 13
750	C01680	1	9656	9720A / 9721	13 / 9, 13
7502	C01675	1	9664	9721	9, 13
760	OTY1024	18	998-1007-00	288	4, 12
800405	248	4	998-1008-00	289	4, 12
800411	246	4, 13, 15	B13400227	286	5
800458	246	4, 13, 15	B65F30	270	5
800459	248	4	BA2H015	342	17
800466	254	4, 12, 15, 17, 18	CFM3156A	H1050	11

* Shaft Bushing Required

Cross Reference

Mfg. Part No.	Stock No.	Page No.	Mfg. Part No.	Stock No.	Page No.
CFM3166A	H1051	11	EM681	C01681	1
D1101	9721	9, 13	EM682	C01682	1
D1103	9721	9, 13	EM683	C01683	1
D1122	9721	9, 13	EM684	C01684	1
D1123	9721	9, 13	EM685	C01685	1
D1124	9721	9, 13	EM691	C01691	13
D1125	9720A / 9721	13 / 9, 13	EM692	C01692	13
D1126	9721	9, 13	ESP60BCU4K7-C1	262	5
D1141	9400	17	ESP60BCU4K8-C1	263	5
D1152	9721	9, 13	ESP60BH4K3-C1	264	5
D1154	9721	9, 13	ESP60BHG4K3R-C1	265	5
D1164	9523	18	ESPL15EMJR1B1	293	4, 15
D475	981	8, 18	ESPL16EM1	246	4, 13, 15
D554	UB04CWLA2F	2	ESPL16EM12	246	4, 13, 15
D555	UB04CCLA2F	2	ESPL16EM2	248	4
D558	UB06CWLA2F	2	ESPL16EM2	248	4
D559	UB06CCLA2F	2	ESPL16EMV1	246	4, 13, 15
D562	UB09CWLA2F	2	ESPL16EMV2	248	4
D562	UB09CWLA2F	2	ESPL25EM1	250	4, 17, 18
D563	UB09CCLA2F	2	ESPL25EM2	252	4
D564	UB09CWHA2F	2	ESPL25MJR1B1	297	4, 15
D565	UB09CCHA2F	2	ESPL35EM1	254	4, 12, 15, 17, 18
D582	UB05CWLA2F	2	ESPL35EM11-C1	254	4, 12, 15, 17, 18
D583	UB05CCLA2F	2	ESPL35EM12	254	4, 12, 15, 17, 18
D6608	H1050	11	ESPL35EM2	256	4, 15, 18
D6610	H1051	11	ESPL35EM21-C1	256	4, 15, 18
D783	OCP1024	12	ESPL35EMR1	255	4
D-801	160A	14	ESPL35EMR2	257	4
D805	OHS1016	14	ESPL35EMV25M	256	4
D863	992A	14	ESPL35EMV2M	256	4
D870	OTY1024	18	ESPOL50EM1	258	4, 12, 18
D890	OHS9983	14	ESPOL50EM13	258	4, 12, 18
DA3G096	469	16	ESPOL50EM13	289	4, 12
DA3G097	469	16	ESPOL50EM1B1	291	4, 15
E206444	9631	16	ESPOL50EM2	260	4, 12, 15, 17, 18
E206445	9632	16	ESPOL50EM26	260	4, 12, 15, 17, 18
E206447	9633	16	ESPOL50EM26	288	4, 12
E206448	9634	16	ESPOL50EM2B	285	4, 12
EM332	C01332	1	ESPOL50EM461	290	4, 12
EM333	C01333	1	ESPOL50EMJR11	276	4, 12, 18
EM334	C01334	1	ESPOL50EMJR21	276	4, 12, 18
EM335	C01335	1	ESPOL50EMR1	259	4
EM336	C01336	1	ESPOL50EMR2	261	4
EM337	C01337	1	ESPOL50EMV2	260	4, 12, 15, 17, 18
EM670	C01670	1	ESPOL60EM2	9200	4
EM671	C01671	1	ESPOL75EM2	298	4
EM672	C01672	1	F112	160A	14
EM673	C01673	1	F33HXDJ-3668	9487	18
EM675	C01675	1	F33HXGFG-2876	9488	18
EM677	C01677	1	F42A49A12	OTC1862	18
EM678	C01678	1	F42A50A12	OTC1862	18
EM679	C01679	1	F48B09A12	OTC1864	18
EM680	C01680	1	F93F41	265	5

Cross Reference

Mfg. Part No.	Stock No.	Page No.	Mfg. Part No.	Stock No.	Page No.
J65F30	270	5	S3051	174A	12, 14
JA2P216	9627	16	S3057	174A	12, 14
JA2P217	9628	16	S60BCU4L1-C1	269	5, 10
JA2P228	9629	16	S60BHG4L9R-C1	286	5
JA2P229	9630	16	S60BHU4L3-C1	270	5
JA2S149	9628	16	S60BHU4L6-C2	267	5
JA2Y030	9632	16	S60BHU4L9-C1	268	5
JA2Y031	9631	16	S60HUB2	268	5
JA65F30	268	5	S88-667	992A	14
JD65F30	264	5	SCS05001H-CPM120-3	992A	14
E2F029	9633	16	TFM1862	OTC1862	18
JE2F030	9634	16	TFM1864	OTC1864	18
K055SME164467	OHS9983	14	TFM191	9488	18
K1482	H1053	11	TFM262	9487	18
K1485	H1050	11	TFM-351	254	4, 12, 15, 17, 18
K1486	H1051	11	TFM-352	256	4, 15, 18
K379	H1050	11	X270	OTY1024	18
K380	H1051	11	X502	H1050	11
K55CLN1782	OHS10206	14	X503	H1051	11
K55ECE2645	OCP0108	12	X507	H1053	11
K55HCN4370	160A	14	X509	H1052	11
K55HXCTP9963	OHS9983	14	X513	H1050	11
K55HXJNG2974	OCP0251	12	X523	H1051	11
K55HXXGD-8330	OTC1862	18	X525	H1052	11
K55HXXGE-8331	OTC1864	18	X528	H1053	11
K55HXXWA8573	OHS10206	14	X530	H1054	11
K55HXMMF-6494	OTC1862	18	X531	H1054	11
K55HXMRC-6564	OTC1864	18			
K55HXMRD-6565	OTC1862	18			
K55HXSME-1644	OHS9983	14			
K55HXSZJ-8106	OCP0108	12			
K55HZJNJ-2976	OCP0108	12			
K6124	OCP1024	12			
K644	OHS9983	14			
K7232	160A	14			
KA55HGE8331	OTC1864	18			
KA55HXXGD8330	OTC1862	18			
KA55HXMMF6494	OTC1862	18			
KA55HXMRC6564	OTC1864	18			
KA55HXMRD6565	OTC1862	18			
LM6505	267	5			
LM69511	264	5			
LM9509	262	5			
M-2-008	160A	14			
N416CCW242	OTC1862	18			
N416CCW245	OTC1862	18			
P001-96203	OHS10206	14			
P011-96203	OHS10206	14			
PD1125	9721	9, 13			
PD1127	9721	9, 13			
PP7577M	UB05CWL2F	2, 14			
R10CW68M	683	13			
R10CW68ME	683	13			

Green Choice®

Eco - Friendly Electric Motors



Our new Green Choice® brand of motors is designed to address today's environmental concerns. A Green Choice motor saves energy by reducing the amount of electricity needed, indirectly reducing the amount of carbon dioxide emitted into the air. Carbon dioxide is thought to contribute to global warming, and coal-fired power plants emit a majority of carbon dioxide. Green Choice motors can also reduce noise and contribute to a more environmentally friendly equipment system. A Green Choice motor can save money and makes it your most eco-friendly motor choice. RoHS compliant, Green Choice motors do not contain or use certain hazardous materials in the manufacturing process contributing even more to an environmentally-friendly world.



Formerly A. O. Smith Electrical Products Company

Distribution Marketing
1325 Heil Quaker Blvd.
LaVergne, TN 37086
PH: 800-672-6495
FAX: 800-468-2062

www.centuryelectricmotor.com

©2012 Regal-Beloit Corporation Bulletin 6600A 6/2012

A Regal Brand

