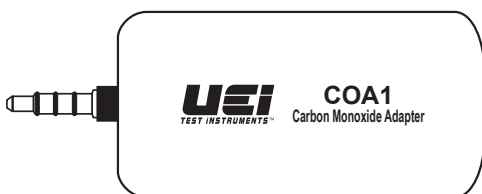


## Carbon Monoxide Detector Adapter

### INSTRUCTION MANUAL

ENGLISH



**!** REQUIRES Compatible mobile device and the FREE downloadable App, "CoChecker"

1-800-547-5740

www.ueitest.com • email: info@ueitest.com

**WARNING** **!** : The COA1 is an ambient CO detector and not intended for in-flue stream uses, to be used as personal safety device or medical applications. Refer to **IMPORTANT SAFETY WARNINGS** section for more details.

### FCC INFORMATION

**NOTE:** This device complies with Part 15 of the FCC Rules. Operation is subject to the following two conditions: (1) this device may not cause harmful interference, and (2) this device must accept any interference received, including interference that may cause undesired operations.

### INFORMATION TO THE USER

This equipment has been tested and found to comply with the limits for a Class B digital device, pursuant to part 15 of the FCC Rules. These limits are designed to provide reasonable protection against harmful interference in a residential installation. This equipment generates, uses and can radiate radio frequency energy and, if not installed and used in accordance with the instructions, may cause harmful interference to radio communications. However, there is no guarantee that interference will not occur in a particular installation. If this equipment does cause harmful interference to radio or television reception, which can be determined by turning the equipment off and on, the user is encouraged to try to correct the interference by one or more of the following measures:

- Reorient or relocate the receiving antenna.
- Increase the separation between the equipment and receiver.
- Connect the equipment into an outlet on a circuit different from that to which the receiver is connected.
- Consult the dealer or an experienced radio/TV technician for help.

**WARNING** **!** : Any changes or modifications not expressly approved by the manufacturer could void the user's authority to operate the equipment.

## IMPORTANT SAFETY WARNINGS

### WARNING

Read entire Safety Notes section regarding potential hazard and proper instructions before using this tester. In this manual the word “**WARNING**” is used to indicate conditions or actions that may pose physical hazards to the user. The word “**CAUTION**” is used to indicate conditions or actions that may damage this instrument.

### WARNING

- To ensure safe operation and service of the tester, follow these instructions. Failure to observe these warnings can result in severe injury or death.
- This meter is designed for trade professionals who are familiar with the hazards of their trade. Observe all recommended safety procedures that include use of personal protective equipment.
- Carbon monoxide is life threatening even at relatively low concentrations. Be sure you understand the risks before investigating potential leaks.
- Do not use the tester if it appears damaged.
- Always adhere to national and local safety codes.
- This COA1 is specified to read Carbon Monoxide from 1-999ppm. The app may continue to read above this threshold. Professional safety precautions are recommended above 35ppm.
- Threshold safety levels are set to industry standards. By customizing these levels to higher COppm thresholds, users risk personal safety. These setting are saved and used after exiting and relaunching the App. To reset back to industry standards set the levels to: Green ≤ **10** Orange ≤ **35** Red.

### CAUTION

- The COA1 is designed for ambient testing only. DO NOT place the instrument in flue gas or warm air streams.
- The COA1 is not designed for in-flue detection. Readings more than 999 ppm will damage the sensor in the COA1, even if readings continue above the 999ppm range.
- Ensure that the sensor vent at the top of the instrument is free from obstruction.
- When zeroing the COA1, the adapter should be in fresh air. The COA1 uses an electrochemical sensor, which are subject to long-term drift pending use and CO levels during use. Calibration services are available at UEI Recertification Centers. Call or visit us online for more information.

**NOTE:** A quick instrument check can be performed by the smoke from a blown out match. Let smoke enter the vent. This will cause the indicated CO level to increase.

## FEATURES

- **CO reading direct on your device**
- **Reads CO up to 999 ppm**
- **Detects CO to 1 ppm**
- **Use with compatible iOS® or Android™ smart devices**
- **Free App displays 3 visual danger levels**
- **App allows logging and emailing capabilities**

## GENERAL SPECIFICATIONS

- **Operating Temperature:** 32° to 104°F (0° to 40°C)
- **Dimensions:** 2.4 x 1.17 x 1.02” (61 x 30 x 26mm)
- **Item Weight:** 0.05oz
- **Battery Type:** CR2032
- **Accuracy:** ± (3% + 1 ppm)
- **App Compatibility:** iOS®; iPhone 4X and up running iOS7 and higher iPhone 7 (requires use of Lightning to 3.5mm headphone jack adapter)  
Android™; Galaxy S4, Nexus 5, HTC One running Android 4.4 or higher

**NOTE:** Requires compatible mobile device and FREE downloadable App “**CoChecker**”.

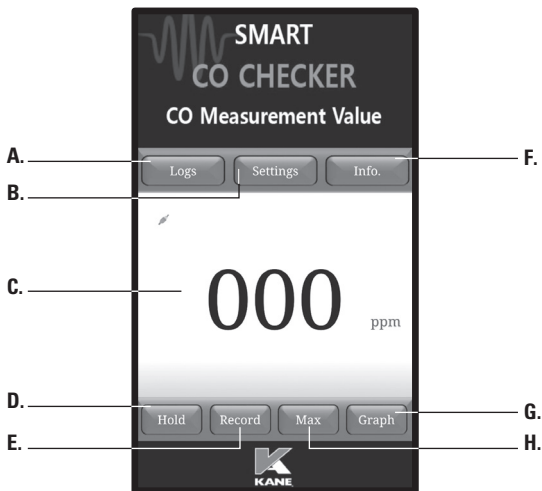
## SYMBOLS

**HOLD** Hold/Capture Value

**MAX** Maximum measured value displayed

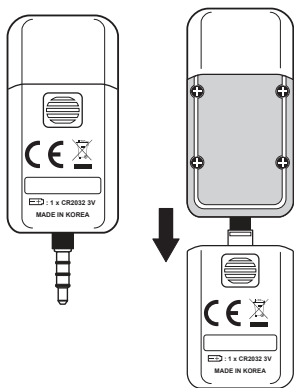
 Warning or Caution

## APP OVERVIEW



- A. Logs:** Touch the **LOGS button** to view any logs (recorded measurements). Export and individual log view summary of the measurement. Touch the **EXPORT button** to email/export results in either CSV value, Graph in PNG or Graph in JPEG. Highlight the Log to be exported. Touch the **MAIL button** to enter the recipient email address.
- B. Settings:** Touch the **SETTINGS button** to change settings: Refresh rate, Continuous recording, Max Samples and Logging Interval.
- C. Viewing Measurements:** You can easily view measurements on your mobile device.
- D. Hold:** Touch the **HOLD button** to hold the reading on the screen.
- E. Record:** Touch the **RECORD button** to record measurement test results. Touch the Record button again to end recording measurement levels of test.
- F. Info:** Touch the **INFO button** to view information about the App, including version.
- G. Max:** Touch the **MAX button** to capture the maximum values.
- H. Graph:** Touch the **GRAPH button** to see a live graph of test readings.

## BATTERY REPLACEMENT



- Slide battery cover and remove battery cover.
- Replace the old battery with 1 new (CR2032) battery.
- Replace the battery cover.

**NOTE:** The COA1 will disconnect from the device when battery levels are too low to display correct readings.

## TROUBLESHOOTING

PROBLEM	SOLUTION
The app will not connect with COA1	Check batteries in COA1
The app suddenly errors out, loses connection and is unable to reconnect	Check batteries in COA1
The app disconnects from COA1 while using other apps and is unable to reconnect	Some Android phones disconnect from the COA1 when in the background. Quit the app and relaunch. Apple phones keep connectivity in background mode.
Other apps will not work wholly or in part	Apps requiring speakers or the input jack to function may not work while COA1 is connected.
Device's phone features not working while COA1 is connect and app is in use.	Many devices require the COA1 to be disconnected to use phone services.

## DISPOSAL



**CAUTION:** This symbol indicates that equipment and its accessories shall be subject to separate collection and correct disposal.

## CLEANING

Periodically clean your adapters' case using a damp cloth. DO NOT use abrasive, flammable liquids, cleaning solvents, or strong detergents as they may damage the finish, impair safety, or affect the reliability of the structural components.

## STORAGE

Remove the batteries when instrument is not in use for a prolonged period of time. Do not expose to high temperatures or humidity. After a period of storage in extreme conditions exceeding the limits mentioned in the General Specifications section, allow the instrument to return to normal operating conditions before using it.

## WARRANTY

The COA1 is warranted to be free from defects in materials and workmanship for a period of one year from the date of purchase. If within the warranty period your instrument should become inoperative from such defects, the unit will be repaired or replaced at UEi's option. This warranty covers normal use and does not cover damage which occurs in shipment or failure which results from alteration, tampering, accident, misuse, abuse, neglect or improper maintenance. Batteries and consequential damage resulting from failed batteries are not covered by warranty.

Any implied warranties, including but not limited to implied warranties of merchantability and fitness for a particular purpose, are limited to the express warranty. UEi shall not be liable for loss of use of the instrument or other incidental or consequential damages, expenses, or economic loss, or for any claim or claims for such damage, expenses or economic loss.

Warranty only covers hardware and does not extend to software applications.

A purchase receipt or other proof of original purchase date will be required before warranty repairs will be rendered. Instruments out of warranty will be repaired (when repairable) for a service charge.

For more information on warranty and service, contact:

**www.ueitest.com • Email: info@ueitest.com  
1-800-547-5740**

This warranty gives you specific legal rights. You may also have other rights, which vary from state to state.