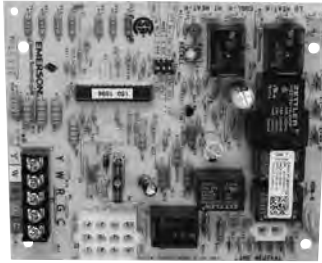


PCBBF112S
Board, Control



5-7/8" x 4-1/2"

PCBBF132S
Board, Control



5-7/8" x 5"

10735003A
Igniter, Furnace
5-1/4" leads



Has a (2) male pin connection quick disconnect

D9918202A
Igniter, Furnace
4-1/2" leads



Has a (2) male pin connection quick disconnect

C6411102
Module, Ignition
(I.D. #50E47-170)
(I.D. #50E47-843)
Hot Surface Ignition
25VAC input voltage



6 different program keys
w/ corresponding color coded timing labels
Program key determines... trial for ignition, retries, prepurge and warm-up time

RF000129
Module, Ignition
(I.D. #50A55-288-04)
Hot Surface Ignition
Prepurge: 0 sec.
Postpurge: 15 sec.
Ignition trial time: 6 sec.
Attempts: 3
Retries: 2



R0156743
Motor, Inducer
Draft Blower

Volts - 115
RPM - 3000
AMP - 1.5



Includes: pipe collar, sealer, plug, (1) 2" pvc flue pipe elbow (2) speed nuts and (1) screw
Has (1) .250" female terminal & (1) .187" female flag terminal on wire ends

RSKP0009
PTAC, Control Board Kit

This kit is designed for PTAC units that use 208/230V

Kit includes:
board, control panel, transformer, wire enclosure, 4 thermistors w/ color coded leads, 14-pin and 18-pin female housings, 18 jumper wires, 18 wire nuts, 2 screws, and 2 clips



C6437502
Sensor, Flame



1-1/2" porcelain • 2-3/8" rod
24" lead wire with a .250" female terminal

C6456508
Switch, Pressure
(I.D. #FS6111-504)

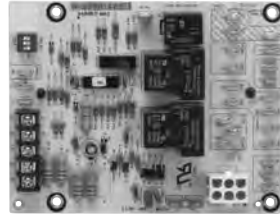


Has (3) .187" male terminals

CURRENT PRICING CAN BE FOUND ON OUR WEBSITE

All logos, trademarks, part numbers, photos & illustrations are intended solely for identification. Items offered for sale are not represented to be manufactured by the company that built the original equipment.

40403003
Board, Fan Timer
(I.D. #ST9120A)



5-3/4" x 4-1/2"

38691B001
Module, Ignition
Intermittent Ignition



Trial time: 90 sec.
Continuous retry, 100% shutoff IP

44431001
Motor, Blower
Volts - 115
RPM - 3000
HP - 1/30
AMP - 1.4
Rotation - CWLE
Single Phase



Has (2) .250" female terminals

R45037001
Motor, Blower
Volts - 115
RPM - 3400
HP - 1/30
AMP - 1.8
Rotation - CWLE
Single Phase



Has a (2) female pin connection quick disconnect

42640001
Sensor, Flame
(I.D. #Q3400A1016)



Includes a spring clip
Has a (3) female pin connection quick disconnect

S36453B001
Sensor, Flame
Overall length is 3-1/4"



Has a .250" male terminal

38492B001
Sensor, Flame



Has a 31" lead wire with a .187" female terminal end

37520B001
Switch, Roll-Out
open @ 275°F
manual reset



Has (2) .250" male terminals

38491B001
Transformer
Primary: 120 VAC
Secondary: 24 VAC
40 VA, 50/60 Hz



70L53
Valve, Combo Gas Valve & Regulator - 24V
(I.D. #SV9501H2409)
(I.D. #SV9502H2704)
Intermittent Ignition, 1/2" x 1/2"
Ignition Trial Time: 90 sec.
Retry Delay: 5 min. Prepurge: 15 sec.
Pressure Reg. Setting: Nat. Gas - 3.2" Adj. W.C.



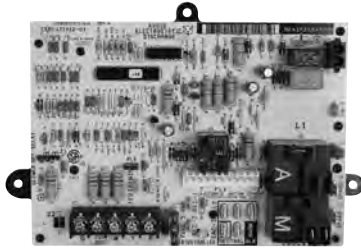
CURRENT PRICING CAN BE FOUND ON OUR WEBSITE

All logos, trademarks, part numbers, photos & illustrations are intended solely for identification. Items offered for sale are not represented to be manufactured by the company that built the original equipment.

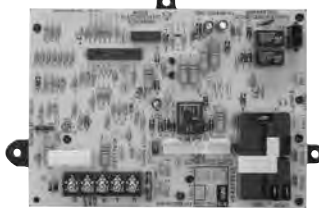
PHONE: 800-843-0903 • FAX: 800-344-1848 • WEB: www.pdqsupplyinc.com • FB: facebook.com/pdqsupplyinc

OEM HEATING PARTS

HK42FZ034
Board, Circuit

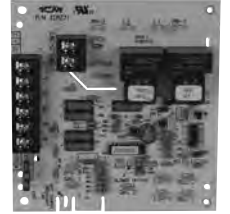


325878751
Kit, Circuit Board



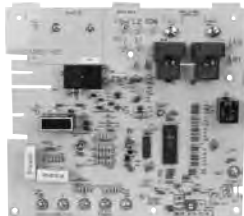
Kit includes wire harness adapter
Replaces: HK42FZ004, HK42FZ007,
HK42FZ008, HK42FZ009, HK42FZ011,
and HK42FZ016

HH84AA020
Board, Circuit
(I.D. #CES0110018)
(I.D. #ICM271C)



Time delay timings
Heat "ON" 75 sec.
Heat "OFF" 150 sec.
Cool "OFF" 90 sec.
Operating Temp: -40° to 176°
5" x 5-1/4"

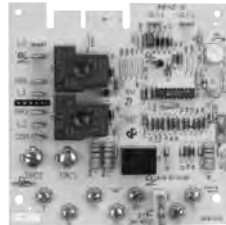
CES0110057
Board, Circuit
(I.D. #CES0110057-02)



8-1/2" x 7-1/2"

CES0110057-02 is a direct replacement for:
CES0110057, CES0110057-01, CES0110048,
CES0110020, and HH84AA016

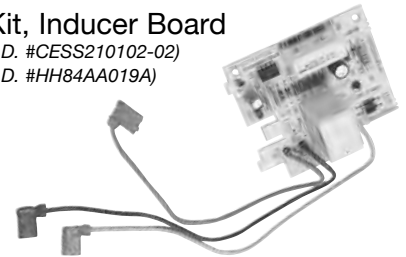
HH84AA021
Board, Circuit
(I.D. #CES0110019)



5-5/16" x 5-1/8"

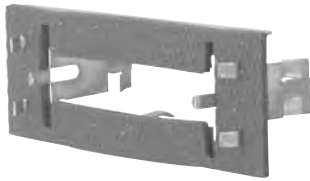
HH84AA021 is a direct replacement for:
HH84AA001, HH84AA003, HH84AA005,
HH84AA009, HH84AA014, HH84AA015 or
CES0110019

313680751
Kit, Inducer Board
(I.D. #CESS210102-02)
(I.D. #HH84AA019A)



Kit includes: board, (2) .250" & (2) .187"
female flag quick connect terminals
(2) .187" terminal tabs, red wire,
snap bushing, wire ties and labels

323901701
Bracket, Igniter
3" x 1-1/8"



310092751
Burner
24-5/8" overall length
Tapers from 2" to 1-3/8"



P2910753
Capacitor, Run
Volts: 370
MFD: 7.5



P2910503
Capacitor, Run
Volts: 370
MFD: 5



LH33WZ513
(I.D. #1007-200) Black (shown)
100% lockout w/20 sec. prepurge

LH33WZ512
(I.D. #1007-100) Gray
100% lockout

Control, Igniter
Lockout
24 VAC - 60 Hz
Lockout Time: 5 min.



CURRENT PRICING CAN BE FOUND ON OUR WEBSITE

All logos, trademarks, part numbers, photos & illustrations are intended solely for identification. Items offered for sale are not represented to be manufactured by the company that built the original equipment.

HY10LF286

Fuse
2-1/8" overall length



Has a .250" female terminal

LH680512

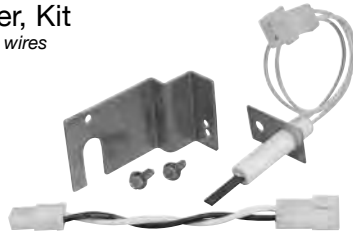
Electrode
(I.D. #AM11)



Used with pilot burners

332505751

Igniter, Kit
9" lead wires



(2) male pin connection quick disconnect
5" extension wire with (2) male and (2) female pin connection quick disconnects

LH33ZG001

Igniter, Hot Surface
9" lead wires



(2) male pin connection quick disconnect
If replacing this igniter for the first time, you must buy the kit #332505751

LH33ZS004

Igniter, Hot Surface
5-1/2" lead wires



(2) male pin connection quick disconnect

LH33WZ510

Module, Spark Ignitor
(I.D. #990-516)
24 Volt



Has (2) .250" & (1) .187" male terminals

HC41AE117

Motor, Blower
Volts - 115
RPM - 1075
H.P. - 1/3
48 Frame
Sleeve Bearing
Rotation - CCWLE



HC37AE114

Motor, Blower
Amps - 2.9
Volts - 115
RPM - 1075
H.P. - 1/5
48 Frame
Sleeve Bearing
Rotation - CCW



Has (2) .250" female flag terminals, (3) .250" female terminals, (1) .187" female terminal

HC37MA135

Motor, Blower Shaded Pole
(I.D. #OCB6427)
Volts - 115
RPM - 1050, 4 speed
H.P. - 1/5
Single Phase
Frame - 42Y
Sleeve Bearings
Rotation - CCWLE

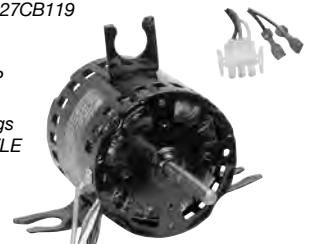


Has a single male pin connection quick disconnect

Disconnect on wire ends

325270761

Motor, Draft Inducer
Replaces # HC27CB119
Volts - 115
RPM - 3300
H.P. - 50 MHP
Single Phase
Sleeve Bearings
Rotation - CWLE



Disconnect & terminals on wire ends

Includes fan inducer kit
Has (2) .187" female terminals and a (3) female pin connection quick disconnect

320725756

Motor, Inducer
Volts - 115
RPM - 3300
H.P. - 1/16
Single phase



Has a (3) female pin connection quick disconnect

326628761

Motor, Inducer
Amps - 4.9
Volts - 115
RPM - 1075
H.P. - 1/3
Speed - 4
48 Frame
Rotation - CCW



Has (7) female flag quick disconnects

318984753

Motor, Inducer Kit
115V
1.8 amps
3300 rpm
1-7/8" shaft



LA660002

Blade, Fan only
3-1/2" dia blade
Clip included



Motor kit also includes:
(1) Molex & (1) AMP harness adapters

CURRENT PRICING CAN BE FOUND ON OUR WEBSITE

All logos, trademarks, part numbers, photos & illustrations are intended solely for identification. Items offered for sale are not represented to be manufactured by the company that built the original equipment.

PHONE: 800-843-0903 • FAX: 800-344-1848 • WEB: www.pdqsupplyinc.com • FB: facebook.com/pdqsupplyinc

OEM HEATING PARTS

LH31AM002

Pilot, Burner
(Style #Q350A)



Orifice size: .12"
Natural gas

LH680005

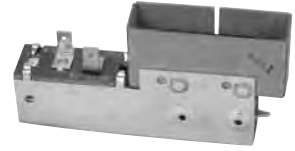
Pilot, Burner
(Style #740A)



Has (3) 8" leads with
quick disconnect attached

HN680001

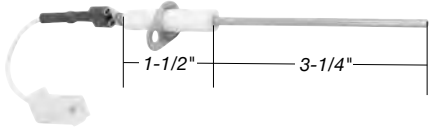
Relay, Time Delay



SPST
Operating Volts: 24
Time delay on: 75 sec.
Time delay Off: 135 sec.

LH680013

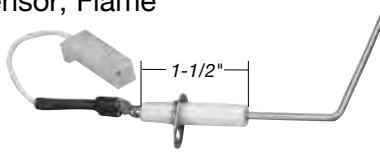
Sensor, Flame



Sensor has (1) .250" male terminal
4-3/4" lead w/ (1) .250" female terminal
end and a single male pin connection
quick disconnect

LH680014

Sensor, Flame



Sensor has (1) .250" male terminal
4-3/4" lead w/ (1) .250" female terminal
end and a single male pin connection
quick disconnect

HR54ZA006

Switch, Door



Has (2) .250" male terminals

HR54ZA101

Switch, Door Interlock
15 amp



Has (2) .250" male terminals

HH18HA416

Switch, Draft Safety
open @ 215°F
manual reset



Has (2) .250" male terminals

HH18HA195

Switch, Fan & Limit
open @ 195°F
close @ 155°F
manual reset



Has (2) .250" male terminals

HH18HA350

open @ 350°F, manual reset

HH18HA291

open @ 290°F, manual reset

Switch, Limit



Has (2) .250" male terminals

HH12ZB160

open @ 160°F - close @ 120°F

HH12ZB170

open @ 170°F - close @ 130°F

HH12ZB180

open @ 180°F - close @ 140°F

HH12ZB190

open @ 190°F - close @ 150°F

Switch, Limit
3" insert

HH12ZB200

open @ 200°F - close @ 160°F

HH12ZB220

open @ 220°F - close @ 180°F

HH12ZB240

open @ 240°F - close @ 200°F

HH12ZB250

open @ 250°F - close @ 210°F



Has (2) .250" male terminals

HK06WC012

Switch, Pressure
(I.D. #FS6004-251)



Has (2) .250" male terminals and
(1) .187" male terminal

HK06WC090

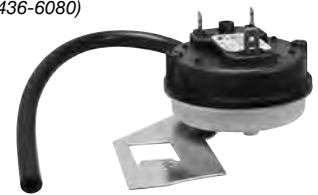
Switch, Pressure
(I.D. #IS20130-3288)



Has (2) .250" male terminals

HK06WC097

Switch, Pressure
(I.D. #IS20436-6080)



.18" W.C.
Has (2) .250" & (1) .187" male terminals

CURRENT PRICING CAN BE FOUND ON OUR WEBSITE

All logos, trademarks, part numbers, photos & illustrations are intended solely for identification. Items offered for sale are not represented to be manufactured by the company that built the original equipment.

PHONE: 800-843-0903 • FAX: 800-344-1848 • WEB: www.pdqsupplyinc.com • FB: facebook.com/pdqsupplyinc

HK06NB065

Switch, Pressure
(I.D. #FS3262-1098)



Has (2) .250" male terminals

HK06NB124

Switch, Pressure



Has (1) .250" male terminal
and (1) .187" male terminal

HH18HA166

Switch, Temperature
open @ 160°F
manual reset



Has (2) .250" male terminals

HH11AZ180

Switch, Vent Safety
open @ 180°F
manual reset



Has (2) .250" male terminals

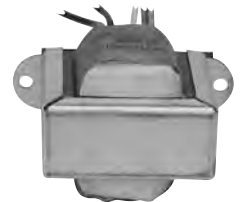
HT01BC116

Transformer
Primary: 120 Volt
Secondary: 24 Volt
50/60 Hz, 40 VA



HT01CN001

Transformer
Primary: 120 Volt
Secondary: 24 Volt
50/60 Hz, 40 VA



EF32CW233

Valve, Gas
24V, 1/2" x 3/4"

NEW



Nat. gas: 3.5 W.C.

EF660015

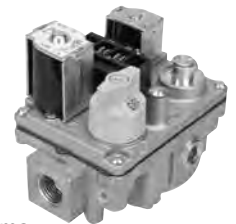
Valve, Dual Combination Gas
(I.D. #36J24-510)
24V, 3/4" x 3/4"



Pressure Rating:
14" W.C. (1/2 PSI) max.
Pressure Regulator Setting:
Nat. Gas - 3.5 W.C.

EF32CW190

Valve, Dual Combination Gas
(I.D. #36E36-304)
24V, 1/2" x 3/4"



Ambient Temp:
-40° to 175°F
Pressure Rating:
14" W.C. (1/2 PSI) max.
Pressure Regulator Setting:
Nat. Gas - 2.5 to 5.0" W.C.
L.P. Gas - 7.0 to 12.0" W.C.

EF32CB212

Valve, Dual Combination Gas
(I.D. #VR8200H-1251)
24V, 1/2" x 1/2"



Controls include: manual valve,
two automatic operators, servo
pressure regulator and pilot adjustment
Natural to L.P. gas conversion kit

LA11AA005

Wheel, Blower



Height: 1-7/16"
Diameter: 4"
CW rotation - hub end

CURRENT PRICING CAN BE FOUND ON OUR WEBSITE

All logos, trademarks, part numbers, photos & illustrations are intended solely for identification. Items offered for sale are not represented to be manufactured by the company that built the original equipment.

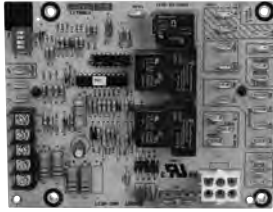
PHONE: 800-843-0903 • FAX: 800-344-1848 • WEB: www.pdqsupplyinc.com • FB: facebook.com/pdqsupplyinc

OEM HEATING PARTS

1170063

Control, Fan Timer

(I.D #ST9120C5013)
5-13/16" X 4-1/2"



1149501

Control, Fan & Limit

8" insert
Limit Stop: 170°F
Fan On: 125°F
Fan Off: 100°F



1005651

Module, Ignition

(I.D #S8600M)
Ignition trial time: 90 sec.
IAP: 100% shut off
Prepurge: 0 sec.
Retries: continuous



1096048

Igniter, Hot Surface

5-1/4" lead wires

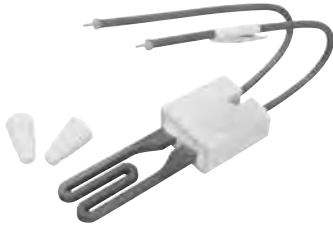


Includes mounting bracket. Has (2) male pin connection quick disconnect

1148245

Igniter, Hot Surface

5" leads w/ stripped wire ends



Includes porcelain wire nuts

1013833

Motor, Blower

Volts - 115
AMP - 1.6
RPM - 3000



Replaces # 1010975

1011350

Motor, Blower

Volts - 115
Amps - 0.8
RPM - 3450



Has (3) .250" and (1) .187" female terminals

1006168

Motor, Blower Kit

Volts - 115, 60Hz
Amps - .9
RPM - 3300
Rotation - CCW
HP - 1/60



Kit contains:
(1) blower assembly, (1) blower gasket,
(1) .250" and (1) .187" female flag terminals,
(2) flag terminal insulators, (1) tube of RTV sealant

1010239

Motor, Combustion Air Blower

Volts - 115
Amps - 0.8
RPM - 2350



Lead ends have (2) male pin connections

1164280

Motor, Inducer Blower

Volts - 115
AMP - 2.3
RPM - 3400
HP - 1/25



Has (2) .250" male terminal connections

CURRENT PRICING CAN BE FOUND ON OUR WEBSITE

All logos, trademarks, part numbers, photos & illustrations are intended solely for identification. Items offered for sale are not represented to be manufactured by the company that built the original equipment.

PHONE: 800-843-0903 • FAX: 800-344-1848 • WEB: www.pdqsupplyinc.com • FB: facebook.com/pdqsupplyinc

1149856

Pilot, Burner
(I.D. #Q3450C1045)



Has a (3) female pin connection quick disconnect attached to wire ends

1149944

Pilot, Burner



"B" mounting
"L" tip style

1380687

Sensor, Flame
1-1/2" porcelain
2" rod



Has a .250 male terminal

1009524

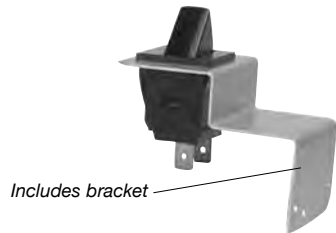
Assembly, Flame Sensor
(I.D. #Q3400A1040)



Includes spring clip
Has a (3) female pin connection quick disconnect attached to wire ends

1010712

Switch, Interlock



Includes bracket

Has (2) .250" male terminals

607900

Switch, Interlock



Has (2) .250" male terminals

34333002

Switch, Limit
open @ 300°F
close @ 280°F



Has (2) .250" male terminals

1013102

Switch, Limit
open @ 130°F
manual reset



Has (2) .250" male terminals

1174276

Switch, Pressure
(I.D. #IS20213-5216)



.59" W.C.
Has (2) .250" male terminals

1170003

Transformer
(I.D. #4000Y01E07AE191)
Primary: 120 VAC
Secondary: 24 VAC
40 VA, 50/60 Hz



Has (4) 12" leads with .250" female terminals on one end and are stripped on the other ends

1170429

1170430 Has L.P. gas conversion kit
Valve, Gas & Regulator Combo

(I.D. #SV9501M2718)
(I.D. #SV9501M2056)
24V, 1/2" x 1/2"
Intermittent Ignition
Ignition trial time: 90 sec.
Retry Delay: 5 min.



CURRENT PRICING CAN BE FOUND ON OUR WEBSITE

All logos, trademarks, part numbers, photos & illustrations are intended solely for identification. Items offered for sale are not represented to be manufactured by the company that built the original equipment.

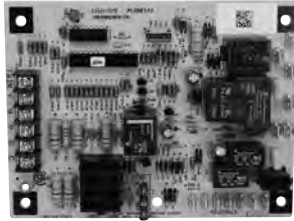
PHONE: 800-843-0903 • FAX: 800-344-1848 • WEB: www.pdqsupplyinc.com • FB: facebook.com/pdqsupplyinc

OEM HEATING PARTS

PCBBF132S

Board, Control

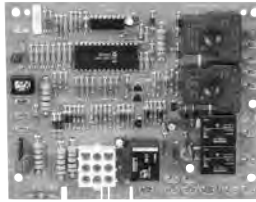
5-7/8" x 4-1/2"



1809913S

Board, Circuit

5-13/16" x 4-1/2"

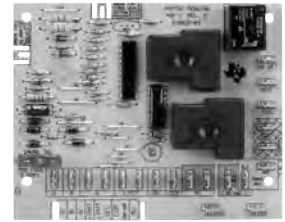


Includes: a (2) wire, 9 pin connector wire and (R, W & G) thermostat wires
This is a direct replacement for:
B18099-06, B18099-08, B18099-10

B1809904

Board, Blower Control

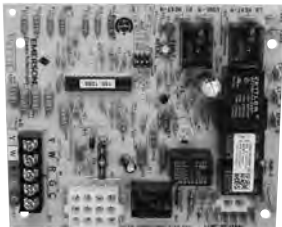
4-13/16" x 3-7/8"



PCBBF122S

Board, Control

5-7/8" x 5"



B945672

Capacitor

Volts - 370
MFD - 12.5



B1370155

Control, Limit

open @ 120°F
close @ 90°F



Has (2) .250" male terminals

B1497204

Cut-Off,
Thermal Energy
(I.D. #TF144C)



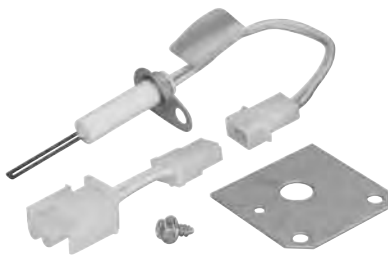
Has (2) .250" male terminals

0230K000001

Igniter, Mini Conversion Kit

20165703S

Igniter Only



Manufacturer uses this to replace #B1401018S
5-1/4" leads with a (2) male pin connection quick disconnect

B1401018S

Igniter, Hot Surface

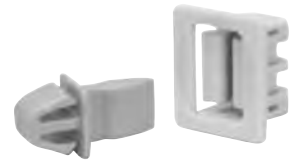
6" leads



"FLAT" type igniter with a (2) male pin connection quick disconnect

B13921KIT

Kit, Door Latch



0131M00002S

Motor, Draft Inducer

Volts - 115
RPM - 3000
H.P. - 1/50



B1859005

Motor, Draft
Inducer Blower

Volts - 115, 60Hz
RPM - 3000

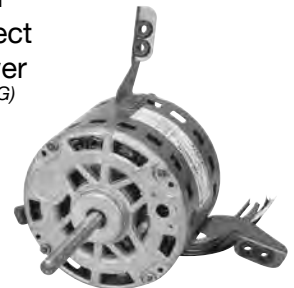


Has (2) .250" male terminals

B1340021

Motor, Direct
Drive Blower

(G.E. #5KCP39FG)
Volts - 115
RPM - 1050
Rotation - CCW
H.P. - 1/3
Single Phase



Has (6) .250" female terminals

CURRENT PRICING CAN BE FOUND ON OUR WEBSITE

All logos, trademarks, part numbers, photos & illustrations are intended solely for identification. Items offered for sale are not represented to be manufactured by the company that built the original equipment.

PHONE: 800-843-0903 • FAX: 800-344-1848 • WEB: www.pdqsupplyinc.com • FB: [facebook.com/pdqsupplyinc](https://www.facebook.com/pdqsupplyinc)

B1401003S

Pilot, Burner



Has a .250" female terminal and a 37" lead wire with a female pin connection

0130F00010

Sensor, Flame

1" porcelain
2-1/16" rod



Has a .250" male terminal

B1370819

Switch, Door



Has (2) .250" male terminals

1370908S

open @ 160°F close @ 130°F

B1370912

open @ 240°F close @ 210°F

Switch, Limit



Both have 7" insert and (2) .187" male terminals

B1370108

Switch, Limit

open @ 328°F
manual reset



Has (2) .250" male terminals

B1370145

Switch, Limit

open @ 300°F
manual reset



Has (2) .250" male terminals

B1370142

Switch, Pressure

.060" WC



Has (2) .250" male terminals

B1370133

Switch, Pressure

1/10 HP



1/10 HP.
Has (2) .250" male terminals

B1370154

Switch, Roll Out

open @ 350°F
manual reset



Has (2) .250" male terminals

B1370106

Switch, Spillage

open @ 275°F
manual reset



Has (2) .250" male terminals

B1370110

Switch, Spillage

open @ 330°F
manual reset



Has (2) .250" male terminals

B1141605

Transformer

Primary: 120 Volt
Secondary: 24 Volt
50/60 Hz, 40VA



Has (4) .250" male terminals
Includes (2) 12" jumper wires

B1282628

Valve, Gas - 24V

(I.D. #36G22Y)
1/2" x 1/2"
Max. Pressure: 1/2" PSI
Reg: 3.5" W.C.



CURRENT PRICING CAN BE FOUND ON OUR WEBSITE

All logos, trademarks, part numbers, photos & illustrations are intended solely for identification. Items offered for sale are not represented to be manufactured by the company that built the original equipment.

PHONE: 800-843-0903 • FAX: 800-344-1848 • WEB: www.pdqsupplyinc.com • FB: facebook.com/pdqsupplyinc

PARTS LIST BY MODEL		MODELS: GUI, GUN, GUP, GUP1																																					
DESCRIPTION	PART #	GUI0502	GUI0752	GUI0753	GUI0754	GUI0002	GUI1003	GUI1004	GUI1253	GUI1254	GUI1255	GUI1255A	GUI1505	GUN0402	GUN502B	GUN0603	GUN0753	GUN0753B	GUN1004	GUN1004B	GUN1255	GUN1255B	GUP0402	GUP0502A	GUP0603	GUP0733A	GUP0804	GUP1004A	GUP1005	GUP1155	GUP1205A	GUP10503	GUP10753	GUP10754	GUP11004	GUP11205			
Manifold	B18264-01	1	1	1										1											1	1													
Manifold	B18264-02					1	1	1							1	1										1	1										1	1	
Manifold	B18264-03							1	1	1	1							1										1	1									1	
Manifold	B18264-04												1																1										
Manifold	B18264-16													1																									
Manifold	B18264-17																	1																					
Manifold	B18264-18																		1																				
Manifold	B18264-19																					1																	
Motor	B13400-20	1	1	1			1		1						1	1	1	1	1	1				1	1			1	1							1	1		
Motor	B13400-21			1		1	1	1						1	1										1	1								1	1				
Motor	B13400-22								1				1									1	1							1									
Motor	B13400-23S											1															1	1										1	1
Motor Mount Band	B13768-51								1			1	1									1	1							1								1	
Motor Mount Arm	B13768-60(3)									1																													
Motor Mount Arm	B13768-59(3)										1											1	1							1								1	
PC Board	B18099-04																	1	1	1														1	1	1	1	1	
Pilot Assembly	B14010-03S	1	1	1	1	1	1	1	1	1	1	1	1	1	1	1	1	1	1	1	1	1	1	1	1	1	1	1	1	1	1	1	1	1	1	1	1	1	1
Sequencer	B12565-51														1	1		1	1																				
Stack Switch	B13701-09														1	1	1	1	1	1	1	1	1																
Vent Limit Switch	B13701-06	1		1	1																																		
Vent Limit Switch	B13701-10		1					1	1																														
Vent Limit Switch	B13701-08					1	1	1					1	1	1	1	1	1	1	1	1	1	1																
Vent Motor	B18590-01S													1	1	1	1	1	1	1	1	1	1																
Vent Motor	B18590-00																							1	1	1	1	1	1	1	1	1	1	1	1	1	1	1	1
Vent Motor Relay	B13707-51																							1	1	1	1	1	1	1	1	1	1	1	1	1	1	1	1
Heat Exchanger	18212-07S	1																						1	1														
Heat Exchanger	18212-08S		1	1																						1	1												
Heat Exchanger	18212-02S				1																																		
Heat Exchanger	18212-10S					1	1	1																			1	1											1
Heat Exchanger	18212-11S							1	1	1	1																		1	1									1
Heat Exchanger	18212-13S												1																										
Heat Exchanger	18212-24S													1																									
Heat Exchanger	18212-28S														1																								
Heat Exchanger	18212-25S															1	1																						
Heat Exchanger	18212-29S																	1																					
Heat Exchanger	18212-26S																																						
Heat Exchanger	18212-30S																																						
Heat Exchanger	18212-27S																																						
Heat Exchanger	18212-31S																																						
Heat Exchanger	18212-37S																																					1	

OEM HEATING PARTS

PARTS LIST BY MODEL		GMCN, GPD, GMP, GUE, GMPN, GSU, GMPV																																							
DESCRIPTION	PART #	GMCN003	GMCN004	GMCN1004	GMCN206	GMP003	GMP0753	GMP0754	GMP003	GMP1004	GMP1005	GMP1254	GMP1256	GMP1505	GMPN0403	GMPN0803	GMPN0804	GMPN1004	GMPN206	GMPN075	GMPV100	GMPV125	GPD003	GPD0753	GPD1004	GPD1254	GUE002	GUE003	GUE0803	GUE0804	GUE1005	GUE1205	GSU003	GSU0804	GSU1004						
Air Pressure Switch	B13701-26					1			1	1	1	1	1								1	1	1		1	1															
Air Pressure Switch	B13701-33						1	1													1																1				
Air Pressure Switch	B13701-42														1																										
Air Pressure Switch	B13701-48	1														1	1																								
Air Pressure Switch	B13701-50		1	1	1													1	1	1																					
Air Pressure Switch	B13701-56																																				1				
Air Pressure Switch	B13701-57																																			1	1	1			
Air Pressure Switch	B13701-58																																				1				
Air Pressure Switch	B13701-59																																				1	1			
Air Pressure Switch	B13701-60																																				1				
Auxiliary Limit Switch	B13701-11	1	1	1	1																																				
Auxiliary Limit Switch	B13701-55					1	1	1	1	1	1	1	1	1							1	1	1	1	1	1	1														
Blower Housing	14393-89																											1													
Blower Housing	14393-77																											1	1			1									
Blower Housing	14393-91																																								
Blower Housing	18393-01	1																																			1				
Blower Housing	18393-00																																				1				
Blower Housing	25393-00		1			1	1								1	1	1								1	1										1					
Blower Housing	25393-01			1				1	1	1				1				1	1	1						1											1				
Blower Housing	25393-02										1		1									1	1																		
Blower Housing	25393-03				1							1															1														
Blower Wheel	B13680-34S	1			1	1	1								1	1	1							1	1			1	1							1	1				
Blower Wheel	B13680-16		1					1	1	1								1																			1				
Blower Wheel	B13680-00										1		1														1														
Blower Wheel	B13680-47A			1																																	1				
Blower Wheel	B13680-46				1										1																						1				
Blower Wheel	B13680-42																											1													
Blower Relay	B13707-52																											1	1	1	1	1	1	1							
Burner Assembly	B18225-00S																											1	1												
Burner Assembly	B18225-01S																													1											
Burner Assembly	B18225-07S																														1										
Burner Assembly	B18225-08S																																				1				
Burner Assembly	B18225-09S																																				1				
Burner (Inshot) Assembly	25227-03S	3	4	5	6	2	3	3	4	4	4	5	5	6	2	3	4	5	6	3	4	5	2	3	4	6										3	4	5			
Capacitor	B9456-72	1				1	1		1		1		1		1	1												1	1								1				
Capacitor	B9456-52		1	1				1		1		1															1	1	1	1	1							1	1		
Capacitor	B9456-53				1																																	1			
Chimney	B25235-00					1	1	1	1	1	1	1	1	1							1	1	1	1	1	1	1														
Door Switch	B13708-20					1	1	1	1	1	1	1	1	1	1	1	1	1	1	1	1	1	1	1	1											1	1	1			
Door Switch	B13708-19																											1	1	1	1	1	1	1	1						
Door Switch	B13708-19	1	1	1	1																					1	1	1	1												
Energy Cut Off	B14972-04																											1	1	1	1	1	1	1	1						
Fan Limit Switch	B13701-21																											1	1									1			
Fan Limit Switch	B13701-20																																					1	1		
Fan Limit Switch	B13701-18																																					1			
Flame Sensor	O130F00010	1	1	1	1	1	1	1	1	1	1	1	1	1	1	1	1	1	1	1	1	1	1	1	1	1	1	1	1	1	1	1	1	1	1	1	1				
Gas Valve	B12826-06 (NLA)																												1									1			
Gas Valve	B12826-07																																					1			
Gas Valve	B12826-28					1	1	1	1	1	1	1	1	1																											
Gas Valve	B12826-28	1	1	1	1										1																							1	1	1	
HSI Ignitor Assembly	B1401018S	1	1	1	1	1	1	1	1	1	1	1	1	1	1	1	1	1	1	1	1	1	1	1	1	1	1	1	1	1	1	1	1	1	1	1	1				
HSI Module Board	18099-10	1	1	1	1																																				
HSI Module Board	18099-12																																						1	1	1
HSI Module Board	18099-13S					1	1	1	1	1	1	1	1	1	1	1	1	1	1	1	1	1	1	1	1	1	1	1	1	1	1	1	1	1	1	1	1	1			
Ignition Module	B13707-24																											1	1	1	1	1	1	1	1	1	1	1	1		
Load Center Transformer	B11417-02																											1	1	1	1	1	1	1	1	1	1	1	1		
Heat Exchanger	25213-00S					1																																			
Heat Exchanger	25213-01S						1																																		
Heat Exchanger	25213-05S							1														1																			
Heat Exchanger	25213-02S								1	1																															
Heat Exchanger	25213-06S										1																														
Heat Exchanger	25213-03S											1	1																												
Heat Exchanger	2513-04S													1																											

OEM HEATING PARTS

83M00

Board, Control Kit

7-9/16" x 5-3/4"

Includes ignition control adapter plate, ignition cable, (2) wiring harnesses, switch, (4) plastic hole plugs and wiring schematic stickers



17W82

Board, Ignition Control

6-1/4" x 5-15/16"

Includes a 6" continuous fan jumper wire with a .250" female terminal & a .250" female/male piggy back terminal end



19W94

Board, Ignition Control

6-3/16" x 5-15/16"

Includes ignition control adapter plate, ignition cable, (2) wiring harnesses, wire nuts, #8-18x1/2 self-drill, self-tap screws, wiring schematic stickers, diagnostic sticker and unused hole stickers

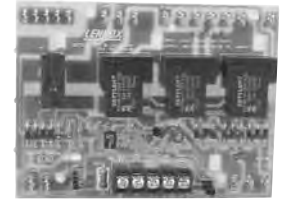


48K98

Center, Control

5-5/8" x 4-3/16"

Includes blue wire with .187" female terminal and wire nut



13H70

7" insert (FALTS57E-25T-110-200)

13H72

7" insert (FALTS57C-05T-110-120A)

Control, Fan & Limit



15P37

Control, Fan & Limit

5" insert

Limit Stop: 200°F

Fan On: 120°F

Fan Off: 90°F



30W33

Control, Ignition Conversion Kit

Trial time: 90 sec.

Prepurge: 30 sec.

Continuous retry

Kit includes: ignition control, flame sensor, wires, wire nuts, insulated 1/4" quick connect, control bracket, (4) #8 16 x 1/2" screws, wiring diagram & diagnostic code label



41K56

Igniter, Hot Surface

12" leads



Has a (2) female pin connection quick disconnect

97H0401

Module, Replacement Ignition

(I.D. #SP745-NU-3-60-5)

Lockout Model

(3) 60 sec. tries for ignition

with 5 min. between tries

Goes into lockout after 3rd ignition try



CURRENT PRICING CAN BE FOUND ON OUR WEBSITE

All logos, trademarks, part numbers, photos & illustrations are intended solely for identification. Items offered for sale are not represented to be manufactured by the company that built the original equipment.

PHONE: 800-843-0903 • FAX: 800-344-1848 • WEB: www.pdqsupplyinc.com • FB: [facebook.com/pdqsupplyinc](https://www.facebook.com/pdqsupplyinc)

26G42

Motor

(I.D. #7121-6112)
Volts - 115
RPM - 3200
Amp - 1.5
H.P. - 1/30
Shaft - 2"



Has (1) .250" female terminal and (1) stripped wire end

68K21

Motor, Blower Assembly

67K04 NEW

Motor, Blower (only)

Volts - 115
Amps - 1.8
RPM - 3400



2 wires with a (2) female pin connection quick disconnect
Includes orifices, blower gasket and screws

67M69

Motor, Blower

Volts - 115
Amps - 1.5
H.P. - 1/30
RPM - 3200



Has (1) .250" female terminal and (1) stripped wire end

51H74

Motor, Damper Door

110V



Has (2) 7-1/2" leads w/ female pin connectors

60L21

Motor, Direct Drive Blower

Volts - 115
Amp - 5.1
RPM - 1075
H.P. - 1/3
Shaft - .5 x 4
4 Speed
Rotation - CCW
Frame - 48Y
Single phase, sleeve bearing



60L22

Motor, Direct Drive Blower

Volts - 115
RPM - 1075
H.P. - 1/2
Shaft - .5 x 3.25
5 Speed
Rotation - CCW
Frame - 48Y
Single phase, sleeve bearing



Has (8) .250" female terminals

89C37

Motor, Direct Drive Blower

(I.D. #P89662)
Volts - 115
RPM - 1050
Amps - 7.60
Rotation - CW
H.P. - 1/5
Single Phase

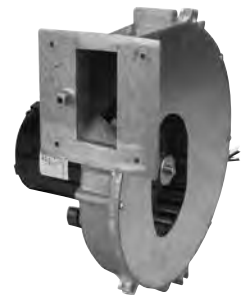


Includes: bracket adapter kit
Has (4) .250" female terminals

67M68

Motor, Draft Inducer

(Model LB-55074AA)
Volts - 115
Amps - 1.5
H.P. - 1/30
RPM - 3200



Has (1) .250" female terminal and (1) stripped wire end

24W95

Motor, Inducer

Volts - 115
Amps - 1.75
RPM - 3000



2 wires with quick disconnect and .250" male terminals

80C93

Motor, Purge

CCW Rotation
Volts - 120
RPM - 3000



Has (2) .250" male terminals

CURRENT PRICING CAN BE FOUND ON OUR WEBSITE

All logos, trademarks, part numbers, photos & illustrations are intended solely for identification. Items offered for sale are not represented to be manufactured by the company that built the original equipment.

PHONE: 800-843-0903 • FAX: 800-344-1848 • WEB: www.pdqsupplyinc.com • FB: facebook.com/pdqsupplyinc

18G90 Pilot, Burner



Has a 25" lead with (1) .250" female terminal

66C67 Relay, Switching

Coil: 24 VAC
50/60 Hz



Has (10) .250" male terminals

33F37 Sensor, Flame

15/16" tip length



Has a .250" male terminal

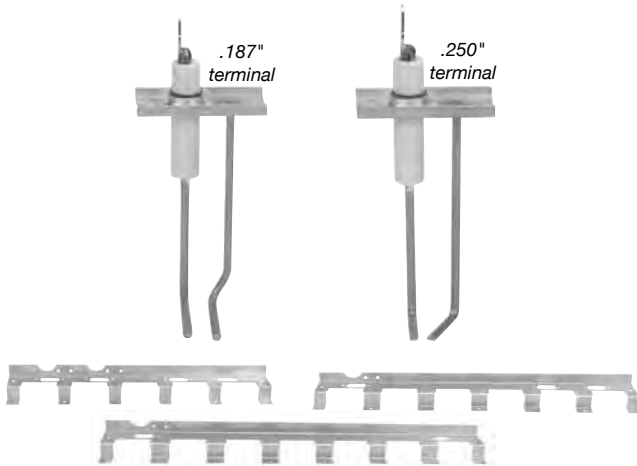
18G8901 Sensor, Flame

3-1/4" overall length



Has a .250" male terminal

62K50 Sensor, Flame Kit



Kit contains:
burner mounting brackets, ignitor w/ .250" male terminal,
dual rod flame sensor w/ .187" male terminal, ground wire
and (4) #8-18x 1/2 screws

51M14 Sensor, Flame



Has a .187" male terminal

26H61 Switch, Damper



26H66 Switch, Limit

open @ 175°F
close @ 145°F
3" insert



Has (2) .250" male terminals

87F16 Switch, Limit

open @ 140°F
close @ 110°F
3" insert



Has (2) .250" male terminals

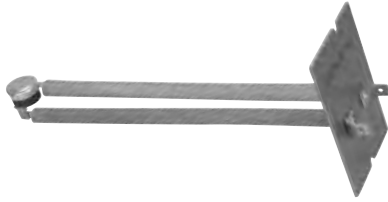
CURRENT PRICING CAN BE FOUND ON OUR WEBSITE

All logos, trademarks, part numbers, photos & illustrations are intended solely for identification. Items offered for sale are not represented to be manufactured by the company that built the original equipment.

PHONE: 800-843-0903 • FAX: 800-344-1848 • WEB: www.pdqsupplyinc.com • FB: [facebook.com/pdqsupplyinc](https://www.facebook.com/pdqsupplyinc)

49L03

Switch, Limit
 open @ 200°F
 close @ 170°F
 7" insert



Has (2) .250" male terminals

20J83

Switch, Limit
 open @ 165°F



Has (2) .250" male terminals

33J89

Switch, Pressure
 (I.D. #FS6746-1657)
 .46" WC



Has (2) .250" male terminals

26H78

Switch, Roll-Out
 open @ 260°F
 Manual reset



Has (2) .250" male terminals

38631

Transformer
 Primary: 120 Volt
 Secondary: 24 Volt
 Capacity: 30 VA



78H55

Transformer
 Primary: 120 Volt
 Secondary: 24 Volt
 Capacity: 30 VA



Has (2) .250" & (2) .187" male terminals

85A66

Valve & Regulator,
 Dual Combination Gas

24V
 1/2" x 3/4"



41K35

Valve & Regulator,
 Dual Combination Gas

(I.D. #VR8204H1048)
 24V
 1/2" x 1/2"



70L53

Valve & Regulator, Dual Combination Gas

(I.D. #SV9501H2409)
 (I.D. #SV9502H2704)
 24V

1/2" x 1/2"
 Intermittent Ignition
 Ignition Trial Time: 90 sec.
 Pressure Reg. Setting:
 Nat. Gas - 3.2" Adj. W.C.
 Retry Delay: 5 min. Purge: 15 sec.



CURRENT PRICING CAN BE FOUND ON OUR WEBSITE

All logos, trademarks, part numbers, photos & illustrations are intended solely for identification. Items offered for sale are not represented to be manufactured by the company that built the original equipment.

PHONE: 800-843-0903 • FAX: 800-344-1848 • WEB: www.pdqsupplyinc.com • FB: facebook.com/pdqsupplyinc

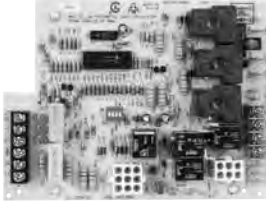
OEM HEATING PARTS

622408482

Board, Control

(I.D. #1012-920A)

7-5/8" x 5-3/4"



This is a direct replacement for:
62-22694-01, 02, 03, 11, 12, 82, 83, 91
62-22737-06, 07, 08, 10, 87, 88
62-24044-01, 81, 91 62-24045-01, 62-24046-01
62-24084-01, 02, 71, 91, 92

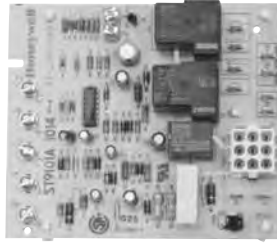
Furnace units built before the 32nd week of 1994 (3294) may require ordering flame sensor kit #622404471.

472282783

Board, Control

(I.D. #ST101A1014)

5-1/4" x 4-1/2"

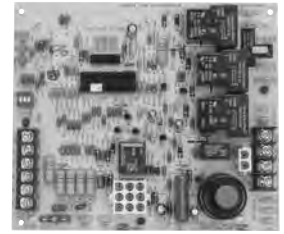


622414004

Board, Ignition Control

(I.D. #1028-928A)

5-3/4" x 6-11/16"



Replaces #62-24140-02

472244501

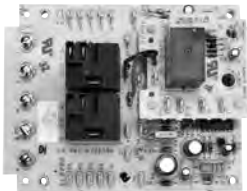
Board, Fan Control

On 30, 60, 105 sec.

Off 90, 120, 150 sec.

24/120V

ESX 695-211



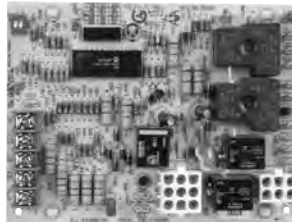
622426801

Board, Ignition Control

24/120V

Prepurge: 5 sec.

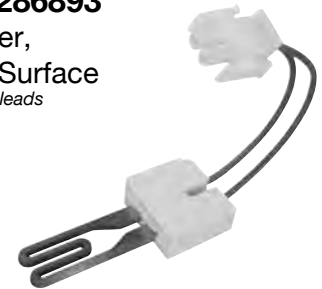
UTEC 1012-925



622286893

Igniter, Hot Surface

5-3/4" leads



Has a (2) male pin connection quick disconnect

622416401

Igniter, Direct Spark



35-1/4" lead wire with a female pin connection

622257801

Module, Ignition

(I.D. #HS780-34PL-308A)



Hot surface

620044

Module, Ignition

(I.D. #156-5613)



Has (2) .250" male terminals

512301241

Motor, Blower

Volts - 115

Amps - 7.30

HP - 1/2

RPM - 1075

Rotation - reversible

4 speed, 5" shaft



All ends have .250" female flag terminals

702415703

Motor, Draft Inducer Blower Assembly

Volts - 120, 60Hz

Amps - 1.71

1/20- HP

RPM - 3400



Used on standing pilot models

422510406

Relay



Has (5) .250" male terminals

CURRENT PRICING CAN BE FOUND ON OUR WEBSITE

All logos, trademarks, part numbers, photos & illustrations are intended solely for identification. Items offered for sale are not represented to be manufactured by the company that built the original equipment.

PHONE: 800-843-0903 • FAX: 800-344-1848 • WEB: www.pdqsupplyinc.com • FB: facebook.com/pdqsupplyinc

622174401
Sensor, Flame
3-1/4" overall length



Has a .250" male terminal

622354301 *Flame sensor only*
622404471 *Flame sensor kit*
Sensor, Remote Flame



Kit contains:
Inshot burner bracket, ribbon burner bracket, threaded U-bolt, (3) sheet metal screws, (2) wing nuts, (2) lock washers, remote sensor, wire splice, remote sensor wire, wire strain relief, (2) orange wires, (4) plastic ties, Sensor Connection label, "Notice" label

472190001
Switch, Limit
open @ 230°F
manual reset



Has (2) .250" male terminals

472238337
Switch, Limit
open @ 340°F
manual reset



Has (2) .250" male terminals

472286001
Switch, Limit
open @ 105°F
close @ 95°F



Has (2) .250" & (2) .187" male terminals

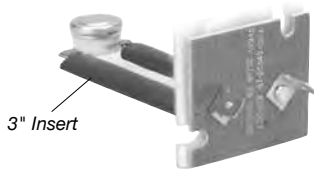
472286101
Switch, Limit
open @ 350°F
manual reset



Has (2) .250" male terminals

472534902
open @ 170°F - close @ 150°F

472534903
open @ 150°F - close @ 130°F
Switch, Limit



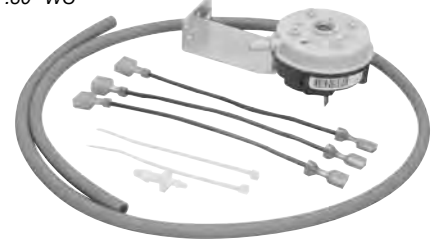
Has (2) .250" male terminals

422419401
Switch, Pressure
(I.D. #IS20035051 L5030)
.35" WC



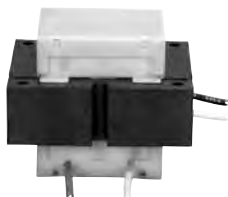
Has (2) .250" male terminals

422419482
Switch, Pressure Kit
(I.D. #IS20030051 L5028)
.30" WC



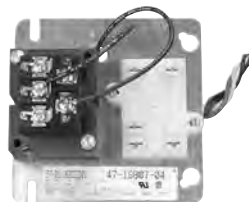
Has (2) .250" male terminals

462286304
Transformer
Primary: 120 Volt
Secondary: 24 Volt
50/60 Hz, 40 VA



All 4 wires have .250" crimped female terminal ends

471980704
Transformer
Primary: 120 Volt
Secondary: 24 Volt
50/60 Hz, 40 VA



Mounting plate measures 4-1/4" x 4-1/4"

602286601
Valve, Gas
(I.D. #VR8205H-8016)
Hot Surface Ignition
24V, 1/2" x 1/2"
Single stage
Slow opening: 150,000
BTU @ 1" W.C.



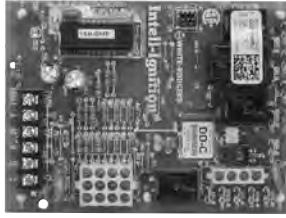
CURRENT PRICING CAN BE FOUND ON OUR WEBSITE

All logos, trademarks, part numbers, photos & illustrations are intended solely for identification. Items offered for sale are not represented to be manufactured by the company that built the original equipment.

PHONE: 800-843-0903 • FAX: 800-344-1848 • WEB: www.pdqsupplyinc.com • FB: facebook.com/pdqsupplyinc

CNT5165

Control, Integrated Fan
(I.D. #50A65-476-08)
4-3/8" x 5-7/8"



FUS0620

Fuse, Thermal
(I.D. #TF167C)



Has (2) .250" male terminals

FUS0810

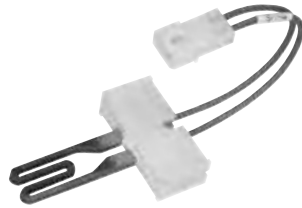
Fuse, Thermal
(I.D. #TF1670)



Has (2) .250" male terminals

IGN0026

Igniter, Hot Surface
5-1/2" leads



Has a (2) male pin connection quick disconnect

IGN0054

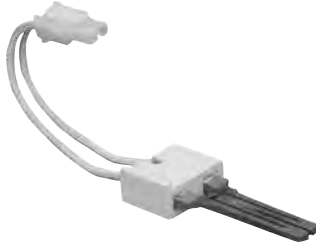
Igniter, Hot Surface
5-3/4" leads



Has a (2) male pin connection quick disconnect

IGN00023

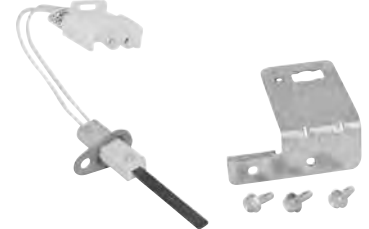
Igniter, Hot Surface
5-1/2" leads



Has a (2) male pin connection quick disconnect

IGN0117

Igniter, Hot Surface
5-1/4" leads



Has a (2) female pin connection quick disconnect

PLT3400

Igniter, Hot Surface
12" leads



Lochinvar ignitor
Has .250" male insulated terminals

CNT1316

Module, Ignition
(I.D. #50E47-60)
(I.D. #50E47-843)
Hot Surface Ignition
Input voltage: 25VAC



6 different program keys w/ corresponding color coded timing labels
Program key determines... trial for ignition, retries, prepurge and warm-up time

CNT3797

Module, Fan Control
(I.D. #50A55-480)
(I.D. #50A55-486)
Retries: 2
Attempts: 3
Ignition trial time: 4 sec.
Prepurge: 0 sec.
Post purge: 5 sec.
Cir. blower on delay: heat 45 sec., cool 2 sec.



CURRENT PRICING CAN BE FOUND ON OUR WEBSITE

All logos, trademarks, part numbers, photos & illustrations are intended solely for identification. Items offered for sale are not represented to be manufactured by the company that built the original equipment.

PHONE: 800-843-0903 • FAX: 800-344-1848 • WEB: www.pdqsupplyinc.com • FB: facebook.com/pdqsupplyinc

BLW0024

Motor, Draft Inducer
Blower Assembly

Volts - 115
Amps - 1.0
Hz - 60
Single Phase



Has (2) .250" female terminals

BLW0473

Motor, Combustion
Blower Assembly

Amps - .95
Volts - 115
H.P. - 1/50
Single Phase



Has a (2) male
pin connection quick disconnect

MOT9053

Motor, Blower

Volts - 115
Amps - 5.80
RPM - 1075
Rotation - CCW
HP - 1/3
Single Phase
Shaft - 3"



(2) brown wires have
.250" female flag terminals, the other
(5) wires have .250" female terminals

SEN1114

Sensor, Flame



Has a .250" male terminal

SEN0233

Sensor, Flame



Has (1) .250"
male terminal

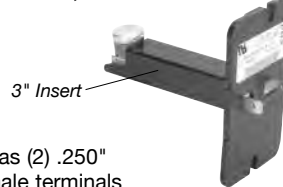
SWT1258

open @ 170°F
close @ 140°F

SWT1273

open @ 220°F
close @ 190°F

Switch, Limit



Has (2) .250"
male terminals

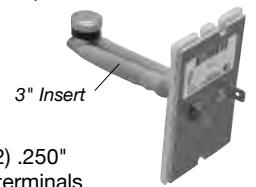
SWT1259

open @ 190°F
close @ 160°F

SWT1272

open @ 250°F
close @ 220°F

Switch, Limit



Has (2) .250"
male terminals

SWT2357

Switch, Pressure (Dual)

(I.D. #C341750P02)

.17" WC
Open @ .45
Close @ .55



Has (4) .250" male terminals

SWT1255

Switch, Pressure

(I.D. #FS6614-1165)

.50" WC
Open @ .55
Close @ .65



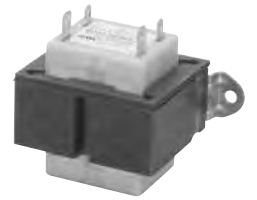
Has (2) .250" male terminals

TRR1729

Transformer

(I.D. #C340041P05)

(I.D. #X1355026703)
Primary: 115 Volt
Secondary: 24 Volt
Capacity: 35 VA



Has (2) .250" & (2) 187" male terminals
Replaces transformer #TRR0783

VAL7732

Valve, Combination Gas

(I.D. #36G24-205)

24V
1/2" x 1/2"
Max pressure: 1/2 PSI
Reg: 3.3" WC



VAL2905

(I.D. #36E01-221)

VAL7731 NEW

(I.D. #36G22-209)

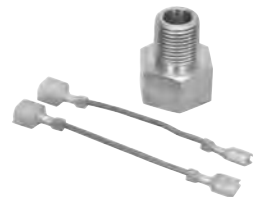
Valve, Dual
Combo Gas

24V
1/2" x 1/2"
Max pressure: 1/2 PSI
Reg: 3.5" WC



KIT9419

Valve, Gas Valve Adapter Kit



Used when replacing WR 36E and 36F
series valves with 36G Gemini

CURRENT PRICING CAN BE FOUND ON OUR WEBSITE

All logos, trademarks, part numbers, photos & illustrations are intended solely for identification. Items offered for sale are not represented to be manufactured by the company that built the original equipment.

PHONE: 800-843-0903 • FAX: 800-344-1848 • WEB: www.pdqsupplyinc.com • FB: facebook.com/pdqsupplyinc

P200600
Blade, Fan
Metal



Has 5 blades

P322398
Generator, Pilot



35" lead with non-insulated spade terminals

P285500
Igniter, Manual Spark



P062101
(I.D. #A0510B2106)
1.4 AMP

P321601
(I.D. #A0512B2242)
1.9 AMP

Motor, Fan
120V, 60Hz



Has (3) stripped wire ends

P179900
Pilot, Burner

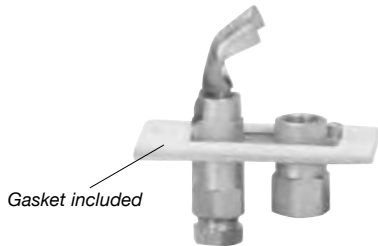


P501617
Pilot, Burner



35" lead with non-insulated spade terminals

P179500
Pilot, Burner



P229100
Pilot, Burner



Has a 16" lead with a .250" female terminal

P323418
Pilot, Burner



Has a 16" lead with a .250" female terminal

P271100
Sensor, Flame

SOLD SEPARATELY



Sensor has a .250" male terminal

P274200
Wire, Lead



17" lead with (2) .250" female terminals

CURRENT PRICING CAN BE FOUND ON OUR WEBSITE

All logos, trademarks, part numbers, photos & illustrations are intended solely for identification. Items offered for sale are not represented to be manufactured by the company that built the original equipment.

PHONE: 800-843-0903 • FAX: 800-344-1848 • WEB: www.pdqsupplyinc.com • FB: facebook.com/pdqsupplyinc

P200200

Switch, Fan

open @ 120°F - close @ 105°F



Has (2) .250" male terminals

P321127

Switch, Limit

open @ 330°F
close @ 270°F



Has (2) .250" male terminals

P206500

Switch, Limit

open @ 240°F
close @ 200°F



Has (2) .250" male terminals

P296201

open @ 165°F - close @ 130°F

P213400

open @ 160°F - close @ 130°F

Switch, Limit



Has (3) .250" male terminals

P322391

Thermocouple



Junction block type

Has (2) .250" male terminals

P024200

Transformer

Primary: 120 Volt
Secondary: 24 Volt
Capacity: 20 VA



710205

Valve, Combination Gas

SNAP-ACTION HYDRAULIC (70,000 BTU)
Factory Model #7000 SRLC
1/2" x 1/2"



The 710 low capacity gas heating valves are designed for recreational vehicles and other low capacity heating applications. All models include a manual valve (gas cock), automatic pilot safety valve, pilot outlet, pilot gas filter and pilot adjusting key

P323209

Valve, Dual Combination Gas

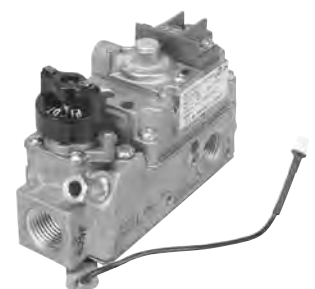
24 V
(I.D. #VR8200C2221)
1/2" x 1/2"



P323011

Valve, Wall Furnace Gas

Millivolt
1/2" x 3/8"



CURRENT PRICING CAN BE FOUND ON OUR WEBSITE

All logos, trademarks, part numbers, photos & illustrations are intended solely for identification. Items offered for sale are not represented to be manufactured by the company that built the original equipment.

PHONE: 800-843-0903 • FAX: 800-344-1848 • WEB: www.pdqsupplyinc.com • FB: facebook.com/pdqsupplyinc

OEM HEATING PARTS

33103010000

Board, Control Kit
Single stage



Replaces:
33102956000, 03109167000, 03101933000,
03101267000, 03101267001, 03100662000,
0310125000, 03101266000, 03101284000,
03101973000, 03101972000, 33109167000

NEW

02532625000

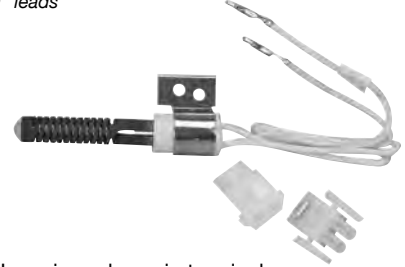
Igniter, Hot Surface
5-3/4" leads



Has a (2) male pin connection quick disconnect

02532626000

Igniter, Hot Surface Kit
9" leads



Has crimped-on pin terminals
Includes (2) quick disconnects

YORK MODEL TO YORK IGNITOR NUMBER CROSS REFERENCE

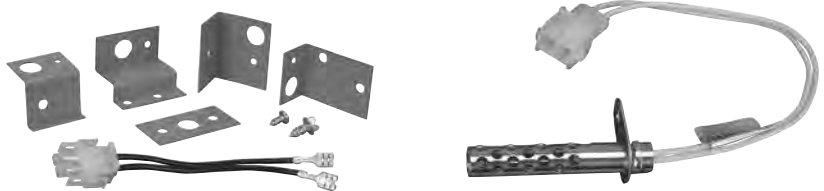
UNIT MODEL	IGNITION TYPE	REPLACEMENT
G8C****OD	HOT SURFACE	025-32625-000
P1CC	HOT SURFACE	473-20937-001
P1CD	HOT SURFACE	473-20937-001
.P1CK	HOT SURFACE	025-32625-000 & BURNER SHIELD KIT
P1CX	HOT SURFACE	025-32625-000
P1DU	HOT SURFACE	025-32625-000
P1NU	ALL UNITS ON RECALL	-
P1UC	HOT SURFACE	473-20937-001
P1UD	HOT SURFACE	473-20937-001
P1UK	HOT SURFACE	025-32625-000 & BURNER SHIELD KIT
P1XU	HOT SURFACE	025-32625-000
P2CD	HOT SURFACE	473-20937-001
P2CH	HOT SURFACE	025-32625-000
P2DP	HOT SURFACE	025-32625-000 & BURNER SHIELD KIT
P2DR	HOT SURFACE	025-32625-000
P2MP	HOT SURFACE	025-32625-000 & BURNER SHIELD KIT
P2UC	HOT SURFACE	473-20937-001
P2UD	HOT SURFACE	473-20937-001
P2UH	HOT SURFACE	025-32625-000
P2UR	HOT SURFACE	473-20937-001
P3CC	HOT SURFACE	473-20937-001
P3DH	HOT SURFACE	025-32625-000
P3DN	HOT SURFACE	025-32625-000
P3GE	HOT SURFACE	025-32625-000
P3HU	HOT SURFACE	025-32625-000
P3UC	HOT SURFACE	473-20937-001
P3UR	HOT SURFACE	025-32625-000
P6UC	HOT SURFACE	473-20937-001
P9CC	HOT SURFACE	473-20937-001
P9CK	HOT SURFACE	025-32625-000 & BURNER SHIELD KIT
P9MP	HOT SURFACE	025-32625-000 & BURNER SHIELD KIT
P9UC	HOT SURFACE	473-20937-001
P9UD	HOT SURFACE	473-20937-001
P-WH (230V)	HOT SURFACE	024-26098-000

BURNER SHIELD PART

2 Cell - 373-12221-802	5 Cell - 373-12221-805
3 Cell - 373-12221-803	6 Cell - 373-12221-806
4 Cell - 373-12221-804	7 Cell - 373-12221-807

47320937001

Igniter, Hot Surface Kit



7-3/4" leads with a (2) male pin connection quick disconnect.
Kit includes: brackets, additional disconnect, screws and wire nuts (not shown)

03101266000

Module, Fan Control

(I.D. #50A50-241)
Ignition trial time: 7 sec.; IAP: 4 sec.
Prepurge: 0 sec. Postpurge: 15 sec.
Retries: 2; Attempts: 3; Recycles: 4
Ignitor warmup: 17 sec. on retry: 27 sec.



02525436700

Module,
Ignition Kit

Hot Surface Ignition
(I.D. #50E47-70)
(I.D. #50E47-843)



- Input voltage: 25VAC
- 6 different program keys w/ corresponding color coded timing labels
- Program key determines... trial for ignition, retries, prepurge and warm-up time

37310337702

Motor, Draft Inducer

Volts - 115
AMP - 1.2
RPM - 3000
H.P. - 1/50



Has quick disconnect on wire ends with male pin connections

32425007000

Motor, Draft Inducer

Volts - 115
AMP - 0.7
RPM - 3450
H.P. - 1/25



Has (1) male pin connection and (1) stripped wire end and gasket kit

CURRENT PRICING CAN BE FOUND ON OUR WEBSITE

All logos, trademarks, part numbers, photos & illustrations are intended solely for identification. Items offered for sale are not represented to be manufactured by the company that built the original equipment.

PHONE: 800-843-0903 • FAX: 800-344-1848 • WEB: www.pdqsupplyinc.com • FB: facebook.com/pdqsupplyinc

32632067000

Motor, Vent Fan

Assembly
CW Rotation
(viewing motor side)
 Volts - 115, 60Hz
 RPM - 3000
 Amps- 1.10
 Sealed ball bearing



Has (1) male pin connection
 and (1) stripped wire end

02527773700

Sensor, Flame

Porcelain: 1"
Rod: 2-1/2"

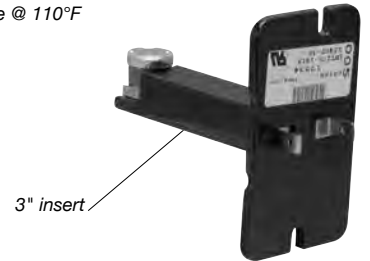


Has a .250" male terminal

02529041005

Switch, Limit

Open @ 140°F
Close @ 110°F



Has (2) .250" male terminals

02425256700

Switch, Pressure

(I.D. #FS6436-703)
(I.D. #9370VD-HS-0013)
 .50" WC



Has (2) .250" male terminals
 & (1) .187" male terminal

02435271000

Switch, Pressure

.50" WC



Has (2) .250" male terminals

02427576000

Switch, Pressure

(I.D. #MPL-9300)
 1/10 HP



Has (2) .250" male terminals

02527792009

Switch, Roll-Out

open @ 350°F
manual reset



Has (2) .250" male terminals

02527747016

Switch, Roll-Out Flame

open @ 320°F
manual reset



Has (2) .250" male terminals

02634027000

Switch, Roll-Out Flame

open @ 300°F
manual reset

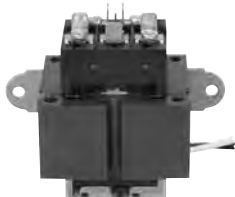


Has (2) .250" male terminals

02521911701

Transformer

Primary: 120 Volt
Secondary: 24 Volt
Capacity: 40 VA
 50/60 Hz



Has (5) .250" male terminals

02530889000

Transformer

(I.D. #4000Y01E07AE15)
Primary: 120 Volt
Secondary: 24 Volt
Capacity: 40 VA
 50/60 Hz



Has (2) .250" & (2) .187" male terminals

02525423700

Valve, Combination Gas

(I.D. #VR8200A-2223)
 24V, 1/2" x 1/2"
 3.5" WC



CURRENT PRICING CAN BE FOUND ON OUR WEBSITE

All logos, trademarks, part numbers, photos & illustrations are intended solely for identification. Items offered for sale are not represented to be manufactured by the company that built the original equipment.

PHONE: 800-843-0903 • FAX: 800-344-1848 • WEB: www.pdqsupplyinc.com • FB: facebook.com/pdqsupplyinc