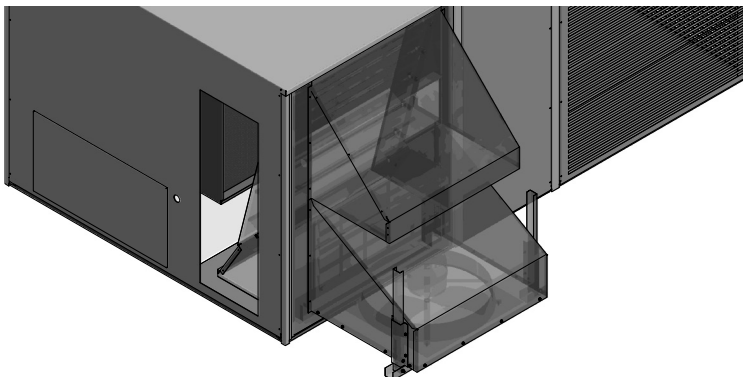


SEQUENCE OF OPERATION

This sequence assumes employment of a single enthalpy economizer using a two stage thermostat.

1. A call for cooling comes from room thermostat.
2. The enthalpy sensor determines if the atmospheric conditions are conducive for using outside air for cooling. If YES, the fresh air damper section of the economizer begins to open.
3. The EXH SET potentiometer should be set such that when the fresh air dampers are open approximately 70% of their full open capacity, EXH1 is energized and the power exhaust is powered to draw the relief air from the space. There is a 60 +/-30 second time delay built into the economizer control before the fan motor actually energizes.
4. When the dampers modulate below the 70% open position due to a satisfied thermostat or atmospheric conditions, the power exhaust disengages immediately.



INSTALLATION WITH ECONOMIZER

1. Open carton and inspect contents for shortages and damage.
2. Disconnect the power to the unit.
3. If the economizer is already fully installed, remove the economizer hoods. If a new installation, do not install the economizer hoods after installing the replacement panel that comes with the economizer.
4. Remove the horizontal duct cover panel.
5. Slide the support legs through the guides. (Figure 1)
6. Feed the line voltage and low voltage wires through the knockouts provided in the damper section of the economizer. (Figure 2)
7. Attach the power exhaust hood over the barometric relief opening. Extend the support legs and secure them using the screws provided.
8. Feed the line voltage leads to the control section of the package unit and attach them to T1 and T2 on the unit contactor per the included wiring diagram.
9. Attach the low voltage control leads to the Jade economizer controller per the included wiring diagram using the side connectors provided. (Figure 3)
10. On the Jade control, set the position at which the exhaust will energize under the SETPOINTS menu.
11. Reinstall the horizontal duct cover panel and the filter access panel.

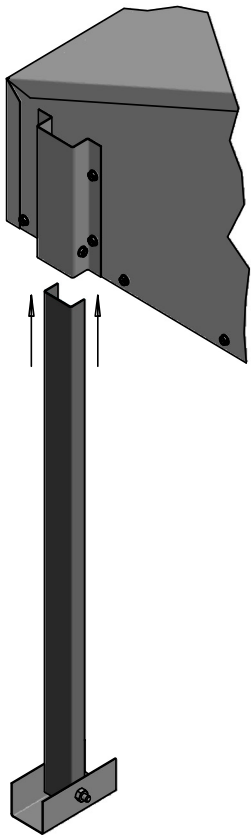


Figure 1



Figure 2

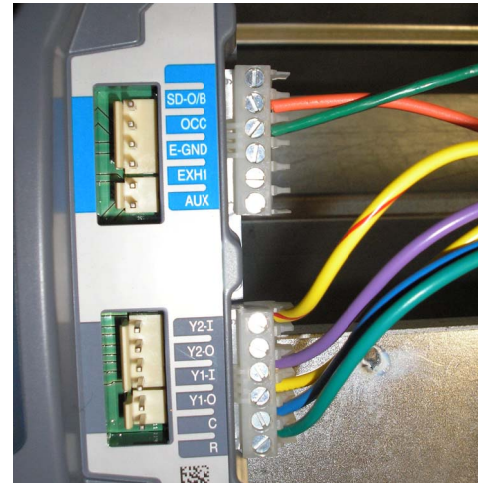


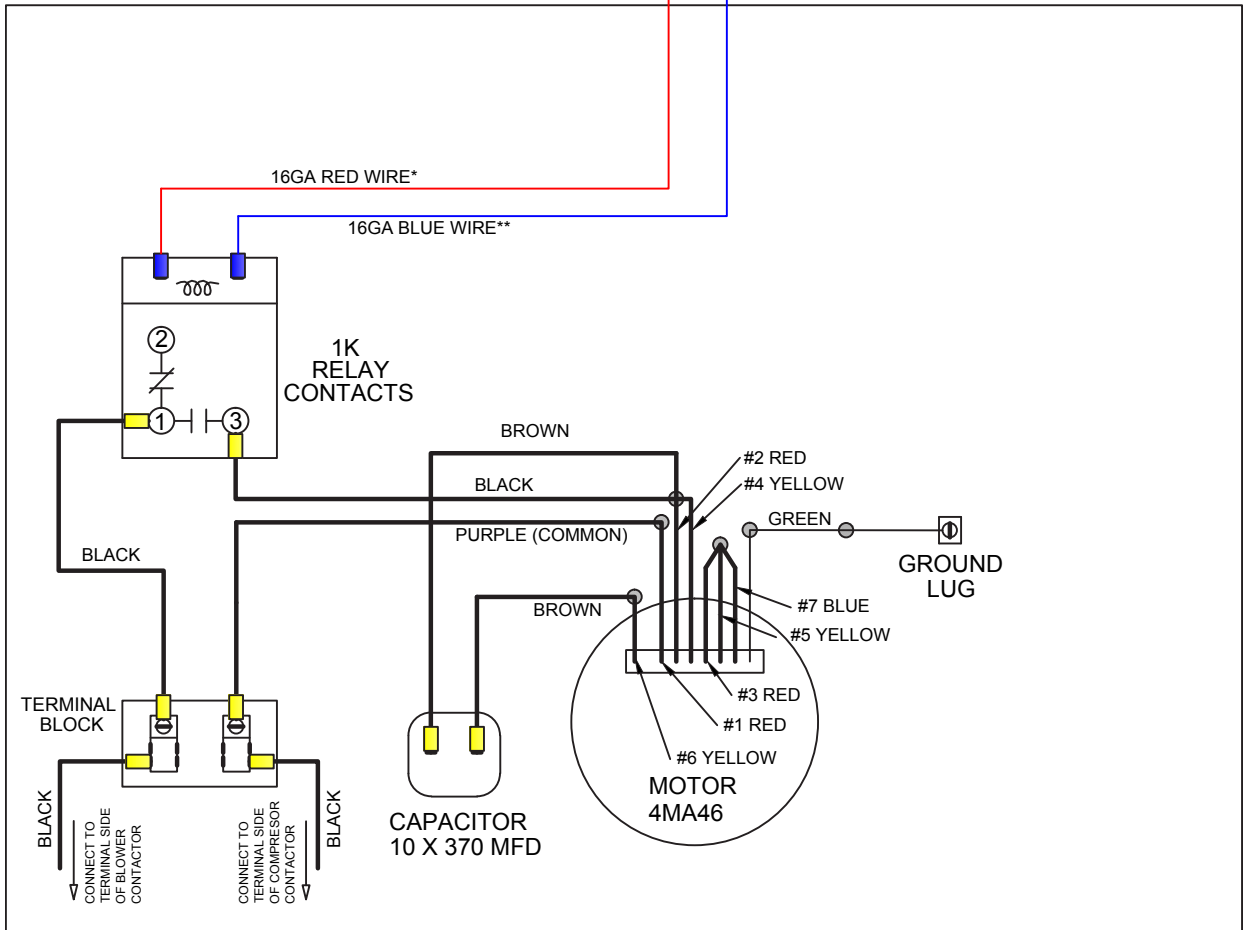
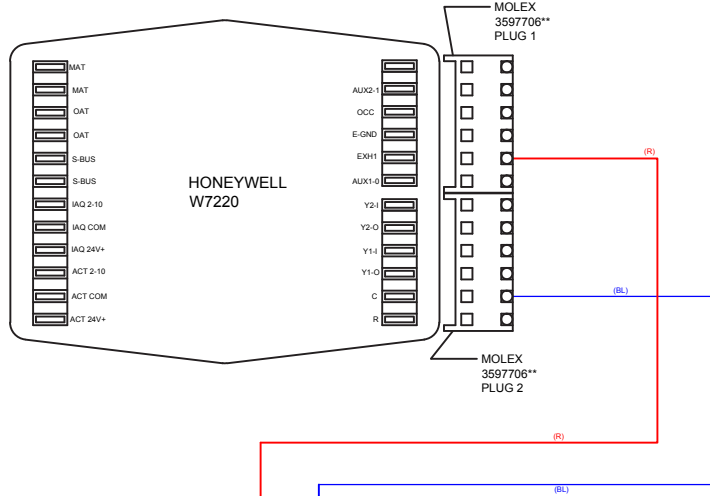
Figure 3

CONTENTS

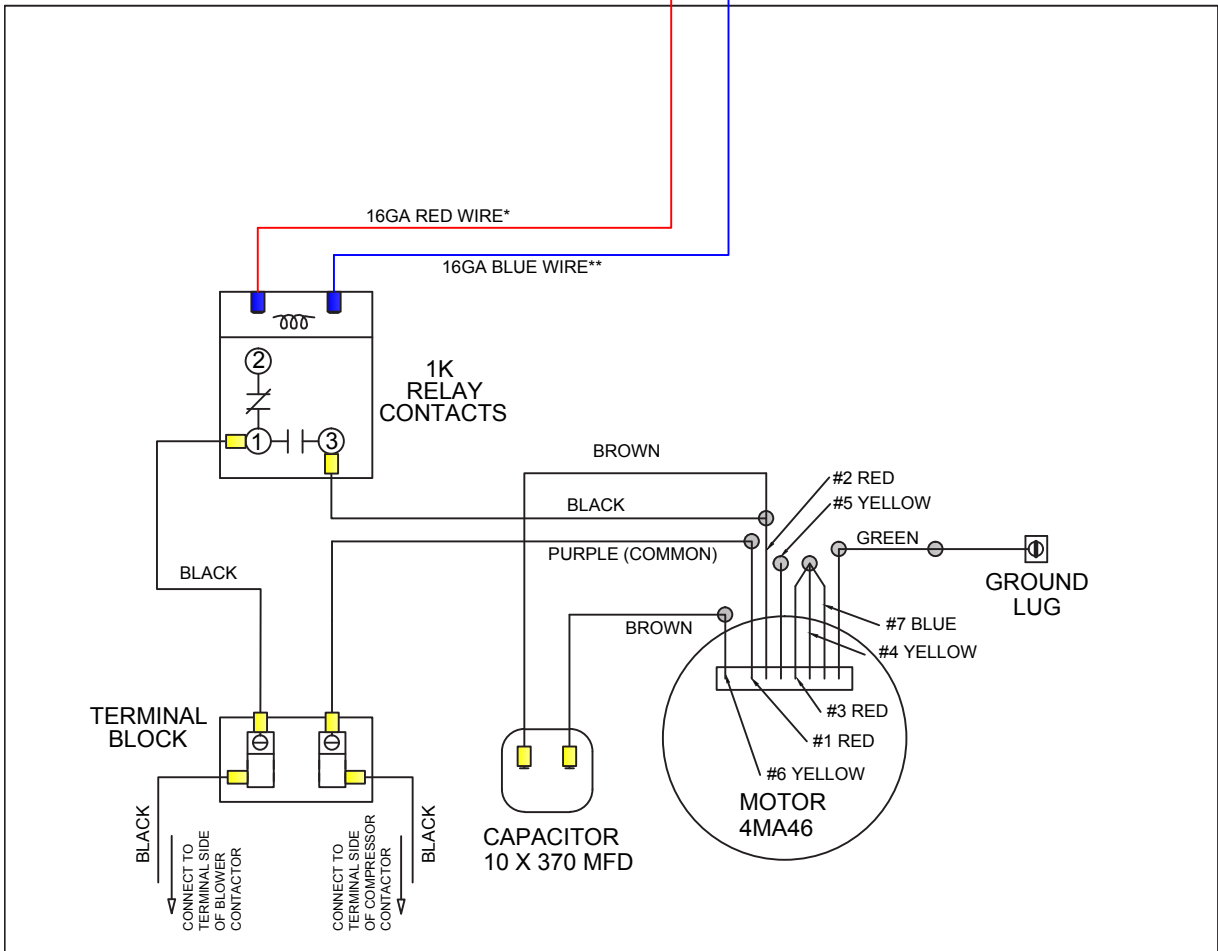
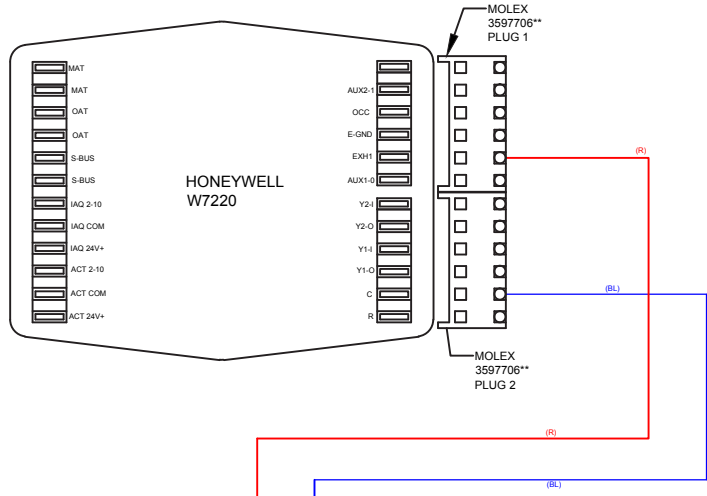
1	Power Exhaust Hood
2	Support Legs
2	Side Connectors
1	Installation Instructions

Model	Voltage	Motor				
		HP	RPM	Type	FLA	Speeds
PE901502	208/230-1-60	1/2	1075	Direct Drive	2.4	1
PE901504	460-1-60	1/2	1075	Direct Drive	1.2	1
PE901507	575-1-60	1/2	1100	Direct Drive	1.0	1

DPE901502 WIRE DIAGRAM



DPE901504 WIRE DIAGRAM



DPE901507 WIRE DIAGRAM

