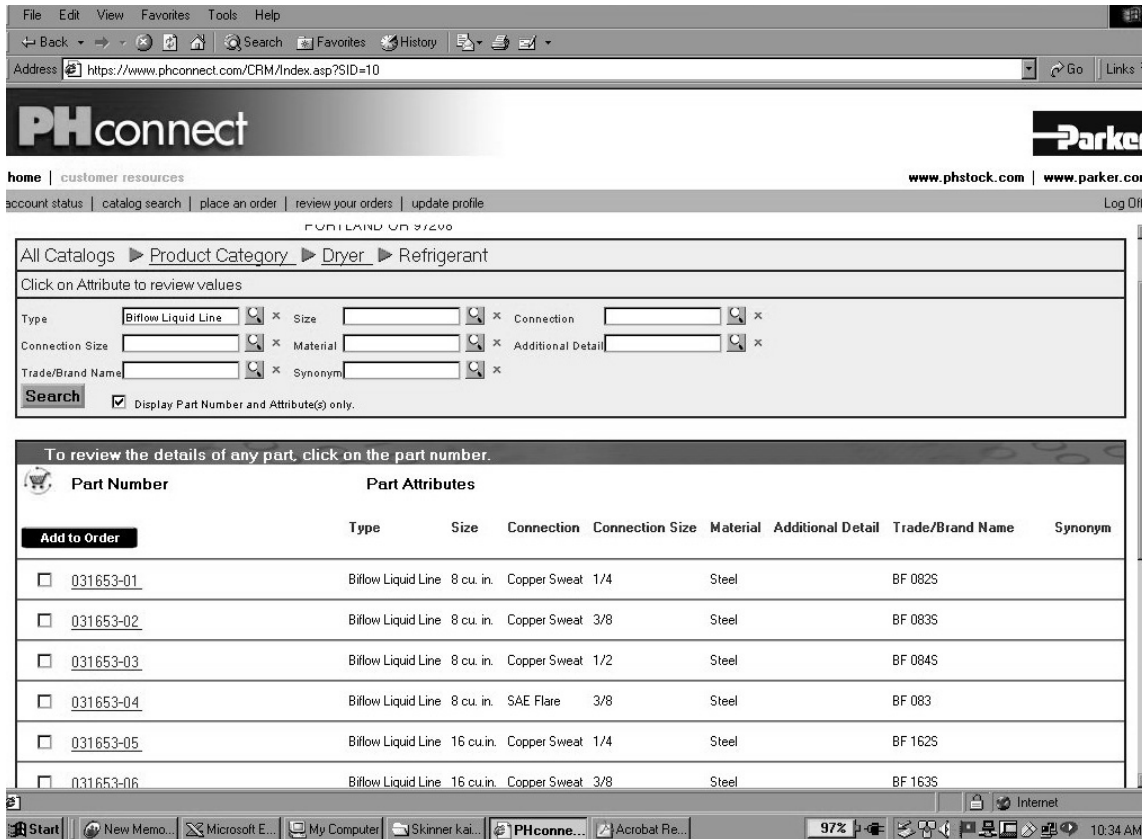


**What is PHconnect ?**

PHconnect is Parker’s on-line resource for its U.S.A. refrigeration and air conditioning wholesalers. PHconnect enables wholesalers to do the following via the internet:

- enter orders
- check product inventory and availability
- search product catalogs
- check order status
- track package shipment and delivery
- check account status with Parker
- view invoice for month end billing



**What products are available to me through PHconnect?**

All Parker products currently outlined in the wholesaler trade price schedule. The offering includes solenoid valves, thermostatic expansion valves, filter driers and other system protectors.

**Do I need any special equipment for PHconnect?**

All you need is an internet connection and an account with Parker Hannifin.

**How much does PHconnect cost?**

PHconnect is a FREE service to Parker refrigeration and air conditioning wholesalers.

**How do I get started with PHconnect?**

It's easy. Simply fill out the application and fax to (800) 241-2872.

**Parker PHconnect Application**

YES! I want to apply for Parker's PHconnect service. By signing and completing this document, I agree to the standard terms and conditions of use listed on the back of this form.

Company Name: \_\_\_\_\_

Company Address: \_\_\_\_\_

City/State/Zip: \_\_\_\_\_

Phone Number: \_\_\_\_\_

YOUR COMPANY'S BILL-TO AND SHIP-TO LOCATIONS (PARKER SIX DIGIT CUSTOMER CODES) FOR WHICH YOU ARE REQUESTING PHCONNECT:

**USER ADMINISTRATOR:**

(should be main user at this location; can also grant access to PHconnect features to other users at this location)

Name/Title: \_\_\_\_\_ e-mail address: \_\_\_\_\_

Requested USER ID (i.e. Bobby123, LisaXYZ, etc.): \_\_\_\_\_

**ADDITIONAL USERS:**

1) Name/Title: \_\_\_\_\_ e-mail address: \_\_\_\_\_

Requested USER ID (i.e. Bobby123, LisaXYZ, etc.): \_\_\_\_\_

2) Name/Title: \_\_\_\_\_ e-mail address: \_\_\_\_\_

Requested USER ID (i.e. Bobby123, LisaXYZ, etc.): \_\_\_\_\_

**PERSON COMPLETING THIS FORM**

Your Name: (PLEASE PRINT): \_\_\_\_\_

Title: \_\_\_\_\_

Signature: \_\_\_\_\_

PLEASE RETURN TO:  
Clair Young  
Parker Hannifin Corporation  
2445 South 25th Avenue  
Broadview, IL 60155  
OR  
Fax: (800) 241-2872



<b>Product Category</b>	<b>Description</b>	<b>Page</b>	
System Protectors	Sahara Series Filter-Driers	5	
	ParFlush System	5	
	Liquid Line Filter-Driers	6	
	Suction Line Filter-Driers	7	
	Bi-Flow Filter-Driers	8	
	Refrigerant Recovery Products	9	
	Mufflers	9	
	Steel Receivers	9	
	Automotive Process Couplings	10	
	Sight Glass Moisture Indicators	11	
	Replaceable Core Filter Drier Shells	12	
	Shell Internal Component Kits	12	
	Replaceable Filter Drier Cores	13	
	945TH Flaring Tool	14	
	QL Series Shut off Valves	14	
	Suction Line Accumulators	15	
	Copper Products	Copper Spring Loaded Check Valves	15
		Service Driers	16
		Solid Core CuSLD	16
		Solid Core CuLLD	17
Strainers		17	
Quick Connect Couplings		5500 Series Resealable Refrigeration Couplings	17
		Refrigeration and Air Conditioning Ball Valves	19
Ball Valves			19
Thermostatic Expansion Valves		N & NE Series	20
		HAE & HCAE Series	21
	TXV KITS	22	
	C & CE Series	23	
	SC & SCE Series	25	
	EC & ECE Series	26	
	TEV Valve Bodies	28	
	KT-46 Power Elements	29	
	EBS Series	30	
	OE Series	31	
	KT-83 and KT-33 Series Power Elements	33	
	Auxilliary Side Connectors	33	
	A Series	34	
Constant Pressure Expansion			
Refrigeration Solenoid Valves	New R Series Normally Closed	35	
	New R Series Repair Kits and Coils	36	
	New R Series Normally Open Valves	37	
	R10 - R55 Series Valves and Coils	38	
	RB Series Refrigeration Valve Repair Kits and Coils	41	
	Secondary Coolant Glycol Valves	44	
	Glycol Valve Repair Kits	44	
General Purpose Solenoid Valves	GP Series General Purpose Valves	42	
	GP Valve Repair Kits	42	
	Gold Ring Series	45	
Pressure Regulators	ORIT and SORIT Evaporator Pressure Regulators	48	
	LAC Head Pressure Controls	49	
	ADR and HGBE Discharge By-Pass Valves	50	
	OROA Head Pressure Controls	50	
	CRO and CROT Crankcase Pressure Regulators	51	
	Heat Reclaim Valves/Oil Filters/Oil Level Controls	52	
Oils	Polyol Ester/Mineral/Alkybenzene/Vacuum Pump	53	
	Acid Test Kits/Oil Pump/Premium Coil Cleaners	54	
Chemicals	Sprayers/Drain Pan/Insulation/Heat Transfer/Heat Block	55	
	Water Treatments, Aerosol Products	56	
Vibration Absorbers			
	Vibration Absorbers	57	



**Sahara Series™ Liquid Line Filter-Drier**

**Key Features and Benefits:**

- Excellent moisture and filtration capacity
- Compatible with all existing and new refrigerants and blends including R410A
- Solid copper sweat fittings
- Powder paint exterior coating surpasses 500 hour ASTM salt spray test and resists corrosion
- Eliminates concern of additive stripping
- U.L. and ULc Listed Guide SMGT-File No. SA-1756A & B
- Rated for 650 PSI working pressure



Model	Part No.	Connections	Ctn Qty	Ctn. Wt	Cutout In.	Shell Dia.	Trade Price
SS-053S	450103-001	3/8" ODF	25	28.2	3.52"	2.45"	\$17.00
SS-083S	450106-001	3/8" ODF	25	33.3	4.42"	2.69"	\$18.00
SS-163S	450112-001	3/8" ODF	25	37.1	5.08"	3.03"	\$23.00

**Sahara Series™ Suction Line Filter Driers**

**Key Features and Benefits:**

- Designed for system clean-up
- Low pressure drop
- High acid capacity
- Solid copper sweat connections
- Access fitting for easy pressure drop measurement
- Black powder coat paint surpasses 500-hour salt spray test
- U.L. and ULc Listed Guide SMGT-File No. SA-1756A & B
- Compatible with R410A



Model	Part No.	Connections	Ctn Qty	Ctn. Wt	Cutout In.	Shell Dia.	Trade Price
SLD165-V	450049-001	5/8" ODF	25	37.7	5.08"	3.03"	\$35.85
SLD166-V	450036-001	3/4" ODF	25	38.5	5.39"	3.03"	\$38.45
SLD167-V	450050-001	7/8" ODF	25	39.3	5.42"	3.03"	\$39.78
SLD305-V	450051-001	5/8" ODF	10	29.3	7.98"	3.03"	\$46.32
SLD306-V	450059-001	3/4" ODF	10	29.3	8.29"	3.03"	\$46.58
SLD307-V	450038-001	7/8" ODF	10	29.9	8.32"	3.03"	\$44.13

**Parker Flush System**

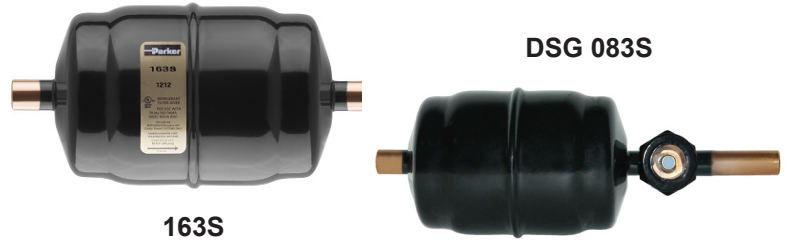
Model	Part No.	Description	Ctn Qty	Trade Price
PFD-163S	451003	Par-Flush Patented Filter-Drier	25	\$56.10
PAR-FLUSH KIT	475460	2LB canister of Par-Flush, patented filter-drier, PFV-1 canister valve, and PFG-2 gun w/3' hose assembly	4	\$200.40
PF-2	475099	Par-Flush Solvent 2LB canister	6	\$152.71
PFKIT-1LB	475463	Par-Flush Kit with 1LB canister and patented filter-drier	6	\$130.69
PF-1	475464	Par-Flush Solvent 1LB canister	12	\$83.01
PFV-1	475461	Par-Flush Canister Valve	6	\$17.63
PFG-1	475462	Par-Flush Gun / 3' Hose Assembly	6	\$54.35



**Liquid Line Filter-Driers - Gold Label**

**Key Features and Benefits:**

- High moisture, acid and filtration capacity
- Exceptional compatibility with polyolester oils
- Compatible with CFC, HCFC, HFC, and HFC blends
- Solid copper sweat or nickel plated SAE flare fittings
- Powder paint surpasses 500 hour ASTM salt spray test
- Eliminates concern of additive stripping
- 650 psig design pressure
- 083S and 163S with built-in sightglass available
- U.L. and ULc Listed Guide SMGT-File No. SA-1756A & B



Model	Part No.	Connections	Ctn Qty	Ctn. Wt	Trade Price
LLD 032	450003-001	1/4" SAE Male	25	19.4	\$14.10
LLD 032S	450004-001	1/4" ODF	25	18.2	\$14.10
LLD 032MF	450005-001	1/4" SAE Male x Female	25	19.4	\$17.59
LLD 052	450119-001	1/4" SAE Male	25	29.1	\$17.72
LLD 052S	450142-001	1/4" ODF	25	27.3	\$17.72
LLD 053	450145-001	3/8" SAE Male	25	30.3	\$18.99
LLD 053S	450127-001	3/8" ODF	25	28.2	\$17.87
LLD 082	450120-001	1/4" SAE Male	25	33.1	\$23.07
LLD 082S	450141-001	1/4" ODF	25	32.3	\$23.80
LLD 083	450121-001	3/8" SAE Male	25	33.6	\$23.07
LLD 083S	450129-001	3/8" ODF	25	33.3	\$22.36
DSG 083S	409994	3/8" ODF with SightGlass	25	50.0	\$57.77
LLD 084	450122-001	1/2" SAE Male	25	36.5	\$24.43
LLD 084S	450130-001	1/2" ODF	25	32.7	\$24.43
LLD 163	450124-001	3/8" SAE Male	25	39.8	\$29.59
LLD 163S	450131-001	3/8" ODF	25	37.1	\$28.68
DSG 163S	409995	3/8" ODF with SightGlass	10	23.0	\$65.85
LLD 164	450125-001	1/2" SAE Male	25	41.8	\$32.30
LLD 164S	450132-001	1/2" ODF	25	37.3	\$31.90
LLD 165	450126-001	5/8" SAE Male	25	42.8	\$33.42
LLD 165S	450133-001	5/8" ODF	25	37.7	\$32.86
LLD 303	450030-001	3/8" SAE Male	10	29.4	\$55.78
LLD 303S	450031-001	3/8" ODF	10	28.7	\$52.70
LLD 304	450032-001	1/2" SAE Male	10	30.5	\$55.78
LLD 304S	450046-001	1/2" ODF	10	29.1	\$52.90
LLD 305	450033-002	5/8" SAE Male	10	31.4	\$52.90
LLD 305S	450043-001	5/8" ODF	10	29.3	\$49.86
LLD 307S	450055-001	7/8" ODF	10	29.9	\$57.80

## Liquid Line Filter-Driers - Gold Label Cont. from page 6

Model	Part No.	Connections	Ctn Qty	Ctn. Wt	Trade Price
LLD 415	450057-001	5/8" SAE Male	10	15.4	\$74.98
LLD 415S	450047-001	5/8" ODF	10	14.5	\$74.98
LLD 417S	450058-001	7/8" ODF	10	14.8	\$74.98
LLD 756S	450035-003	3/4" ODF	4	22.8	\$134.96
LLD 757S	450061-001	7/8" ODF	4	21.5	\$137.13
LLD 759S	450075-001	1-1/8" ODF	4	22.3	\$140.49

## Suction Line Filter-Driers - Gold Label

**Key Features and Benefits:**

- Solid core high acid capacity suction line filter drier
- Low pressure drop -- exceptionally high flow rates
- Designed for system clean-up
- 500 hours salt spray protection
- Shortest system cut-out lengths allow installation in tight areas
- Includes access valves to simplify pressure drop measurement
- Solid copper sweat fittings
- U.L. and ULc Listed Guide SMGT-File No. SA-1756A & B
- Compatible with R410A



Model	Part No.	Connections	Ctn. Qty.	Access Ports	Ctn. Wt.	Trade Price
SLD 8-3SV HH	450044-001	3/8" ODF	25	1	24.6	\$54.84
SLD 8-4SV HH	450039-001	1/2" ODF	25	1	24.2	\$46.78
SLD 8-5SV HH	450020-001	5/8" ODF	25	1	25.1	\$42.81
SLD 8-6SV HH	450027-001	3/4" ODF	25	1	25.0	\$42.81
SLD 13-5SV HH	450040-001	5/8" ODF	12	2	27.1	\$55.11
SLD 13-6SV HH	450023-001	3/4" ODF	12	2	27.0	\$54.01
SLD 13-7SV HH	450022-001	7/8" ODF	12	2	27.3	\$54.55
SLD 13-9SV HH	450053-001	1-1/8" ODF	12	2	27.3	\$72.46
SLD 27-7SVHH	450042-001	7/8" ODF	10	1	38.5	\$86.90
SLD 27-9SVHH	450041-001	1-1/8" ODF	10	1	39.6	\$87.28
SLD 54-11SV HH	450026-001	1-3/8" ODF	6	2	59.4	\$144.15
SLD 54-13SV HH	450074-001	1-5/8" ODF	6	2	63.0	\$164.10



**R410A Liquid Line Filter-Driers (Pink Label)**

**Key Features and Benefits:**

- 100 percent molecular sieve XH11 desiccant for superior moisture adsorption
- Ensures no degradation of the R-32 component within R410A
- OEM preferred and approved for use with R410A
- Can also be used with all HFC, HCFC and CFC refrigerants
- U.L. and ULc Listed Guide SMGT-File No. SA-1756A & B Rated for 650 PSI



Model	Part No.	Connections	Ctn Qty	Ctn. Wt	Trade Price
163S-XF	450144-001	3/8" ODF	25	37.1	\$28.75

**Bi-Flow Liquid Line Filter-Driers**

**Key Features and Benefits:**

- 100 percent copper sweat or nickel plated flare fittings
- Desiccant core provides removal of solid contaminants, acid and moisture
- Core is cushioned in fiber gaskets for protection and trouble-free performance
- Powder paint coating surpasses 500 hour ASTM salt spray test and resists corrosion
- U.L. and ULc Listed Guide SMGT-File No. SA-1756A & B
- All bi-flow driers are rated 650 PSI for use with R410A



Model	Part No.	Connections	Ctn. Qty.	Ctn. Wt.	Trade Price
BF082S	450037-002	1/4" ODF	25	36.3	\$38.82
BF083	450086-001	3/8" SAE Male	25	39.4	\$38.82
BF083S	450024-001	3/8" ODF	25	37.1	\$35.42
BF084	450087-001	1/2" SAE Male	25	42.1	\$38.82
BF084S	450045-001	1/2" ODF	25	37.8	\$38.82
BF163	450054-001	3/8" SAE Male	25	44.2	\$51.34
BF163S	450025-001	3/8" ODF	25	42.5	\$52.44
BF163S-XF	450021-002	3/8" ODF	25	42.5	\$53.88
<b>BF083S (Copper)</b>	<b>032284-083</b>	3/8" ODF	25	42.5	\$41.86
BF164	450088-001	1/2" SAE Male	25	46.7	\$53.20
BF164S	450028-001	1/2" ODF	25	42.9	\$53.20
BF165S	450029-001	5/8" ODF	25	42.8	\$55.28

## Refrigerant Recovery Products

**Key Features and Benefits:**

- Female outlet fitting models allow direct mounting to the machine
- Extended female end fitting provides valve handle clearance
- Male-to-male fittings allow connection to or between hoses
- Enlarged depth filtering area
- UL listed File 1756

Model	Part No.	Connections	Ctn. Qty.	Ctn. Wt.	Trade Price
PF052	450098-001	1/4" SAE Male	25	26.0	\$20.23
PF052MF	450099-001	1/4" SAE Male X Female	25	26.0	\$25.67
PF052FM	450198	1/4" NPT Female x Male SAE	25	26.0	\$39.62
PF0532	450199	3/8" SAE Male X 1/4"MPT	25	26.0	\$23.95
SPD162	450190	1/4" SAE Male	25	37.3	\$37.62
SPD162MF	450189-001	1/4" SAE Male X Female	25	37.3	\$37.96
SPD163	450195	3/8" SAE Male	25	39.8	\$39.61
302V	450202	1/4" SAE Male with schrader valves	10	36.4	\$51.44
304V	450209	1/4" SAE Male with schrader valves	10	36.4	\$51.44

## Mufflers

**Key Features and Benefits:**

- R410A/R22 rated
- Bi-directional
- UL listed

Model	Part No.	Connection	Case Qty.	Trade Price
PR25083-3-4C	450192	1/2" ODF	24	\$27.13

## Steel Receivers

Model	Part No.	Inlet	Outlet	Height	Diameter	Holding Cap	Trade Price
RT3510V2S-KS	470123	1/4" ODF	1/4" ODF Rotolock Valve	11"	3.5"	2.8 LBS.	\$114.16
RT510V3S-KS	470124	3/8" ODF	3/8" ODF Rotolock Valve	11"	5"	6 LBS.	\$122.80
RT612V3S-KS	470125	3/8" ODF	3/8" ODF Rotolock Valve	13"	6"	11.4 LBS.	\$146.98
RT616V3S-KS	470126	3/8" ODF	3/8" ODF Rotolock Valve	17"	6"	14 LBS	\$149.92
RT618V4S-KS	470127	1/2" ODF	1/2" ODF Rotolock Valve	19"	6"	16 LBS	\$160.83
RT623V4S-KS	470128	1/2" ODF	1/2" ODF Rotolock Valve	24"	6"	20.2 LBS	\$197.93



**Automotive Process Couplings**

Parker's RC01C Automotive Process Coupling provides easy evacuating and charging of HFC-134a mobile air conditioning systems.

**Application:**

- Evacuating and charging of HFC-134a air conditioning systems



Base Product Part No.	Description
RC01C-002	Lowside field service coupling
RC01C-003	Highside field service coupling
RC01C-011	Lowside field service coupling
RC01C-012	Highside field service coupling

**Features and Benefits:**

- Safety feature prevents coupling from flowing unless connected to service port.
- Brass coupling, with or without plating, provides corrosion resistance.
- Red anodized knob on the high side and blue anodized knob on the low side, along with distinct sizes, assist in preventing cross-contamination between sections of the system.

**Agency Approvals:**

- RC01C – UL recognized; File No. SA2709
- U.S. Patent No. RE34,781

With flow equal to a 3/8" tube, Parker process couplings evacuate refrigerant in one-sixth of the time of current service ports.

Part No.	System Side	Side Port	Finish	Trade Price
RC01C-002	Low Side	14 mm Female	Plated	\$56.10
RC01C-003	High Side	14 mm Female	Plated	\$58.76
RC01C-011	Low Side	7/16" - 20 Male SAE	Plated	\$56.66
RC01C-012	High Side	7/16" - 20 Male SAE	Plated	\$58.41

## Sight Glass Moisture Indicators

**Key Features and Benefits:**

- Available in sweat connections up to 2-1/8" and flare up to 5/8"
- Pre-cleaned solid copper extended ends permit installation without disassembly
- Flare models feature plated SAE fittings
- Compact design, low silhouette
- Extremely accurate, easy viewing
- Includes protective cover for indicator glass
- U.L. listed File No. SA3182

**Male SAE Flare x Male SAE Flare**

Model	Part No.	Connections	Ctn. Qty.	Ctn. Wt.	Trade Price
PSG-2	700001-002	1/4"	25	13.4	\$22.76
PSG-3	700079-001	3/8"	25	15.0	\$23.19
PSG-4	700302-001	1/2"	25	16.2	\$29.18
PSG-5	700404-002	5/8"	25	17.8	\$30.24

**Male SAE Flare x Female SAE Flare**

Model	Part No.	Connections	Ctn. Qty.	Ctn. Wt.	Trade Price
PSG-2MF	700094-001	1/4"	25	13.5	\$23.88
PSG-3MF	700093-001	3/8"	25	15.0	\$24.47
PSG-4MF	700262-002	1/2"	25	16.1	\$29.18

**ODF**

Model	Part No.	Connections	Ctn. Qty.	Ctn. Wt.	Trade Price
PSG-2S	700055-001	1/4"	25	12.1	\$22.96
PSG-3S	700132-002	3/8"	25	12.4	\$23.40
PSG-4S	700301-002	1/2"	25	12.7	\$29.18
PSG-5S	700418-001	5/8"	25	12.7	\$30.24
PSG-7S	700509-002	7/8"	25	20.9	\$44.73
PSG-9S	700548-002	1-1/8"	25	20.1	\$48.20
PSG-11S	700586-001	1-3/8"	10	11.0	\$95.97
PSG-13S	700633-001	1-5/8"	10	15.0	\$108.21
PSG-17S	700618-001	2-1/8"	10	15.0	\$130.67

**Sight Glass Repair Kit**

Model	Part No.	Connections	Ctn. Qty.	Ctn. Wt.	Trade Price
K-PSG-1	700587-001	Fits all models EXCEPT PSG-11S, -13S, and -17S.	1	.25	\$8.94
PSG-10TS	700619-001	Fits PSG-11S, -13S, and -17S.	1	.25	\$28.38

**Replaceable Core Filter Drier Shells**

**Key Features and Benefits:**

- Solid copper full flow fittings – 5/8" to 3-1/8"
- Powder paint exterior coating surpasses 500 hour ASTM salt spray tests and resists corrosion
- For suction application: removable screen
- U.L. and ULc Listed Guide SMGT-File No. SA-1756A & B
- Safe Working pressure: 650 psi
- All welded construction

**One Core Shells**

Model	Part No.	Connections	Ctn. Qty.	Ctn. Wt.	Trade Price
P-485	400700	5/8" ODF	1	12.5	\$268.22
P-487	400701	7/8" ODF	1	12.5	\$268.94
P-489	400708	1-1/8" ODF	1	12.5	\$280.39
P-4811	400709	1-3/8" ODF	1	12.5	\$291.89
P-4813	400712	1-5/8" ODF	1	12.5	\$309.91
P-4817	400714	2-1/8" ODF	1	12.5	\$314.56
P-4821	400715	2-5/8" ODF	1	12.5	\$366.29



**Two Core Shells**

Model	Part No.	Connections	Ctn. Qty.	Ctn. Wt.	Trade Price
P-967	400702	7/8" ODF	1	15.8	\$302.91
P-969	400703	1-1/8" ODF	1	15.8	\$302.91
P-9611	400710	1-3/8" ODF	1	15.8	\$325.09
P-9613	400711	1-5/8" ODF	1	15.8	\$331.40
P-9617	400716	2-1/8" ODF	1	15.8	\$357.04
P-9621	400717	2-5/8" ODF	1	15.8	\$403.88
P-9625	400718	3-1/8" ODF	1	15.8	\$423.83

**Three Core Shells**

Model	Part No.	Connections	Ctn. Qty.	Ctn. Wt.	Trade Price
P-1449	400704	1-1/8" ODF	1	19.5	\$406.05
P-14411	400705	1-3/8" ODF	1	19.5	\$406.47
P-14413	400713	1-5/8" ODF	1	19.5	\$409.83

**Four Core Shells**

Model	Part No.	Connections	Ctn. Qty.	Ctn. Wt.	Trade Price
P-19211	400706	1-3/8" ODF	1	22.7	\$470.58
P-19213	400707	1-5/8" ODF	1	22.7	\$472.76
P-19217	400720	2-1/8" ODF	1	22.7	\$524.19

**Shell Internal Component Kits**

Model	Part No.	Description	Trade Price
Bolts (8 required)	481289	5/16" x 1-3/4" Semagard Coated Steel (Sold Each)	\$10.15
Nuts (8 required)	481287	5/16" Semigard Coated Steel (Sold Each)	\$3.40
One Core - K-RC480-C	481349	(1) Outer retainer plate gasket, (1) Core positioning plate, (1) Outlet core retainer plate, (1) Outlet screen 100 mesh, (1) End spring, (3) Tie rod	\$68.47
Two Core - K-RC960-C	481359	(1) Outer retainer plate gasket, (1) Core positioning plate, (1) Core spacer plate, (1) Outlet core retainer plate, (1) Outlet screen 100 mesh, (1) End spring, (3) Tie rod	\$81.15
Three Core - K-RC1440-C	481369	(1) Outer retainer plate gasket, (1) Core positioning plate, (2) Core spacer plate, (1) Outlet core retainer plate, (1) Outlet screen 100 mesh, (1) End spring, (3) Tie rod	\$98.26
Four Core - K-RC1920-C	481379	(1) Outer retainer plate gasket, (1) Core positioning plate, (3) Core spacer plate, (1) Outlet core retainer plate, (1) Outlet screen 100 mesh, (1) End spring, (3) Tie rod	\$117.51
End Plate Gasket - 1288-01	481125	(1) 1/16" thick endplate gasket	\$8.81
Access Valve Kit	183174	1/4" SAE X 1/4" NPT Access Fitting for Endplate	\$13.04

## Replaceable Filter Drier Cores

**PCX-48 High Capacity Gold Label Core**

For use in either liquid or suction line applications, the PCX-48 offers significantly higher moisture and acid capacity than standard cores. For systems with excessive moisture concerns and polyolester oils.

**PCK-48HH Charcoal Burnout Core**

Formulated with charcoal to remove wax on low temperature systems even before problems occur. The PCK-48HH can be used in either liquid or suction line applications and also removes acids, water, solids and sludge. Recommended for refrigerant reclaim/recovery units.

**PCK-48 Burnout/Clean-up Core**

For use in either liquid or suction line applications, the PCK-48 is formulated for burnouts where wax is not the issue. It also provides general clean up of acids, varnishes, sludge and moisture.

**Z-48 Super High Capacity Core**

Most highly recommended for use with POEs. Formulated for use with the new refrigerants, blends and synthetic polyolester oils. For hi-moisture, acid, sludge and particulate removal. The Z-48 has 3 times the moisture capacity of standard cores.

**PFE-48BF Parker Filter Element**

For use in filtering out solid contaminants. Suitable for bi-directional applications, this filter features low pressure drop and filtration capabilities down to 10 microns. It is also interchangeable with other manufacturers' filters.

**PCK-100 High Capacity Core**

For use in either liquid or suction line applications, the PCK-100 provides the lowest pressure drop possible while retaining high filter capacity. The PCK-100 offers high water and acid capabilities to assure fast system clean-up. Ideal for corrective or preventative maintenance programs.

Model	Part No.	Size	Ctn. Qty.	Ctn. Wt.	Trade Price
PCW-42	404406P	42 Cu. In.	10	16.60	\$34.99
PCX-48	450096	48 Cu. In.	12	23.10	\$51.02
PCK-48HH	450095-001	48 Cu. In.	12	23.10	\$46.88
PCK-48	031810-00	48 Cu. In.	12	23.10	\$31.18
PCK-100	031367-00	100 Cu. In.	4	13.30	\$114.02
PC-10098HH	404405P	100 Cu. In.	6	13.30	\$108.62
PFE48-BF	031858-00	48 Cu. In.	12	8.00	\$37.84
Z48	031919-00	48 Cu. In.	12	23.10	\$62.16

All filter drier cores are compatible with R410A

**Condensing Unit Base Mount Service Valves**

**Key Features and Benefits:**

- All brass body and stem
- 3/8" to 7/8" ODF sweat extended copper connection
- Rated 680 PSI for use with R410A



Model	Part No.	Connections	Trade Price
QL171L-06-06**	277765-061	3/8" ODF With Left Hand Access Fitting	\$56.07
QL171R-06-06	278395-061	3/8" ODF With Right Hand Access Fitting	\$56.07
QL171R-08-08	278397-081	1/2" ODF With Right Hand Access Fitting	\$116.48
QL171R-10-10	278399-101	5/8" ODF With Right Hand Access Fitting	\$106.36
QL171R-12-12	278399-121	3/4" ODF With Right Hand Access Fitting	\$124.82
QL171R-14-14	278401-141	7/8" ODF With Right Hand Access Fitting	\$134.95

\*\* Access fitting on left looking directly at field connection.  
This allows side by side mounting with suction valve.

**Replacement Caps for QL Service Valves**

Model	Part No.	Description	Trade Price
FD67-1425-06	FD67-1425-06	QL Small Cap for 3/8" Valves Only	\$3.45
FD67-1425-10	FD67-1425-10	QL Medium Cap for 1/2", 5/8" and 3/4" Valves	\$6.69
FD67-1425-14	FD67-1425-14	QL Large Cap for 7/8" Valves Only	\$8.10

**Parker Tools and Accessories**

Model	Part No.	Description	Trade Price
Stem kit Standard	053983-00	Standard Stem Tool Kit Wrench Adapters ( 3/16" thru 5/16" )	\$21.67
Stem kit Carrier	054258-00	Carrier Stem Tool Kit Wrench Adapters ( 3/16" thru 5/16" short & long )	\$30.21

**Rolo-Flair Rotary Flaring Tool**

**Features and Benefits:**

- Precision burnished 45 degree flares
- Depth gauge automatically positions tube for correct flare
- Flares copper and aluminum alloy tubing



Model	Flare Sizes	Trade Price
945TH	1/8" Thru 3/4" OD Tubing	\$205.06

## Suction Line Accumulators

**Key Features and Benefits:**

- Solid copper connections
- “U” tube design for maximum flow of refrigerant and minimum oil entrapment
- Inlet flow deflector guides refrigerant toward wall for smooth tangential flow and gradual expansion
- “U” tubed entrance is positioned behind the inlet flow deflector to prevent unwanted liquid refrigerant from entering or damaging compressor
- Metering orifice matched to system capacity assures optimum liquid refrigerant and oil flow to compressor
- Protective screen and orifice assembly on “U” tube protects against contaminants affecting metering function
- Fittings and “U” tube are matched to accumulator holding capacity and total system charge for minimum pressure drop and maximum refrigerant flow

Model	Part No.	Diameter	Height	Fittings	LBS. R-22	Ctn. Wt.	Trade Price
VA-31-4S	470106	3"	10"	1/2" ODF	2	3.0	\$56.92
VA-31-5S	470107	3"	10"	5/8" ODF	2.5	3.0	\$63.99
VA-35-5S	470049	3"	15"	5/8" ODF	3.5	4.0	\$64.20
VA-35-6S	470093	3"	15"	3/4" ODF	3.5	4.0	\$65.42
PA4065-9-5C	960119	4"	9"	5/8" ODF	3.8	3.5	\$75.88
PA4065-9-6C	960120	4"	9"	3/4" ODF	3.8	3.5	\$67.33
VPA-589-6SRD	470110	5"	9"	3/4" ODF	5.9	3.5	\$73.99
VPA-5811-6SRD	470112	5"	11"	3/4" ODF	7	5.5	\$75.32
VPA-5811-7SRD	470069	5"	11"	7/8" ODF	7	5.5	\$80.12
VPA-5812-7SRD	470070	5"	12"	7/8" ODF	8	5.0	\$84.04
VPA-589-7SRD	470111	5"	9"	7/8" ODF	6	5.0	\$74.15
VPA-5815-7SRD	470115	5"	15"	7/8" ODF	10	6.5	\$80.64
VPA-5817-7SRD	470116	5"	17"	7/8" ODF	11.3	6.5	\$88.16
VA-610-9SRD	470118	6"	14"	1-1/8" ODF	12.0	18.0	\$145.44
VA-611-9SRD	470065	6"	15"	1-1/8" ODF	12.0	21.0	\$150.92
VA-611-11SRD	470063	6"	15"	1-3/8" ODF	13.0	22.0	\$152.69
VA-615-11SRD	470066	6"	20"	1-3/8" ODF	18.0	24.0	\$160.80
VA-616-13SRD	470068	6"	19-1/2"	1-3/8" ODF	20	25.0	\$164.02



## Copper Spring Loaded Check Valves

**Key Features and Benefits:**

- Straight flow through design yields high flow capacities for small diameter valve bodies
- Metal-to-metal seating - stainless steel to brass
- Corrosion resistant construction (stainless steel, brass, copper)
- UL recognized for 750 psig design pressure file no. SA3604



Model	Part No.	Connections	Packaging	Trade Price
CV4P-6FS-6FS	274037-11	3/8" ODF	Pegboard ready, 1 per bag.	\$16.84
CV5P-8FS-8FS	274037-12	1/2" ODF	Pegboard ready, 1 per bag.	\$18.12
CV7P-10FS-10FS	274037-13	5/8" ODF	Pegboard ready, 1 per bag.	\$36.69
CV9P-14FS-14FS	274037-14	7/8" ODF	Pegboard ready, 1 per bag.	\$58.85
CV11P-18FS-18FS	274037-15	1-1/8" ODF	Pegboard ready, 1 per bag.	\$70.13



**Copper Service Filter-Driers**

**Key Features and Benefits:**

- 100 percent XH-9 molecular sieve is specially formulated for the new refrigerants and blends, including 134a, 404A , 507 and R410A.
- Compatible with mineral oils and the new synthetics (POEs)
- All copper construction for corrosion resistance
- Rated for 750PSI working pressure
- UL recognized and CSA certified



Model	Part No.	Molecular Sieve	Inlet	Outlet	Trade Price
619	032142-04	10g XH9	1/4"	0.089 -.092 Cap. Tube	\$16.95
620	032133-02	20g XH9	1/4"	1/4"	\$20.79
621	032143-01	20g XH9	1/4"	0.089 -.092 Cap. Tube	\$14.80
Little Giant-712	032092-01	10g XH9	1/4"	0.089 -.092 Cap. Tube	\$9.64
Hercules-319	032144-01	30gXH9	5/16"	0.127 -.130 Cap. Tube	\$19.46
MMS-200 Step down drier	032134-01		1/4"	3/16"	\$13.96
			5/16"	1/4"	
			3/8"	5/16"	
MMS-100 (3 in a bag)	058198-01	10g XH9	1/4"	1/4"	\$6.08
MMS-80 (3 in a bag)	058070-01	10g XH9	1/4"	3/16"	\$6.27

**Copper Driers - Bulk Package**

Model	Part No.	Inlet	Outlet	Ctn. Qty.	Ctn. Wt.	Trade Price	
619	032142-00	1/4"	0.089 -.092 Cap. Tube	100	20.8	\$15.85	
620	032133-00	1/4"	1/4"	100	28.6	\$19.28	
621	032143-00	1/4"	0.089 -.092 Cap. Tube	100	24.8	\$13.83	
Little Giant-712	032092-00	1/4"	0.089 -.092 Cap. Tube	100	16.2	\$8.60	
Hercules-319	032144-00	5/16"	0.127 -.130 Cap. Tube	100	42.4	\$18.64	
MMS-200 Step down drier.	032134-00		1/4"	3/16"	100	26.1	\$13.11
			5/16"	1/4"			
			3/8"	5/16"			
MMS-100	058198-00	1/4"	1/4"	100	13.3	\$5.63	
MMS-80	058070-00	1/4"	3/16"	100	13.1	\$6.08	
C073S	032145-00	3/8"	3/8"			\$23.27	

**Copper Solid Core Suction Line Driers**

**Key Features and Benefits:**

- High-acid solid core design
- Flow capacities from 1/6 through 2-1/2 tons
- Access valve to check system pressure or charge through
- Applications include refrigerators, freezers, ductless air conditioning and PTAC units

Model	Part No.	Connections	Ctn. Qty.	Ctn. Wt.	Trade Price
CuSLD 5/16	031589-00	5/16" ODF	50	48.0	\$35.50



## Copper Solid Core Liquid Line Filter-Driers

**Key Features and Benefits:**

- Solid core 100 percent molecular sieve drier
- Super high moisture capacity; large flow capacity

- Compatible with R410A
- All copper body is corrosion resistant
- U.L. recognized

Model	Part No.	Connections	Ctn. Qty.	Ctn. Wt.	Trade Price
CuLLD5-3S	032056-10	3/8" ODF	40	46.0	\$26.87
CuLLD8-3S	032055-10	3/8" ODF	40	46.0	\$37.77
CuLLD16-3S	032057-10	3/8" ODF	40	48.0	\$44.09



## Copper Strainers

**Key Features and Benefits:**

- Copper construction to resist corrosion
- Rated for R410A high side pressure

- Available in a variety of inlet and outlet sizes
- UL recognized (File SA-8570) and CSA certified (LR-87950)

Model	Part No.	Connections	Trade Price
PS-2S	054816-03	1/4" ODF	\$8.49
PS-3S	054816-02	3/8" ODF	\$9.64
PS-4S	056822-00	1/2" ODF	\$11.17
PS-5S	052290-04	5/8" ODF	\$14.58
PS-7S	052290-03	7/8" ODF	\$17.65

## 5500 Series - Resealable Quick Connect Couplings

Resealable quick-connect couplings specifically designed for air conditioning and refrigeration applications

## Female Coupling Half

Part No.	Connection	Coupling Length	Wgt. (Ozs.)	Trade Price
5505-04B-06	1/4" ODS	3.69"	4.85	\$34.67
5505-04B-08	1/4" ODS	3.69"	4.85	\$35.76
5505-06B-06	3/8" ODS	3.66"	4.85	\$35.76
5505-06B-08	3/8" ODS	3.66"	4.85	\$36.36
5505-08B-08	1/2" ODS	3.66"	4.85	\$35.76
5505-10B-08	5/8" ODS	3.66"	4.85	\$35.76
5505-10-12	5/8" ODS	4.09"	10.58	\$48.04
5505-12-12	3/4" ODS	4.19"	10.58	\$48.04
5505-14-12	7/8" ODS	4.19"	10.58	\$48.04
5505-14-16	7/8" ODS	4.96"	18.34	\$87.23



## Male Coupling Half

Part No.	Connection	Coupling Length	Wgt. (Ozs.)	Trade Price
5502-04B-06	1/4" ODS	3.26"	3.11	\$33.00
5502-04B-08	1/4" ODS	3.26"	3.11	\$34.00
5502-06B-06	3/8" ODS	3.24"	3.11	\$34.68
5502-06B-08	3/8" ODS	3.24"	3.11	\$36.00
5502-08B-08	1/2" ODS	3.20"	3.11	\$35.50
5502-10B-08	5/8" ODS	3.18"	3.11	\$35.50
5502-10-12	5/8" ODS	3.70"	7.31	\$43.64
5502-12-12	3/4" ODS	3.75"	7.31	\$47.69
5502-14-12	7/8" ODS	3.75"	7.31	\$47.69
5502-14-16	7/8" ODS	4.37"	10.81	\$85.90

## Complete Couplings

Part No.	Connection	Coupling Length	Wgt. (Ozs.)	Trade Price
5500-04-08	1/4" ODS	7.96"	7.96	\$56.61
5500-06-08	3/8" ODS	6.51"	7.96	\$64.40
5500-08-08	1/2" ODS	6.47"	7.96	\$64.40
5500-10-08	5/8" ODS	6.39"	7.96	\$64.40
5500-10-12	5/8" ODS	6.39"	7.96	\$92.02
5500-12-12	3/4" ODS	7.30"	17.90	\$92.02
5500-14-12	7/8" ODS	7.30"	17.90	\$92.75
5500-14-16	7/8" ODS	8.73"	29.15	\$204.56
5500-18-16	1-1/8" ODS	8.85"	29.15	\$204.56

## Mounting Flange (Steel)

Part No.	Body Size	Diameter	Wgt. (Ozs.)	Trade Price
150-22-8	08	2.00"	.48	\$2.13
150-22-12	12	2.50"	.71	\$4.75
150-22-16	16	2.75"	.72	\$10.92

## Steel Dust Caps (Male Half)

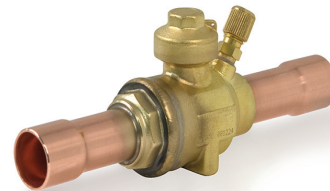
Part No.	Connection Size	Wgt. (Ozs.)	Trade Price
5400-S6-4	1/4" ODS	0.04	\$3.99
5400-S6-8	1/2" ODS	1.08	\$6.10
5400-S6-12	3/4" ODS	2.38	\$6.90
5400-S6-16	1" ODS	4.98	\$14.95

## Steel Dust Plugs (Female Half)

Part No.	Connection Size	Wgt. (Ozs.)	Trade Price
5400-S8-4	1/4" ODS	0.04	\$6.79
5400-S8-8	1/2" ODS	1.08	\$6.10
5400-S8-12	3/4" ODS	2.38	\$7.74
5400-S8-16	1" ODS	4.98	\$14.88

## Refrigeration and Air Conditioning Ball Valves

- Forged brass body construction with extended copper ends and access fitting
- Full size ports on sizes 1/4" through 2-1/8"
- Ball internal relief port design ensures positive shut-off in either direction
- Dual Teflon seals surround the polished brass ball to prevent leakage
- All EBVP ball valves are bi-directional and may be installed in any position
- Full refrigeration service temperature range -40F to +325F (-40C to +149C)
- Design working pressure: 700 psig (49 bar)



Model	Part No.	Cv Rating	ODF Connection	Port Size	Access Fitting	Trade Price
EBVP-1020	502053	2.1	1/4"	.50"	YES	\$44.14
EBVP-1030	502054	4.3	3/8"	.50"	YES	\$44.06
EBVP-1040	502055	7.0	1/2"	.50"	YES	\$43.75
EBVP-1050	502056	13.9	5/8"	.50"	YES	\$47.80
EBVP-1060	502057	21.0	3/4"	.75"	YES	\$60.71
EBVP-1070	502058	30.3	7/8"	.75"	YES	\$60.71
EBVP-1090	502059	61.3	1-1/8"	1.00"	YES	\$89.40
EBVP-1110	502060	85.2	1-3/8"	1.25"	YES	\$144.36
EBVP-1130	502061	212	1-5/8"	1.50"	YES	\$161.48
EBVP-1170	502062	285	2-1/8"	2.00"	YES	\$381.02
EBVP-2210	502063	238	2-5/8"	2.00"	YES	\$891.17
EBVP-2250	502065	324	3-1/8"	2.50"	YES	\$1335.47

## Replacement stem caps for EBVP Ball Valves includes seal gasket

Part No.	Fits Ball Valve Model	Package Quantity	Trade Price
183390	EBVP-1020 thru EBVP-1050	5	\$16.96
183391	EBVP-1060 thru EBVP-1090	5	\$19.79
183392	EBVP-1110 thru EBVP-1130	5	\$33.23
183393	EBVP-1170 thru EBVP-2250	5	\$62.02

**N & NE Series**

This small flare brass valve series is ideally suited where space is at a premium. Its stainless steel power element and compact body has always made it the first choice for installation in commercial refrigeration systems. External equalized models are provided with 30" capillary and 1/4" SAE flare nut, eliminating the need to run a separate equalizer line. Medium, low & MOP (X) charges are available as noted below.

**Applications:**

- Low profile coolers
- Beverage dispensers
- Beverage boxes
- Small chillers
- Ice machines
- Small freezers

**Key Features and Benefits:**

- Compact body
- Removable inlet screen
- Factory set superheat
- Accurate and stable control
- Right angle configuration
- 30" capillary tube
- Weight: 5.0 oz. / .14 kg



**Refrigerants R-12, R-134A, R-401A, R401B**

Model	Part No.	Nom. Tons	Inlet	Outlet	Equalizer	Trade Price
N-1/2-JW	040293-01	1/2	1/4" SAE	1/2" SAE	Internal	\$86.65
N-1/2-JW	040293-03	1/2	3/8" SAE	1/2" SAE	Internal	\$86.65
N-1/2-JX60	040293-04	1/2	3/8" SAE	1/2" SAE	Internal	\$86.65
N-1-JW	040279-01	1	3/8" SAE	1/2" SAE	Internal	\$86.65
N-2-JW	040294-01	2	3/8" SAE	1/2" SAE	Internal	\$86.65
N-2-JX60	040294-02	2	3/8" SAE	1/2" SAE	Internal	\$86.65

**Refrigerants R-22, R-407C**

Model	Part No.	Nom. Tons	Inlet	Outlet	Equalizer	Trade Price
N-1/4-VW	040077-07	1/4	1/4" SAE	1/2" SAE	Internal	\$86.65
N-1/2-VW	040270-01	1/2	1/4" SAE	1/2" SAE	Internal	\$86.65
N-1-V W	040077-06	1	3/8" SAE	1/2" SAE	Internal	\$86.65
N-3-VX100B10	031119-01	3	3/8" SAE	1/2" SAE	External	\$86.65

**Refrigerants R-402A, R-402B, R-404A, R-502, R-507**

Model	Part No.	Nom. Tons	Inlet	Outlet	Equalizer	Trade Price
N-1/2-SW	040326-05	1/2	1/4" SAE	1/2" SAE	Internal	\$86.65
N-1/2-SW	040326-01	1/2	3/8" SAE	1/2" SAE	Internal	\$86.65
N-1/2-SZ	040326-03	1/2	3/8" SAE	1/2" SAE	Internal	\$86.65
N-2-SW	040327-01	2	3/8" SAE	1/2" SAE	Internal	\$86.65

**HAE & HCAE Series Thermostatic Expansion Valves**

The H Series balanced port valve is designed specifically for air conditioning and heat pumps used in both air or water source systems. It offers features such as select indoor and/or outdoor thermostatic Rainbow Charges™, bleeds, and a variety of connection styles for the inlet, outlet and external equalizer. The HC Series adds a built-in five ton check valve for R-22, R-407C and R-410A heat pump applications with field adjustable superheat.

**Applications:**

- Air conditioning systems
- Heat pump systems
- Bi-flow (package) systems

**Key Features and Benefits:**

- Stainless steel power element
- Bypass bleeds available
- Weight: 10.7 oz. (.30 kg)
- Field adjustable superheat
- Low pressure drop internal check valve



See page 22 for our TXV KIT with valves and adapters to replace most OEM expansion valves for R-22 and R-410A Air conditioning. Refrigerants R-22, R-407C

**Refrigerants R-22, R-407C**

Model	Part No.	Nom. Tons	Application	Inlet	Outlet	Equalizer	Trade Price
HAE-3-VX100	040587-01	1-1/2 to 3	A/C	3/8" ODF	1/2" ODF	1/4" FL. NUT	\$121.54
HCAE-3-VX100	040727-01	1-1/2 to 3	A/C & Heat Pump	3/8" ODF	1/2" ODF	1/4" FL. NUT	\$97.87
HCAE-3-VX100A *	040725-01	1-1/2 to 3	A/C & Heat Pump	Chatleff	Chatleff	1/4" FL. NUT	\$134.40
HCAE-3-VX100H **	041438-06	1-1/2 to 3	A/C & Heat Pump	Chatleff	Chatleff	1/4" FL NUT	\$134.40
HAE-5-VX100	040588-01	3-1/2 to 5	A/C	3/8" ODF	5/8" ODF	1/4" FL. NUT	\$121.54
HAE-5-VX100B15	040588-02	3-1/2 to 5	A/C	3/8" ODF	5/8" ODF	1/4" FL. NUT	\$121.54
HCAE-5-VX100	040728-01	3-1/2 to 5	A/C & Heat Pump	3/8" ODF	5/8" ODF	1/4" FL. NUT	\$97.87
HCAE-5-VX100A *	040726-01	3-1/2 to 5	A/C & Heat Pump	Chatleff	Chatleff	1/4" FL. NUT	\$134.40
HCAE-5-VX100H **	041448-04	3-1/2 TO 5	A/C & Heat Pump	Chatleff	Chatleff	1/4" FL. NUT	\$134.40

\* Long pilot tube female outlet fitting

\*\* Short pilot tube female outlet fitting

**Refrigerant R-410A**

Model	Part No.	Nom. Tons	Application	Inlet	Outlet	Equalizer	Trade Price
HAE-3-ZX200	040635-01	1-1/2 to 3	A/C	3/8" ODF	1/2" ODF	1/4" FL. NUT	\$124.33
HAE-3-ZX200B15	040635-02	1-1/2 to 3	A/C	3/8" ODF	1/2" ODF	1/4" FL. NUT	\$124.33
HCAE-3-ZX200	040771-01	1-1/2 to 3	A/C & Heat Pump	3/8" ODF	1/2" ODF	1/4" FL. NUT	\$104.10
HCAE-3-ZX200A *	040769-01	1-1/2 to 3	A/C & Heat Pump	Chatleff	Chatleff	1/4" FL. NUT	\$137.48
HCAE-3-ZX200 **	041426-13	1-1/2 to 3	A/C & Heat Pump	Chatleff	Chatleff	1/4" FL NUT	\$137.48
HAE-5-ZX200	040634-01	3-1/2 to 5	A/C	3/8" ODF	5/8" ODF	1/4" FL. NUT	\$124.33
HCAE-5-ZX200	040772-01	3-1/2 to 5	A/C & Heat Pump	3/8" ODF	5/8" ODF	1/4" FL. NUT	\$104.10
HCAE-5-ZX200A *	040770-01	3-1/2 to 5	A/C & Heat Pump	Chatleff	Chatleff	1/4" FL. NUT	\$137.48
HCAE-5-ZX200 **	041436-14	3-1/2 to 5	A/C & Heat Pump	Chatleff	Chatleff	1/4" FL NUT	\$137.48
HCAE-7-ZX200B15	041447-01	7-1/2	A/C & Heat Pump	1/2" ODF	7/8" ODF	1/4" FL. NUT	\$137.48

\* Long pilot tube female outlet fitting

\*\* Short pilot tube female outlet fitting

**Thermostatic Expansion Valve Kits for Heat Pumps and Air Conditioning**

Part No.	Model No.	Outlet Fitting Adapters	Trade Price
168203	TXV KIT		\$403.51
R22 Valves Included			
040727-01	HCAE-3-VX100 1-1/2 to 3 Tons	183372 5/8" ODF x Aeroquip	
040728-01	HCAE-5-VX100 3 to 5 Tons	183373 1/2" ODF x Aeroquip	
R410A Valves Included		183374 5/8" ODF x Chatleff	
040771-01	HCAE-3-ZX200 1-1/2 to 3 Tons	183375 1/2" ODF x Chatleff	
040772-01	HCAE-5-ZX200 3-1/2 to 5 Tons	183376 1/2" ODF x 3/8" Flare	

**Expansion Valve Outlet Fitting Adapters**

Model	Part No.	Description	Trade Price
183372	183372	5/8" ODF x Aeroquip Fitting	\$13.48
183373	183373	1/2" ODF x Aeroquip Fitting	\$12.42
183374	183374	5/8" ODF x Chatleff Fitting	\$13.48
183375	183375	1/2" ODF x Chatleff Fitting	\$12.42
183376	183376	1/2" ODF x 3/8" Male Flare Fitting	\$11.99





**C & CE Series**

The C series incorporates a brass body with SAE flare fittings using balanced port construction, allowing operation over varying load conditions. Designed for use on small refrigeration and or air conditioning systems, the external equalized models are provided with a 1/4" SAE male connection. A variety of Rainbow Charges™ add further flexibility for operation and selection.

**Applications:**

- Small refrigeration systems
- Slush machines
- Air conditioning units
- Freezers
- Walk-in coolers
- Refrigerated cases
- Rail & transport refrigeration

**Features and Benefits**

- Balanced port
- Removable power element
- Inlet strainer
- 60" capillary tube
- Field adjustable superheat
- 1/4" SAE external equalizer
- Weight: 1.0 lbs / 0.45 kg

**Refrigerants R-12, R-134A, R-401A, R-401B**

Model	Part No.	Nom. Tons	Inlet	Outlet	Equalizer	Trade Price
C-AA-JW	040329-01	1/6 to 1/4	1/4" SAE	1/2" SAE		\$103.50
C-AA-JX60	040329-02	1/6 to 1/4	1/4" SAE	1/2" SAE		\$103.50
CE-AA-JW	040330-01	1/6 to 1/4	1/4" SAE	1/2" SAE	1/4" SAE	\$110.66
C-A-JW	040281-01	1/2 to 1	3/8" SAE	1/2" SAE		\$103.50
C-A-JX60	040281-02	1/2 to 1	3/8" SAE	1/2" SAE		\$103.50
CE-A-JW	040282-01	1/2 to 1	3/8" SAE	1/2" SAE	1/4" SAE	\$110.66
CE-A-JX60	040282-02	1/2 to 1	3/8" SAE	1/2" SAE	1/4" SAE	\$110.66
C-B-JW	040331-01	1 to 2	3/8" SAE	1/2" SAE		\$103.50
C-B-JX60	040331-02	1 to 2	3/8" SAE	1/2" SAE		\$103.50
CE-B-JW	040332-01	1 to 2	3/8" SAE	1/2" SAE	1/4" SAE	\$110.66
CE-B-JX60	040332-02	1 to 2	3/8" SAE	1/2" SAE	1/4" SAE	\$110.66
C-C-JW	040295-01	2 to 3	3/8" SAE	1/2" SAE		\$103.50
C-C-JX60	040295-02	2 to 3	3/8" SAE	1/2" SAE		\$103.50
CE-C-JW	040283-01	2 to 3	3/8" SAE	1/2" SAE	1/4" SAE	\$110.66
CE-C-JX60	040283-02	2 to 3	3/8" SAE	1/2" SAE	1/4" SAE	\$110.66
C-D-JW	040398-05	3 to 5	3/8" SAE	5/8" SAE		\$103.50
CE-D-JX60	040398-12	3 to 5	3/8" SAE	5/8" SAE	1/4" SAE	\$110.66

**Refrigerants R-22, R-407C**

Model	Part No.	Nom. Tons	Inlet	Outlet	Equalizer	Trade Price
C-AA-VW	040289-01	1/3 to 1/2	1/4" SAE	1/2" SAE		\$103.50
C-AA-VX35	040289-02	1/3 to 1/2	1/4" SAE	1/2" SAE		\$103.50
C-AA-VX100	040289-04	1/3 to 1/2	1/4" SAE	1/2" SAE		\$103.50
CE-AA-VW	040290-01	1/3 to 1/2	1/4" SAE	1/2" SAE	1/4" SAE	\$110.66
CE-AA-VX35	040290-02	1/3 to 1/2	1/4" SAE	1/2" SAE	1/4" SAE	\$110.66
CE-AA-VX100	040290-04	1/3 to 1/2	1/4" SAE	1/2" SAE	1/4" SAE	\$110.66
C-A-VW	040241-01	3/4 to 1-1/2	3/8" SAE	1/2" SAE		\$103.50
C-A-VX35	040241-02	3/4 to 1-1/2	3/8" SAE	1/2" SAE		\$103.50
C-A-VX100	040241-04	3/4 to 1-1/2	3/8" SAE	1/2" SAE		\$103.50
CE-A-VW	040275-01	3/4 to 1-1/2	1/4" SAE	1/2" SAE	1/4" SAE	\$110.66
CE-A-VW	040242-01	3/4 to 1-1/2	3/8" SAE	1/2" SAE	1/4" SAE	\$110.66

**Parker Hannifin Corporation**

Broadview, IL 60155

ph: (800) 742-2681 fax: (800) 241-2872

cicaftermarket@parker.com ■ www.parker.com/coolparts



## Trade Price Schedule

## Thermostatic Expansion Valves

Refrigerants R-22, R-407C (cont.)

Model		Nom. Tons	Inlet	Outlet	Equalizer	Trade Price
CE-A-VX35	040242-02	3/4 to 1-1/2	3/8" SAE	1/2" SAE	1/4" SAE	\$110.66
CE-A-VX100	040242-04	3/4 to 1-1/2	3/8" SAE	1/2" SAE	1/4" SAE	\$110.66
C-B-VW	040379-01	1-1/2 to 3	3/8" SAE	1/2" SAE		\$103.50
C-B-VX100	040379-04	1-1/2 to 3	3/8" SAE	1/2" SAE		\$103.50
CE-B-VW	040380-01	1-1/2 to 3	3/8" SAE	1/2" SAE	1/4" SAE	\$110.66
CE-B-VX35	040380-02	1-1/2 to 3	3/8" SAE	1/2" SAE	1/4" SAE	\$110.66
CE-B-VX100	040380-04	1-1/2 to 3	3/8" SAE	1/2" SAE	1/4" SAE	\$110.66
CE-B-VZ	040380-05	1-1/2 to 3	3/8" SAE	1/2" SAE	1/4" SAE	\$110.66
C-C-VW	040222-06	3 to 5	3/8" SAE	1/2" SAE		\$103.50
C-C-VX100	040222-04	3 to 5	3/8" SAE	1/2" SAE		\$103.50
CE-C-VW	040223-06	3 to 5	3/8" SAE	1/2" SAE	1/4" SAE	\$110.66
CE-C-VX100	040223-04	3 to 5	3/8" SAE	1/2" SAE	1/4" SAE	\$110.66

### C & CE Series

Refrigerants R-402A, R-402B, R-404A, R-502, R-507

Model	Part No.	Nom. Tons	Inlet	Outlet	Equalizer	Trade Price
C-AA-SW	040333-01	1/6 to 1/4	1/4" SAE	1/2" SAE		\$103.50
C-AA-SX35	040333-02	1/6 to 1/4	1/4" SAE	1/2" SAE		\$103.50
C-AA-SZ	040333-03	1/6 to 1/4	1/4" SAE	1/2" SAE		\$103.50
CE-AA-SW	040334-01	1/6 to 1/4	1/4" SAE	1/2" SAE	1/4" SAE	\$110.66
CE-AA-SX35	040334-02	1/6 to 1/4	1/4" SAE	1/2" SAE	1/4" SAE	\$110.66
CE-AA-SZ	040334-03	1/6 to 1/4	1/4" SAE	1/2" SAE	1/4" SAE	\$110.66
C-A-SW	040335-01	1/2 to 1	3/8" SAE	1/2" SAE		\$103.50
C-A-SX35	040335-02	1/2 to 1	3/8" SAE	1/2" SAE		\$103.50
C-A-SZ	040335-03	1/2 to 1	3/8" SAE	1/2" SAE		\$103.50
CE-A-SW	040336-01	1/2 to 1	3/8" SAE	1/2" SAE	1/4" SAE	\$110.66
CE-A-SX35	040336-02	1/2 to 1	3/8" SAE	1/2" SAE	1/4" SAE	\$110.66
CE-A-SZ	040336-03	1/2 to 1	3/8" SAE	1/2" SAE	1/4" SAE	\$110.66
C-B-SW	040337-01	1 to 2	3/8" SAE	1/2" SAE		\$103.50
C-B-SX35	040337-02	1 to 2	3/8" SAE	1/2" SAE		\$103.50
CE-B-SW	040338-01	1 to 2	3/8" SAE	1/2" SAE	1/4" SAE	\$110.66
CE-B-SX35	040338-02	1 to 2	3/8" SAE	1/2" SAE	1/4" SAE	\$110.66
CE-B-SZ	040338-03	1 to 2	3/8" SAE	1/2" SAE	1/4" SAE	\$110.66
C-C-SW	040339-01	2 to 3-1/2	3/8" SAE	1/2" SAE		\$103.50
C-C-SZ	040339-03	2 to 3-1/2	3/8" SAE	1/2" SAE		\$103.50
CE-C-SW	040340-01	2 to 3-1/2	3/8" SAE	1/2" SAE	1/4" SAE	\$110.66
CE-C-SX35	040340-02	2 to 3-1/2	3/8" SAE	1/2" SAE	1/4" SAE	\$110.66
CE-C-SZ	040340-03	2 to 3-1/2	3/8" SAE	1/2" SAE	1/4" SAE	\$110.66

**SC & SCE Series**

The SC(E) series refrigeration right angle brass body expansion valve incorporates a removable inlet strainer, and is an ideal choice for commercial refrigeration and supermarket applications. New Rainbow Charges™ are noted below for use on medium temperature ("W" charges), low temperature ("Z" charges) or MOP ("X" charges).

**Applications:**

- Supermarket Cases
- Self-contained Cases
- Walk-in Coolers/Freezers
- Ice Machines
- Salad Bars
- Transport Refrigeration

**Key Features and Benefits:**

- Removable power element
- 60" capillary tube
- Removable inlet strainer
- Field adjustable superheat
- 1/4" ODF external equalizer
- W, Z or MOP (X) charges available
- Weight: 1.0 lbs / 0.45 kg



Refrigerants R-12, R-134A, R-401A, R-401B

Model	Part No.	Nom. Tons	Inlet	Outlet	Equalizer	Trade Price
SCE-AA-JW	040413-05	1/6 to 1/4	3/8" ODF	1/2" ODF	1/4" ODF	\$139.02
SCE-A-JW	040413-07	1/2 to 1	3/8" ODF	1/2" ODF	1/4" ODF	\$139.02
SCE-B-JW	040414-01	1 to 2	3/8" ODF	1/2" ODF	1/4" ODF	\$139.02

Refrigerants R-22, R-407C (Replaces the EG and EGE Series)

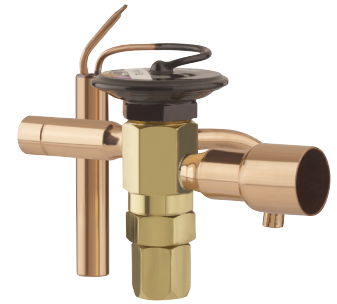
Model	Part No.	Nom. Tons	Inlet	Outlet	Equalizer	Trade Price
SCE-AAA-VW	040406-09	1/6 to 1/3	3/8" ODF	1/2" ODF	1/4" ODF	\$139.02
SCE-AA-VW	040406-13	1/3 to 1/2	3/8" ODF	1/2" ODF	1/4" ODF	\$139.02
SCE-AA-VZ	040406-15	1/3 to 1/2	3/8" ODF	1/2" ODF	1/4" ODF	\$139.02
SCE-A-VW	040407-09	3/4 to 1-1/2	3/8" ODF	1/2" ODF	1/4" ODF	\$139.02
SCE-A-VZ	040407-11	3/4 to 1-1/2	3/8" ODF	1/2" ODF	1/4" ODF	\$139.02
SCE-B-VW	040408-13	1-1/2 to 3	3/8" ODF	1/2" ODF	1/4" ODF	\$139.02
SCE-B-VZ	040407-15	1-1/2 to 3	3/8" ODF	1/2" ODF	1/4" ODF	\$139.02

Refrigerants R-402A, R-402B, R-404A, R-502, R-507

Model	Part No.	Nom. Tons	Inlet	Outlet	Equalizer	Trade Price
SCE-AAA-SZ	040415-15	1/8 to 1/6	3/8" ODF	1/2" ODF	1/4" ODF	\$139.02
SCE-AA-SW	040416-09	1/6 to 1/4	3/8" ODF	1/2" ODF	1/4" ODF	\$139.02
SCE-AA-SZ	040416-11	1/6 to 1/4	3/8" ODF	1/2" ODF	1/4" ODF	\$139.02
SCE-A-SW	040416-13	1/2 to 1	3/8" ODF	1/2" ODF	1/4" ODF	\$139.02
SCE-A-SZ	040416-15	1/2 to 1	3/8" ODF	1/2" ODF	1/4" ODF	\$139.02
SCE-B-SW	040417-09	1 to 2	3/8" ODF	1/2" ODF	1/4" ODF	\$139.02
SCE-B-SX35	040417-10	1 to 2	3/8" ODF	1/2" ODF	1/4" ODF	\$139.02
SCE-B-SZ	040417-11	1 to 2	3/8" ODF	1/2" ODF	1/4" ODF	\$139.02

**EC & ECE Series**

The EC series features extended ODF solder connections, brass body, and balanced port design. It is suited for both refrigeration and air conditioning applications. Rainbow Charges™ are indicated in the chart below for medium temperature “W” charges, low temperature “Z” charges or MOP “X” charge for those applications.



**Applications:**

- Small chillers
- Air conditioning units
- Freezers
- Walk-in boxes
- Refrigerated cases

**Key Features and Benefits:**

- Extended ODF connections
- Balanced port design
- 60” capillary tube
- Removable power element
- Field adjustable superheat
- 1/4” ODF external equalizer
- Rainbow charges available
- Weight: 1.0 lbs / 0.45 kg

**Refrigerants R-12, R-134A, R-401A, R-401B**

Model	Part No.	Nom. Tons	Inlet	Outlet	Equalizer	Trade Price
EC-AA-JW	040311-01	1/6 to 1/4	1/4” ODF	1/2” ODF		\$112.98
EC-A-JW	040296-01	1/2 to 1	3/8” ODF	1/2” ODF		\$112.98
EC-A-JX60	040358-02	1/2 to 1	3/8” ODF	1/2” ODF		\$112.98
ECE-A-JW	040297-01	1/2 to 1	3/8” ODF	1/2” ODF	1/4” ODF	\$119.33
ECE-B-JW	040314-01	1 to 2	1/2” ODF	5/8” ODF	1/4” ODF	\$119.33
EC-C-JW	040298-01	2 to 3	1/2” ODF	7/8” ODF		\$112.98
ECE-C-JW	040299-05	2 to 3	3/8” ODF	5/8” ODF	1/4” ODF	\$119.33
ECE-C-JW	040432-01	2 to 3	1/2” ODF	5/8” ODF	1/4” ODF	\$119.33
ECE-C-JW	040299-01	2 to 3	1/2” ODF	7/8” ODF	1/4” ODF	\$119.33
ECE-D-JW	040299-03	3 to 5	5/8” ODF	7/8” ODF	1/4” ODF	\$119.33
ECE-D-JX60	040299-04	3 to 5	5/8” ODF	7/8” ODF	1/4” ODF	\$119.33

**Refrigerants R-22, R-407C**

Model	Part No.	Nom. Tons	Inlet	Outlet	Equalizer	Trade Price
EC-AA-VW	040367-01	1/3 to 1/2	1/4” ODF	1/2” ODF		\$112.98
ECE-AA-VW	040368-01	1/3 to 1/2	1/4” ODF	1/2” ODF	1/4” ODF	\$119.33
ECE-AA-VW	040349-05	1/3 to 1/2	1/4” ODF	1/2” ODF	1/4” ODF	\$119.33
ECE-AA-VX100	040368-04	1/3 to 1/2	1/4” ODF	1/2” ODF	1/4” ODF	\$119.33
ECE-AA-VZ	040349-07	1/3 to 1/2	1/4” ODF	1/2” ODF	1/4” ODF	\$119.33
ECE-A-VW	040350-05	3/4 to 1-1/2	3/8” ODF	1/2” ODF	1/4” ODF	\$119.33
ECE-A-VX100	040246-10	3/4 to 1-1/2	3/8” ODF	1/2” ODF	1/4” ODF	\$119.33
ECE-A-VZ	040350-07	3/4 to 1-1/2	3/8” ODF	1/2” ODF	1/4” ODF	\$119.33
ECE-B-VW	040351-05	1-1/2 to 3	3/8” ODF	1/2” ODF	1/4” ODF	\$119.33
ECE-B-VW	040374-01	1-1/2 to 3	1/2” ODF	5/8” ODF	1/4” ODF	\$119.33
ECE-B-VZ	040351-07	1-1/2 to 3	3/8” ODF	1/2” ODF	1/4” ODF	\$119.33
ECE-B-VX35	040374-02	1-1/2 to 3	1/2” ODF	5/8” ODF	1/4” ODF	\$119.33
ECE-B-VX100	040206-35	1-1/2 to 3	3/8” ODF	1/2” ODF	1/4” ODF	\$119.33
ECE-B-VX100	040374-06	1-1/2 to 3	3/8” ODF	5/8” ODF	1/4” ODF	\$119.33
ECE-B-VX100	040374-07	1-1/2 to 3	1/2” ODF	5/8” ODF	1/4” ODF	\$119.33
ECE-B-VX100	040374-04	1-1/2 to 3	1/2” ODF	5/8” ODF	1/4” ODF	\$119.33
ECE-C-VW	040206-05	3 to 5	1/2” ODF	7/8” ODF	1/4” ODF	\$119.33
ECE-C-VX35	040206-06	3 to 5	1/2” ODF	7/8” ODF	1/4” ODF	\$119.33
ECE-C-VX100	040206-33	3 to 5	3/8” ODF	1/2” ODF	1/4” ODF	\$119.33
ECE-C-VX100	040206-21	3 to 5	3/8” ODF	5/8” ODF	1/4” ODF	\$119.33
ECE-C-VX100	040206-44	3 to 5	1/2” ODF	5/8” ODF	1/4” ODF	\$119.33

## Trade Price Schedule

## Thermostatic Expansion Valves

### EC & ECE Series cont. Refrigerants R-22, R-407C

Model	Part No.	Nom. Tons	Inlet	Outlet	Equalizer	Trade Price
ECE-C-VX100	040206-22	3 to 5	1/2" ODF	7/8" ODF	1/4" ODF	\$119.33
ECE-C-VX100	040206-28	3 to 5	5/8" ODF	7/8" ODF	1/4" ODF	\$119.33
ECE-C-VX100B15	040262-01	3 to 5	1/2" ODF	5/8" ODF	1/4" ODF	\$119.33
ECE-D-VW	040206-46	5 to 8	5/8" ODF	7/8" ODF	1/4" ODF	\$119.33
ECE-D-VX100	040206-16	5 to 8	1/2" ODF	7/8" ODF	1/4" ODF	\$119.33
ECE-D-VX100	040206-20	5 to 8	5/8" ODF	7/8" ODF	1/4" ODF	\$119.33
ECE-D-VX100B15	040262-02	5 to 8	5/8" ODF	7/8" ODF	1/4" ODF	\$119.33

### Refrigerants R-402A, R-402B, R-404A, R-502, R-507

Model	Part No.	Nom. Tons	Inlet	Outlet	Equalizer	Trade Price
EC-AA-SW	040315-01	1/6 to 1/4	1/4" ODF	1/2" ODF		\$112.98
EC-AA-SX35	040315-02	1/6 to 1/4	1/4" ODF	1/2" ODF		\$112.98
EC-AA-SZ	040361-03	1/6 to 1/4	1/4" ODF	1/2" ODF		\$112.98
ECE-AA-SW	040316-01	1/6 to 1/4	1/4" ODF	1/2" ODF	1/4" ODF	\$119.33
ECE-AA-SX35	040316-02	1/6 to 1/4	1/4" ODF	1/2" ODF	1/4" ODF	\$119.33
EC-A-SW	040317-01	1/2 to 1	3/8" ODF	1/2" ODF		\$112.98
EC-A-SX35	040317-02	1/2 to 1	3/8" ODF	1/2" ODF		\$112.98
EC-A-SZ	040362-03	1/2 to 1	3/8" ODF	1/2" ODF		\$112.98
ECE-A-SW	040318-01	1/2 to 1	3/8" ODF	1/2" ODF	1/4" ODF	\$119.33
ECE-A-SX35	040318-02	1/2 to 1	3/8" ODF	1/2" ODF	1/4" ODF	\$119.33
ECE-A-SZ	040362-07	1/2 to 1	3/8" ODF	1/2" ODF	1/4" ODF	\$119.33
ECE-B-SW	040363-05	1 to 2	3/8" ODF	1/2" ODF	1/4" ODF	\$119.33
ECE-B-SW	040320-01	1 to 2	1/2" ODF	5/8" ODF	1/4" ODF	\$119.33
ECE-B-SX35	040320-02	1 to 2	1/2" ODF	5/8" ODF	1/4" ODF	\$119.33
ECE-B-SZ	040363-07	1 to 2	3/8" ODF	1/2" ODF	1/4" ODF	\$119.33
ECE-C-SW	040322-01	2 to 3-1/2	1/2" ODF	7/8" ODF	1/4" ODF	\$119.33
ECE-C-SZ	040364-07	2 to 3-1/2	3/8" ODF	1/2" ODF	1/4" ODF	\$119.33
ECE-C-SX110	040322-04	2 to 3-1/2	1/2" ODF	7/8" ODF	1/4" ODF	\$119.33
ECE-D-SW	040322-05	3-1/2 to 6	5/8" ODF	7/8" ODF	1/4" ODF	\$119.33
ECE-D-SZ	040322-07	3-1/2 to 6	5/8" ODF	7/8" ODF	1/4" ODF	\$119.33

### Refrigerants R-410A

Model	Part No.	Nom. Tons	Inlet	Outlet	Equalizer	Trade Price
ECE-D-ZX200	168736P	5 to 8	5/8" ODF	7/8" ODF	1/4" ODF	\$142.39
ECE-12-1/2-ZX200	168799P	8 to 12-1/2	5/8" ODF	7/8" ODF	1/4" ODF	\$183.19
ECE-12-1/2-ZX200	168800P	8 to 12-1/2	5/8" ODF	1-1/8" ODF	1/4" ODF	\$183.19
ECE-15-ZX200	168803P	12-1/2 to 15	5/8" ODF	7/8" ODF	1/4" ODF	\$183.19
ECE-15-ZX200	168804P	12-1/2 to 15	5/8" ODF	1-1/8" ODF	1/4" ODF	\$183.19

### Parker Hannifin Corporation

Broadview, IL 60155

ph: (800) 742-2681 fax: (800) 241-2872

cicaftermarket@parker.com ■ www.parker.com/coolparts

## Valve Bodies for Model C(E), SC(E), and EC(E) Series Valves

Model	Part No.	Inlet	Outlet	Equalizer	Trade Price
C-AA 2X4 SAE BODY	040500-01	1/4" SAE	1/2" SAE		\$61.62
C-A 3X4 SAE BODY	040500-02	3/8" SAE	1/2" SAE		\$61.62
CE-AA 2X4 SAE BODY	040500-03	1/4" SAE	1/2" SAE	1/4" SAE	\$68.99
CE-A 3X4 SAE BODY	040500-04	3/8" SAE	1/2" SAE	1/4" SAE	\$68.99
CE-B 3X4 SAE BODY	040500-05	3/8" SAE	1/2" SAE	1/4" SAE	\$68.99
CE-C 3X4 SAE BODY	040500-06	3/8" SAE	1/2" SAE	1/4" SAE	\$68.99
SC-AA 3X4 ODF BODY	040501-01	3/8" ODF	1/2" ODF		\$90.79
SC-A 3X4 ODF BODY	040501-02	3/8" ODF	1/2" ODF		\$90.79
SCE-AA 3X4 ODF BODY	040501-03	3/8" ODF	1/2" ODF	1/4" SAE	\$98.18
SCE-A 3X4 ODF BODY	040501-04	3/8" ODF	1/2" ODF	1/4" SAE	\$98.18
SCE-B 3X4 ODF BODY	040501-05	3/8" ODF	1/2" ODF	1/4" SAE	\$98.18
SCE-C 3X4 ODF BODY	040501-06	3/8" ODF	1/2" ODF	1/4" SAE	\$98.18
EC-AA 3X4 ODF BODY	040502-01	3/8" ODF	1/2" ODF		\$71.38
EC-A 3X4 ODF BODY	040502-02	3/8" ODF	1/2" ODF		\$71.38
ECE-AA 3X4 ODF BODY	040502-03	3/8" ODF	1/2" ODF	1/4" SAE	\$77.91
ECE-A 3X4 ODF BODY	040502-04	3/8" ODF	1/2" ODF	1/4" SAE	\$77.91
ECE-B 4X5 ODF BODY	040502-05	1/2" ODF	5/8" ODF	1/4" SAE	\$77.91
ECE-C 4X7 ODF BODY	040502-06	1/2" ODF	7/8" ODF	1/4" SAE	\$77.91
ECE-D 5X7 ODF BODY	040502-07	5/8" ODF	7/8" ODF	1/4" SAE	\$77.91

## Power Elements for Model C(E), SC(E), and EC(E) Series Valves

Model	Part No.	Refrigerant	Cap. tube length	Evaporator Temp. Range	Trade Price
KT-46-JW	180377P	R12, R134A	60"	Used from -40 to +60 degrees F	\$48.80
KT-46-JX60	180384	R12, R134A	60"	Used from +10 to +60 degrees F	\$48.80
KT-46-VW	180401P	R22, R407C	60"	Used from -40 to +60 degrees F	\$48.80
KT-46-VX35	180418	R22, R407C	60"	Used from -40 to +10 degrees F	\$48.80
KT-46-VX100	180402P	R22, R407C	60"	Used from +10 to +60 degrees F	\$48.80
KT-46-SW	180397P	R502, R404A, R507	60"	Used from -40 to +60 degrees F	\$48.80
KT-46-SX35	180398P	R502, R404A, R507	60"	Used from -40 to +10 degrees F	\$48.80
KT-46-SZ	180399P	R502, R404A, R507	60"	Used from -40 to 0 degrees F	\$48.80
KT-46-ZX200	181222P	R410A	60"	Used from +10 to +60 degrees F	\$48.80

## Power Element for Model ECE-12-1/2 and ECE-15 Ton R410A VALVE

Model	Part No.	Refrigerant	Cap. tube length	Evaporator Temp. Range	Trade Price
KT-46-5-ZX200	181223P	R410A	60"	Used from +10 to +60 degrees F	\$48.80

## Parker CBench Accessories

Part No.	Description	Trade Price
805127	1" KT-46 Power Element Wrench	\$58.98
R410 Wrench	1-1/4" R410A Power Element Wrench	\$73.73
805126	.25 fl oz Oil Bottle	\$6.36
184005	Socket for Valve Bodies	\$122.53
908014	ECE 3/8 Inlet Strainer Screen	\$8.09
908012	ECE 1/2 Inlet Strainer Screen	\$8.45
908009	ECE 5/8 Inlet Strainer Screen	\$8.57
183015	CE 1/4 Inlet Strainer Screen	\$3.98
183017	CE 3/8 Inlet Strainer Screen	\$6.72
805125	SCE Inlet Strainer Screen (All)	\$11.28

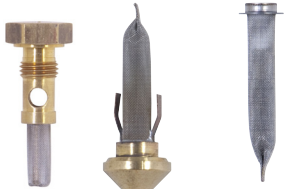
## Strainers

SCE

CE

ECE

805127 1" KT-46 Power Element Wrench





**EBS Series**

Parker EBS valve is a brass bar body valve. The Type EBS features a balanced port construction and extended ODF connections. The thermostatic element is replaceable. The balanced port construction makes this valve ideally suited for air conditioning applications which operate over widely varying conditions.

**Applications:**

- Air Conditioning and Refrigeration

**Key Features and Benefits:**

- Balanced port design
- Removable power element
- Field adjustable superheat

**Refrigerants R-12, R-134A**

Model	Part No.	Nom. Tons	Inlet	Outlet	Equalizer		Trade Price
EBSE-5-JW	163614P	5	5/8" ODF	7/8" ODF	1/4" ODF	5' CAP	\$286.26
EBSE-7-JW	163505P	7	5/8" ODF	7/8" ODF	1/4" ODF	5' CAP	\$286.26
EBSE-9-JW	164995P	9	7/8" ODF	1-1/8" ODF	1/4" ODF	5' CAP	\$316.32
EBSE-12-JW	164970P	12	7/8" ODF	1-1/8" ODF	1/4" ODF	5' CAP	\$316.32

**Refrigerants R22, R-407C**

Model	Part No.	Nom. Tons	Inlet	Outlet	Equalizer		Trade Price
EBSE-8-VX100	163557P	8	5/8" ODF	7/8" ODF	1/4" ODF	5' CAP	\$223.23
EBSE-11-VW	163518P	11	5/8" ODF	7/8" ODF	1/4" ODF	5' CAP	\$223.23
EBSE-11-VX100	163525P	11	5/8" ODF	7/8" ODF	1/4" ODF	5' CAP	\$223.23
EBSE-15-VW	163576P	15	7/8" ODF	1-1/8" ODF	1/4" ODF	5' CAP	\$247.05
EBSE-15-VX100	163628P	15	7/8" ODF	1-1/8" ODF	1/4" ODF	5' CAP	\$247.05
EBSE-20-VW	163612P	20	7/8" ODF	1-3/8" ODF	1/4" ODF	5' CAP	\$316.32
EBSE-20-VX100	163592P	20	7/8" ODF	1-3/8" ODF	1/4" ODF	5' CAP	\$316.32

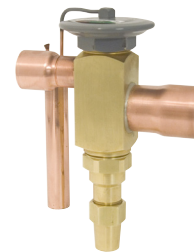
**Refrigerants R-402A, R-402B, R-404A, R-502, R-507**

Model	Part No.	Nom. Tons	Inlet	Outlet	Equalizer		Trade Price
EBSE-6-SW	163708P	6	5/8" ODF	7/8" ODF	1/4" ODF	5' CAP	\$268.26
EBSE-6-SZ	163587P	6	5/8" ODF	7/8" ODF	1/4" ODF	5' CAP	\$268.26
EBSE-6-SX35	163575P	6	5/8" ODF	7/8" ODF	1/4" ODF	5' CAP	\$268.26
EBSE-7-1/2-SW	163507P	7-1/2	5/8" ODF	7/8" ODF	1/4" ODF	5' CAP	\$268.26
EBSE-7-1/2-SZ	163508P	7-1/2	5/8" ODF	7/8" ODF	1/4" ODF	5' CAP	\$268.26
EBSE-7-1/2-SX35	163509P	7-1/2	5/8" ODF	7/8" ODF	1/4" ODF	5' CAP	\$268.26
EBSE-10-SW	163877P	10	7/8" ODF	1-1/8" ODF	1/4" ODF	5' CAP	\$316.32
EBSE-10-SZ	163874P	10	7/8" ODF	1-1/8" ODF	1/4" ODF	5' CAP	\$316.32
EBSE-10-SX35	163752P	10	7/8" ODF	1-1/8" ODF	1/4" ODF	5' CAP	\$316.32
EBSE-13-SW	163783P	13	7/8" ODF	1-3/8" ODF	1/4" ODF	5' CAP	\$316.32
EBSE-13-SZ	163797P	13	7/8" ODF	1-3/8" ODF	1/4" ODF	5' CAP	\$316.32
EBSE-13-SX35	163749P	13	7/8" ODF	1-3/8" ODF	1/4" ODF	5' CAP	\$316.32



## OE Series

The Parker OE series valve utilizes balanced port construction to provide optimum operation on medium to large tonnage air conditioning and refrigeration systems. Two brass body styles with copper ODF connections and a removable thermostatic power element provide the stability and control required in a variety of applications, especially where there are wide changes in load conditions. Body Style 1 has an R-22 nominal capacity up to 30 tons, while Body Style 2 extends the capacity range to 70 tons.

**Applications:**

- Air Conditioning
- Process Chillers

**Key Features and Benefits:**

- Balanced port design
- Removable power element
- Field adjustable superheat
- 1/4" sweat external equalizer
- Weight: Body Style 1 - 1.7 lbs. / .77 kg  
Body Style 2 - 2.5 lbs. / 1.13 kg
- 60" capillary tube (120" optional)

## Refrigerants R-12, R-134A

Model	Part No.	Nom. Tons	Inlet	Outlet	Equalizer		Trade Price
OE-16-JW	124209P	16	1-1/8" ODF	1-3/8" ODF	1/4" ODF	5' CAP	\$349.41
OE-23-JW	124859P	23	1-1/8" ODF	1-3/8" ODF	1/4" ODF	5' CAP	\$630.82
OE-32-JW	124701P	32	1-1/8" ODF	1-3/8" ODF	1/4" ODF	5' CAP	\$630.82
OE-40-JW	125528P	40	1-1/8" ODF	1-3/8" ODF	1/4" ODF	5' CAP	\$630.82

## Refrigerants R22, R-407C

Model	Part No.	Nom. Tons	Inlet	Outlet	Equalizer		Trade Price
OE-15-VX100	124296P	15	7/8" ODF	1-1/8" ODF	1/4" ODF	5' CAP	\$272.86
OE-15-VX100	124300P	15	7/8" ODF	1-3/8" ODF	1/4" ODF	5' CAP	\$349.41
OE-20-VX100	124303P	20	7/8" ODF	1-3/8" ODF	1/4" ODF	5" CAP	\$272.86
OE-30-VW	124380P	30	1-1/8" ODF	1-3/8" ODF	1/4" ODF	5' CAP	\$349.41
OE-30-VX100	124310P	30	1-1/8" ODF	1-3/8" ODF	1/4" ODF	5' CAP	\$272.86
OE-40-VW	124387P	40	1-1/8" ODF	1-3/8" ODF	1/4" ODF	5' CAP	\$492.66
OE-40-VX100	124317P	40	1-1/8" ODF	1-3/8" ODF	1/4" ODF	5' CAP	\$492.66
OE-55-VX100	124331P	55	1-1/8" ODF	1-3/8" ODF	1/4" ODF	5' CAP	\$492.66
OE-55-VX100	125370P	55	1-1/8" ODF	1-3/8" ODF	1/4" ODF	10' CAP	\$713.00
OE-55-VX100	125371P	55	1-1/8" ODF	1-3/8" ODF	1/4" ODF	20' CAP	\$713.00
OE-70-VX100	124345P	70	1-1/8" ODF	1-3/8" ODF	1/4" ODF	5' CAP	\$492.66

**OE Series Continued**  
**Refrigerant R-404A**

Model	Part No.	Nom. Tons	Inlet	Outlet	Equalizer		Trade Price
OE-21-SW	124215P	21	1-1/8" ODF	1-3/8" ODF	1/4" ODF	5' CAP	\$349.41
OE-21-SZ	124218P	21	1-1/8" ODF	1-3/8" ODF	1/4" ODF	5' CAP	\$349.41
OE-21-SX35	124231P	21	1-1/8" ODF	1-3/8" ODF	1/4" ODF	5' CAP	\$349.41
OE-30-SW	124819P	30	1-1/8" ODF	1-3/8" ODF	1/4" ODF	5' CAP	\$630.82
OE-30-SZ	124908P	30	1-1/8" ODF	1-3/8" ODF	1/4" ODF	5' CAP	\$630.82
OE-30-SX35	124750P	30	1-1/8" ODF	1-3/8" ODF	1/4" ODF	5' CAP	\$630.82
OE-35-SW	124156P	35	1-1/8" ODF	1-3/8" ODF	1/4" ODF	5' CAP	\$630.82
OE-35-SZ	124351P	35	1-1/8" ODF	1-3/8" ODF	1/4" ODF	5' CAP	\$630.82
OE-35-SX35	124145P	35	1-1/8" ODF	1-3/8" ODF	1/4" ODF	5' CAP	\$630.82
OE-45-SW	124127P	45	1-1/8" ODF	1-3/8" ODF	1/4" ODF	5' CAP	\$630.82
OE-45-SZ	125144P	45	1-1/8" ODF	1-3/8" ODF	1/4" ODF	5' CAP	\$630.82
OE-45-SX35	124153P	45	1-1/8" ODF	1-3/8" ODF	1/4" ODF	5' CAP	\$630.82

**OE Series**  
**Refrigerant R-410A**

Model	Part No.	Nom. Tons	Inlet	Outlet	Equalizer		Trade Price
OE-20-ZX200	125694P	20	7/8" ODF	1-3/8" ODF	1/4" ODF	5' CAP	\$387.92
OE-25-ZX200	125696P	25	7/8" ODF	1-3/8" ODF	1/4" ODF	5' CAP	\$387.92
OE-35-ZX200	125698P	35	1-1/8" ODF	1-3/8" ODF	1/4" ODF	5' CAP	\$387.92
OE-50-ZX200	125706P	50	1-1/8" ODF	1-3/8" ODF	1/4" ODF	5' CAP	\$669.34
OE-60-ZX200	125708P	60	1-1/8" ODF	1-3/8" ODF	1/4" ODF	5' CAP	\$669.34

## Power Elements for EBS Series 8 thru 20 ton and O Series 15, 20, and 30 Ton Valves

Model	Part No.	Refrigerant	Cap. Tube	Temp. Range	Trade Price
KT-83-FW/JW	180941P	R12, R134A	5'	Used from +10 to +60 degrees F	\$76.78
KT-83-VW	180887P	R22, R407C	5'	Used from +10 to +60 degrees F	\$76.78
KT-83-VX100	180891P	R22, R407C	5'	Used from +10 to +60 degrees F	\$76.78
KT-83-VX100	181037P	R22, R407C	10'	Used from +10 to +60 degrees F	\$157.56
KT-85-ZX200	179901P	R410A	5'	Used from +10 to +60 degrees F	\$76.78
KT-83-SW	181030P	R404A	5'	Used from +10 to +60 degrees F	\$76.78
KT-83-SZ	180062P	R404A	5'	Used from -40 to 0 degrees F	\$76.78
KT-83-SX35	180064P	R404A	5'	Used from -40 to 0 degrees F	\$76.78

## Power Elements for Model O Series 40 and 70 Tons

Model	Part No.	Refrigerant	Cap. Tube	Temp. Range	Trade Price
KT-33-VW	180025P	R22, R407C	5'	Used from +10 to +60 degrees F	\$90.04
KT-33-VX100	180029P	R22, R407C	5'	Used from +10 to +60 degrees F	\$90.04
KT-33-VX100	180137P	R22, R407C	10'	Used from +10 to +60 degrees F	\$170.82
KT-33-SW	180086P	R404A	5'	Used from +10 to +60 degrees F	\$90.04
KT-33-SZ	180088P	R404A	5'	Used from -40 to 0 degrees F	\$90.04
KT-33-SX35	180102P	R404A	5'	Used from -40 to 0 degrees F	\$90.04
KT-85-3-ZX200	179904P	R410A	5'	Used from +10 to +60 degrees F	\$88.28



## Auxiliary Side Connectors

Model	Part No.	Inlet ODM	Outlet ODF	Side Connect ODF	Trade Price
ASC-4-4	206831P	1/2"	1/2"	1/2"	\$70.78
ASC-5-4	206832P	5/8"	5/8"	1/2"	\$75.84
ASC-7-4	206835P	7/8"	7/8"	1/2"	\$104.47
ASC-9-5	206841P	1-1/8"	1-1/8"	5/8"	\$106.45
ASC-11-7	206847P	1-3/8"	1-3/8"	7/8"	\$140.16

**Constant Pressure Valves**

**Applications:**

- Ice cream machines
- Slush machines
- Hot gas bypass
- Freeze protection
- Refrigerant reclaim
- Vending machines
- Ice machines

Model	Part No.	Bleed	Inlet	Outlet	Trade Price
AS	040193-01		1/4" ODF	3/8" ODF	\$80.19
ASB20	040193-05	20%	1/4" ODF	3/8" ODF	\$84.74
A-1	040054-01		1/4" SAE	1/4" FPT	\$80.19
A-2	040085-01		1/4" SAE	1/2" SAE	\$80.19
A-3	040129-01		3/8" SAE	1/2" SAE	\$80.19
A-4	040143-01		1/4" SAE	1/2" SAE	\$80.19
A7-AA	040305-03		1/4" ODF	3/8" ODF	\$96.93
A7-A	040305-15		3/8" SAE	1/2" SAE	\$96.93
A7-A	040305-05		3/8" ODF	3/8" ODF	\$96.93
A7-B	040305-04		3/8" ODF	3/8" ODF	\$96.93
A7-B	040305-06		3/8" SAE	3/8" SAE	\$96.93
A7-C	040305-07		3/8" SAE	3/8" SAE	\$96.93
A7-C	040305-01		3/8" ODF	3/8" ODF	\$96.93
A7-D	040305-12		3/8" ODF	3/8" ODF	\$96.93
A7-E	040305-11		3/8" ODF	3/8" ODF	\$96.93

**Model A7**



**Not Rated for use with R410A**

**UL recognized for maximum operating pressure 500 PSI, 400 PSI low side**

**R Series Refrigeration Solenoid Valves**

The Parker Refrigeration Valves consist of solenoid valves for liquid, suction and hot gas defrost application requirements. The valves are compatible with virtually all of today's commercially available CFC, HCFC and HFC refrigerants and blends. The Parker refrigeration valves meet a broad range of system needs including refrigeration, air conditioning and freezing applications. From small fractional tonnage to large systems.

The portfolio is endowed with numerous benefits including:

- Normally closed and normally open valves
- State of the art operator performance for long life, ease of service and tighter system integrity
- High pressure ratings to comply with R410A
- Extended end sweat connections enable brazing installation without disassembly
- AC & DC coils are interchangeable on all valve body versions



R52

**“R” Series Normally Closed Refrigeration Solenoid Valves**

Valve Model	Part Number	Connection	Port Size	R410A	R22	R404	Coil Type	Trade Price
R12E22	4260-00	1/4" ODF	.075	.98	.80	.53	PKC-1	\$68.73
R16F32	4261-00	1/4" SAE	.101	XXX	1.6	1.1	PKC-1	\$70.82
R16E32	4262-00	1/4" ODF	.101	XXX	1.6	1.1	PKC-1	\$68.73
R16E33	4263-00	3/8" ODF	.101	XXX	1.6	1.1	PKC-1	\$68.73
R22E52	4264-00	1/4" ODF	.150	3.45	2.8	1.9	PKC-1	\$68.73
R22E53	4265-00	3/8" ODF	.150	3.45	2.8	1.9	PKC-1	\$68.73
R26E63M	4266-00	3/8" ODF	3/16"	6.02	4.9	3.3	PKC-1	\$108.43
R26E64M	4267-00	1/2" ODF	3/16"	6.02	4.9	3.3	PKC-1	\$108.43
R26F63	4268-00	3/8" SAE	3/16"	XXX	4.9	3.3	PKC-1	\$84.00
R32E93M	4269-00	3/8" ODF	9/32"	9.86	8.1	5.4	PKC-2	\$134.05
R32E94M	4270-00	1/2" ODF	9/32"	9.86	8.1	5.4	PKC-2	\$134.05
R36E104M	4271-00	1/2" ODF	5/16"	13.6	11.1	7.3	PKC-2	\$152.57
R36E105M	4272-00	5/8" ODF	5/16"	13.6	11.1	7.3	PKC-2	\$152.57
R38E145M	4273-00	5/8" ODF	7/16"	19.2	15.8	10.4	PKC-2	\$163.37
R38E147M	4274-00	7/8" ODF	7/16"	19.2	15.8	10.4	PKC-2	\$171.21
R42E195M	4180-00	5/8" ODF	19/32"	29.7	24.2	16	PKC-2	\$280.40
R42E197M	4181-00	7/8" ODF	19/32"	29.7	24.2	16	PKC-2	\$280.40
R42E199M	4182-00	1-1/8" ODF	19/32"	29.7	24.2	16	PKC-2	\$280.40
R46E257M	4183-00	7/8" ODF	25/32"	50.6	41.4	27.4	PKC-2	\$295.96
R46E259M	4184-00	1-1/8" ODF	25/32"	50.6	41.4	27.4	PKC-2	\$295.96
R52E359M	4185-00	1-1/8" ODF	1-3/32"	88.2	57.6	46.5	PKC-1	\$433.97
R52E3511M	4186-00	1-3/8" ODF	1-3/32"	88.2	57.6	46.5	PKC-1	\$460.83
R56E4213M	4187-00	1-5/8" ODF	1-5/16"	156	98.2	65.8	PKC-2	\$722.89
R56E4217M	4188-00	2-1/8" ODF	1-5/16"	156	98.2	65.8	PKC-2	\$722.89

## "R" Series Repair Kits for Normally Closed Refrigeration Solenoid Valves

Model Number	Part Number	Application	Trade Price
RK2601	381111P	R26 Series Valves	\$79.63
RK3201	380819P	R32 Series Valves	\$88.12
RK3601	381005P	R36 Series Valves	\$92.14
RK3801	380818P	R38 Series Valves	\$102.14
RK4201	380817P	R42 Series Valves	\$137.00
RK4601	381128P	R46 Series Valves	\$196.25
RK5201	958741P	R52 Series Valves	\$345.63
RK5601	958742P	R56 Series Valves	\$533.46

## PKC Series Solenoid Coils for Normally Closed Valves

Model	Part No.	Watts	Volts	Hz	Trade Price
PKC-1-24	310325P	10	24 AC	50/60	\$50.51
PKC-1-120	310000P	10	120 AC	50/60	\$50.51
PKC-1-120/240	310286P	10	120/240 AC	50/60	\$65.67
PKC-1-208/240	310156P	10	208/240 AC	50/60	\$50.51
PKC-1-24DC	310468P		24 DC		\$80.60
PKC-2-24	311710P	15	24 AC	50/60	\$60.62
PKC-2-120	311424P	15	120 AC	50/60	\$60.62
PKC-2-120/240	311671P	15	120/240 AC	50/60	\$78.80
PKC-2-208/240	311515P	15	208/240 AC	50/60	\$60.62
PKC-2-24DC	311931P	18	24 DC		\$96.72

PKC-1



PKC-2



## Trade Price Schedule

### "R" Series Normally Open Refrigeration Solenoid Valves

Valve Model	Part Number	Connection	Port Size	R410A	R22	R404	Coil Type	Trade Price
R27E63	4275-00	3/8" ODF	3/16"	6.02	4.9	3.3	OPKC-1	\$169.10
R27E64	4276-00	1/2" ODF	3/16"	6.02	4.9	3.3	OPKC-1	\$169.10
R33E93	4277-00	3/8" ODF	9/32"	9.86	8.1	5.4	OPKC-2	\$181.89
R33E94	4279-00	1/2" ODF	9/32"	9.86	8.1	5.4	OPKC-2	\$181.89
R37E104	4280-00	1/2" ODF	5/16"	13.6	11.1	7.3	OPKC-2	\$205.58
R37E105	4281-00	5/8" ODF	5/16"	13.6	11.1	7.3	OPKC-2	\$205.58
R39E145	4282-00	5/8" ODF	7/16"	19.2	15.8	10.4	OPKC-2	\$223.79
R39E147	4283-00	7/8" ODF	7/16"	19.2	15.8	10.4	OPKC-2	\$223.79
R43E195	4189-00	5/8" ODF	19/32"	29.7	24.2	16	OPKC-2	\$299.66
R43E197	4190-00	7/8" ODF	19/32"	29.7	24.2	16	OPKC-2	\$299.66
R43E199	4191-00	1-1/8" ODF	19/32"	29.7	24.2	16	OPKC-2	\$299.66
R47E257	4192-00	7/8" ODF	25/32"	50.6	41.4	27.4	OPKC-2	\$405.75
R47E259	4193-00	1-1/8" ODF	25/32"	50.6	41.4	27.4	OPKC-2	\$405.75
R53E359	4194-00	1-1/8" ODF	1-3/32"	88.2	57.6	46.5	OPKC-1	\$569.79
R53E3511	4195-00	1-3/8" ODF	1-3/32"	88.2	57.6	46.5	OPKC-1	\$595.43
R57E4213	4196-00	1-5/8" ODF	1-5/16"	156	98.2	65.8	OPKC-2	\$923.64
R57E4217	4197-00	2-1/8" ODF	1-5/16"	156	98.2	65.8	OPKC-2	\$951.79

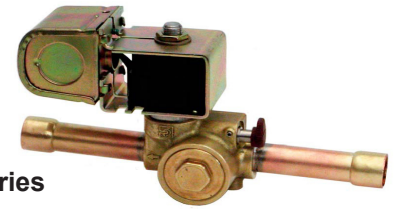
### OPKC Series Solenoid Coils for Normally Open Valves

Model	Part No.	Volts	Hz	Trade Price
OPKC-1-120	311100P	120 AC	50/60	\$51.51
OPKC-1-120/240	311105P	120/240	50/60	\$69.86
OPKC-1-208/240	311103P	208/240 AC	50/60	\$51.51
OPKC-2-120	312783P	120AC	50/60	\$61.83
OPKC-2-208/240	312822P	208/240 AC	50/60	\$61.83



## Trade Price Schedule

### R10 thru R30 Series Normally Closed Refrigeration Solenoid Valves without Manual Operator



R30 Series

Valve Model	Part Number	Connection	Port Size	R410A	R22	R404	Coil Type	Trade Price
R10E22	R10E22	1/4" ODF	5/64"	.87	.73	.49	RK1	\$68.77
R10E23	R10E23	3/8" ODF	5/64"	.87	.73	.49	RK1	\$68.77
R10E32	R10E32	1/4" ODF	3/32"	1.4	1.18	.79	RK1	\$68.77
R10F32	R10F32	1/4" SAE	3/32"	1.4	1.18	.79	RK1	\$61.92
R10E33	R10E33	3/8" ODF	3/32"	1.4	1.18	.79	RK1	\$68.77
R20E42	R20E42	1/4" ODF	1/8"	2.56	2.09	1.41	RK1	\$86.77
R20E43	R20E43	3/8" ODF	1/8"	2.56	2.09	1.41	RK1	\$90.96
R20F43	R20F43	3/8" ODF	1/8"	2.56	2.09	1.41	RK1	\$90.96
R20E62	R20E62	1/4" ODF	3/16"	4.53	3.8	2.56	RK1	\$88.69
R20F62	R20F62	1/4" SAE	3/16"	4.53	3.8	2.56	RK1	\$90.20
R20E63	R20E63	3/8" ODF	3/16"	4.53	3.8	2.56	RK1	\$90.20
R20E83	R20E83	3/8" ODF	1/4"	6.61	5.53	3.73	RK1	\$104.40
R20F83	R20F83	3/8" SAE	1/4"	6.61	5.53	3.73	RK1	\$104.40
R20E84	R20E84	1/2" ODF	1/4"	6.61	5.53	3.73	RK1	\$104.40
R30E103	R30E103	3/8" ODF	5/16"	10.1	8.42	5.67	RK1	\$156.49
R30E104	R30E104	1/2" ODF	5/16"	10.1	8.42	5.67	RK1	\$148.47
R30E105	R30E105	5/8" ODF	5/16"	10.1	8.42	5.67	RK1	\$150.16
R30E124	R30E124	1/2" ODF	3/8"	12.9	10.8	7.27	RK1	\$141.38
R30E125	R30E125	5/8" ODF	3/8"	12.9	10.8	7.27	RK1	\$143.02
R30E154	R30E154	1/2" ODF	15/32"	19.3	16.2	10.9	RK1	\$176.02
R30E155	R30E155	5/8" ODF	15/32"	19.3	16.2	10.9	RK1	\$176.02
R30E157	R30E157	7/8" ODF	15/32"	19.3	16.2	10.9	RK1	\$180.10

## Trade Price Schedule

### R10 thru R30 Series Normally Closed Refrigeration Solenoid Valves WITH manual operator

Valve Model	Part Number	Connection	Port Size	R410A	R22	R404	Coil Type	Trade Price
R10E22M	R10E22M	1/4" ODF	5/64"	.87	.73	.49	RK1	\$86.13
R10E23M	R10E23M	3/8" ODF	5/64"	.87	.73	.49	RK1	\$86.13
R10E32M	R10E32M	1/4" ODF	3/32"	1.4	1.18	.79	RK1	\$89.99
R10E33M	R10E33M	3/8" ODF	3/32"	1.4	1.18	.79	RK1	\$89.99
R20E42M	R20E42M	1/4" ODF	1/8"	2.56	2.09	1.41	RK1	\$110.49
R20E43M	R20E43M	3/8" ODF	1/8"	2.56	2.09	1.41	RK1	\$118.22
R20E62M	R20E62M	1/4" ODF	3/16"	4.53	3.8	2.56	RK1	\$116.24
R20E63M	R20E63M	3/8" ODF	3/16"	4.53	3.8	2.56	RK1	\$118.22
R20E83M	R20E83M	3/8" ODF	1/4"	6.61	5.53	3.73	RK1	\$124.98
R20E84M	R20E84M	1/2" ODF	1/4"	6.61	5.53	3.73	RK1	\$124.98
R30E103M	R30E103M	3/8" ODF	5/16"	10.1	8.42	5.67	RK1	\$182.39
R30E104M	R30E104M	1/2" ODF	5/16"	10.1	8.42	5.67	RK1	\$176.05
R30E105M	R30E105M	5/8" ODF	5/16"	10.1	8.42	5.67	RK1	\$176.05
R30E124M	R30E124M	1/2" ODF	3/8"	12.9	10.8	7.27	RK1	\$178.45
R30E125M	R30E125M	5/8" ODF	3/8"	12.9	10.8	7.27	RK1	\$170.42
R30E154M	R30E154M	1/2" ODF	15/32"	19.3	16.2	10.9	RK1	\$183.45
R30E155M	R30E155M	5/8" ODF	15/32"	19.3	16.2	10.9	RK1	\$185.10
R30E157M	R30E157M	7/8" ODF	15/32"	19.3	16.2	10.9	RK1	\$189.33

### R15 thru R35 Series Normally Open Refrigeration Solenoid Valves

Valve Model	Part Number	Connection	Port Size	R410A	R22	R404	Coil Type	Trade Price
R15E22	R15E22	1/4" ODF	5/64"	.87	.73	.49	RK3	\$114.11
R15E23	R15E23	3/8" ODF	5/64"	.87	.73	.49	RK3	\$109.81
R15E32	R15E32	1/4" ODF	3/32"	1.4	1.18	.79	RK3	\$111.85
R15E33	R15E33	3/8" ODF	3/32"	1.4	1.18	.79	RK3	\$112.16
R25E84	R25E84	1/2" ODF	1/4"	6.61	5.53	3.73	RK3	\$219.29
R35E103	R35E103	3/8" ODF	5/16"	10.1	8.42	5.67	RK3	\$208.09
R35E104	R35E104	1/2" ODF	5/16"	10.1	8.42	5.67	RK3	\$209.01
R35E105	R35E105	5/8" ODF	5/16"	10.1	8.42	5.67	RK3	\$204.19
R35E124	R35E124	1/2" ODF	3/8"	12.9	10.8	7.27	RK3	\$205.84
R35E125	R35E125	5/8" ODF	3/8"	12.9	10.8	7.27	RK3	\$237.18
R35E154	R35E154	1/2" ODF	15/32"	19.3	16.1	10.9	RK3	\$238.83
R35E155	R35E155	5/8" ODF	15/32"	19.3	16.1	10.9	RK3	\$212.93
R35E157	R35E157	7/8" ODF	15/32"	19.3	16.1	10.9	RK3	\$189.33

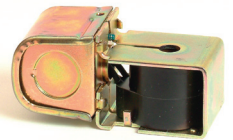
## Repair Kits and Coils for older R10 - R50 Series Solenoid Valves

## Repair Kits for R10 - R50 Normally Closed Valves

Valve Series	Rebuild Kit	Trade Price
R10	RK1001	\$40.55
R20	RK2001	\$58.82
R30	RK3001	\$75.65
R40	RK4001	\$151.30
R50	RK5001	\$221.81

## Repair Kits for R15 -R55 Normally Open Valves

Valve Series	Rebuild Kit	Trade Price
R15	RK1501	\$52.29
R25	RK2501	\$78.40
R35	RK3501	\$100.23
R45	RK4501	\$181.19
R55	RK5501	\$240.15



Part No.	Enclosure	Class	Watts	Voltages	Trade Price
RK1B2	Junction Box – 6" leads	Class F	10W	24/60	\$48.41
RK1P3	Junction Box – 6" leads	Class F	10W	120/60, 110/50	\$48.41
RK12K	Junction Box – 6" leads	Class F	10W	208/60	\$48.41
RK1Q3	Junction Box – 6" leads	Class F	10W	240/60, 220/50	\$48.41
RK1C1	Junction Box – 6" leads	Class F	10W	12VDC	\$53.25
RK1C2	Junction Box – 6" leads	Class F	10W	24VDC	\$48.41
RK1U3	Junction Box – 6" leads	Class F	10W	208/240/60	\$48.41

Part No.	Enclosure	Class	Watts	Voltages	Trade Price
RK3B2	Junction Box – 6" leads	Class H	22W	24/60	\$54.15
RK3P3	Junction Box – 6" leads	Class H	22W	120/60, 110/50	\$54.15
RK32K	Junction Box – 6" leads	Class H	22W	208/60	\$54.15
RK3Q3	Junction Box – 6" leads	Class H	22W	240/60, 220/50	\$75.35
RK3C2	Junction Box – 6" leads	Class H	22W	24VDC	\$54.15

## Coils for Normally Closed RB Refrigeration Valves

Model	Part No.	Watts	Volts	Hz	VA Holding	VA Inrush	Trade Price
R-23MM- 24	75690	11	24 AC	50/60	15	36	\$48.09
R-23MM 120	75740	11	120 AC	50/60	15	36	\$48.09
R-23MM-208	75730	11	208 AC	60	15	36	\$51.14
R-23MM 240	75750	11	240 AC	50/60	15	36	\$48.09
R-23MM 480	75760	11	480 AC	50/60	15	36	\$48.09
R-23MM 120/240	75370	11	120/240 AC	50/60	15	36	\$61.55
R23MM 240Spade	75758	11	240 AC	50/60	15	36	\$85.27
R-23MM 12V DC	75780	16	12 DC	N/A	1.33	N/A	\$88.82
R-23MM 24V DC	75790	16	24 DC	N/A	0.67	N/A	\$67.21

## Coils for Normally Open RB Refrigeration Valves

Model	Part No.	Watts	Volts	Hz	VA Holding	VA Inrush	Trade Price
OR23-24	74690	11	24 AC	50/60	15	36	\$48.09
OR23-120	74740	11	120 AC	50/60	15	36	\$48.09
OR23-240	74750	11	240 AC	50/60	15	36	\$48.09
OR23-480	74760	11	480 AC	50/60	15	36	\$48.09
OR23-120/240	74370	11	120/240 AC	50/60	15	36	\$61.55
OR23-240 Spade	74758	11	240 AC	50/60	15	36	\$85.27
OR23-12V DC	74780	16	12 DC		15	36	\$67.21
OR23-24V DC	74790	16	24 DC	N/A	1.33	N/A	\$67.21

## RB/ORB Series Refrigeration Valve Repair Kits

Model	Part No.	Trade Price
ORB/RB1	76745	\$28.53
ORB/RB3	76747	\$43.59
ORB/RB5	76748	\$44.50
ORB/RB6	76846	\$49.29
ORB/RB9	76750	\$51.98
ORB/RB15	76753	\$57.38
ORB/RB21	76754	\$66.56
ORB/RB41	76757	\$78.44
RS903	76847	\$73.00
RS920	76859	\$51.78

**General Purpose Solenoid Valves Normally Closed Only**



Model	Part No.	Port Size	Cv	Connections	Air, Water, Oil	Steam	Max. Temp	Trade Price
GP200	70221	5/16"	.98	1/4" FPT	1-150 PSI	X	225	\$69.30
GP207	70222	5/16"	.98	1/4" FPT	1-150 PSI	1-10 PSI	240	\$78.80
GP257	70223	5/16"	.98	1/4" FPT	X	1-50 PSI	300	\$86.70
GP300	70392	1/2"	3.35	3/8" FPT	1-150 PSI	X	225	\$106.16
GP307	70393	1/2"	3.35	3/8" FPT	1-150 PSI	1-10 PSI	240	\$135.17
GP327	70404	1/2"	3.35	3/8" FPT	X	1-10 PSI	240	\$135.17
GP357	70394	1/2"	3.35	3/8" FPT	X	1-50 PSI	300	\$147.34
GP4	70561	1/2"	3.35	1/2" FPT	1-150 PSI	X	225	\$112.38
GP400	70562	1/2"	3.35	1/2" FPT	1-150 PSI	X	225	\$112.38
GP407	70563	1/2"	3.35	1/2" FPT	1-150 PSI	1-10 PSI	240	\$138.07
GP427	70586	1/2"	3.35	1/2" FPT	X	1-10 PSI	240	\$138.07
GP457	70564	1/2"	3.35	1/2" FPT	X	1-50 PSI	300	\$150.86
GP600	70712	3/4"	7.40	3/4" FPT	1-150 PSI	X	225	\$160.24
GP607	70713	3/4"	7.40	3/4" FPT	1-150 PSI	1-10 PSI	240	\$196.89
GP627	70742	3/4"	7.40	3/4" FPT	X	1-10 PSI	240	\$196.89
GP657	70714	3/4"	7.40	3/4" FPT	X	1-50 PSI	300	\$207.89
GP10A	70810	1"	12.20	1" FPT	1-150 PSI	X	225	\$268.58
GP1007	70808	1"	12.20	1" FPT	1-150 PSI	1-10 PSI	240	\$268.58
GP1057	70777	1"	12.20	1" FPT	X	1-50 PSI	300	\$271.73



**Solenoid Coils for General Purpose Valves**

Model	Part No.	Watts	Volts	Hz	VA Holding	VA Inrush	Trade Price
G23-24V	77300	9	24 VAC	50/60	12	30	\$45.89
G23-120	77310	9	120 VAC	50/60	12	30	\$45.89
G23-120 Boss	77311	9	120 VAC	50/60	12	30	\$45.89
G23-240	77320	9	208/240 VAC	50/60	12	30	\$45.89
G23-480	77340	9	480 VAC	50/60	12	30	\$45.89
G23-120/240	77360	9	120/240 VAC	50/60	12	30	\$45.89
G23-12V DC	75520	14	12 VDC	50/60	12		\$52.36
G23-24V DC	75530	14	24 VDC	50/60	12		\$52.36

**Repair Kits for General Purpose Valves**

Model	Part No.	Trade Price
GP200-R	76723	\$47.64
GP207-R	76724	\$50.14
GP257-R	76725	\$62.36
GP3R/GP4R	76726	\$54.74
GP300-R/GP400-R	76727	\$50.14
GP404-R	76800	\$46.26
GP307-R/GP407-R	76728	\$54.74
GP327-R/GP427-R	76852	\$54.74
GP357-R/GP457-R	76729	\$63.54
GP600-R	76731	\$65.69
GP607-R	76732	\$70.66
GP627-R	76853	\$69.96
GP657-R	76733	\$79.09
GP10A-R	76762	\$74.84
GP1007-R	76799	\$79.55
GP1057-R	76738	\$105.08

**General Purpose Bonnet Kit**

Model	Part No.	Trade Price
ALL GP3, GP3XX	76866	\$54.74
ALL GP4, GP4XX	76866	\$54.74
ALL GP6, GP6XX	76879	\$69.96
ALL GP10XX	76880	\$98.91

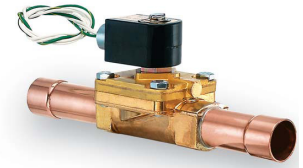
**Other J/E Coils  
Normally Closed Coils**

Model	Part No.	Trade Price
3MP/120	75050	\$132.69
3MP/240	75070	\$140.07
J4-240	75430	\$140.80

**Secondary Coolant Valves**

**Normally Closed**

Model	Part Number	Port Size	Cv	Connections	Trade Price
10E23C2-R1021E	10E23C2-R1021E	5/8"	4	5/8" ODF	\$206.70
14E23C2-R1021E	14E23C2-R1021E	3/4"	5	7/8" ODF	\$206.70
18E23C2-R1021E	18E23C2-R1021E	3/4"	5	1 1/8" ODF	\$206.70
22EH5C2-R1021E	22EH5C2-R1021E	1"	12.2	1 3/8" ODF	\$462.92
26EH5C2-R1021E	26EH5C2-R1021E	1"	12.2	1 5/8" ODF	\$462.92
34E24C2-R1021E	34E24C2-R1021E	1-1/2"	22.5	2 1/8" ODF	\$649.07



**Normally Open**

Model	Part Number	Port Size	Cv	Connections	Trade Price
10E23O2-R1021E	10E23O2-R1021E	5/8"	4	5/8 ODF	\$314.49
14E23O2-R1021E	14E23O2-R1021E	3/4"	5	7/8 ODF	\$314.49
18E23O2-R1021E	18E23O2-R1021E	3/4"	5	1 1/8 ODF	\$314.49
22E25O2-R1021E	22E25O2-R1021E	1"	12.2	1 3/8 ODF	\$584.73
26E25O2-R1021E	26E25O2-R1021E	1"	12.2	1 5/8 ODF	\$584.73
34E24O2-R1021E	34E24O2-R1021E	1-1/2"	22.5	2 1/8 ODF	\$819.48

**AF Series Coils for 34E24C2-R1021E Normally Closed Only**

Model	Part Number	Voltage	Enclosure	Leads	Trade Price
AF4C01-R1021	AF4C01-R1021	24VAC	NEMA4	18"	\$243.30
AF4C05-R1021	AF4C05-R1021	120VAC	NEMA 4	18"	\$243.30
AF4C10-R1021	AF4C10-R1021	208VAC	NEMA 4	18"	\$243.30
AF4C15-R1021	AF4C15-R1021	240VAC	NEMA4	18"	\$243.30

**CF Series coils for 10E,14E,18E,22E,26E Normally Open and Normally Closed Valves and 34E Normally Open Valves**

Model	Part Number	Voltage	Enclosure	Leads	Trade Price
CF5C01-R1021	CF5C01-R1021	24VAC	NEMA 4	18"	\$113.62
CF5C05-R1021	CF5C05-R1021	120VAC	NEMA 4	18"	\$113.62
CF5C10-R1021	CF5C10-R1021	208VAC	NEMA 4	18"	\$113.62
CF5C15-R1021	CF5C15-R1021	240VAC	NEMA 4	18"	\$113.62

**Glycol Valve Repair Kits**

**Normally Closed Valves**

Model	Trade Price
10E23C2-R1021ER	\$73.28
14E23C2-R1021ER	\$73.28
18E23C2-R1021ER	\$73.28
22EH5C2-R1021ER	\$171.40
26EH5C2-R1021ER	\$171.40
34E24C2-R1021ER	\$248.00

**Normally Open Valves**

Model	Trade Price
10E23O2-R1021ER	\$89.59
14E23O2-R1021ER	\$89.59
18E23O2-R1021ER	\$89.59
22E25O2-R1021ER	\$175.80
26E25O2-R1021ER	\$175.80
34E24O2-R1021ER	\$181.20



## Gold Ring Valves

## Two Way, Brass Body, General Purpose, Direct Acting, Normally Open

Model / Part No.	Connection FPT Size	Cv	Port Size	Pressure Min.	Max.	Fluid Temp.	Trade Price
04F2001106ACF	1/4"	.17	3/32"	0	300	180	\$126.75
04F2001108ACF	1/4"	.35	1/8"	0	130	180	\$126.75
04F2002118ACF	1/4"	.96	9/32"	0	30	180	\$131.88

## Two Way, Brass Body, Steam and Hot Water, Pilot Operated, Normally Closed

Model / Part No.	Connection FPT Size	Cv	Port Size	Steam PSI	Hot Water PSI	Fluid Temp.	Trade Price
06FS3C2340ACF	3/8"	3.00	5/8"	0-50	0-150	300	\$191.42
06FS5C2432ACH	3/8"	3.00	1/2"	1-125	Not Rated	353	\$258.63
08FS3C2340ACF	1/2"	4.00	5/8"	0-50	0-150	300	\$209.99
08FS5C2432ACH	1/2"	3.60	1/2"	1-125	Not Rated	353	\$280.41
12FS3C2348ACF	3/4"	5.00	3/4"	0-50	0-150	300	\$247.13
16FS5C2364ACF	1"	12.20	1"	1-50	1-150	300	\$632.32
16FS5C2464ACH	1"	12.20	1"	1-125	Not Rated	353	\$779.75
20FS4C2372AAF	1-1/4"	15.00	1-1/8"	5-50	5-150	300	\$651.26
24FS4C2380AAF	1-1/2"	22.50	1-1/2"	5-50	5-150	300	\$829.04

## Two Way, Brass Body, General Purpose, Pilot Operated, Normally Closed

Model / Part No.	Connection FPT Size	Cv	Port Size	Pressure Min.	Max.	Fluid Temp.	Trade Price
04F25C2122CAF	1/4"	1.20	11/32"	5	300	180	\$115.22
06F23C2140ACF	3/8"	3.00	5/8"	0	150	180	\$181.81
08F22C2140AAF	1/2"	4.00	5/8"	5	200	180	\$158.77
08F22C2140ADF	1/2"	4.00	5/8"	5	300	175	\$206.17
08F23C2140ACF	1/2"	4.00	5/8"	0	150	180	\$181.81
12F22C2148AAF	3/4"	5.00	3/4"	5	200	180	\$209.99
16FH5C2164ADF	1"	12.2	1"	0	150	174	\$588.35
20F24C2172AAF	1-1/4"	15.00	1-1/8"	5	150	180	\$495.52
24F24C2180AAF	1-1/2"	22.50	1-1/4"	5	150	180	\$795.11

## Two Way, Stainless Steel Body, General Purpose, Pilot Operated, Normally Closed

Model / Part No.	Connection FPT Size	Cv	Port Size	Pressure Min.	Max.	Fluid Temp.	Trade Price
06F23C6140ACF	3/8"	3.00	5/8"	0	150	180	\$501.91
08F23C6140ACF	1/2"	4.00	5/8"	0	150	180	\$969.25
12F23C6148ACF	3/4"	5.00	3/4"	0	150	180	\$994.85



## Two Way, Brass Body, General Purpose, Pilot Operated, Normally Open

Connection FPT Size	Model / Part No.	Cv	Port Size	Pressure Min.	Max.	Max. Temp.	Trade Price
3/8"	06F23O2140ACF	3.00	5/8"	0	150	180	\$384.10
1/2"	08F23O2140ACF	4.00	5/8"	0	150	180	\$384.10
3/4"	12F23O2148ACF	5.50	3/4"	0	150	180	\$409.75
1"	16F24O2164ACF	13.00	1"	5	125	180	\$613.31
1-1/2"	24F24O2180ACF	22.50	1-1/4"	5	125	180	\$1038.39

## Two Way, Stainless Steel Body, General Purpose, Pilot Operated, Normally Open

Model / Part No.	Connection FPT Size	Cv	Port Size	Pressure Min.	Max.	Fluid Temp.	Trade Price
12F23O6148ACF	3/4"	5.00	3/4"	0	150	180	\$1690.13

## Two Way, Brass Body, General Purpose, Pilot Operated, Normally Closed, DC Voltage

Model / Part No.	Connection FPT Size	Cv	Port Size	Pressure Min.	Max.	Fluid Temp.	Trade Price
04F25C2122C3F	1/4"	1.20	11/32"	5	275	150	\$115.22
12F22C2148A3F	3/4"	5.00	3/4"	0	40	150	\$257.34
16F24C2164A3F	1"	13.00	1"	5	125	150	\$395.63
20F24C2172A3F	1-1/4"	15.00	1-1/8"	5	125	150	\$495.52

## Two Way, Brass Body, General Purpose, Pilot Operated, Normally Open, DC Voltage

Model / Part No.	Connection FPT Size	Cv	Port Size	Pressure Min.	Max.	Fluid Temp.	Trade Price
08F23O2140A3F	1/2"	4.00	5/8"	0	125	150	\$384.09

## Four Way, Brass Body, General Purpose

Model / Part No.	Connection FPT Size	Cv	Port Size	Pressure Min.	Max.	Fluid Temp.	Trade Price
04F48S2106ACF	1/4"	.09	1/16"	10	150	180	\$468.63

## Four Way, Brass Body, General Purpose, DC Voltage

Model / Part No.	Connection FPT Size	Cv	Port Size	Pressure Min.	Max.	Fluid Temp.	Trade Price
04F48S2106A3F	1/4"	.09	1/16"	10	100	104	\$468.63

## Gold Ring Coils

Part No.	Voltage	Watts	Connection	Class	Trade Price
AFPH01	24	6	DIN	F	\$67.22
AFPH05	120	6	DIN	F	\$67.22
AFPH15	240	6	DIN	F	\$67.22
AF4C01	24	6	NEMA 4	F	\$67.22
AF4C05	120	6	NEMA 4	F	\$67.22
AF4C10	208	6	NEMA 4	F	\$67.22
AF4C15	240	6	NEMA 4	F	\$67.22
BF4C05	120	10.2	NEMA 4	F	\$90.27
CFPH01	24	11	DIN	F	\$83.26
CFPH05	120	11	DIN	F	\$83.22
CFPH15	240	11	DIN	F	\$83.22
CF4C01	24	11	NEMA 4	F	\$89.64
CF4C05	120	11	NEMA 4	F	\$89.64
CF4C10	208	11	NEMA 4	F	\$89.64
CF4C15	240	11	NEMA 4	F	\$89.64
CHPH01	24	11	DIN	F	\$165.18
CHPH05	120	11	DIN	H	\$165.18
CHPH15	240	11	DIN	H	\$165.18
CH4C01	24	11	NEMA 4	H	\$171.59
CH4C05	120	11	NEMA 4	H	\$171.59
CH4C15	240	11	NEMA 4	H	\$171.59
3FPH80	24 VDC	11.5	DIN	F	\$83.26
DF4C01	24	16	NEMA 4	F	\$95.41
DF4C05	120	16	NEMA 4	F	\$95.41

## Gold Ring Valve Repair Kits

Part No.	Trade Price
04F20O1106ACFR	\$134.64
04F20O1108ACFR	\$134.64
04F25C2122CAFR	\$120.00
04F25C2122C3FR	\$120.00
04F48S2106ACFR	\$196.28
04F48S2106A3FR	\$196.28
06FS3C2340ACFR	\$133.43
06FS5C2432ACHR	\$151.96
06F23C2140ACFR	\$165.30
06F23C6140ACFR	\$166.64
06F23O2140ACFR	\$165.30
08FS3C2340ACFR	\$147.24
08FS5C2432ACHR	\$147.05
08F22C2140AAFR	\$121.00
08F22C2140ADFR	\$129.25
08F23C2140ACFR	\$161.32
08F23C6140ACFR	\$166.64
08F23O2140ACFR	\$207.54
08F23O2140A3FR	\$149.44
12FS3C2348ACFR	\$141.50
12F22C2148AAFR	\$126.75
12F22C2148A3FR	\$130.46
12F23C6148ACFR	\$144.64
12F23O6148ACFR	\$241.95
16FH5C2164ADFR	\$199.97
16FS5C2364ACFR	\$237.20
16FS5C2464ACHR	\$262.70
16F24C2164A3FR	\$146.45
16F24O2164ACFR	\$246.66
20F24C2172AAFR	\$144.05
20F24C2172A3FR	\$152.97
20FS4C2372AAFR	\$269.29
24FS4C2380AAFR	\$277.32
24F24C2180AAFR	\$181.32
24F24O2180ACFR	\$266.63

**ORIT Series Evaporator Pressure Regulators**

Model	Part No.	Range	Connections	Trade Price
ORIT-6	901117P	0/50	1/2" SAE	\$275.22
ORIT-6	901124P	0/50	5/8" SAE	\$275.22
ORIT-6	901092P	0/50	3/8" ODF	\$275.22
ORIT-6	901093P	0/50	1/2" ODF	\$275.22
ORIT-6	901096P	0/50	5/8" ODF	\$230.62
ORIT-6	901103P	0/50	7/8" ODF	\$230.62
ORIT-6	901110P	0/50	1-1/8" ODF	\$275.22
ORIT-6	901194P	30/100	1/2" SAE	\$275.22
ORIT-6	901201P	30/100	5/8" SAE	\$275.22
ORIT-6	901100P	30/100	3/8" ODF	\$275.22
ORIT-6	901101P	30/100	1/2" ODF	\$275.22
ORIT-6	901173P	30/100	5/8" ODF	\$230.62
ORIT-6	901180P	30/100	7/8" ODF	\$230.62
ORIT-6	901187P	30/100	1-1/8" ODF	\$275.22
ORIT-10	901131P	0/50	7/8" ODF	\$400.09
ORIT-10	901138P	0/50	1-1/8" ODF	\$400.09
ORIT-10	901166P	0/50	1-3/8" ODF	\$400.09
ORIT-10	901208P	30/100	7/8" ODF	\$400.09
ORIT-10	901229P	30/100	1-1/8" ODF	\$400.09
ORIT-10	901250P	30/100	1-3/8" ODF	\$400.09



**SORIT Series Evaporator Pressure Regulators** PKC-1 coil sold separately see pg. 36

Model	Part No.	Range	Port	Connections	Trade Price
SORIT 12	901611P	0/100	25/32"	1-1/8" ODF	\$779.86
SORIT 15	901618P	0/100	1"	1-3/8" ODF	\$1022.73
SORIT 20	901625P	0/100	1-5/16"	1-5/8" ODF	\$1244.32



**SORIT Series Replacement Parts**

Model	Part No.	Trade Price
KY1005-1	958016P	PILOT ASSEMBLY FITS SORIT 12,15, 20 \$325.47
KSORI12	958005P	Internal Parts Kit for SORIT 12 \$295.21
KSORI15	958007P	Internal Parts Kit for SORIT 15 \$239.60
KSORI20	958009P	Internal Parts Kit for SORIT 20 \$298.56

## LAC Series Head Pressure Controls



Model	Part No.	Description	Connections	Trade Price
LAC-4-100	903017P	Head Pressure Control 100PSI	3/8" x 3/8" x 3/8" ODF	\$153.08
LAC-4-100	903031P	Head Pressure Control 100PSI	1/2" x 1/2" x 1/2" ODF	\$153.08
LAC-4-180	903024P	Head Pressure Control 180PSI	3/8" x 3/8" x 3/8" ODF	\$153.08
LAC-4-180	903038P	Head Pressure Control 180PSI	1/2" x 1/2" x 1/2" ODF	\$153.08
LAC-4-210 **	903005P	Head Pressure Control 210PSI	3/8" x 3/8" x 3/8" ODF	\$176.60
LAC-4-295HP	903111P	Head Pressure Control 295PSI	1/2" x 1/2" x 1/2" ODF	\$190.55
LAC-5-100	903068P	Head Pressure Control 100PSI	1/2" x 1/2" x 1/2" ODF	\$287.16
LAC-5-100	903050P	Head Pressure Control 100PSI	5/8" x 5/8" x 5/8" ODF	\$287.16
LAC-5-100	903069P	Head Pressure Control 100PSI	7/8" x 7/8" x 7/8" ODF	\$301.49
LAC-5-100	903059P	Head Pressure Control 100PSI	1-1/8" x 1-1/8" x 1-1/8" ODF	\$301.49
LAC-5-180	903030P	Head Pressure Control 180PSI	1/2" x 1/2" x 1/2" ODF	\$287.16
LAC-5-180	903029P	Head Pressure Control 180PSI	5/8" x 5/8" x 5/8" ODF	\$287.16
LAC-5-180	903033P	Head Pressure Control 180PSI	7/8" x 7/8" x 7/8" ODF	\$301.49
LAC-5-180	903067P	Head Pressure Control 180PSI	1-1/8" x 1-1/8" x 1-1/8" ODF	\$301.49
LAC-5-210**	903071P	Head Pressure Control 210PSI	1/2" x 1/2" x 1/2" ODF	\$287.16
LAC-5-210**	903072P	Head Pressure Control 210PSI	5/8" x 5/8" x 5/8" ODF	\$287.16
LAC-5-210**	903073P	Head Pressure Control 210PSI	7/8" x 7/8" x 7/8" ODF	\$301.49
LAC-5-210**	903074P	Head Pressure Control 210PSI	1-1/8" x 1-1/8" x 1-1/8" ODF	\$301.49
LAC-5-295HP	903107P	Head Pressure Control 295PSI	5/8" x 5/8" x 5/8" ODF	\$313.48
LAC-10-100	903075P	Head Pressure Control 100PSI	1-3/8" x 7/8" x 7/8" ODF	\$521.22
LAC-10-100	903063P	Head Pressure Control 100PSI	1-3/8" x 1-1/8" x 1-1/8" ODF	\$521.22
LAC-10-180	903076P	Head Pressure Control 180PSI	1-3/8" x 7/8" x 7/8" ODF	\$521.22
LAC-10-180	903066P	Head Pressure Control 180PSI	1-3/8" x 1-1/8" x 1-1/8" ODF	\$521.22
LAC-10-210 **	903077P	Head Pressure Control 210PSI	1-3/8" x 7/8" x 7/8" ODF	\$521.22
LAC-10-210**	903078P	Head Pressure Control 210PSI	1-3/8" x 1-1/8" x 1-1/8" ODF	\$521.22
LAC-10-295HP	903106P	Head Pressure Control 210PSI	1-3/8" x 7/8" x 7/8" ODF	\$541.01
LAC-10-295HP	903109P	Head Pressure Control 295PSI	1-3/8" x 1-1/8" x 1-1/8" ODF	\$541.01

\*\* Sold without Strainer

## Discharge By-Pass Valves

Model	Part No.	Description	Connections	Trade Price
ADRS-2	903273P	Discharge Bypass Valve 0/30 Range	3/8" ODF	\$232.73
ADRS-2	903280P	Discharge Bypass Valve 0/30 Range	1/2" ODF	\$232.73
ADRS-2	903287P	Discharge Bypass Valve 0/30 Range	5/8" ODF	\$232.73
ADRS-2	903357P	Discharge Bypass Valve 0/80 Range	3/8" ODF	\$232.73
ADRS-2	903364P	Discharge Bypass Valve 0/80 Range	1/2" ODF	\$232.73
ADRS-2	903371P	Discharge Bypass Valve 0/80 Range	5/8" ODF	\$232.73
ADRSE-2	903315P	Discharge Bypass Valve 0/30 Range	3/8" ODF	\$247.76
ADRSE-2	903322P	Discharge Bypass Valve 0/30 Range	1/2" ODF	\$247.76
ADRSE-2	903329P	Discharge Bypass Valve 0/30 Range	5/8" ODF	\$247.76
ADRSE-2	903399P	Discharge Bypass Valve 0/80 Range	3/8" ODF	\$214.75
ADRSE-2	903406P	Discharge Bypass Valve 0/80 Range	1/2" ODF	\$214.75
ADRSE-2	903413P	Discharge Bypass Valve 0/80 Range	5/8" ODF	\$214.75
ADRP-3	903441P	Discharge Bypass Valve 0/30 Range	1/2" ODF	\$281.23
ADRP-3	903448P	Discharge Bypass Valve 0/30 Range	5/8" ODF	\$281.23
ADRP-3	903497P	Discharge Bypass Valve 0/80 Range	1/2" ODF	\$281.23
ADRP-3	903504P	Discharge Bypass Valve 0/80 Range	5/8" ODF	\$281.23
ADRPE-3	903469P	Discharge Bypass Valve 0/30 Range	1/2" ODF	\$281.23
ADRPE-3	903476P	Discharge Bypass Valve 0/30 Range	5/8" ODF	\$281.23
ADRPE-3	903525P	Discharge Bypass Valve 0/80 Range	1/2" ODF	\$243.72
ADRPE-3	903532P	Discharge Bypass Valve 0/80 Range	5/8" ODF	\$243.72
ADRHE-6	903553P	Discharge Bypass Valve 0/30 Range	5/8" ODF	\$540.91
ADRHE-6	903560P	Discharge Bypass Valve 0/30 Range	7/8" ODF	\$540.91
ADRHE-6	903567P	Discharge Bypass Valve 0/30 Range	1-1/8" ODF	\$540.91
ADRHE-6	903574P	Discharge Bypass Valve 0/80 Range	5/8" ODF	\$492.22
ADRHE-6	903581P	Discharge Bypass Valve 0/80 Range	7/8" ODF	\$492.22
ADRHE-6	903588P	Discharge Bypass Valve 0/80 Range	1-1/8" ODF	\$492.22



## Discharge By-Pass Valves

Model	Part No.	Range	Connections	Trade Price
HGBE-5-95/115	904068P	95/115	1/2" ODF	\$250.67
HGBE-5-95/115	904067P	95/115	5/8" ODF	\$250.67
HGBE-8-75/150	904062P	75/150	7/8" ODF	\$522.59



## OROA Series Head Pressure Controls

Model	Part No.	Pressure Setting	Connections	Trade Price
OROA-5 100 5/8	902905P	100 PSI	5/8" x 5/8" x 5/8" ODF	\$255.68
OROA-5 100 7/8	902912P	100 PSI	7/8" x 7/8" x 7/8" ODF	\$255.68
OROA-5 180 5/8	902919P	180 PSI	5/8" x 5/8" x 5/8" ODF	\$255.68
OROA-5 180 7/8	902926P	180 PSI	7/8" x 7/8" x 7/8" ODF	\$255.68
OROA-5 210 5/8	902903P	210 PSI	5/8" x 5/8" x 5/8" ODF	\$294.99
OROA-5 210 7/8	902929P	210 PSI	7/8" x 7/8" x 7/8" ODF	\$294.99
OROA-5 180 7/8	902954P	180 PSI	7/8" x 7/8" x 7/8" ODF	\$255.68





## CRO Series Crankcase Pressure Regulators

Model	Part No.	Pressure Setting	Connections	Trade Price
CRO-4	900007P	0/20	1/2" SAE	\$201.21
CRO-4	900001P	0/20	3/8" ODF	\$201.21
CRO-4	900002P	0/20	1/2" ODF	\$174.38
CRO-4	900043P	0/50	3/8" ODF	\$201.21
CRO-4	900004P	0/50	1/2" ODF	\$174.38
CRO-4	900005P	0/75	3/8" ODF	\$201.21
CRO-4	900006P	0/75	1/2" ODF	\$174.38
CRO-6	900409P	0/60	1/2" ODF	\$239.03
CRO-6	900430P	0/60	5/8" ODF	\$239.03
CRO-6	900444P	0/60	7/8" ODF	\$239.03
CRO-6	900309P	30/110	1/2" ODF	\$239.03
CRO-6	900310P	30/110	5/8" ODF	\$239.03
CRO-6	900315P	30/110	7/8" ODF	\$239.03



## CROT Series Crankcase Pressure Regulators

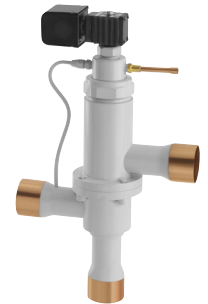
Model	Part No.	Pressure Setting	Connections	Trade Price
CROT-6	900584P	0/60	1/2" SAE	\$230.66
CROT-6	900591P	0/60	5/8" SAE	\$230.66
CROT-6	900553P	0/60	1/2" ODF	\$230.66
CROT-6	900556P	0/60	5/8" ODF	\$230.66
CROT-6	900570P	0/60	7/8" ODF	\$230.66
CROT-6	900577P	0/60	1-1/8" ODF	\$230.66
CROT-6	900350P	30/110	1/2" SAE	\$230.66
CROT-6	900355P	30/110	5/8" SAE	\$230.66
CROT-6	900359P	30/110	1/2" ODF	\$230.66
CROT-6	900360P	30/110	5/8" ODF	\$230.66
CROT-6	900365P	30/110	7/8" ODF	\$230.66
CROT-10	900598P	0/60	7/8" ODF	\$315.92
CROT-10	900605P	0/60	1-1/8" ODF	\$315.92
CROT-10	900612P	0/60	1-3/8" ODF	\$315.92
CROT-10	900380P	30/110	7/8" ODF	\$315.92
CROT-10	900385P	30/110	1-1/8" ODF	\$315.92
CROT-10	900390P	30/110	1-3/8" ODF	\$315.92





## Heat Reclaim Valves

Model	Part No.	Port Size	Connections	Coil	Trade Price
P8D7B-HP	409600P	3/4"	7/8" ODF	PKC-1	\$561.69
P8D7C-HP	409700P	3/4"	7/8" ODF	PKC-1	\$571.44
P8D9B-HP	409800P	3/4"	1-1/8" ODF	PKC-1	\$561.69
P12D-11B	378000P	1-1/4"	1-3/8" ODF	PKC-1	\$750.39
P12D-11C	378200P	1-1/4"	1-3/8" ODF	PKC-1	\$872.56
P12D-13B	378300P	1-1/4"	1-5/8" ODF	PKC-1	\$761.05
P12D-13C	378900P	1-1/4"	1-5/8" ODF	PKC-1	\$884.94



## Heat Reclaim Valve Repair Kits

Model	Part No.	Trade Price	
PILOT ASSEMBLY	382290P	FOR KS-8D/12D	\$389.24
RKP8DB	380897P	FOR 8D "B" TYPE	\$218.45
RKP8DC	380811P	FOR 8D "C" TYPE	\$218.45
RKP12DB	380871P	FOR 12D "B" TYPE	\$329.64
RKP12DC	380813P	FOR 12D "C" TYPE	\$329.64

## Oil Filtration Products

Model	Part No.	Trade Price		
PF303-T	960071P	Sealed Oil Filter	3/8" SAE	\$188.47
POF413T	960092P	Shell less Filter Element	Field Support	\$188.47
PFE-1	960015P	Filter Element w/Gasket		\$111.40

## Oil Level Control Products

Model	Part No.	Trade Price	
PL60CH	960083P	Oil Level Control less equalizer ftg.	\$321.23
PL60XH	960074P	Oil Level Control w/ equalizer ftg.	\$341.54
AOL-MA/TE	968026P	Adapter	\$103.71
PCV-5	960053P	Oil Differential Check Valve	\$52.58
PCV-10	960055P	Oil Differential Check Valve	\$52.58
PCV-20	960057P	Oil Differential Check Valve	\$52.58
PCV-30	960080P	Oil Differential Check Valve	\$52.58



## Emkarate RL Polyolester Oils

Model	Part No.	Description	Viscosity	Ctn. Qty.	Ctn. Wgt.	Trade Price
LE32-3MAFQ	475392	1 Quart	150 SUS (ISO 32)	4	8	\$45.68
LE 32-3MAF1	475389	1 Gallon	150 SUS (ISO 32)	4	37	\$122.75
LE32-HQ	475399	1 Quart	150 SUS (ISO 32)	4	10.1	\$51.18
LE32H1	475393	1 Gallon	150 SUS (ISO 32)	4	37	\$130.21
LE 68HQ	475413	1 Quart	300 SUS (ISO 68)	4	8	\$50.59
LE 68H1	475403	1 Gallon	300 SUS (ISO 68)	4	37	\$129.76
LE68H5	475406	5 Gallon	300 SUS (ISO 68)	1	44	\$719.60

## Suniso Mineral Oils

Model	Part No.	Description	Viscosity	Ctn. Qty.	Ctn. Wgt.	Trade Price
L316 (3GS)	475326	1 Quart	150 SUS (ISO 32)	12	24	\$23.82
L318 (3GS)	475328	1 Gallon	150 SUS (ISO 32)	4	32	\$37.65
L321 (3GS)	475334	5 Gallon	150 SUS (ISO 32)	1	41	\$199.89
L319 (4GS)	475330	1 Gallon	300 SUS (ISO 68)	4	32	\$37.28
L322 (4GS)	475336	5 Gallon	300 SUS (ISO 68)	1	40	\$194.17
L320 (5GS)	475332	1 Gallon	500 SUS (ISO 100)	4	32	\$38.95

## Virginia Alkybenzene Oils

Model	Part No.	Description	Viscosity	Ctn. Qty.	Ctn. Wgt.	Trade Price
LAB151	475422	1 Gallon	150 SUS (ISO 32)	4	32	\$65.78
LAB201	475426	1 Gallon	200 SUS (ISO 46)	4	32	\$69.83
LAB301	475430	1 Gallon	300 SUS (ISO 68)	4	32	\$92.97

## Virginia Dual Purpose Vacuum Pump Oil

Model	Part No.	Description	Ctn. Qty.	Ctn. Wgt.	Trade Price
L340	475353	1 Quart	12	24	\$14.63
L341	475354	1 Gallon	4	48	\$41.11

## Acid Test Kits

Model	Part No.	Description	Ctn. Qty.	Ctn. Wgt.	Trade Price
TKO	475365	Use with mineral or alkybenzene lubricants.	12	3.7	\$14.77
ETK	475360	Use with Emkarate polyol ester lubricants.	12	3.7	\$14.21
RTK	475363	Use with POE oils to analyze residual mineral oil content.	6	5	\$30.55
OA1	475362	For complete laboratory analysis of any lubricant sample.	1	0.2	\$119.39



## Oil Charging Pumps

Model	Part No.	Description	Ctn. Qty.	Ctn. Wgt.	Trade Price
VOP-H	475368	Hand held style oil pump.	1	2.6	\$210.93

## Premium Coil Cleaners

Model	Part No.	Description	Ctn. Qty.	Ctn. Wgt.	Trade Price
QB1	475210	QWIK-BRITE 1 Gallon	4	46	\$24.91
QB5	475209	QWIK-BRITE 5 Gallon	1	53	\$113.00
FM1	475137	FOAM-MAX 1 Gallon	4	46	\$26.58
AKF1	475117	ALKI-FOAM 1 Gallon	4	44	\$22.58
AKF5	475121	ALKI-FOAM 5 Gallon	1	54	\$95.09
AB1	475096	ACTI-BRITE 1 Gallon	4	39	\$23.91
AB5	475100	ACTI-BRITE 5 Gallon	1	53	\$110.22
AK1	475107	ACTI-KLEAN 1 Gallon	4	37	\$22.27
AK5	475111	ACTI-KLEAN 5 Gallon	1	47	\$97.50
MPC1	475158	PROKLEAN MPC 1 Gallon	4	39	\$28.44
ECC	475135	Electronic Cell Cleaner 1 Quart	4	11	\$18.93
ECC-G	475136	Electronic Cell Cleaner 1 Gallon	4	40	\$36.23
BK-Q	475012	Bio-Klean 1 Quart	12	32	\$21.99
BK-1	475011	Bio-Klean 1 Gallon	4	39	\$39.20
CKIAQ16OZ	475014	Coil Klean IAQ 16oz. Concentrate	12	18	\$15.18
CKIAQ1	475013	Coil Klean IAQ 1 Gallon Concentrate	4	39	\$33.73

**New Patent Pending product QWIK-Brite.**  
**Features include faster cleaning, coil brightening and bio-degradable.**



## Chemical Sprayers

Model	Part No.	Description	Ctn. Qty.	Ctn. Wgt.	Trade Price
1000P	475189	Spray Doc Premium Tank Sprayer 1 Gallon Tank.	1	4.11	\$100.19
050P	475185	Pressurized Hand Sprayer 1/2 Gallon.	6	11.5	\$51.66

## Drain Pan Treatments

Model	Part No.	Description	Ctn. Qty.	Ctn. Wgt.	Trade Price
FT/C	475015	CDC Anti-Clog for up to 5 Ton Systems.	24	2.2	\$7.62
AT/C	475010	CDC Anti-Clog for 5 to 15 Ton Systems.	12	3	\$18.60
PBG1C	475018	Pan Bar Gold Strips Used Up to 1-1/2 Tons.	10	1	\$7.00
PBG2C	475021	Pan Bar Gold Strips Used Up to 2-1/2 Tons.	10	3	\$11.16
PBG3C	475022	Pan Bar Gold Strips Used for 3 to 5 Tons.	10	5	\$14.77
PBG4C	475027	Pan Bar Gold Strips Used for 6 to 10 Tons.	10	7	\$31.69

## Insulation Products

Model	Part No.	Description	Ctn. Qty.	Ctn. Wgt.	Trade Price
K501	475289	Foam Insulation Tape (1/8" x 2" x 30' Roll) Premium	12	10	\$15.39
K502	475290	Foam Insulation Tape (1/8" x 2" x 30' Roll)	12	7.06	\$10.46
PTH1	475484	Premium High Temp Cork Tape 30' Roll	12	42	\$24.48
PT1	475291	Premium Cork Insulation Tape (1/8" x 2" x 30' Roll)	12	38	\$16.05
PP33	475298	Premium Elastic Sealant Cords (3/16" x 100')	12	22.5	\$14.93
PP36	475300	Premium Elastic Sealant Cords (3/8" x 25')	12	28	\$15.25
PP22	475296	Premium Elastic Sealant Compound Slugs ( 2 Lbs.)	24	50	\$15.06
PM11	475311	Insulation Mastic 1 Gallon	4	36	\$67.26

## Heat Transfer, Heat Block

Model	Part No.	Description	Ctn. Qty.	Ctn. Wgt.	Trade Price
PM8	475321	Thermal Mastic 7.5oz. Tube. Increases Heat Transfer	12	6.5	\$20.48
PM21	475313	Thermal Mastic 1 Gallon. Increases Heat Transfer	4	64	\$99.63
PM25	475315	Thermal Mastic 5 Gallon. Increases Heat Transfer	1	75	\$376.20
PM50	475319	Thermal Mastic 55 Gallon. Increases Heat Transfer	1	750	\$2982.48
TB2	475322	Thermal Block 11oz. Tube. Absorbs Heat	12	10	\$19.98

## Water Treatment Products

Model	Part No.	Description	Ctn. Qty.	Ctn. Wgt.	Trade Price
H420-16OZ	475068	Metal Safe Ice Machine Cleaner/Scale Remover 16oz.	12	17	\$11.94
H421	475071	Metal Safe Ice Machine Cleaner/Scale Remover 1 Gallon	4	43	\$77.22
H418-16OZ	475060	Ice Machine Cleaner/Scale Remover 16oz.	12	23	\$11.94
H419	475063	Ice Machine Cleaner/Scale Remover 1 Gallon	4	57	\$69.40
H460B	475287	Acid Pump- Hermetically Sealed and Submersible	1	3	\$379.13
H461	475288	20 ft Hose Set w/Tubing and Clamps for Acid Pump	1	2	\$96.72
GL6	475053	Gas Leak Detector 8oz. Bottle with Dauber	12	9.5	\$9.37
LOC	475054	Locator Leak Detector 32oz Trigger Spray Bottle	4	13	\$17.77
LOC-G	475055	Locator Leak Detector 1 Gallon	4	55	\$41.23
PS1	475000	Pipe Saver Anti-Freeze 1 Gallon	4	39.5	\$41.41
PS55	475004	Pipe Saver Anti-Freeze 55 Gallon	1	512	\$2003.52
PSH	475009	Pipe Saver Hydrometer	1	1	\$34.49
WL1	475084	Liquid Scale Remover 1 Gallon	4	41	\$25.61
WL5	475087	Liquid Scale Remover 5 Gallon	1	47	\$104.45

## Aerosol Products

Model	Part No.	Description	Ctn. Qty.	Ctn. Wgt.	Trade Price
BAC-20	475248	Blast-A-Coil 18oz. for condensers	12	19	\$17.03
CK20	475252	Coil Klean 19oz. for evaporators NSF RATED	12	18	\$12.74
CC20-C	475285	Coat-A-Coil (Clear) 18oz.	12	8.5	\$42.75
VB WASP	475280	Wasp & Hornet Spray 13.5oz.	12	15	\$15.99
CKIAQ20	475255	Coil Klean IAQ 20oz. Aerosol	12	18	\$15.87
P30002	475271	Handi-Foam HC Polyurethane Foam 12oz.	12	14.5	\$12.98
NB9	475267	Nut-Buster Penetrating Rust dissolving Spray 9oz.	12	18	\$21.20



Parker Hannifin Corporation

Broadview, IL 60155

ph: (800) 742-2681 fax: (800) 241-2872

cicaftermarket@parker.com ■ www.parker.com/coolparts

## Vibration Absorbers

Rated for R12, R134a, R22, R407, R502, R404A, R507 and R410A.

Model	Part No.	Description	Max. Working Pressure	Ctn. Qty.	Ctn. Wgt.	Trade Price
VAB2SS	475440	1/4" ODF Vibration Absorber	650 PSIG	1	1	\$25.32
VAB3SS	475442	3/8" ODF Vibration Absorber	650 PSIG	1	1	\$20.71
VAB4SS	475443	1/2" ODF Vibration Absorber	650 PSIG	1	1	\$28.50
VAB5SS	475445	5/8" ODF Vibration Absorber	650 PSIG	1	1	\$27.63
VAB6SS	475446	3/4" ODF Vibration Absorber	650 PSIG	1	2	\$30.99
VAB7SS	475447	7/8" ODF Vibration Absorber	650 PSIG	1	2	\$37.31
VAB9SS	475448	1-1/8" ODF Vibration Absorber	600 PSIG	1	2	\$51.24
VAB11SS	475434	1-3/8" ODF Vibration Absorber	550 PSIG	1	3	\$85.28
VAB13SS	475435	1-5/8" ODF Vibration Absorber	510 PSIG	1	4	\$117.76
VAB17SS	475436	2-1/8" ODF Vibration Absorber	400 PSIG	1	9	\$182.84
VAB21SS	475437	2-5/8" ODF Vibration Absorber	350 PSIG	1	11	\$344.44
VAB25SS	475438	3-1/8" ODF Vibration Absorber	320 PSIG	1	15	\$461.66

# Trade Price Schedule

## PARKER CIC GROUP AFTERMARKET - OFFER OF SALE

The goods, services or work (referred to as the "Products") offered by Parker-Hannifin Corporation, CIC Group Aftermarket ("Seller") are offered for sale at prices to be established by Seller. This offer and its acceptance by any customer ("Buyer") shall be governed by all of the following Terms and Conditions. Buyer's order for any Products described in its document or the attached proposal, quote or offer, when communicated to Seller verbally, or in writing, shall constitute acceptance of this offer.

1. **Terms and Conditions.** Seller's willingness to offer Products for sale or accept an order for Products is subject to the terms and conditions contained in this Offer of Sale (also referred to as the "Terms & Conditions") or any newer version of the same, published by Seller electronically at [www.parker.com/saleterms/](http://www.parker.com/saleterms/). Seller objects to any contrary or additional terms or conditions of Buyer's order or any other document or other communication issued by Buyer.
2. **Minimum Order, Price; Payment.** Minimum order is \$50.00. Prices stated on Seller's offer, proposal or quote ("Quote") are valid for 30 days, except as explicitly otherwise stated therein, and do not include any sales, use, or other taxes or duties unless specifically stated. Subject to credit approval, payment for all purchases is due 30 days from the date of invoice (or such date as may be specified by Seller's Credit Department). Unpaid invoices beyond the specified payment date incur interest at the rate of 1.5% per month or the maximum allowable rate under applicable law.
3. **Shipment; Delivery; Title and Risk of Loss.** Unless otherwise specified by Seller, shipment of all Products shall be FOB Seller's facility, or if international, EXW Seller's facility (INCOTERMS 2010). All delivery dates are approximate. Seller is not responsible for damages resulting from any delay. Regardless of the manner of shipment, delivery occurs and title and risk of loss or damage pass to Buyer, upon placement of the Products in shipment with the carrier at Seller's facility. Unless otherwise stated, Seller may exercise its judgment in choosing the carrier and means of delivery. No deferment of shipment at Buyer's request beyond the respective dates indicated will be made except on terms that will indemnify, defend and hold Seller harmless against all loss and additional expense. Buyer shall be responsible for any additional shipping charges incurred by Seller due to Buyer's acts or omissions.
4. **Warranty.** Seller warrants that the Products sold hereunder shall be free from defects in material or workmanship for a period of twelve months from the date of delivery or 2,000 hours of normal use, whichever occurs first. All prices are based upon the exclusive limited warranty stated above, and upon the following disclaimer: **DISCLAIMER OF WARRANTY: THIS WARRANTY COMPRISES THE SOLE AND ENTIRE WARRANTY PERTAINING TO PRODUCTS PROVIDED. SELLER DISCLAIMS ALL OTHER WARRANTIES, EXPRESS AND IMPLIED, INCLUDING DESIGN, MERCHANTABILITY AND FITNESS FOR A PARTICULAR PURPOSE.**
5. **Claims; Commencement of Actions.** Buyer shall promptly inspect all Products upon receipt. No claims for shortages will be allowed unless reported to the Seller within 10 days of delivery. No other claims against Seller will be allowed unless asserted in writing within 30 days after delivery. Buyer shall notify Seller of any alleged breach of warranty within 30 days after the date the defect is or should have been discovered by Buyer. Any claim or action against Seller based upon breach of contract or any other theory, including tort, negligence, or otherwise must be commenced within 12 months from the date of the alleged breach or other alleged event, without regard to the date discovered.
6. **LIMITATION OF LIABILITY. IN THE EVENT OF A BREACH OF WARRANTY, SELLER WILL, AT ITS OPTION, REPAIR OR REPLACE A DEFECTIVE PRODUCT, OR REFUND THE PURCHASE PRICE WITHIN A REASONABLE PERIOD OF TIME. IN NO EVENT IS SELLER LIABLE FOR ANY SPECIAL, INDIRECT, INCIDENTAL OR CONSEQUENTIAL DAMAGES ARISING OUT OF, OR AS THE RESULT OF, THE SALE, DELIVERY, NON-DELIVERY, SERVICING, USE OR LOSS OF USE OF THE PRODUCTS OR ANY PART THEREOF, OR FOR ANY CHARGES OR EXPENSES OF ANY NATURE INCURRED WITHOUT SELLER'S WRITTEN CONSENT, EVEN IF SELLER HAS BEEN NEGLIGENT, WHETHER IN CONTRACT, TORT OR OTHER LEGAL THEORY. IN NO EVENT SHALL SELLER'S LIABILITY UNDER ANY CLAIM MADE BY BUYER EXCEED THE PURCHASE PRICE OF THE PRODUCTS.**
7. **User Responsibility.** The user, through its own analysis and testing, is solely responsible for making the final selection of the system and Product and assuring that all performance, endurance, maintenance, safety and warning requirements of the application are met. The user must analyze all aspects of the application and follow applicable industry standards and Product information. If Seller provides Product or system options, the user is responsible for determining that such data and specifications are suitable and sufficient for all applications and reasonably foreseeable uses of the Products or systems.
8. **Loss to Buyer's Property.** Any designs, tools, patterns, materials, drawings, confidential information or equipment furnished by Buyer or any other items which become Buyer's property, will be considered obsolete and may be destroyed by Seller after two consecutive years have elapsed without Buyer ordering the items manufactured using such property. Seller shall not be responsible for any loss or damage to such property while it is in Seller's possession or control.
9. **Special Tooling.** A tooling charge may be imposed for any special tooling, including without limitation, dies, fixtures, molds and patterns, acquired to manufacture Products. Such special tooling shall be and remain Seller's property notwithstanding payment of any charges by Buyer. In no event will Buyer acquire any interest in apparatus belonging to Seller which is utilized in the manufacture of the Products, even if such apparatus has been specially converted or adapted for such manufacture and notwithstanding any charges paid by Buyer. Unless otherwise agreed, Seller has the right to alter, discard or otherwise dispose of any special tooling or other property in its sole discretion at any time.
10. **Buyer's Obligation; Rights of Seller.** To secure payment of all sums due or otherwise, Seller retains a security interest all Products delivered to Buyer and this agreement is deemed to be a Security Agreement under the Uniform Commercial Code. Buyer authorizes Seller as its attorney to execute and file on Buyer's behalf all documents Seller deems necessary to perfect its security interest.



# Trade Price Schedule

## PARKER CIC GROUP AFTERMARKET - OFFER OF SALE

11. **Improper use and Indemnity.** Buyer shall indemnify, defend, and hold Seller harmless from any claim, liability, damages, lawsuits, and costs (including attorney fees), whether for personal injury, property damage, patent, trademark or copyright infringement or any other claim, brought by or incurred by Buyer, Buyer's employees, or any other person, arising out of: (a) improper selection, improper application or other misuse of Products purchased by Buyer from Seller; (b) any act or omission, negligent or otherwise, of Buyer; (c) Seller's use of patterns, plans, drawings, or specifications furnished by Buyer to manufacture Product; or (d) Buyer's failure to comply with these terms and conditions. Seller shall not indemnify Buyer under any circumstance except as otherwise provided.
12. **Cancellations and Changes.** Buyer may not modify or cancel any order for any reason, except with Seller's written consent and upon terms that will indemnify, defend and hold Seller harmless against all direct, incidental and consequential loss or damage. Seller may change product features, specifications, designs and availability with notice to Buyer.
13. **Limitation on Assignment.** Buyer may not assign its rights or obligations under this agreement without the prior written consent of Seller.
14. **Force Majeure.** Seller does not assume the risk and is not liable for delay or failure to perform any of Seller's obligations by reason of events or circumstances beyond its reasonable control (hereinafter "Events of Force Majeure"). Events of Force Majeure shall include without limitation: accidents, strikes or labor disputes, acts of any government or government agency, acts of nature, delays or failures in delivery from carriers or suppliers, shortages of materials, or any other cause beyond Seller's reasonable control.
15. **Waiver and Severability.** Failure to enforce any provision of this agreement will not invalidate that provision; nor will any such failure prejudice Seller's right to enforce that provision in the future. Invalidation of any provision of this agreement by legislation or other rule of law shall not invalidate any other provision herein. The remaining provisions of this agreement will remain in full force and effect.
16. **Termination.** Seller may terminate this agreement for any reason and at any time by giving Buyer thirty (30) days advance written notice. Seller may immediately terminate this agreement, in writing, if Buyer: (a) commits a breach of any provision of this agreement (b) appoints a trustee, receiver or custodian for all or any part of Buyer's property (c) files a petition for relief in bankruptcy on its own behalf, or by a third party (d) makes an assignment for the benefit of creditors, or (e) dissolves or liquidates all or a majority of its assets.
17. **Governing Law.** This agreement and the sale and delivery of all Products are deemed to have taken place in, and shall be governed and construed in accordance with, the laws of the State of Ohio, as applicable to contracts executed and wholly performed therein and without regard to conflicts of laws principles. Buyer irrevocably agrees and consents to the exclusive jurisdiction and venue of the courts of Cuyahoga County, Ohio with respect to any dispute, controversy or claim arising out of or relating to this agreement.
18. **Indemnity for Infringement of Intellectual Property Rights.** Seller is not liable for infringement of any patents, trademarks, copyrights, trade dress, trade secrets or similar rights except as provided in this Section. Seller will defend and indemnify Buyer against allegations of infringement of U.S. patents, U.S. trademarks, copyrights, trade dress and trade secrets ("Intellectual Property Rights"). Seller will defend at its expense and will pay the cost of any settlement or damages awarded in an action brought against Buyer based on an allegation that a Product sold pursuant to this agreement infringes the Intellectual Property Rights of a third party. Seller's obligation to defend and indemnify Buyer is contingent on Buyer notifying Seller within ten (10) days after Buyer becomes aware of such allegations of infringement, and Seller having sole control over the defense of any allegations or actions including all negotiations for settlement or compromise. If a Product is subject to a claim that it infringes the Intellectual Property Rights of a third party, Seller may, at its sole expense and option, procure for Buyer the right to continue using the Product, replace or modify the Product so as to make it noninfringing, or offer to accept return of the Product and return the purchase price less a reasonable allowance for depreciation. Notwithstanding the foregoing, Seller is not liable for claims of infringement based on information provided by Buyer, or directed to Products delivered hereunder for which the designs are specified in whole or part by Buyer, or infringements resulting from the modification, combination or use in a system of any Product sold hereunder. The foregoing provisions of this Section constitute Seller's sole and exclusive liability and Buyer's sole and exclusive remedy for infringement of Intellectual Property Rights.
19. **Entire Agreement.** This agreement contains the entire agreement between the Buyer and Seller and constitutes the final, complete and exclusive expression of the terms of sale. All prior or contemporaneous written or oral agreements or negotiations with respect to the subject matter are herein merged.
20. **Compliance with Law, U. K. Bribery Act and U.S. Foreign Corrupt Practices Act.** Buyer agrees to comply with all applicable laws and regulations, including both those of the United Kingdom and the United States of America, and of the country or countries of the Territory in which Buyer may operate, including without limitation the U. K. Bribery Act, the U.S. Foreign Corrupt Practices Act ("FCPA") and the U.S. Anti-Kickback Act (the "Anti-Kickback Act"), and agrees to indemnify and hold harmless Seller from the consequences of any violation of such provisions by Buyer, its employees or agents. Buyer acknowledges that it is familiar with the provisions of the U. K. Bribery Act, the FCPA and the Anti-Kickback Act, and certifies that Buyer will adhere to the requirements thereof. In particular, Buyer represents and agrees that Buyer will not make any payment or give anything of value, directly or indirectly to any governmental official, any foreign political party or official thereof, any candidate for foreign political office, or any commercial entity or person, for the purpose of influencing such person to purchase products or otherwise benefit the business of Seller.

For Products sold by CIC Group Aftermarket Division, the following additional terms apply:

- Payment Terms: Subject to credit approval, 1% 10 & 25 net 30
- Freight prepaid on \$1,500 net order value

