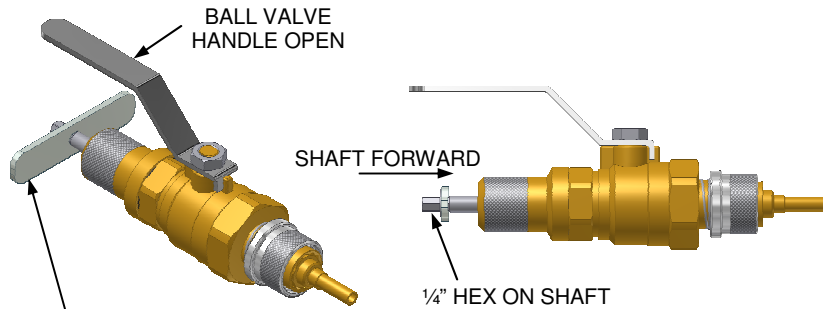


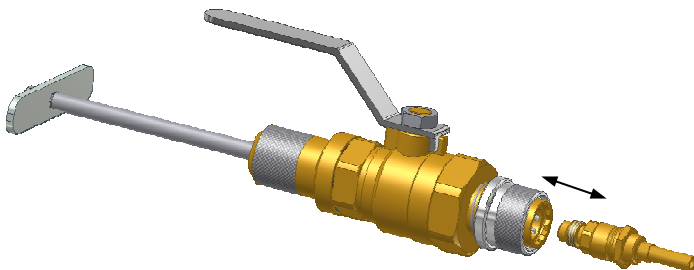
CM-CRTOOL OPERATING INSTRUCTIONS

7. Open ball valve and slide the shaft forward until it meets the Seat. Torque the Core into the Seat.



NOTE: DO NOT USE THIS HANDLE TO TORQUE THE CORES. USE A TORQUE GUN OR TORQUE WRENCH OVER THE 1/4" HEX IN THE SHAFT.

8. Slide the sleeve back and remove the Core Removal Tool.



Product Warranty

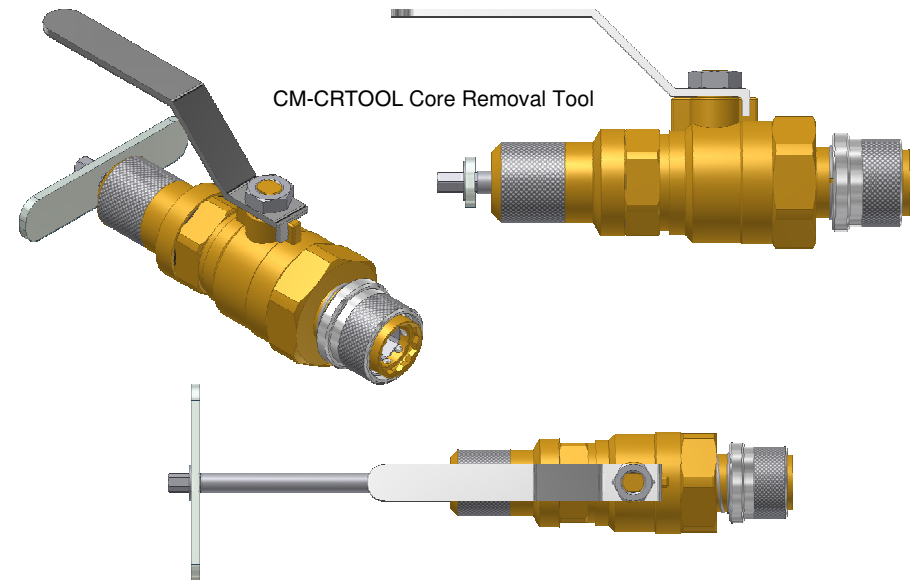
JB Industries, Inc. warrants its products against defects of workmanship and/or material for 12 months from the date of the sale by JB Industries, Inc. This warranty is void if the product is misused, tampered with or used in a manner that is not in accordance with JB Industries, Inc. recommendations and/or instructions. JB Industries, Inc. is not liable for consequential or other damages including, but not limited to, loss, damage, personal injury, or any other expense directly or indirectly arising from the use of or inability to use its products either separately or in combination with other products. ALL OTHER WARRANTIES EXPRESSED OR IMPLIED, WHETHER ORAL OR WRITTEN, INCLUDING BUT NOT LIMITED TO WARRANTIES OR MERCHANTABILITY OR FITNESS FOR A PARTICULAR PURPOSE ARE EXPRESSLY EXCLUDED.

Remedy under this warranty is limited to replacement of the product or an account credit in the amount of the original selling price, at the option of JB Industries, Inc. All allegedly defective products must be returned prepaid transportation to JB Industries, Inc. along with information describing the products performance, unless disposition in the field is authorized in writing by JB Industries, Inc.



CM-CRTOOL Core Removal Tool

Description: The *CoreMax* Removal Tool allows you to remove and replace the core after the unit is in service with minimal loss of media.



Please thoroughly read the instructions prior to operating the CM-CRTOOL Core Removal Tool. If you do not understand instructions, or if components are missing, call *FasTest* before using connector.

- The Removal Tool is designed to mate with a specific application.
- Connectors are NOT designed for permanent connections and are for temporary connections only.

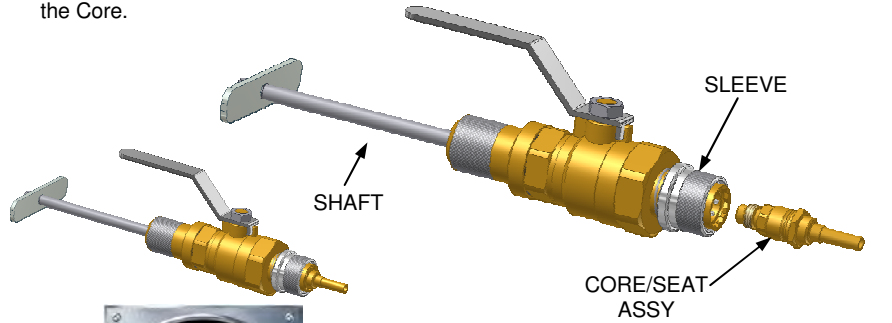
Warning: This connector is NOT internally-valved. All pressure must be dissipated before disconnection.

CoreMax[®]

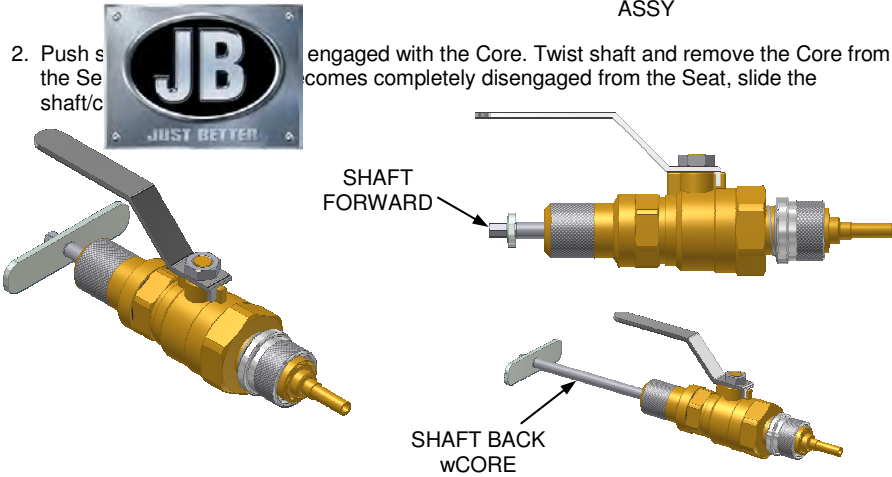
OPERATING INSTRUCTIONS

OPERATION:

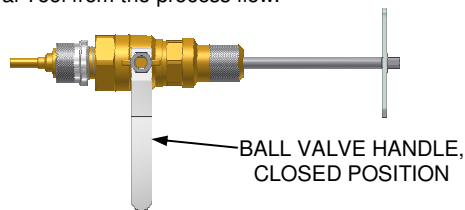
1. Pull the sleeve back and hold, slide the Core Removal Tool over the Core/Seat until the connector stops against the Seat hex. Let the sleeve go forward pushing the latching balls into the groove on the Seat. Make sure the balls are locked into the groove before removing the Core.



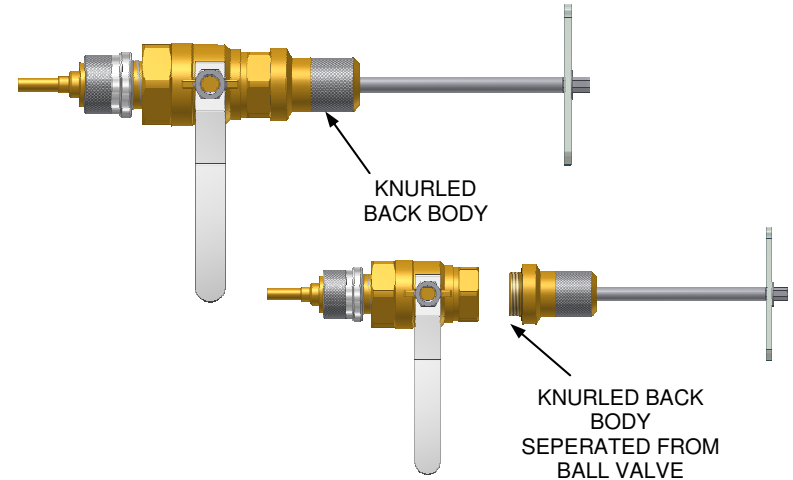
2. Push the Sleeve forward until the Core Removal Tool is engaged with the Core. Twist shaft and remove the Core from the Core Removal Tool. When the Core comes completely disengaged from the Seat, slide the shaft back.



3. Rotate the ball valve handle 90 degrees. This will close/isolate the back half of the Core Removal Tool from the process flow.

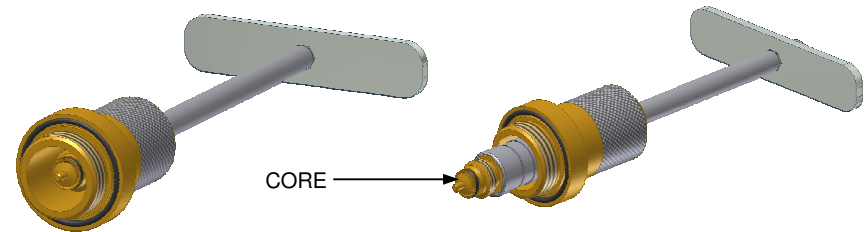


4. You may now unthread BY HAND (release counter-clockwise) the knurled back body from the Core Removal Tool and remove the shaft/body assembly.

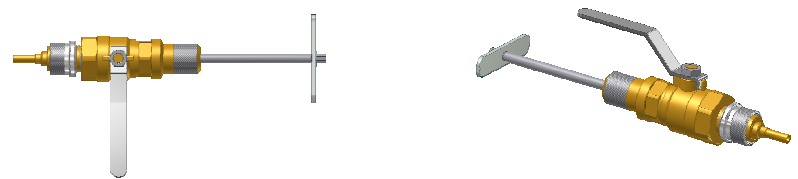


NOTE: While Core is removed, processing can be performed through the Seat and Core Removal Tool. Do not remove from the Seat until the Core is torqued back into the Seat.

5. Push shaft forward to expose Core, replacement/service may now be performed on Core.



6. Once service is complete, replace the shaft/core/knurled back body assembly into the Core Removal Tool, hand tighten the knurled back body into ball valve.



CoreMax[®]