
Replacement Parts Manual

Wall Mounted Package Air Conditioner

Model: WA121

General Notes

- Revised and/or additional pages may be issued from time to time.
- A complete and current manual consists of pages shown in the following contents section.

Important

- Contact the installing and/or local Bard distributor for all parts requirements. Make sure you have the complete model and serial number available from the unit rating plates.

Contents

| Description | Page |
|-----------------------|------|
| Cabinet Components | |
| ♦ Exploded View | 1 |
| ♦ Usage List | 2 |
| Functional Components | |
| ♦ Exploded View | 3 |
| ♦ Usage List | 4 |
| Control Panel | |
| ♦ Exploded View | 5 |
| ♦ Usage List | 6 |
| Blower Assembly | |
| ♦ Exploded View | 7 |
| ♦ Usage List | 7 |

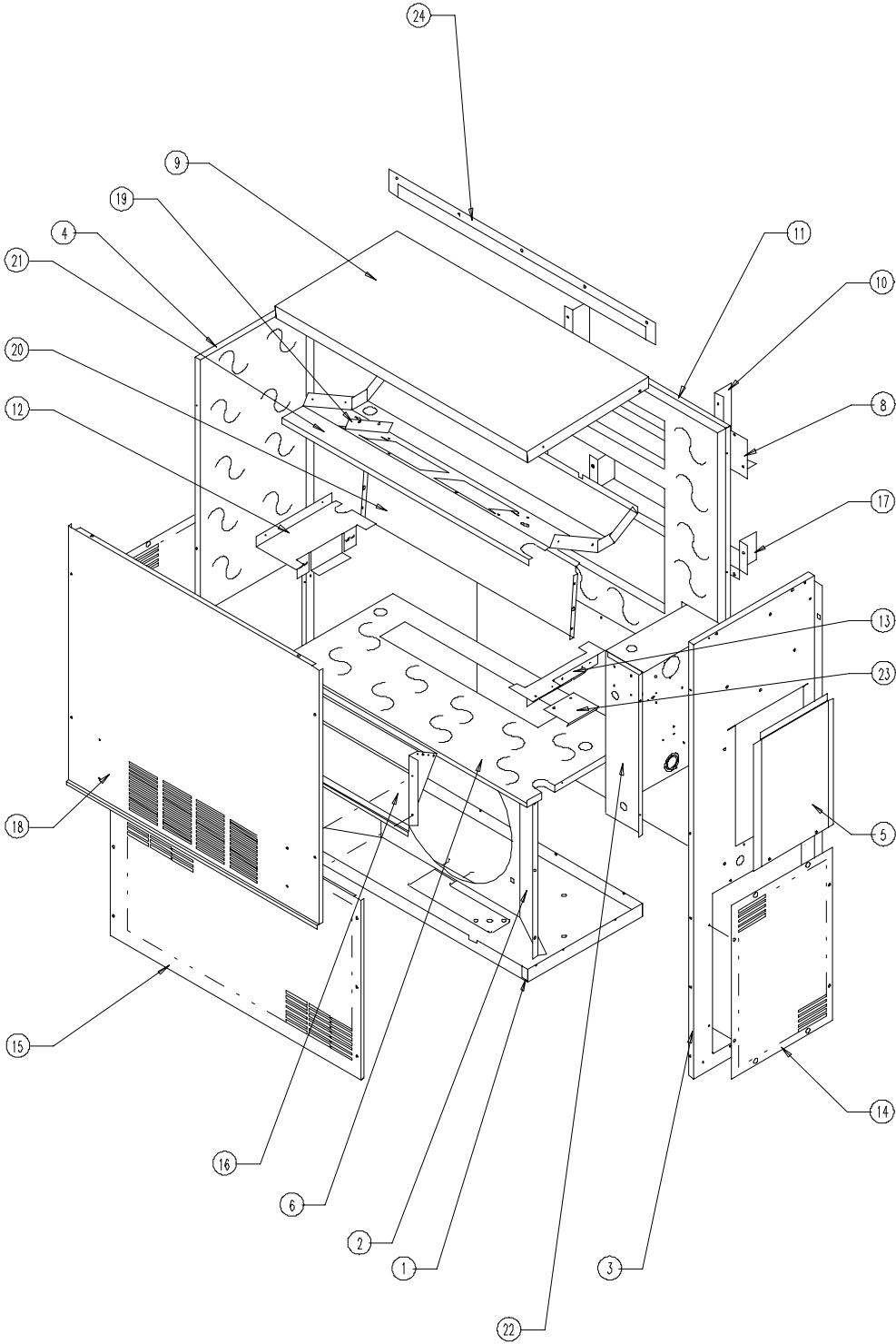


BARDD MANUFACTURING COMPANY
Bryan, Ohio 43506

Since 1914...Moving ahead, just as planned.

Manual: 2110-412 Rev. J
Supersedes: Rev. I
File: 2150-004, Tab 16
Date: 12-22-99

CABINET COMPONENTS

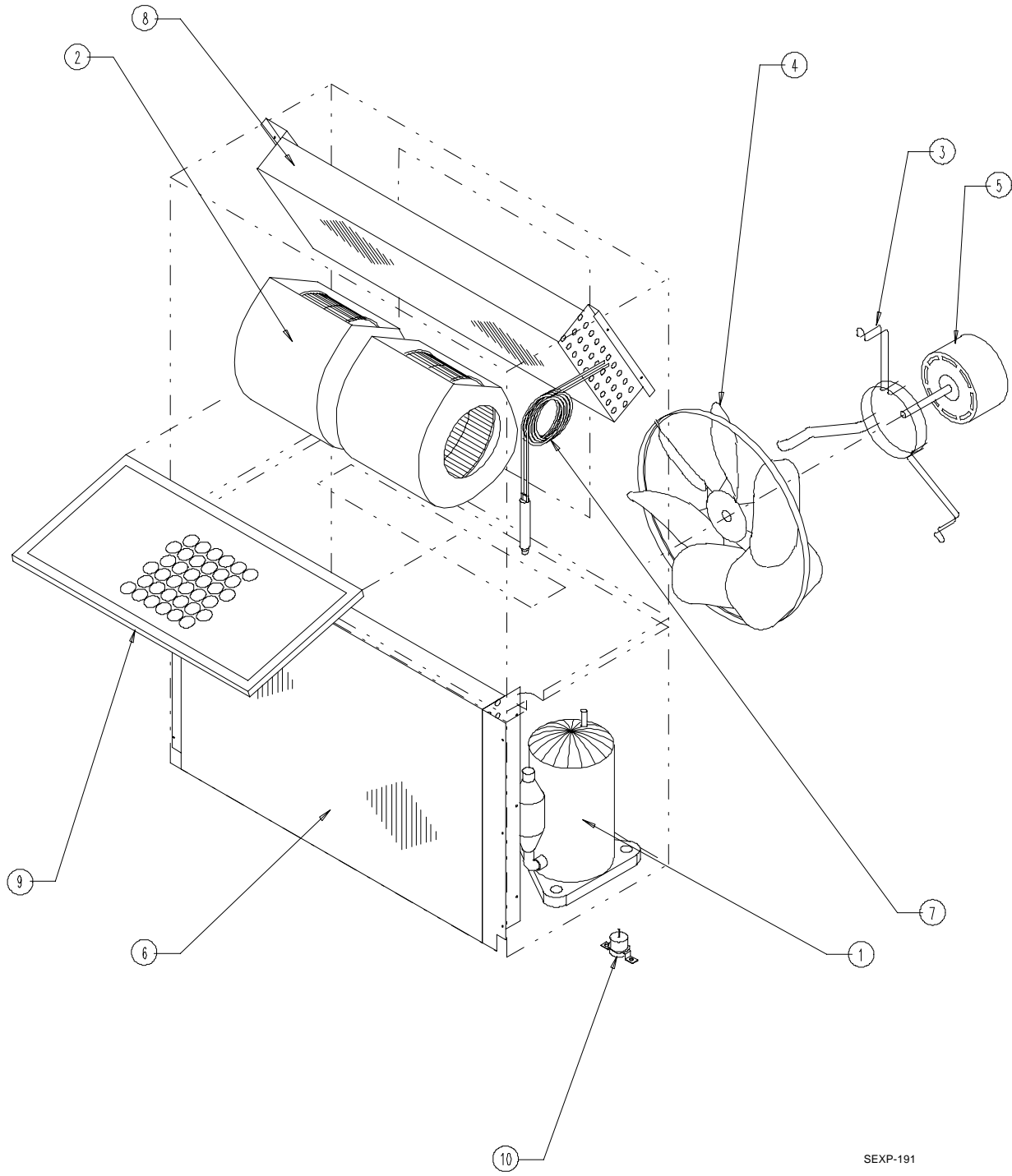


CABINET COMPONENTS

| Drawing No. | Part No. | Description | WA121-A | WA121-K | WA121-G |
|-------------|------------------------|---|---------|---------|---------|
| 1 | S126-223 | Lower Base | X | X | X |
| 2 | 124-025 | Fan Shroud | X | X | X |
| 3 | 500-274-* ① | Right Side | X | X | X |
| 4 | 500-275-* ① | Left Side | X | X | X |
| 5 | S133-120-* ① | Control Panel Cover (Outer) | X | X | X |
| 6 | 520-243 | Condenser Partition | X | X | X |
| 8 | 111-037 | Top Return Air Frame Angle | X | X | X |
| 9 | 506-148-* ① | Top | X | X | X |
| 10 | 111-036 | Outlet Airframe Angle | X | X | X |
| 11 | 508-102 | Back | X | X | X |
| 12 | 113-197 | Left Filter Bracket | X | X | X |
| 13 | 113-198 | Right Filter Bracket | X | X | X |
| 14 | 118-033-* ① | Side Grille | 2 | 2 | 2 |
| 15 | 119-034-* ① | Condenser Grille | X | X | X |
| 16 | BFAD-1 | Fresh Air Damper Assembly | X | X | X |
| 17 | 111-038 | Bottom Return Air Frame Angle | X | X | X |
| 18 | S514-085-* ① | Upper Front | X | X | X |
| 19 | 113-176 | Heater Bracket | X | X | X |
| 20 | 121-245 | Return Partition | X | X | X |
| 21 | S123-21 | Drain Pan | X | X | X |
| 22 | Control Panel Assembly | See Control Panel Assembly Drawing and Parts List | X | X | X |
| 23 | 135-138 | Fill Plate | X | X | X |
| 24 | 113-178-* ① | Top Rain Flashing | X | X | X |

① NOTE: Exterior cabinet parts are manufactured with various paint color options. To insure that you receive the proper paint color, you must include the complete model and serial number of the unit for which cabinet parts are being ordered.

FUNCTIONAL COMPONENTS



SEXP-191

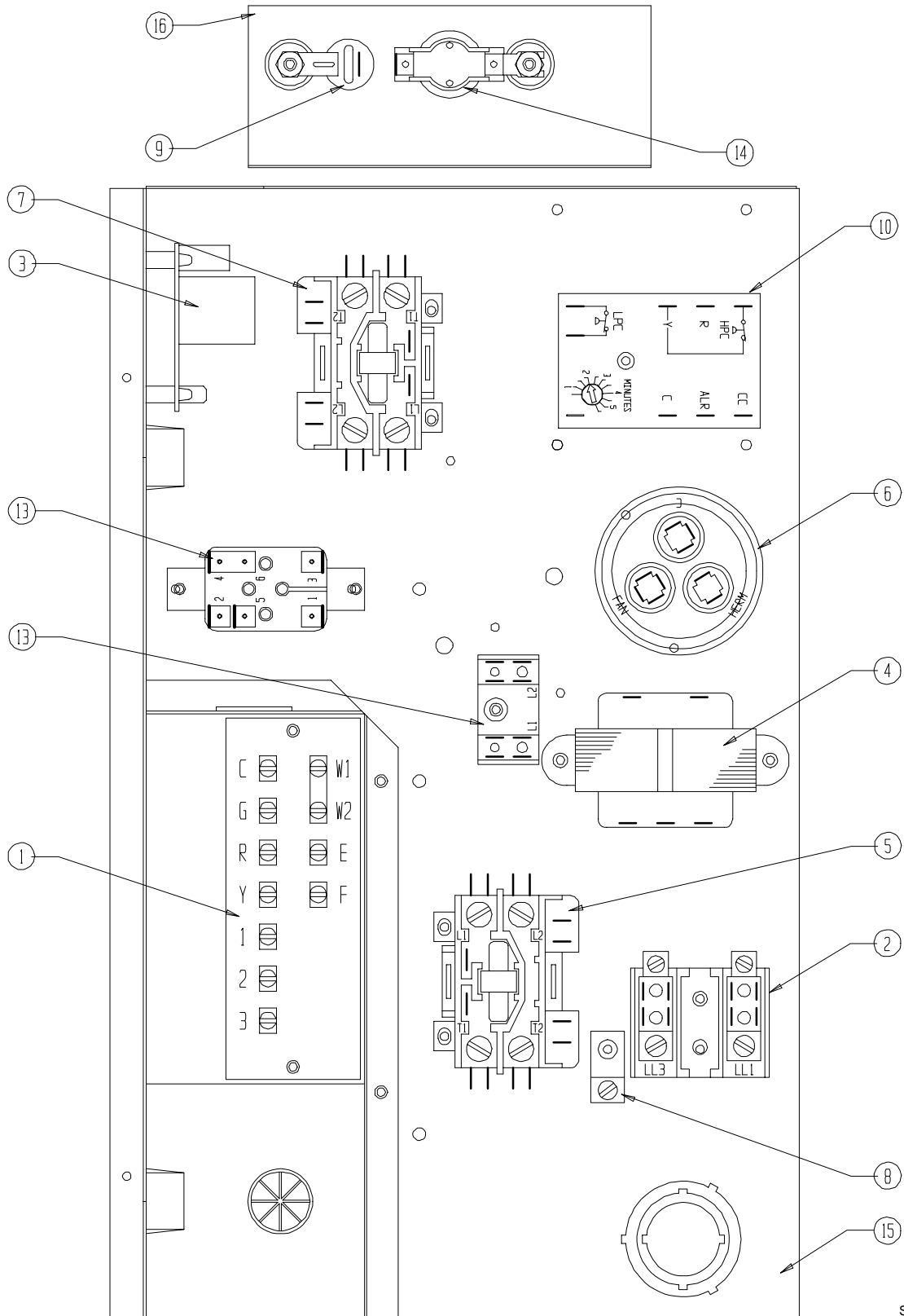
FUNCTIONAL COMPONENTS

| Dwg. No. | Part No. | Description | WA121-A | WA121-K | WA121-G |
|-------------|-----------|--|---------|---------|---------|
| 1 | 8000-158 | Compressor | X | | |
| 1 | 8000-159 | Compressor | | X | |
| 1 | 8000-161 | Compressor | | | X |
| 2 | S900-200 | Blower Assembly 240V | X | | X |
| 2 | S900-201 | Blower Assembly 115V | | X | |
| 3 | 8200-041 | Fan Motor Mount | X | X | X |
| 4 | 5151-047 | Fan Blade | X | X | X |
| 5 | 8101-007 | Condensor Motor 240V | X | | X |
| 5 | 8101-008 | Condensor Motor 115V | | X | |
| 6 | 5051-081 | Condensor Coil | X | X | X |
| 7 | 800-0221 | Cooling Capillary Assembly | X | X | X |
| 8 | 5060-074 | Evaporator Coil | X | X | X |
| 9 | 7003-021 | Air Filter 1" Washable | X | X | X |
| 9 | 7004-001 | Air Filter 1" Throw-Away | X | X | X |
| 9 | 7004-028 | Air Filter 2" Pleated ① | X | X | X |
| 10 | 5651-110 | Drain Valve | X | X | X |
| NS | 1804-0106 | High Pressure Switch Service Kit (Flare) ① | X | X | X |
| NS | 1804-0107 | Low Pressure Switch Service Kit (Flare) ① | X | X | X |
| NS | CMA-25 | Low Ambient Control Service Kit (Flare) ① | X | X | X |
| NS | 8402-085 | Compressor Overload | | | X |
| NS | 8402-086 | Compressor Overload | X | | |
| NS | 8402-087 | Compressor Overload | | X | |

NS – Not Shown

① – Optional on these models

CONTROL PANEL



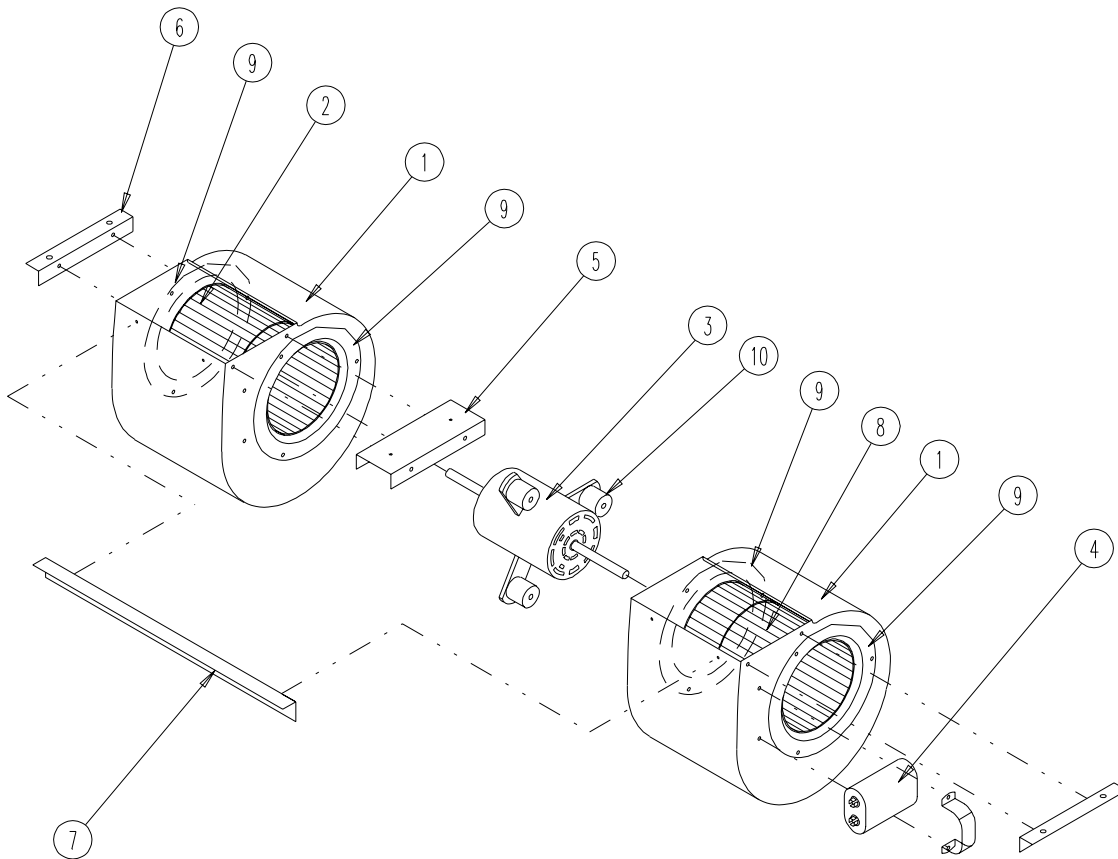
SEXP-195

CONTROL PANEL

| Drawing No. | Part No. | Description | WA121-A00 | WA121-A03 | WA121-A05 | WA121-K00 | WA121-K02 | WA121-G00 | WA121-G02 | WA121-G03 |
|-------------|----------|-----------------------------------|-----------|-----------|-----------|-----------|-----------|-----------|-----------|-----------|
| 1 | 8607-020 | Low Voltage Terminal Strip | X | X | X | X | X | X | X | X |
| 2 | 8607-013 | Terminal Block 2 Pole | X | X | X | X | X | X | X | X |
| 3 | 8201-056 | Blower Control | X | X | X | X | X | X | X | X |
| 4 | 8407-034 | Transformer | X | X | X | | | X | X | X |
| 4 | 8407-034 | Transformer | | | | X | X | | | |
| 5 | 8401-006 | Compressor Contactor | X | X | X | X | X | X | X | X |
| 6 | 8552-046 | Compressor Capacitor | X | X | X | X | X | X | X | X |
| 7 | 8401-007 | Heat Contactor | | X | X | | X | | X | X |
| 8 | 8611-006 | Ground Terminal | X | X | X | X | X | X | X | X |
| 9 | 8402-091 | Thermal Cut Off | | X | X | | X | | X | X |
| 10 | 8201-088 | Compressor Control Module | X | X | X | X | X | X | X | X |
| 13 | 8201-062 | Alarm Relay (Optional) | X | X | X | X | X | | | |
| 13 | 8607-017 | Terminal Block (Optional) (Shown) | X | X | X | X | X | | | |
| 14 | 8402-084 | Limit | | X | X | | X | | X | X |
| 15 | 117-154 | Control Panel | X | X | X | X | X | X | X | X |
| 16 | 8604-097 | Heat Strip 3.6KW | | X | | | | | | X |
| 16 | 8604-098 | Heat Strip 5.0KW | | | X | | | | | |
| 16 | 8604-099 | Heat Strip 2.2KW | | | | | X | | | |
| 16 | 8604-109 | Heat Strip 2.0KW | | | | | | | X | |
| NS | 4095-114 | Wiring Diagram | | X | X | | | | X | X |
| NS | 4095-115 | Wiring Diagram | X | | | | | X | | |
| NS | 4095-116 | Wiring Diagram | | | | X | | | | |
| NS | 4095-117 | Wiring Diagram | | | | | X | | | |

NS – Not Shown

BLOWER ASSEMBLY



SEXP-196

| Drawing No. | Part No. | Description | 900-200 | 900-201 |
|-------------|----------|------------------------|---------|---------|
| 1 | 151-114 | Housing * | X | X |
| 2 | 5152-085 | Wheel (CCW) Left | X | X |
| 3 | 8101-009 | Blower Motor (230/208) | X | |
| 3 | 8101-010 | Blower Motor (115) | | X |
| 4 | 8552-001 | Capacitor 4MFD | X | |
| 4 | 8552-002 | Capacitor 5MFD | | X |
| 5 | 141-203 | Center Blower Support | X | X |
| 6 | 105-908 | Side Angle | 2 | 2 |
| 7 | 105-902 | Front Brace | X | X |
| 8 | 5152-084 | Wheel (CW) Right | X | X |
| 9 | 144-180 | Inlet Ring | 4 | 4 |
| 11 | 5451-018 | Mounting Grommet | 3 | 3 |

* Note: Replace with new rings.