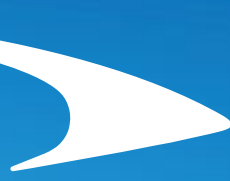
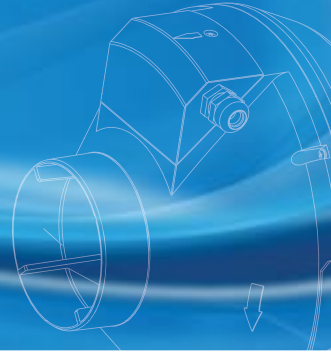




CFMTM
CONTINENTAL FAN



*better AIRFLOW by DESIGN*TM



Commercial Fans & Dampers



WALL FANS

GEF GUARD MOUNT WALL FANS

FEATURES & BENEFITS

- Suitable for through the wall installation
- 2 or 3 speed operation, pull chain switch
- 120 VAC single phase 60 Hz operation
- UL/CSA approved motor
- Totally enclosed permanently lubricated motor
- External junction box
- Aluminum fan blades
- Plated steel spiral wire guard
- Mounts directly to inside wall
- Sizes: 10" to 30"
- Capacities to 3950 cfm



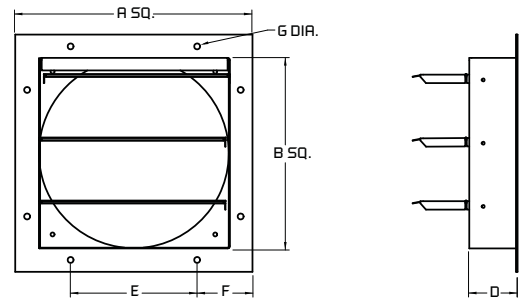
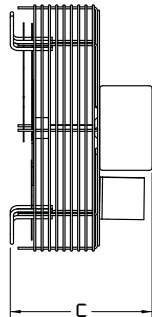
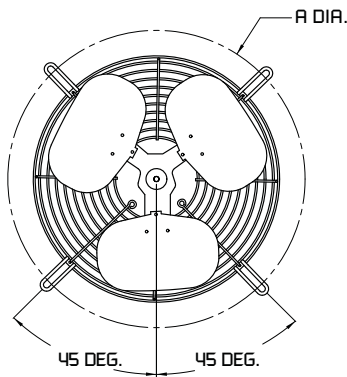
APPLICATIONS

- Warehouse ventilation
- General ventilation
- Factory ventilation
- Equipment room ventilation
- Mechanical room exhaust
- Equipment cooling

ACCESSORIES / OPTIONS

- WS wall shutter
 - Aluminum blades; galvanized steel frame

MODEL	MTR HP	AMPS (HIGH)	AIRFLOW PERFORMANCE (CFM)		
			HIGH	MEDIUM	LOW
GEF-10	1/12	1.0	680	540	460
GEF-12	1/12	1.1	825	710	560
GEF-14	1/8	2.0	1520	1400	1250
GEF-16	1/8	2.1	2100	1900	1700
GEF-18	1/8	2.2	2300	2100	1850
GEF-20	1/4	2.3	2925	N/A	2380
GEF-24	1/4	2.5	3400	N/A	2770
GEF-30	1/4	2.7	3950	N/A	3080



MODEL	DIMENSIONS IN INCHES*		WT (LBS)
	A	C	
GEF-10	14.1	5.8	11
GEF-12	16.4	6.8	12
GEF-14	18.2	7.6	17
GEF-16	20.3	7.6	18
GEF-18	22.6	7.3	19
GEF-20	25.4	9.1	34
GEF-24	29.0	9.6	38
GEF-30	34.8	9.6	42

MODEL	DIMENSIONS IN INCHES*					
	A	B	D	E	F	G
WS-10	13.0	10.1	2.5	6.0	3.5	0.3
WS-12	15.0	12.1	2.5	8.0	3.5	0.3
WS-14	17.0	14.1	2.5	10.0	3.5	0.3
WS-16	19.0	16.1	2.5	12.0	3.5	0.3
WS-18	21.0	18.1	2.5	14.0	3.5	0.3
WS-20	23.0	20.1	2.5	16.0	3.5	0.3
WS-24	27.0	24.1	2.5	20.0	3.5	0.3
WS-30	33.0	30.1	3.0	26.0	3.5	0.3

*DO NOT USE FOR CONSTRUCTION

CONSULT FACTORY FOR CERTIFIED PRINTS

PEF PANEL MOUNT WALL FANS

FEATURES & BENEFITS

- Suitable for through the wall installation
- 2 or 3 speed operation, pull chain switch
- 120 VAC single phase 60 Hz operation
- UL/CSA approved motor
- Totally enclosed permanently lubricated motor
- External junction box
- Aluminum fan blades
- Plated steel spiral wire guard
- Mounts directly to inside wall
- Sizes: 10" to 30"
- Capacities to 3950 cfm



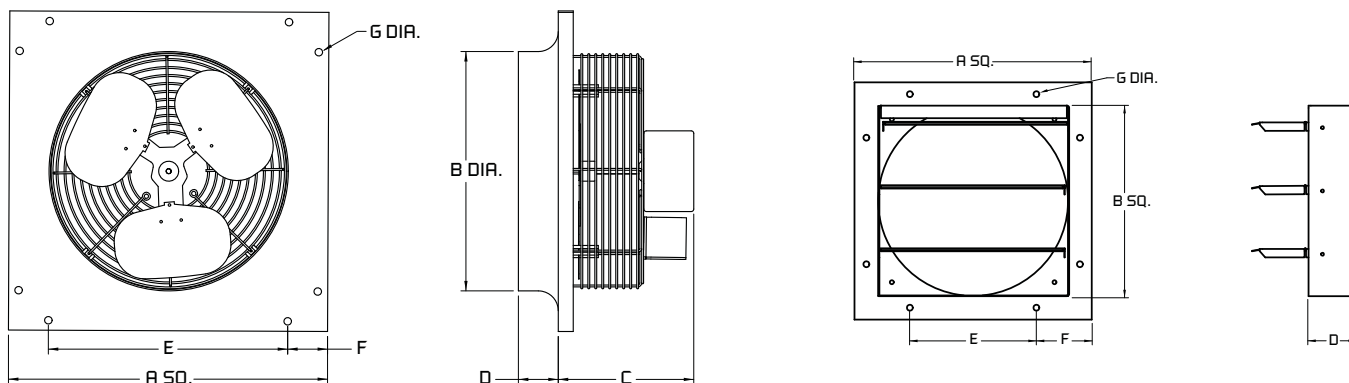
APPLICATIONS

- Warehouse ventilation
- General ventilation
- Factory ventilation
- Equipment room ventilation
- Mechanical room exhaust
- Equipment cooling

ACCESSORIES / OPTIONS

- WS wall shutter
 - Aluminum blades; galvanized steel frame

MODEL	MTR HP	AMPS (HIGH)	AIRFLOW PERFORMANCE (CFM)		
			HIGH	MEDIUM	LOW
PEF-10	1/12	1.0	680	540	460
PEF-12	1/12	1.1	825	710	560
PEF-14	1/8	2.0	1520	1400	1250
PEF-16	1/8	2.1	2100	1900	1700
PEF-18	1/8	2.2	2300	2100	1850
PEF-20	1/4	2.3	2925	N/A	2380
PEF-24	1/4	2.5	3400	N/A	2770
PEF-30	1/4	2.7	3950	N/A	3080



MODEL	DIMENSIONS IN INCHES*							WT (LBS)
	A	B	C	D	E	F	G	
PEF-10	12.5	10.3	6.1	1.0	3.8	4.4	0.3	11
PEF-12	14.5	12.3	7.1	1.0	5.8	4.4	0.3	17
PEF-14	17.0	14.3	7.9	1.5	8.3	4.4	0.3	17
PEF-16	19.0	16.3	7.9	1.9	10.3	4.4	0.3	18
PEF-18	21.0	18.1	7.6	1.8	12.3	4.4	0.3	26
PEF-20	23.0	20.3	9.4	1.8	14.3	4.4	0.3	34
PEF-24	28.0	24.3	9.9	2.5	18.3	4.4	0.3	48
PEF-30	34.0	30.3	9.9	2.5	24.3	4.4	0.3	55

MODEL	DIMENSIONS IN INCHES*					
	A	B	D	E	F	G
WS-10	13.0	10.1	2.5	6.0	3.5	0.3
WS-12	15.0	12.1	2.5	8.0	3.5	0.3
WS-14	17.0	14.1	2.5	10.0	3.5	0.3
WS-16	19.0	16.1	2.5	12.0	3.5	0.3
WS-18	21.0	18.1	2.5	14.0	3.5	0.3
WS-20	23.0	20.1	2.5	16.0	3.5	0.3
WS-24	27.0	24.1	2.5	20.0	3.5	0.3
WS-30	33.0	30.1	3.0	26.0	3.5	0.3

*DO NOT USE FOR CONSTRUCTION

CONSULT FACTORY FOR CERTIFIED PRINTS

WALL FANS

SEF SHUTTER MOUNT WALL FANS

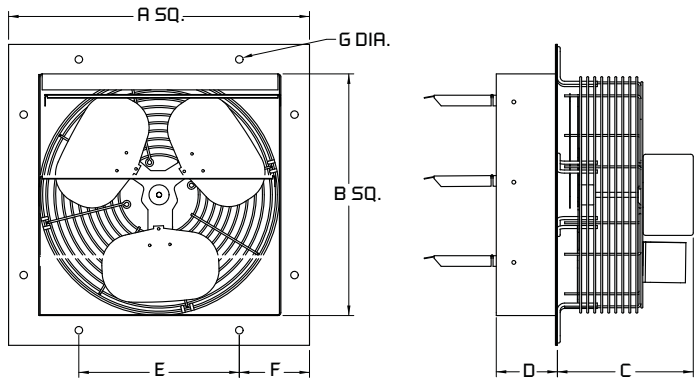
FEATURES & BENEFITS

- Suitable for through the wall installation
- 2 or 3 speed operation, pull chain switch
- 120 VAC single phase 60 Hz operation
- UL/CSA approved motor
- Totally enclosed permanently lubricated motor
- External junction box
- Aluminum fan blades in galvanized frame
- Plated steel spiral wire guard
- Mounts directly to inside wall
- Eliminates need for external framing
- Sizes: 10" to 30"
- Capacities to 3950 cfm



APPLICATIONS

- Warehouse ventilation
- General ventilation
- Factory ventilation
- Equipment room ventilation



MODEL	MTR HP	AMPS (HIGH)	AIRFLOW PERFORMANCE (CFM)		
			HIGH	MEDIUM	LOW
SEF-10	1/12	1.0	680	540	460
SEF-12	1/12	1.1	825	710	560
SEF-14	1/8	2.0	1520	1400	1250
SEF-16	1/8	2.1	2100	1900	1700
SEF-18	1/8	2.2	2300	2100	1850
SEF-20	1/4	2.3	2925	N/A	2380
SEF-24	1/4	2.5	3400	N/A	2770
SEF-30	1/4	2.7	3950	N/A	3080

MODEL	DIMENSIONS IN INCHES*							WT (LBS)
	A	B	C	D	E	F	G	
SEF-10	13.0	10.1	6.1	2.5	6.0	3.5	0.3	11
SEF-12	15.0	12.1	7.1	2.5	8.0	3.5	0.3	16
SEF-14	17.0	14.1	7.9	2.5	10.0	3.5	0.3	17
SEF-16	19.0	16.1	7.9	2.5	12.0	3.5	0.3	18
SEF-18	21.0	18.1	7.6	2.5	14.0	3.5	0.3	25
SEF-20	23.0	20.1	9.4	2.5	16.0	3.5	0.3	34
SEF-24	27.0	24.1	9.9	2.5	20.0	3.5	0.3	47
SEF-30	33.0	30.1	9.9	3.0	26.0	3.5	0.3	54

*DO NOT USE FOR CONSTRUCTION

CONSULT FACTORY FOR CERTIFIED PRINTS

WEB HEAVY DUTY WALL FANS



FEATURES & BENEFITS

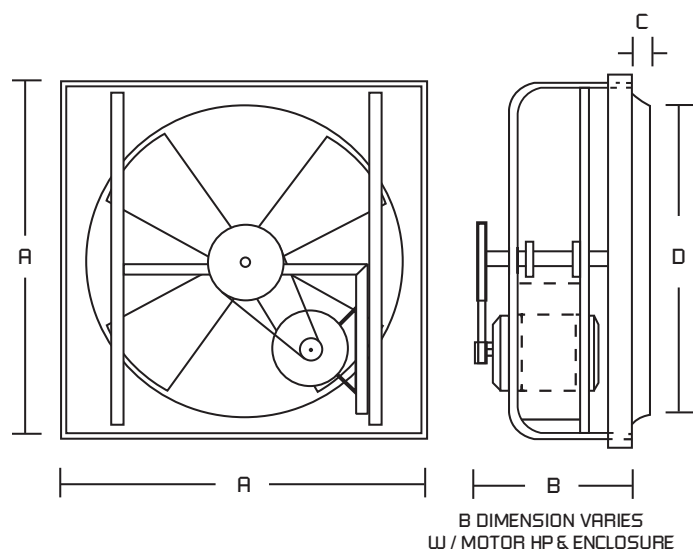
- Heavy duty 16 Ga. steel venturi with tubular steel bracing
- Shipped fully assembled, tested and ready to install
- Industrial grade gray enamel finish
- Steel blade impeller
- Permanently lubricated drive shaft bearings
- Permanently lubricated ball bearing motor
- Single or three phase continuous duty motor
- Sizes range from 24" to 60"
- Belt drive capacities to 39,000 cfm
- Available in the following voltages:
 - o 115/230V 1 phase
 - o 230/460V 3 phase
 - o 575V 3 phase

APPLICATIONS

- General ventilation
- Industrial drying
- Renewable energy
- OEM condensing units
- Marine / shipboard applications
- Circulation / recirculation units

ACCESSORIES / OPTIONS

- Mounting box
- Discharge shutter
- Rear box guard kit

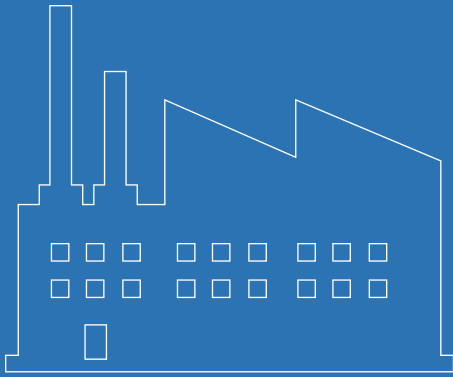


MODEL	DIMENSIONS IN INCHES*				WT (LBS)	
	A	B	C	D	LESS MTR	WITH MTR
WEB-24	30	18	3.5	25	60	90
WEB-30	36	18	3.5	31	70	115
WEB-36	42	20	4.0	37	115	165
WEB-42	48	20	4.3	43	160	225
WEB-48	54	22	4.3	49	200	280
WEB-60	66	28	5.0	61	260	350

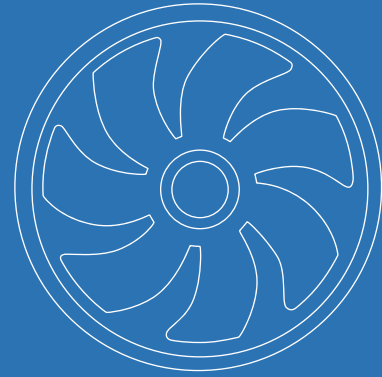
MODEL	RPM	MTR HP	AIRFLOW PERFORMANCE (CFM)				
			0" SP	0.125" SP	0.25" SP	0.50" SP	0.75" SP
WEB-24-13	825	1/3	5300	4700	3800	2200	1400
WEB-24-12	925	1/2	6200	5700	5000	4000	2600
WEB-24-34	1050	3/4	7000	6600	6000	4400	3000
WEB-24-01	1175	1	7800	7400	6900	5700	3500
WEB-30-13	570	1/3	7500	6000	3400	700	-
WEB-30-12	625	1/2	8500	7100	4400	2700	1300
WEB-30-34	725	3/4	10000	9100	7600	5100	1800
WEB-30-01	825	1	11000	10400	9300	5500	2800
WEB-36-13	425	1/3	9000	6800	3500	500	-
WEB-36-12	500	1/2	10500	8800	5900	3600	2000
WEB-36-34	575	3/4	11900	10500	8500	5500	4000
WEB-36-01	650	1	13100	11800	10200	6900	5000
WEB-36-32	750	1-1/2	15000	13500	12500	8500	5500
WEB-36-02	830	2	16500	15500	14500	11000	7000
WEB-42-34	430	3/4	14000	11500	7600	4800	3300
WEB-42-01	490	1	15400	13100	10400	6400	4600
WEB-42-32	550	1-1/2	17200	15300	12400	7900	5300
WEB-42-02	620	2	19400	17500	15600	9700	6000
WEB-42-03	700	3	22000	20500	19000	15000	8000
WEB-48-34	350	3/4	17000	12000	7000	2000	-
WEB-48-01	400	1	19100	16000	10900	6400	4000
WEB-48-32	460	1-1/2	22000	19000	14000	10000	6000
WEB-48-02	520	2	24000	22000	18000	12000	7500
WEB-48-03	590	3	27500	25000	22500	16000	9000
WEB-48-05	660	5	30500	28500	26000	21000	13000
WEB-60-02	320	2	31000	26000	16000	7000	-
WEB-60-03	370	3	35000	31000	23000	11000	-
WEB-60-05	420	5	39000	35000	29000	18000	-

*DO NOT USE FOR CONSTRUCTION

CONSULT FACTORY FOR CERTIFIED PRINTS



***Industrial Fans
& Blowers***



***OEM Solutions
& Custom Fans***



***Commercial Fans
& Dampers***



***Residential Fans &
Air Purifiers***



Commercial Fans & Dampers

Continental Fan Manufacturing Inc.
203 Eggert Road
Buffalo, New York 14215

Continental Fan Canada Inc.
12-205 Matheson Blvd E
Mississauga, Ontario L4Z 3E3

Continental Fan Manufacturing Inc.
6274 Executive Blvd.
Dayton, Ohio 45424

1-800-779-4021 • www.continentalfan.com

Distributed by:

COMMERCIAL-1510