

MUELLER - COMPRESSOR VALVES & KITS



THE INDUSTRY STANDARD

Mueller's compressor valves demonstrate a backseating design, constructed so that the stem forms a seal against a seat whether the stem is full forward or backward. This design allows complete isolation of service when the valve is either fully open or fully closed. In the intermediate position, specialized packing allows gauge and charging port caps and plugs to be accessed without refrigerants loss. Cross reference information is provided to assist in the selection process for all major compressor manufacturers in the industry.

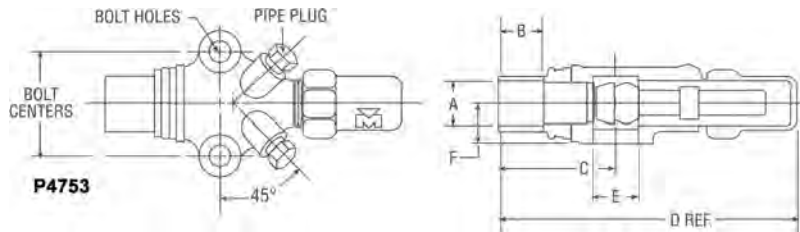
| Copeland No. | Kit | Copeland No. | Kit |
|--------------|---------|--------------|---------|
| 998-0510-04 | A 17510 | 998-0510-14 | A 17517 |
| 998-0510-05 | A 17511 | 998-0510-15 | A 17518 |
| 998-0510-06 | A 17512 | 998-0510-16 | A 17519 |
| 998-0510-07 | A 17513 | 998-0510-17 | A 17520 |
| 998-0510-09 | A 17525 | 998-0510-18 | A 17521 |
| 998-0510-10 | A 17527 | 998-0510-19 | A 17522 |
| 998-0510-11 | A 17526 | 998-0510-20 | A 17523 |
| 998-0510-12 | A 17515 | 998-0510-21 | A 17524 |
| 998-0510-13 | A 17516 | | |

ADVANTAGES:

- Complete service kit including valve body, mounting bolts, cap, and gaskets.
- Compatible with all new refrigerants and oils.
- 700 psig maximum working pressure
- All valves 100% tested.
- Recognized under component program of underwriters laboratories for use in the USA and Canada.

BRASS COMPRESSOR VALVES

Double Port - 45° Flare Type - Steel Cap

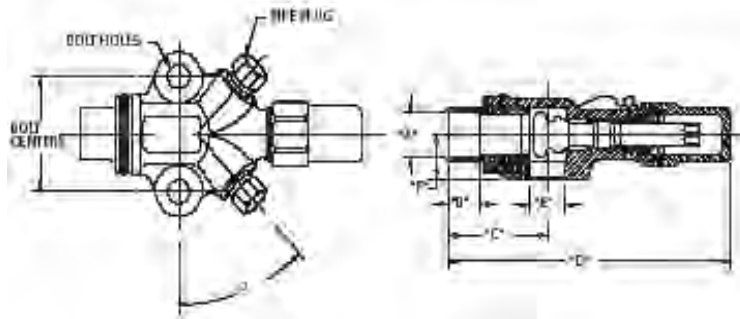


| PART NO | Kit | A | C | D | E | F | BOLT CENTERS | DIA BOLT HOLES | PIPE PLUG SIZE | FLANGE THICKNESS | Valve Wt | Kit Wt |
|---------|---------|-----|-------|---------|------|-----|--------------|----------------|----------------|------------------|----------|--------|
| A 16302 | A 17518 | 3/8 | 1-3/4 | 4-7/16 | 9/16 | 5/8 | 1-5/8 | 11/32 | 1/8 | 7/8 | 1.20 | 1.24 |
| A 16303 | A 17519 | 1/2 | 1-7/8 | 4-11/16 | 9/16 | 5/8 | 1-5/8 | 11/32 | 1/8 | 7/8 | 1.17 | 1.20 |
| A 16304 | A 17520 | 5/8 | 2 | 4-13/16 | 9/16 | 5/8 | 1-5/8 | 11/32 | 1/8 | 7/8 | 1.23 | 1.27 |

MUELLER - COMPRESSOR VALVES & KITS

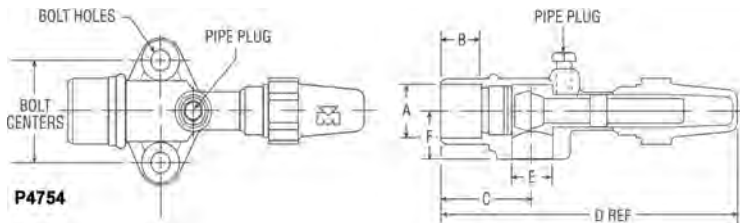
BRASS COMPRESSOR VALVES

Double Port - Solder Type - Steel Cap



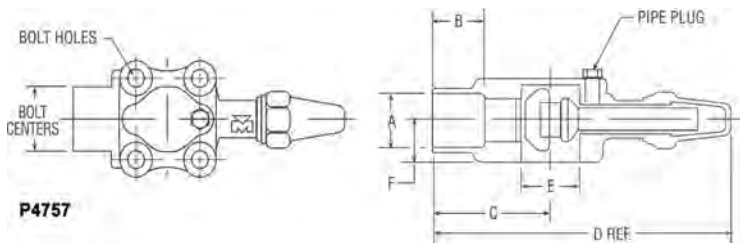
| PART NO | Kit | A | B | C | D | E | F | BOLT CENTERS | DIA BOLT HOLES | PIPE PLUG SIZE | FLANGE THICKNESS | Valve Wt | Kit Wt |
|---------|---------|-----|------|---------|---------|------|-----|--------------|----------------|----------------|------------------|----------|--------|
| A 16307 | A 17510 | 3/8 | 5/16 | 1-1/4 | 4-5/64 | 9/16 | 5/8 | 1-5/8 | 11/32 | 1/8 | 7/8 | 0.69 | 0.73 |
| A 16308 | A 17511 | 1/2 | 3/8 | 1-13/32 | 4-13/64 | 9/16 | 5/8 | 1-5/8 | 11/32 | 1/8 | 7/8 | 0.86 | 0.89 |
| A 16309 | A 17512 | 5/8 | 1/2 | 1-1/2 | 4-1/2 | 9/16 | 5/8 | 1-5/8 | 11/32 | 1/8 | 7/8 | 0.88 | 0.92 |

Straight Port - Solder Type - Plastic Cap



| PART NO | Kit | A | B | C | D | E | F | BOLT CENTERS | DIA BOLT HOLES | PIPE PLUG SIZE | FLANGE THICKNESS | Valve Wt | Kit Wt |
|---------|---------|-------|-------|---------|--------|-------|-----|--------------|----------------|----------------|------------------|----------|--------|
| A 16310 | A 17517 | 3/4 | 5/8 | 1-29/32 | 6-9/16 | 13/16 | 7/8 | 1-5/8 | 11/32 | 1/8 | 1-21/64 | 1.64 | 1.69 |
| A 16311 | A 17515 | 7/8 | 3/4 | 1-31/32 | 6-9/16 | 13/16 | 7/8 | 1-5/8 | 11/32 | 1/8 | 1-21/64 | 1.63 | 1.67 |
| A 16317 | A 17528 | 7/8 | 3/4 | 1-31/32 | 6-1/2 | 13/16 | 7/8 | 1-5/8 | 11/32 | 1/8 | 1-21/64 | 1.63 | 1.68 |
| B 32197 | A 17529 | 7/8 | 3/4 | 1-31/32 | 6-9/16 | 13/16 | 7/8 | 1-3/4 | 11/32 | 1/8 | 1-21/64 | 1.42 | 1.69 |
| A 15500 | -- | 1-1/8 | 29/32 | 2-1/16 | 6-9/16 | 13/16 | 7/8 | 1-5/8 | 11/32 | 1/8 | 1-21/64 | 1.66 | -- |
| A 16312 | A 17516 | 1-1/8 | 29/32 | 2-1/16 | 6-9/16 | 13/16 | 7/8 | 1-5/8 | 11/32 | 1/8 | 1-21/64 | 1.66 | 1.71 |
| B 33367 | A 17530 | 1-1/8 | 29/32 | 2-17/64 | 6-9/16 | 1-1/8 | 7/8 | 1-3/4 | 11/32 | 1/4 | 1-21/64 | -- | -- |

Flange Union - Solder Type - Brass Cap

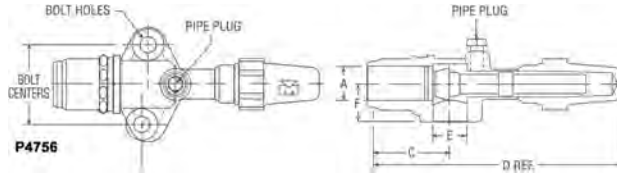


| PART NO | Kit | A | B | C | D | E | F | BOLT CENTERS | DIA BOLT HOLES | PIPE PLUG SIZE | Flange Bolt Centers | FLANGE THICKNESS | Valve Wt | Kit Wt |
|---------|---------|-------|-------|---------|---------|-------|-------|--------------|----------------|----------------|---------------------|------------------|----------|--------|
| A 16313 | -- | 3/4 | 5/8 | 2-5/16 | 7-11/32 | 1-1/4 | 1-1/4 | 2-3/4 | 17/32 | 1/8 | 1-5/8 | 1 | 3.93 | -- |
| A 16314 | A 17527 | 7/8 | 3/4 | 2-5/16 | 7-11/32 | 1-1/4 | 1-1/4 | 2-3/4 | 17/32 | 1/8 | 1-5/8 | 1 | 3.90 | 4.05 |
| A 16315 | A 17525 | 1-1/8 | 29/32 | 2-15/32 | 7-1/2 | 1-1/4 | 1-1/4 | 2-3/4 | 17/32 | 1/8 | 1-5/8 | 1 | 3.88 | 4.03 |
| A 16316 | A 17526 | 1-3/8 | 31/32 | 2-15/32 | 7-1/2 | 1-1/4 | 1-1/4 | 2-3/4 | 17/32 | 1/8 | 1-5/8 | 1 | 3.66 | 3.80 |

MUELLER - COMPRESSOR VALVES & KITS

BRASS COMPRESSOR VALVES

Straight Port - 45° Flare Type - Plastic Cap



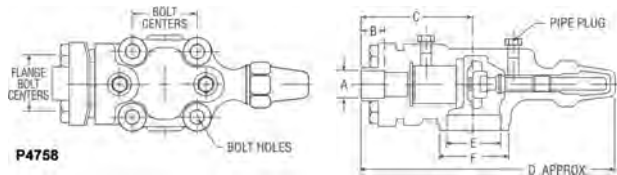
| PART NO | A | C | D | E | F | BOLT CENTERS | DIA BOLT HOLES | PIPE PLUG SIZE | FLANGE THICKNESS | Valve Wt |
|---------|-----|-------|---|-------|-----|--------------|----------------|----------------|------------------|----------|
| A 13166 | 3/4 | 2-3/8 | 7 | 13/16 | 7/8 | 1-5/8 | 11/32 | 1/8 | 1-1/4 | 1-7/8 |

4-Bolt Mounting Style - Solder Type - Flat Gasket Surface - Plastic Cap

| PART NO | Kit | A | B | C | D | E | F | BOLT CENTERS | DIA BOLT HOLES | PIPE PLUG SIZE | Valve Wt | Kit Wt |
|---------|---------|-------|--------|---------|-------|--------|--------|--------------|----------------|----------------|----------|--------|
| B 32807 | A 17532 | 1-1/8 | 29/32 | 2-23/32 | 7-5/8 | 1-9/16 | 1 | 2-1/2 | 17/32 | 1/4 | 3.88 | 4.03 |
| B 32808 | A 17533 | 1-3/8 | 31/32 | 2-23/32 | 7-5/8 | 1-9/16 | 1 | 2-1/2 | 17/32 | 1/4 | 3.66 | 3.80 |
| B 32930 | A 17534 | 1-5/8 | 1-3/32 | 2-7/8 | 7-5/8 | 1-9/16 | 1-1/32 | 2-1/2 | 17/32 | 1/4 | 3.90 | 4.05 |

CAST IRON COMPRESSOR VALVES

4-Bolt - Cast Iron Compressor Valves

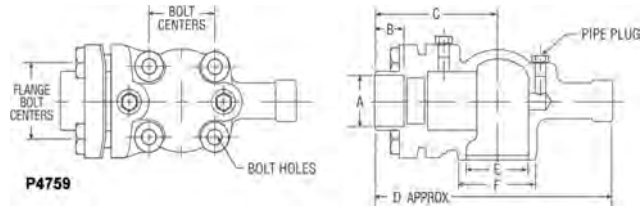


| PART NO | Kit | A | B | C | D | E | F | BOLT CENTERS | DIA BOLT HOLES | PIPE PLUG SIZE | Flange Bolt Centers | Seal Cap Material | Valve Wt | Kit Wt |
|---------|---------|-------|---------|---------|----------|---------|---------|--------------|----------------|----------------|---------------------|-------------------|----------|--------|
| B 33813 | -- | 1-3/8 | 31/32 | 4-13/32 | 9-29/32 | 2-1/8 | 2-3/4 | 2-1/2 | 17/32 | 1/4 | 2-1/8 | Cast Iron | 9.43 | -- |
| A 15246 | -- | 1-5/8 | 1-3/32 | 3-61/64 | 9-15/32 | 2-1/8 | 2-3/4 | 2-1/2 | 17/32 | 1/4 | 2-1/8 | Valox | 9.37 | -- |
| A 16321 | A 17513 | 1-5/8 | 1-3/32 | 4-19/32 | 10-3/64 | 2-1/8 | 2-3/4 | 2-1/2 | 17/32 | 1/4 | 2-1/8 | Valox | 8.72 | 8.92 |
| A 16367 | A 17524 | 1-5/8 | 1-3/32 | 5-1/4 | 11-29/32 | 2-17/32 | 3-7/32 | 3-1/16 | 11/16 | 1/4 | 3-1/16 | Valox | 18.20 | 18.61 |
| A 16496 | -- | 1-5/8 | 1-3/32 | 3-61/64 | 9-15/32 | 2-1/8 | 2-3/4 | 2-1/2 | 17/32 | 1/4 | 2-1/8 | Valox | 8.74 | -- |
| B 32337 | -- | 1-5/8 | 1-3/32 | 3-61/64 | 9-15/32 | 2-1/8 | 2-3/4 | 2-1/2 | 17/32 | 1/4 | 2-1/8 | Valox | 9.07 | -- |
| B 33770 | -- | 1-5/8 | 1-3/32 | 4-19/32 | 10-1/64 | 2-1/8 | 2-3/4 | 2-1/2 | 17/32 | 1/4 | 2-1/8 | Cast Iron | 8.46 | -- |
| B 33842 | -- | 1-5/8 | 1-3/32 | 5-1/4 | 11-29/32 | 2-17/32 | 3-7/32 | 3-1/16 | 11/16 | 1/4 | 3-1/16 | Cast Iron | 18.97 | -- |
| B 33784 | -- | 2 | 1-9/32 | 5-1/64 | 11-55/64 | 2-17/32 | 3-7/32 | 3-1/16 | 11/16 | 1/4 | 3-1/16 | Valox | 16.42 | -- |
| A 15586 | A 17535 | 2-1/8 | 1-5/16 | 5-1/16 | 11-61/64 | 2-17/32 | 3-7/32 | 3-1/16 | 11/16 | 1/4 | 3-1/16 | Valox | 18.28 | 6.69 |
| A 16324 | A 17523 | 2-1/8 | 1-5/16 | 5-1/16 | 11-61/64 | 2-17/32 | 3-7/32 | 3-1/16 | 11/16 | 1/4 | 3-1/16 | Valox | 18.28 | 18.69 |
| A 16493 | -- | 2-1/8 | 1-5/16 | 5-1/16 | 11-61/64 | 2-17/32 | 3-7/32 | 3-1/16 | 11/16 | 1/4 | 3-1/16 | Valox | 17.71 | -- |
| B 33572 | -- | 2-1/8 | 1-5/16 | 5-1/16 | 11-61/64 | 2-17/32 | 3-7/32 | 3-1/16 | 11/16 | 1/4 | 3-1/16 | Valox | 17.49 | -- |
| B 34429 | -- | 2-1/8 | 1-5/16 | 5-1/16 | 11-61/64 | 2-17/32 | 3-7/32 | 3-1/16 | 11/16 | 1/4 | 3-1/16 | Valox | 17.28 | -- |
| B 34671 | -- | 2-1/8 | 1-5/16 | 5-1/16 | 11-61/64 | 2-33/64 | 3-7/32 | 3-1/16 | 11/16 | 1/4 | 3-1/16 | Valox | 17.28 | -- |
| A 15587 | -- | 2-5/8 | 1-9/32 | 5-1/64 | 12-1/16 | 2-17/32 | 3-7/32 | 3-1/16 | 11/16 | 1/4 | 3-1/16 | Valox | 20.30 | -- |
| A 16366 | A 17522 | 2-5/8 | 1-15/32 | 6-1/2 | 15-1/8 | 3-11/32 | 4-5/32 | 3-7/8 | 11/16 | 1/4 | 3-7/8 | Cast Iron | 33.18 | 3.73 |
| B 33568 | -- | 2-5/8 | 1-9/32 | 5-1/64 | 11-29/32 | 2-17/32 | 3-7/32 | 3-1/16 | 11/16 | 1/4 | 3-1/16 | Valox | 20.23 | -- |
| B 34314 | -- | 2-5/8 | 1-15/32 | 6-1/2 | 15-1/8 | 3-11/32 | 4-5/32 | 3-7/8 | 11/16 | 1/4 | 3-7/8 | Cast Iron | 30.80 | -- |
| B 34582 | -- | 2-5/8 | 1-17/64 | 5-3/64 | 11-29/32 | 2-17/32 | 3-7/32 | 3-1/16 | 11/16 | 1/4 | 3-1/16 | Valox | -- | -- |
| B 34661 | -- | 2-5/8 | 1-15/32 | 6-1/2 | 15-1/8 | 3-11/32 | 4-5/32 | 3-7/8 | 11/16 | 1/4 | 3-7/8 | Cast Iron | 30.80 | -- |
| A 15588 | -- | 3-1/8 | 1-7/32 | 5-15/16 | 14-39/64 | 3-11/32 | 4-5/32 | 3-7/8 | 11/16 | 1/4 | 3-7/8 | Cast Iron | 33.22 | -- |
| A 16365 | A 17521 | 3-1/8 | 1-7/32 | 5-15/16 | 14-39/64 | 3-11/32 | 4-5/32 | 3-7/8 | 11/16 | 1/4 | 3-7/8 | Cast Iron | 33.22 | 33.77 |
| B 33569 | -- | 3-1/8 | 1-7/32 | 5-15/16 | 14-39/64 | 3-11/32 | 4-5/32 | 3-7/8 | 11/16 | 1/4 | 3-7/8 | Cast Iron | 32.38 | -- |
| A 17496 | -- | 3-5/8 | 2-1/16 | 7 | 16-19/64 | 3-7/8 | 4-35/64 | 4-1/4 | 11/16 | 1/4 | 4-1/4 | Cast Iron | 34.01 | -- |
| B 33788 | -- | 3-5/8 | 2-1/16 | 7 | 16-19/64 | 3-7/8 | 4-35/64 | 4-1/4 | 11/16 | 1/4 | 4-1/4 | Cast Iron | 34.01 | -- |
| B 34315 | -- | 3-5/8 | 2-1/16 | 7 | 16-19/64 | 3-7/8 | 4-35/64 | 4-1/4 | 11/16 | 1/4 | 4-1/4 | Cast Iron | 40.51 | -- |
| B 34670 | -- | 3-5/8 | 2-1/16 | 7 | 16-19/64 | 3-7/8 | 4-9/64 | 4-1/4 | 11/16 | 1/4 | 4-1/4 | Cast Iron | 40.51 | -- |
| A 15589 | -- | 4-1/8 | 1-31/32 | 7-7/32 | 17-1/2 | 4-3/8 | 5-1/8 | 4-3/16 | 13/16 | 1/4 | 4-13/16 | Cast Iron | 49.80 | -- |

MUELLER - COMPRESSOR VALVES & KITS

CAST IRON COMPRESSOR VALVES

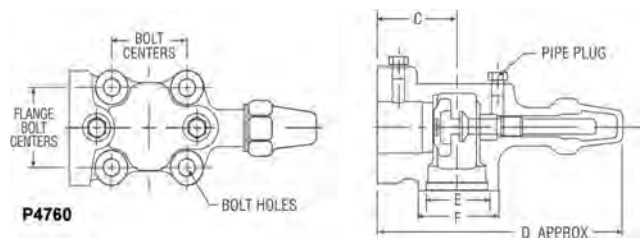
4-Bolt - Cast Iron Compressor Valves Without Flange



| PART NO | C | D | E | F | BOLT CENTERS | DIA BOLT HOLES | PIPE PLUG SIZE | Flange Bolt Centers | Seal Cap Material | Valve Wt |
|-----------|---------|----------|---------|---------|--------------|----------------|----------------|---------------------|-------------------|----------|
| B 33793 | 3-9/32 | 10-11/64 | 2-17/32 | 3-7/32 | 3-1/16 | 11/16 | 1/4 | 3-1/16 | Valox | 12.58 |
| B 33794 | 3-25/32 | 12-7/16 | 3-11/32 | 4-5/32 | 3-7/8 | 11/16 | 1/4 | 3-7/8 | Cast Iron | 22.05 |
| B 34183 | 2-11/16 | 8-3/32 | 2-1/8 | 2-3/4 | 2-1/2 | 17/32 | 1/4 | 2-1/8 | Valox | 6.91 |
| B 34497 | 3-63/64 | 13-1/4 | 3-7/8 | 4-35/64 | 4-1/4 | 11/16 | 1/4 | 4-1/4 | Cast Iron | 34.00 |
| B 34498 | 3-9/32 | 10-1/8 | 2-17/32 | 3-7/32 | 3-1/16 | 11/16 | 1/4 | 3-1/16 | Valox | 17.28 |
| B 34715 | 3-25/32 | 13 | 3-11/32 | 4-5/32 | 3-7/8 | 11/16 | 1/4 | 3-7/8 | Steel | 22.05 |
| B 34761 | 3-9/32 | 10-11/64 | 2-17/32 | 3-1/32 | 3-1/16 | 11/16 | 1/4 | 3-1/16 | Valox | 13.00 |
| B 34929** | 4-9/16 | 14-53/64 | 4-3/8 | 5-1/8 | 4-13/16 | 13/16 | 1/4 | 4-13/16 | Cast Iron | 37.00 |
| B 35049 | 3-9/32 | 10-1/8 | 2-17/32 | 3-7/32 | 3-1/16 | 11/16 | 1/4 | 3-1/16 | Valox | 12.97 |

** Does not include coupling and bolts

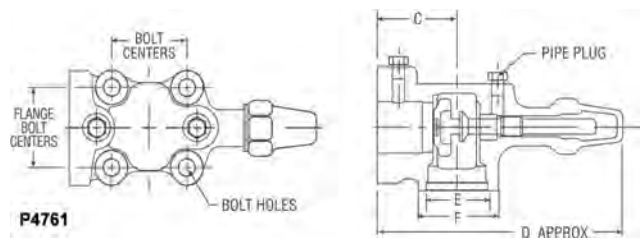
4-Bolt - Cast Iron Flanges



| PART NO | A | B | C | D | E | F | BOLT CENTERS | DIA BOLT HOLES | PIPE PLUG SIZE | Flange Bolt Centers | Valve Wt |
|----------|-------|---------|-------|----------|---------|--------|--------------|----------------|----------------|---------------------|----------|
| B 34987* | 2-5/8 | 1-15/32 | 6-1/2 | 12 35/64 | 3-11/32 | 4-5/32 | 3-7/8 | 11/16 | 1/4 | 3-7/8 | 28.50 |
| B 34988* | 3-5/8 | 2-1/16 | 7 | 13 39/64 | 3-7/8 | 4-9/16 | 4-1/4 | 11/16 | 1/4 | 4-1/4 | 33.50 |

* Does not include Seat and Stem

Ammonia Valves



| PART NO | C | D | E | F | BOLT CENTERS | DIA BOLT HOLES | Flange Bolt Centers | Seal Cap Material | Valve Wt |
|---------|---------|----------|---------|--------|--------------|----------------|---------------------|-------------------|----------|
| B 35308 | 3-9/32 | 10-11/64 | 2-17/32 | 3-7/32 | 3-1/16 | 11/16 | 3-1/16 | Valox | 13.02 |
| B 35358 | 3-25/32 | 12-7/16 | 3-11/32 | 4-5/32 | 3-7/8 | 11/16 | 3-1/16 | Cast Iron | 22.05 |

Compressors,
Chillers, Condensers

Motors

Electrical

Heating
Components

Indoor Air
Quality

Thermostats

Oils &
Chemicals

Accessories, Supplies
& Commodities

Tools &
Instruments

Refrigeration

MUELLER - COMPRESSOR VALVES & KITS

CAST IRON COMPRESSOR VALVES

Ammonia Valves

Torques To Seal (ft. - lbs.)

| PART NO | Front Seat | Back Seat | Pack Gland | Pipe Plug | Plastic Cap | Brass Cap | Steel Cap | Cast Iron |
|---------|------------|-----------|------------|-----------------------|-------------|-----------|------------|------------|
| A 13166 | | | | | | | | |
| A 15085 | 22 - 40 | 25 - 45 | 15 - 25 | 2 - 3 Threads Exposed | Hand Tight | 40 - 50 | NA | NA |
| A 15246 | 45 - 65 | 45 - 65 | 25 - 35 | 2 - 3 Threads Exposed | Hand Tight | NA | NA | NA |
| A 15500 | 22 - 40 | 25 - 45 | 15 - 25 | 2 - 3 Threads Exposed | Hand Tight | NA | NA | NA |
| A 15586 | 45 - 65 | 45 - 65 | 35 - 45 | 2 - 3 Threads Exposed | Hand Tight | NA | NA | Hand Tight |
| A 15587 | 45 - 65 | 45 - 65 | 35 - 45 | 2 - 3 Threads Exposed | Hand Tight | NA | NA | Hand Tight |
| A 15588 | 45 - 70 | 45 - 65 | 55 - 70 | 2 - 3 Threads Exposed | Hand Tight | NA | NA | Hand Tight |
| A 15589 | Max 70 | | | | | | | |
| A 16302 | 14 - 18 | 14 - 18 | 8 - 12 | 2 - 3 Threads Exposed | NA | 20 - 30 | 3 - 5 | NA |
| A 16303 | 14 - 18 | 14 - 18 | 8 - 12 | 2 - 3 Threads Exposed | NA | 20 - 30 | 3 - 5 | NA |
| A 16304 | 14 - 18 | 14 - 18 | 8 - 12 | 2 - 3 Threads Exposed | NA | 20 - 30 | 3 - 5 | NA |
| A 16307 | 14 - 18 | 14 - 18 | 8 - 12 | 2 - 3 Threads Exposed | NA | 20 - 30 | 3 - 5 | NA |
| A 16308 | 14 - 18 | 14 - 18 | 8 - 12 | 2 - 3 Threads Exposed | NA | 20 - 30 | 3 - 5 | NA |
| A 16309 | 14 - 18 | 14 - 18 | 8 - 12 | 2 - 3 Threads Exposed | NA | 20 - 30 | 3 - 5 | NA |
| A 16310 | 22 - 40 | 25 - 45 | 15 - 25 | 2 - 3 Threads Exposed | Hand Tight | NA | NA | NA |
| A 16311 | 22 - 40 | 25 - 45 | 15 - 25 | 2 - 3 Threads Exposed | Hand Tight | NA | NA | NA |
| A 16312 | 22 - 40 | 25 - 45 | 15 - 25 | 2 - 3 Threads Exposed | Hand Tight | NA | NA | NA |
| A 16313 | 30 - 40 | 22 - 45 | 15 - 25 | 2 - 3 Threads Exposed | Hand Tight | 40 - 50 | NA | NA |
| A 16314 | 30 - 40 | 22 - 45 | 15 - 25 | 2 - 3 Threads Exposed | Hand Tight | 40 - 50 | NA | NA |
| A 16315 | 30 - 40 | 22 - 45 | 15 - 25 | 2 - 3 Threads Exposed | Hand Tight | 40 - 50 | NA | NA |
| A 16316 | 30 - 40 | 22 - 45 | 15 - 25 | 2 - 3 Threads Exposed | Hand Tight | 40 - 50 | NA | NA |
| A 16317 | 22 - 40 | 25 - 45 | 15 - 25 | 2 - 3 Threads Exposed | Hand Tight | NA | NA | NA |
| A 16321 | 45 - 65 | 45 - 65 | 25 - 35 | 2 - 3 Threads Exposed | Hand Tight | NA | NA | Hand Tight |
| A 16324 | 45 - 65 | 45 - 65 | 35 - 45 | 2 - 3 Threads Exposed | Hand Tight | NA | NA | Hand Tight |
| A 16365 | 45 - 70 | 45 - 65 | 55 - 70 | 2 - 3 Threads Exposed | Hand Tight | NA | NA | Hand Tight |
| A 16366 | 45 - 70 | 45 - 65 | 55 - 70 | 2 - 3 Threads Exposed | Hand Tight | NA | NA | Hand Tight |
| A 16367 | 45 - 65 | 45 - 65 | 35 - 45 | 2 - 3 Threads Exposed | Hand Tight | NA | NA | Hand Tight |
| A 16493 | 45 - 65 | 45 - 65 | 35 - 45 | 2 - 3 Threads Exposed | Hand Tight | NA | NA | Hand Tight |
| A 16496 | 45 - 65 | 45 - 65 | 25 - 35 | 2 - 3 Threads Exposed | Hand Tight | NA | NA | Hand Tight |
| A 17496 | Max 70 | | | | | | | |
| B 32197 | 22 - 40 | 25 - 45 | 15 - 25 | 2 - 3 Threads Exposed | Hand Tight | 40 - 50 | NA | NA |
| B 32337 | 45 - 65 | 45 - 65 | 25 - 35 | 2 - 3 Threads Exposed | Hand Tight | NA | NA | Hand Tight |
| B 32807 | 22 - 40 | 25 - 45 | 10 - 15 | 2 - 3 Threads Exposed | Hand Tight | NA | NA | Hand Tight |
| B 32808 | 22 - 40 | 25 - 45 | 10 - 15 | 2 - 3 Threads Exposed | Hand Tight | NA | NA | Hand Tight |
| B 32930 | 22 - 40 | 25 - 45 | 10 - 15 | 2 - 3 Threads Exposed | Hand Tight | NA | NA | Hand Tight |
| B 33367 | 22 - 40 | 25 - 45 | 15 - 25 | 2 - 3 Threads Exposed | Hand Tight | NA | NA | NA |
| B 33568 | 45 - 65 | 45 - 65 | 35 - 45 | 2 - 3 Threads Exposed | Hand Tight | NA | NA | Hand Tight |
| B 33569 | 45 - 70 | 45 - 65 | 55 - 70 | 2 - 3 Threads Exposed | Hand Tight | NA | NA | Hand Tight |
| B 33572 | 45 - 65 | 45 - 65 | 35 - 45 | 2 - 3 Threads Exposed | Hand Tight | NA | NA | Hand Tight |
| B 33770 | 45 - 65 | 45 - 65 | 25 - 35 | 2 - 3 Threads Exposed | Hand Tight | NA | NA | Hand Tight |
| B 33771 | 45 - 65 | 45 - 65 | 35 - 45 | 2 - 3 Threads Exposed | Hand Tight | NA | NA | Hand Tight |
| B 33784 | 45 - 65 | 45 - 65 | | 2 - 3 Threads Exposed | Hand Tight | NA | NA | Hand Tight |
| B 33788 | 50 - 70 | 50 - 65 | | 2 - 3 Threads Exposed | NA | NA | Hand Tight | Hand Tight |
| B 33793 | 45 - 65 | 45 - 65 | | 2 - 3 Threads Exposed | Hand Tight | NA | NA | Hand Tight |
| B 33794 | Max 70 | Max 65 | | 2 - 3 Threads Exposed | NA | NA | Hand Tight | Hand Tight |
| B 33813 | 45 - 65 | 45 - 65 | | 2 - 3 Threads Exposed | Hand Tight | NA | NA | Hand Tight |
| B 33842 | 45 - 65 | 45 - 65 | 35 - 45 | 2 - 3 Threads Exposed | Hand Tight | NA | NA | Hand Tight |
| B 34183 | 45 - 65 | 45 - 65 | 25 - 35 | 2 - 3 Threads Exposed | Hand Tight | NA | NA | Hand Tight |
| B 34314 | 45 - 65 | 45 - 65 | | 2 - 3 Threads Exposed | NA | NA | Hand Tight | Hand Tight |
| B 34315 | 45 - 65 | 45 - 65 | | 2 - 3 Threads Exposed | NA | NA | Hand Tight | Hand Tight |
| B 34429 | 45 - 65 | 45 - 65 | | 2 - 3 Threads Exposed | Hand Tight | NA | NA | Hand Tight |
| B 34497 | 50 - 70 | 50 - 65 | | 2 - 3 Threads Exposed | NA | NA | Hand Tight | Hand Tight |
| B 34498 | 45 - 65 | 45 - 65 | | 2 - 3 Threads Exposed | Hand Tight | NA | NA | Hand Tight |
| B 34582 | 45 - 65 | 45 - 65 | | 2 - 3 Threads Exposed | Hand Tight | NA | NA | Hand Tight |
| B 34661 | 45 - 65 | 45 - 65 | | 2 - 3 Threads Exposed | NA | NA | Hand Tight | Hand Tight |
| B 34670 | 485 - 65 | 45 - 65 | | 2 - 3 Threads Exposed | NA | NA | Hand Tight | Hand Tight |
| B 34671 | 45 - 65 | 45 - 65 | | 2 - 3 Threads Exposed | Hand Tight | NA | NA | Hand Tight |
| B 34715 | Max 70 | Max 65 | | 2 - 3 Threads Exposed | NA | NA | Hand Tight | Hand Tight |
| B 34929 | 50 - 70 | 50 - 65 | | 2 - 3 Threads Exposed | NA | NA | NA | Hand Tight |
| B 34987 | | | | | NA | NA | NA | NA |
| B 34988 | | | | | NA | NA | NA | NA |
| B 35049 | 45 - 65 | 45 - 65 | | 2 - 3 Threads Exposed | Hand Tight | NA | NA | NA |
| B 35308 | 45 - 65 | 45 - 65 | | 2 - 3 Threads Exposed | Hand Tight | NA | NA | NA |
| B 35358 | 45 - 65 | 45 - 65 | | 2 - 3 Threads Exposed | Hand Tight | NA | NA | NA |