

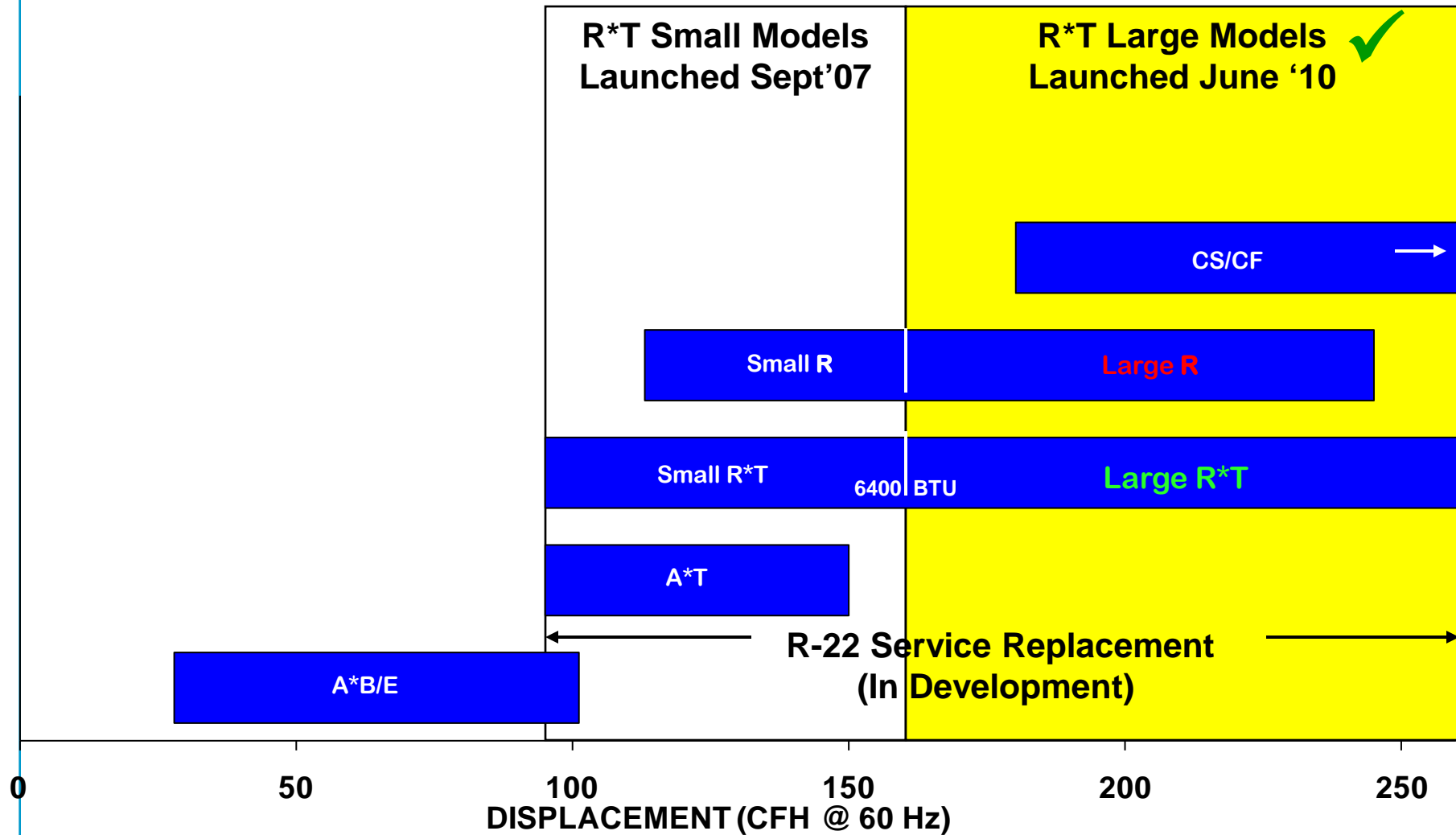
*R*T Large Model Launch*

August 2010




EMERSON[™]
Climate Technologies

Copeland Hermetic Reciprocating Products Large R*T Model Launch



Large R*T Features & Benefits

Features

- Suction Gas Management, High Flow Valving, High Efficiency Motors
- Suction Muffler, Discharge System, Shell/Suspension Design
- Robust Gaskets & Suspension, Suction System Arrangement



Benefits

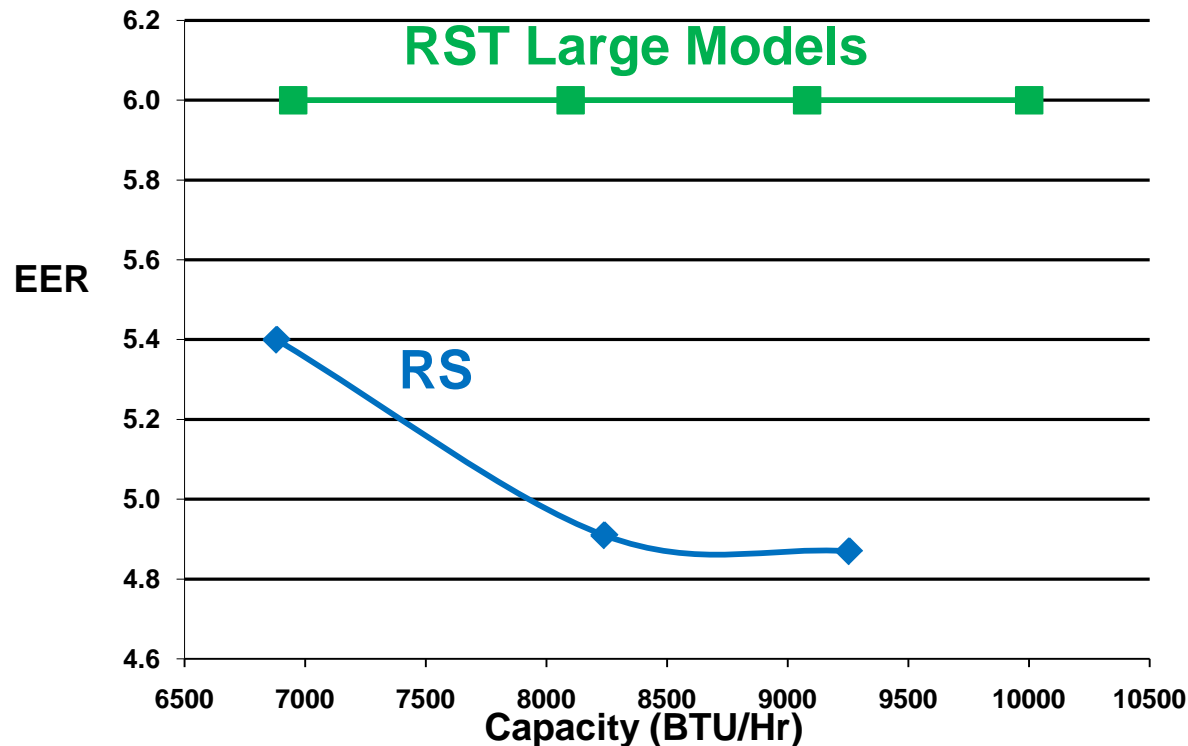
- 1 10 To 25% EER Improvement
- 2 Up To 5 dBA Sound Reduction
- 3 Improved Reliability

Large R^*T Efficiency

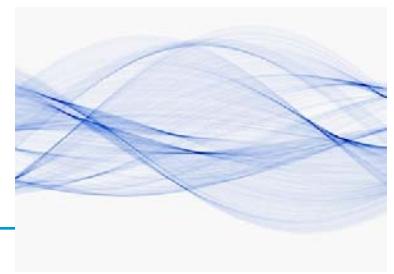


1 Step-Change Improvement In Efficiency

- 10 – 25% Increase In Compressor Efficiency (Model Specific)
- Helps Achieve Energy Regulations / Ratings
- Cost Effective Way To Achieve Energy Savings Vs. Modulation
- More Efficient Than Equivalent 2 Cylinder CS Product

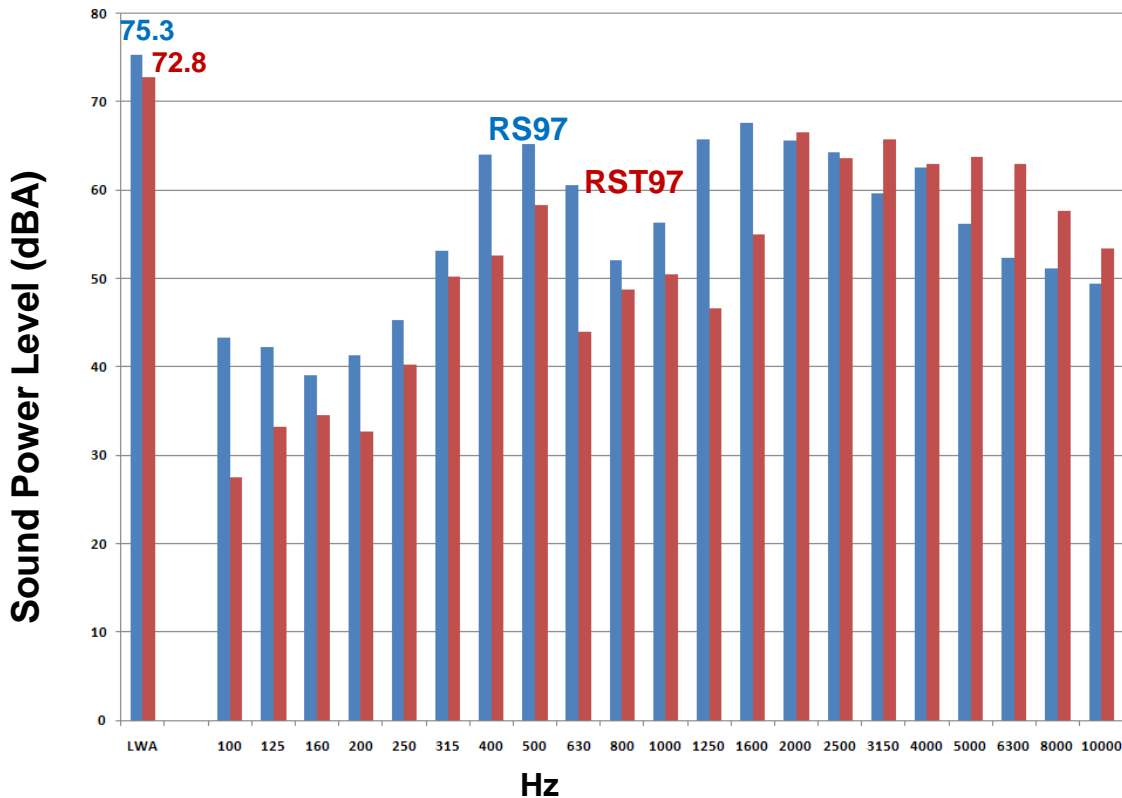


Large R*T Sound



2 Reduced Sound

– Up To 5 dBA Overall Sound Reduction (Model Specific)



- Enhances Operating Environment
- Ideal Solution For Sound-Sensitive Applications
- Greater Flexibility For Equipment Location
- May Eliminate Costly Sound Proofing Devices

3 dBA Reduction = 50% Less Compressor Noise!

Large R^*T Reliability



3 Improved Reliability

- Superior Liquid Handling Capability
 - 3.5 lb Charge Limit
- Internal Protectors Provide Better Loss Of Charge Protection
- IPR Valve Can Eliminate Pressure Controls

↓ Line Returns / Infant Failures

+ ↓ Field Returns / Warranty Costs

+ ↓ Maintenance Expenses

= ↓ Total Cost Of Ownership

Improves End Customer Satisfaction!

Cross Reference

RST Models (11 Total)

R*T Model	Existing R Model	Existing C Model	Voltage	PH	Hz
R-404A Medium Temp Models					
RST70C1E-PFV	RS70C1E-PFV	CS07KQE-PFV	208/230	1	60
None	RS70C1E-PFJ		265	1	60
None		CS07KQE-PFZ	220/240	1	50
RST70C1E-TF5	RS70C1E-TFC	CS07KQE-TF5	200/230	3	60
None	RS70C1E-TFD		460	3	60
RST80C1E-PFA	RS80C*E-CAA		115	1	60
RST80C1E-PFV	RS80C*E-CAV	CS08KQE-PFV	208/230	1	60
RST80C1E-PFZ	RS80C*E-CAZ	CS08KQE-PFZ	220/240	1	50
RST80C1E-TF5	RS80C*E-TF5		200/230	3	60
None	RS86C1E-PFJ		265	1	60
None	RS97C*E-CAA		115	1	60
RST97C1E-PFV	RS97C*E-CAV, RS86C*E-PFV		208/230	1	60
RST97C1E-PFZ	RS97C*E-CAZ		220/240	1	50
RST97C1E-TF5	RS97C*E-TFC		200/230	3	60
RST10K1E-PFV		CS10K6E-PFV	208/230	1	60
RST10K1E-TF5		CS10K6E-TF5	200/230	3	60

Cross Reference

RFT & RRT Models (10 Total)

R*T Model	Existing R Model	Voltage	PH	Hz
R-404A Low Temp Models				
RFT42C1E-PFA	RF4*C*E-CAA	115	1	60
RFT42C1E-PFV	RF4*C*E-CAV	208/230	1	60
RFT42C1E-PFZ	RF4*C*E-CAZ	220/240	1	50
R-134a Low Temp Models				
RFT18C1E-PFA	RF18C*E-IAA	115	1	60
None	RF18C*E-IAV	208/230	1	60
None	RF18C2E-IAZ	220/240	1	50
R-134a High Temp Models				
RRT81C1E-PFA	RR81C*E-IAA	115	1	60
RRT81C1E-PFV	RR81C*E-IAV	208/230	1	60
RRT81C1E-PFZ	RR81C*E-IAZ	220/240	1	50
RRT10K1E-PFA	RR10K2E-CAA, RS54C*E-IAA	115	1	60
RRT10K1E-PFV	RR10K*E-CAV, RS54C*E-IAV	208/230	1	60
RRT10K1E-PFZ	RR10K*E-CAZ	220/240	1	50

Condensing Unit Cross Reference – Units With Large R Compressors

Current Model	New Model	Current Compressor
FTAM-A075	M2FM-0075	RS54
FTEM-A075	M2EM-0075	
FTAM-A074	M2FM-0074	
FJAM-A125	FJAF-0125	RS70
FJWM-C125	FJWF-C125	
FJAL-A074	M4FL-0074	RST80
FJAF-A101	FJAF-0108	
FJAL-A101	FJAF-0108	
FJAM-A126	FJAF-0126	
FJEL-A101	FJEF-0101	
FJWL-C101	FJWL-C105	
FJWM-C126	FJWF-C126	
FJAF-A100	FJAF-B100	RS97
FJAL-A100	FJAF-B100	
FJCL-A100	FJCL-B100	
FEAF-0100	FEAF-A100	
FJAF-A125	FJAF-0130	

Current Model	New Model	Current Compressor
FTAL-A050	M2FL-0050	RF18
FTAF-A056	M2FF-0056	
FJAL-A094	M4FL-0094	RF42
FJAL-A102	FJAL-0105	
FJEL-A102	FJEL-0105	
FEAL-0090	M4CL-0090	RR10
FTAH-A100	FTAH-C100	
FTAH-B100	FTAH-C100	
FTEH-B100	M2EH-0090	RR81
FTAH-A075	M2FH-0075	
FTEH-A075	M2EH-0075	
FTEH-B075	M2EH-0075	
FRAH-A074	M2CH-0074	
FTAH-A074	M2FH-0074	
FTAH-B074	M2FH-0074	
FTWH-C074	M2WH-C074	