

Sheet Metal Hammers

One-piece steel

One-piece forged, I-beam construction. Full-polished heads with beveled face and pein are corrosion resistant. Hammer sections are individually hardened and tempered for strength and resiliency.



Most Popular!

Easily the most popular choice of sheet metal professionals worldwide, the Malco No. SH3 Setting Hammers leather grip conforms a permanent bond between the users hand for ultimate comfort and ease of use.

SH3
18 oz. (510 g.)

Leather Gripped Setting Hammer

*Grip is protected with a durable lacquer coating.
Leather conforms to hand over time.
Easily, Malco's most popular setting hammer.*

Vinyl Gripped Setting Hammer

Molded-on vinyl grips minimize recoil and offer excellent comfort, non-slip gripping and durability.



SH3V
18 oz. (510 g.)

Leather Gripped Riveting Hammer

*Grip is protected with a durable lacquer coating.
Leather conforms to hand over time.*



RH4
12 oz. (340 g.)

Vinyl Gripped Riveting Hammer

Molded-on vinyl grips minimize recoil and offer excellent comfort, non-slip gripping and durability.



RH4V
12 oz. (340 g.)

New!

Dead Blow Hammer

One piece construction of weather-resistant, urethane compound ensures long service life.

Non-Marring • Non-Sparking • Non-Recoiling



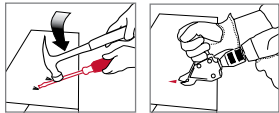
- Steel shot inside head absorbs impact to prevent recoil.
- Excellent for working copper, other soft metals and hardened sheet steel including ductwork and auto body panels.
- Flanged handle butt for a more secure grip.

DB1
17 oz. (482 g.)

Specifications

Catalog Number	Description	Head Weight oz. (g)	Head Length in. (mm)	Face Size in. (mm)	O/A Length in. (mm)
SH3	Leather Gripped Sheet Metal Hammer	18 (510)	5-1/2 (140)	7/8 (22.2)	11-3/4 (298)
SH3V	Vinyl Gripped Setting Hammer	18 (510)	5-1/2 (140)	7/8 (22.2)	11-3/4 (298)
RH4	Leather Gripped Riveting Hammer	12 (340)	4-7/8 (124)	3/4 (19.1)	11 (279)
RH4V	Vinyl Gripped Riveting Hammer	12 (340)	4-7/8 (124)	3/4 (19.1)	11 (279)
DB1	Dead Blow Hammer	17 (482)	3-1/2 (89)	1-1/4 (32)	11 (279)

Hammers and Duct Ripper



Rip Starter Hole

Insert TurboShear or metal cutting snip

Handled Duct Ripper

Specially angled ground tip easily punctures and rips duct to the desired length starting hole.

Hardened tip is ground on both sides to create 2 cutting edges for long, useful life. Cutting edges are aligned with shaft flats for large striking surfaces.



CDR

Corrosion resistant blade, cushioned grip and a hang hole for storage complete this handy tool.

Claw Hammers

Vinyl Grippled One-Piece Steel



16SCV

One-piece forged, I-beam construction. Full polished head with beveled face. Comfortable, non-slip vinyl grip.

Shinglers Hammer

Vinyl Grippled One-Piece Steel



SHV

Milled face and 1-13/16" (46 mm) cutting edge with stop gauge and retractable blade. One-piece forged I-beam construction, molded-on vinyl grip and leather safety strap.

Claw Hammers

Leather Grippled One-Piece Steel



20SC

One-piece forged, I-beam construction. Full polished head with beveled face.

Engineers Hammer

Wood Handled



SLH250

Double faced sledge type head. Black painted finish with polished faces and bevels. Fits easily in tool box! Fine grained wood handle.

Claw Hammers

Fiberglass Handled



16CCF

Black paint and polished finish with chamfered edges and beveled face. Fiberglass minimizes recoil and vinyl grip adds comfort.

Specifications

Catalog Number	Description	Claw	Head Weight oz. (g)	Head Length in. (mm)	Cutting Edge in. (mm)	Face Size in. (mm)	O/A Length in. (mm)	Nominal Length in. (mm)	Net Weight oz. (g)
CDR	Duct Ripper	—	—	—	—	—	—	9-1/2 (241)	5 (147)
SHV	Vinyl Grippled Shinglers Hammer	—	—	—	1-13/16 (46.0)	—	—	12-1/2 (318)	—
16SCV	Vinyl Grippled Claw Hammer	Straight	16 (454)	4-7/8 (124)	—	1-1/16 (27.0)	—	12-1/2 (318)	—
20SCV	Vinyl Grippled Claw Hammer	Straight	20 (567)	5-5/8 (143)	—	1-3/16 (30.2)	—	2-1/2 (318)	—
16CC	Leather Grippled Claw Hammer	Curved	16 (454)	4-1/4 (108)	—	1-1/16 (27.0)	—	12-1/2 (318)	—
16SC	Leather Grippled Claw Hammer	Straight	16 (454)	4-7/8 (124)	—	1-1/16 (27.0)	—	12-1/2 (318)	—
20CC	Leather Grippled Claw Hammer	Curved	20 (567)	5 (127)	—	1-3/16 (30.2)	—	12-1/2 (318)	—
20SC	Leather Grippled Claw Hammer	Straight	20 (567)	5-5/8 (143)	—	1-3/16 (30.2)	—	12-1/2 (318)	—
16CCF	Fiberglass Handled Claw Hammer	Curved	16 (454)	5-1/4 (133)	—	1 (25.4)	—	13 (330)	—
16SCF	Fiberglass Handled Claw Hammer	Straight	16 (454)	5-1/2 (140)	—	1 (25.4)	—	13 (330)	—
20SCF	Fiberglass Handled Claw Hammer	Straight	20 (567)	6 (152)	—	1-1/16 (27.0)	—	13 (330)	—
SLH250	Wood Handled Engineers Hammer	—	40 (1,134)	6 (152)	—	1-5/8 (41.3)	4 (102)	15-1/2 (394)	—

Replacement Parts for SHV

SHB	Replacement Blade
-----	-------------------