



### Features and Benefits

Designed for commercial freezers and refrigerators, Paragon® Commercial Defrost Controls have been reliably providing automatic defrost capability for decades. They accommodate various types of defrost systems including electric defrost heaters, hot gas and compressor off cycle.

- Time initiated; temperature, pressure, or time terminated models available
- High-amp switch contacts, 40 amps, 2 HP
- Positive slider bar switch design assures positive electrical contact and wipes the contact surface of contaminants
- Temperature or Pressure Terminated models are designed for defrost termination using an external temperature or pressure device
- Safety back-up – mechanical time-driven defrost termination
- Heavy-duty synchronous design drive motor
- Choice of three contact arrangements
- Adjustable frequency of defrost initiation from 1 to 6 cycles per day with a minimum of 4 hours between successive operations
- Adjustable back-up defrost termination from 4 to 110 minutes in 2 minute increments
- Heavy-duty steel enclosure with knockouts (on the bottom, back and sides) and hasp and staple padlock

### As Easy As 1 – 2 – 3

#### 1. Set Time

Rotate knob counter-clockwise to desired time.

#### 2. Set Defrost

Insert pin(s) to desired defrost time(s) on outer dial.

#### 3. Set Defrost Duration

Move copper pointer to desired duration of defrost time on inner dial.

Install our Commercial Defrost Controls today to understand why Paragon® is Simply the Right Choice™ in Defrost Timers.

An ISO 9001 – 2008 Certified Company

**1** Year  
Limited  
Warranty

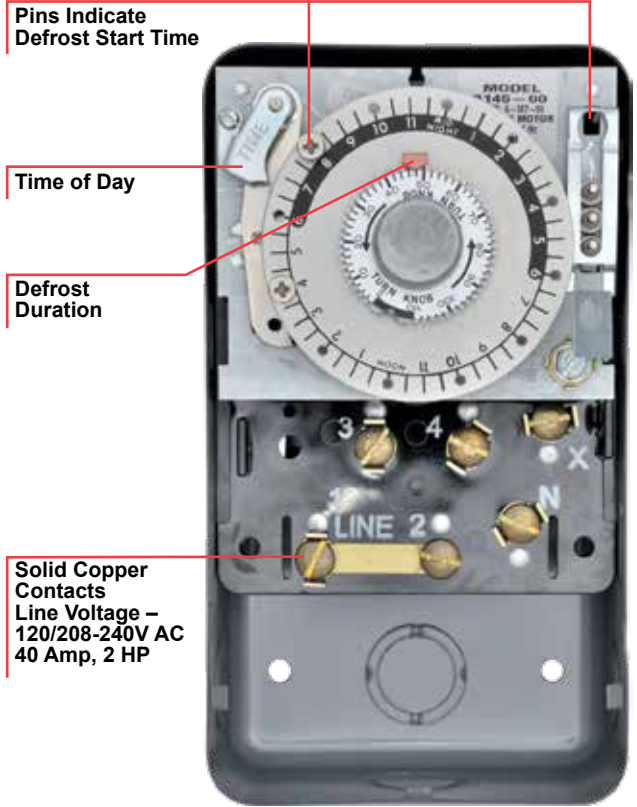


8000 Series

MECHANICAL DEFROST TIMER

Ordering Information

Model Number		Time Initiated, Time Terminated	Time Initiated, Temperature or Pressure Terminated
120V AC	208/240V AC		
8041-00	8041-20	•	
8045-00	8045-20	•	
8047-00	8047-20	•	
8141-00	8141-20		•
8143-00	8143-20		•
8145-00	8145-20		•



8040 Series Specifications

Uni-Line Part No.	Volts 60 Hz	Description	Switch arrangement contacts 2-4	Switch arrangement contacts 1-3	Switch arrangement contacts 3-N	Adj. length of defrost
8041-00	120	For Electric Heat Defrosting (Auxiliary Contact Models), Bracket available	Closed	Open	Closed	4-110 Min.
8041-20	208-240	For Electric Heat Defrosting (Auxiliary Contact Models), 50 Hz available	Closed	Open	Closed	4-110 Min.
8045-00	120	For Electric Heat, Hot Gas, or Compressor Shutdown Defrosting, Bracket available	Closed	Open	None	4-110 Min.
8045-20	208-240	For Electric Heat, Hot Gas, or Compressor Shutdown Defrosting, Bracket and 50 Hz available	Closed	Open	None	4-110 Min.
8047-00	120	For Electric Heat Defrosting (Auxiliary Contact Models)	Open	Open	Closed	4-110 Min.
8047-20	208-240	For Electric Heat Defrosting (Auxiliary Contact Models), 50 Hz available	Open	Open	Closed	4-110 Min.

8140 Series Specifications

Uni-Line Part No.	Volts 60 Hz	Normal Position of Contacts During Refrigeration Cycle/Contact 3-N	Normal Position of Contacts During Refrigeration Cycle/Contact 1-3	Normal Position of Contacts During Refrigeration Cycle/Contact 2-4	Comments
8141-00	120	Closed	Open	Closed	Bracket available and 50 Hz
8141-20	208-240	Closed	Open	Closed	Bracket available and 50 Hz
8143-00	120	Open	Closed	Open	Bracket available
8143-20	208-240	Open	Closed	Open	Bracket available
8145-00	120	None	Open	Closed	Bracket available and 50 Hz
8145-20	208-240	None	Open	Closed	Bracket available and 50 Hz

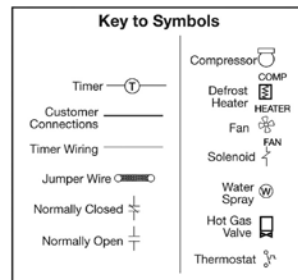
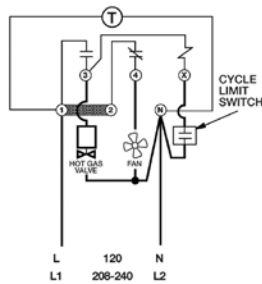
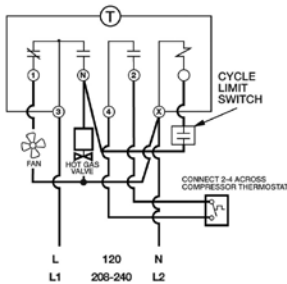


### Applications and Wiring Diagrams

## WIRING DIAGRAMS FOR 8140 SERIES HOT GAS DEFROSTING

MODELS 8143-00 AND 8143-20

MODELS 8145-00, 8145-20 AND E357-00

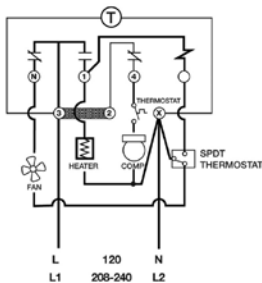


Wiring using 120V or 240V single phase line hot gas solenoid valve voltage common to timer. Refrigeration Cycle: Fan ON, hot gas solenoid valve closed, compressor ON. Defrost Cycle: Fan OFF, hot gas solenoid valve open, compressor ON.

Wiring using 120V or 240V single phase line with compressor thermostat closed during defrost.

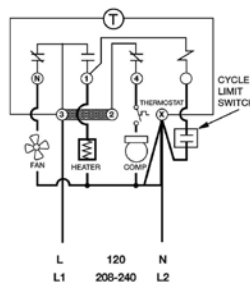
## ELECTRIC HEAT DEFROSTING

MODELS 8141-00 AND 8141-20



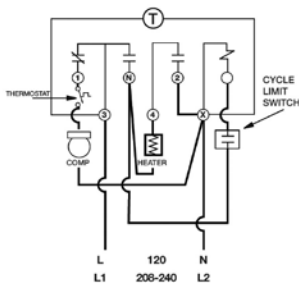
Wiring using differential of SPDT thermostat to delay fan after defrosting.

MODELS 8141-00 AND 8141-20



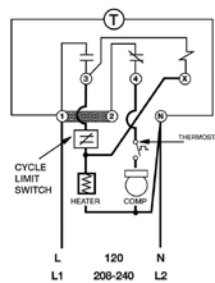
Wiring using 120V or 240V single phase line with auxiliary fan circuit.

MODELS 8143-00 AND 8143-20



Wiring using 240V single phase line breaking both sides of heater circuit.

MODELS 8145-00 AND 8145-20



Normally closed thermostat used with defrost heater. Wiring using 120V or 240V single phase line compressor voltage common to timer.