

Model 0014 Cartridge Circulator

The High Velocity series Taco 0014 cartridge circulator is designed for quiet, efficient operation in medium head / medium flow applications on large residential / light commercial systems. Ideal for hydronic heating, radiant heating, chilled water cooling and open loop domestic fresh water systems. Its unique field-serviceable cartridge contains all moving parts. Replacing the cartridge rebuilds the circulator. With no mechanical seal, the self-lubricating, maintenance free design provides unmatched reliability. Compact and lightweight, with excellent performance characteristics, the 0014 is ideal for high efficiency jobs where space is a premium. Available in Cast Iron or Stainless Steel construction.



Low-Lead
Compliant



Submittal Data Information Model 0014 Cartridge Circulator

Submittal Data # 101-065
Supersedes: 06/27/13

Effective: 01/12/15

Features

- High Velocity performance
— Compact design
- Quiet, efficient operation
- Direct drive - Low power consumption
- Unique replaceable cartridge design
— Field serviceable
- Self lubricating
- No mechanical seal
- Unmatched reliability
— Maintenance free
- Universal flange to flange dimensions
- Cast Iron or Stainless Steel construction

Materials of Construction

Casing (Volute):.....Cast Iron or Stainless Steel
Stator Housing:.....Aluminum
Cartridge:.....Stainless Steel
Impeller:.....Non-Metallic
Shaft:.....Ceramic
Bearings:.....Carbon
O-Ring & Gaskets:..EPDM

Model Nomenclature

F – Cast Iron, Flanged
SF – Stainless Steel, Flanged

Performance Data

Max. Flow: 32 GPM
Max. Head: 22 Feet
Min. Fluid Temperature: 40°F (4°C)
Max. Fluid Temperature: 230°F (110°C)
Max. Working Pressure: 150 psi
Connection Sizes:
3/4", 1", 1-1/4", 1-1/2" Flanged

Certifications & Listings

UL US LISTED FOR INDOOR USE ONLY

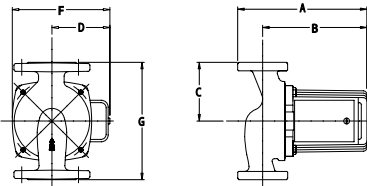
NSF Low-Lead Compliant
Certified to NSF/ANSI 372

Application

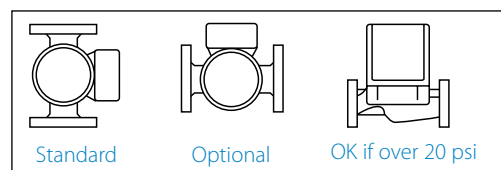
The Taco 0014 is specifically designed for medium head/medium flow applications in large residential and light commercial systems. Ideal for large BTUH boilers, primary/secondary loops, commercial water heaters, and light commercial heating and cooling systems. The Stainless Steel 0014 should be used on open loop systems. The unique replaceable cartridge contains all of the moving parts and allows for easy service instead of replacing the entire circulator. Universal flange to flange dimensions and orientation allows the 0014 to easily replace other models. The compact, direct-drive, low power consumption design makes it ideal for high-efficiency jobs.

Pump Dimensions & Weights

Model	Casing	A		B		C		D		F		G		Ship Wt.	
		in.	mm	in.	mm	in.	mm	in.	mm	in.	mm	in.	mm	lbs.	Kg
0014-F1	Cast Iron	7-1/4	184	5-13/16	148	3-1/4	83	3-5/16	84	5-3/8	137	6-1/2	165	12.0	5.5
0014-SF1	S. Steel	7-1/4	184	5-13/16	148	3-1/4	83	3-5/16	84	5-3/8	137	6-1/2	165	12.0	5.5



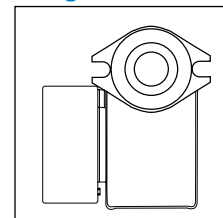
Mounting Positions



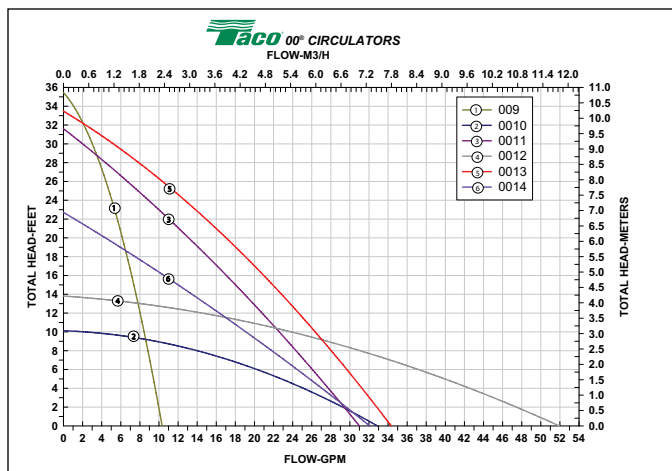
Electrical Data

Model	Volts	Hz	Ph	Amps	RPM	HP
0014-F1	115	60	1	1.45	3250	1/8
0014-SF1	115	60	1	1.45	3250	1/8
Motor Type	Permanent Split Capacitor Impedance Protected					
Motor Options	220/50/1, 220/60/1, 230/60/1, 100/110/50/60/1					

Flange Orientation



Performance Field - 60Hz



Taco
Do your best work.®