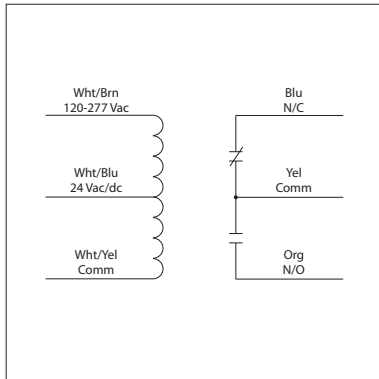


## RIB2421C

Enclosed Relay 10 Amp SPDT with 24 Vac/dc/120-277 Vac Coil



### Great Service Truck Relay

- One relay covers most applications

## 10 Amp Pilot Control Relays



**RIB2421C-RD**  
• Red housing

**RIB2421C-N4**  
• NEMA 4X housing,  
UL508 only



Meets  
"Buy American"  
of ARRA 2009

## Specifications

**# Relays & Contact Type:** One (1) SPDT Continuous Duty Coil  
**Expected Relay Life:** 10 million cycles minimum mechanical  
**Operating Temperature:** -30 to 140° F  
**Humidity Range:** 5 to 95% (noncondensing)  
**Operate Time:** 20ms  
**Relay Status:** LED On = Activated  
**Dimensions:** 1.70" x 2.80" x 1.50" with .50" NPT nipple  
**Wires:** 16", 600V Rated  
**Approvals:** UL Listed, UL916, UL864, C-UL  
 California State Fire Marshal, CE, RoHS  
**Housing Rating:** UL Accepted for Use in Plenum, NEMA 1  
**Gold Flash:** No  
**Override Switch:** No

**Contact Ratings:**  
 10 Amp General Use @ 277 Vac  
 10 Amp Resistive @ 30 Vdc (N/O)  
 7 Amp Resistive @ 30 Vdc (N/C)  
 1/2 HP @ 125 Vac  
 1 HP @ 250 Vac  
 1/4 HP @ 277 Vac  
 C300 Pilot Duty

**Coil Current:**  
 66 mA @ 24 Vac  
 38 mA @ 24 Vdc  
 40 mA @ 120-277 Vac

**Coil Voltage Input:**  
 24 Vac/dc ; 120-277 Vac ; 50-60 Hz  
 Drop Out = 3 Vac / 3.8 Vdc  
 Pull In = 20 Vac / 20 Vdc