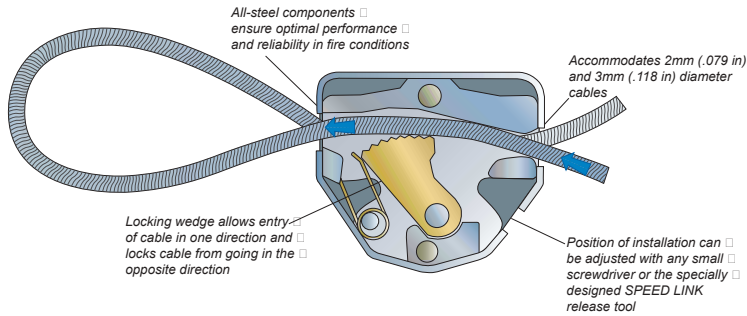


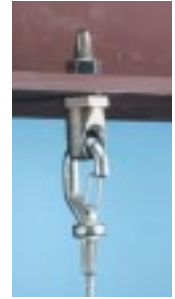
Internal View of One Side of Locking Device



Purlin with CADDY VF14 "C" purlin clip



Retrofit to existing beam clamp

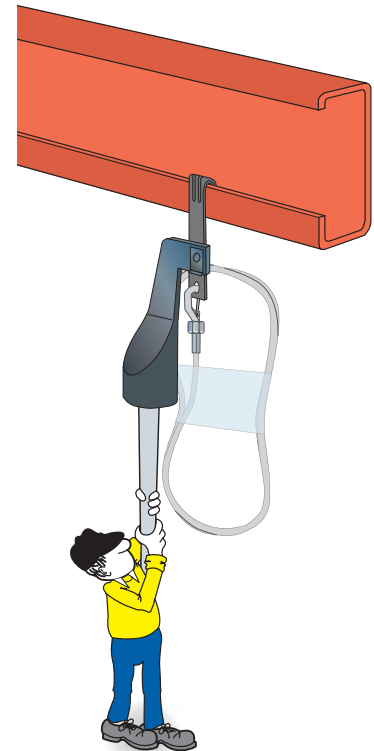


Beam with HangerMate[®] bolt

SPEED LINK System

PART NUMBER	CABLE DIMENSIONS DIAMETER	LENGTH	QTY. PER BOX	BAG QTY.	WT. BOX (LBS.)	LOAD* LIMITS (LBS.)
SLD2L1	2mm (.079 in)	1m (3.3 ft)	100	10	20.0	100
SL2L2	2mm (.079 in)	2m (6.6 ft)	100	10	23.3	100
SLD2L3	2mm (.079 in)	3m (9.9 ft)	100	10	26.6	100
SLD2L5	2mm (.079 in)	5m (16.4 ft)	50	10	16.5	100
SLD2L10	2mm (.079 in)	10m (32.8 ft)	25	5	12.3	100
SLD3L1	3mm (.118 in)	1m (3.3 ft)	100	10	24.2	200
SLD3L2	3mm (.118 in)	2m (6.6 ft)	100	10	31.7	200
SLD3L3	3mm (.118 in)	3m (9.9 ft)	50	10	19.6	200
SLD3L5	3mm (.118 in)	5m (16.4 ft)	50	10	27.1	200
SLD3L10	3mm (.118 in)	10m (32.8 ft)	25	5	22.9	200

*SPEED LINK is designed to a 5-to-1 safety factor.

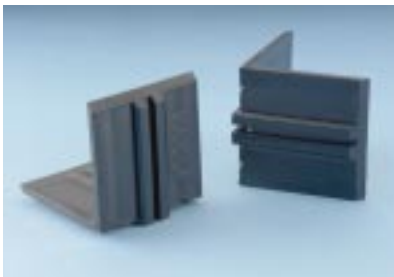


CADDY VAFT tool allows installation from the floor, wrap keeps wire out of the way.

SPEED LINK Tools and Accessories

PART NUMBER	DESCRIPTION	QTY. PER BOX	WT. BOX (LBS.)
SLWC	SPEED LINK WIRE CUTTER	1	0.7
SLADCP	AIR DUCT CORNER PROTECTOR	10	0.4

For other SPEED LINK tools and accessories, visit the ERICO website or contact us by phone.



Corner Protectors



Wire Cutter

HangerMate is a registered trademark of Textron Inc.
 Copyright ©2003 ERICO International Corporation. All rights reserved.
 CADDY, CADWELD, CRITEC, ERICO, ERITECH, ERIFLEX, and LENTON are registered trademarks of ERICO International Corporation.

Features

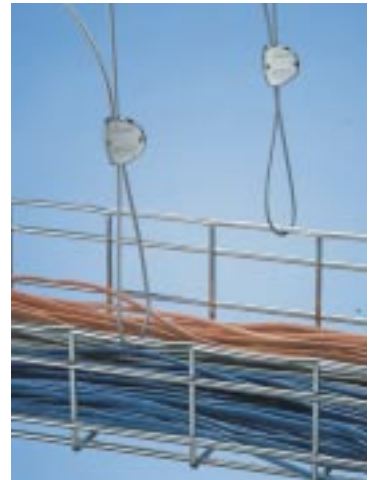
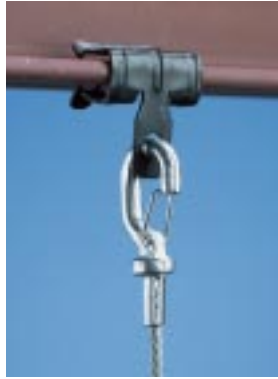
- Eliminates threaded rod and associated hardware
- Reduces installation time
- Quickly installs as a stand-alone hanging system without drilling into the building structure
- Works with a variety of CADDY® Fasteners
- Features galvanized steel construction for superior fire resistant performance
- Reduces inventory, storage space and shipping costs
- Increases installation versatility
- Minimizes vibration and system wear and tear
- Improves installation aesthetics

Patent Pending

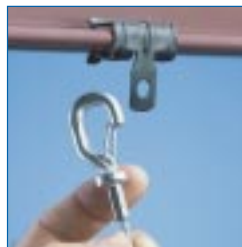


SPEED LINK

Universal Support System



Installation



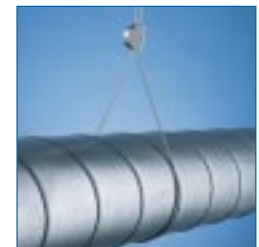
1. Hook works with a variety of CADDY Fasteners



OR Wrap around structure



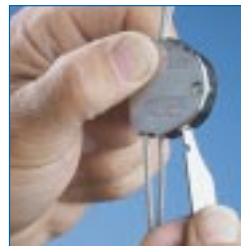
2. Thread locking device on to cable



3. Wrap cable around pipe or duct



4. Thread cable into other side of locking device – installation is done



5. To release, insert standard screwdriver or SPEED LINK release tool into opening and pull cable out