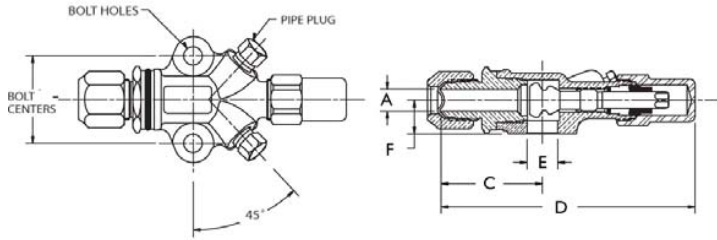
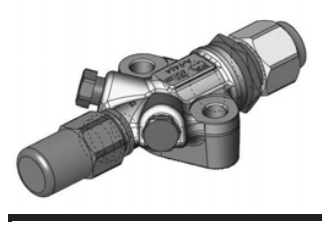


Brass Compressor Valves

Double Port, 45° Flare

Features:

- Maximum working pressure (PS): 700 psig, 48 bar
- Working temperature range (TS): -40°F/300°F, -40°C/149°C
- Compatible with all CFC, HCFC and HFC refrigerants and oils
- UL/cUL Recognized, CE Certified
- 100% tested
- Asbestos-free valve packing
- Valve openings designed for maximum flow and minimum pressure drop



References

- * Valve kit includes valve, gasket and bolts
- ** Replacement kit contains components to pack stem (pack gland, packing and pack washer)
- *** Cap and cap gasket kit
- **** Seal cap and o-ring kit
- ***** O-ring included

Dimensions

Valve Part Number	Valve Kit *	A (in)	C (in)	D (in)	E (in)	F (in)	Bolt Centers (in)	Bolt Hole Diameter (in)	Pipe Plug Size (in)	Flange Thickness (in)	Seat Position	Valve Wt (lb)	Kit Wt (lb)
A 16302	A 17518	3/8	1.73	4.45	0.56	0.62	1 5/8	.34	1/8	7/8	Mid	1.20	1.24
A 16303	A 17519	1/2	1.86	4.67	0.56	0.62	1 5/8	.34	1/8	7/8	Mid	1.17	1.17
A 16304	A 17520	5/8	1.99	4.80	0.56	0.62	1 5/8	.34	1/8	7/8	Mid	1.23	1.27

Metric Dimensions

Valve Part Number	Valve Kit *	A (mm)	C (mm)	D (mm)	E (mm)	F (mm)	Bolt Centers (mm)	Bolt Hole Diameter (mm)	Pipe Plug Size (in)	Flange Thickness (mm)	Seat Position	Valve Wt (kg)	Kit Wt (kg)
A 16302	A 17518	10	44	113	14	10	41	9	1/8	22	Mid	0.54	0.56
A 16303	A 17519	13	47	119	14	13	41	9	1/8	22	Mid	0.53	0.53
A 16304	A 17520	16	51	122	14	16	41	9	1/8	22	Mid	0.56	0.58

Torque To Seal

Front Seat		Back Seat		Pack Gland		Pipe Plug	Plastic Cap	Brass Cap		Steel Cap		Cast Iron Cap
ft-lb	N-m	ft-lb	N-m	ft-lb	N-m			ft-lb	N-m	ft-lb	N-m	
14 - 18	19 - 24	14 - 18	19 - 24	8 - 12	11 - 16	2 - 3 Threads Exposed	NA	20 - 30	27 - 41	3 - 5	4 - 7	NA

References

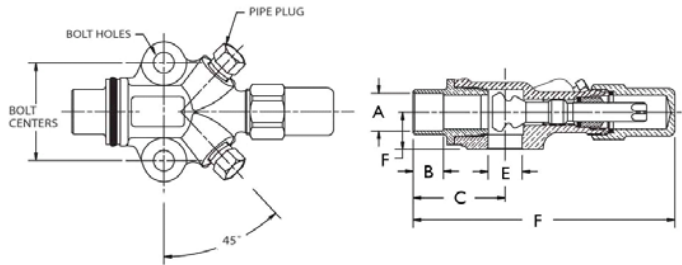
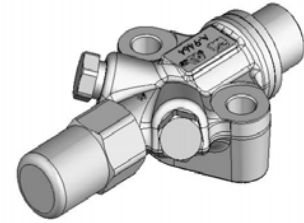
Valve Part Number	Body	Standard Seal Cap				Replacement Seal Cap				Replacement Kit**	Valve Kit *	Manufacturer Reference	
		Material	Seal Cap	Gasket	O-ring Kit	Plastic	Brass***	Steel	Cast Iron			Carrier	Copeland
A 16302	A 09464	Steel	A 04566			P 34627	A 04597	A 04566		A 17420	A 17518		998-0510-15
A 16303	A 09464	Steel	A 04566			P 34627	A 04597	A 04566		A 17420	A 17519		998-0510-16
A 16304	A 09464	Steel	A 04566			P 34627	A 04597	A 04566		A 17420	A 17520		998-0510-17

Brass Compressor Valves

Double Port, Solder

Features:

- Maximum working pressure (PS): 700 psig, 48 bar
- Working temperature range (TS): -40°F/300°F, -40°C/149°C
- Compatible with all CFC, HCFC and HFC refrigerants and oils
- UL/cUL Recognized, CE Certified
- 100% tested
- Asbestos-free valve packing
- Valve openings designed for maximum flow and minimum pressure drop



References

- * Valve kit includes valve, gasket and bolts
- ** Replacement kit contains components to pack stem (pack gland, packing and pack washer)
- *** Cap and cap gasket kit
- **** Seal cap and o-ring kit
- ***** O-ring included

Dimensions

Valve Part Number	Valve Kit *	A (in)	B (in)	C (in)	D (in)	E (in)	F (in)	Bolt Centers (in)	Bolt Hole Diameter (in)	Pipe Plug Size (in)	Flange Thickness (in)	Seat Position	Valve Wt (lb)	Kit Wt (lb)
A 16307	A 17510	3/8	0.31	1.27	4.07	0.56	0.62	1 5/8	.34	1/8	7/8	Front	0.69	0.73
A 16308	A 17511	1/2	0.38	1.40	4.20	0.56	0.62	1 5/8	.34	1/8	7/8	Front	0.86	0.90
A 16309	A 17512	5/8	0.50	1.52	4.32	0.56	0.62	1 5/8	.34	1/8	7/8	Front	0.88	0.92
A 16309	A 17531	5/8	0.50	1.52	4.32	0.56	0.62	1 5/8	.34	1/8	7/8	I Turn off Back	0.88	0.93

Metric Dimensions

Valve Part Number	Valve Kit *	A (mm)	B (mm)	C (mm)	D (mm)	E (mm)	F (mm)	Bolt Centers (mm)	Bolt Hole Diameter (mm)	Pipe Plug Size (in)	Flange Thickness (mm)	Seat Position	Valve Wt (kg)	Kit Wt (kg)
A 16307	A 17510	10	8	32	103	14	10	41	9	1/8	22	Front	0.31	0.33
A 16308	A 17511	13	10	36	107	14	13	41	9	1/8	22	Front	0.39	0.41
A 16309	A 17512	16	13	39	110	14	16	41	9	1/8	22	Front	0.40	0.42
A 16309	A 17531	16	13	39	110	14	16	41	9	1/8	22	I Turn off Back	0.40	0.42

Torque To Seal

Front Seat		Back Seat		Pack Gland		Pipe Plug	Plastic Cap	Brass Cap		Steel Cap		Cast Iron Cap
ft-lb	N-m	ft-lb	N-m	ft-lb	N-m			ft-lb	N-m	ft-lb	N-m	
14 - 18	19 - 24	14 - 18	19 - 24	8 - 12	11 - 16	2 - 3 Threads Exposed	NA	20 - 30	27 - 41	3 - 5	4 - 7	NA

References

Valve Part Number	Body	Standard Seal Cap				Replacement Seal Cap				Replacement Kit**	Valve Kit *	Manufacturer Reference	
		Material	Seal Cap	Gasket	O-ring Kit	Plastic	Brass***	Steel	Cast Iron			Carrier	Copeland
A 16307	A 09464	Steel	A 04566			P 34627	A 04597	A 04566		A 17420	A 17510	998-0510-04	
A 16308	A 09464	Steel	A 04566			P 34627	A 04597	A 04566		A 17420	A 17511	998-0510-05	
A 16309	A 09464	Steel	A 04566			P 34627	A 04597	A 04566		A 17420	A 17512	998-0510-06	
A 16309	A 09464	Steel	A 04566			P 34627	A 04597	A 04566		A 17420	A 17531	06DA660-060	



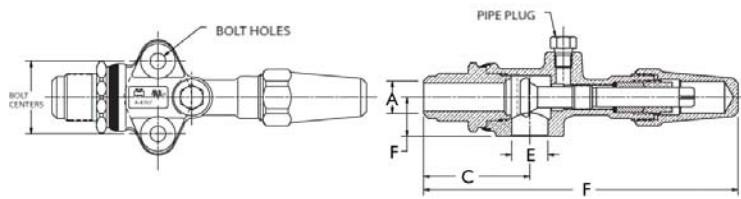
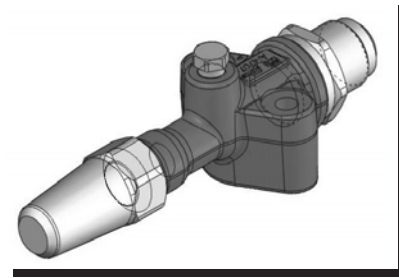
Customer Service 800.846.9750 • www.muellerindustries.com
8285 Tournament Drive, Suite 150, Memphis, TN 38125

Brass Compressor Valves

Straight Port, 45° Flare

Features:

- Maximum working pressure (PS): 700 psig, 48 bar
- Working temperature range (TS): -40°F/300°F, -40°C/149°C
- Compatible with all CFC, HCFC and HFC refrigerants and oils
- UL/cUL Recognized, CE Certified
- 100% tested
- Asbestos-free valve packing
- Valve openings designed for maximum flow and minimum pressure drop



References

- * Valve kit includes valve, gasket and bolts
- ** Replacement kit contains components to pack stem (pack gland, packing and pack washer)
- *** Cap and cap gasket kit
- **** Seal cap and o-ring kit
- ***** O-ring included

Dimensions

Valve Part Number	Valve Kit *	A (in)	C (in)	D (in)	E (in)	F (in)	Bolt Centers (in)	Bolt Hole Diameter (in)	Pipe Plug Size (in)	Flange Thickness (in)	Seat Position	Valve Wt (lb)	Kit Wt (lb)
A 13166		3/4	2.37	7.05	0.81	0.85	1 5/8	.34	1/8	1 1/4	Mid	1.78	

Metric Dimensions

Valve Part Number	Valve Kit *	A (mm)	C (mm)	D (mm)	E (mm)	F (mm)	Bolt Centers (mm)	Bolt Hole Diameter (mm)	Pipe Plug Size (in)	Flange Thickness (mm)	Seat Position	Valve Wt (kg)	Kit Wt (kg)
A 13166		19	60	179	21	19	41	9	1/8	32	Mid	0.81	

Torque To Seal

Front Seat		Back Seat		Pack Gland		Pipe Plug	Plastic Cap	Brass Cap		Steel Cap		Cast Iron Cap
ft-lb	N-m	ft-lb	N-m	ft-lb	N-m			ft-lb	N-m	ft-lb	N-m	
22 - 40	30 - 54	25 - 45	34 - 61	15 - 25	20 - 34	2 - 3 Threads Exposed	Hand Tight	40 - 50	54 - 68	NA	NA	NA

References

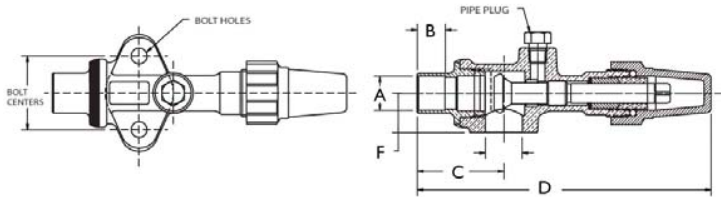
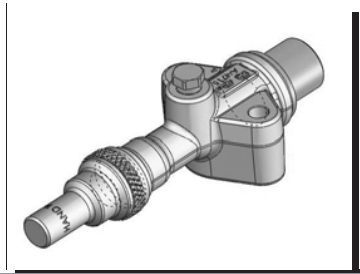
Valve Part Number	Body	Standard Seal Cap				Replacement Seal Cap				Replacement Kit**	Valve Kit*	Manufacturer Reference	
		Material	Seal Cap	Gasket	Kit*****	Plastic	Brass*****	Steel	Cast Iron			Carrier	Copeland
A 13166	A 04707	Brass	A 04775	A 04710	A 15099		A 15099			A 17419			

Brass Compressor Valves

Straight Port, Solder

Features:

- Maximum working pressure (PS): 700 psig, 48 bar
- Working temperature range (TS): -40°F/300°F, -40°C/149°C
- Compatible with all CFC, HCFC and HFC refrigerants and oils
- UL/cUL Recognized, CE Certified
- 100% tested
- Asbestos-free valve packing
- Valve openings designed for maximum flow and minimum pressure drop



References

- * Valve kit includes valve, gasket and bolts
- ** Replacement kit contains components to pack stem (pack gland, packing and pack washer)
- *** Cap and cap gasket kit
- **** Seal cap and o-ring kit
- ***** O-ring included

Dimensions

Valve Part Number	Valve Kit *	A (in)	B (in)	C (in)	D (in)	E (in)	F (in)	Bolt Centers (in)	Bolt Hole Diameter (in)	Pipe Plug Size (in)	Flange Thickness (in)	Seat Position	Valve Wt (lb)	Kit Wt (lb)
A 16310		3/4	0.62	1.91	6.49	0.81	0.88	1 5/8	.34	1/8	1 21/64	Front	1.64	
A 16311	A 17515	7/8	0.76	1.97	6.55	0.81	0.88	1 5/8	.34	1/8	1 21/64	Front	1.63	1.55
B 32197	A 17529	7/8	0.76	1.97	6.47	0.81	0.88	1 3/4	.34	1/8	1 21/64	Mid	1.42	1.69
A 15500		1 1/8	0.9	2.06	6.64	0.81	0.88	1 5/8	.34	1/8	1 21/64	Back	1.43	
A 16312	A 17516	1 1/8	0.9	2.06	6.64	0.81	0.88	1 5/8	.34	1/8	1 21/64	Front	1.66	1.55

Metric Dimensions

Valve Part Number	Valve Kit *	A (mm)	B (mm)	C (mm)	D (mm)	E (mm)	F (mm)	Bolt Centers (mm)	Bolt Hole Diameter (mm)	Pipe Plug Size (in)	Flange Thickness (mm)	Seat Position	Valve Wt (kg)	Kit Wt (kg)
A 16310		19	16	49	165	21	22	41	9	1/8	34	Front	0.74	
A 16311	A 17515	22	19	50	166	21	22	41	9	1/8	34	Front	0.74	0.70
B 32197	A 17529	22	19	50	164	21	22	44	9	1/8	34	Mid	0.64	0.77
A 15500		29	23	52	169	21	22	41	9	1/8	34	Back	0.65	
A 16312	A 17516	29	23	52	169	21	22	41	9	1/8	34	Front	0.75	0.70

Torque To Seal

Front Seat		Back Seat		Pack Gland		Pipe Plug	Plastic Cap	Brass Cap		Steel Cap		Cast Iron Cap
ft-lb	N-m	ft-lb	N-m	ft-lb	N-m			ft-lb	N-m	ft-lb	N-m	
22 - 40	30 - 54	25 - 45	34 - 61	15 - 25	20 - 34	2 - 3 Threads Exposed	Hand Tight	40 - 50	54 - 68	NA	NA	NA

References

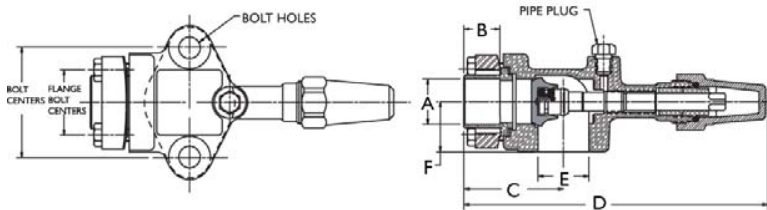
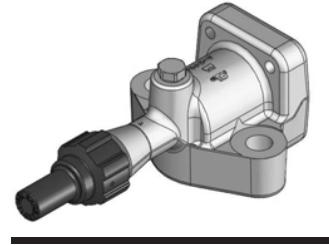
Valve Part Number	Body	Standard Seal Cap			Replacement Seal Cap				Replacement Kit**	Valve Kit *	Manufacturer Reference	
		Material	Seal Cap*****	Kit	Plastic*****	Brass*****	Steel	Cast Iron			Carrier	Copeland
A 16310	A 04707	Plastic	P 34632	P 35915	P 34632	A 15099			A 17419			
A 16311	A 04707	Plastic	P 34632	P 35915	P 34632	A 15099			A 17419	A 17515		98-0510-12
B 32197	A 04715	Plastic	P 34632	P 35915	P 34632	A 15099			A 17419	A 17529	06DA660-062	
A 15500	A 04707	Plastic	P 34632	P 35915	P 34632	A 15099			A 17419			
A 16312	A 04707	Plastic	P 34632	P 35915	P 34632	A 15099			A 17419	A 17516		998-0510-13

Brass Compressor Valves

Flange Union, Solder

Features:

- Maximum working pressure (PS): 700 psig, 48 bar
- Working temperature range (TS): -40°F/300°F, -40°C/149°C
- Compatible with all CFC, HCFC and HFC refrigerants and oils
- UL/cUL Recognized, CE Certified
- 100% tested
- Asbestos-free valve packing
- Valve openings designed for maximum flow and minimum pressure drop



References

- * Valve kit includes valve, gasket and bolts
- ** Replacement kit contains components to pack stem (pack gland, packing and pack washer)
- *** Cap and cap gasket kit
- **** Seal cap and o-ring kit
- ***** O-ring included

Dimensions

Valve Part Number	Valve Kit *	A (in)	B (in)	C (in)	D (in)	E (in)	F (in)	Bolt Centers (in)	Bolt Hole Diameter (in)	Pipe Plug Size (in)	Flange Bolt Centers	Flange Thickness (in)	Seat Position	Valve Wt (lb)	Kit Wt (lb)
A 16313		3/4	0.62	2.31	7.33	1.25	1.25	2 3/4	.531	1/8	1.62	1	Front	3.93	
A 16314	A 17527	7/8	0.75	2.31	7.33	1.25	1.25	2 3/4	.531	1/8	1.62	1	Front	3.90	4.05
A 16315	A 17525	1 1/8	0.91	2.47	7.49	1.25	1.25	2 3/4	.531	1/8	1.62	1	Front	3.88	4.03
A 16316	A 17526	1 3/8	0.97	2.47	7.49	1.25	1.25	2 3/4	.531	1/8	1.62	1	Front	3.65	3.80

Metric Dimensions

Valve Part Number	Valve Kit *	A (mm)	B (mm)	C (mm)	D (mm)	E (mm)	F (mm)	Bolt Centers (mm)	Bolt Hole Diameter (mm)	Pipe Plug Size (in)	Flange Bolt Centers	Flange Thickness (mm)	Seat Position	Valve Wt (kg)	Kit Wt (kg)
A 16313		19	16	59	186	32	32	70	13	1/8	41	25	Front	1.78	
A 16314	A 17527	22	19	59	186	32	32	70	13	1/8	41	25	Front	1.77	1.84
A 16315	A 17525	29	23	63	190	32	32	70	13	1/8	41	25	Front	1.76	1.83
A 16316	A 17526	35	25	63	190	32	32	70	13	1/8	41	25	Front	1.66	1.72

Torque To Seal

Front Seat		Back Seat		Pack Gland		Pipe Plug	Plastic Cap	Brass Cap		Steel Cap	Cast Iron Cap
ft-lb	N-m	ft-lb	N-m	ft-lb	N-m			ft-lb	N-m	ft-lb	N-m
30 - 40	41 - 54	22 - 45	30 - 61	15 - 25	20 - 34	2 - 3 Threads Exposed	Hand Tight	40 - 50	54 - 68	NA	NA

References

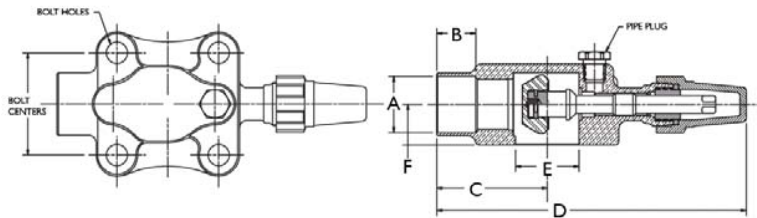
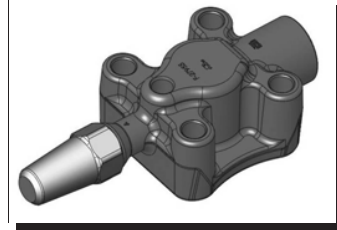
Valve Part Number	Body	Standard Seal Cap			Replacement Seal Cap			Replace-ment Kit**	Valve Kit *	Manufacturer Reference	
		Material	Seal Cap****	Kit	Plastic*****	Brass*****	Steel			Cast Iron	Carrier
A 16313	A 03416	Plastic	P 34632	P 35915	P 34632	A 15099		A 17419			
A 16314	A 03416	Plastic	P 34632	P 35915	P 34632	A 15099		A 17419	A 17527		998-0510-10
A 16315	A 03416	Plastic	P 34632	P 35915	P 34632	A 15099		A 17419	A 17525		998-0510-09
A 16316	A 03416	Plastic	P 34632	P 35915	P 34632	A 15099		A 17419	A 17526		998-0510-11

Brass Compressor Valves

Four-Bolt Mounting, Solder

Features:

- Maximum working pressure (PS): 700 psig, 48 bar
- Working temperature range (TS): -40°F/300°F, -40°C/149°C
- Compatible with all CFC, HCFC and HFC refrigerants and oils
- UL/cUL Recognized, CE Certified
- 100% tested
- Asbestos-free valve packing
- Valve openings designed for maximum flow and minimum pressure drop
- Flat Gasket Surface



References

- * Valve kit includes valve, gasket and bolts
- ** Replacement kit contains components to pack stem (pack gland, packing and pack washer)
- *** Cap and cap gasket kit
- **** Seal cap and o-ring kit
- ***** O-ring included

Dimensions

Valve Part Number	Valve Kit *	A (in)	B (in)	C (in)	D (in)	E (in)	F (in)	Bolt Centers (in)	Bolt Hole Diameter (in)	Pipe Plug Size (in)	Seat Position	Valve Wt (lb)	Kit Wt (lb)
B 32807	A 17532	1 1/8	0.9	2.72	7.61	1.56	1	2.5	.53	1/4	Mid	4.00	ACTIVE
B 32808	A 17533	1 3/8	0.96	2.72	7.61	1.56	1	2.5	.53	1/4	Mid	3.98	ACTIVE
B 32930	A 17534	1 5/8	1.1	2.88	7.89	1.81	1.03	2.5	.53	1/4	Mid	4.13	ACTIVE

Metric Dimensions

Valve Part Number	Valve Kit *	A (mm)	B (mm)	C (mm)	D (mm)	E (mm)	F (mm)	Bolt Centers (mm)	Bolt Hole Diameter (mm)	Pipe Plug Size (in)	Seat Position	Valve Wt (kg)	Kit Wt (kg)
B 32807	A 17532	29	23	69	193	40	25	64	13	1/4	Mid	1.81	2.03
B 32808	A 17533	35	24	69	193	40	25	64	13	1/4	Mid	1.80	2.12
B 32930	A 17534	41	28	73	200	46	26	64	13	1/4	Mid	1.87	2.12

Torque To Seal

Front Seat		Back Seat		Pack Gland		Pipe Plug	Plastic Cap	Brass Cap		Steel Cap		Cast Iron Cap
ft-lb	N-m	ft-lb	N-m	ft-lb	N-m			ft-lb	N-m	ft-lb	N-m	
22 - 40	30 - 54	25 - 45	34 - 61	10 - 15	14 - 20	2 - 3 Threads Exposed	Hand Tight	40 - 50	54 - 68	NA	NA	NA

References

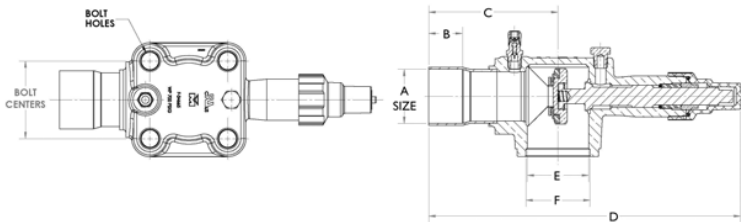
Valve Part Number	Body	Standard Seal Cap			Replacement Seal Cap				Replacement Kit**	Valve Kit *	Manufacturer Reference	
		Material	Seal Cap****	Kit*****	Plastic*****	Brass*****	Steel	Cast Iron			Carrier	Copeland
B 32807	F 27950	Plastic	P 34632	P 35915	P 34632	A 15099			A 17418	A 17532	06DA660-063	
B 32808	F 27955	Plastic	P 34632	P 35915	P 34632	A 15099			A 17418	A 17533	06DA660-065	
B 32930	F 29201	Plastic	P 34632	P 35915	P 34632	A 15099			A 17418	A 17534	06DA660-090	

Brass Compressor Valves

Four-Bolt Mounting, Access Port

Features:

- Maximum working pressure (PS): 700 psig, 48 bar
- Working temperature range (TS): -40°F/300°F, -40°C/149°C
- Compatible with all CFC, HCFC and HFC refrigerants and oils
- UL/cUL Recognized, CE Certified
- 100% tested
- Asbestos-free valve packing
- Valve openings designed for maximum flow and minimum pressure drop



References

- **** Seal cap and o-ring kit
- ***** O-ring included

Dimensions

Valve Part Number	A (in)	B (in)	C (in)	D (in)	E (in)	F (in)	Access Port (in)	Bolt Centers (in)	Bolt Hole Diameter (in)	Pipe Plug Size (in)	Seat Position	Valve Wt (lb)
A 17495	2 1/8	1.34	5.09	12.31	2.42	2.53	0.25	3.06	.69	1/4	Mid	11.84

Metric Dimensions

Valve Part Number	A (mm)	B (mm)	C (mm)	D (mm)	E (mm)	F (mm)	Access Port (in)	Bolt Centers (mm)	Bolt Hole Diameter (in)	Pipe Plug Size (in)	Seat Position	Valve Wt (kg)
A 17495	54	34.036	129.286	312.674	61.468	54	0.25	78	17	1/4	Mid	5.37

Torque To Seal

Front Seat		Back Seat		Pack Gland		Pipe Plug	Plastic Cap
ft-lb	N-m	ft-lb	N-m	ft-lb	N-m		
45 - 65	61 - 88	45 - 65	61 - 88	35 - 45		240 - 300	Hand Tight

References

Valve Part Number	Body	Standard Seal Cap			Replacement Seal Cap		
		Material	Seal Cap****	Kit****	Plastic*****	Brass****	Cast Iron
A 17495	F 34665	Plastic	N 02849	A 17668	A 17668	A 15099	B 33816