

JOB:	REPRESENTATIVE:	
UNIT TAG:	ORDER NO.:	DATE:
ENGINEER:	SUBMITTED BY:	DATE:
CONTRACTOR:	APPROVED BY:	DATE:



ASME Compression Tanks

Air Control

DESCRIPTION

The Compression Tank absorbs the expansion forces of the system water and provides proper pressurization under varying operating conditions. Used with Airtrol Fittings it provides positive air control.

CONSTRUCTION

These tanks are constructed of carbon steel in accordance with Section VIII, Division I of the ASME Boiler and Pressure Vessel Code - and so stamped.

PERFORMANCE LIMITATIONS

Maximum Design Pressure:
 Model 15 – 100: 150 psig (1034 kPa)
 Model 120 – 505: 125 psig (862 kPa)
 Maximum Design Temperature:
 650°F (343°C)

SCHEDULE

PART NUMBER	MODEL NO.	CAPACITY GAL (L)	REQUIRED AIRTROL TANK FITTING	TAGGING INFORMATION	QUANTITY
116029	15	15 (57)	ATF-12		
116030	24	24 (91)	ATF-12		
116031	30	30 (114)	ATF-12		
116032	40	40 (151)	ATF-12		
116033	60	60 (227)	ATF-16		
116034	80	80 (303)	ATF-20		
116035	100	100 (379)	ATF-20 or ATFL		
116036	120	120 (454)	ATF-24 or ATFL		
116037	135	135 (511)	ATF-24 or ATFL		
116038	175	175 (662)	ATFL		
116039	220	220 (833)	ATFL		
116040	240	240 (908)	ATFL		
116041	305	305 (1154)	ATFL		
116042	400	400 (1514)	ATFL		
116840	505	505 (1912)	ATFL		

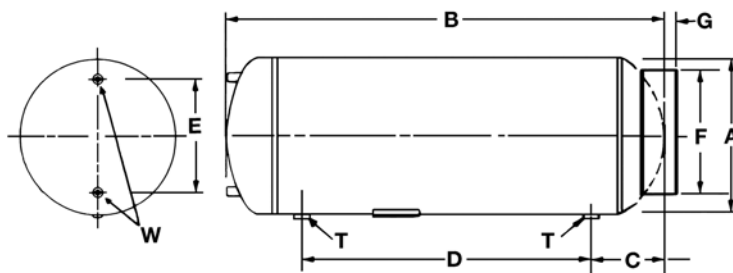
TYPICAL SPECIFICATION

Furnish and install as shown on plans a _____ gallon (_____ liter), _____" diameter x _____" long horizontal compression tank with two 1/2" NPT gauge glass tapings in one head and a minimum of two _____" NPT tapings (Select one: 15 thru 135 gallon [57 thru 511 liter] tanks @ 1" or 175 thru 505 gallon [662 thru 1912 liter] tanks @ 1-1/2") in the shell. The tank must be designed, constructed and stamped for _____ psig @ 650° F (343 °C) in accordance with Section VIII, Division I of the ASME Boiler and Pressure Vessel Code, and registered with The National Board of Boiler and Pressure Vessel Inspectors.

The Compression tank(s) shall be painted with one shop coat of air dry enamel.

A Manufacturers' Data Report for Pressure Vessels, Form U-1 as required by the provisions of the ASME Boiler and Pressure Vessel Code shall be furnished for each compression tank upon request.

Each tank shall be Xylem – Bell & Gossett Model No. _____



DIMENSIONS AND WEIGHTS

MODEL NUMBER	DIMENSIONS - INCHES (MM)							TAPPINGS NPT INCHES (mm)	
	A	B	C	D	E	F	G	T	W
15	12 (305)	33 (838)	7 (178)	19 (483)	8 (203)	11-1/2 (292)	1-1/8 (29)	1	1/2
24	12 (305)	51 (1295)	7 (178)	37 (940)	8 (203)	11-1/2 (292)	1-1/8 (29)	1	1/2
30	14 (356)	48 (1219)	8-3/8 (213)	31-1/4 (794)	10 (254)	12 (305)	1-3/8 (35)	1	1/2
40	14 (356)	63 (1600)	8-3/8 (213)	46-1/4 (1175)	10 (254)	12 (305)	1-3/8 (35)	1	1/2
60	16 (406)	72 (1829)	9-1/4 (235)	53-1/2 (1359)	12 (305)	14 (356)	1 (25)	1	1/2
80	20 (508)	62 (1575)	10 (254)	42 (1067)	16 (406)	18 (457)	2-5/16 (59)	1	1/2
100	20 (508)	78 (1981)	10 (254)	58 (1473)	16 (406)	18 (457)	2-5/16 (59)	1	1/2
120	24 (610)	65 (1651)	11-1/8 (283)	42-3/4 (1086)	20 (508)	22 (559)	1-1/2 (38)	1	1/2
135	24 (610)	72 (1829)	11-1/8 (283)	49-3/4 (1264)	20 (508)	22 (559)	1-1/2 (38)	1	1/2
175	30 (762)	62-1/4 (1581)	13-1/2 (343)	35-1/4 (895)	22 (559)	26 (660)	1-3/8 (35)	1-1/2	1/2
220	30 (762)	77 (1956)	13-1/2 (343)	50 (1270)	22 (559)	26 (660)	1-3/8 (35)	1-1/2	1/2
240	30 (762)	84 (2134)	13-1/2 (343)	57 (1448)	22 (559)	26 (660)	1-3/8 (35)	1-1/2	1/2
305	30 (762)	105-3/4 (2686)	13-1/2 (343)	78-3/4 (2000)	22 (559)	26 (660)	1-3/8 (35)	1-1/2	1/2
400	36 (914)	93 (2362)	14-3/4 (375)	63-1/2 (1613)	28 (711)	30 (762)	1 (25)	1-1/2	1/2
505	36 (914)	116 (2946)	14-3/4 (375)	86-1/2 (2197)	28 (711)	30 (762)	1-1/8 (29)	1-1/2	1/2

Dimensions are subject to change. Not to be used for construction purposes unless certified.

SIZE	Approximate Shipping Weight LBS. (KG)	Approximate Weight 100% Full LBS. (KG)
15	50 (23)	172 (78)
24	72 (33)	265 (120)
30	80 (36)	318 (144)
40	104 (47)	419 (190)
60	134 (61)	616 (280)
80	160 (73)	802 (364)
100	186 (84)	1001 (454)
120	217 (98)	1201 (545)
135	230 (104)	1346 (611)
175	320 (145)	1765 (801)
220	370 (168)	2201 (999)
240	420 (191)	2398 (1088)
305	482 (219)	3035 (1377)
400	656 (298)	3986 (1808)
505	745 (338)	4950 (2245)

Xylem Inc.
8200 N. Austin Avenue
Morton Grove, IL 60053
Phone: (847)966-3700
Fax: (847)965-8379
www.xylem.com/brands/bellgossett

