



Special Application Gauges

Series PT-1088 Combination Pressure and Temperature Gauges

DESCRIPTION

U.S. Gauge Series PT-1088 boiler gauges are designed for low cost, reliable pressure and temperature measurement in a wide range of applications.

These utility gauges are specially constructed to withstand conditions normally encountered in domestic hot water heating systems.

The 2-1/2" gauge size is ideal for installations where mounting space is limited and the larger 3-1/2" size is also available. Ranges are 0 to 50 through 0 to 200 psi pressure, with temperature ranges from 60°F to 320°F; temperature accuracy is rated to ±3% of span. Series PT-1088 gauges are constructed with a brass socket connection and movement.



SPECIFICATIONS

DIAL SIZE: 2-1/2", 3-1/2"

CASE: 3-1/2": Drawn steel, grey corrosion-resistant paint
2-1/2": Black paint

RING/WINDOW: 3-1/2": One-piece threaded polycarbonate
2-1/2": Polycarbonate window with chrome plated steel ring

DIAL: Steel, white background with black markings

CONNECTIONS: 3-1/2": 1/2-14 ANPT LM or LBM
2-1/2": 1/4-18 NPT CBM

TEMPERATURE ELEMENT: Helical bimetallic element enclosed in a brass bulb

SOCKET: Brass

RANGE: 60°F to 260°F (20°C to 120°C).

ACCURACY:

Pressure: ±3-2-3% of span (Grade B)

Temperature: ±3% of span

SIZE AND RANGES:

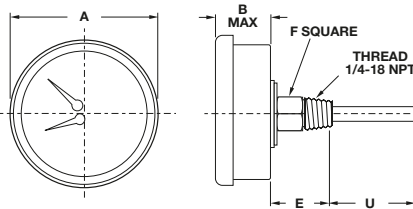
1/2-14 LM: 3-1/2", 50 psi (350 kPa) and 60°F to 260°F (20°C to 120°C)

1/2-14 LBM: 3-1/2", 50 psi (350 kPa) and 60°F to 260°F (20°C to 120°C)

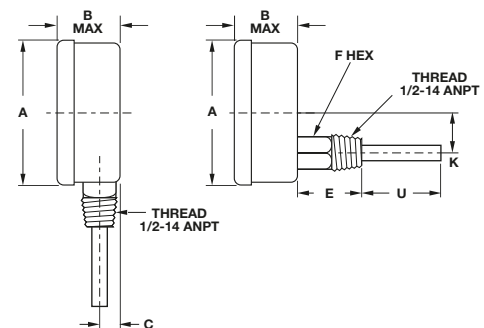
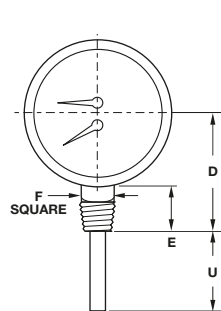
1/4-18 CBM: 2-1/2", 75 psi (500 kPa) and 60°F to 320°F (20°C to 160°C)

1/2-14 LM: 3-1/2", 200 psi (1400 kPa) and 80°F to 320°F (30°C to 160°C)

1/2-14 LBM: 3-1/2", 200 psi (1400 kPa) and 80°F to 320°F (30°C to 160°C)



INCHES
(MM)



MODEL	UNIT	DIAL SIZE	ØA	B	C	D	E	F	K	U
PT-1088	inches	3-1/2" LM	3.74	1.57	.54	2.95	1.08	.88	-	2.00
	mm		95.0	39.88	13.72	74.93	27.43	22.35	-	50.8
PT-1088	inches	3-1/2" LBM	3.74	1.24	-	-	1.64	.88	.95	2.00
	mm		95.0	31.50	-	-	41.66	22.35	24.13	50.8
PT-1088	inches	2-1/2" CBM short shank	2.84	1.20	-	-	.87	.62	-	1.61
	mm		72.0	30.5	-	-	22.10	15.9	-	40.9
PT-1088	inches	2-1/2" CBM long shank	2.84	1.20	-	-	2.01	.62	-	1.61
	mm		72.0	30.5	-	-	51.05	15.9	-	40.9

© 2002, by AMETEK, Inc. All rights reserved. 15M1102A (160126) Specifications are subject to change without notice. Visit our Web sites for the most up-to-date information.



For Gauges/Thermometers:

U.S. GAUGE
820 Pennsylvania Blvd.
Feasterville, PA 19053 U.S.A.
Tel: (215) 355-6900
Fax: (215) 354-1802
www.ametekusg.com

Customer Service Tel: (863) 534-1504
Customer Service Fax: (863) 533-7465

For Electronic Products:

PMT PRODUCTS
820 Pennsylvania Blvd.
Feasterville, PA 19053 U.S.A.
Tel: (215) 355-6900
Fax: (215) 354-1800
www.ametekusg.com

For Diaphragm Seals:

M&G PRODUCTS
8600 Somerset Drive
Largo, FL 33773 U.S.A.
Tel: (727) 536-7831
Fax: (727) 539-6882
www.ametek.com/tci





Special Application Gauges

Series PT-1088 Combination Pressure and Temperature Gauges

SPEC NUMBER SELECTION CHART

2-1/2" PT-1088 Round Case

Model Number	Range	Socket Shank Length	1/4-18 NPT CBM Spec No.
PT-1088K	75 psi / 60°F-320°F	.87"	199960
PT-1088K	75 psi / 60°F-320°F	2.01"	199961

3-1/2" PT-1088 Round Case

Model Number	Range	1/2-14 ANPT LM Spec No.	1/2-14 ANPT LBM Spec No.
PT-1088	50 psi / 350 kPa	144434	144435
	60°F-250°F / 20°C-120°C		
PT-1088	2000 psi / 1400 kPa	144826	144827
	80°F-320°F / 30°C-160°C		

© 2002, by AMETEK, Inc. All rights reserved. 15M1102A (160126) Specifications are subject to change without notice. Visit our Web sites for the most up-to-date information.



For Gauges/Thermometers:

U.S. GAUGE
820 Pennsylvania Blvd.
Feasterville, PA 19053 U.S.A.
Tel: (215) 355-6900
Fax: (215) 354-1802
www.ametekusg.com

Customer Service Tel: (863) 534-1504
Customer Service Fax: (863) 533-7465

For Electronic Products:

PMT PRODUCTS
820 Pennsylvania Blvd.
Feasterville, PA 19053 U.S.A.
Tel: (215) 355-6900
Fax: (215) 354-1800
www.ametekusg.com

For Diaphragm Seals:

M&G PRODUCTS
8600 Somerset Drive
Largo, FL 33773 U.S.A.
Tel: (727) 536-7831
Fax: (727) 539-6882
www.ametek.com/tci

