

AXC - IN-LINE DUCT FANS

Ideal air movers for residential, commercial and industrial applications.

The quiet and efficient backward curved impeller is capable of developing significant pressure and the in-line configuration simplifies installation.

The unique motor design, combined with high quality materials and workmanship, result in a truly versatile fan. Use Canarm LFI's AXC series fans to supplement your dryer's fan and enhance your dryer's performance. AXC fans have an exclusive combination of design features resulting in a powerful, quiet unity that is unmatched by other designs.

Better ventilation solutions include powerful AXC series fans for range hoods. These remote-mounted fans improve the efficiency of range hoods, while reducing noise. The exclusive combination of design features delivers a powerful, yet quiet, fan that is unmatched by other range hood exhaust systems.

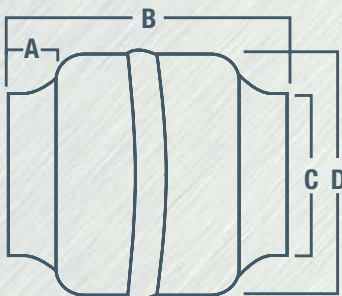
FEATURES

- Maintenance free and energy efficient external rotor motor.
- Handles high static pressure and up to 140° F.
- Backward curved impellers which greatly reduce operating noise levels.
- Completely speed controllable (See MC series controls on page 26).
- Heavy gauge drawn steel housing epoxy coated inside and out for superior corrosion protection.



MODEL	DESCRIPTION	VOTS	AMPS (FLA)	WATTS	RPM	dB(A) @ 1M	WEIGHT (LBS)	CFM @ STATIC PRESSURE										
								0" SP	1/8" SP	1/4" SP	3/8" SP	1/2" SP	3/4" SP	1" SP	1 1/4" SP	1 1/2" SP	2" SP	3" SP
AXC100A	4" IN-LINE DUCT FAN	120	0.57	55	1750	44	7	106	99	93	87	80	68	55	39	-	-	-
AXC100B	4" IN-LINE DUCT FAN	120	0.69	85	2400	54	7	152	146	139	131	124	106	82	66	33	-	-
AXC125A	5" IN-LINE DUCT FAN	120	0.58	62	1650	36	7	159	127	100	82	68	34	-	-	-	-	-
AXC125B	5" IN-LINE DUCT FAN	120	0.7	85	2350	53	7	212	185	162	145	128	79	32	-	-	-	-
AXC150A	6" IN-LINE DUCT FAN	120	0.75	80	2500	54	7	247	225	202	178	161	132	92	50	-	-	-
AXC150B	6" IN-LINE DUCT FAN	120	0.73	72	2580	55	11	309	271	237	202	171	132	107	88	15	-	-
AXC200A	8" IN-LINE DUCT FAN	120	0.72	72	2550	56	11	418	397	366	339	306	233	174	110	56	-	-
AXC200B	8" IN-LINE DUCT FAN	120	1.52	160	2700	60	11	636	618	557	521	494	412	353	271	190	78	-
AXC250	10" IN-LINE DUCT FAN	120	1.94	250	2650	63	11	695	659	610	541	500	359	279	197	125	41	-
AXC300A	12" IN-LINE DUCT FAN	120	2.07	190	2650	68	18	865	824	765	736	677	553	459	365	283	124	-
AXC300B	12" IN-LINE DUCT FAN	120	2.78	345	2765	74	20	1198	1165	1052	981	945	796	615	453	263	178	65
AXC355A	14" IN-LINE DUCT FAN	120	2.88	334	1360	57	26	1325	1220	1105	985	860	688	550	400	238	-	-
AXC355B	14" IN-LINE DUCT FAN	120	7.81	830	2900	77	31	1400	1375	1360	1335	1285	1220	1135	1075	1000	880	675

DIMENSIONS



MODEL	A	B	C	D
AXC100A	1"	6.5"	3.9"	9.5"
AXC100B	1"	6.5"	3.9"	9.5"
AXC125A	1"	6.5"	4.8"	9.5"
AXC125B	1"	6.5"	4.8"	9.5"
AXC150A	1"	6.5"	5.8"	9.5"
AXC150B	1"	11"	5.8"	13.2"
AXC200A	1"	11"	7.8"	13.5"
AXC200B	1"	11"	7.8"	13.2"
AXC250	1"	11"	9.8"	13.2"
AXC300A	1.2"	18"	12.4"	15.9"
AXC300B	1.2"	20"	12.4"	15.9"
AXC355A	1.5"	26"	14"	19"
AXC355B	1.5"	31"	14"	19"



ACCESSORIES

FAN SIZE	BACKDRAFT DAMPER	MOUNTING CLAMPS	EXHAUST & SUPPLY GRILLS
AXC100	BD100	MC100	GR100
AXC125	BD125	MC125	GR125
AXC150	BD150	MC150	GR150
AXC200	BD200	MC200	GR200
AXC250	BD250	MC250	-
AXC300	BD300	MC300	-
AXC355	BD355	MC355	-



BACKDRAFT DAMPERS



MOUNTING CLAMPS

EXHAUST & SUPPLY GRILL



AXC models are special non-stock items and cannot be returned or cancelled.